

# Proteus 2026-2030

Advancing business leadership on biodiversity



proteus



WCMC

# Why Proteus?

*Proteus convenes a cross-sector group of forward-thinking companies that are committed to advancing action on biodiversity*

We stand at a pivotal moment. The five years from 2026 to 2030 will be instrumental for accelerating societal action to halt and reverse biodiversity loss. Proteus is working to enhance evidence-based biodiversity action and secure a natural world that supports resilient businesses and economies.

Proteus convenes a cross-sector group of forward-thinking companies that are committed to advancing action on biodiversity.

Building on over two decades of success, the 2026-2030 phase of Proteus continues to leverage UNEP-WCMC's unique position at the science-policy-practice interface. Proteus advances science, knowledge and best practice for business leadership on biodiversity.

For businesses, Proteus provides unparalleled engagement with UNEP-WCMC's multidisciplinary biodiversity expertise and networks. Companies participating in Proteus benefit from UNEP-WCMC's unique partnership model of cross-sector convening, peer-learning, capacity building and solution-oriented research that catalyses progress on crucial business biodiversity challenges.

Proteus engages with the most influential business and nature initiatives and industry associations to strengthen their scientific underpinning and support them to develop robust nature approaches that advance action across sectors.

Proteus is focused on biodiversity, while recognizing the interconnections between biodiversity, climate, water and people. This ensures that business strategies and management approaches support coherent and efficient action across multiple environmental and social issues.

In this 2026-2030 strategic phase, Proteus is diversifying its reach across sectors. This allows Proteus to accelerate the solutions needed to address shared challenges and knowledge gaps. Proteus enables companies to adopt robust corporate processes to respond to nature-related issues across business operations, value chains and landscapes.

This document outlines the strategic roadmap for Proteus 2026-2030. UNEP-WCMC is excited to be implementing this vision alongside a growing cross-sector community of businesses committed to meaningful biodiversity action.

## Proteus in Numbers

**200,000**

Increase in WDPCA records since 2003

**2 Million**

Web views on the Biodiversity A-Z

**9500+**

IBAT reports generated by partners since 2018

**27**

Companies advised on biodiversity strategies

## Between 2021 and 2025:

**2400+**

Hours of technical assistance provided

**2000+**

Partner company employees trained

See our achievements to date in detail on Page 18

# Proteus Across Sectors

Proteus convenes businesses from across sectors and value chains that interface with biodiversity. These include mining, infrastructure, renewable energy and utilities, manufacturing, agriculture, food and beverage, forestry, automotive and pharmaceuticals, among others.



**Mining and  
Materials**



**Renewable  
Energy**



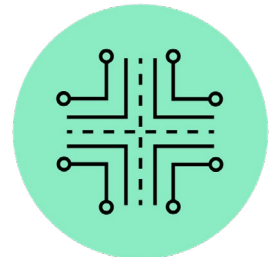
**Forestry and  
Agriculture**



**Manufacturing  
and Processing**



**Retail and  
Distribution**



**Infrastructure  
and Construction**



# Renewal of Proteus

**The five years from 2026-2030 are crucial for delivering the Sustainable Development Goals and Kunming-Montreal Global Biodiversity Framework.**

The business case for action on nature is clear. Companies are reliant on and impact biodiversity and the ecosystem services that nature provides.

In recent years, various nature-related accountability frameworks, disclosure requirements and compliance mechanisms have emerged. These are helping businesses to understand their relationship with nature as a basis for setting more scientifically rigorous goals and targets.

However, biodiversity continues to decline in the face of growing direct and indirect drivers of change. At the global level, the Kunming-Montreal Global Biodiversity Framework provides an ambitious roadmap for the whole-of-society action that is needed to halt and reverse biodiversity loss.

Businesses are critical to unlocking progress towards achieving societal goals. Acting to address nature-related dependencies, impacts, risks and opportunities meaningfully contributes towards global and national efforts to reduce threats to biodiversity, enable sustainable use, and increase positive outcomes for people and nature across landscapes.

**Proteus enables companies to embed the values of nature in their business decisions.**

Proteus has supported leading companies to address their relationship with biodiversity for over 20 years. Since 2003, we have enabled investment of over £18 million in biodiversity knowledge resources for the private sector and wider users. Through a unique model of cross-sector convening, capacity building and solution-oriented research, we target real-world business challenges and enable scaling of solutions.

Now is the time to build on this success. As we look ahead to 2030, the imperative for business action has never been stronger. More than ever, companies are

looking to increase their knowledge and capabilities on biodiversity. In doing so they can accelerate and scale solutions to manage business risk, build resilience, and meaningfully contribute to societal goals from local to global scales.

Through Proteus we leverage knowledge across sectors to pioneer the uptake of leading and interdisciplinary science in corporate biodiversity management. We enhance the capability of businesses to contribute towards biodiversity conservation globally.

**Proteus is being renewed for another five years.**

We are focused on biodiversity, while recognizing the interconnections between biodiversity, climate, water and people.

The IPBES Nexus Assessment highlights the need for synergistic and holistic actions that recognize the vital role of biodiversity in providing nature's contributions to people. In 2026, the IPBES Business and Biodiversity Assessment will further strengthen the knowledge needed to support business efforts to manage their interface with biodiversity. Through Proteus we are enabling businesses to act on the findings of these important assessments.

**Proteus supports the development of decision-ready information for Proteus partners to utilize in their own contexts.**

To be effective agents of change, companies need to embed nature considerations into decisions taken across the business and take decisive action in structuring their management practices and value chains.

While some companies are making progress towards embedding nature considerations, a significant gap exists between current business practices and the transformative action needed to deliver on global goals.

Through Proteus we are pioneering uptake of scientific corporate biodiversity management approaches towards addressing these challenges. We work with corporate and group-level functions to enable biodiversity action across operations, value chains, and landscapes.

**Vision: Business activities align with a world living in harmony with nature**

**Mission: To develop and share actionable biodiversity knowledge that enables businesses across all sectors to embed the values of nature within their decisions**

**Companies are equipped with the data, tools and knowledge to deliver on ambitious corporate nature strategies and targets that are informed by comprehensive nature-related assessments**

**Across operations and sites**

Deliver ambitious site-level biodiversity commitments that achieve positive outcomes

**Across value chains**

Engage with their full value chain to drive positive action that delivers benefits for biodiversity and people

**Across landscapes and seascapes**

Contribute to positive outcomes for biodiversity and people beyond operational boundaries



**Goal 1 – Advancing actionable knowledge and evidence for decision-making**



**Goal 2 – Enabling implementation in business practices**

**Facilitating comprehensive nature assessments**

Improvements to knowledge, including solution-oriented research, tools and data, to enable informed business decision-making on biodiversity across operations, value chains and landscapes.

**Building Capacity**

Development of internal business capacity through provision of technical support and training to help businesses make use of the tools, data and knowledge that Proteus provides.

**Embedding nature considerations across the business**

Materials to help companies communicate the business case for nature throughout their business, recognising that Every Job is a Nature Job.

**Providing intuitive business-focused tools**

Access to a top tier IBAT subscription and support in using business-focused tools within different business areas and decision-making contexts.

**Navigating global biodiversity policies and processes**

Support for companies to engage in global policy events and communication on key developments of relevance to business.

**Convening experts to share best practices**

Cultivation of pre-competitive collaboration across sectors and peer-to-peer learning to scale uptake of best practices and drive action.

# Proteus 2026-2030

## Vision

### **Business activities align with a world living in harmony with nature**

Achieving the global vision of a world living in harmony with nature, as laid out in the Kunming-Montreal Global Biodiversity Framework, will require transformative and systemic change across all sectors. Proteus is contributing to this future by working with committed businesses to put nature at the heart of decision-making. The outcomes and impact of investment in Proteus are increased by making knowledge available to industry initiatives, governments, the academic community, and civil society.

## Mission

### **To develop and share actionable biodiversity knowledge that enables businesses across all sectors to embed the values of nature within their decisions**

Our mission recognizes the importance of convening businesses from all sectors to enable them to work together to address shared challenges. Across 2026-2030, we are expanding membership of Proteus to companies from sectors and value chains that interface with mining, infrastructure, renewable energy, agriculture, and forestry (among others). This cross-sectoral approach enables shared learning and joined up action across business operations, value chains and landscapes. We are addressing shared knowledge gaps to advance the evidence for robust action and supporting businesses as they apply this within their own contexts.

The mission of Proteus will be delivered through clear goals. Our goals are designed to deliver on the mission of Proteus and target core needs identified by businesses in progressing their action on nature. These goals are underpinned by workplans and deliverables that contribute towards outcomes across the 2026-2030 phase of Proteus.

## Goals



### **Goal 1: Advancing actionable knowledge and evidence for decision making**

Proteus helps businesses to integrate comprehensive nature-related assessments and evidence, aligned with biodiversity policy developments, into decision making across all functions, fundamentally shifting how nature is embedded in corporate processes

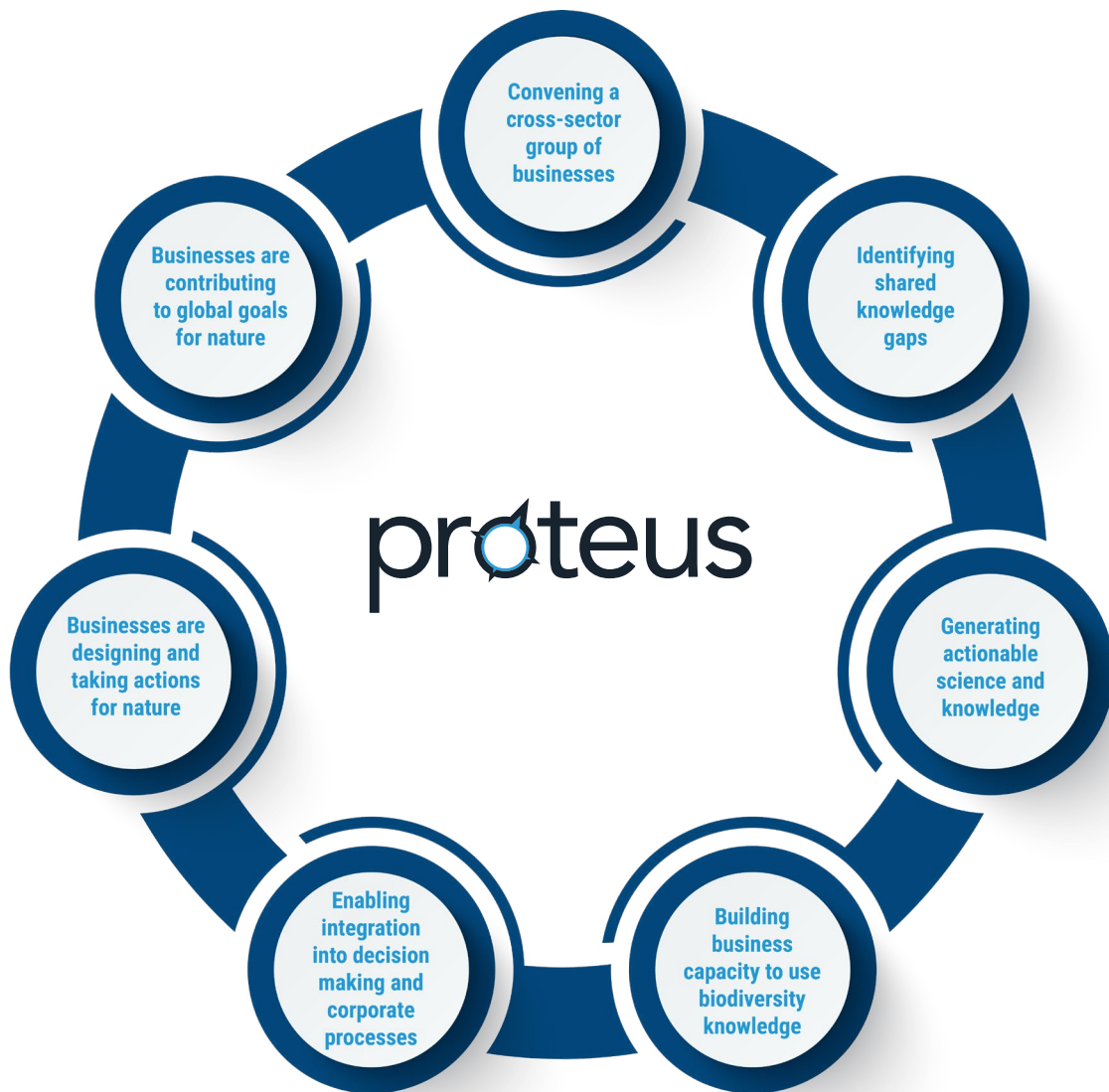


### **Goal 2: Enabling implementation in business practices**

Proteus equips businesses with the knowledge and capabilities to design and take actions that improve corporate biodiversity performance and enables them to work together to contribute to the resilience and sustainable use of biodiversity



Proteus works with a cross sector group of companies to generate and share actionable knowledge that enables companies to embed the values of nature into their business decisions and contribute to global goals for nature.





# Goal 1

# Goal 1: Advancing actionable knowledge and evidence for decision making

**Proteus helps businesses to integrate comprehensive nature-related assessments and evidence, aligned with biodiversity policy developments, into decision making across all functions, fundamentally shifting how nature is embedded in corporate processes**

**Proteus supports understanding of nature-related dependencies, impacts, risks and opportunities.**

Businesses require robust data, knowledge and evidence to assess and act on nature across their operations, portfolios and value chains.

Through Proteus, we harness UNEP-WCMC's biodiversity expertise to strengthen evidence on the connections between nature and business and how dependencies on nature translate to material business risks. We pioneer uptake of leading science in nature-related assessments.

**Partner company needs drive our investment in data, tools and research.**

Under Proteus, we have a long history of meeting business information needs through improvements in data quality and accessibility.

We make strategic investments in data to address specific business questions, for example on delivering Net Positive Impact (NPI), assessing impacts and dependencies that different sectors share, and identifying spatial connections through ecological connectivity.

**Our tools and guidance provide solutions to complex but important problems.**

We help companies interpret and design effective solutions based on the abundance of biodiversity data that are now available. This draws from and synthesises latest developments in technology, methods and data.

In collaboration with Proteus partners, we innovate and pilot to support use of appropriate methods and

metrics. This includes linking reporting frameworks to site-relevant outcomes and implementing nexus approaches (that consider biodiversity and people in tandem).

At the landscape scale we focus on making it possible for businesses to effectively engage and contribute towards actions such as expanding protected area coverage, restoring ecosystems and designing nature-based solutions that deliver multiple benefits.

**To be effective, nature considerations need to be embedded across the business.**

Regulators, governments, investors, customers and employees are placing increasing pressure on businesses to enhance their approaches to nature.

To respond effectively, all business functions have a role to integrate nature considerations into their decisions. We are continuing to develop actionable guidance and expand the 'Every Job is a Nature Job' initiative. We work with Proteus partners to further advance and embed these insights within their own organizations.

**Involvement in Proteus helps companies to scale their approaches in line with global biodiversity policy.**

The crucial role of business in enabling delivery of global goals is recognized in international policy frameworks. However, many businesses struggle to navigate intergovernmental processes and decisions.

We draw on UNEP-WCMC's policy expertise to provide unique insights, and provide regular updates on global policy developments and their implications for business.

This includes identifying opportunities for businesses to scale meaningful actions at global and local scales. For example, exploring benefits of landscape level actions for building business resilience and increasing positive outcomes for biodiversity and people, aligned with countries' national policy goals in National Biodiversity Strategies and Action Plans (NBSAPs).

The lessons learned from Proteus bolster other sector and business engagement initiatives.

In this phase, we are also continuing to leverage UNEP-WCMC's connections with various industry associations, business initiatives, and standard setters. This includes contributing technical inputs and strategic support to enable wider adoption of leading biodiversity science across businesses and sectors.

## Under this goal, the Proteus work programme delivers knowledge, data and insights that help partners undertake comprehensive nature assessments and take action on biodiversity across the business

### Facilitating comprehensive nature assessments

#### Development and improvements to data resources and tools

Investing in new and enhanced research, data and tools that advance solutions to challenges businesses face. Improving data quality in geographies of high relevance to Proteus partners.

#### Technology and data reviews

Supporting companies to navigate the abundance of biodiversity data, methods and technology and their applications.

#### Participation in, and technical support to, the growing landscape of business-biodiversity initiatives

Engagement with influential business-focused initiatives, certification bodies and standard setters to exchange insights, ensure the technical rigour of approaches and to maximize potential for positive outcomes.

#### Contributions to scientific publications

Supporting transmission of knowledge between business best practice and the scientific literature, to catalyze greater progress in both the business practitioner and academic communities.

#### Embedding nature considerations across the business

#### Enabling companies to integrate nature considerations across their business

Providing practical guidance and support for different corporate functions as part of the 'Every Job is a Nature Job' initiative.

### Bolstering the business case for action on nature

Supporting partners to communicate within their organization, including to leadership and C-Suite. This includes visual and written materials, attendance at meetings and delivery of training sessions.

### Navigating global biodiversity policies and processes

#### Updates and briefings on global policy developments

Summarizing relevant outcomes for businesses from meetings of the Convention on Biological Diversity, UN Environment Assembly, UNFCCC, IPBES, IUCN World Conservation Congress and other relevant events.

#### Highlighting key developments in regional or national policies

Building on UNEP-WCMCs policy work to share updates on relevant EU legislation (e.g. EUDR and CSRD) and progress updates on NBSAPs as applicable.

#### Disseminating outcomes from Proteus

Attending key business engagement and sector events to promote Proteus outputs and opportunities for scaling biodiversity action.



# Goal 2

# Goal 2:

## Enabling implementation in business practices

**Proteus equips businesses with the knowledge and capabilities to design and take actions that improve corporate biodiversity performance and enables them to work together to contribute to the resilience and sustainable use of biodiversity.**

**Proteus equips businesses with the technical knowledge to drive positive outcomes and adopt solutions in their context.**

Delivering appropriate action requires a business to have the technical knowledge and capabilities to translate ambition to positive outcomes for nature on the ground.

Through Proteus, we work with partners to understand shared technical and knowledge barriers and address them. We equip partners with the information resources and capacity required to take effective actions in the most important places.

Proteus partners have access to bespoke technical support and training from UNEP-WCMC's experts. This helps partners apply new and existing best-practices, data and guidance in their own specific business contexts.

**Intuitive business-focused tools underpin credible business action.**

We support the effective use of authoritative datasets and tools, including leading platforms such as IBAT and ENCORE and using them in tandem to meet business needs.

Integrating such tools into corporate policies and processes allows businesses to efficiently and effectively understand and act on biodiversity-related risks and opportunities. We build capacity across

Proteus partner companies to enable them to best utilise these tools within different business areas and contexts.

**Proteus convenes companies to learn from each other's collective experience.**

In our Proteus Annual Meeting we create space for candid discussion and sharing between partners on lessons learned from scaling biodiversity action.

The Nature Action Dialogues provides a further opportunity to connect Proteus into a wider group of business, finance and conservation organisations to exchange insights, best practice and key developments.

Our cross-sector dialogue and workshop sessions provide regular opportunities for partners to convene around shared challenges and opportunities.

This enables all Proteus partner companies to collectively make fast progress towards improving their biodiversity performance.

**Proteus partners leverage their shared expertise to drive action across sectors and value chains**

Pre-competitive engagement enables businesses to scale best-practice and identify solutions that span sectors and value chains.

We enable partners to coalesce around shared challenges and use UNEP-WCMC's technical expertise to innovate and pilot solutions. For example, identifying and evaluating actions that address value chain or landscape links between companies.

Through Proteus, we support companies to develop robust processes and policies for biodiversity management.

In this phase, we will continue to strengthen corporate approaches to developing and implementing nature strategies, including risk screening, impact and dependency assessments, and biodiversity management methods. Proteus partners are also encouraged to share their own expertise with each other through peer reviews and sharing experiences.

**Under this goal, Proteus works with partner companies to build their capacity to translate understanding of business interactions with nature into effective and appropriate actions.**

### **Building capacity**

#### **Technical discussion papers and technical briefs**

Written synthesis and guidance to help partners understand and act in response to key scientific and policy developments.

#### **Technical support**

Bespoke support and training from UNEP-WCMC experts to help partners effectively apply biodiversity information resources in their company context.

### **Providing intuitive business-focused tools**

#### **Access to the Integrated Biodiversity Assessment Tool (IBAT)**

As part of Proteus, partners have access to a top-tier IBAT subscription and direct user support from both the UNEP-WCMC technical team and IBAT secretariat.

#### **Data queries**

Unlimited direct support to partners regarding queries on access, interpretation and quality of biodiversity data.

### **Convening experts to share best practices**

#### **Nature Action Dialogues**

Technical exchange with a huge range of practitioners across the business, finance and conservation sectors, with an agenda shaped by the interests of Proteus partners.

#### **Proteus Annual Meeting**

A closed forum for Proteus partner peer-sharing of successes, lessons learned, questions and solutions.

#### **Cross-sector dialogues and workshops**

Online peer-sharing sessions drawing on case studies of how different businesses in different sectors address similar topics and challenges.

#### **Combined piloting of new methods and approaches**

Working with multiple Proteus partners to innovate and pilot solutions to shared challenges.

#### **Peer support**

Sharing of case studies and facilitated peer reviews of technical approaches between Proteus partner companies to enable scaling of best practices and sharing of lessons learned and technical knowledge.



# Proteus will contribute to positive outcomes

Through Proteus we work with corporate and group-level nature leads and practitioners to embed the values of nature across business decisions.

We support companies to implement rigorous and recognised approaches to addressing their relationships with nature. We enable business action at multiple levels including setting robust corporate-wide policies, managing nature at operational sites, addressing impacts and dependencies in the upstream and downstream value chain, and contributing to positive outcomes in wider landscapes and seascapes.

Taken together, these approaches enable Proteus partners to advance business leadership on biodiversity and contribute to global efforts to halt and reverse nature loss.

	Goal 1: Advancing actionable knowledge and evidence for decision making	Goal 2 - Enabling implementation in business practices	Outcomes
<b>Corporate processes</b>	Proteus helps businesses to integrate comprehensive nature-related assessments and evidence, aligned with biodiversity policy developments, into decision making across all functions, fundamentally shifting how nature is embedded in corporate processes	Proteus equips businesses with the knowledge and capabilities to design and take actions that improve corporate biodiversity performance and contribute to the resilience and sustainable use of biodiversity.	Companies systematically embed the values of nature and best practices in biodiversity management across the business, leading to a reduction in negative impacts and an increase in positive impacts on biodiversity.
<b>Operations and sites</b>	Proteus helps companies to understand the biodiversity values that their sites impact and depend on and build the business case for action to protect and enhance them.	Proteus facilitates adoption of robust approaches to managing site-level biodiversity impacts based on the principles of sustainable production and the mitigation hierarchy.	Companies adopt robust biodiversity management practices at operations and sites that contribute to efforts to halt and reverse biodiversity loss.
<b>Value chains</b>	Proteus supports companies to understand nature-related impacts and dependencies in their upstream and downstream value chains, and how these translate into business risks and opportunities.	Proteus helps businesses to identify and evaluate actions that influence interactions with nature in the value chain and apply these actions in their own contexts.	Business value chain interactions with nature are well understood and used as a mechanism to drive improved performance on nature across sectors.
<b>Landscapes &amp; seascapes</b>	Proteus helps companies understand how they and other stakeholders depend on nature in landscapes and seascapes, and how they can build resilience by acting for nature at these scales.	Proteus enables businesses to prioritize landscapes and seascapes and design appropriate interventions that respect local needs and interests.	Businesses routinely look beyond their operational boundaries to support conservation, restoration, and sustainable use of nature at landscape scales with positive outcomes for people and nature.

# Governance and participation in Proteus

**Proteus partner companies are committed to supporting positive outcomes for people and nature.**

Proteus enables pre-competitive engagement across businesses. We provide a trusted space for peer-sharing and learning between business and biodiversity experts.

We work with companies who are willing to engage with the Proteus work programme and enter technical dialogue with a cross-sector group of peers to catalyze collective progress.

Our regular engagements with Proteus partners shape our multi-year programme of work, providing inputs that contribute to an evolving workplan.

We are continuing to build greater awareness of Proteus among business and conservation audiences. Existing partners are also encouraged to help scale the reach of Proteus. For example, by engaging with other industry initiatives to support the wider uptake of knowledge generated through Proteus. We also welcome partners making connections that support our cross-sector expansion aims, for example by fostering collaboration with companies in their value chains or that operate in the same landscapes.

**Proteus mobilizes resources to create momentum for change.**

Proteus is a voluntary collaboration between businesses and UNEP-WCMC, underpinned by the UNEP principles for private sector engagement. Proteus is administered through a Memorandum of Understanding (MoU) between WCMC<sup>1</sup> and each company. To access the full range of benefits and enable long term progress to be delivered, the MoU structure is designed for companies that commit to Proteus for multiple years.

We are seeking £4.5 million in investment across 2026-2030 for full implementation of our comprehensive workplan and delivery of the full

range of benefits to Proteus partners. Investment beyond this amount will allow us to pursue additional opportunities and innovations that benefit Proteus and partner companies.

To participate in the 2026-2030 phase of Proteus, each company makes an annual financial contribution to the Proteus workplan. These contributions are combined across the full partnership and with other sources of funding to secure even greater value and impact. A company's contribution includes access to the Integrated Biodiversity Assessment Tool (IBAT) at the highest subscription tier.<sup>2</sup>

For companies committing to join in 2026 the financial contribution for 2026-2028 has been maintained at the same level as 2025, and includes an upgrade to the highest IBAT subscription level. We are also able to offer companies that commit to joining Proteus before the end of 2026 a discounted 5-year IBAT subscription price, reducing their total contribution cost across the five years.

For companies joining between 2027 to 2030, the additional contribution reflects the cost of IBAT subscriptions over this period.

Recognizing the importance of developing a model capable of delivering the full benefits of Proteus over the five-year phase, an increase of GBP 5,000 is necessary in 2029-2030.

	Companies joining in 2026	Companies joining from 2027 onwards
2026	GBP 80,000	N/A
2027	GBP 80,000	GBP 85,000
2028	GBP 80,000	GBP 85,000
2029	GBP 85,000	GBP 90,000
2030	GBP 85,000	GBP 90,000

To leverage economies of scale that can be achieved through the Proteus model, annual contributions are tiered based on the size of Proteus. Once we reach 16 partners, and for every additional five partners thereafter, the subsequent annual contribution will be reduced by GBP 5,000.

On a case-by-case basis, UNEP-WCMC may be able to consider discounted rates for businesses based in the Global South or with lower operating revenues.

<sup>1</sup> WCMC is the UK Charity which collaborates with UNEP in the operations of UNEP-WCMC

<sup>2</sup> More information on the IBAT subscription levels can be found at: <https://www.ibat-alliance.org/pricing>

Pilot packages or annual MoUs may also be available on a case-by-case basis, but these will not provide access to the full range of Proteus benefits.

### The Proteus Annual Meeting

The Proteus Annual Meeting consists of the Nature Action Dialogues and closed meeting day for Proteus Partners.

The Nature Action Dialogues is an open event that convenes leaders from business, finance and conservation to collectively tackle nature loss. Input from Proteus partners shapes the themes and topics addressed at the Nature Action Dialogues, and partners receive exclusive access to this event for up to three individuals from their organization.

The closed meeting day provides space for deeper technical discussions and peer-sharing between Proteus partners. It also provides a focused opportunity for partner companies to review the strategic aims of Proteus and inform our work programme.

### Proteus workplans and deliverables contribute towards outcomes across the 2026-2030 phase of Proteus.

By engaging in Proteus, companies commit to supporting our vision, mission and goals.

The workplan of Proteus is determined by UNEP-WCMC, in consultation with partner companies. We adopt a collaborative approach with Proteus partners to understand the key challenges and barriers that they face in scaling biodiversity action.

The achievements and benefits of Proteus are identified in collaboration with Proteus partners. We work with partners to understand how Proteus contributes towards enhanced biodiversity management policies and practices in their business.

This allows us to determine areas of focus for Proteus, such as conducting research, investing in data or convening experts for facilitated dialogues.

UNEP-WCMC commits to reporting on progress in implementing the work programme both through annual meetings and via periodic written reports made available to partner companies.



# Key Achievements of Proteus

## Significant advances in data and knowledge

Protected areas data - Proteus has enabled significant investments and improvements in the quality of the World Database on Protected and Conserved Areas (WDPCA), the authoritative global source for data on protected areas and other effective area-based conservation measures (OECMs). Used by decision-makers worldwide, the WDPCA provides reliable data for business decision making. Proteus partners utilise this for risk screening, no-go commitments, and opportunity identification.

>200,000 increase in WDPCA records since 2003

96% of records represented by spatial boundaries (polygons) compared to 20% in 2003

Global biodiversity data and knowledge for business needs – Proteus has led the development and maintenance of new global biodiversity datasets that directly address business needs. Proteus has created various knowledge resources and guidance for strengthening use of data in business and directly supported Proteus partners to use a range of global biodiversity data within their decision-making processes.

Created screening layers for Critical, Natural and Modified Habitat aligned with the definitions in International Finance Corporation Performance Standard 6

Developed global data on locations of important marine and coastal habitat types e.g. corals, mangroves and seagrasses.

Converting data to insights – Proteus has underpinned the creation of leading tools allowing users from business and beyond to extract insights from complex biodiversity datasets, such as the Integrated Biodiversity Assessment Tool (IBAT), Ocean+ Habitats, and the Biodiversity A-Z.

>9,500 IBAT reports generated by Proteus partners since 2018

>2 million Biodiversity A-Z website views from over 200 countries

## Translating knowledge to business action on biodiversity

Business commitments to positive impact – Proteus has mainstreamed adoption of No Net Loss and Net Positive Impact commitments in the extractives sector, underpinned by robust technical methods grounded in the Mitigation Hierarchy and supported by No Go commitments in areas of the highest importance for biodiversity.

27 companies advised on their biodiversity strategies and commitments

Catalysed engagement on nature – Proteus has provided expert technical support and training to Proteus partners to help them operationalise biodiversity action across the business. This has included strengthening corporate policies, nature strategies and biodiversity management methodologies. Under 'Every Job is a Nature Job', action-orientated guidance and support has built momentum across different business functions.

Between 2021-2025:

>2,400 hours of technical assistance provided

>2,000 company employees trained

A network of expert practitioners working together – Proteus has fostered peer-sharing and collaborative knowledge exchange between industry peers, different business sectors, and the public and private sectors to accelerate collective progress towards significant business contributions towards meeting global goals for nature.

>50 knowledge exchange webinars

Convening multiple sectors through the Proteus Annual Meeting and Nature Action Dialogues

# About UNEP-WCMC

**The UN Environment Programme World Conservation Monitoring Centre (UNEP-WCMC) is UNEP's specialist Centre on biodiversity**

The UN Environment World Conservation Monitoring Centre (UNEP-WCMC) is a global Centre of excellence on biodiversity. The Centre operates as a collaboration between UN Environment Programme and the UK registered charity WCMC. Together, we are confronting the global crisis facing nature. We do this through our unique position ensuring that science, knowledge and insights shape global and national policy, and by collaborating with partners around the world to build capacity and create innovative solutions to environmental challenges. We use our position as respected custodians of powerful and trusted environmental data to create positive impact for nature.

**Achieving our vision of a world living in harmony with nature will require transformative and systemic change across all sectors.**

UNEP-WCMC will continue to strengthen our work to build capacity and bring innovative approaches for the conservation, restoration and sustainable use of nature on land and in the ocean. We will work with partners to bring and support the use of best available data, knowledge and digital innovation for effective policy and practice across public and private sectors for the benefit of people and nature. We will work across both natural and managed areas, including an increased focus on cities and urban areas, to strengthen our delivery with partners at the local, national and regional levels, while continuing our global reach and impact.



More information on Proteus  
can be found on the website  
**[www.proteuspartners.org](http://www.proteuspartners.org)**

or contact the Proteus  
team at UNEP-WCMC:  
**[proteus@unep-wcmc.org](mailto:proteus@unep-wcmc.org)**