



proteus

An overview of IBAT and Proteus resources

Alfred Muge, Programme Officer, UNEP-WCMC

ENGIE

3rd December 2024

ABOUT THIS TRAINING





- This training course was developed by UNEP-WCMC through the Proteus Partnership. It draws on material developed under the Proteus Partnership, and with reference to material co-developed by UNEP-WCMC and other organisations specifically for the energy sector.
- This training course has been created for ENGIE and may include material provided by ENGIE including information on policies and processes, and case studies from current and past operations. The inclusion of this material does not imply endorsement by the United Nations Environment Programme, UNEP-WCMC, or the authors.
- The designations employed and the presentation of the material in this training course do not imply the expression of any opinion whatsoever on the part of the Secretariat of the United Nations concerning the legal status of any country, territory or city or area or its authorities, or concerning the delimitation of its frontiers or boundaries. For general guidance on matters relating to the use of maps in publications please go to un.org/Depts/Cartographic/english/htmain.html.
- The views expressed in this training course are those of the authors and do not necessarily reflect the views of the United Nations Environment Programme. We regret any errors or omissions that may have been unwittingly made.

TRAINING OBJECTIVES

- Participants will:
 - Have a better understanding of how IBAT can be used as part of the biodiversity screening process at **site level** and **portfolio level**
 - Be aware of other Proteus platforms and tools that can support their work



WHAT IS IBAT?

- Stands for Integrated Biodiversity Assessment Tool
- A web-based map & reporting tool that provides fast, easy & integrated access to critical biodiversity information
- An alliance between:
 -  CONSERVATION INTERNATIONAL
 -  IUCN
 -  BirdLife INTERNATIONAL
 -  Partnership for nature and people
- The source of the most globally authoritative biodiversity data:
 - The World Database on Protected Areas (WDPA)
 - The World Database of Key Biodiversity Areas (WD-KBA)
 - The IUCN Red List of Threatened Species
 - Species Threat Abatement and Restoration metric (STAR)
- Used by over 28,000 users from 275 organisations in 15 sectors

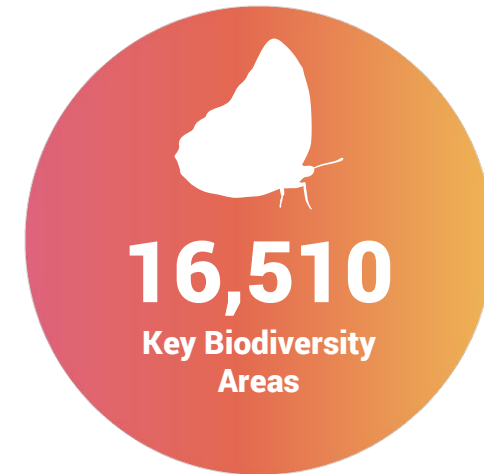


IBAT DATASETS

The World Database on Protected Areas (Updated monthly)

The World Database of Key Biodiversity Areas (Updated around 3 times a year)

The IUCN Red List of Threatened Species (Updated around 3 times a year)



* IBAT is a **mature platform** and the only place where each of these datasets is available for commercial users

AREAS IMPORTANT FOR BIODIVERSITY

- Protected areas can be designated at national levels or under international or regional conventions and agreements
- Key Biodiversity Areas are scientifically recognised for their biodiversity importance

National protected areas

Designated under national processes or law

Different naming schemes exist in every country

IUCN management categories often used to describe the management approach

Regional protected areas

Based on regional conventions agreed by governments

e.g. Natura 2000 in Europe

e.g. Regional Seas conventions (OSPAR, HELCOM, Barcelona, etc)

International protected areas

Based on international conventions/agreements between many governments

e.g. World Heritage

e.g. Ramsar Wetlands of International Importance

e.g. UNESCO Man and the Biosphere

Key Biodiversity Areas

Based on scientifically agreed criteria

Includes Alliance for Zero Extinction (AZE) sites


Includes Important Bird and Biodiversity Areas (IBAs)

REPORTS FOR EARLY-STAGE PROJECT SCREENING

- Proximity Report identifies important biodiversity features near project sites
- Freshwater Report is like proximity report but looks at only freshwater species within upstream and downstream watersheds
- PS6 & ESS6 Report for early screening against IFC and World Bank performance standards
- STAR Report provides further information on significance of threats facing species
- All these reports are primarily useful for **project developers** at country/site level



UNEP-WCMC

 Alfred



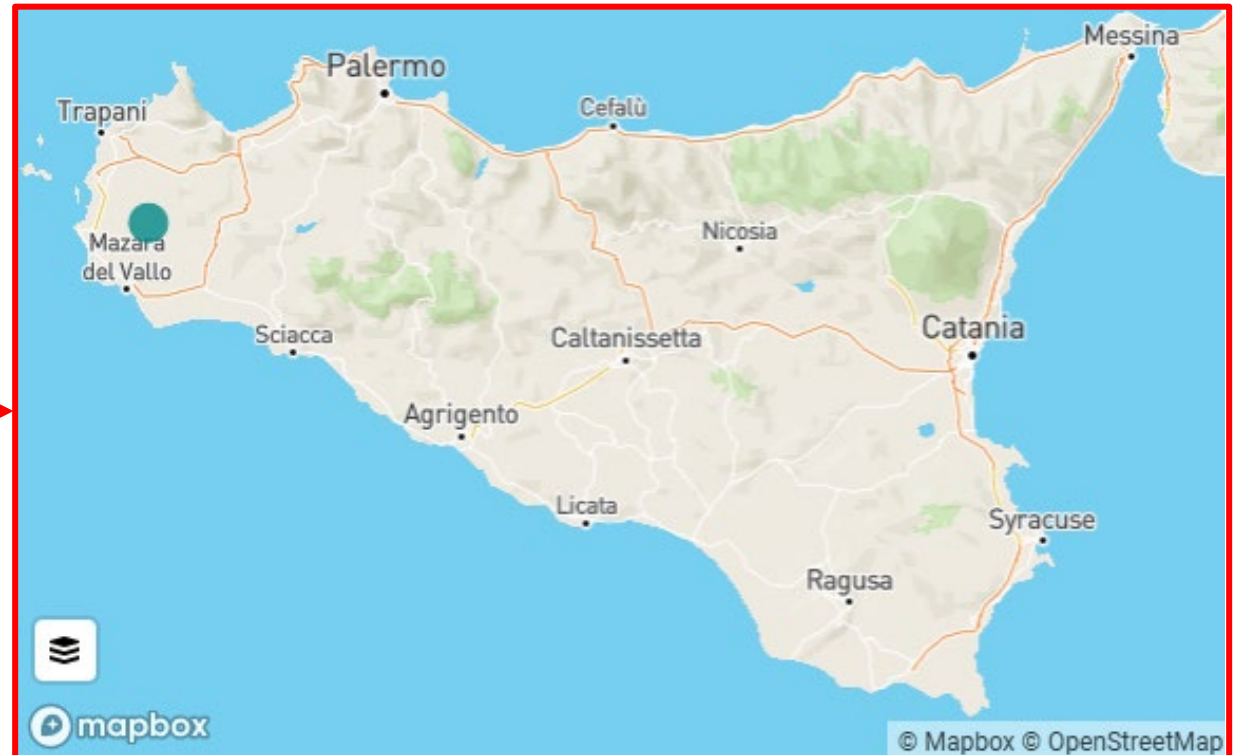
Create report

Disclosure STAR PS6 & ESS6 Proximity Multi-site Freshwater

Select a report type to begin.

IBAT: EXAMPLE PROXIMITY REPORT

- This example report is made using an onshore wind project site located in southern Italy
- **Proximity Report:** Report in PDF and lists triggered Key Biodiversity Areas, protected areas & species in CSV plus maps for Key Biodiversity Areas & protected areas



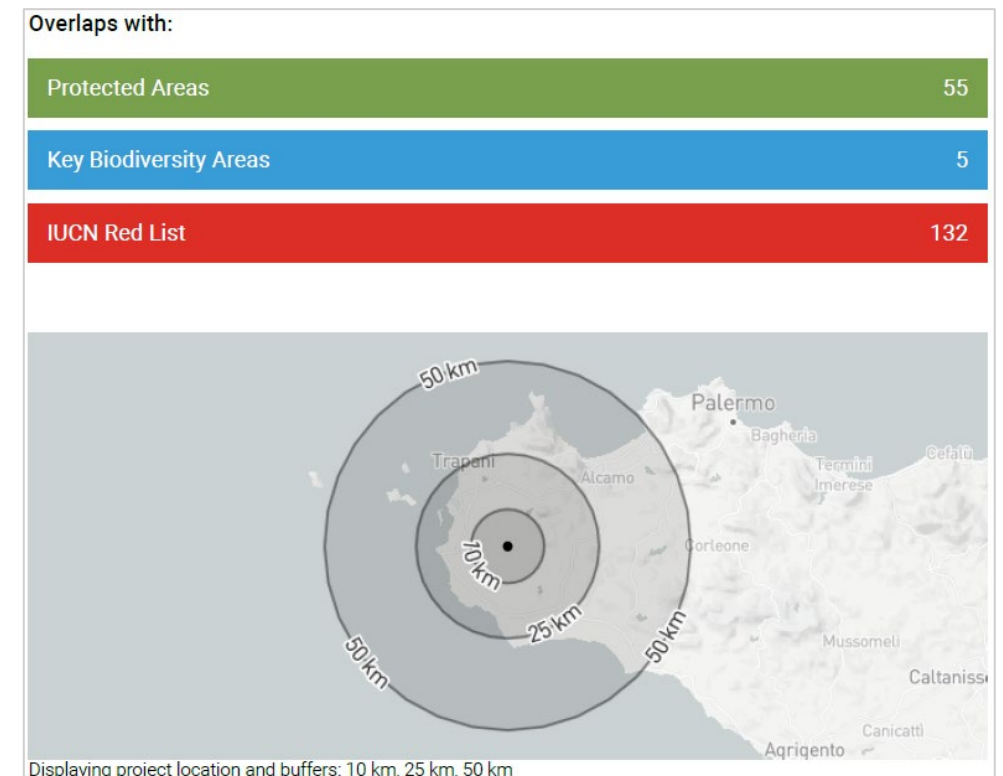
IBAT: EXAMPLE PROXIMITY REPORT

- Proximity analysis to identify species, protected areas and Key Biodiversity Areas located within user-defined buffers (10, 25 & 50 km) of the wind site
- Provides an early indication of potential biodiversity concerns and can provide valuable early information for making decisions

IBAT

Integrated Biodiversity Assessment Tool
PROXIMITY REPORT
ONSHORE WIND SITE

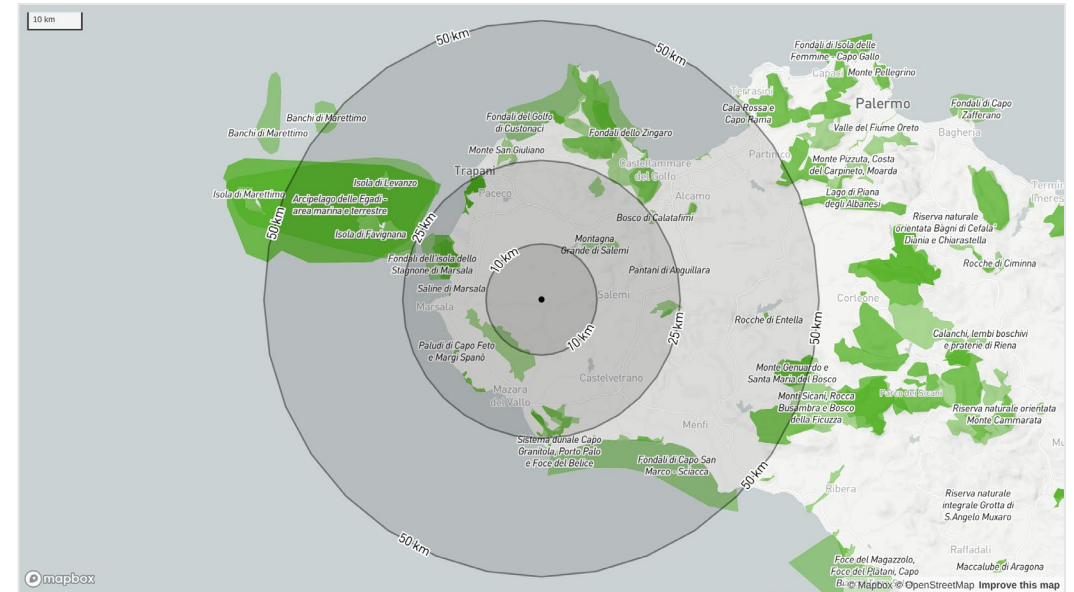
Country: Italy
Location: [37.8, 12.7]
Date of analysis: 19 November 2024 (GMT)
Buffers applied: 10 km | 25 km | 50 km
IUCN Red List Biomes: Marine, Freshwater, Terrestrial
Generated by: Alfred Muge
Organisation: UNEP-WCMC



IBAT: PROXIMITY REPORT

Protected Areas:

- Site profile: Indicates **55** within 50 km
- Report: Indicates **1** within 10 km, **45** between 10 & 50 km, and **9** between 25 & 50 km
- Use: Help focus attention on protected sites by:
 - Initial identification of any of these sites triggered using global data – WDPA
 - Basis for further site level investigation and due diligence such as national and/or local conservation priorities



Protected Areas

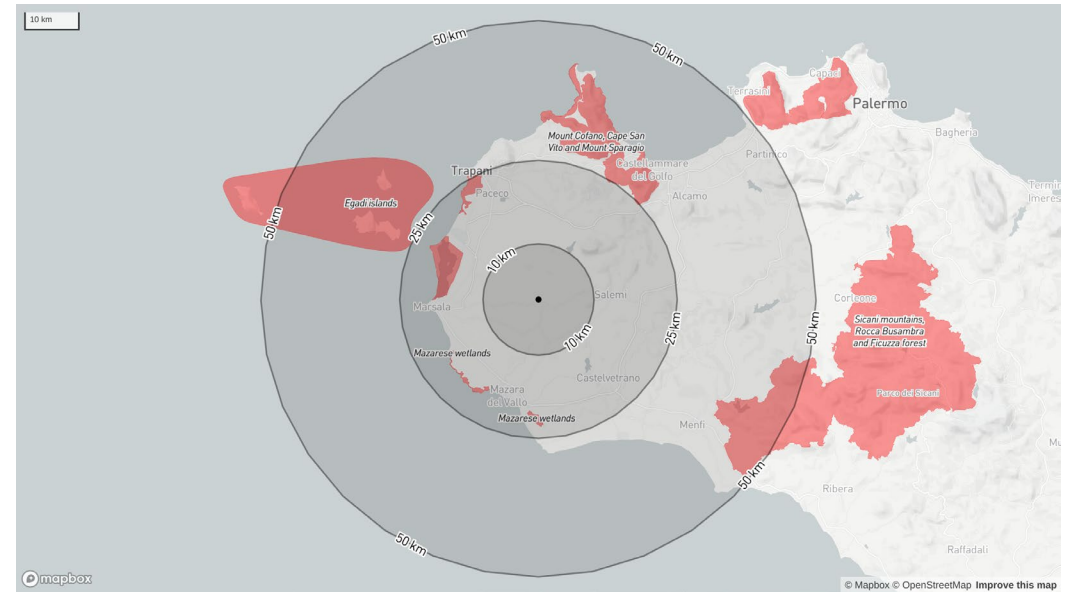
The following protected areas are found within 10 km, 25 km, 50 km of the area of interest. For further details please refer to the associated csv file in the report folder.

Area name	Within buffer of
Sciare di Marsala	10 km
Arcipelago delle Egadi - area marina e terrestre	25 km
Bosco di Calatafimi	25 km
Complesso Monte Bosco e Scorace	25 km
Complesso Monti di Santa Ninfa - Gibellina e Grotta di Santa Ninfa	25 km
Fondali dell'isola dello Stagnone di Marsala	25 km

IBAT: PROXIMITY REPORT

Key Biodiversity Areas:

- Site profile: Indicates **5** within 50 km
- Report: Indicates **3** within 25 km and **2** between 25 & 50 km
- Use: Help focus attention on scientifically recognised areas of importance by:
 - Initial identification of any of these areas triggered using global data – WD-KBA
 - Basis for further site level investigation and due diligence such as national and/or local conservation priorities



Key Biodiversity Areas

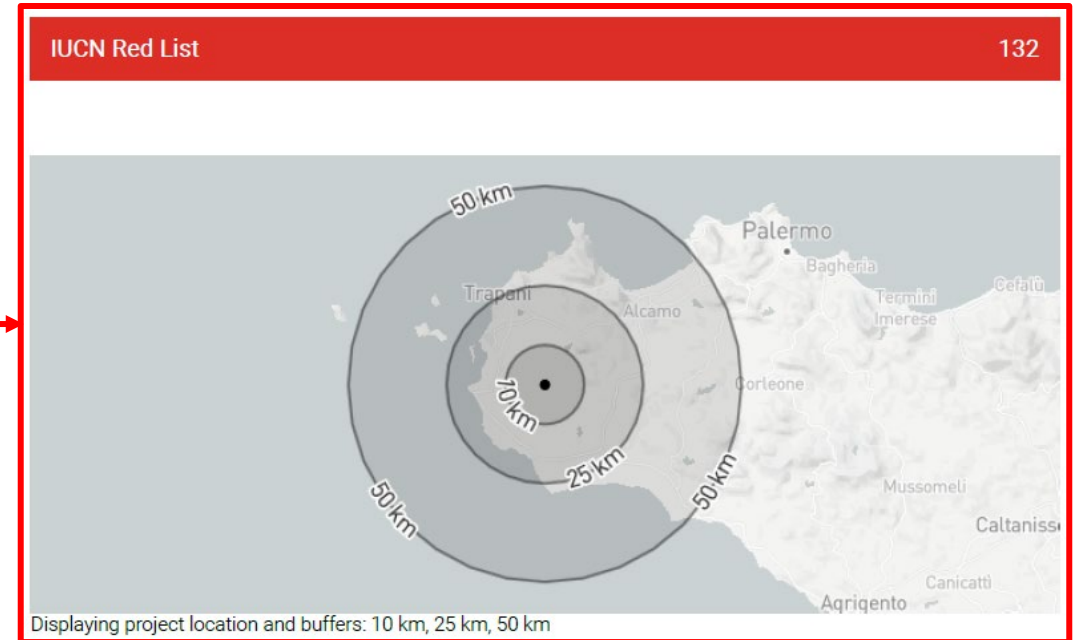
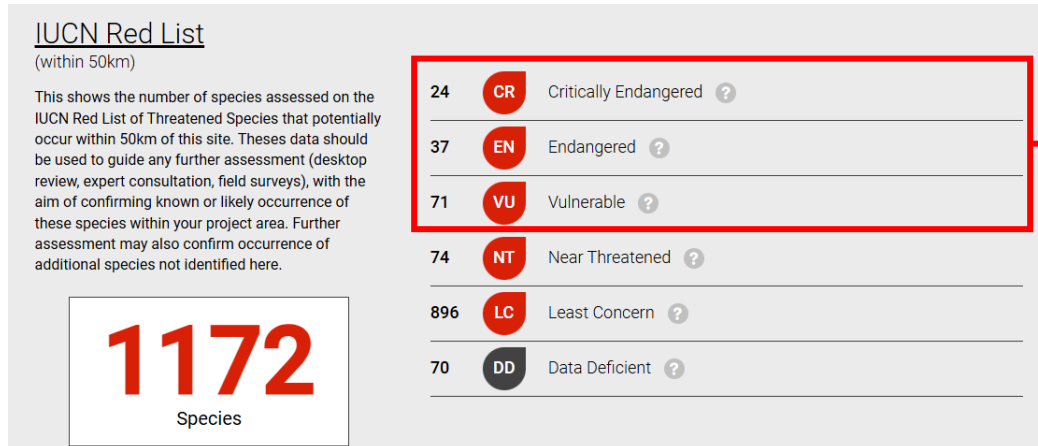
The following key biodiversity areas are found within 10 km, 25 km, 50 km of the area of interest. For further details please refer to the associated csv file in the report folder.

Area name	Distance
Mazarese wetlands	25 km
Mount Cofano, Cape San Vito and Mount Sparagio	25 km
Stagnone di Marsala and Trapani salt pans	25 km
Egadi islands	50 km
Sicani mountains, Rocca Busambra and Ficuzza forest	50 km

IBAT: PROXIMITY REPORT

Threatened Species:

- Site profile: **1172** Red List species within 50 km
- Report: **132** Threatened species (CR, EN and VU) within 50 km
- Use: Identifies key species of concern



IUCN Red List of Threatened Species

The following threatened species are potentially found within 50km of the area of interest.

For the full IUCN Red List please refer to the associated csv in the report folder.

Species Name	Common Name	Taxonomic Group	IUCN Category	Population Trend	Biome
Carcharias taurus	Sand Tiger Shark	CHONDRICHTHYES	CR	Decreasing	Marine
Eretmochelys	Hawksbill Turtle	REPTILIA	CR	Decreasing	Terrestrial,

IBAT: FRESHWATER REPORT

- Identifies freshwater species located within user-defined buffers (e.g. 50, 100 & 150 km)
- Provides an early indication of potential species in upstream and downstream watersheds
- Contains information on threatened species plus their migratory status and threat status (CR, EN or VU)

New Freshwater report

Site

Ranges Define the upstream and downstream range for the report below.

Upstream (KM)		Downstream (KM)	
Zone	Distance	Zone	Distance
1	<input type="text" value="50"/>	1	<input type="text" value="50"/>
2	<input type="text" value="100"/>	2	<input type="text" value="100"/>
3	<input type="text" value="150"/>	3	<input type="text" value="150"/>
4	Beyond Zone 3	4	Beyond Zone 3

[Create Freshwater Report](#)



Integrated Biodiversity Assessment Tool FRESHWATER REPORT ONSHORE WIND SITE

Country: Italy

Location: [37.8, 12.7]

Date of analysis: 26 November 2024 (GMT)

Upstream: 50 km | 100 km | 150 km

Downstream: -50 km | -100 km | -150 km

Generated by: Alfred Muge

Organisation: UNEP-WCMC

IBAT: PS6 & ESS6 REPORT

- Identifies biodiversity features that align with criteria for Critical Habitat based on International Finance Corporation and World Bank performance standards
- Provides an initial screening for Critical Habitat triggers within 50 km of a site
- Contains information on CR & EN species, restricted range species, protected areas and Key Biodiversity Areas

New PS6/ESS6 report

Site:

Biomes:

Select at least 1 biome

Create PS6/ESS6 Report



Integrated Biodiversity Assessment Tool World Bank Group Biodiversity Risk Screen

ONSHORE WIND SITE

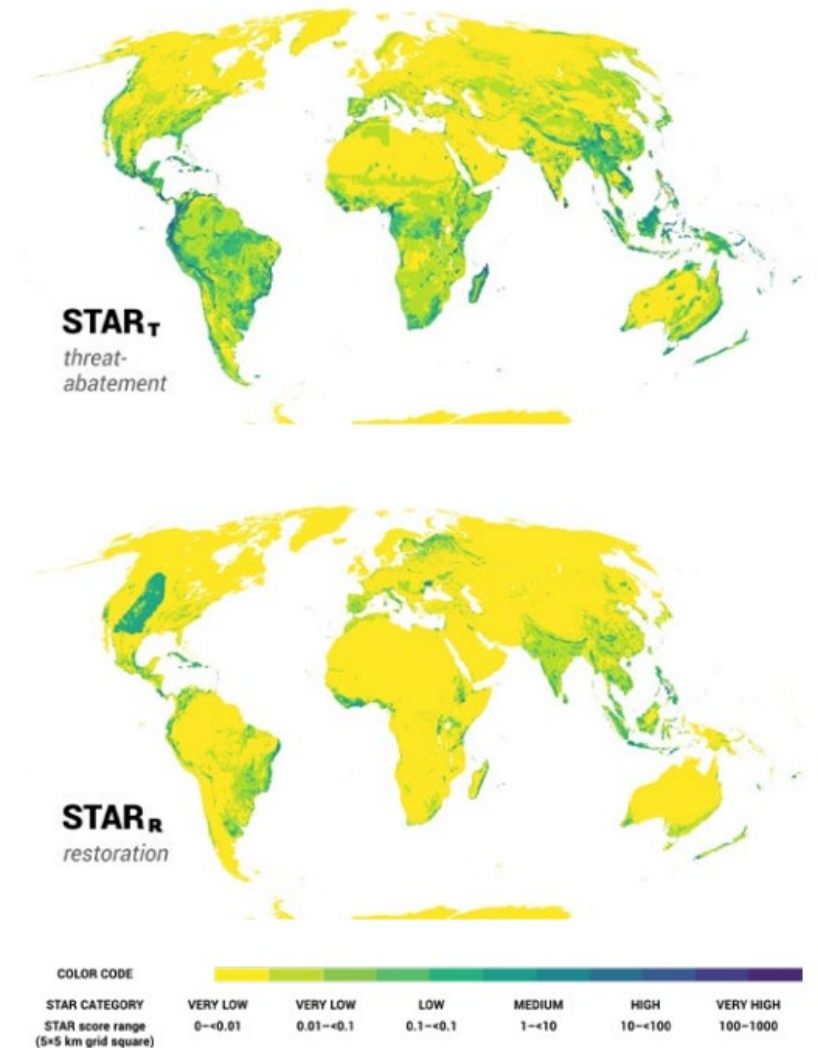
- Country: Italy
- Location: [37.8, 12.7]
- IUCN Red List Biomes: Marine, Freshwater, Terrestrial
- Created by: Alfred Muge

Overlaps with:

Protected Areas	1 km: 0	10 km: 1	50 km: 54	55
World Heritage (WH)	1 km: 0	10 km: 0	50 km: 0	0
Key Biodiversity Areas	1 km: 0	10 km: 0	50 km: 5	5
Alliance for Zero Extinction (AZE)	1 km: 0	10 km: 0	50 km: 0	0
IUCN Red List				61
Critical Habitat				Likely

DEEPER INFORMATION ABOUT SPECIES THROUGH THE STAR METRIC

- STAR stands for Species Threat Abatement and Restoration
- STAR data in IBAT is based on the IUCN Red List of Threatened Species
- STAR highlights important threats facing species around a site
- It can inform actions to reduce threats and restore habitats



REPORTS FOR PORTFOLIO-LEVEL SCREENING

- **Disclosure Preparation** and **Multi-site Reports** for analysing the biodiversity-related features of multiple locations, for example to support corporate disclosure (e.g. TNFD, GRI)
- These reports are primarily useful for the **Research and Development team** at global level in the ENGIE head office

Create report

Disclosure STAR PS6 & ESS6 Proximity Multi-site Freshwater

Select a report type to begin.

Integrated Biodiversity Assessment Tool

The world's most
authoritative biodiversity
data for your world-shaping
decisions

Create account

Disclosure Preparation Report now available in IBAT



Last data update
30/09/2024

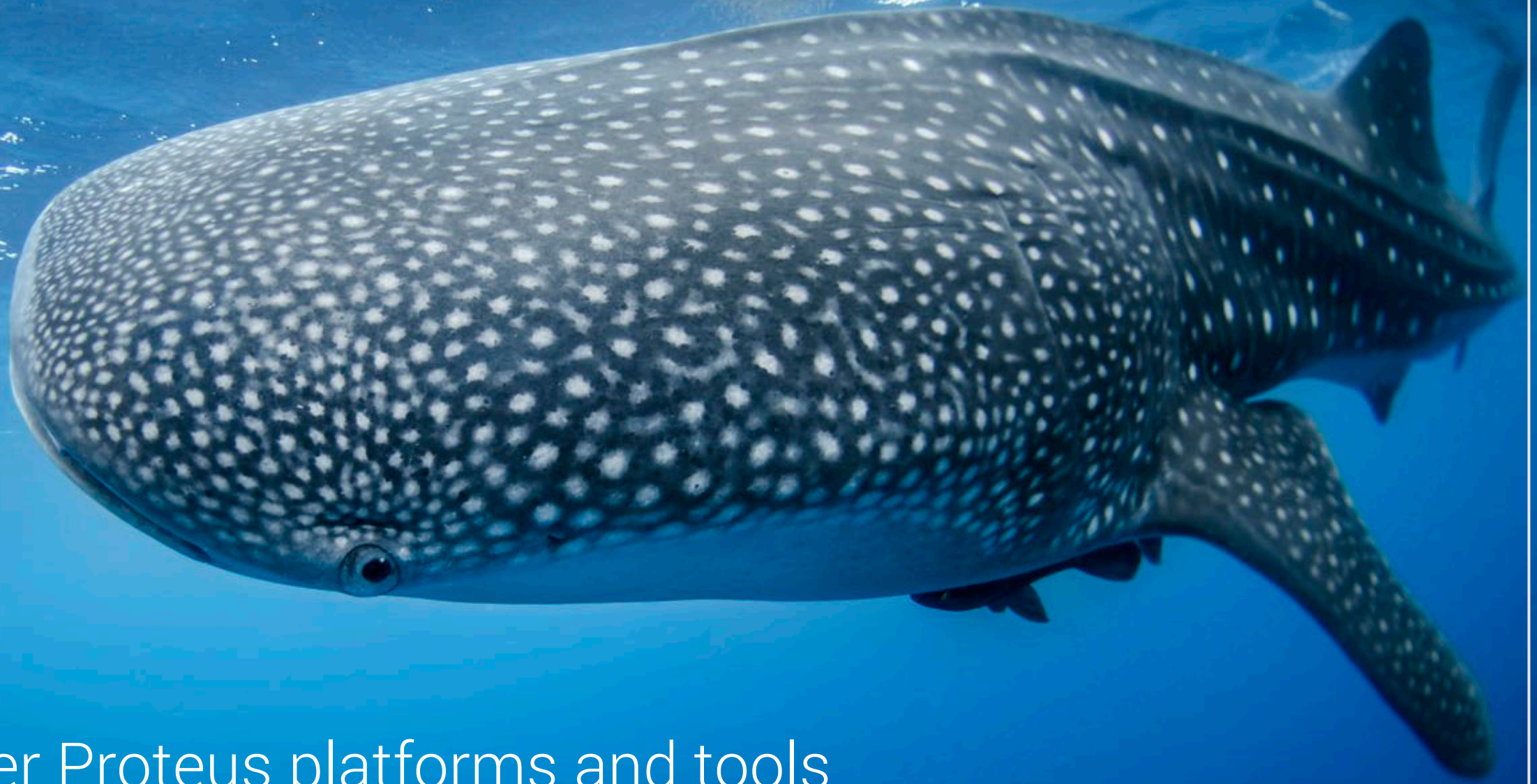


Demo

Bringing Data to Life

Service Catalogue

Sample Reports



Other Proteus platforms and tools

WEBSITES, PORTALS & PLATFORMS

The logo for Proteus, featuring the word "proteus" in a lowercase, sans-serif font. The letter "o" is stylized with a circular arrow around it.

Website for accessing Proteus resources and knowledge products

The logo for UNEP-WCMC Resources, consisting of the UN logo, "WCMC", and "RESOURCES" in a blue box.

Portal for accessing resources (including data) generated by UNEP-WCMC

The logo for Ocean+ Habitats, featuring the text "Ocean+" in white on a dark blue background, with "Habitats" below it.

Platform for accessing marine and coastal information, knowledge and data

The logo for Biodiversity a-z, featuring the word "BIODIVERSITY" in blue and "a-z" in red.

Reference for key terms or acronyms relating to biodiversity

The logo for IBAT, featuring the letters "IBAT" in a bold, black, sans-serif font with a small white flower icon inside the letter "I".

Tool for interrogating key biodiversity spatial datasets



OCEAN+ HABITATS - WHAT

- Developing national, regional and global inventories of ocean habitat occurrence, with statistics on coverage and progress toward targets



Warm-water corals



Cold-water corals



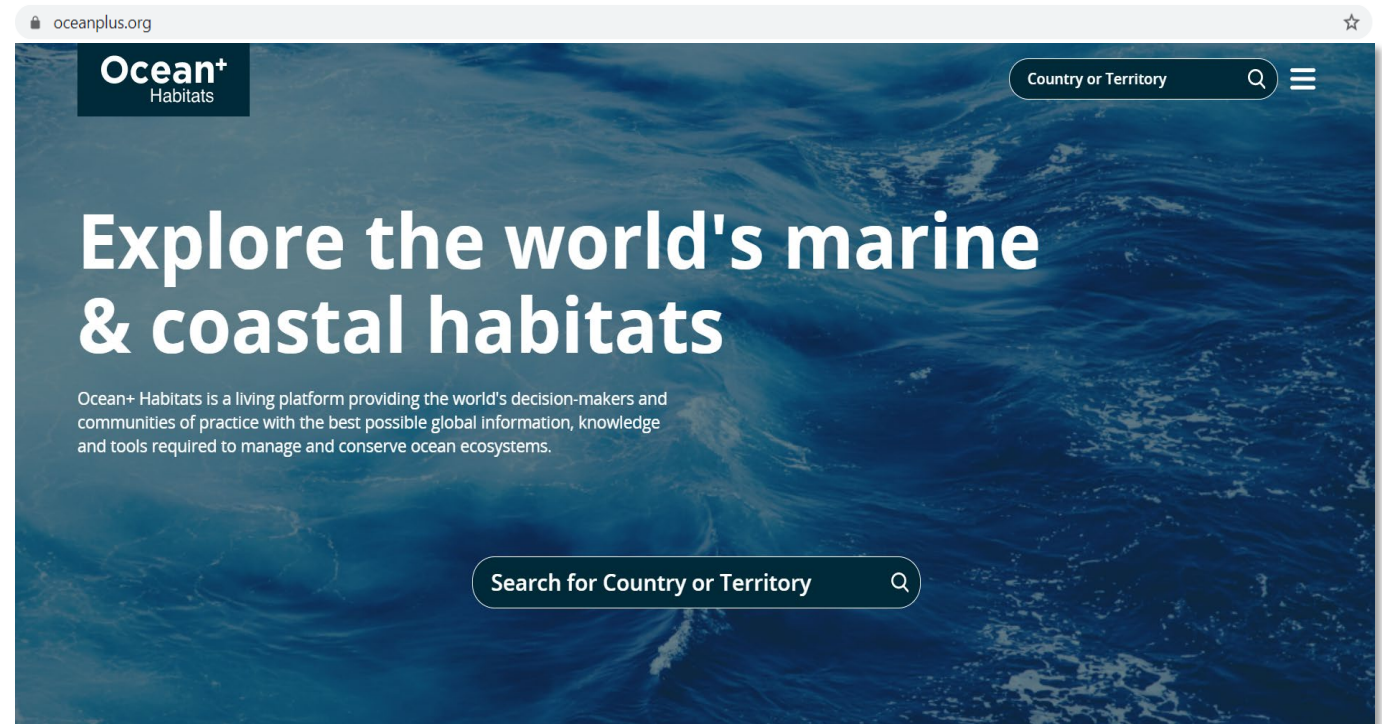
Seagrasses



Saltmarshes

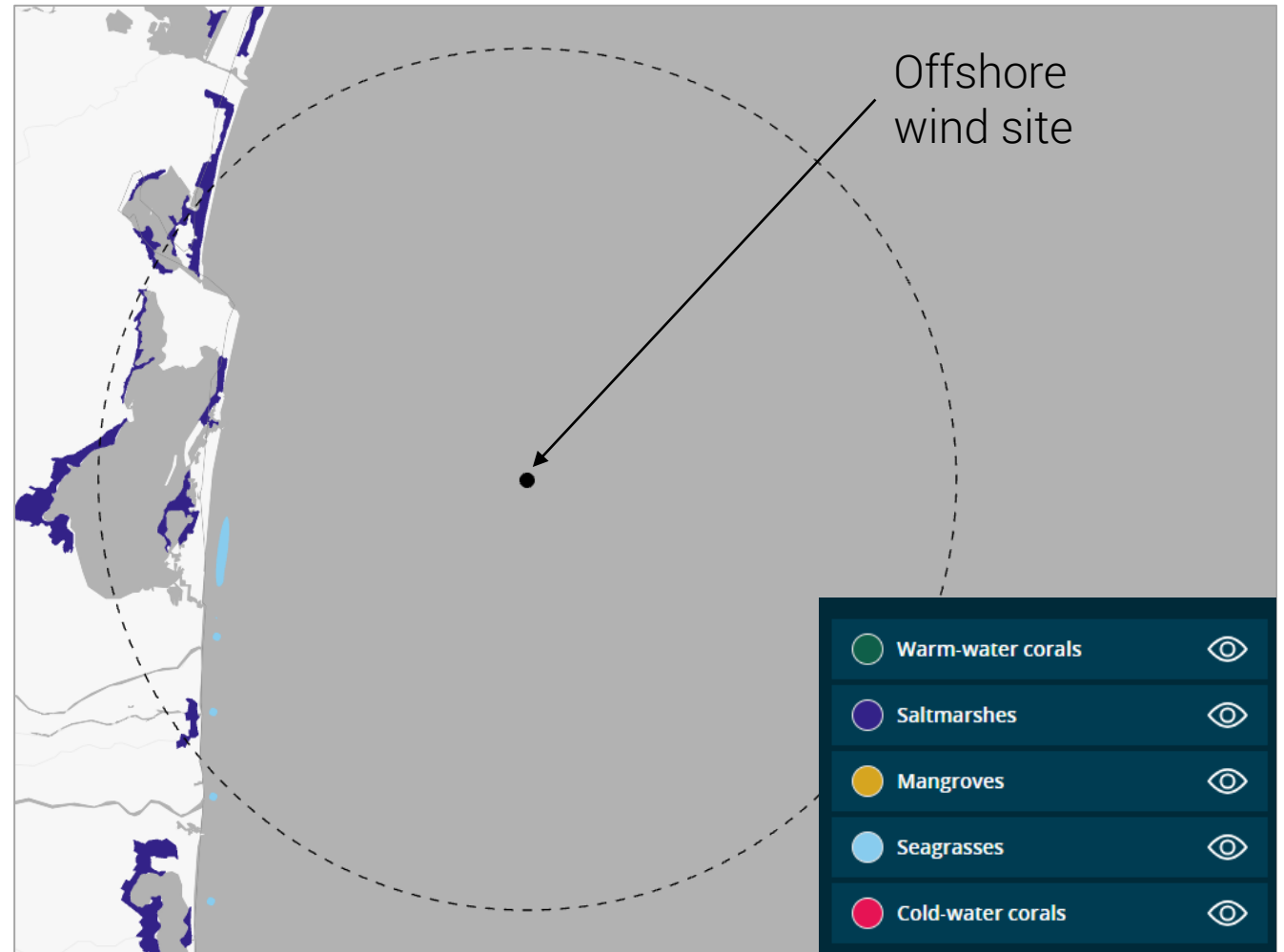


Mangroves



OCEAN+ HABITATS - EXAMPLE SITE

- Some coverage of **saltmarshes** and **seagrasses** within 20 km – *further site investigation needed, likely to be present*
- No coverage of **mangroves**, **cold-water corals** and **warm-water corals** within 20 km – *unlikely to be present*





Questions

UN 
**environment
programme**

WCMC