



proteus

Updates to the Critical Habitat screening layer: Version 2.0

Dr Sebastian Dunnett

Senior Programme Officer, UNEP-WCMC

7TH DECEMBER 2023

WELCOME

Objectives of the Proteus Data Forum sessions

- A venue for direct communication between data users and technical experts
- Increase familiarity with Proteus resources
- Peer-to-peer learning between Proteus Partner companies
- Identifying common challenges & finding solutions

Logistics

- *Frequency* quarterly
- *Rules* Chatham House discussion, but presentations recorded

AGENDA

Presentation: Updates to the Critical Habitat screening layer 2023

- What is Critical Habitat and the global Critical Habitat screening layer?
- Why update the global Critical Habitat screening layer?
- Differences between versions 1.0 and 2.0 of the layer
- Quick demonstration of the layer
- Accessing and using the updated layer

Peer-to-peer discussion

- Q&A with presenters
- Feedback from Partners

A scenic view of a mountain range with a forest in the foreground and a clear blue sky. The mountains are layered, with some peaks covered in snow. The foreground shows a dense forest of evergreen trees.

What is Critical Habitat and the global Critical Habitat screening layer?

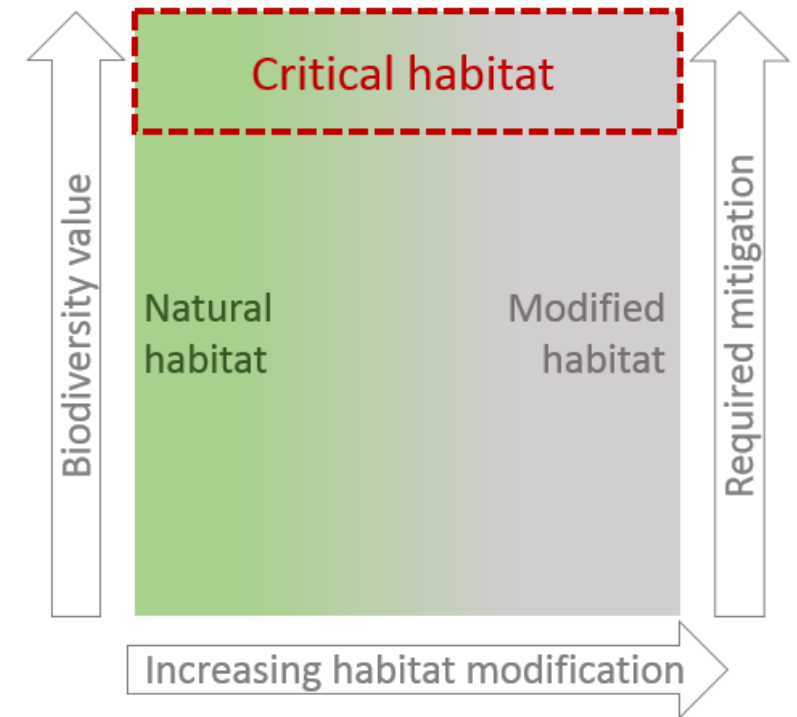
WHAT IS CRITICAL HABITAT?

Defined in International Finance Corporation Performance Standard 6 (IFC PS6).

A subset of Modified and Natural Habitat.

Areas with high biodiversity value, including:

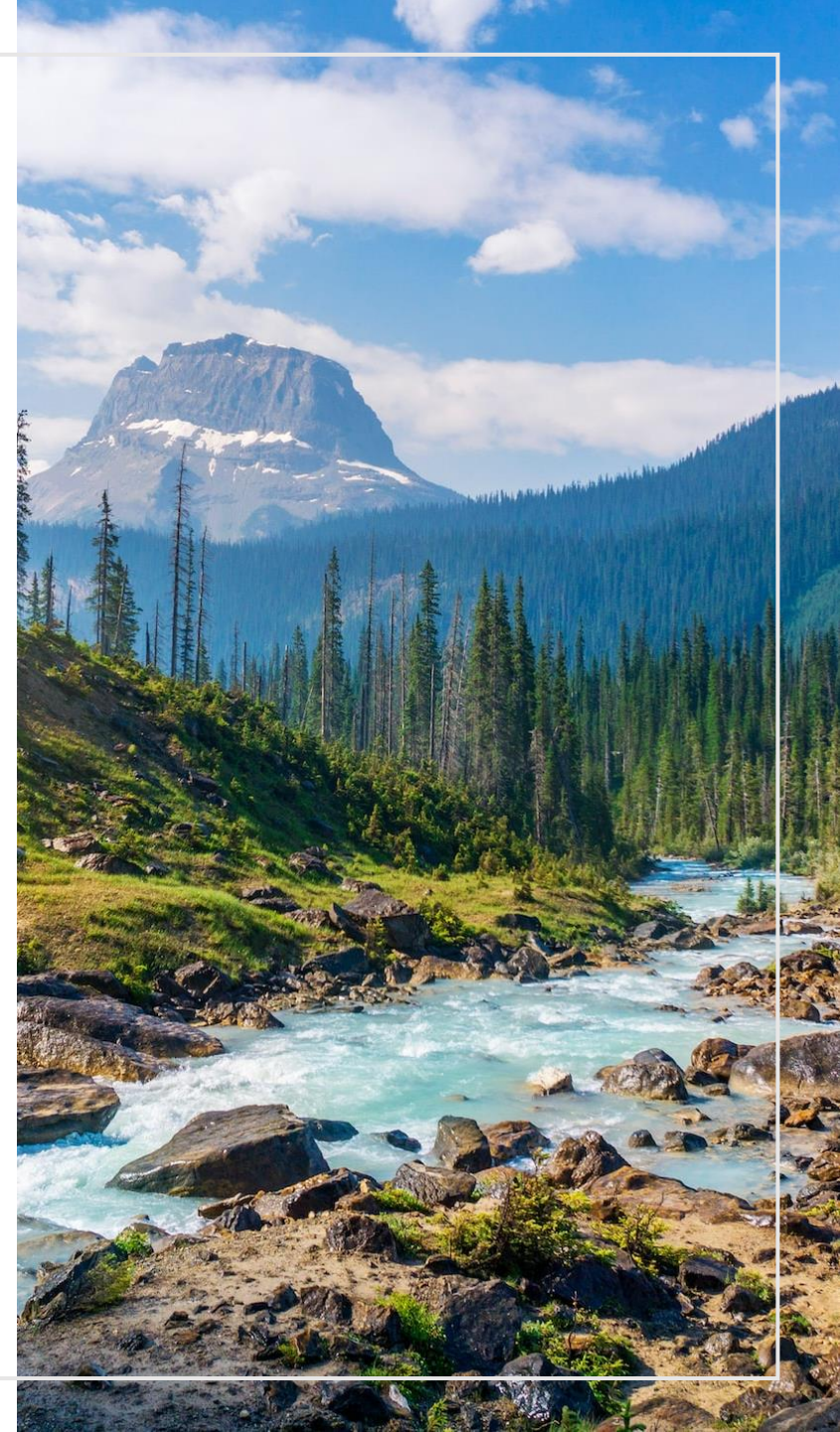
- **C1:** Habitat of importance to CR and/or EN species
- **C2:** Habitat of importance to endemic and/or restricted-range species
- **C3:** Habitat supporting globally significant concentrations of migratory species and/or congregatory species
- **C4:** Highly threatened and/or unique ecosystems
- **C5:** Areas associated with key evolutionary processes.



UNEP-WCMC (2017)

WHAT IS THE CRITICAL HABITAT SCREENING LAYER?

- Global screening layer aligned with the Critical Habitat definition in IFC PS6.
- Version 1.0 launched in 2017 based on IFC GN6 published in 2012.
- **All data:** global in extent; marine and terrestrial; assembled using a standardised protocol; best available for features of interest; and of sufficient resolution.
- Layer heavily used by Proteus Partners.

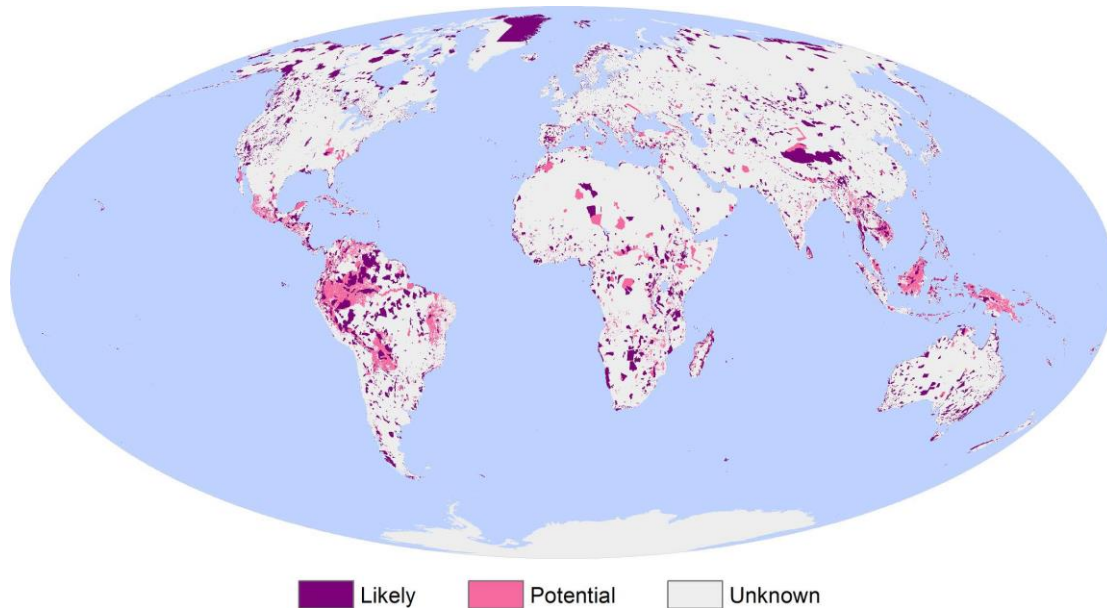


ORIGIN OF THE SCREENING LAYER

RESEARCH ARTICLE

Global screening for Critical Habitat in the terrestrial realm

Kerstin M. Brauner^{1c}, Chloe Montes^{1c,a}, Simon Blyth¹, Leon Bennun^{2,3}, Stuart H. M. Butchart^{3,4}, Michael Hoffmann⁵, Neil D. Burgess¹, Annabelle Cuttler^{6,b}, Matt I. Jones¹, Val Kapos¹, John Pilgrim², Melissa J. Tolley¹, Emma C. Underwood⁷, Lauren V. Weatherdon¹, Sharon E. Brooks^{1c,*}



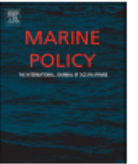
Marine Policy 53 (2015) 45–53



Contents lists available at ScienceDirect

Marine Policy

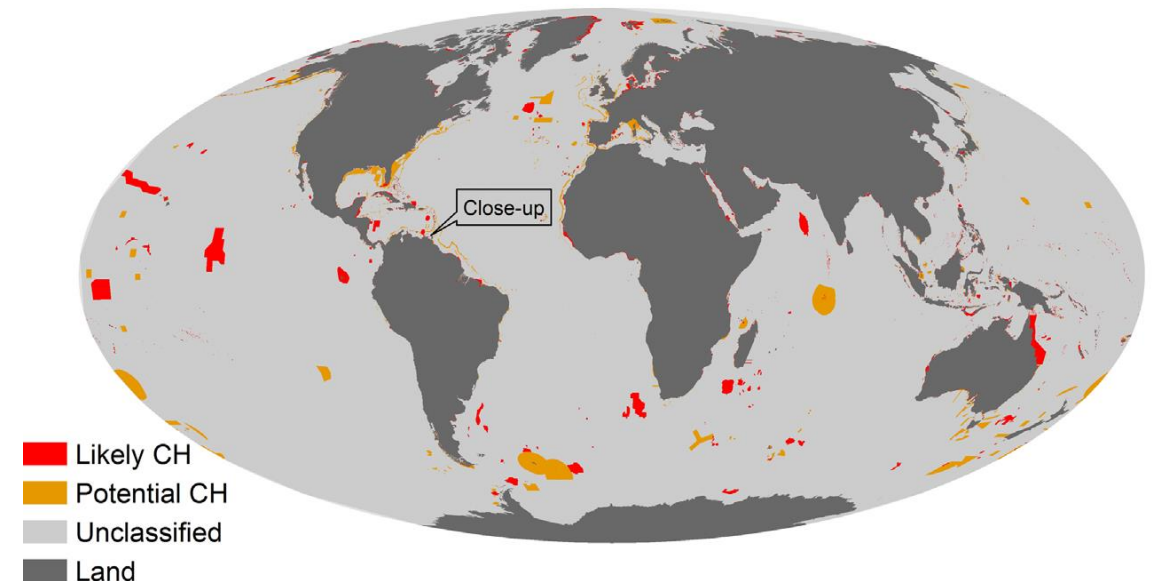
journal homepage: www.elsevier.com/locate/marpol



A global map to aid the identification and screening of critical habitat for marine industries



C.S. Martin^{a,*}, M.J. Tolley^a, E. Farmer^a, C.J. Mcowen^a, J.L. Geffert^{a,b}, J.P.W. Scharlemann^c, H.L. Thomas^a, J.H. van Bochove^{a,c}, D. Stanwell-Smith^a, J.M. Hutton^a, B. Lascelles^d, J.D. Pilgrim^e, J.M.M. Ekstrom^e, D.P. Tittensor^{a,f,g}

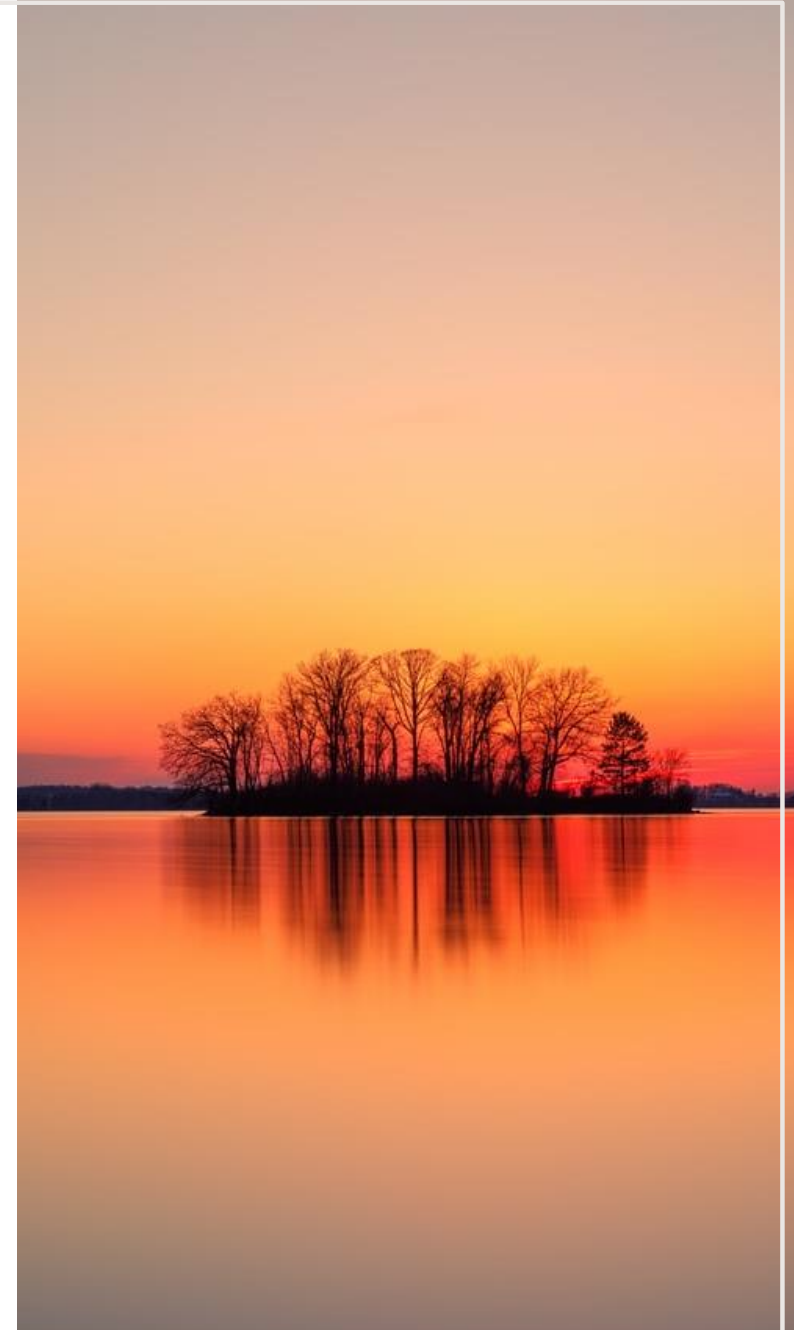




Updates to the Critical Habitat screening layer for v2.0

WHY UPDATE THE LAYER?

- New and updated data
 - Underpinning data updated regularly
 - Protected areas, KBAs, Red List species, saltmarshes, mangroves, seagrass beds, cold/warm water corals
 - New suitable datasets have become available
 - Intact Forest Landscapes, Tropical Moist Forests, IMMAs
- Updated IFC guidance (GN6) in 2019
 - [Changes to interpretation of criteria for Critical Habitat](#)
- Partner feedback
 - Need for easier filtering in GIS software

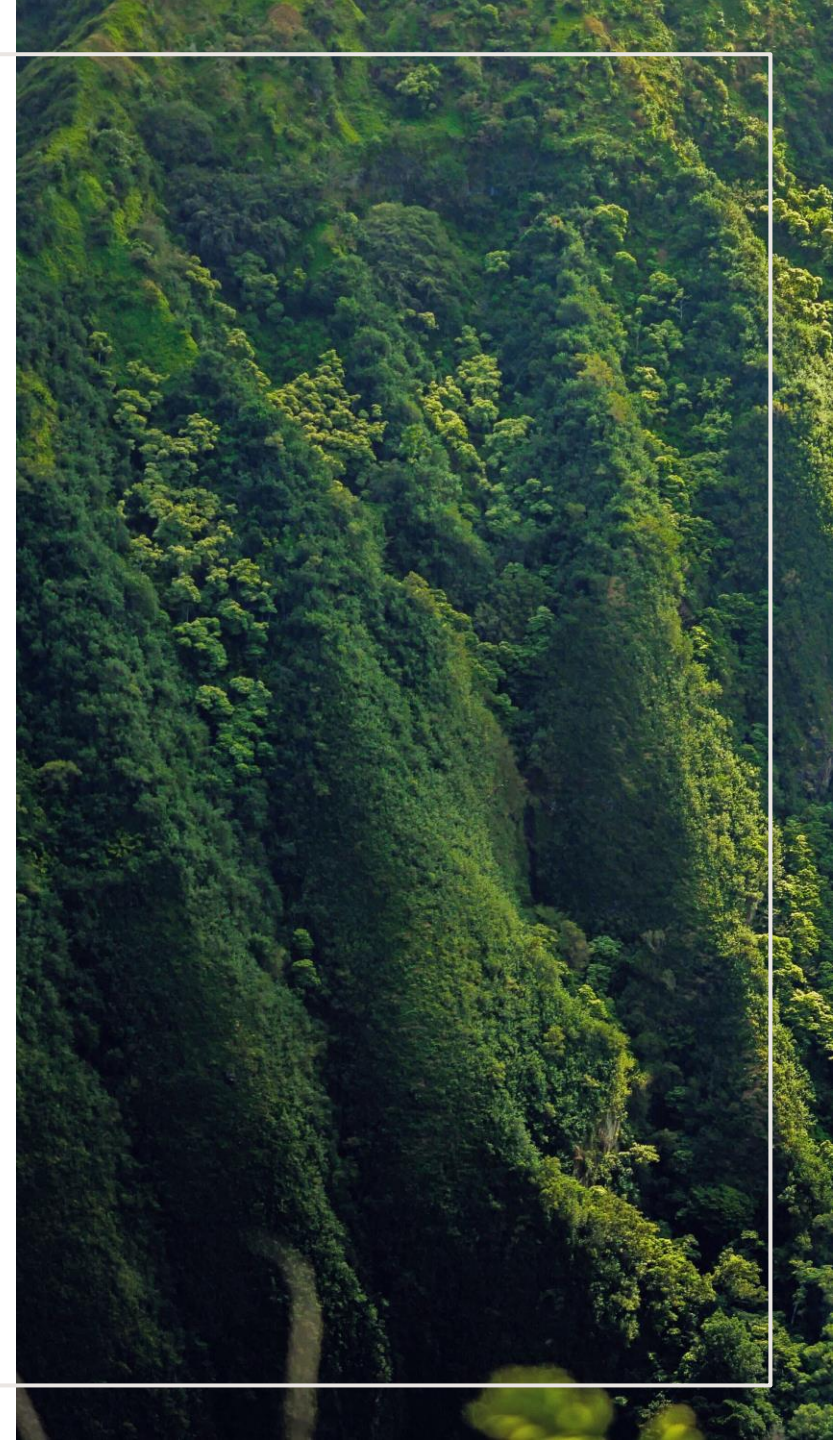


WHY UPDATE THE LAYER?

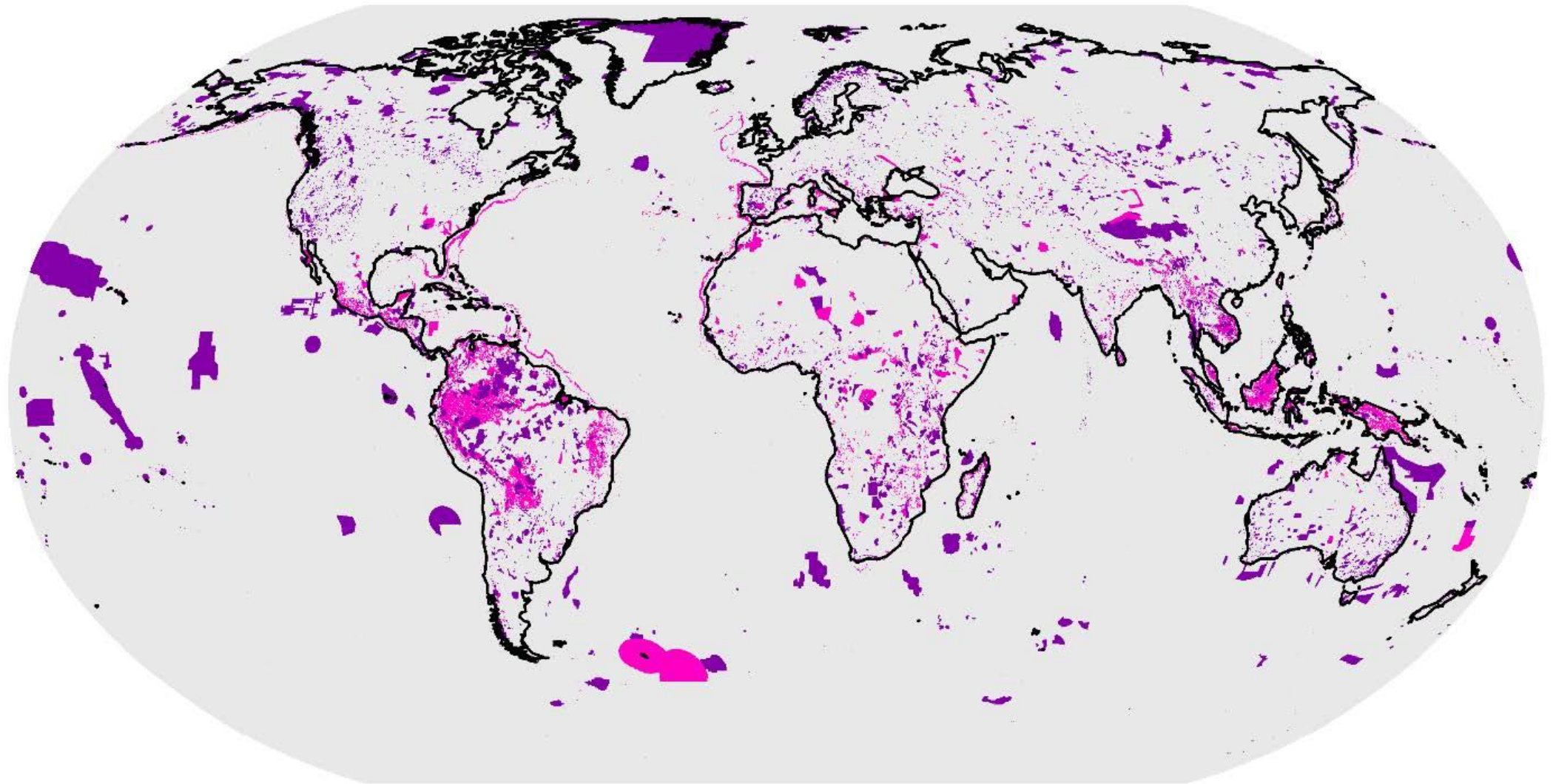
Reviewed and updated underpinning data to reflect updates and developments in available global-scale biodiversity data.

Alignment of datasets with Critical Habitat criteria updated based on the 2019 version of GN6.

New fields added to the raster attribute table for the features and Critical Habitat criteria under which each area is triggered.



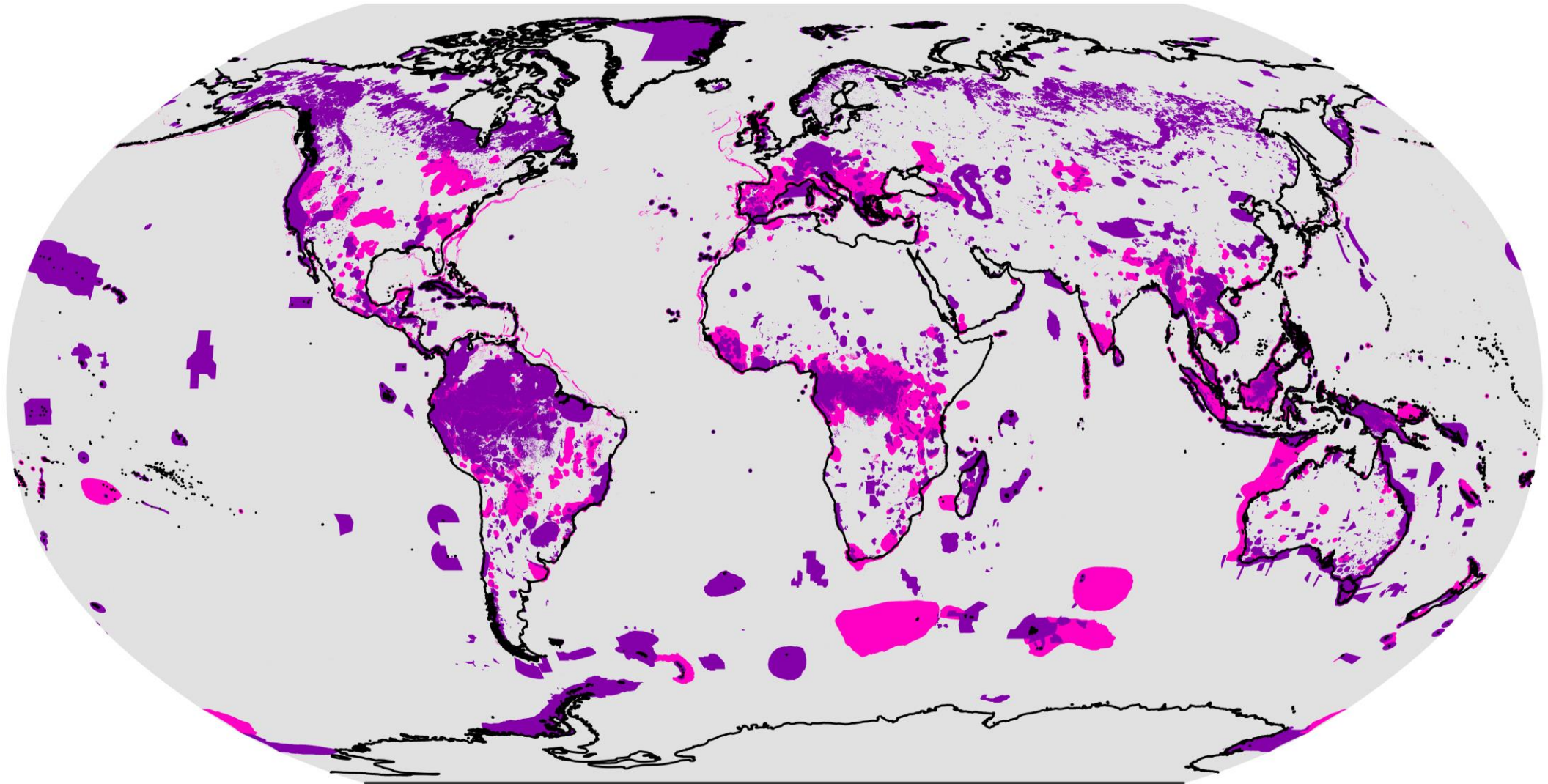
VERSION 1.0



 LIKELY  POTENTIAL  UNCLASSIFIED

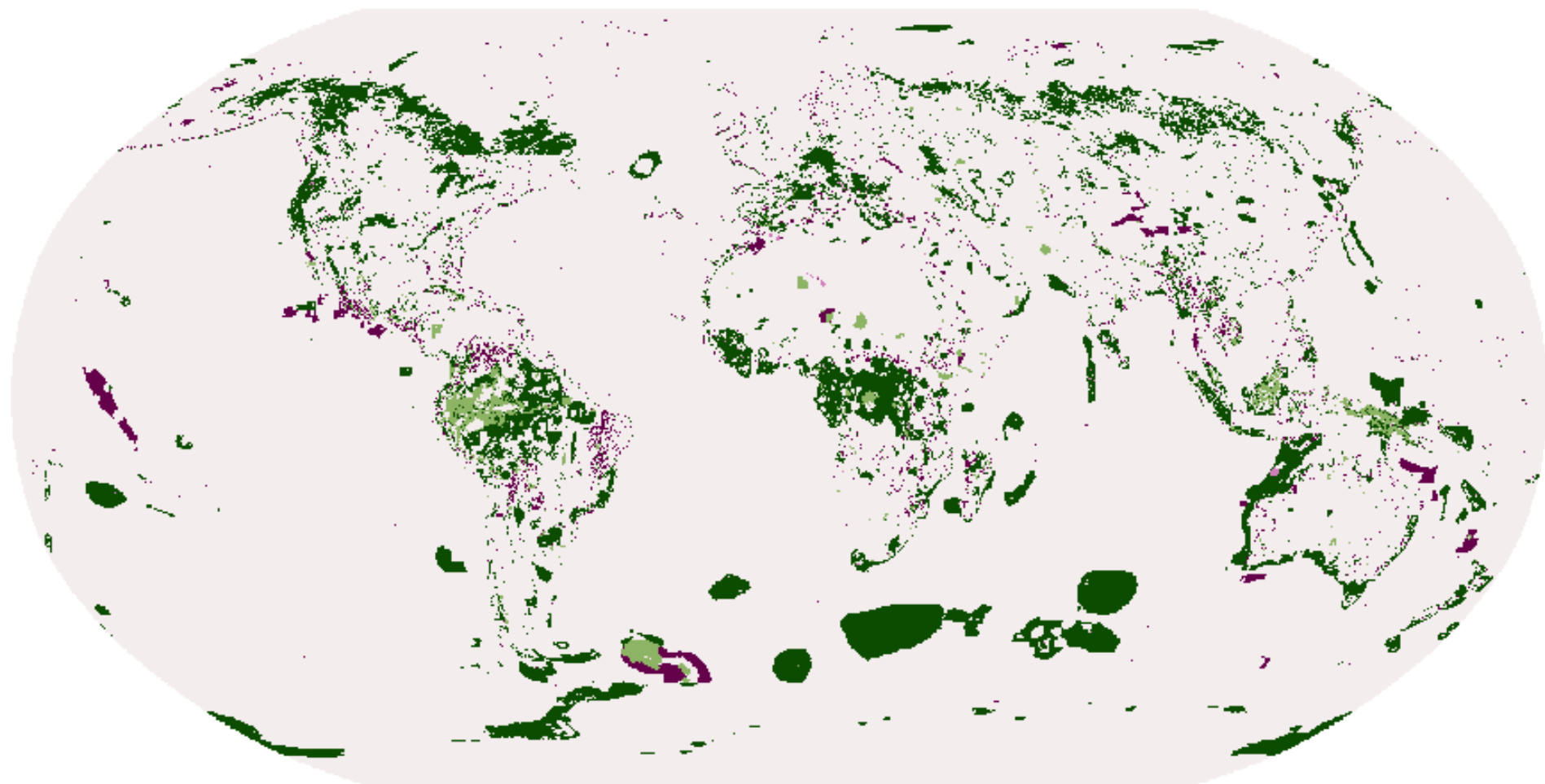
UNEP-WCMC (2017)

VERSION 2.0

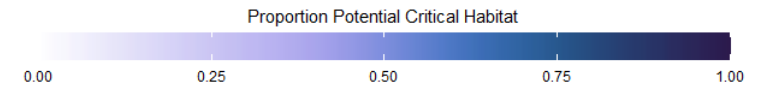
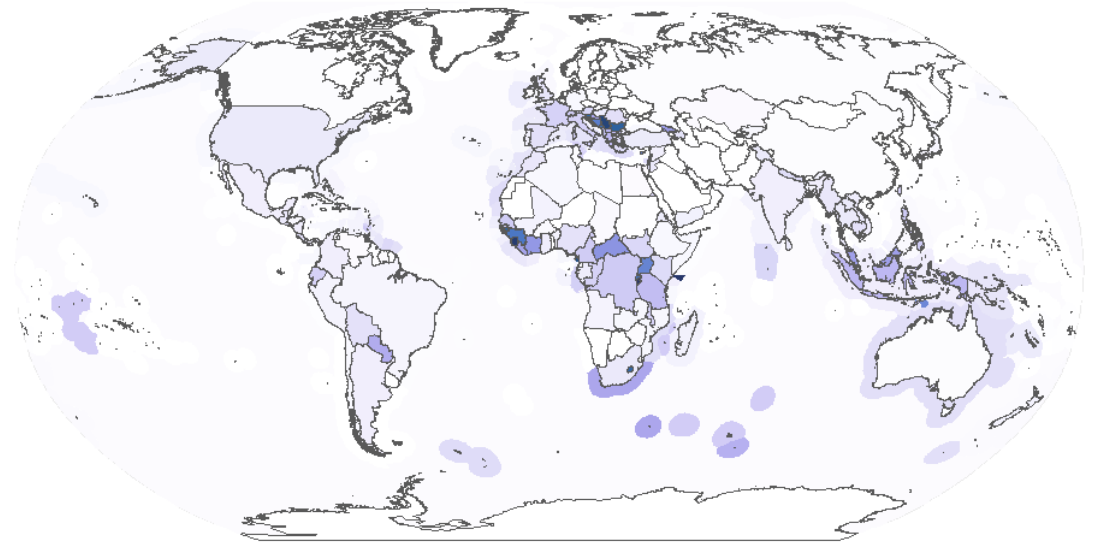
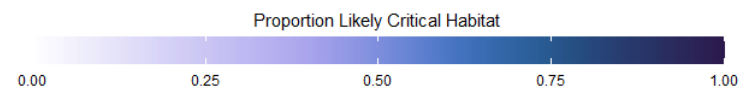
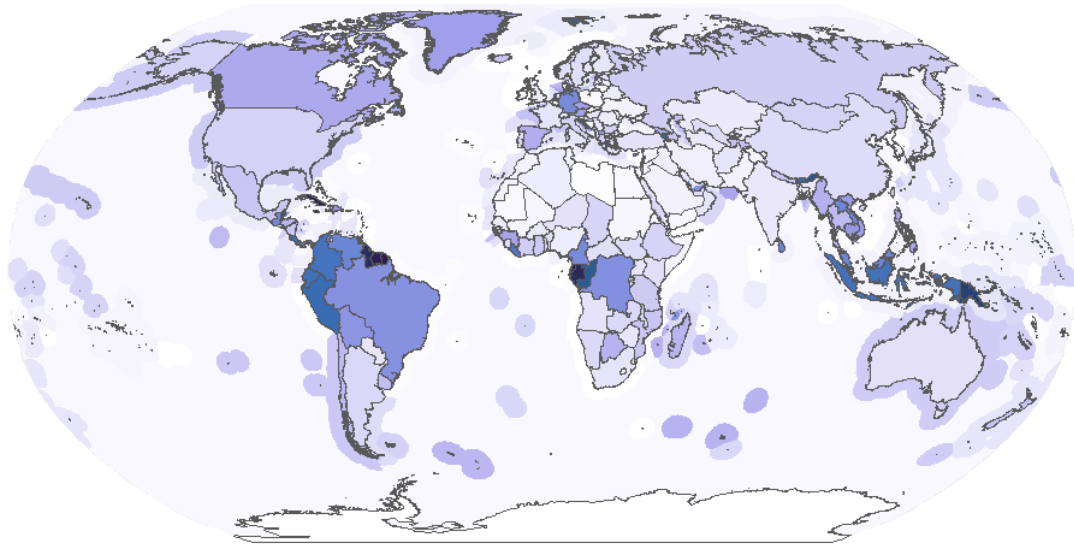


■ LIKELY ■ POTENTIAL ■ UNCLASSIFIED

UNEP-WCMC (2023)

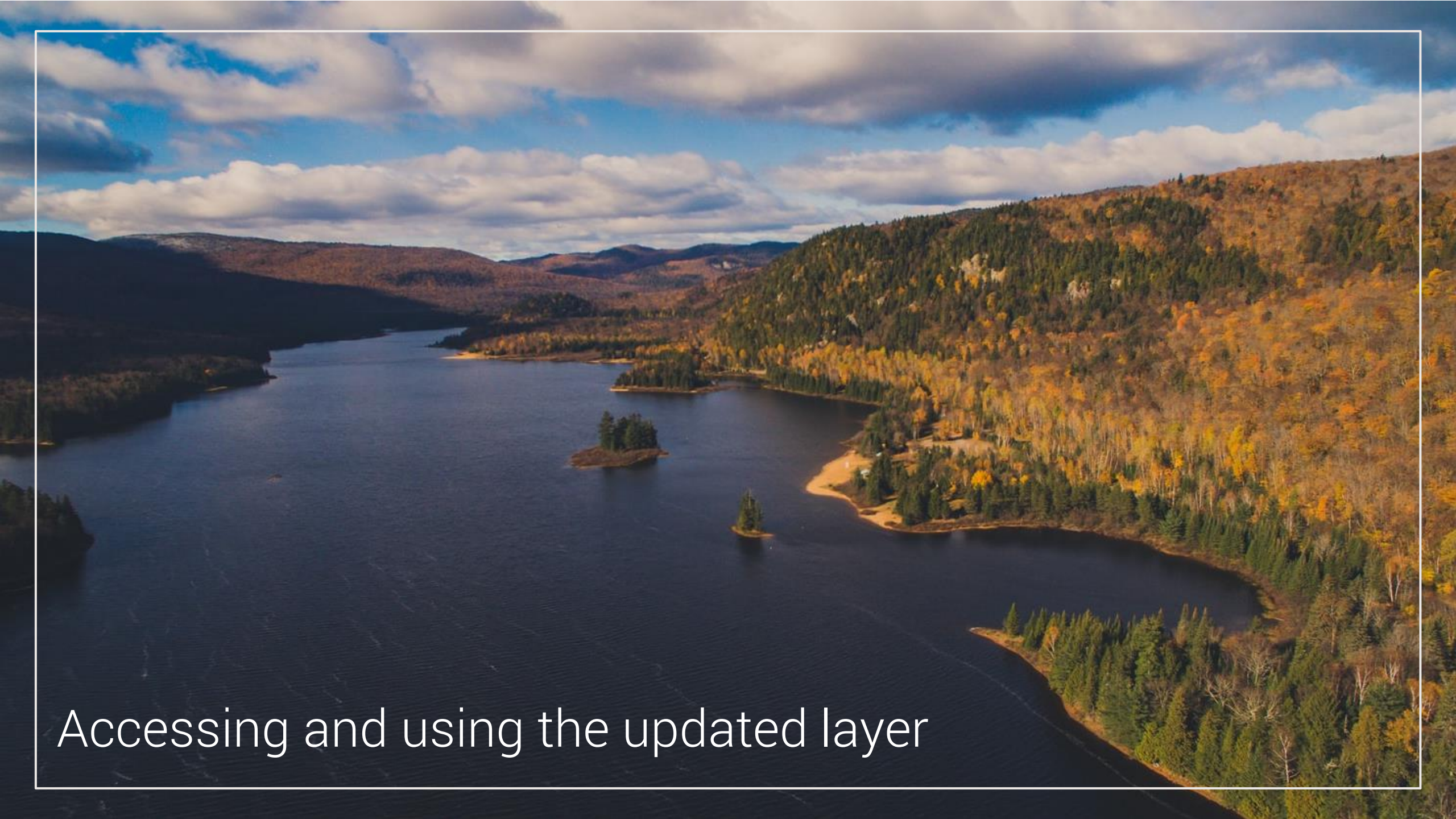


- Addition
- Upgrade
- No change
- Downgrade
- Removal





Demo



Accessing and using the updated layer

INTENDED USE

- Version 2.0 will be made available first to Proteus Partners for testing before wider dissemination.
- **Intended use:**
 - Initial desk-based screening for the potential presence of Critical Habitat.
 - Used as part or precursor to more detailed analysis including site-based surveys.
 - May be useful to inform internal decision making.
 - Meets many TNFD criteria.



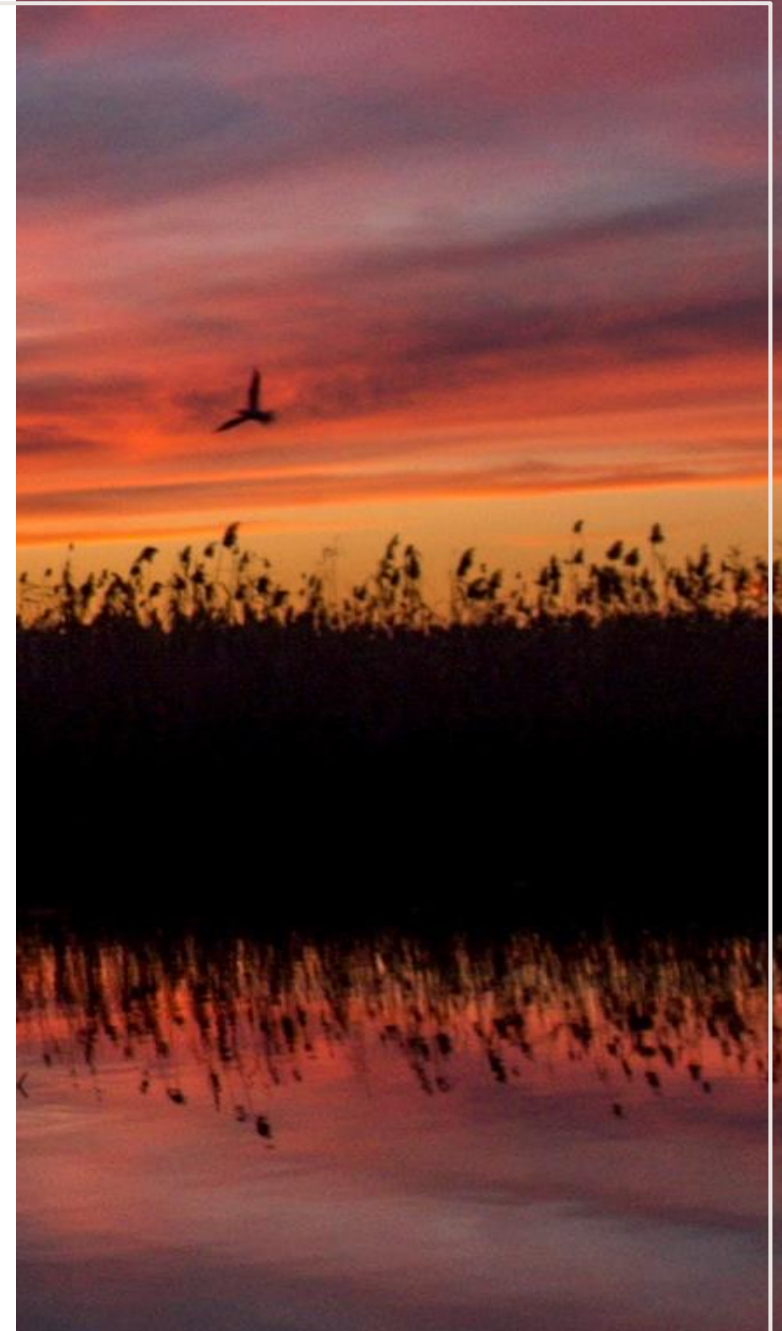
DATA LIMITATIONS

All the datasets are of global scale with potential limitations such as around data completeness and resolution.

The layer, and underlying datasets, may contain both errors of commission and omission.

Areas classified as Likely and Potential Critical Habitat require on-the-ground validation.

Areas that are Unclassified may contain Critical Habitat.



USE ALONGSIDE OTHER DATASETS

The following layers can be used together when carrying out screening based on IFC PS6:

- Updated Critical Habitat screening layer
- Natural and Modified Habitat screening layer
- WDPA (filtered for World Heritage sites) and KBAs dataset (filtered for Alliance for Zero Extinction sites), to identify sites that are not suitable for financing by the IFC and Equator Principles FIs





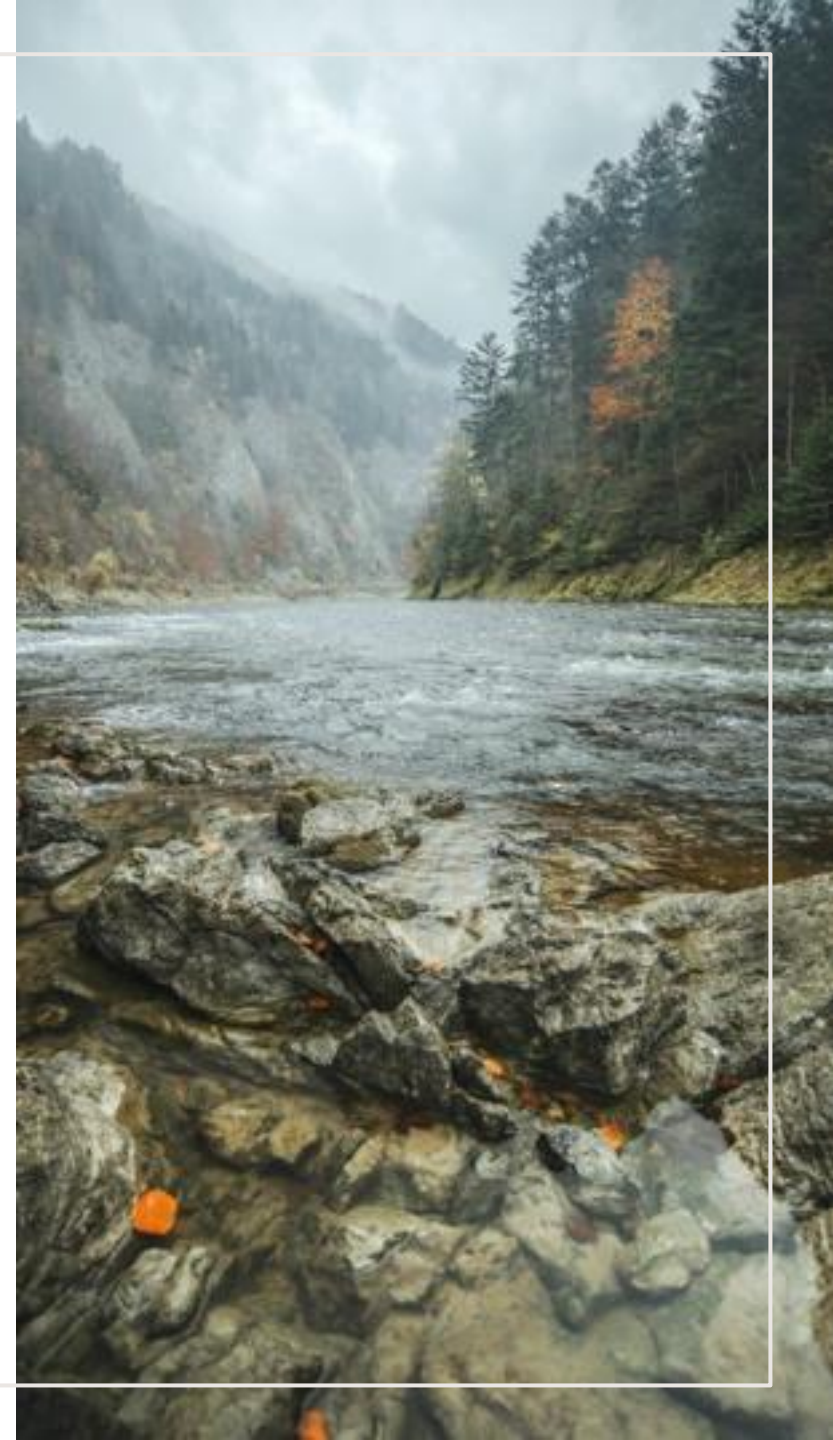
Thank you

FEEDBACK AND SUPPORT

Provide feedback on experiences using the layer, including suggesting improvements for future updates.

Reach out if any support is required in using and interpreting the layer.

Feedback and requests for support can be sent to proteus@unep-wcmc.org.



UN 
**environment
programme**

WCMC