

# Proteus Quarterly Update

April to June 2023

UN  WCMC  
environment  
programme

| proteus

# Contents

- 1. Highlights**
- 2. Protected Areas**
- 3. Marine**
- 4. Resources**
- 5. Publications**
- 6. Events**



# 1.1 Highlights

## Proteus Annual Meeting

Partners gathered in Cambridge this June to share updates and innovations in business action on nature.

Over the course of two days, 80 participants, including partners, observer companies and conservation organisations, shared insights on:

- Progress and priorities for delivering against the Proteus Strategy for 2021-2025.
- Practical case studies around site-based biodiversity measurement and accounting and identifying opportunities for business action.
- Business transitions and contributions towards global policy and nature-positive.
- Business actions on value chain impacts and dependencies on nature.

Thank you to everyone who participated and a special thanks to our 8 partner presenters! Recordings and presentations will be made available on the [Proteus website here](#) in due course.



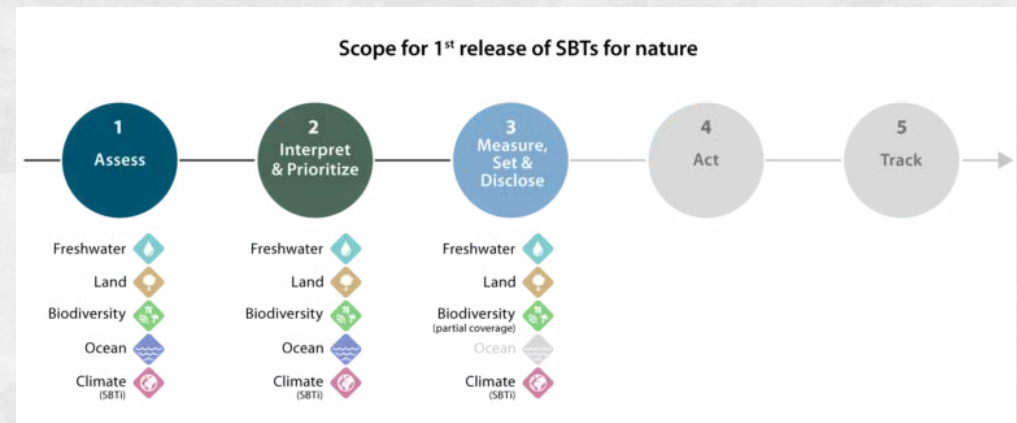
Point of Contact  
Aime Rankin

# 1.2 Highlights

## SBTN – First Science-based Targets for Nature

Science Based Targets Network (SBTN), in collaboration with over 80 leading organisations including UNEP-WCMC, has launched the first version of science based targets for nature.

- This first release provides guidance for companies to assess and prioritize their environmental impacts, and to prepare to set targets across freshwater and land alongside climate targets through the Science Based Targets initiative (SBTi).
- The new science-based targets for nature provide a key mechanism for companies to operationalise Target 15 of the Kunming-Montreal Global Biodiversity Framework.
- Later releases, aimed for 2024, will further integrate biodiversity targets and issue guidance on the final steps of SBTN's methodology, namely target implementation and tracking progress (Act and Track).

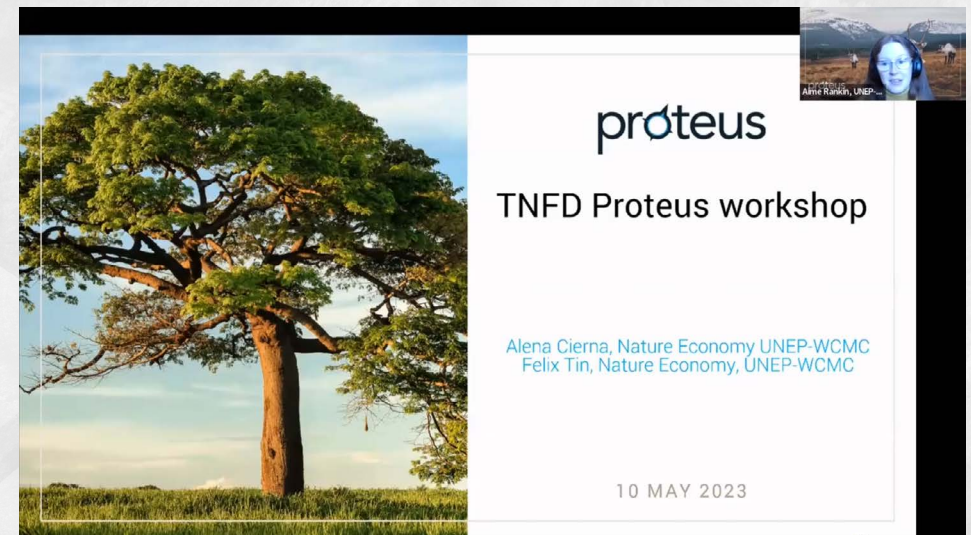



# 1.3 Highlights

## TNFD Workshop for Proteus Partners

On 10th May 2023, the Proteus Partnership hosted a TNFD workshop that provided a short overview of TNFD beta framework v0.4 and an opportunity for partners to exchange feedback on the latest updates.

- The online workshop covered:
  - General updates and additions included in the v0.4 TNFD release.
  - TNFD's approach to metrics, including the core global disclosure metrics proposed in v0.4.
- The key points raised during the discussion were summarised in a report shared with the TNFD to support the finalisation of the framework by September 2023.



 Access the [final report, slides and recording](#)  
proteus



Point of Contact  
Alena Cierna

# 1.4 Highlights

## Guidance: Towards a robust approach for measuring business dependencies on nature

UNEP-WCMC and UNEP Finance Initiative (UNEP FI) launched a new guidance on how businesses and financial institutions can comprehensively measure their dependencies on nature.

- The guidance summarises key insights on measurement of business dependencies, including:
  - The level of dependency-related risk is determined also by interconnections between business, nature and local communities.
  - Different types of nature-related dependencies are associated with different pathways to risks and opportunities.
  - Dependency-related risk can rapidly increase as the condition of ecosystem assets reaches tipping points or thresholds.
- It invites businesses to ensure that their measurement of dependencies on nature covers all the components needed for a robust assessment: reliance, impact drivers, external drivers of change, state of nature and the ecosystem service itself.
- Proteus Partners can use it to strengthen their assessment and disclosure practices.




# 1.5 Highlights

## IPBES Business & Biodiversity Assessment & Technical Support Unit

The methodological assessment of the impact and dependence of business on biodiversity and nature's contributions to people aims to categorise the dependencies and impacts of business and financial institutions on biodiversity and nature's contributions to people, assess methods for measuring these, and suggest options for action.

- The assessment will be global in scope and address issues related to all sectors and business types. Regional adaptations and applications, including past and present examples, will also be considered across terrestrial, freshwater, and marine ecosystems.
- It will be conducted over the next two years by a panel of 73 international experts, guided by the co-chairs and supported by a Technical Support Unit, which will be co-hosted by UNEP-WCMC (UK) and the Humboldt Institute (Colombia). It is expected that the final assessment will be considered by IPBES Members at the twelfth IPBES Plenary session in 2025.
- First author meeting will take place in Bogotá, Colombia, 18 - 22 September 2023
- First external review will be open between June- August 2024. Partners can become a reviewer of the first draft of the chapters and summary for policymakers through the IPBES website, once the period starts.

 Access the [more information about this assessment](#)



Point of Contact  
Olena Tarasova-Krasiieva

# 2.1 Protected Areas

## World Database on Protected Areas (WDPA)

Several data updates have been made to the WDPA, including:

- **Angola:** A complete update of protected areas data, including the addition of records for four new terrestrial sites, covering approximately 14,408 km<sup>2</sup>.
- **Oman:** A complete update including records for two new protected areas: Khor Kharfout Archaeological Reserve in Dhofar Governorate and National Natural Park Reserve in Musandam Governorate.
- **Lao People's Democratic Republic:** Update of protected areas data for Lao PDR including the addition of records for Yodnammo-Phousamsoum National Park and three ASEAN Heritage Parks (2 proposed, 1 designated).

An overall decrease in records was observed from April to June 2023 due to the removal of erroneous data reported to the WDPA.

Number of countries updated	7
Net increase in records	-119
Percent of records updated or validated	0.1%



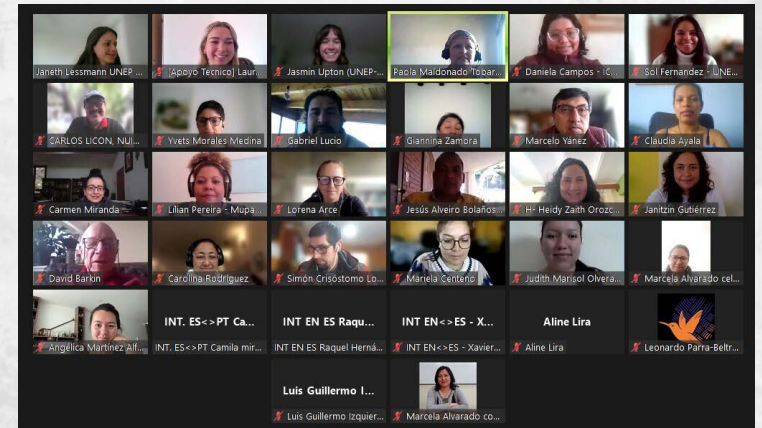
Point of Contact  
Emily Howland

# 2.2 Protected Areas

## Protected Planet Initiative

### Meetings and events

- A workshop on Target 3 of the Kunming-Montreal Global Biodiversity Framework (GBF) was convened by the CBD Secretariat and IUCN's World Commission on Protected Areas (WCPA), and hosted by UNEP-WCMC. Parties discussed areas of support most needed and sought to identify where a Target 3 Partnership could add most value to the existing landscape of support efforts including support to Targets 1 and 2.
- The Protected Planet team have organised and attended several other events in Q2 2023 as part of efforts to maintain and strengthen the quality of data available through the WDPA. These include the IUCN WCPA Steering Committee Meeting, Land and Carbon Lab Summit, a national dialogue on Target 3 in the Democratic Republic of Congo, and a training session for the ICCA Latin American Network to map the territories and areas they conserve.



Point of Contact  
Emily Howland

# 3.1 Marine

## Ocean+

### Global seagrass mapping

- In collaboration with the University of Queensland and Smithsonian, a concept note has been finalised to present to potential funders. This proposal seeks to gain funding for a new global seagrass map that will allow the estimation of the value of fisheries, tourism, carbon and other benefits, as well as empowering decision makers.

### International marine networks

- The role of Ocean+ has been strengthened through attendance at the Global Coral Reef Monitoring Network and International Coral Reef Initiative general meetings. The UNEP-WCMC coral reef map was also used to underpin the targets set under the Coral Reef Breakthrough initiative.
- UNEP-WCMC has strengthened their involvement in the Convention for Migratory Species (CMS) by now being confirmed as an Observer in the Energy Task Force. This role should build upon our network within industry and allow us to extend the reach of our biodiversity work within the energy sector.



Point of Contact  
Rowana Walton

# 3.2 Marine

## Spatial planning for marine renewable development

- This quarter, the project exploring marine spatial planning considerations for renewable developments was kicked off.
- A comprehensive literature review has been undertaken of the impacts to marine migratory species from offshore wind energy developments.
- The results of this review will now be analysed and presented next quarter.



Point of Contact  
Rowana Walton

# 4.1 Resources

## Data Forum – Company approaches to site-based biodiversity measurement and accounting, and identifying opportunities for business action.

During the Proteus Annual meeting, 6 partners shared case studies on practical implementation of site-based measurement and accounting approaches, as well as approaches to identify new opportunities in the wider landscape. During the discussion, partners shared their lessons learned and highlighted emerging topics, trends and challenges.

### Topics included:

- Corporate tools and approaches to site-based biodiversity measurement, including natural capital accounting, and managing risks across diverse portfolios.
- Identifying opportunities in the landscape through exploring cumulative impacts and biodiversity credits, as well as increasing transparency through setting disclosure targets.
- Recordings and presentations will be made available on the [Proteus website here](#) in due course.



Point of Contact  
Aime Rankin

# 4.2 Resources

## Data Forum – Status and trends in data sources and digital technologies to support action on nature and climate

Spatial intelligence is needed to help prioritise and track location-specific actions for nature and climate. This data forum explored how the latest trends in technology are transforming how and the scale at which businesses can collect data on biodiversity

### The webinar covered:

- The growth of spatial intelligence and why it's needed to drive action on nature.
- Trends in on-the-ground measurement and remote sensing tech (including eDNA), as well as updates on accessibility and sharing.
- How innovative tech can feed into the mitigation hierarchy, supporting progress towards business commitments on nature.
- Case studies on how eDNA can be used to monitor biodiversity, track progress towards NPI and alignment with TNFD.



 Access the [recording and slides](#)

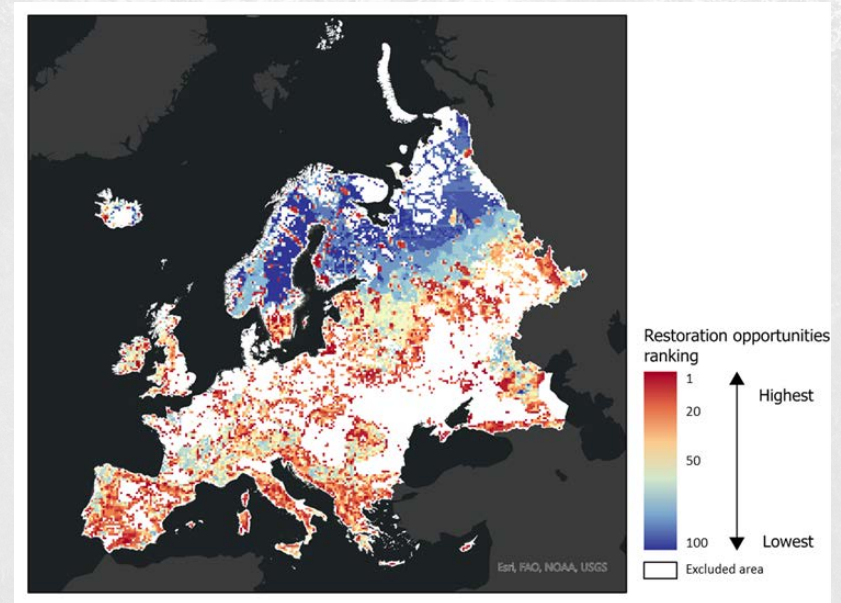


# 4.3 Resources

## Technical Brief – Screening for restoration opportunities

This technical brief provides an overview of the newly developed Restoration Opportunities layer and how it can be used to screen for opportunities to deliver multiple benefits through ecosystem restoration in Europe.

- Based on Proteus Partner feedback, we finalized the restoration opportunities layer for Europe and developed this technical brief to accompany it.
- The technical brief details the methodology used to develop the layer as well as guidance on its interpretation and limitations.
- The layer is intended to be used alongside other data as part of screening and scoping exercises and should be validated on-ground as appropriate.
- We have also started exploring creating a similar layer for North America in 2023 and are working to refine the methodology that was developed last year.



*Restoration opportunities layer for Europe.  
(March 2023).*

 Access the [technical brief](#) and [spatial layer](#)

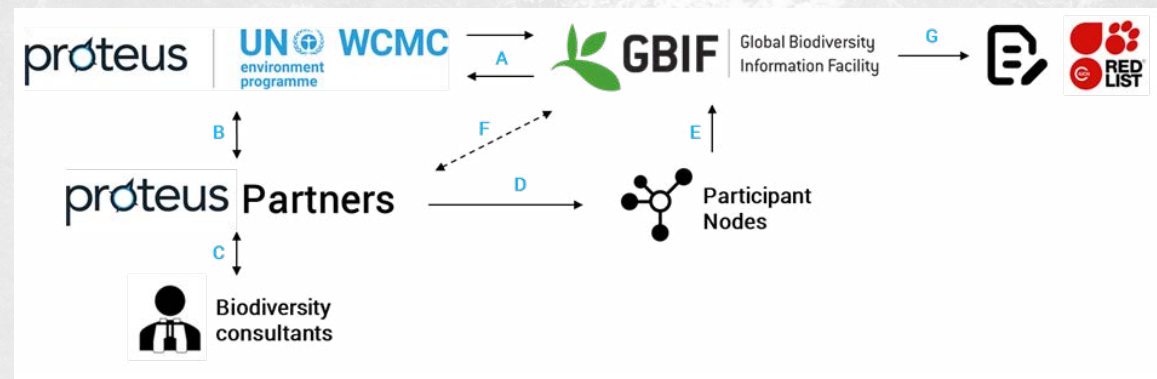


# 4.4 Resources

## Technical Brief – Sharing biodiversity data through GBIF

This technical brief explains why Proteus Partners should share biodiversity data through the Global Biodiversity Information Facility (GBIF) and then provides step-by-step guidance on how to do so.

- All Proteus Partners are encouraged to explore sharing data through GBIF.
- In Q3 and Q4, the Proteus Partnership is looking to support companies to pilot the data sharing process.
- If you would like to discuss getting started with data sharing, please get in touch.



*Pathway for Proteus Partners to share data through the Global Biodiversity Information Facility (GBIF) and contribute towards improving global biodiversity datasets.*

 Access the [technical brief](#)

proteus



Point of Contact  
Alex Ross

# 5 Publications

- **Towards a robust measurement of business dependencies on nature.**  
*UN Environment Programme (2023) – [Available here](#)*
- **A global assessment of the prevalence of current and potential future infrastructure in Key Biodiversity Areas.**  
*Simkins et al. (2023) – [Available here](#)*
- **Technical Guidance: Step 1: Assess.**  
*Science Based Targets Network (2023) – [Available here](#)*
- **Technical Guidance: Step 2: Interpret & Prioritize (Version 1).**  
*Science Based Targets Network (2023) – [Available here](#)*
- **Technical Guidance: Step 3 Freshwater: Measure, Set & Disclose.**  
*Science Based Targets Network (2023) – [Available here](#)*
- **Technical Guidance: Step 3: Measure, Set, Disclose: LAND (Version 0.3)**  
*Science Based Targets Network (2023) – [Available here](#)*
- **Biodiversity short paper: Biodiversity in the first release of SBTs for nature and an approach for future methods.**  
*Science Based Targets Network (2023) – [Available here](#)*
- **Mining and Metals: The opportunity to contribute to the Global Biodiversity Framework.**  
*International Council on Mining and Metals (2023) – [Available here](#)*

# 6 Events

## Proteus Partner Events

- Q3 2023** Horizon Scan Webinar on Align Supply Chain guidance
- Q3 2023** Data Forum on Nature's Contributions to People
- Q4 2023** Horizon Scan Webinar on the monitoring framework for the Kunming-Montreal Global Biodiversity Framework
- Q4 2023** Data Forum on data sharing.
- Q4 2023** Data Forum on Updated Critical Habitat Layer

## External Events

- 28 Aug 2023** 10<sup>th</sup> session of the Plenary of the Intergovernmental Science-Policy Platform on Biodiversity and Ecosystem Services (IPBES 10)
- 7 - 8 Sept 2023** Global Intergovernmental Meeting on Minerals and Metals
- 10 - 25 Sept 2023** Extended 45<sup>th</sup> session of the World Heritage Committee
- 30 Nov - 12 Dec 2023** 28<sup>th</sup> session of the Conference of the Parties (COP 28) to the UNFCCC

proteus



We are now on **LinkedIn**

Join and stay connected with us on  
the [Proteus Partnership](#)