



proteus

## Biodiversity fundamentals and Proteus training

Stacey Baggaley, Senior Programme Officer, UNEP-WCMC  
Aime Rankin, Associate Programme Officer, UNEP-WCMC

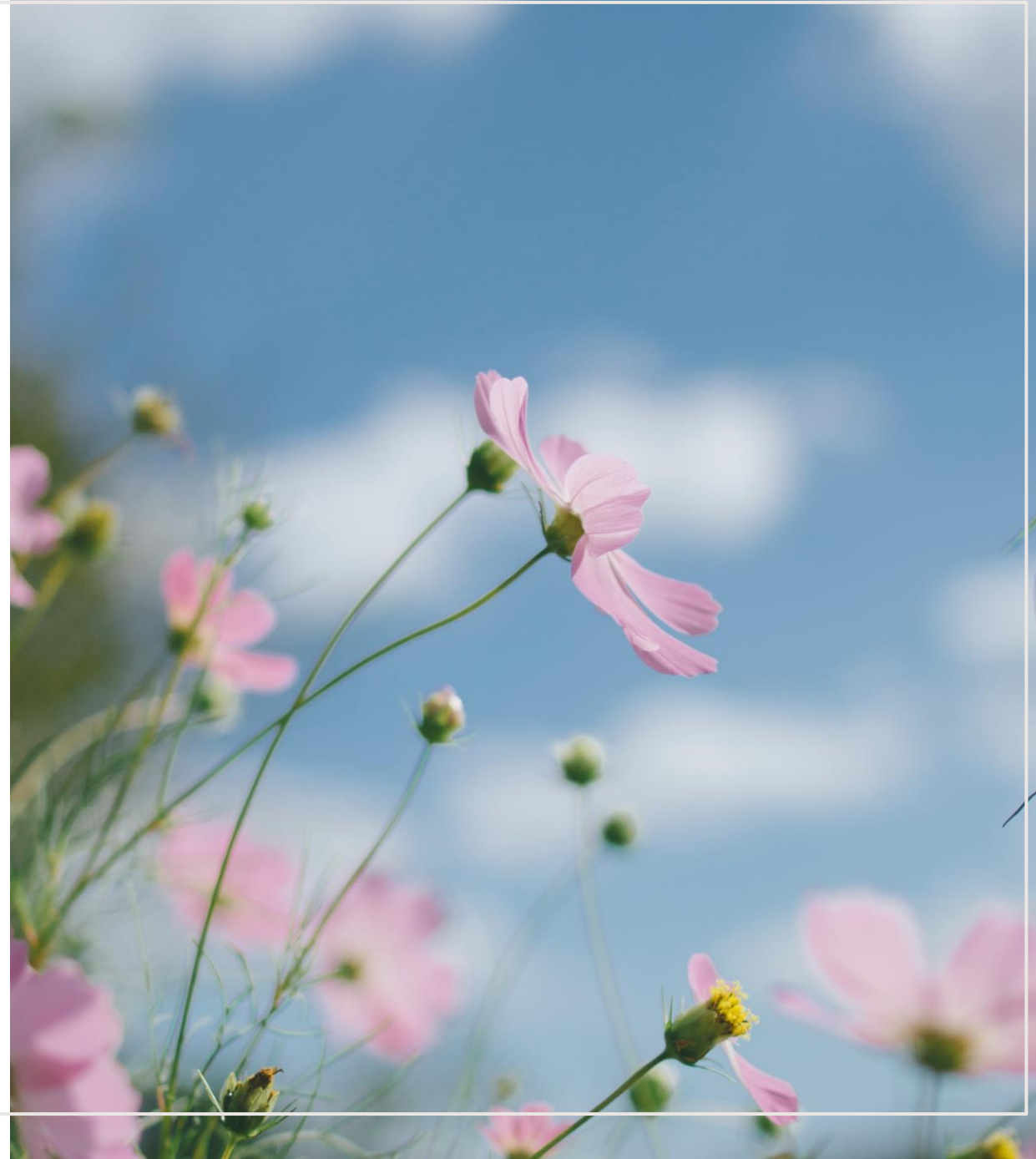
Engie

28/02/2023

# TRAINING OBJECTIVES

At the end of the training you will be familiar with:

- Drivers for improved biodiversity management
- The Proteus Partnership, its objectives and what resources it makes available to you
- How to access Proteus support
- Biodiversity data, namely those available through Proteus, how these are identified and how they can be used to deliver positive biodiversity outcomes



# AGENDA

- Setting the scene: drivers for biodiversity management
- Overview of the Proteus Partnership and objectives
- Resources available through Proteus (Proteus website, Ocean+, Ocean Data Viewer, IBAT Biodiversity A-Z)
- Introduction to IBAT

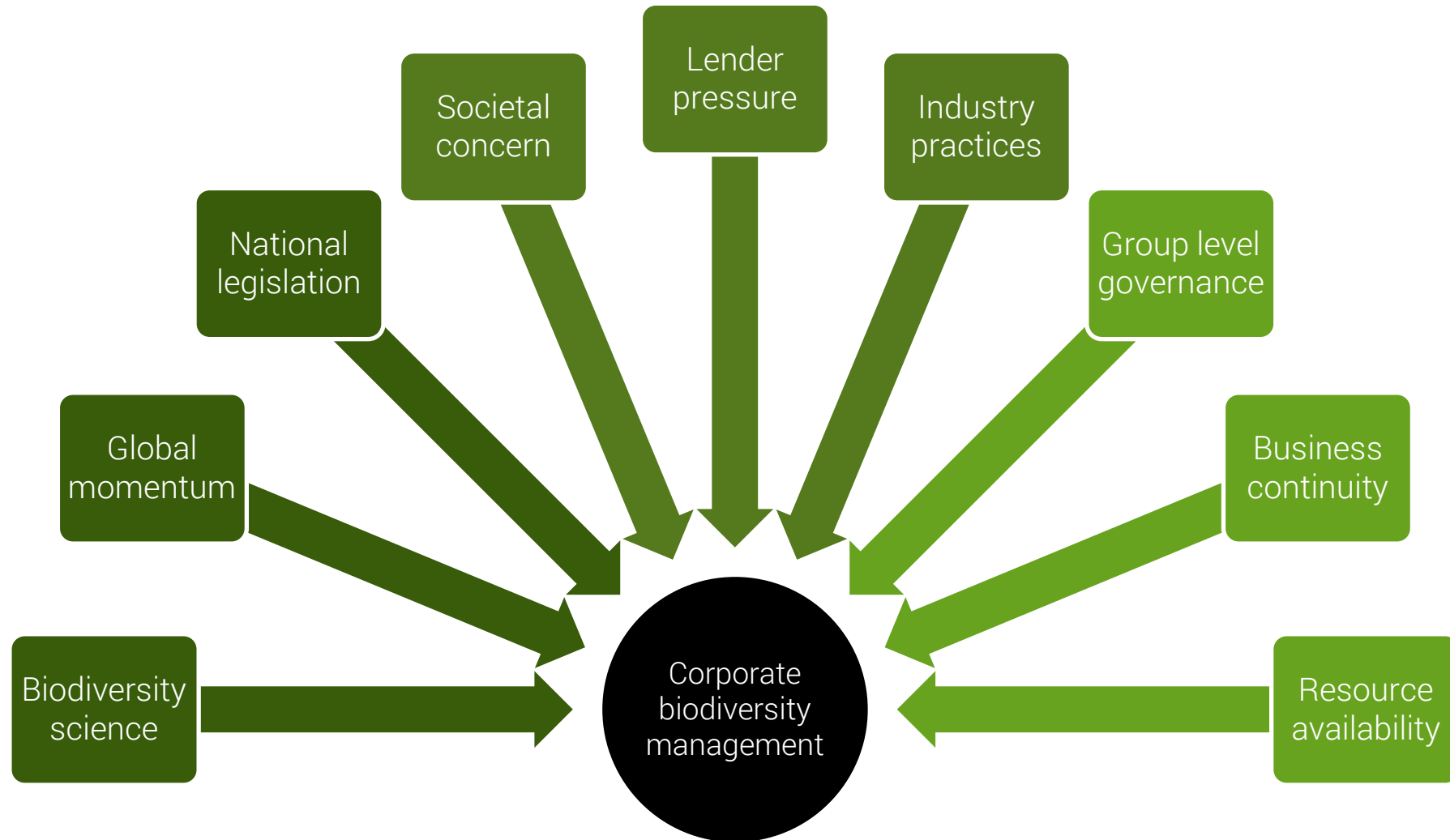




# Setting the scene

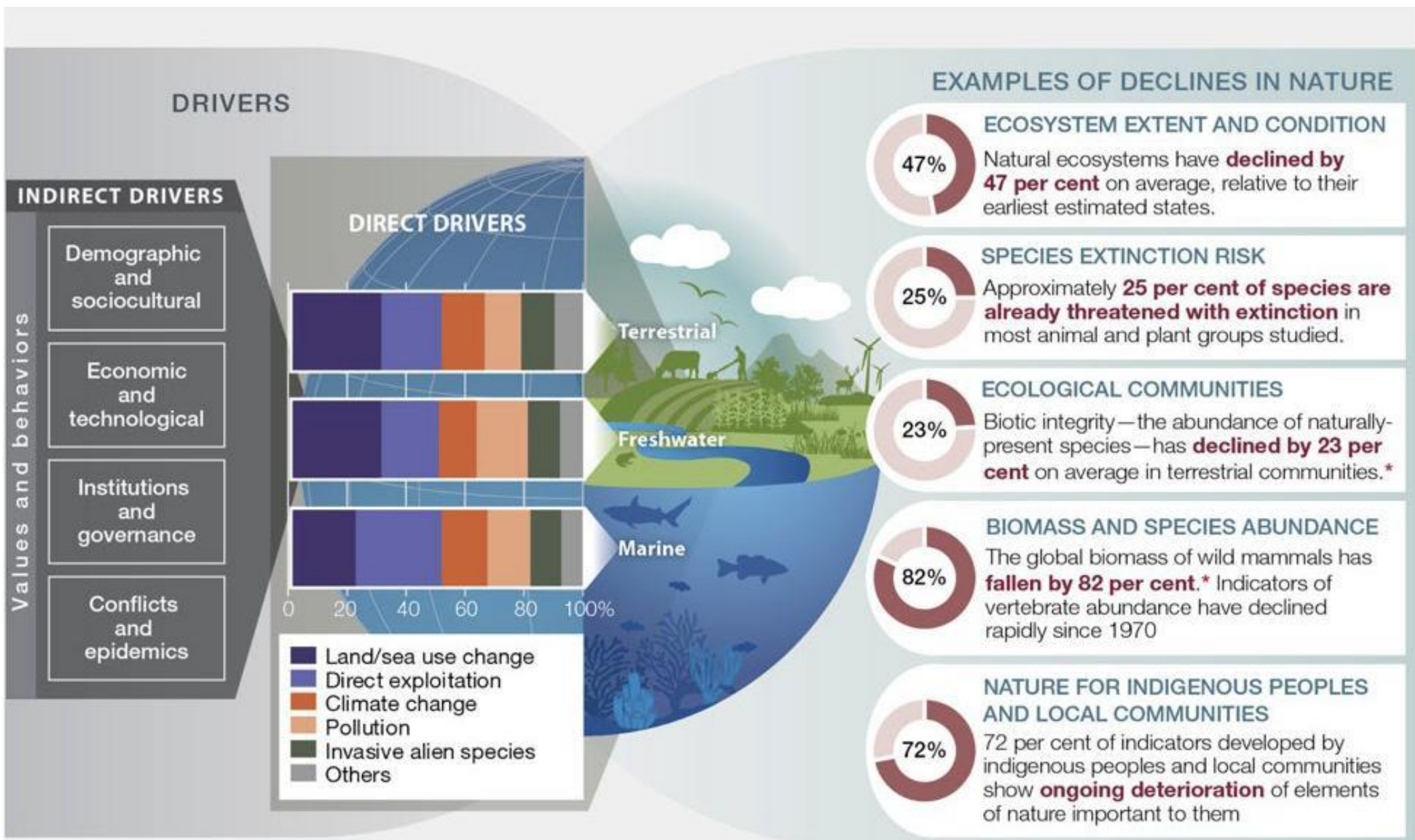
Stacey Baggaley, Senior Programme Officer, UNEP-WCMC

# PRESSURE FOR BIODIVERSITY MANAGEMENT

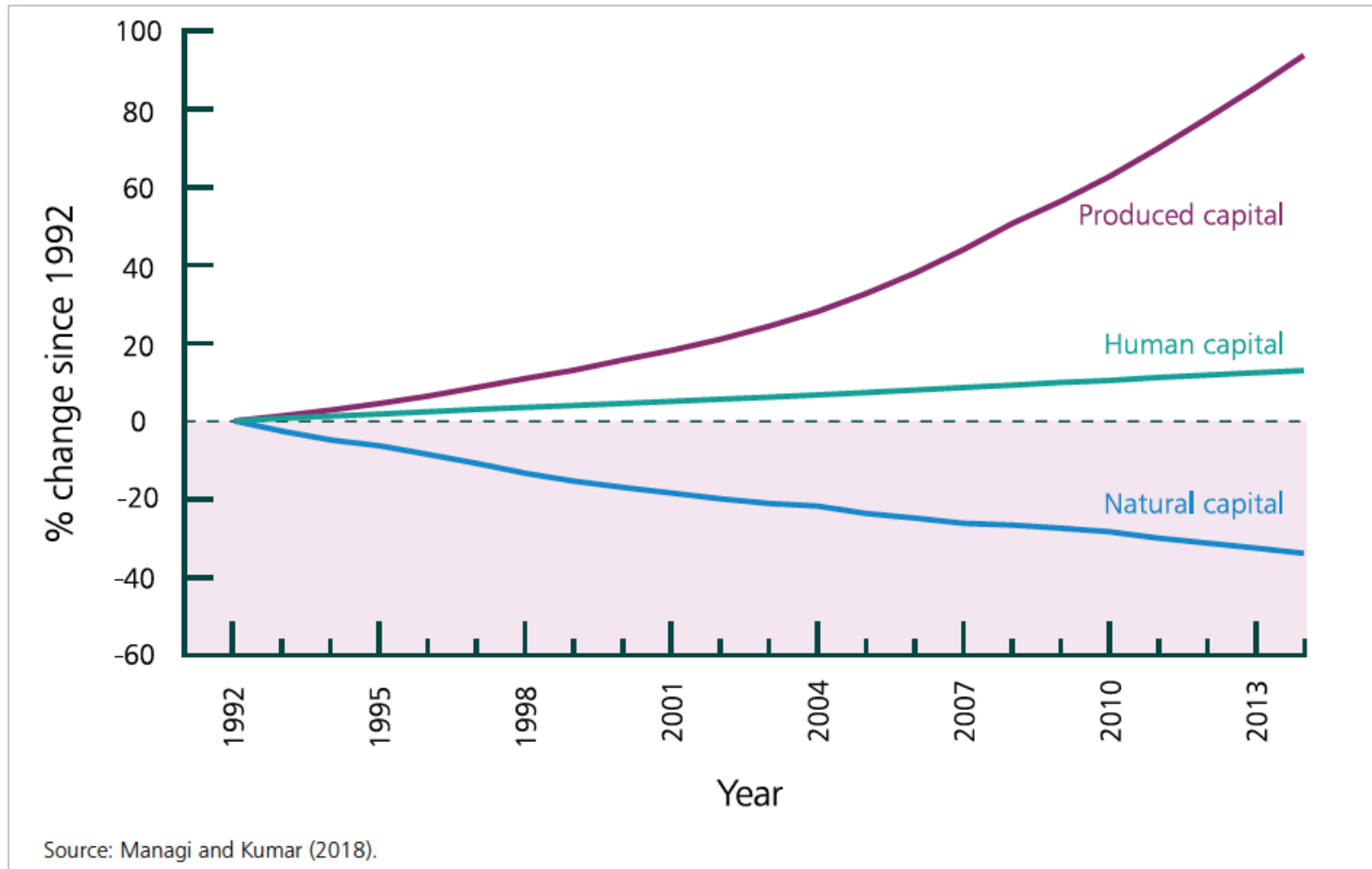


External factors

Internal pressures



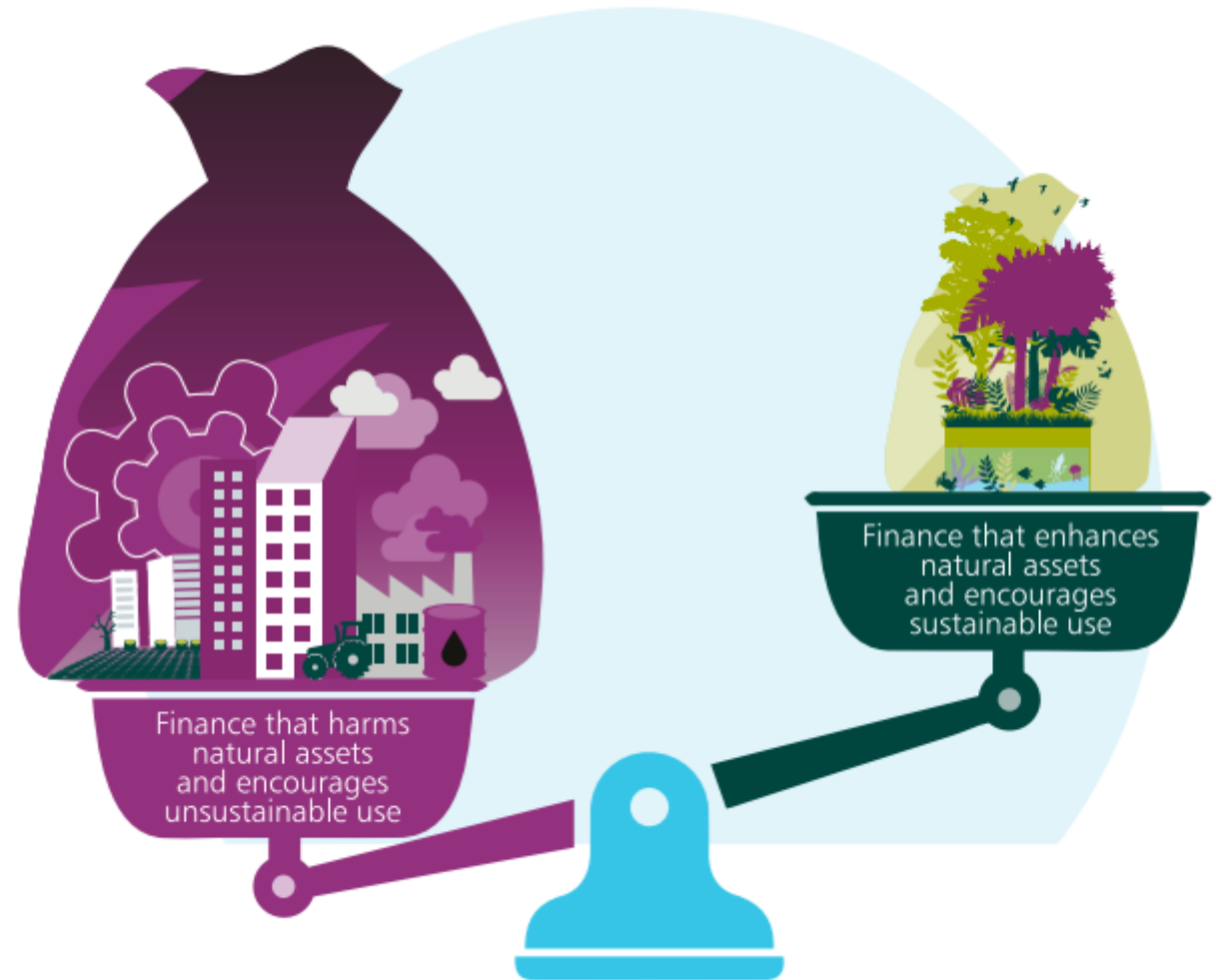
# DASGUPTA REVIEW: DECLINE OF NATURAL CAPITAL



# SHIFTING FINANCIAL FLOWS

The cost of stabilising biodiversity intactness now by 2050 is approximately US\$7 trillion dollars (~8% of global GDP).

But, delaying action by 10 years would more than double the cost to approximately US\$15 trillion (~17% of global GDP)



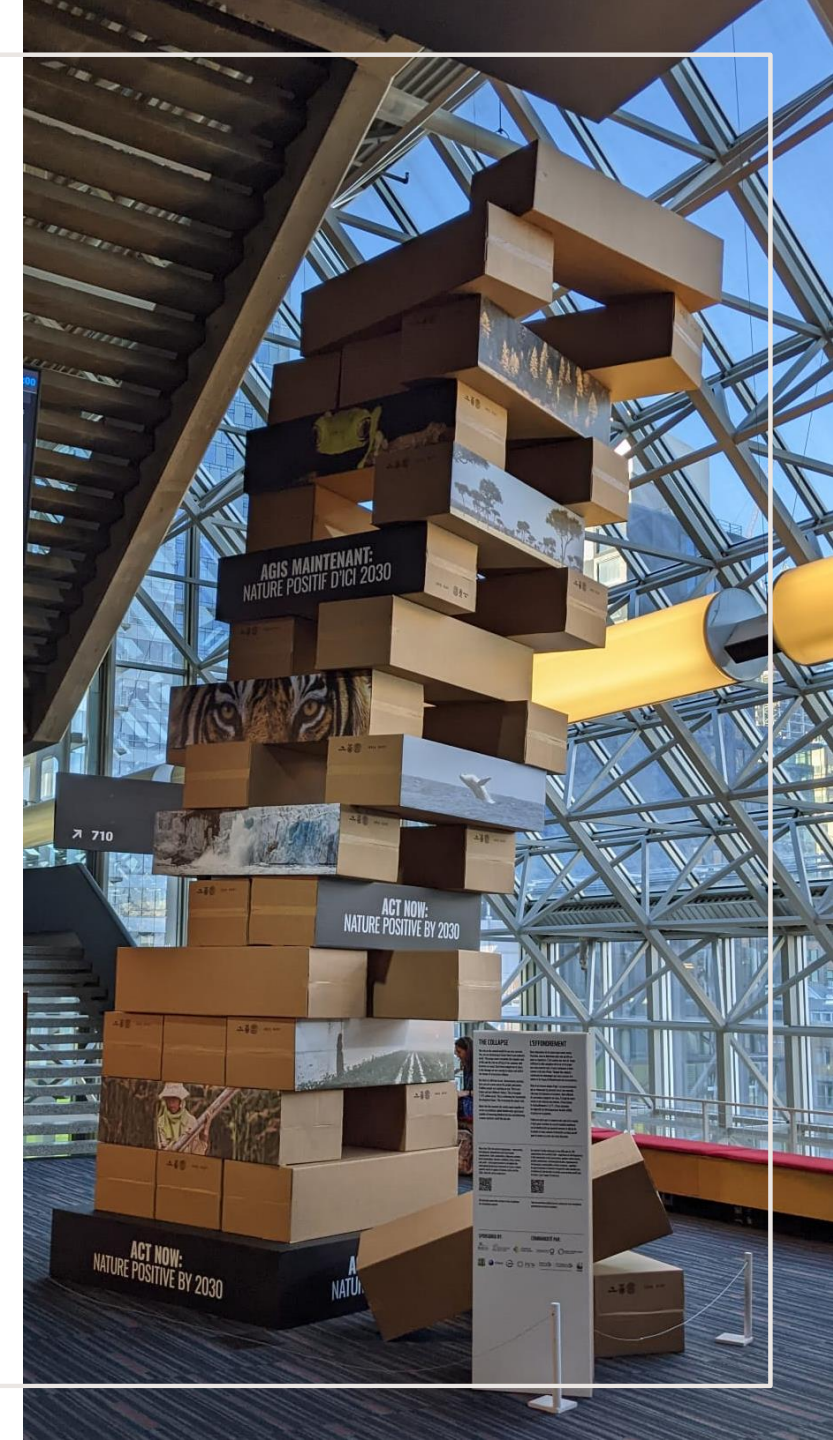
# KUNMING-MONTREAL BIODIVERSITY PACKAGE

- Kunming-Montreal biodiversity package includes:
  - Global Biodiversity Framework
  - Monitoring framework for the Kunming-Montreal global biodiversity framework
  - Mechanisms for planning, monitoring, reporting & review
  - Resource mobilisation
- 2030 mission: To take urgent action to halt and reverse biodiversity loss to put nature on a path to recovery for the benefit of people and planet
- All of the Global Biodiversity Framework goals and targets are relevant to business



# EMERGING CONSIDERATIONS AND IMPLICATIONS FOR BUSINESS

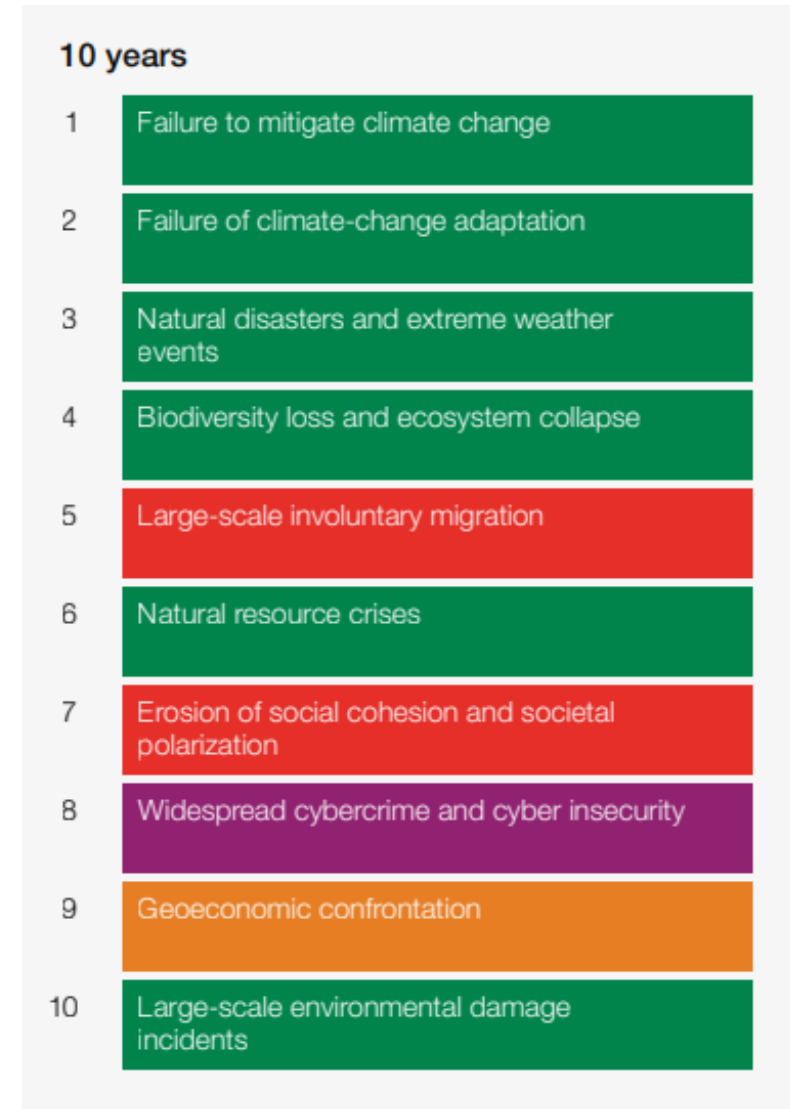
- Reducing pressures and drivers for change to halt and reverse biodiversity loss
- Opportunities to align business strategies and commitments with global goals
- Mechanisms and data for assessing materiality and supporting disclosure across operations and supply chains
- Emerging regulatory requirements as part of revised ESIA's or permitting processes



# BIODIVERSITY LOSS IS INCREASINGLY SEEN AS A MATERIAL BUSINESS RISK

- Almost all businesses impact and/or depend on biodiversity, either directly or through their supply chains
- Over the past years the risks from biodiversity loss have gained increasing recognition

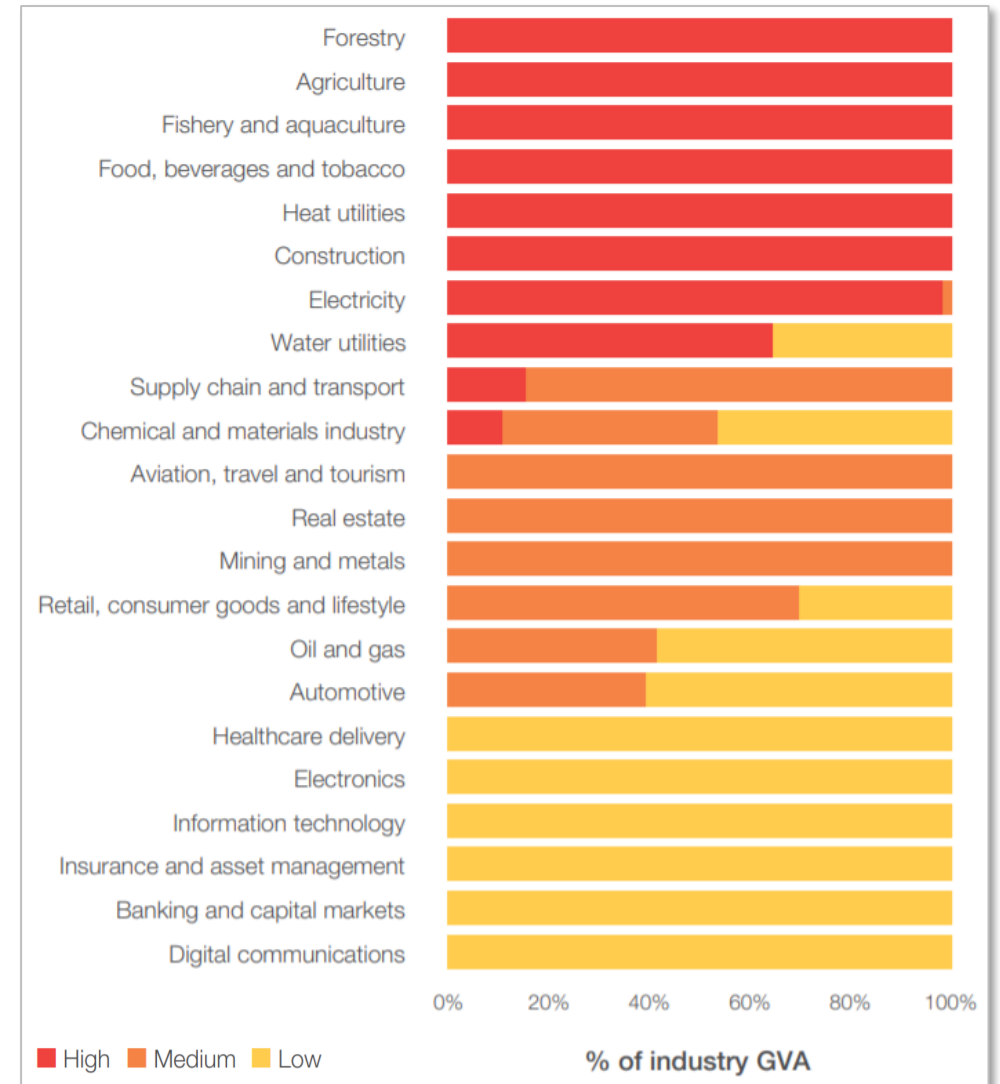
The Global Risk Landscape 2023: risks ranked by severity



# THIS TRANSLATES TO POTENTIAL DISRUPTION FOR BUSINESSES

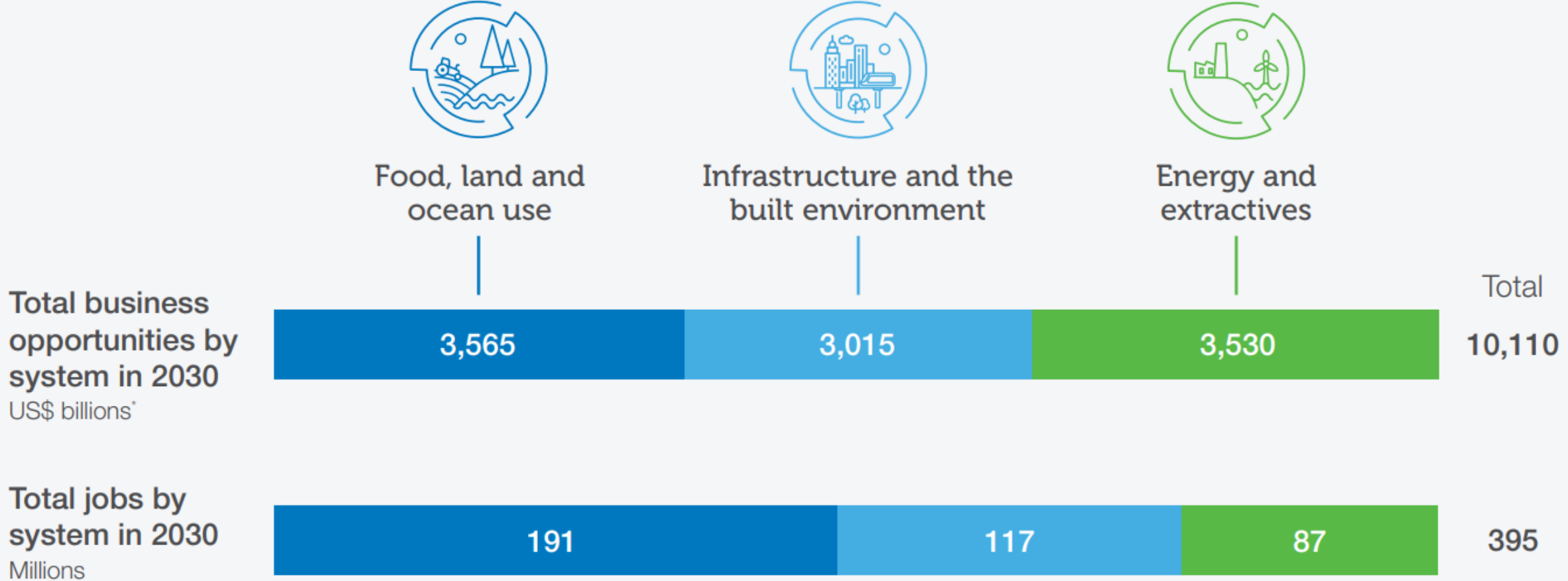
- Globally, \$44 Trillion of economic value generation are at risk from nature loss (50% of Global GDP)
- Apart from direct dependencies, businesses still have “hidden dependencies” through their supply chains

Percentage of direct gross value added (GVA) with high, medium, low nature dependency, by industry



Source: World Economic Forum (2020)

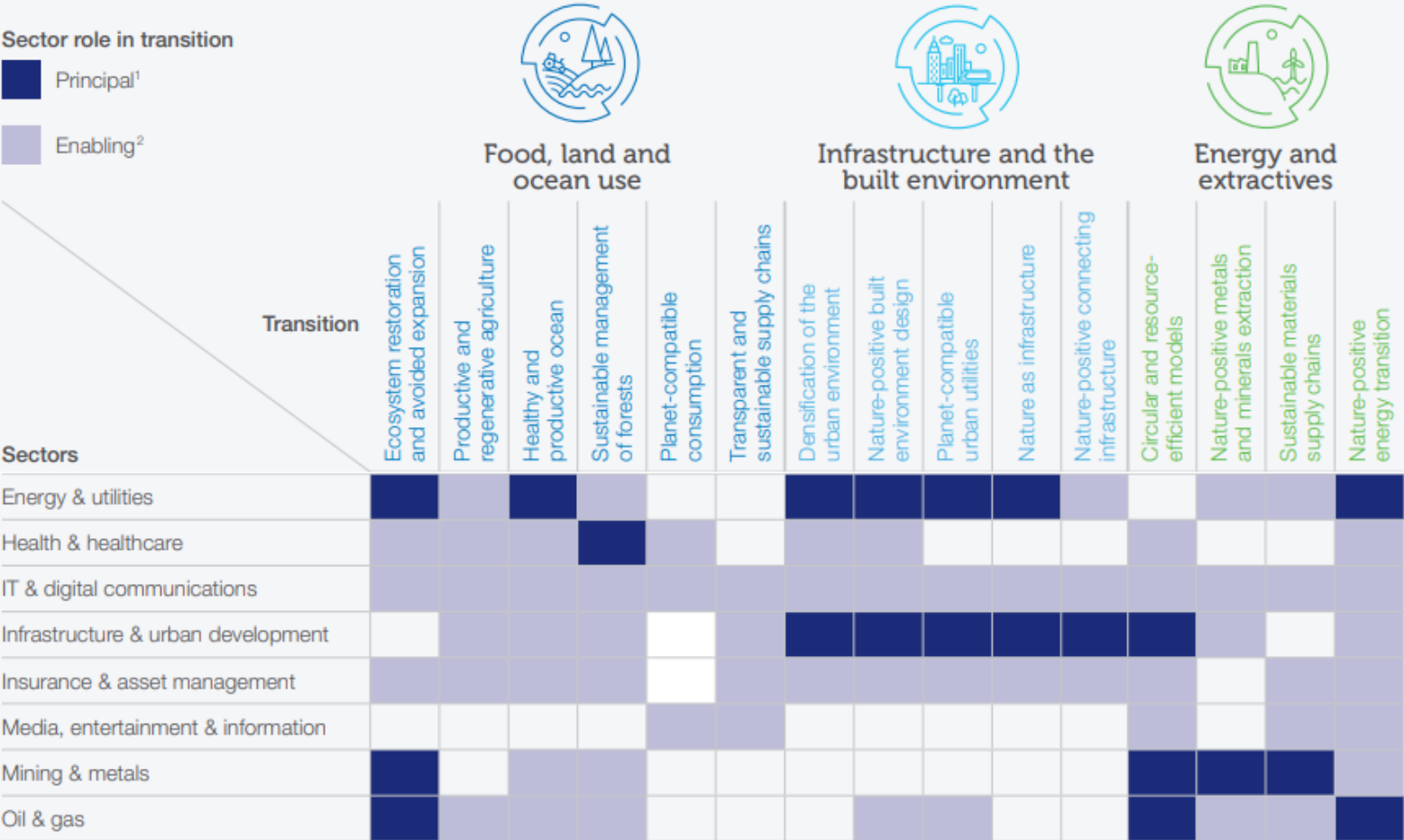
# A NATURE-POSITIVE TRANSITION PRESENTS BUSINESS OPPORTUNITIES



Source: World Economic Forum (2020)

# THE ENERGY SECTOR WILL BE CRITICAL TO KEY TRANSITIONS

A number of key sectors in the economy will be critical to engage in the business agenda across socio-economic systems



Source: World Economic Forum (2020)



# GOOD BIODIVERSITY MANAGEMENT...

...leads to many benefits for business

Maintained access to finance

Continued supply of resources

Resilient operations

Supporting regulatory compliance

Increased/maintained reputation & licence to operate

Supporting dialogue with indigenous people and communities

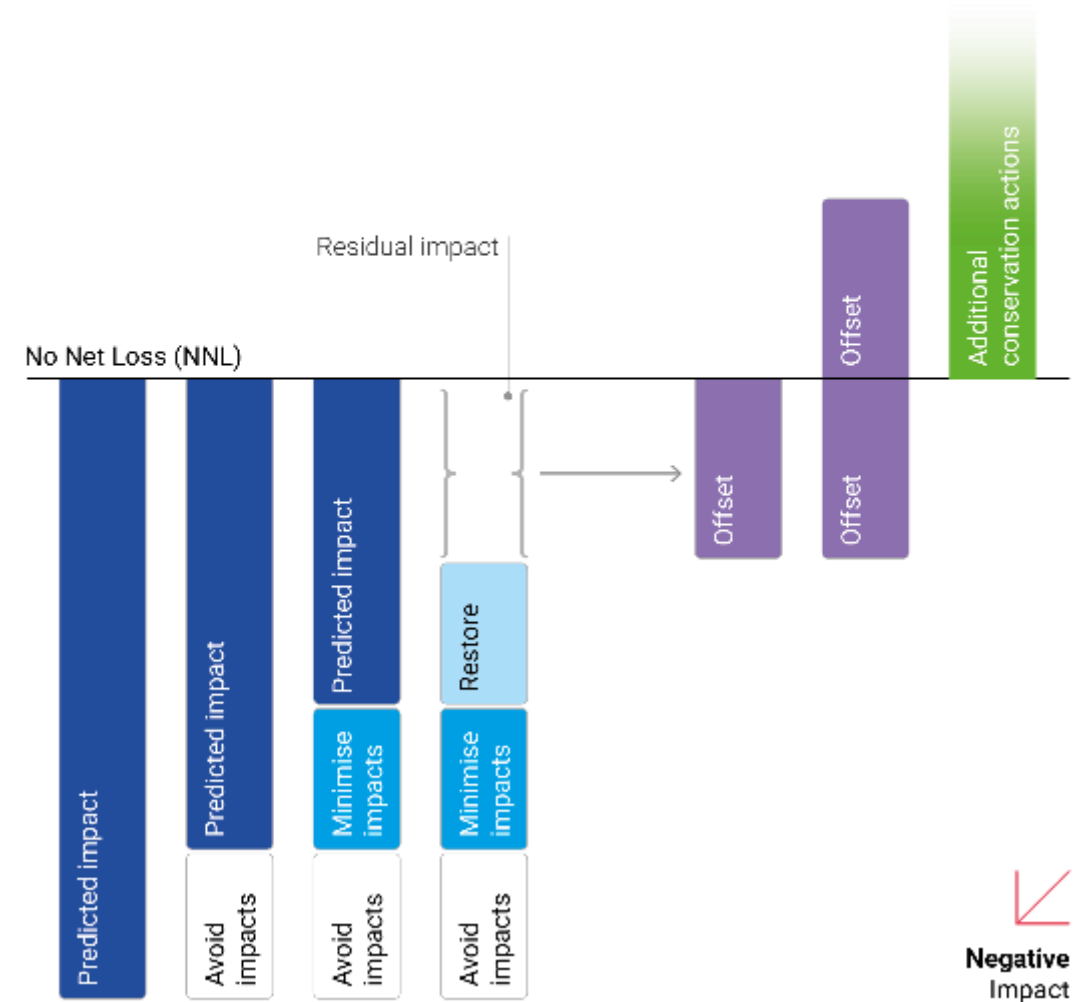
# THE QUESTION THEN BECOMES HOW...



Net Gain (NG)

Sequential steps to minimise negative impacts on biodiversity:

1. Avoidance
2. Minimisation
3. Restoration
4. Offsetting



Negative Impact

A lighthouse with a red and white striped tower and a black lantern room stands on a calm sea. The sky is a vibrant orange and red, reflecting on the water. The lighthouse is positioned on the left side of the frame.

Overview of the Proteus Partnership and objectives

## UN Environment Programme

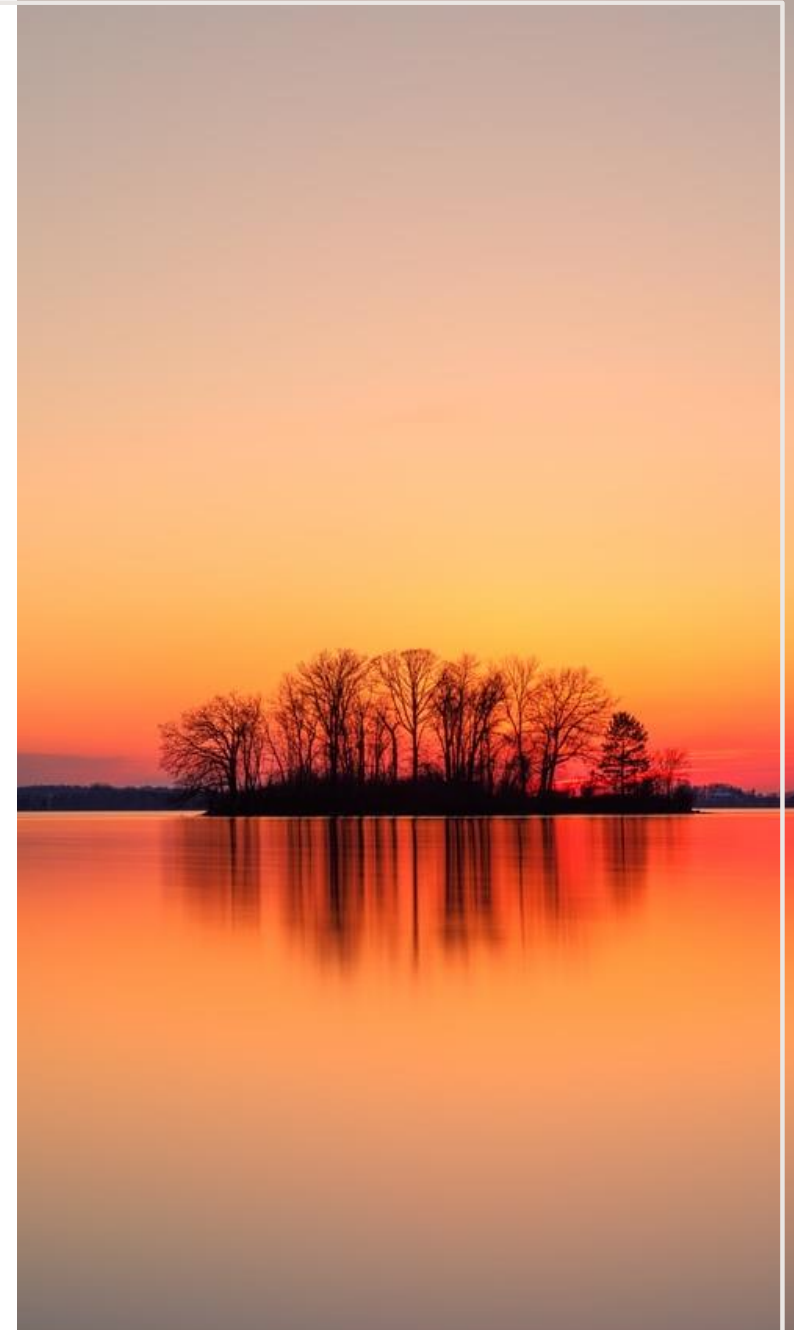
- World's foremost intergovernmental environmental organisation
- Established by UN General Assembly in 1972
- Headquartered in Nairobi, Kenya

## WCMC

- UK charity, based in Cambridge
- Created by IUCN in 1979
- 1988 – Became independent organisation with three partners: IUCN, WWF and UN Environment Programme
- 2000 – Formal collaboration with UN Environment Programme

## UNEP-WCMC

- UNEP's specialist Centre for biodiversity
- Currently employs 180 staff across a range of biodiversity disciplines





## Our Vision

- The UN Environment Programme World Conservation Monitoring Centre strives for a world living in harmony with nature by 2050

## Our Impact Areas

- **Nature Conserved** – resilient, connected ecosystems and their species are conserved, sustaining all life on Earth
- **Nature Restored** - Degraded lands, inland waters and the ocean are restored for the benefit of people and nature.
- **Nature-based Solutions** - Public and private sectors make effective use of nature to address sustainable development challenges.
- **Nature Economy** - The world transitions to a nature-positive global economy.

# PROTEUS – A LONG-TERM COLLABORATION BETWEEN THE PRIVATE SECTOR AND UNEP-WCMC

## Vision:

- A planet where business contributes to a clean, healthy, resilient environment for all.

## Mission:

- Support companies to be nature positive.





# GOALS OF THE **proteus** PARTNERSHIP

1. Help companies recognise their responsibilities for nature and communicate the business case for its management
2. Accelerate and scale decision support tools and capacity building to help improve corporate performance
3. Strengthen and increase business engagement in the global policy agenda on nature
4. Sustain a viable mutually beneficial partnership through cross-sectoral collaboration

# EXAMPLES OF PROTEUS PARTNER NATURE COMMITMENTS

**Teck:** “Goal to become a **nature positive** mining company by 2030 ... including through conserving or rehabilitating at least three hectares for every one hectare affected by its mining activities”

**BHP:** “create **nature-positive outcomes** by having at least 30% of land and water...under conservation, restoration or regenerative practices”

**Shell:** “new projects in areas rich in biodiversity – critical habitats – will have a **net positive impact** on biodiversity

**Hydro:** “**No net loss** of biodiversity in new projects”

**Newmont:** “[new projects] **No net loss** of key biodiversity values as a result of mine-related activities or a **net gain**, when possible, within 10 years post mine closure”

**Anglo American:** “achieving a **net positive impact** on biodiversity across our managed operations”

**BP:** “From 2022 all new bp projects in scope will have plans in place aiming to achieve **net positive impact** (NPI)”



# HOW PROTEUS RESOURCES CAN SUPPORT ENGIE

Project level

- Complement project-level risk assessment and site selection
- Environmental Impact Assessments (EIAs)
- Application of the mitigation hierarchy
- Biodiversity action planning
- Site closure / decommissioning
- Alignment with performance standards

Policy level

- Screening potential investments
- Supply chain management
- Development of biodiversity management strategy
- Portfolio analysis and reporting on global footprint

# PROTEUS TOOLS AT A GLANCE

## Protected Planet

The online interface with the World Database on Protected Areas (WDPA)

Access: [www.protectedplanet.net](http://www.protectedplanet.net)



## The Integrated Biodiversity Assessment Tool (IBAT)

Access to site- and landscape-scale datasets

Access: <https://ibat-alliance.org/>



## Biodiversity A-Z

Online glossary of terms

Access: [www.biodiversitya-z.org](http://www.biodiversitya-z.org)



## Ocean+

Access to metadata for over 190 datasets

Access: <https://oceanplus.org/>



## Ocean Data Viewer

Access to over 30 marine and coastal datasets

Access: <http://data.unep-wcmc.org>

OCEAN DATA VIEWER

## Proteus website

Access all information resources offered through Proteus

Access: [www.proteuspartners.org](http://www.proteuspartners.org)

proteus



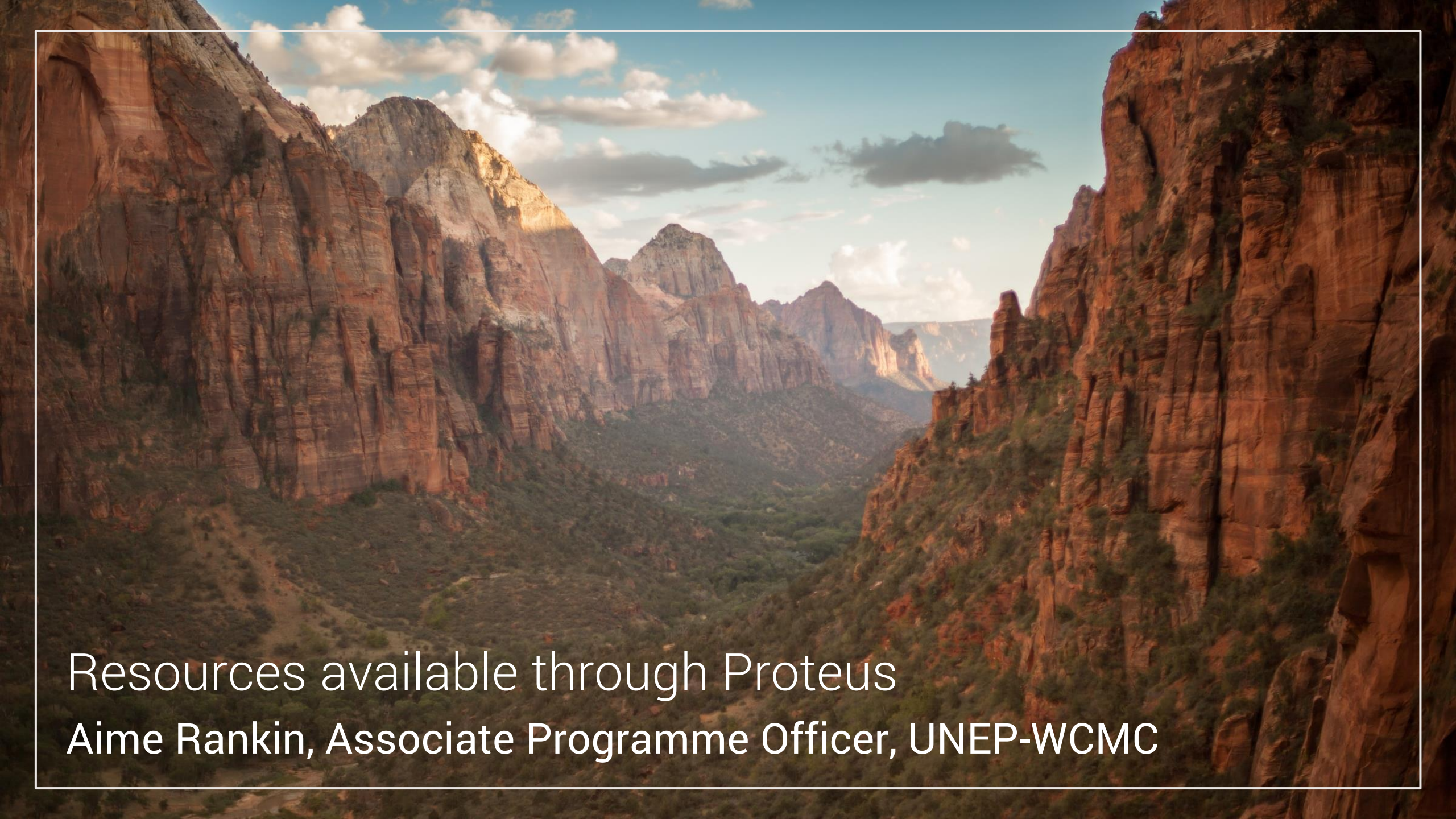
# PROTEUS BENEFITS

## Data and analytics

- Technical Briefings on challenges and questions raised by Partners
- Data verification support from the UNEP-WCMC expert team
- Access to a specialist cross-Partnership data forum supporting peer-to-peer learning with other technical experts
- Web services delivering data directly into partner systems

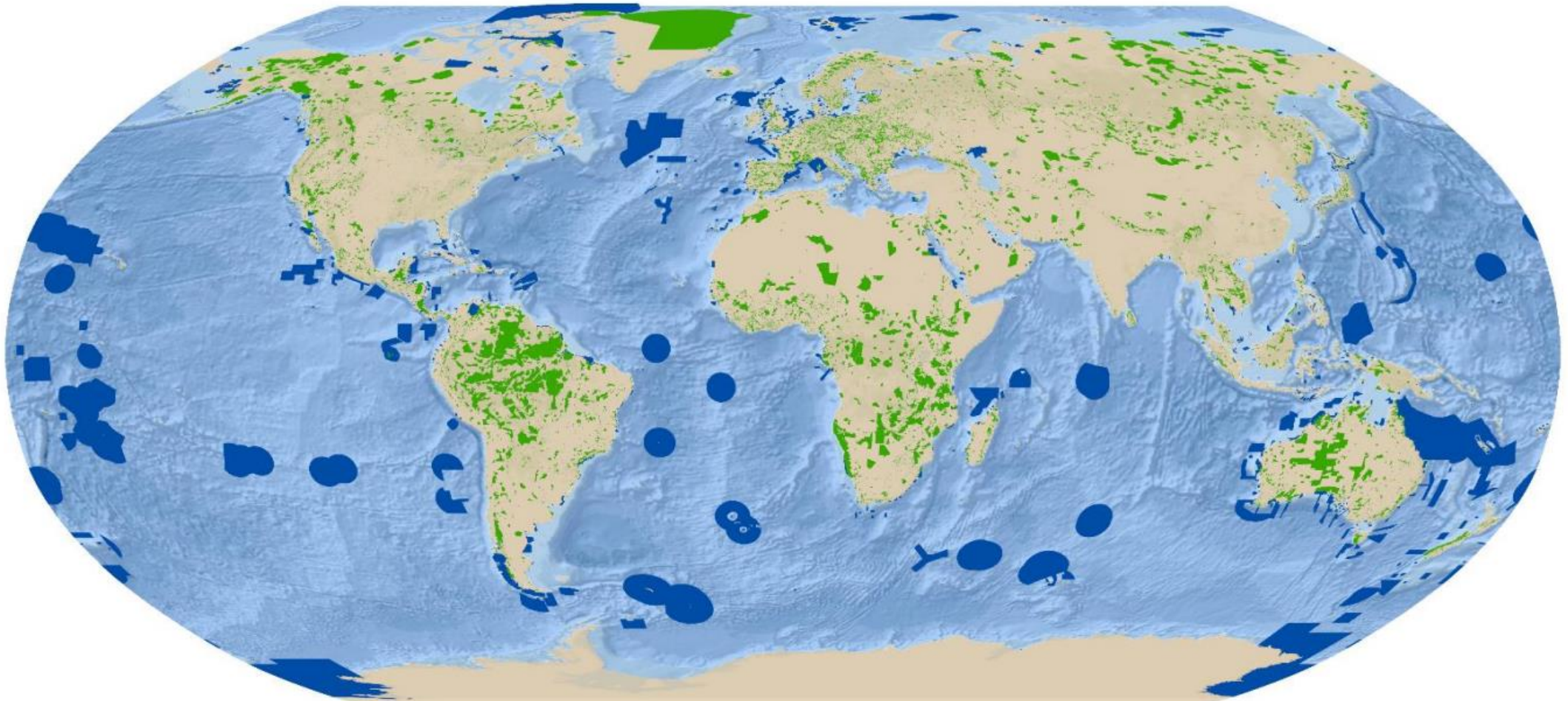
## Capacity and support

- Technical assistance from UNEP-WCMC's expert team
- Online and in person training and access to training resources
- Horizon scanning webinars and briefings, helping companies track progress, upcoming events and potential business implications
- Access to and influence over development of the Biodiversity A-Z



Resources available through Proteus  
Aime Rankin, Associate Programme Officer, UNEP-WCMC

# THE WORLD DATABASE ON PROTECTED AREAS



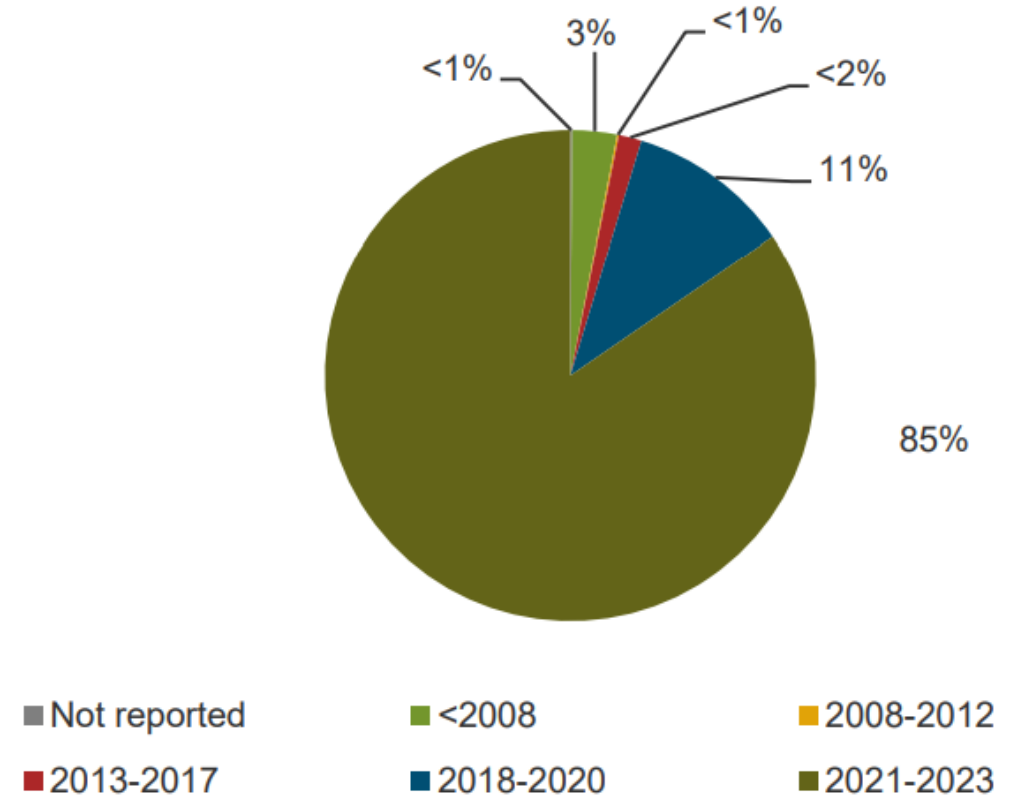
Source: UNEP-WCMC and IUCN (2023). Protected Planet: The World Database on Protected Areas (WDPA) [On-line], February 2023, Cambridge, UK: UNEP-WCMC. Available at [www.protectedplanet.net](http://www.protectedplanet.net)

 **Terrestrial protected areas**  **Marine and coastal protected areas**

# FIVE YEAR UPDATE FREQUENCY TARGET

- Most of the WDPA has been updated in the last five years.
- Focus on Proteus Partner priority countries.
- Some countries are challenging to update.

Percentage of records updated or validated by year



# MONTHLY UPDATES

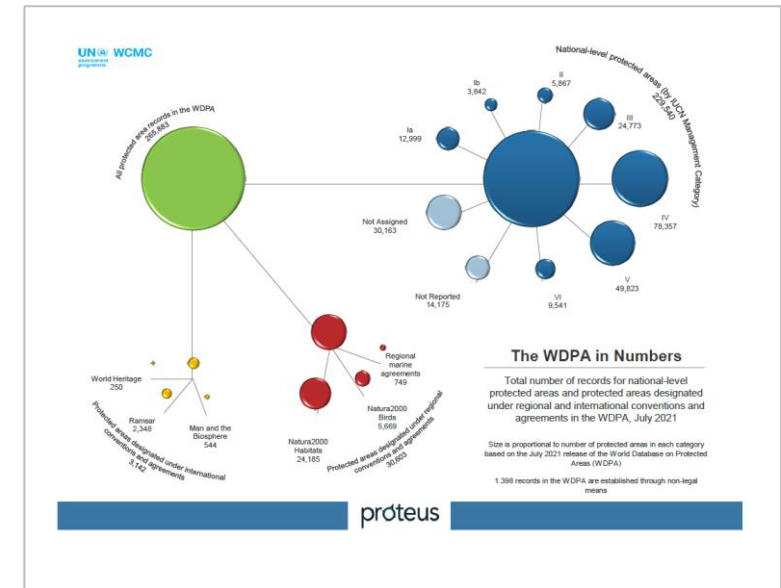
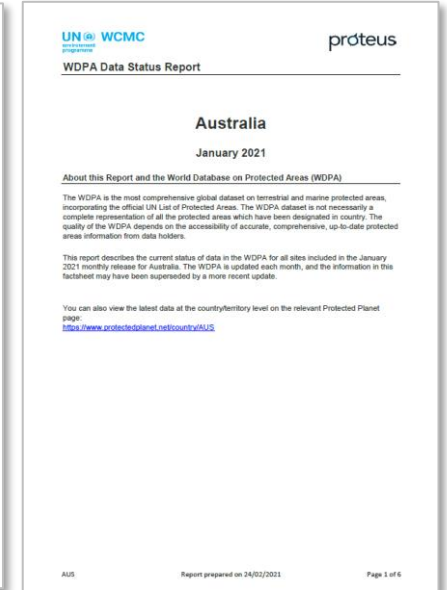
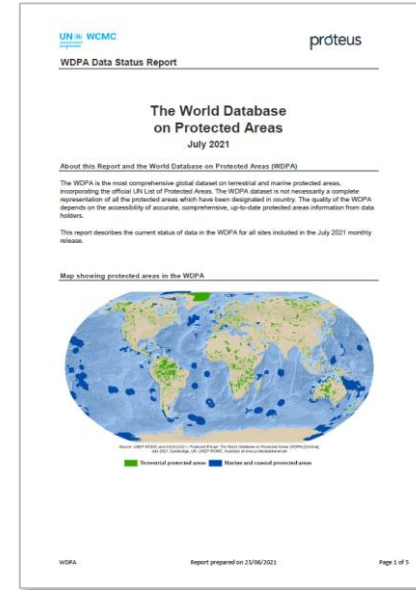


Download the February 2023 WDPa release

The total number of protected area records in this release is **285,466** comprising **273,207** polygons and **12,259** points. Please click on the links below to access the data factsheet and infographic for this release of the WDPa.

Data Factsheet

Infographic



# OCEAN+

oceanplus.org

## Ocean+

Home to more than half of all life on Earth, the Ocean covers over 70% of the surface of the planet.

The ocean contains some of the most productive ecosystems, vast natural resources, and unique habitats on Earth. The ocean also plays a vital role in regulating the planet's climate. However, the marine environment is facing many pressures, from the impacts of climate change and overfishing to the effects of pollution from microplastics and marine litter.

Accurate and up-to-date data and information are required to support adaptive conservation and resource management that can help to mitigate these impacts, and to conserve marine species and habitats.

**Ocean+ Library**  
Ocean+ Library addresses this need for information by providing an overview of global marine and coastal datasets of biodiversity importance, including some datasets of regional interest.

**Ocean+ Habitats**  
Ocean+ Habitats aims to improve access to marine habitat data and information through partnerships, and will be evolving to include regional and national information.

**protected planet**  
Protected Planet – Marine presents the most recent official coverage statistics for marine protected areas, updated monthly from the World Database on Protected Areas.

**OCEAN DATA VIEWER**  
The Ocean Data Viewer offers users the opportunity to view and download a range of spatial datasets that are useful for informing decisions regarding the conservation of marine and coastal biodiversity.

Global resources   Submit metadata   Data limitations

data

resources on ocean biodiversity.

Increased dramatically, including through Ocean+ Library, identify what matters to you.

About the site

Leaflet | Terms & Feedback

Publication date: 2019

funded by **proteus** partners for a wiser world

The designations employed and the presentation of material on this map do not imply the expression of any opinion whatsoever on the part of the Secretariat of the United Nations concerning the legal status of any country, territory, city or area or of its authorities, or concerning the delimitation of its frontiers or boundaries.

All rights reserved. UNEP **UN WCMC** Terms and Conditions

# OCEAN+ DATA VIEWER

- A portal for viewing and downloading spatial datasets useful for managing and conserving marine and coastal biodiversity.



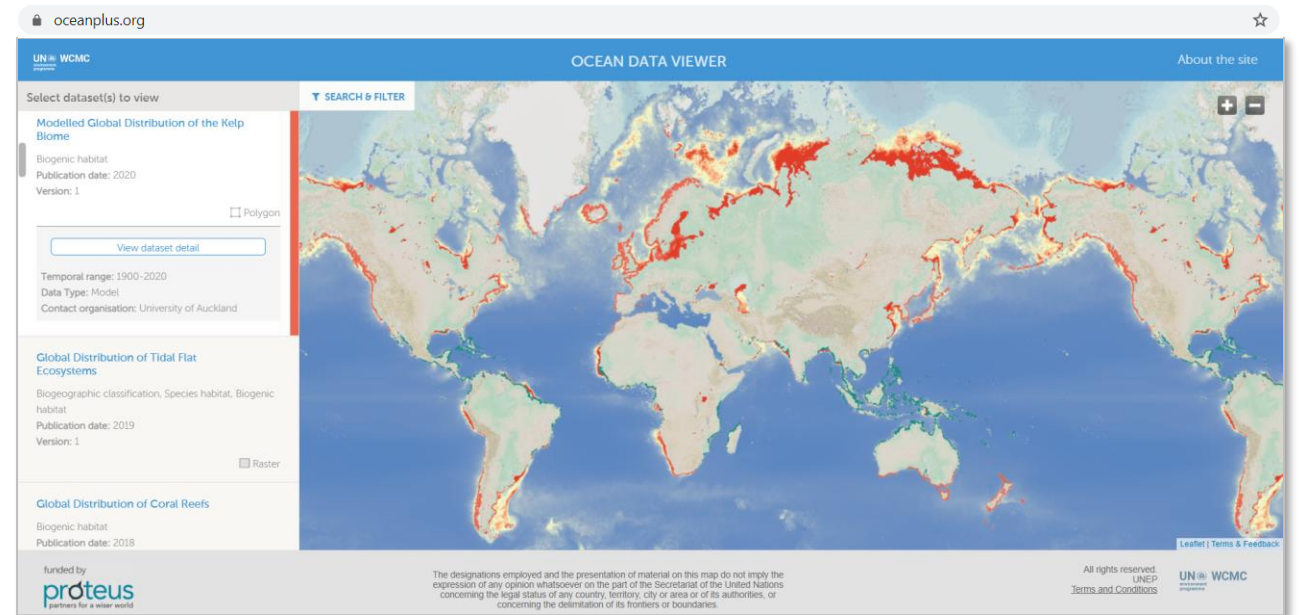
More than 2.5 million records of marine and coastal habitats



More than 2.1 million km<sup>2</sup> of marine and coastal areas mapped

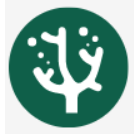


More than 30 marine datasets available for use\*



# OCEAN+ HABITATS

- Developing national, regional and global inventories of ocean habitat occurrence, with statistics on coverage and progress toward targets.



Warm-water corals



Cold-water corals



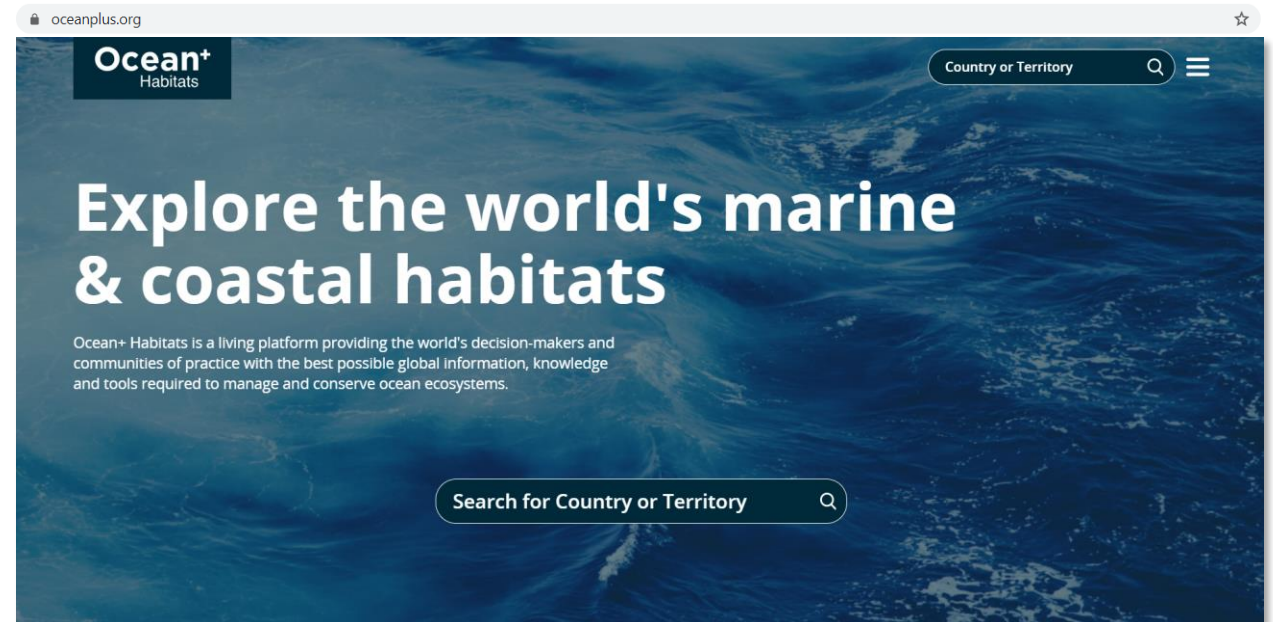
Seagrasses



Saltmarshes



Mangroves



# OCEAN+ LIBRARY

- A library of 190+ resources of data and information relevant to marine and coastal biodiversity, and for uses related to:



Marine spatial planning



Education



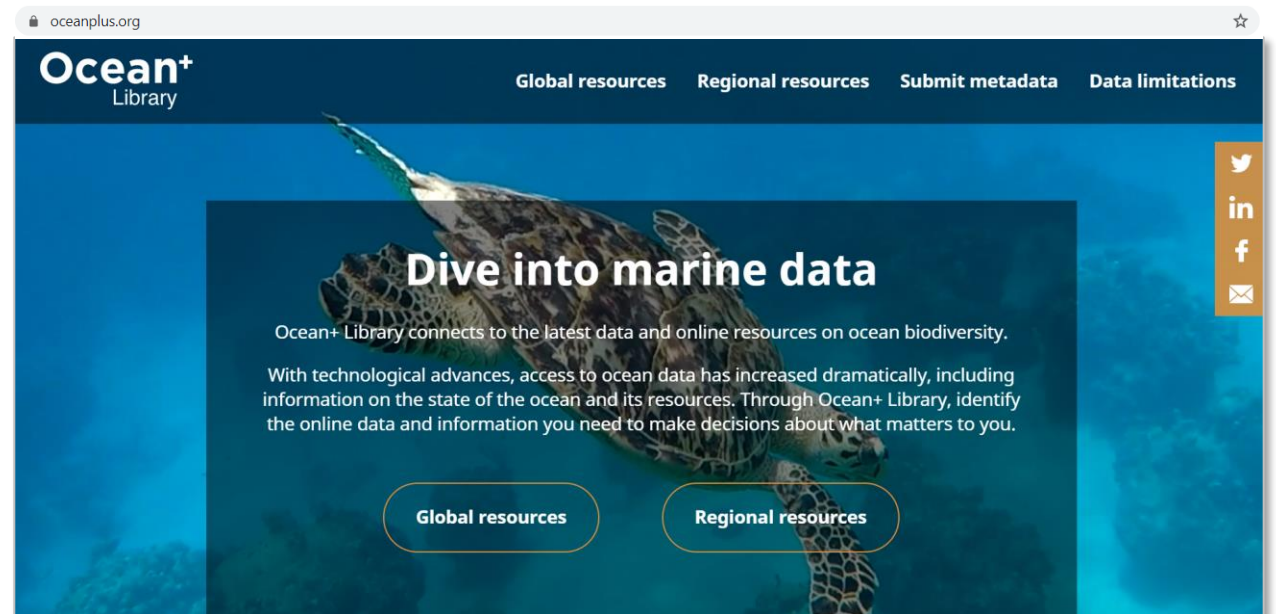
Environmental impact assessment



Ecosystem assessment



Ecosystem services



# BIODIVERSITY A-Z

The screenshot shows the homepage of the biodiversity-a-z.org website. At the top, the browser address bar displays "biodiversity-a-z.org". The website header includes the "BIODIVERSITY a-z" logo, the "UN WCMC" logo, and navigation links for "ABOUT" and "BROWSE THEMES". A search bar with the text "Search" and a dropdown menu for "All themes" is positioned below the header. The main content area features a large background image of colorful parrot feathers. Below this image, the text "Concise and authoritative information about biodiversity" is displayed. A "Browse by theme:" section contains five circular icons: a red bird for "ACRONYMS", a green ant for "AREAS", a yellow globe for "COUNTRIES", a blue fish for "MARINE", and an orange lizard for "TERMS". At the bottom of the page, a dark blue footer contains the text "Definition: Biodiversity" and a detailed definition of biodiversity.

UN WCMC  
environment  
programme

BIODIVERSITY a-z | UN WCMC  
ABOUT | BROWSE THEMES

Concise and authoritative information about biodiversity

Search | All themes

Browse by theme:

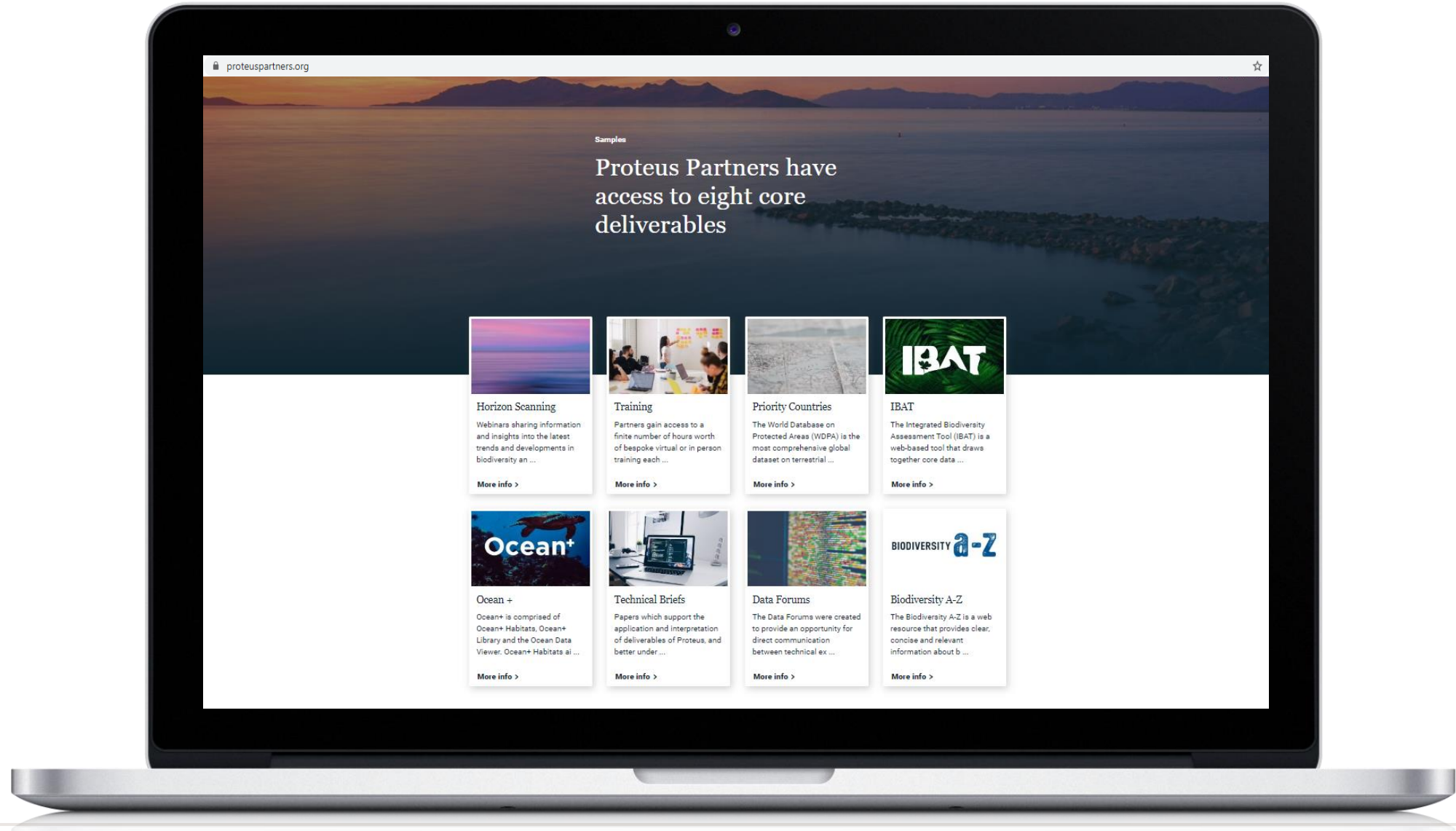
- ACRONYMS
- AREAS
- COUNTRIES
- MARINE
- TERMS

Definition: Biodiversity

**Biodiversity**

Biological diversity means the variability among living organisms from all sources including, inter alia, terrestrial, marine and other aquatic ecosystems and the ecological complexes of which they are a part; this includes diversity within species, between species and of ecosystems.

# PROTEUS WEBSITE (www.proteuspartners.org)



# PROTEUS TECHNICAL BRIEFS

UNEP-WCMC Technical Briefing  
December 2021

proteus

## The Global Energy Transition

The role of mining and energy companies in enabling a nature positive energy transition

### Key Messages

- The global energy transition will significantly increase demand for key metals and minerals.
- The surge in demand will open up new frontiers of mineral extraction and has the potential to exacerbate existing environmental and social risks in operations and along supply chains for mining companies and their customers such as renewable energy companies.
- If left unchecked, these material risks may slow clean energy deployment and imperil the nature positive transition needed to halt climate change and biodiversity loss.
- Recommendations on where Proteus Partners must act to minimise biodiversity-relevant risks within their operations and supply chains and enable a nature positive energy transition include:
  1. Integration of circular design principles and closed loop efforts in the production of energy assets
  2. Accelerate the adoption of net-gain approaches to mitigate site-based impacts
  3. Contribute to closing the knowledge gap on the ecological impacts of operating in new frontiers such as deep-sea mining
  4. Disclose footprint and adopt transparent, responsible supply chains supported by verified certification schemes and due diligence procedures
  5. Underpin biodiversity commitments with meaningful indicators based on sound and scientific criteria
  6. Gain more control over the compliance of social and environmental standards along the supply chain through e.g. vertical integration and partnerships
  7. Decarbonise operations and portfolios and divest from fossil fuels

UNEP-WCMC Technical Briefing  
November 2021

proteus

## The Area of Influence of site-based operations – Direct Impacts

Assigning buffer distances for high-level screening of biodiversity exposure based on direct impacts



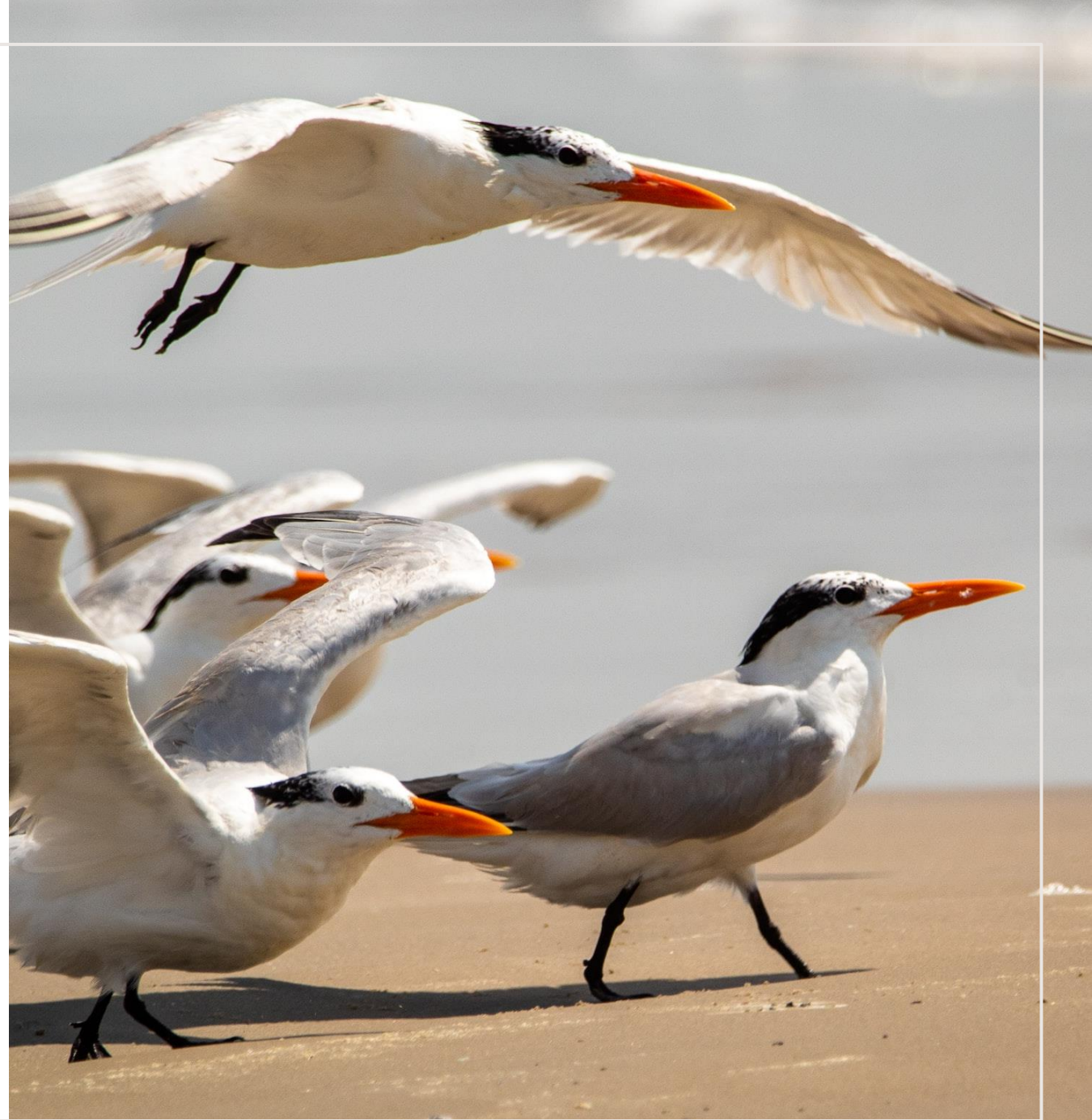
### Key Messages

- Defining an appropriately scaled 'Area of Influence' is integral to high level screening processes that aim to identify important biodiversity features that may generate risk.
- Area of influences should include the extent of expected pressures that stem from the site and consider potential for indirect impacts on biodiversity.
- To date however, there lacks consensus or quantitative guidance on appropriate buffers to be applied in different contexts. Understanding the factors underlying variation in the distances impacted by sites forms the foundations of a decision-making framework, presented here, to address this knowledge gap.
- Available literature to create generalised rules is disparate, and there is a lack of research that compares pressures between sectors and habitats systematically. However, best available information suggested that the following approach should be applied for direct impacts:
  - A 10km buffer is likely to cover the majority of direct impacts of terrestrial mines in most habitats, and, applying a precautionary approach, a 5km buffer likely to cover the impacts of terrestrial oil and gas, whose impacts are generally shown to impact smaller distances than mining. These should be taken as a minimum starting point when deciding on buffers to apply during screening.

proteus

# PROTEUS HORIZON SCAN WEBINARS

A series of webinars for Proteus Partners sharing information and insights into the latest trends and developments in biodiversity and ecosystem services policy, initiatives, data and tools.



# PROTEUS DATA FORUMS

A series of webinars for Proteus Partners that provide a venue for direct communication between data users and technical experts, help increase familiarity with Proteus resources and support identification of common challenges & finding solutions



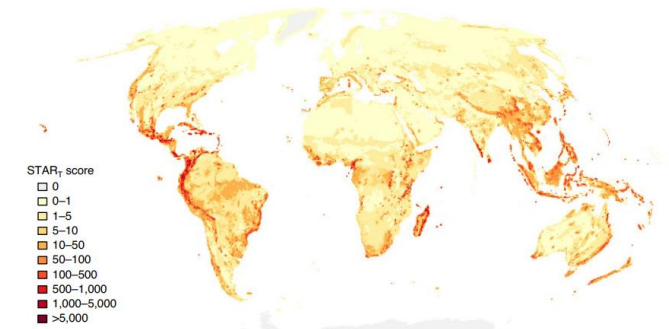
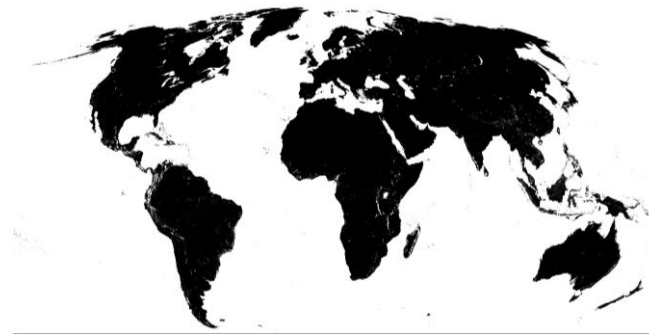
# DATA VERIFICATION AND TECHNICAL SUPPORT

Data verification – clarifications on data quality and interpretation



*Example query - Potential protected area (green) boundary discrepancy when compared to satellite imagery*

Technical support – assistance or guidance on technical work









*Example query – Visualisation of the global STAR Threat Abatement score layer*



# A look at biodiversity data through the Integrated Biodiversity Assessment Tool (IBAT)

Aime Rankin, Programme Officer, UNEP-WCMC

# WHAT IS IBAT?

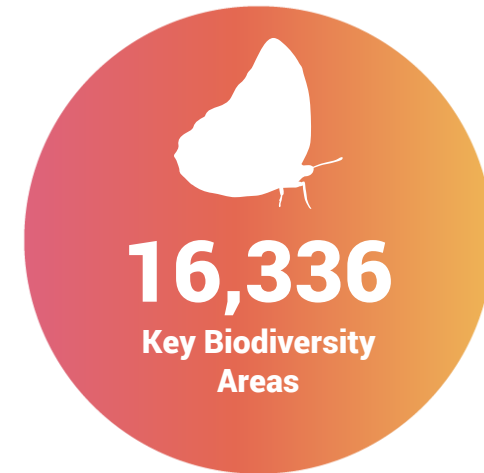
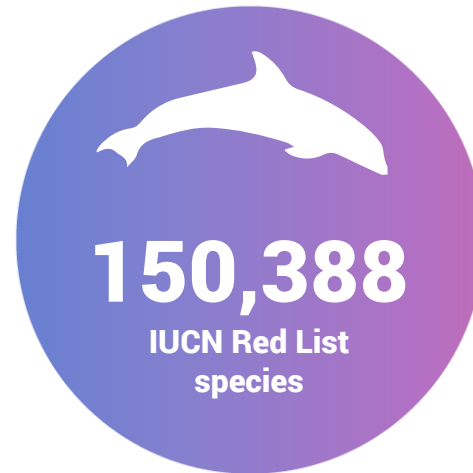
- A web-based map & reporting tool that provides fast, easy & integrated access to critical biodiversity information.
- An alliance between:
  -  CONSERVATION INTERNATIONAL
  -  IUCN
  -  BirdLife INTERNATIONAL
  -  Partnership for nature and people
  -  UN environment programme
  -  WCMC
- The source of the most globally authoritative biodiversity data:
  - The World Database on Protected Areas
  - The World Database of Key Biodiversity Areas
  - The IUCN Red List of Threatened Species
    - Species Threat Abatement and Restoration (STAR)
    - Rarity-weighted richness layer
- A link between the private sector and biodiversity conservation.
- Incorporate biodiversity considerations into project planning and management decisions

# IBAT DATASETS

The World Database on Protected Areas (Updated monthly)

The World Database of Key Biodiversity Areas (Updated 3 times a year)

The IUCN Red List of Threatened Species (Updated at least 3 times a year)



\* IBAT is the only place where each of these datasets is available for commercial users

# WHAT ARE PROTECTED AREAS?

“A clearly defined geographical space, recognised, dedicated and managed, through legal or other effective means, to achieve the long-term conservation of nature with associated ecosystem services and cultural values.” (IUCN 2008)

## Key features

- Ability to delineate
- Management of the area
- Core objective of nature conservation

## Effective means

- National law
- International conventions & agreements
- Customary law or land tenure

## Governance

- Government
- Shared
- Private
- Community

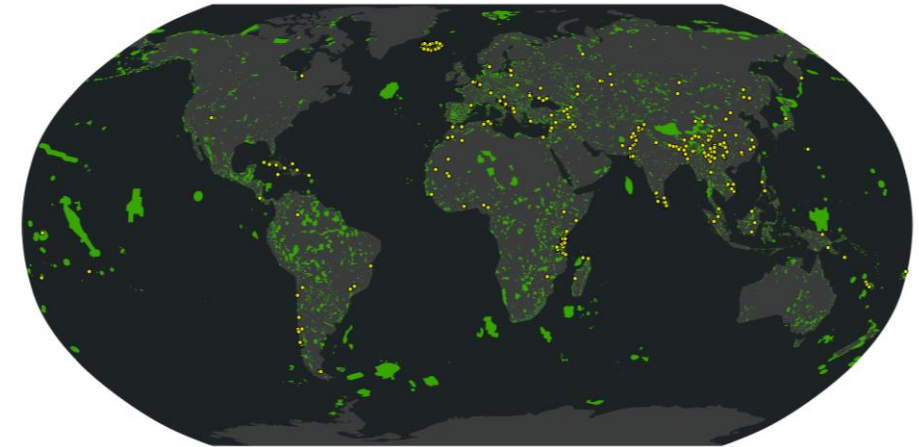
# WHAT ARE KEY BIODIVERSITY AREAS (KBAs)?

“Sites contributing significantly to the global persistence of biodiversity.”

(IUCN 2016)

- Originally identified for birds
- Recently expanded to other taxa
- New criteria across taxa and realms promote KBAs as the key biodiversity site designation
- Over 16,000 identified so far

Key Biodiversity Areas (KBAs)



• Points  
■ Polygons  
BirdLife International (2021). World Database of Key Biodiversity Areas. Projection Robinson, Central Meridian 0 © UNEP-WCMC 2022



# IUCN RED LIST OF SPECIES

- Established in 1964 by IUCN
- >150,388 species assessed as of February 2023
- Information on threats, ecological requirements, habitats and conservation actions to reduce or prevent extinctions
- Standardised assessment process to categorise species
- Re-evaluation every ~ 5-10 years
- Three categories of 'Threatened' species: Critically Endangered, Endangered and Vulnerable
- List also includes other categories e.g. 'Least Concern' species

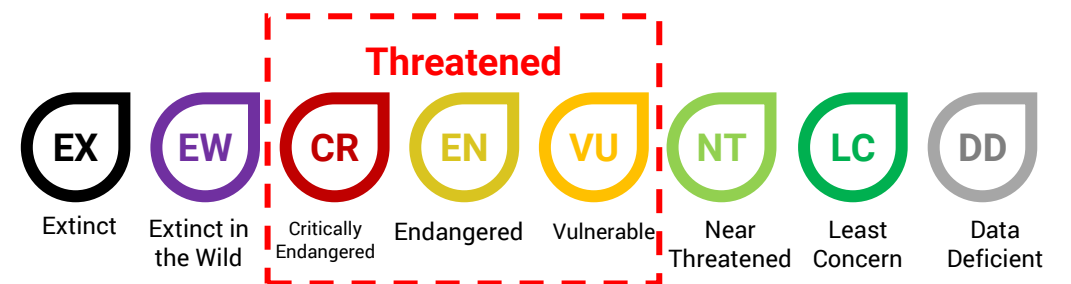
THE IUCN RED LIST OF THREATENED SPECIES™

Names - common, scientific, regions etc...

Amazing species

**More than 26,500 species** are threatened with extinction  
That is more than 27% of all assessed species.

Group	Percentage
Amphibians	40%
Mammals	25%
Corals	34%
Birds	14%
Invertebrates	31%
Fish	33%
Selected Crustaceans	27%



# KEY FEATURES OF IBAT

## Features

- Ability to draw polylines and polygons
- Upload multiple sites (csv, shp, KMZ, KML)
- Download data per specified area
- Create portfolio of 'Projects' (sites)
- Site page giving overview of a site
- Multiple report types: Proximity, IFC PS6/World Bank ESS6, Freshwater, Multi-site
- Ability to view all data in the IBAT map

## Real-time updates

- Protected Areas
- Key Biodiversity Areas
- Red List of Species data
- Species Threat Abatement and Restoration (STAR)

## Committed to continuous improvement and user support

- Fully maintained
- Scientifically robust
- Committed to innovation and new functionality

# WHAT IS AVAILABLE THROUGH IBAT?

## Download Data

**FULL GLOBAL DOWNLOAD**

As an annual subscriber, you can download complete global spatial data sets in esri formats (for use with, for example, ESRI's suite of GIS applications):

<p><b>World Database on Protected Areas</b></p> <p>Oct 2021</p> <p>The World Database on Protected Areas (WDPA) is the most comprehensive global database on terrestrial and marine protected areas. It is a joint project between the United Nations Environment Programme (UNEP) and the International Union for Conservation of Nature (IUCN), managed by UNEP World Conservation Monitoring Centre (UNEP-WCMC). Data for the WDPA is collected from international convention secretariats, governments and collaborating NGOs. The WDPA uses the IUCN's definition of a protected area as the main criteria for entries to be included in the database.</p> <p><a href="#">View Fact Sheet</a></p> <p>File size ~ 1.3 GB</p> <p><a href="#">Download</a></p>	<p><b>World Database of Key Biodiversity Areas</b></p> <p>Apr 2021</p> <p>The World Database of Key Biodiversity Areas is managed by BirdLife International on behalf of the KBA Partnership. It hosts data on global and regional Key Biodiversity Areas (KBAs), including Important Bird and Biodiversity Areas identified by the BirdLife International Partnership, Alliance for Zero Extinction sites, KBAs identified through hotspot ecosystem profiles supported by the Critical Ecosystem Partnership Fund, and a small number of other KBAs. The database was developed from the World Bird and Biodiversity Database (WBDB) managed by BirdLife International.</p> <p>File size ~ 230 MB</p> <p><a href="#">View Fact Sheet</a></p> <p><a href="#">Download</a></p>	<p><b>IUCN Red List Spatial Data</b></p> <p>Sep 2021</p> <p>The IUCN Red List of Threatened Species contains global assessments for just over 138,374 species, of which about two-thirds have spatial data. This spatial data provided in this download is for comprehensively assessed taxonomic groups. It is important to note that some species such as those listed as Data Deficient are not mapped and subspecies are mapped within the parental species. The data is available as ESRI shapefiles format and contains the known range of each species. Ranges are depicted as polygons, except for the freshwater HydroSHED tables.</p> <p>File size ~ 7 GB</p> <p><a href="#">View Fact Sheet</a></p> <p><a href="#">Download</a></p>	<p><b>Species Threat Abatement and Restoration (STAR)</b></p> <p>Sep 2021</p> <p>STAR uses existing species and threat data from the IUCN Red List to produce two complementary global layers presenting threat abatement and restoration potential. This enables identification of specific threat abatement and habitat restoration opportunities to reduce species extinction risk. STAR scores for any given Area of Interest therefore provide an indication of the relative potential contribution to reducing species extinction risk through either threat abatement or restoration activities.</p> <p>File size ~ 1.2 GB</p> <p><a href="#">View Metadata</a></p> <p><a href="#">Download</a></p>
--	--	--	--

# IBAT REPORTS

## Proximity Reports

- High-level early stage biodiversity risk screening for a single site.
- Buffers from 1 to 50 km.
- Assess for overlap with:
  - Protected Areas.
  - Key Biodiversity Areas.
  - IUCN Red List species.

Create Report

Select Report Type

Freshwater Multi-site **Proximity**

PS6 & ESS6

Select Project

Please select an option

Select Buffers (km)

Hold down Ctrl or ⌘ to select up to 3 buffers.

Please select between 1 and 3 options

1 2 3 4 5

Create Cancel

Require further information on the reports IBAT offers? Head over to our [examples page](#) for a detailed explanation of each report and a downloadable example.



## Integrated Biodiversity Assessment Tool PROXIMITY REPORT TRAINING\_TEST\_1

Country: Mozambique  
Location: [-25.9, 32.6]  
Date of analysis: 11 January 2022 (GMT)  
Buffers applied: 1 km | 10 km | 50 km  
IUCN Red List Biomes: Marine, Freshwater, Terrestrial  
Generated by: Aime Rankin  
Organisation: UNEP-WCMC

### Overlaps with:

Protected Areas	5
Key Biodiversity Areas	6
IUCN Red List	137



Displaying project location and buffers: 1 km, 10 km, 50 km

# IBAT REPORTS

## Freshwater

- High-level early stage biodiversity risk screening for a single site with potential to impact freshwater ecosystems.
- Upstream and downstream buffers.
- Point features only.

Create Report

Select Report Type

Freshwater Multi-site Proximity

PS6 & ESS6

Select Project

Please select a project that has a point geometry. A freshwater report cannot be generated for polylines or polygons.

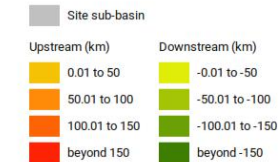
Define the upstream and downstream range for the report below.

Upstream (KM)		Downstream (KM)	
Zone	Distance	Zone	Distance
1	50	1	50
2	100	2	100
3	150	3	150
4	Beyond Zone 3	4	Beyond Zone 3

Create Cancel

IBAT

Upstream beyond 150



# IBAT REPORTS

## World Bank Group Risk Reports

- High-level early stage biodiversity risk screening for a single site with specific reference to PSS6 and ESS6.
- Assesses Critical habitat likelihood.
- Buffers pre-defined at 10 and 50 km.

Create Report

Select Report Type

Freshwater Multi-site Proximity

PS6 & ESS6

Select Project

Please select an option

Create Cancel

Require further information on the reports IBAT offers? Head over to our [examples page](#) for a detailed explanation of each report and a downloadable example.



## Integrated Biodiversity Assessment Tool World Bank Group Biodiversity Risk Screen

### TRAINING\_TEST\_1

- Country: Mozambique
- Location: [-25.9, 32.6]
- IUCN Red List Biomes: Marine, Freshwater, Terrestrial
- Created by: Aime Rankin

#### Overlaps with:

Protected Areas	1 km: 0	10 km: 1	50 km: 4	5
World Heritage (WH)	1 km: 0	10 km: 0	50 km: 0	0
Key Biodiversity Areas	1 km: 0	10 km: 1	50 km: 5	6
Alliance for Zero Extinction (AZE)	1 km: 0	10 km: 0	50 km: 1	1
IUCN Red List				64
Critical Habitat				Likely



Displaying project location and buffers: 1 km, 10 km, 50 km



This report is based on IFC Performance Standard 6 (PS6) but applies to World Bank Environmental and Social Standard 6 (ESS6)

# IBAT REPORTS



## Multi Site

- IBAT Multi-site reports designed to help companies reporting for GRI/ SASB, and certification schemes .
- GRI Disclosure 304-1 Identify operational sites owned, leased, managed in, or adjacent to, **protected areas** and areas of high biodiversity value outside protected areas (such as **Key Biodiversity Areas**)
- GRI Disclosure 304-4 Identify presence of **IUCN Red List** species and national conservation list species with habitats in areas affected by operations.

Site	Parent	Site Name	Site Type	Country	Region	State	County	City	Postcode	Latitude	Longitude	Area (km <sup>2</sup> )	Protected Areas	KBAs
1	IBAT	Training Test 1	Operational	UK	England	North Yorkshire	Hambleton	Hambleton	YO21 2JG	53.85	-1.05	0	5	6
2	IBAT	Training Test 2	Operational	UK	England	North Yorkshire	Hambleton	Hambleton	YO21 2JG	53.85	-1.05	0	173	20

### Overlap with protected areas and Key Biodiversity Areas (KBAs)

The following table shows the number of protected areas and KBAs overlapped by a 50.0 km buffer for each operational site where an overlap occurs.

Site	Area (km <sup>2</sup> )	Protected Areas	KBAs
Training_test_1	0	5	6
Training_test_2	0	173	20

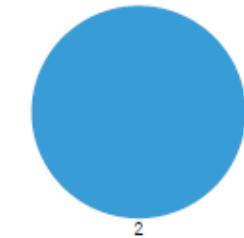
### % Summary of protected areas overlap



2 (100.00% of sites) are within 50.0 km of a protected area.

0 (0.00% of sites) are not within 50.0 km of a protected area.

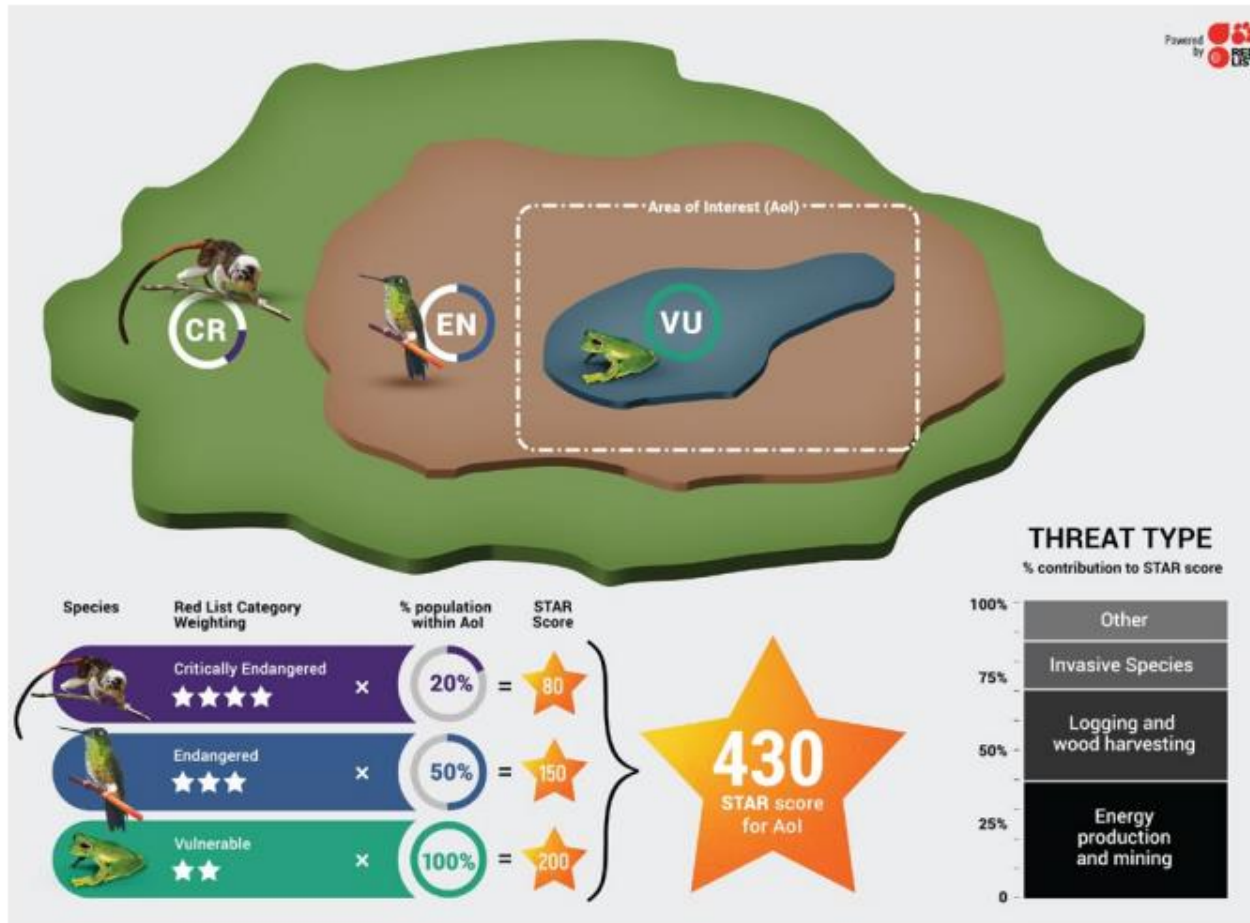
### % Summary of KBAs overlap



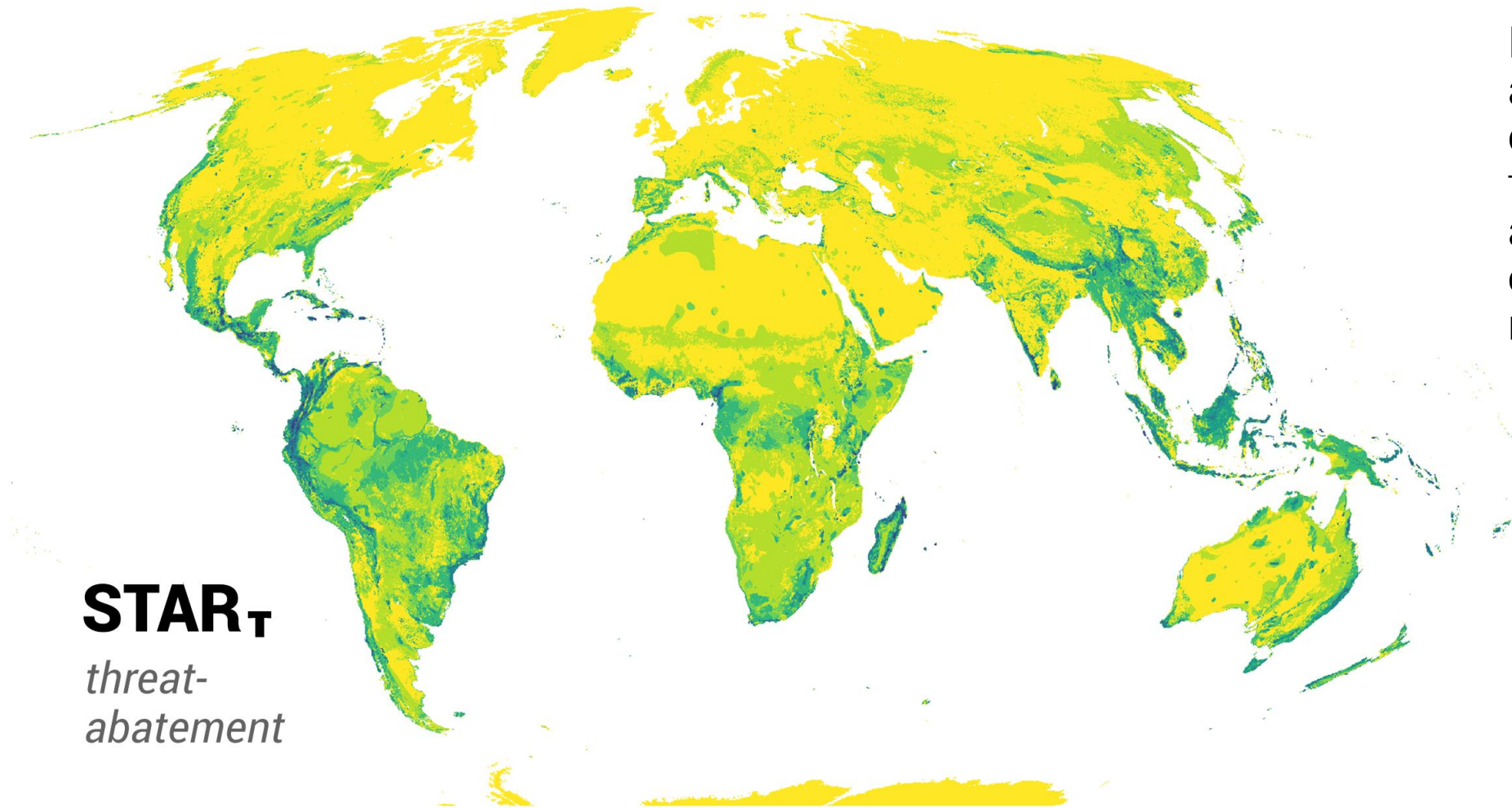
2 (100.00% of sites) are within 50.0 km of a Key Biodiversity Area.

0 (0.00% of sites) are not within 50.0 km of a Key Biodiversity Area.

# SPECIES THREAT ABATEMENT AND RESTORATION METRIC (STAR)



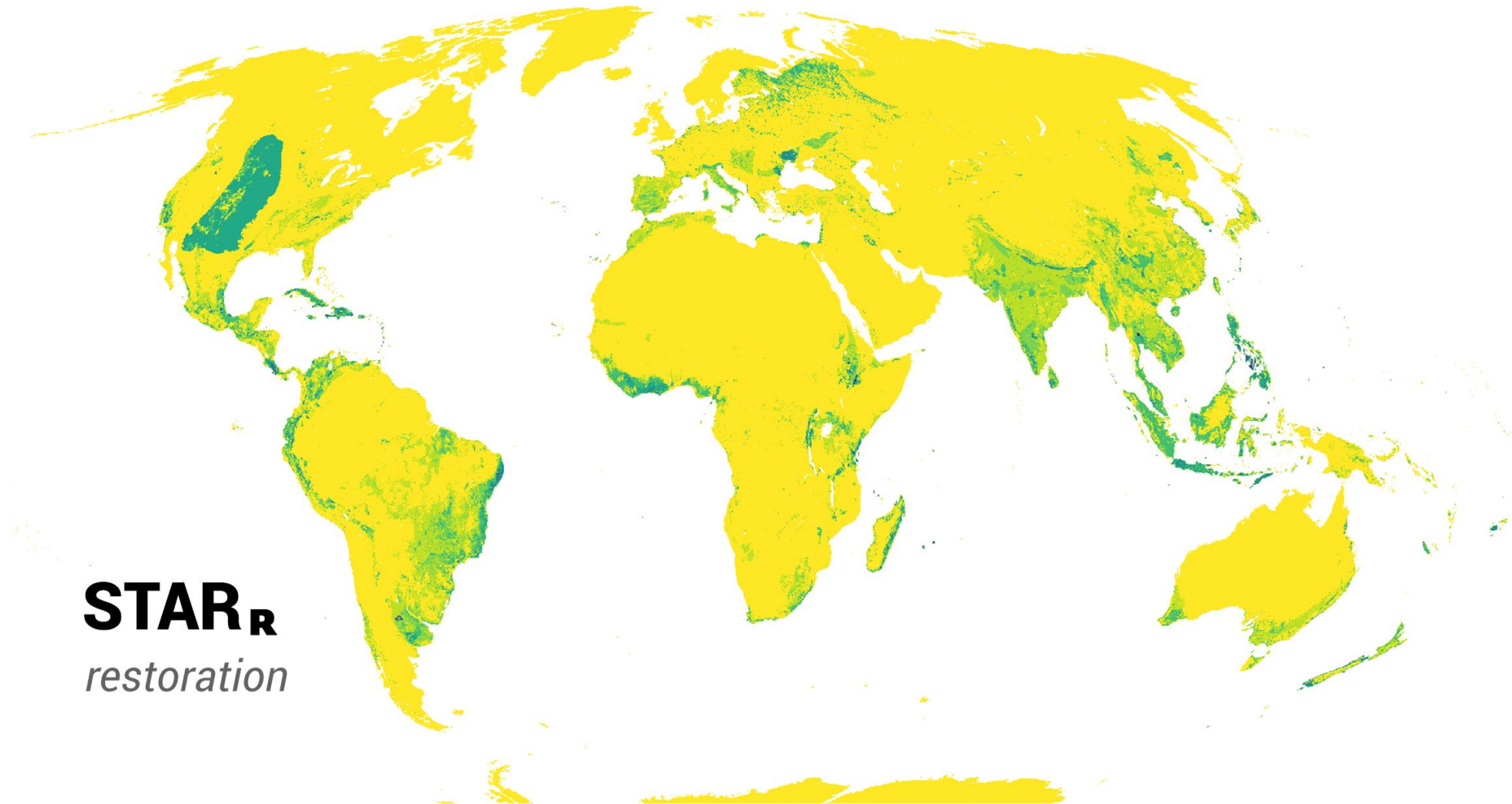
# STAR THREAT ABATEMENT



**STAR<sub>T</sub>**  
*threat-*  
*abatement*

High scores indicate areas that currently contain many threatened species and a large proportion of individual species' ranges.

# STAR RESTORATION



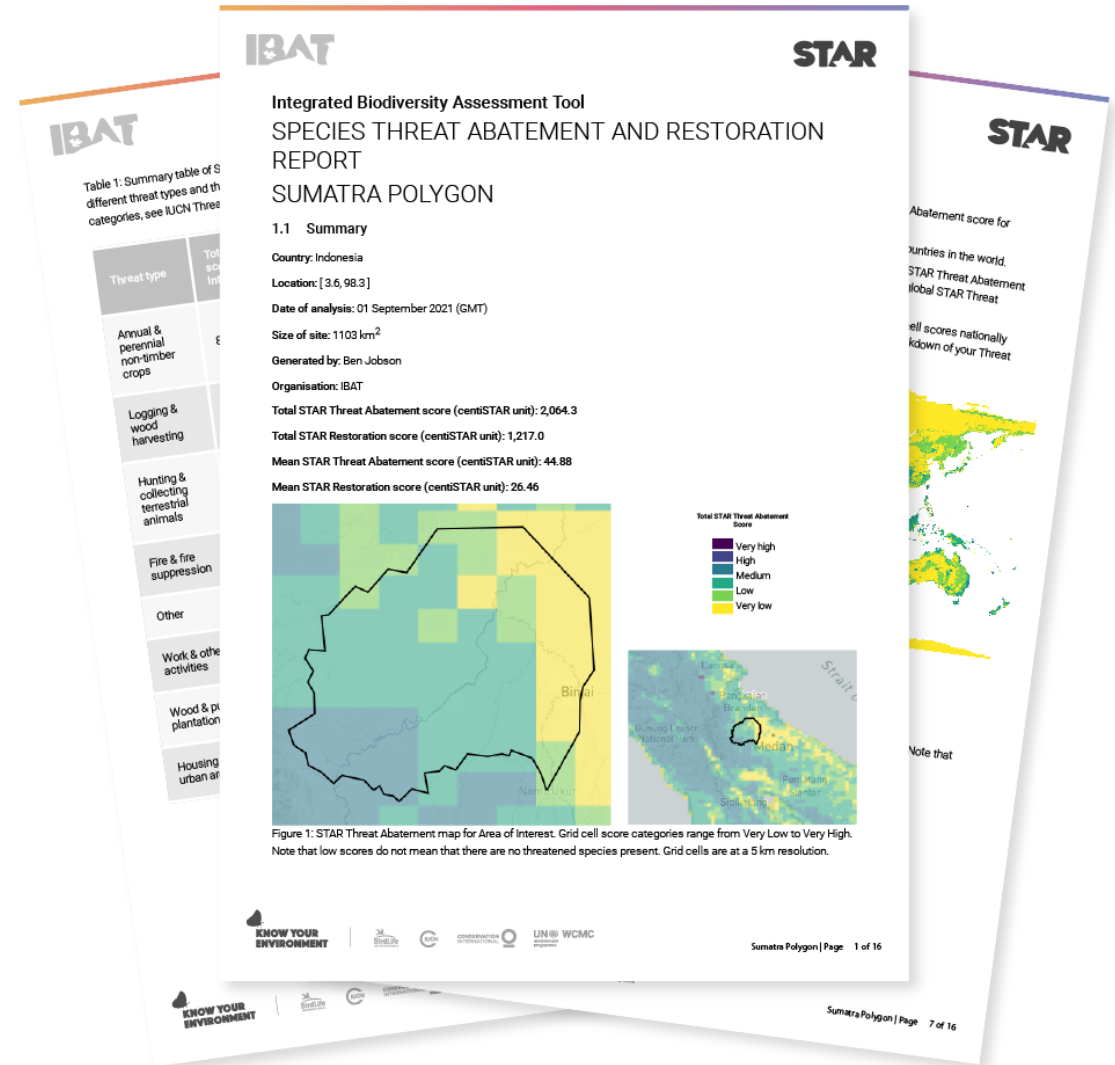
**STAR<sub>R</sub>**  
*restoration*

High scores indicate areas that previously supported high numbers of threatened species, a large proportion of individual species' ranges, and/or species that are severely threatened.

# IBAT REPORTS

## STAR

- Define your Area of Interest (project site)
- IBAT generates bespoke STAR report for your chosen location
- Report provides a detailed breakdown of the STAR values, threats and their relative significance at national and global scales



# Integrated Biodiversity Assessment Tool

The world's most authoritative biodiversity data for your world-shaping decisions

[Create account](#)

**STAR** STAR is now available in IBAT!



Last data update  
01/10/2021



## Demo

Bringing Data to Life

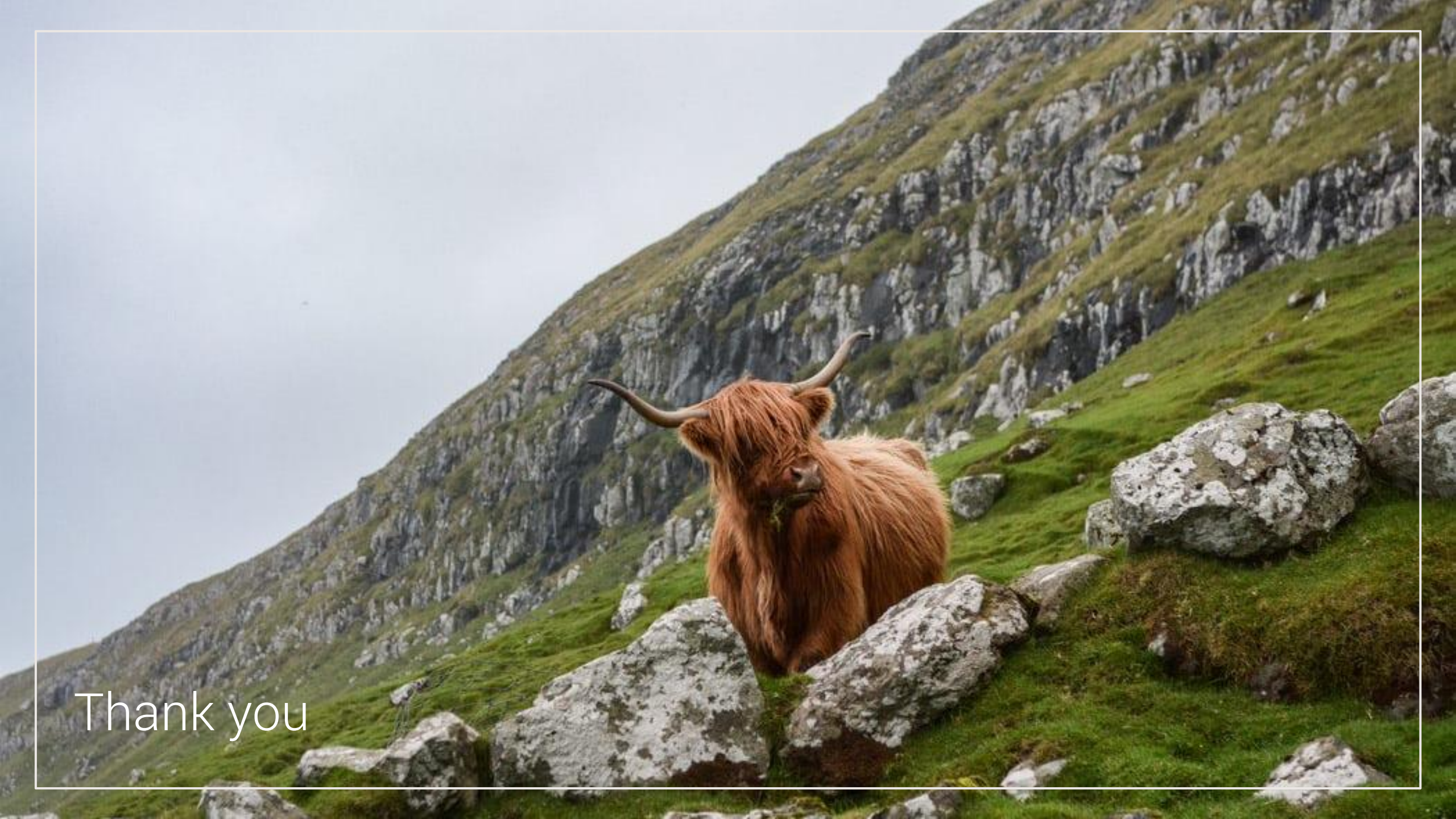
[Sample Reports](#)

# TRAINING OBJECTIVES

At the end of the training you will be familiar with:

- The Proteus Partnership, its objectives and what resources it makes available to you
- How to access Proteus support
- Key biodiversity concepts related to the resources available through Proteus
- Biodiversity data, namely those available through Proteus, how these are identified and how they can be used to deliver positive biodiversity outcomes





Thank you

# Biodiversity fundamentals and Proteus training

Engie



WCMC

proteus



**UN**   
**environment  
programme**

**WCMC**