



Proteus Quarterly Update

January to March 2022

UN 
environment
programme

WCMC

|  proteus

Contents

1. Highlights
2. Protected Areas
3. IBAT
4. Marine
5. Resources
6. Publications
7. Events

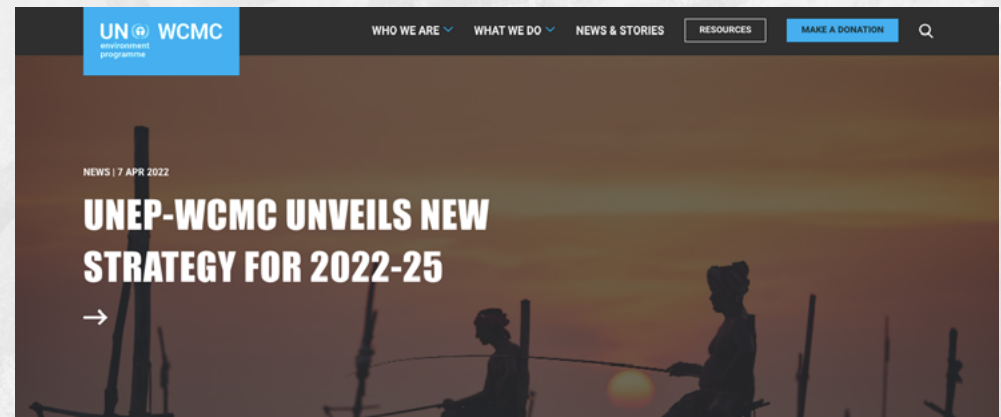



1.1 Highlights

Launch of UNEP-WCMC 2022-25 Strategy and New Website

Nature and People: UNEP-WCMC Strategy 2022-2025

- The Strategy sets out the UNEP-WCMC's priorities and focus for the next four years in its mission to develop knowledge and capacity for a nature-positive world.
- The Strategy has been designed to deliver UNEP-WCMC's contribution to major United Nations' programmes on nature and sustainable development, including the [UNEP 2022-2025 Term Medium Term Strategy](#), the [UN Decade on Ecosystem Restoration](#) and the [post-2020 global biodiversity framework](#), expected to be adopted at the UN Biodiversity Conference in Kunming, China later this year.



 Access the [2022-25 Strategy](#) and [Website](#)



1.2 Highlights

Resumed sessions of the Convention of Biological Diversity

Tasked with further developing the post-2020 global biodiversity framework, the resumed sessions were held in Geneva, Switzerland between 14 - 29 March 2022.

- These milestone discussions represent the first time that text on the post-2020 global biodiversity framework has been negotiated by Parties. It was decided that further negotiations were required to progress the framework ahead of COP15-part 2 and meetings have been scheduled for 21 – 26 June 2022, in Nairobi Kenya.
- The [Business for Nature Coalition](#) convened business focus days and bilateral meetings with Parties, supporting calls for greater ambition and for mandatory assessment and disclosure of impacts and dependences by business under draft Target 15. The presence of a progressive business voice did not escape the attention of negotiators.
- Some intersessional work has been agreed, including on the monitoring framework and indicators; a review of the long-term strategic approach to mainstreaming biodiversity; and options for resource mobilisation.



Point of Contact
Daniela Guaras

1.3 Highlights

UNEA-5.2 and UNEP@50

The second part of the Fifth session of the United Nations Environment Assembly (UNEA-5) took place from 28 February to 2 March 2022.

- [UNEA-5.2](#) concluded with [14 resolutions](#) to curb pollution, protect and restore nature worldwide including resolutions on Nature-based Solutions (NbS) for Supporting Sustainable Development, to End plastic pollution: Towards an international legally binding instrument, on environmental aspects of minerals and metals management, and a Science-Policy Panel to contribute further to the sound management of chemicals and waste and to prevent pollution.
- The NbS Resolution adopted the [definition of NbS](#), requested UNEP ED to carry out intergovernmental consultations, and called on UNEP to support implementation of NbS.
- UNEA-5.2 was followed by a Special Session, [UNEP@50](#), to commemorate the 50th anniversary of UNEP held from 3 - 4 March 2022.



Point of Contact
Daniela Guaras

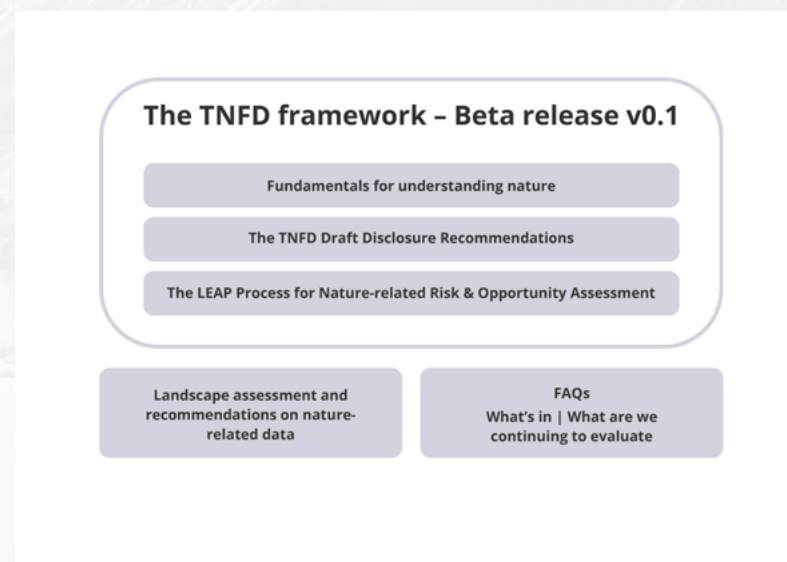
1.4 Highlights

TNFD beta disclosure recommendations released

The [Taskforce on Nature-related Financial Disclosures \(TNFD\)](#) released its first beta disclosure recommendations for consultation and piloting with market actors.

- The recommendations set out the information to be disclosed on risks and opportunities stemming from impacts and dependencies of organisations on nature.
- The [first beta version of framework](#) is open for market consultation via <https://framework.tnfd.global/> until 30 June 2022.
- There is emphasis on the consideration of an organisation's interface with nature, in particular low integrity ecosystems, high importance ecosystems or areas of water stress. Multiple datasets curated by UNEP-WCMC are proposed as reference sources (e.g. World Database on Protected Areas and the Critical Habitat Screening layer).

 Access the [TNFD Framework Beta v0.1](#)



Point of Contact
Sylvaine Rols

1.5 Highlights

Partnership Updates - Teck and Hydro

New Partner Announcement:

Teck and Hydro have joined the Proteus Partnership

- Teck is one of Canada's leading diversified natural resource and mining companies with operations and projects in North and South America.
- Hydro is a leading aluminium and energy company. Hydro is present in a broad range of market segments for aluminium, energy, metal recycling, renewables and batteries.
- This brings the total number of Proteus Partner to 16 companies.



1.6 Highlights

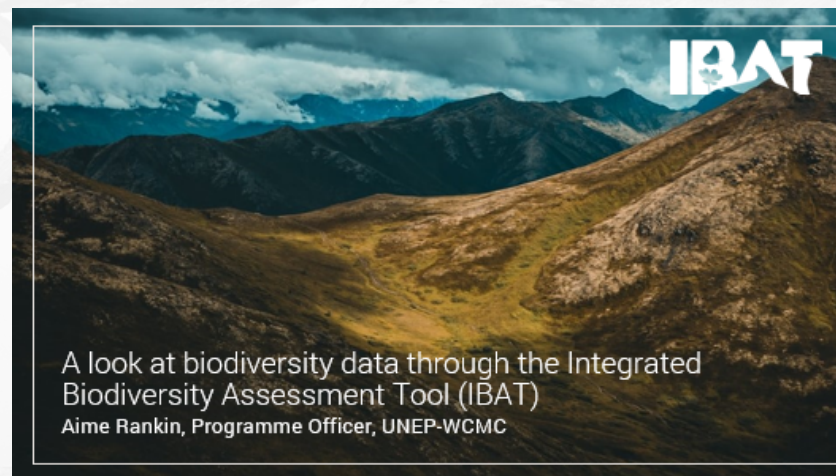
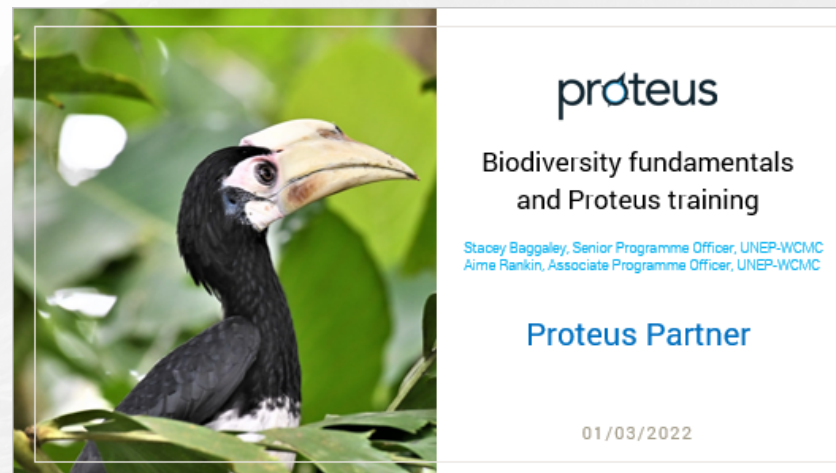
Ongoing support to Partner companies

In the first quarter of 2022, Proteus has provided a number of training sessions to Partner companies.

- In Q1, Proteus has delivered 11 training sessions with over 200 Proteus Partner staff trained in biodiversity and use of Proteus data and tools.
- The Proteus training flyer outlines our standard modules and options for bespoke training.
- Partners interested in training are invited to get in touch.

 Access [Proteus training flyer](#)

proteus



Point of Contact
Stacey Baggaley

2.1 Protected Areas

World Database on Protected Areas (WDPA)

Several data updates have been made to the WDPA, including:

- Guinea Bissau: 178 territories and areas conserved by Indigenous peoples and communities (ICCAs) from the sacred sites of the Boe in Guinea Bissau were submitted by the Chimbo Foundation.
- Armenia: A complete update of the national protected areas of Armenia, including the addition of two new protected areas, submitted by the Ministry of Nature Protection for Armenia.
- Europe: Natura2000 sites were updated.

Number of countries updated	33
Net increase in records	-691
Percent of records updated or validated	10%



Point of Contact
Jessica Stewart

2.2 Protected Areas

World Database on Protected Areas (WDPA)

Other updates: 2021 reporting, capacity building, OECMs.

- Co-hosted a workshop alongside the IUCN and CBD Secretariat to discuss potential protected area effectiveness indicators. Held twice, a total of 347 participants joined representing CBD Parties, Indigenous peoples and local communities, and protected area/OECM experts.
- Under the BIOPAMA Project, UNEP-WCMC and the Caribbean Regional Observatory, the University of the West Indies, developed an agreement to strengthen the current collaborative work on protected areas in the region for the next 5 years.
- Supported by the Bezos Earth Fund, UNEP-WCMC has begun working with the national Governments of 7 countries in the Congo Basin and Tropical Andes to recognise potential other effective area-based conservation measures (OECMs).
- Delivered capacity building training on database best practices and the WDPA to the Ministry of Environment of Moldova and its associated agencies.

Where are you located?



Point of Contact
Jessica Stewart

3.1 IBAT



New functionality

Temporary access functionality for consultants or temporary staff

- This new functionality allows organisations to add consultants for a set time period in line with project deadlines and extend expiration at any time. This functionality can be accessed by admins when managing users or adding new users. When an account expires it will be automatically made 'inactive'.
- Reminder emails will be sent to the account admin and consultant one week prior to expiry.

IBAT Resources

- Users can now find helpful information on all the datasets through IBAT Resources including user manuals, guidelines, standards and information on Red List categories and criteria.

joe.bloggs@consultant.org

Expiration date (optional for granting temporary access)

00/mm/yyyy

Active

Admin

Cancel Save

Resources

Tutorials Webinars Briefing notes Annual reports STAR Additional resources

WDIR Manual

Use Manual for the World Database on Protected Areas and world database on other effective area-based conservation measures 1.0

Guidelines for Applying Protected Area Management Categories

Guidelines for Applying Protected Area Management Categories

Access [IBAT](#)



Point of Contact
Edward Ellis

3.2 IBAT




KBA update – Changes to transboundary sites

In accordance with the KBA Standard, KBAs that cover two or more neighbouring countries are considered as one single transboundary site if they have been assessed as a single entity. Previously, transboundary sites like these were stored as two or more adjacent KBAs, split along the international boundary.

- The last KBA release (April 2022) merged nine pairs of neighbouring KBAs into nine new transboundary sites thus reducing the total number of KBAs slightly to 16,356.



 Access [IBAT](#)

proteus




Point of Contact
Edward Ellis

4.1 Marine

Global Coral Reef Monitoring Network Meeting in Monaco

- To strengthen Ocean+ position as a key collaborator for data provision and curation, UNEP-WCMC participated in the Monaco Ocean Week, and presented at the Global Coral Reef Monitoring Network Data Sharing & Data Standards Workshop.
- Through this continued engagement with habitat monitoring programmes, scientists, and government institutions, Ocean+ remains relevant as a data platform.
- Negotiations with both GCRMN and the Allen Coral Atlas continue to update the Global Distribution of Coral Reefs dataset.



 Access [Ocean+](#)

 proteus

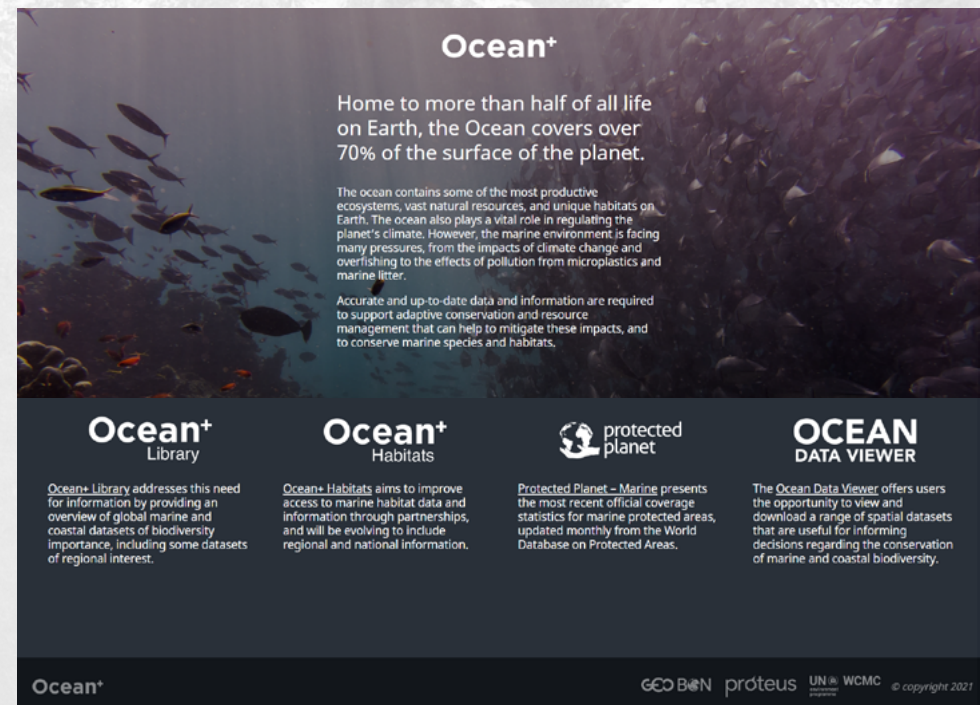



Point of Contact
Jasmin Upton

4.2 Marine

User research & data workshop at CEU

- To conduct user research and promote Ocean+, UNEP-WCMC gave a lecture and data workshop at Central European University. Workshop participants highlighted areas that could be improved, and information that could be communicated in a clearer way on Ocean+.
- To improve the usability of Ocean+ products, more user research will be conducted throughout Q2 and Q3 of 2022.
- We will build on these results in the coming months, and welcome any input from Proteus Partners!
- Please reach out to Sara Pruckner if you would like to have a conversation about how we can improve our services and products.



 Access [Ocean+ Habitat](#)



Point of Contact
Jasmin Upton

5.1 Resources

Technical Brief: The Area of Influence of site-based operations – Indirect Impacts

This technical brief provides a decision-making framework to capture potential indirect impacts in site-level biodiversity risk screening. It is part of a two-part series of technical briefs on impacts of site-based operations.

- This brief highlights the key pathways through which indirect impacts manifest, supported by evidence from scholarly literature to form an adequate definition of indirect impacts. It outlines the wider socio-economic and demographic factors that determine indirect impacts and also presents a decision-making framework to capture potential for indirect impacts when selecting appropriate buffers.



 Access the Technical Briefs ([Direct](#) and [Indirect](#))

proteus



Point of Contact
Jake Bedford

5.2 Resources

Data Forum: Species Threat Abatement and Restoration (STAR)

In this data forum, IUCN gave a presentation on how businesses can use STAR to support decision making. This was followed by a case study from Rio Tinto.

- The session provided the rationale and intended uses of STAR, how businesses can use STAR within IBAT to support decision making, recent developments and next stages of STAR as well as case studies.




proteus

Species Threat Abatement and Restoration (STAR)

Frank Hawkins - Policy Advisor, IUCN
Katie Shaw-Brown, Environmental Advisor, Rio Tinto
Ben Jobson - Programme Officer, IBAT

16 March 2022

 Access the recording [here](#)



Point of Contact
Aime Rankin

5.3 Resources

Explanatory Note: Migratory Connectivity in the Ocean (MiCO)

This explanatory note describes how Proteus Partners can access and use new features of the MiCO system.

- [The Migratory Connectivity in the Ocean \(MiCO\)](#) system provides models of the location, movements and important life history stages of marine migratory species such as whales and seabirds to inform their conservation.
- Proteus and Ocean+ have supported work to improve the MiCO system functionality – it now allows direct data downloads of area-use and network models, and PDF reports that summarise information for an area chosen by the user.
- This Explanatory Note describes how Proteus partners can access and use these new features.

 Access the [Explanatory Note](#)

UNEP-WCMC Explanatory Note January 2022 **Ocean+ UN@ WCMC proteus MiCO**

Migratory Connectivity in the Ocean (MiCO)

Now with updated functionality: how to access new features and download reports

Summary

- The *Migratory Connectivity in the Ocean (MiCO)* system provides models of the location, movements and important life history stages of marine migratory species such as whales and seabirds to inform their conservation.
- Proteus and Ocean+ have supported work to improve the MiCO system functionality – it now allows direct data downloads of area-use and network models, and PDF reports that summarise information for an area chosen by the user.
- This Explanatory Note describes how Proteus partners can access and use these new features.


What's new in the MiCO system?

Migratory Connectivity in the Ocean (MiCO)¹ is an extensive open-access system that generates standardised models of the locations of marine migratory species' routes, important life history stages (e.g. foraging and breeding 'nodes') and seasonality of occurrence.

Impacts and liabilities in the marine realm are not static. The MiCO System represents a state-of-the-art approach to developing fit-for-purpose, actionable knowledge on marine connectivity in the ocean and can support Proteus partners' understanding of operational and environmental risks.

Analyse network models offline

Using animal tracking data from around the world, MiCO produces network models composed of nodes (e.g. breeding sites) and corridors (connections between nodes; **Figure 1**) that visualize the distribution of migratory species. These models increase our understanding of how marine migratory species use and connect the ocean and can inform operational risk assessments. The updates to the MiCO system allow users to download network models and associated spatial data to better support offline analyses in any software environment.



¹Migratory Connectivity in the Ocean (MiCO) <https://mico.eco/>

² MiCO System help: <https://mico.eco/system/help/>

1

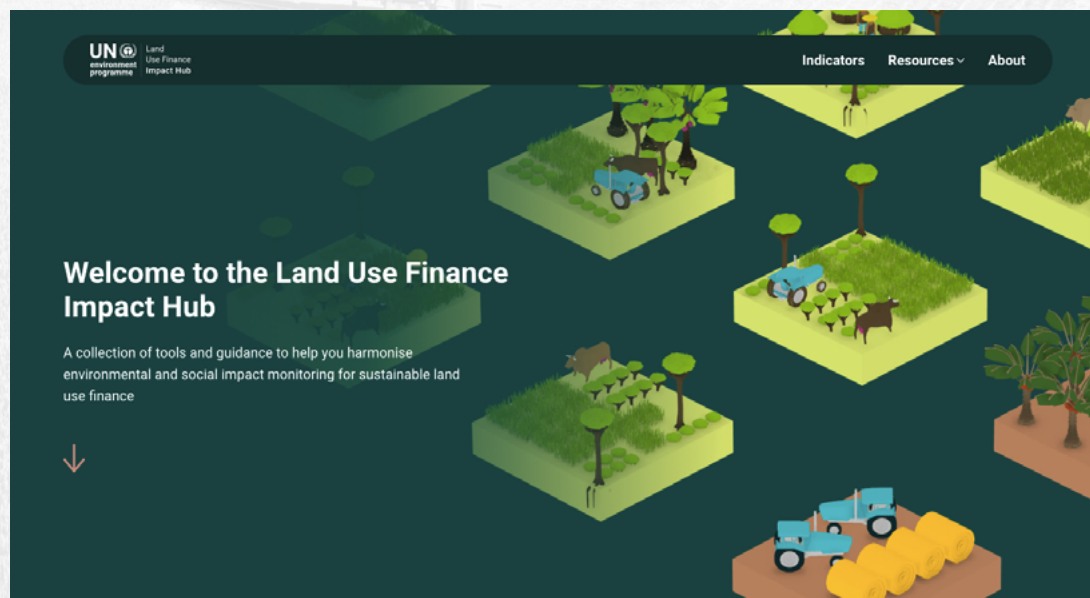


Point of Contact
Sara Pruckner

5.4 Resources

Launch of Land Use Finance Impact Hub

- [The Land Use Finance Impact Hub](#) and its [Positive Impact Indicators Directory](#) has been launched by UNEP Climate Finance Unit and UNEP-WCMC.
- The Impact Hub is a resource developed with and for impact funds and other financial institutions with the aim to shift private capital flows towards sustainable land use practices.
- The Impact Hub provides guidance and tools to strengthen environmental and social frameworks for sustainable land use investing by ensuring that funds are spent efficiently, any potential risks are curtailed, and impacts are monitored and reported against.



 Access the [Media Kit](#) and [Press Release](#)



6.1 Publications

- Impact Assessment for Corridors: From Infrastructure to Development Corridors
Juffe-Bignoli D, et al., (2021) – [Available here](#)
- Strengthening synergies: How action to achieve post-2020 global biodiversity conservation targets can contribute to mitigating climate change
De Lamo, X. et al. (2020) – [Available here](#)
- Are You Ready for Nature-related Disclosure? An assessment of readiness and expectations from the corporate market. UNEP-WCMC, Cambridge, UK.
UN Environment Programme (2022) – [Available here](#)
- Prioritising nature-related disclosures. Considerations for high-risk sectors. UNEP-WCMC, Cambridge, UK.
UN Environment Programme (2022) – [Available here](#)
- Nature in a haystack: Leveraging public nature-related data in disclosure frameworks. Recommendations based on an assessment for Costa Rica, India, Indonesia, Mexico and South Africa. UNEP-WCMC, Cambridge, UK.
UN Environment Programme (2022) – [Available here](#)

7. Events Calendar

Proteus Partner Events

- May** Technical Briefing Note on UN Decade on Ecosystem Restoration
- Jun** Proteus Annual Meeting
- Jun** Biodiversity Net Gain Session at PAM
- Jul** Data Forum on Ecosystem Integrity Index
- Aug** Horizon Scanning Webinar on IPBES9

External Events

- May** WEF Annual Meeting
- Jun** UN Ocean Conference 2022
- Jun** Stockholm+50 Conference
- Jun** 4th meeting of the Open-ended Working Group on the Post-2020 Global Biodiversity Framework
- Jun/Jul** Technical meeting on indicators for the post-2020 global biodiversity framework, Bonn, Germany
- Jun/Jul** World Biodiversity Forum
- July** IPBES9
- Q3 2022** CBD COP-15 (Part 2)