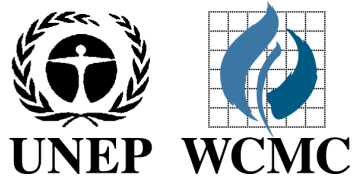


IBAT for Conservation Planning, its place as a tool to support NBSAPs

Proteus Partners Meeting 2011

Jon Hutton



Goal of this session

To provide an update on the Integrated Biodiversity Assessment Tool and explain its role in repatriating data and supporting the development of NBSAPs and associated data

Integrated Biodiversity Assessment Tool: IBAT

- IBAT is designed to mobilise conservation knowledge to inform decisions
- IBAT has been developed through a partnership between four major conservation organisations



- IBAT is made available to different users through tailored online portals

IBAT for Business, developed with and for business needs

IBAT for Business - The first of a suite of innovative, online tools developed with and for business to provide:

- A single source for globally recognized biodiversity information
- A user-friendly mapping application to support environmentally sound development decisions and reporting

Platinum Proteus partners get access to IBAT

- The individual IBAT for Business subscription is normally \$25,000
- All Platinum Proteus partners get access as part of their Proteus subscription rate

There are many benefits to Proteus Partners from using IBAT



WORLD-CLASS
PARTNERSHIP



UNLIMITED
DOWNLOADS



COMPREHENSIVE
ONLINE DATABASE



REAL-TIME
REPORTS



INTERACTIVE
MAPPING TOOL



ALIGNMENT WITH
CSR STANDARDS



Welcome

IBAT for business is an innovative tool designed to facilitate access to accurate and up-to-date biodiversity information to support critical business decisions. The tool is the result of a ground-breaking conservation partnership among BirdLife International, Conservation International, International Union for Conservation of Nature and United Nations Environment Programme World Conservation Monitoring Centre.

To learn more about how your company can become involved with IBAT, please follow the *Subscription options* link below. To purchase a subscription, please follow the *Subscribe* link to the right.



User name

Password

LOGIN

[Subscribe](#)

[Trial account](#)

[Forgotten password?](#)



[IBAT & Your Business](#)



[Data Behind IBAT](#)



[Partners Behind IBAT](#)



[Subscription options](#)



CONSERVATION INTERNATIONAL





Logout

You are logged in as unep-wcmc
Subscription expires 30/06/2011



Map Tool
Use the interactive mapping tool to find areas of interest and explore data on sites and species.

Country/Territory Profile
Jump to a summary of species and critical sites for biodiversity for each country or territory.

Latest News

- ICMM releases case studies on mining and biodiversity
- CBD side event
- Are you a Green Leader?

See more...

Quick Navigation

Latitude Longitude

Country/Territory



Learn More About
IBAT & Your Business >



Learn More About
Data Behind IBAT >



Learn More About
Partners Behind IBAT >



Learn How To
Contact Us >




the Core Data



Identification and Gap Analysis of Key Biodiversity Areas Targets for Comprehensive Protected Area Systems

Penny F. Langhammer, Mohamed I. Bakarr, Leon A. Bennun, Thomas M. Brooks, Rob P. Clay, Will Darwall, Naamal De Silva, Graham J. Edgar, Güven Eten, Lincoln D.C. Fishpool, Gustavo A.B. da Fonseca, Matthew N. Foster, David H. Knox, Paul Matiku, Elizabeth A. Radford, Ana S.L. Rodrigues, Paul Salaman, Wee Sechrest and Andrew W. Tordoff
Peter Valentine, Series Editor



The IUCN Red List of Threatened Species™

[::About](#) [::Initiatives](#) [::News](#) [::Photos](#) [::Partners](#) [::Sponsor](#)

Enter Red List search term(s)





- Home
- Map
- Country/Territory Profile
- IBAT & Your Business
- Data Behind IBAT
- Partners
- Contact Us

Search for

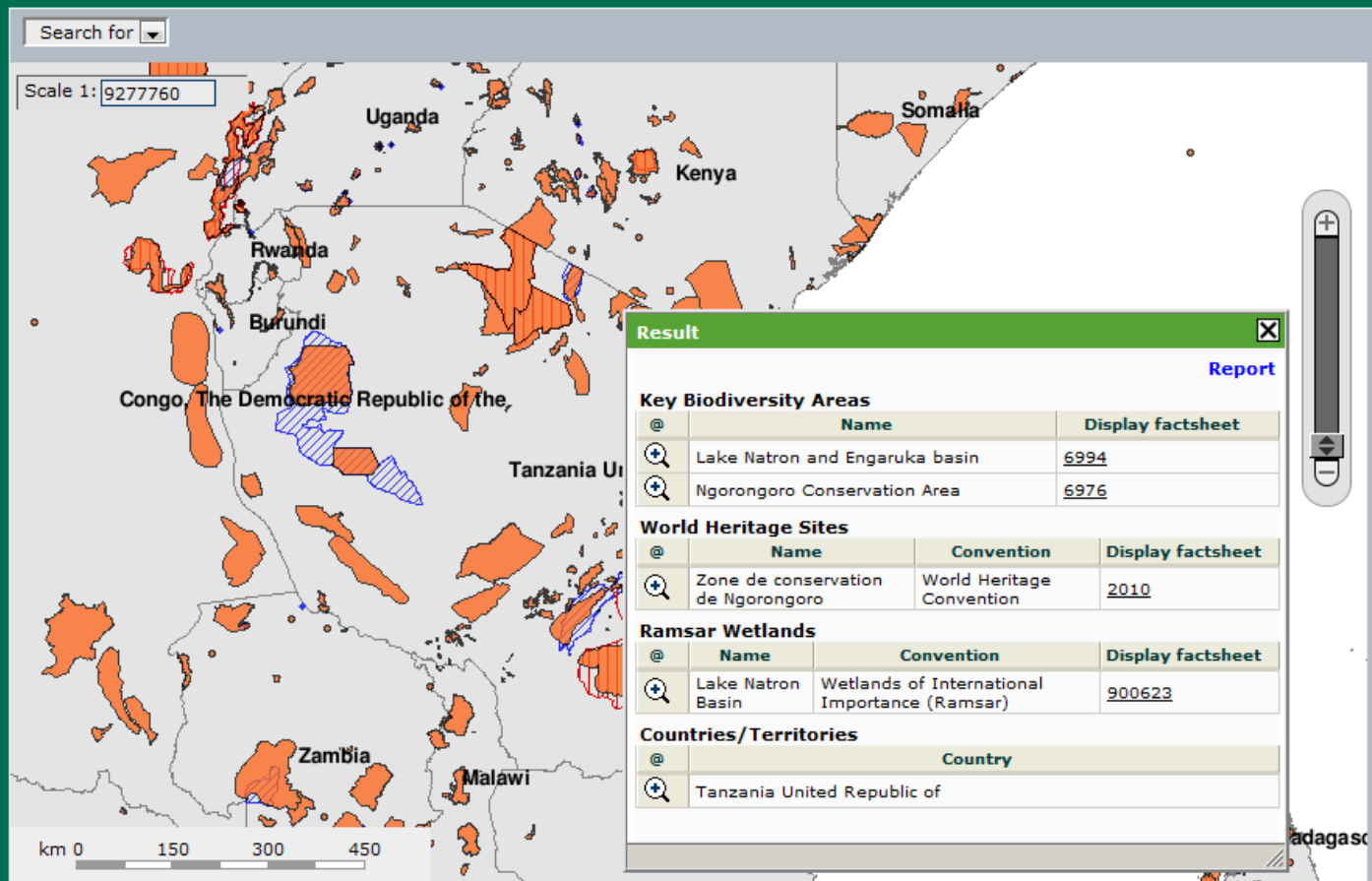
Scale 1: 130337500

km 0 2000 4000 6000

Layers Legend

- Completeness**
 - KBA Completeness
 - WDPA Completeness
- Important Areas for Biodiversity**
 - Key Biodiversity Areas
 - AZEs
 - Biodiversity Hotspots
 - HBWAs
 - Endemic Bird Areas
- Internationally Recognised Sites**
 - World Heritage Sites
 - Ramsar Wetlands
 - UNESCO MAB
 - Other Sites
- Nationally Designated Sites**
 - IUCN Category I-II
 - IUCN Category III-IV
 - IUCN Category V-VI
 - IUCN Category Unknown
- Globally Threatened Species Grid**





Layers Legend

- Completeness**
 - KBA Completeness
 - WDPA Completeness
- Important Areas for Biodiversity**
 - Key Biodiversity Areas
 - AZEs
 - Biodiversity Hotspots
 - HBWAs
 - Endemic Bird Areas
- Internationally Recognised Sites**
 - World Heritage Sites
 - Ramsar Wetlands
 - UNESCO MAB
 - Other Sites
- Nationally Designated Sites**
 - IUCN Category I-II
 - IUCN Category III-IV
 - IUCN Category V-VI
 - IUCN Category Unknown
- Globally Threatened Species Grid**



We also make data from IBAT available on a not-for-profit basis

- As a part of the UN system it is important that we provide data to governments and research
- We place commercial restrictions on this access
- We do this through another portal, **IBAT for Research and Conservation Planning**

The key goal of this tool is repatriate data, information and knowledge...

Data, information and knowledge is repatriated to national governments

- We target this to governments in developing economies
- This allows them to place national data in an international context
- It supports national government in developing National Biodiversity Strategy and Action Plans (NBSAPs)
- Emphasis on developing capacity and technical support at CBD regional workshops

NBSAPs: re-cap

National strategies, plans or programmes for the conservation and sustainable use of biological diversity, including how to integrate conservation and sustainable use of biodiversity into sectoral and cross-sectoral activities.

- 170+ countries have developed NBSAPs
- All require revision and updating
- By 2015, all Parties to CBD require adoption and implementation of policy instrument



ibat

FOR RESEARCH & CONSERVATION PLANNING

Integrated Biodiversity Assessment Tool

Logout

You are logged in as jon.hutton@unep-wcmc.org

- Home
- Map
- Country/Territory Profile
- IBAT & Conservation
- Data Behind IBAT
- Partners
- Contact Us



Quick Navigation

Latitude Longitude

Country/Territory



IBAT for research and conservation planning (IBAT R&CP) facilitates access to information about high priority sites for conservation – namely protected areas and key biodiversity areas. One of the primary users for this tool is government staff who are responsible for developing biodiversity strategies and planning documents as well as reporting on conservation implementation, using a broad range of data and indicators such as national coverage of protected areas. Many national governments will find this website useful for planning their conservation actions and priorities, for example, when undertaking gap analyses. In particular, a section on National Biodiversity Strategy Action Planning has been included to assist users who are responsible for reporting on their commitments to the Convention on Biological Diversity.



National Biodiversity Strategies and Action Plans

The purpose of this section is to introduce the IBAT tool for Research & Conservation Planning as a resource for countries to help inform the development or revision of National Biodiversity Strategies and Action Plans (NBSAPs), which outline actions for addressing threats to biodiversity. Assessing a country's current state of natural resources and biodiversity is a key action in the NBSAP process. Thus, having access to the best available sources of information is a critical step for developing these plans. Global, national and site level biodiversity data on this website can be used to help inform conservation planning and reporting on commitments that have been made by national governments to the Convention on Biological Diversity. Links to documents, websites, and other information sources are included in this section to support the NBSAP process.

Placing national data into the international context is important

This allows national governments to set national priorities with due consideration to their international impacts, particularly relating to:

- World Heritage Sites
- Ramsar Sites
- IUCN Red List Threatened Species
- KBAs
- ... And funding mechanisms

GEF Biodiversity Index



- Index ranges from 1.5 (minimum) to 68 (maximum, Brazil)
- Funds are allocated based on index
- Helps bring attention to international priorities

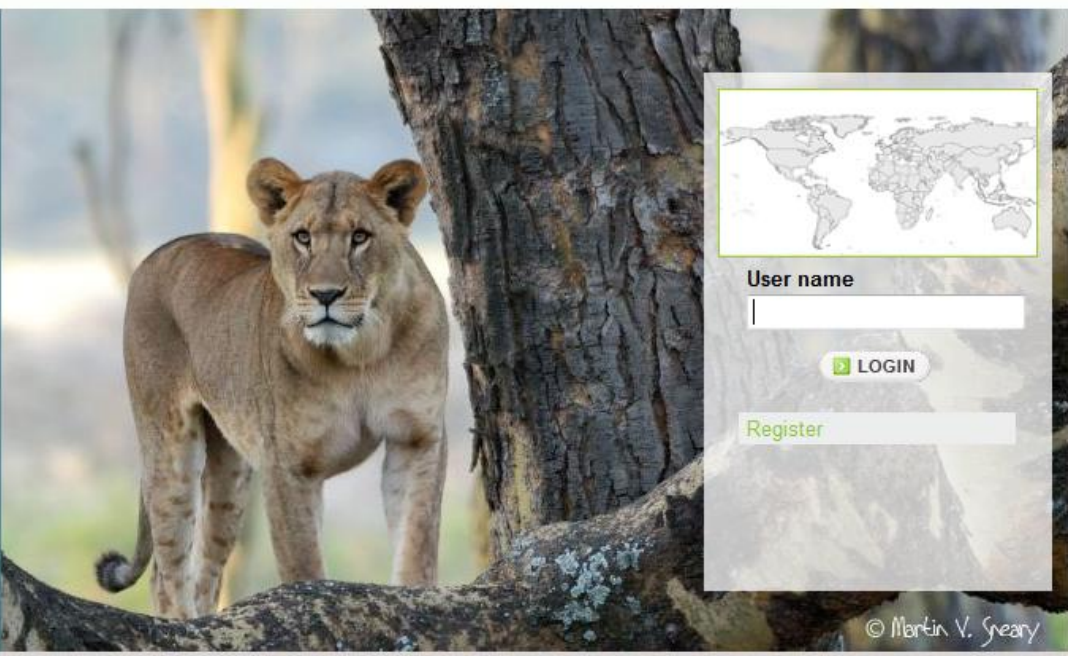


Welcome

IBAT for Research and Conservation Planning is an innovative tool designed to facilitate access to a range of global and national data layers, such as protected area boundaries, biological information about habitat and species diversity indices, and key areas for biodiversity, which can be useful for research and conservation planning purposes.

The tool is the result of a ground-breaking conservation partnership among BirdLife International, Conservation International, International Union for Conservation of Nature and UNEP World Conservation Monitoring Centre and is made possible by a diverse set of data providers, users and funders in government, business and civil society from over 200 countries and territories.

To access IBAT, please follow the Register link to the right.



User name

LOGIN

Register

© Martin V. Szeary

IBAT & Conservation

Data Behind IBAT

Partners Behind IBAT

Getting involved





Partners

Quick Navigation

Latitude Longitude

Country/Territory



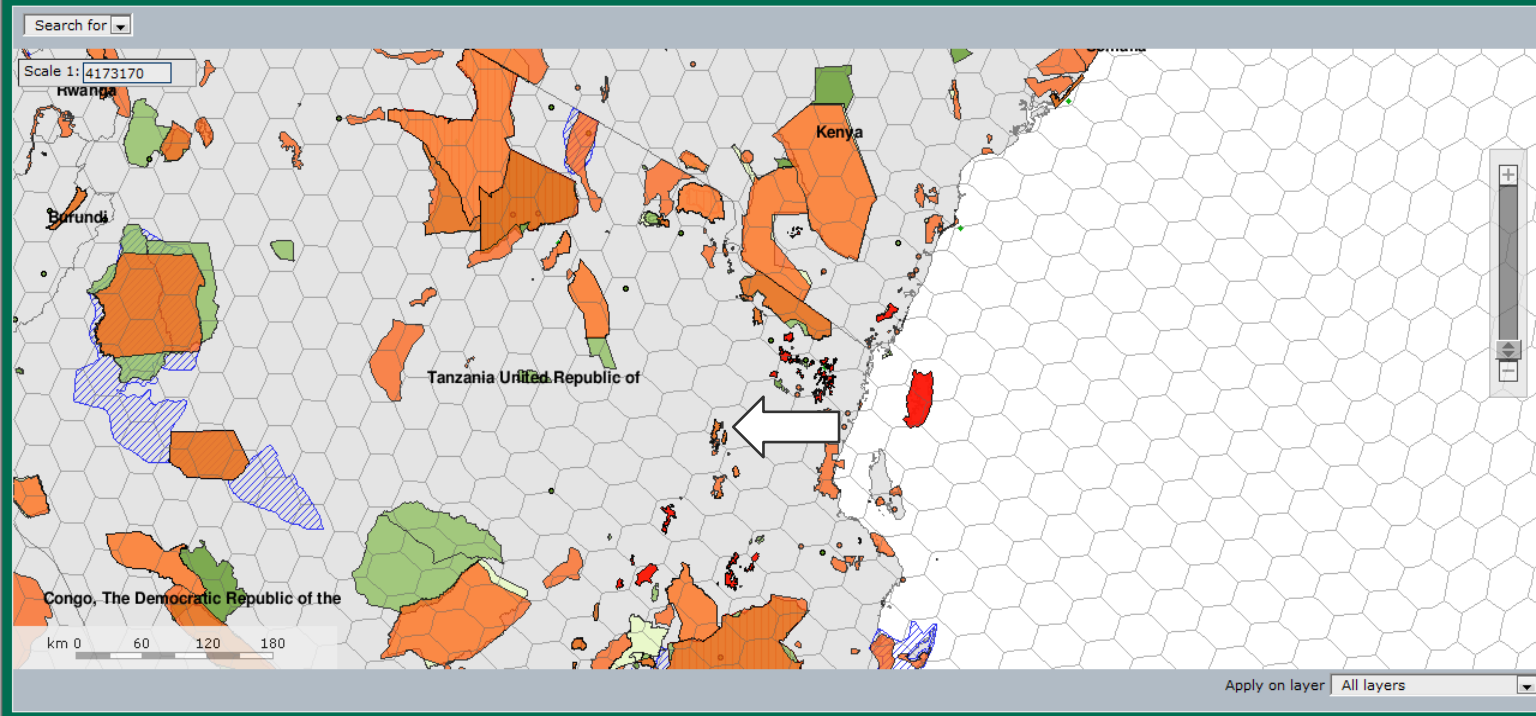
The following corporate partners have played a key role in the development of IBAT by participating in the Corporate Consultative Group and providing guidance and feedback during the development stages as well as providing critical funding to the project.



Ongoing support of IBAT and the data development necessary to maintain and expand this initiative has been provided by the following companies through their participation in the Proteus Partnership:




Additional support has been provided by the United States Department of Energy and Gold Reserves, Inc.



Layers Legend

- Endemic Bird Areas
- Internationally Recognised Sites**
 - World Heritage Sites
 - Ramsar Wetlands
 - UNESCO MAB
 - Other Sites
- Nationally Designated Sites**
 - IUCN Category I-II
 - IUCN Category III-IV
 - IUCN Category V-VI
 - IUCN Category Unknown
- Globally Threatened Species Grid**
 - Species grid
- Administrative Data**
 - Countries/Territories
 - Administrative boundaries
 - Cities
 - Towns
 - Shaded relief
 - Gazetteer



Search for [v]

Scale 1: 4173170

hwanga

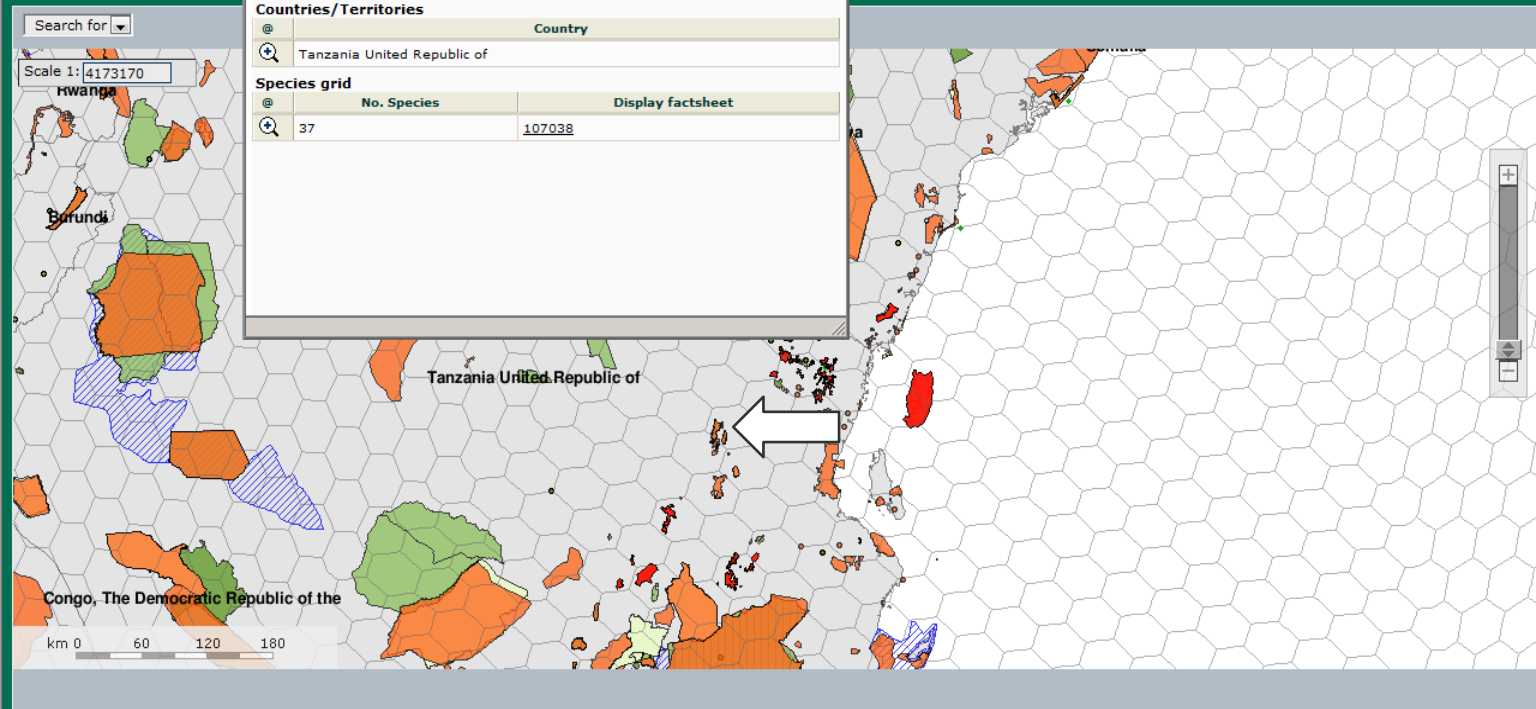
Result

Countries/Territories

Country
Tanzania United Republic of

Species grid

No. Species	Display factsheet
37	107038



Layers Legend

- Endemic Bird Areas
- Internationally Recognised Sites**
 - World Heritage Sites
 - Ramsar Wetlands
 - UNESCO MAB
 - Other Sites
- Nationally Designated Sites**
 - IUCN Category I-II
 - IUCN Category III-IV
 - IUCN Category V-VI
 - IUCN Category Unknown
- Globally Threatened Species Grid**
 - Species grid
- Administrative Data**
 - Countries/Territories
 - Administrative boundaries
 - Cities
 - Towns
 - Shaded relief
 - Gazetteer



Caucasus pipeline



Marxan

Informing Conservation Decisions Globally

On This Site

[Marxan R & D](#)

[Getting Started](#)

[Downloads](#)

[Case Studies](#)

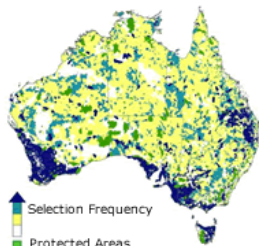
[Publications](#)

[Teaching & Learning](#)

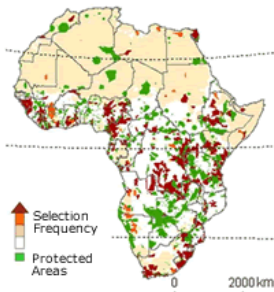
[Community](#)

[Sitemap](#)

Select a quick link:



Klein et al. 2008a



Rondinini et al. 2006

Marxan is freely available conservation planning software.

It provides decision support to a range of conservation planning problems, including:

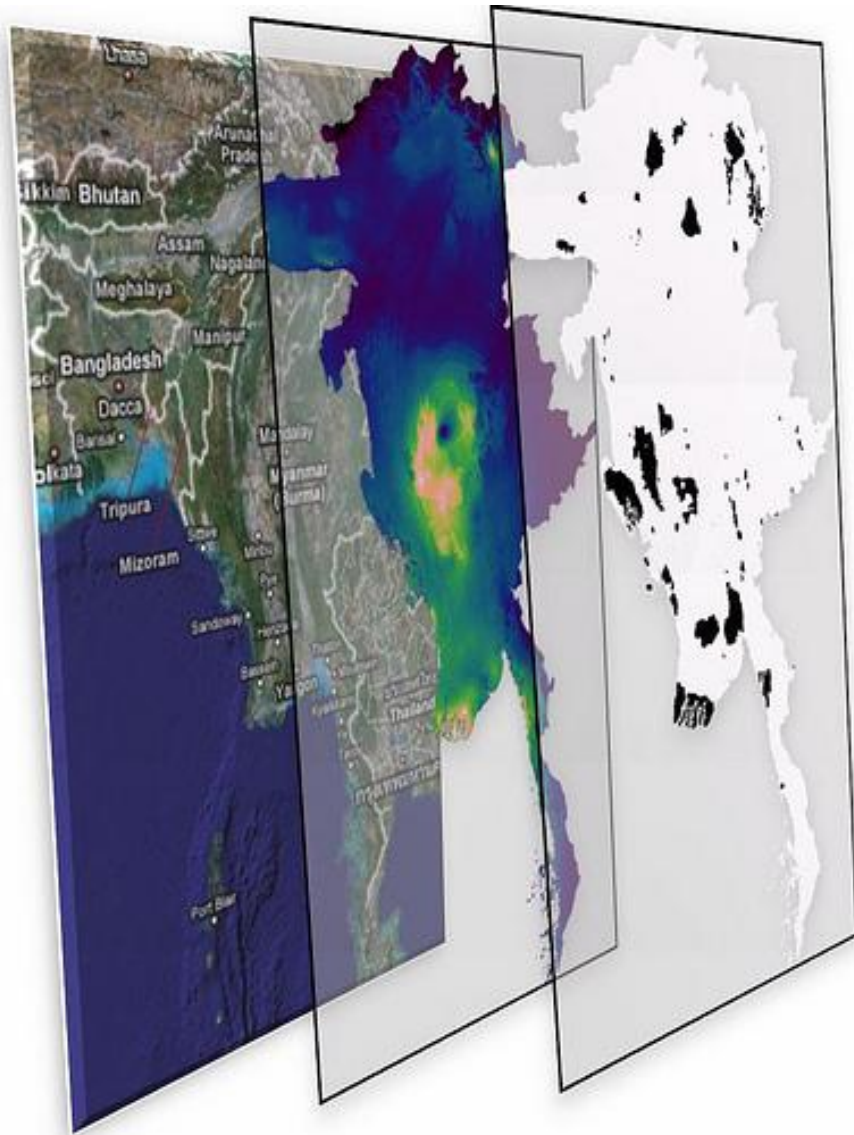
- the design of new reserve systems
- reporting on the performance of existing reserve systems
- developing multiple-use zoning plans for natural resource management

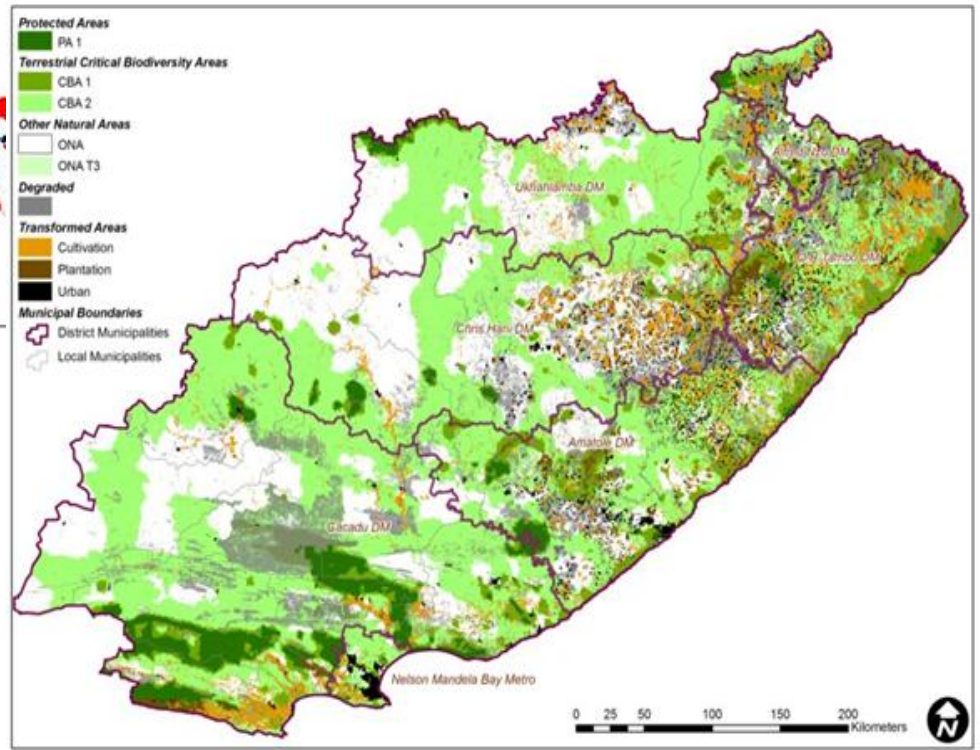
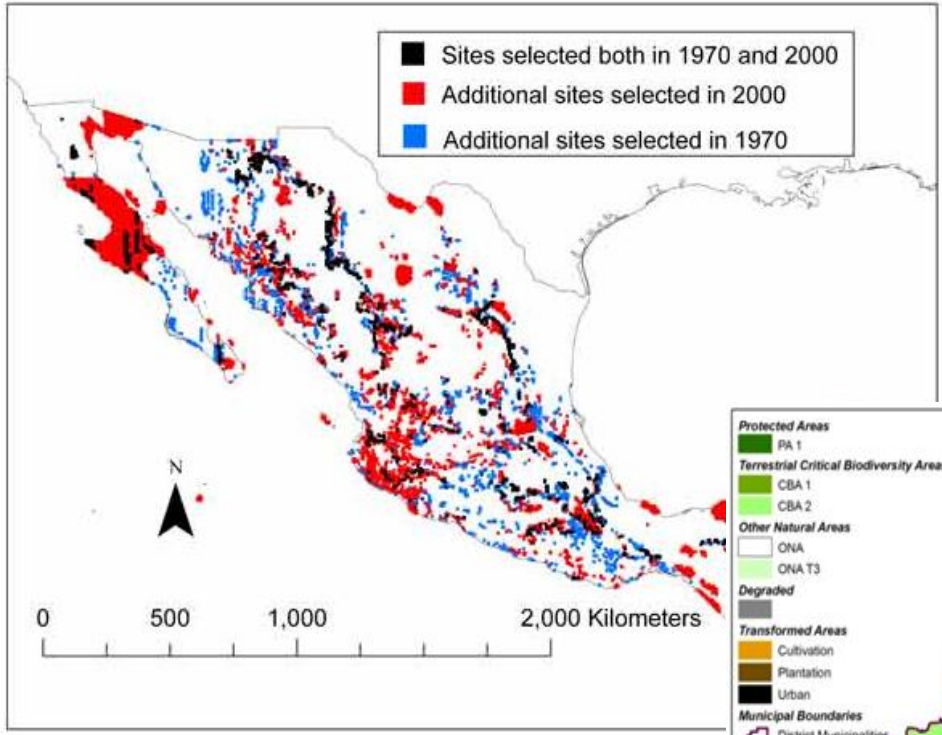
What makes Marxan the most widely used conservation planning software in the world?

Marxan is flexible- it can be applied to a wide range of problems such as reserve design and natural resource management in terrestrial, freshwater, and marine systems.

Marxan is efficient and repeatable- it provides many good solutions to complex problems, providing a number of options and encouraging stakeholder participation.

These features provide users with decision support to achieve an efficient allocation of resources across a range of different uses.

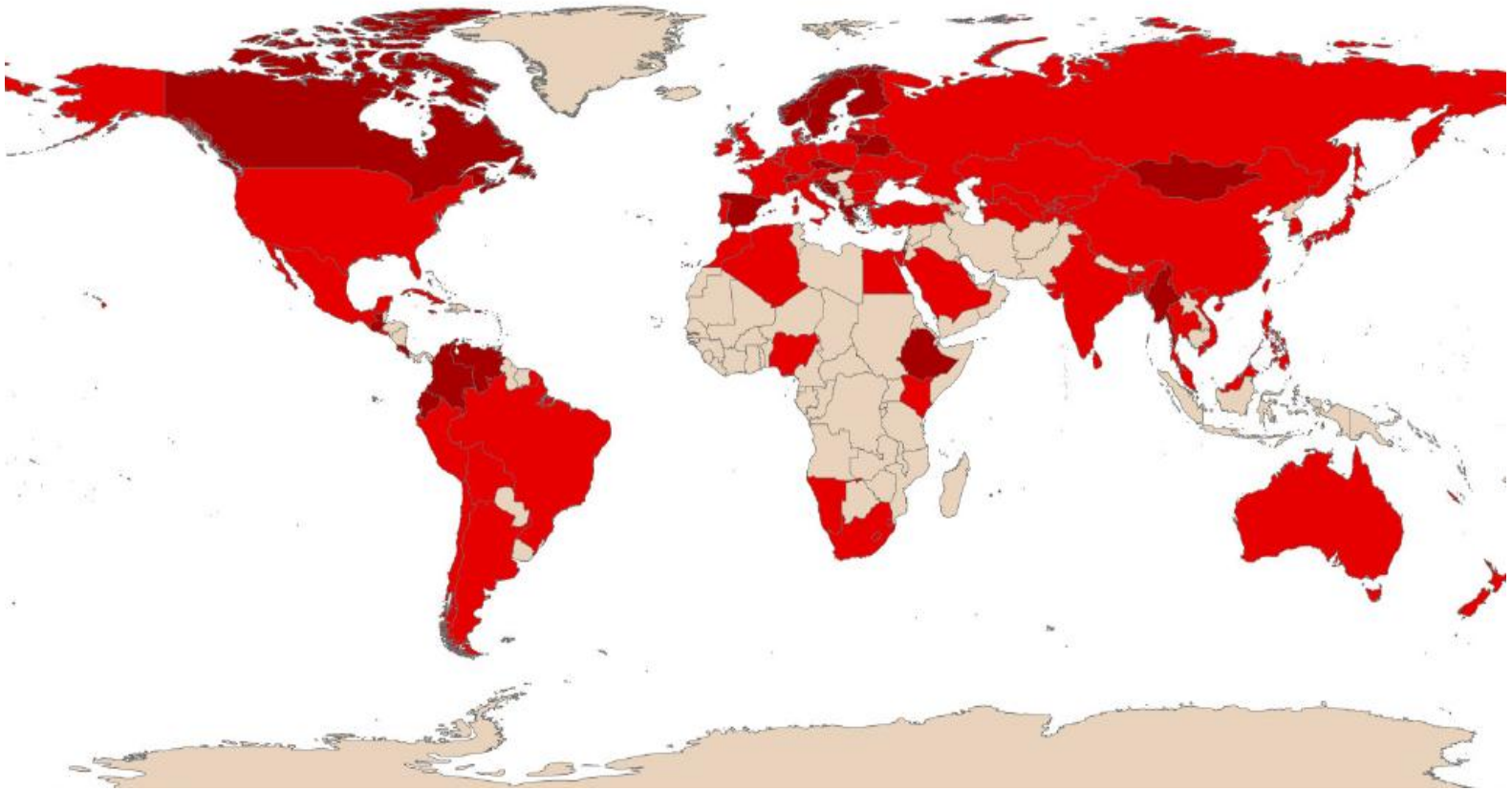




Enhancing the role of IBAT is central to our new strategic plan

- It repatriates raw and synthesized biodiversity data and places it directly into the hands of decision makers in national government
- It builds our capacity development role
- It puts ourselves at the heart of sub-global data issues and helps build the new national-level data portal

A watching-brief: National Red List data



Made possible the Proteus Partners!



Logout

You are logged in as jon.hutton@unep-wcmc.org

www.ibat-alliance.org/ibat-conservation

