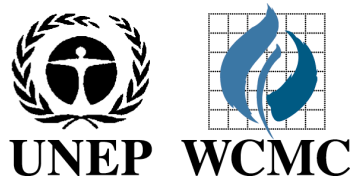


Sub-global Assessments, TEEB & IPBES: UNEP-WCMC's Role

Proteus annual meeting, Stavanger 15th June

Claire Brown



The Goal of this Presentation

To provide a briefing on the latest initiatives to assess and value ecosystems and their services and UNEP-WCMC's role in these initiatives

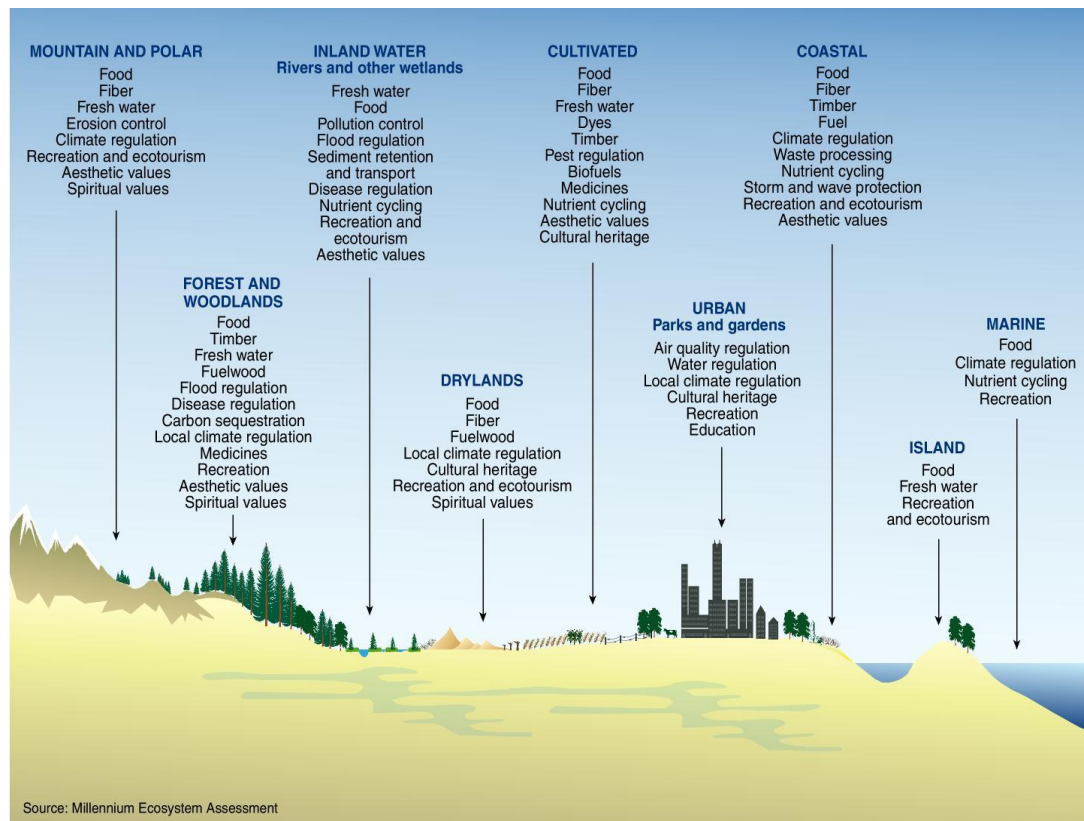
What are ecosystem services?

The benefits people obtain from ecosystems.

- Supporting services – soil formation
- Regulating services – flood and climate regulation
- Provisioning services – food and water
- Cultural services – non-material benefits



What is an Ecosystem Assessment?



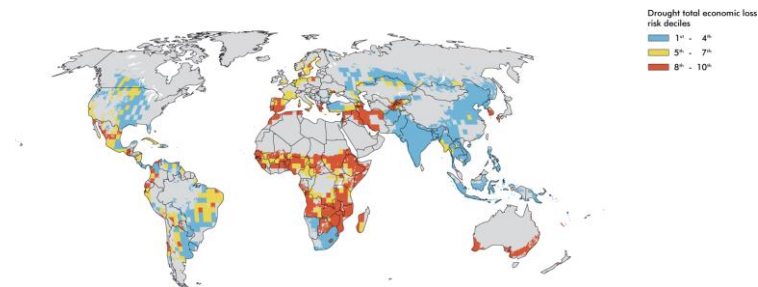
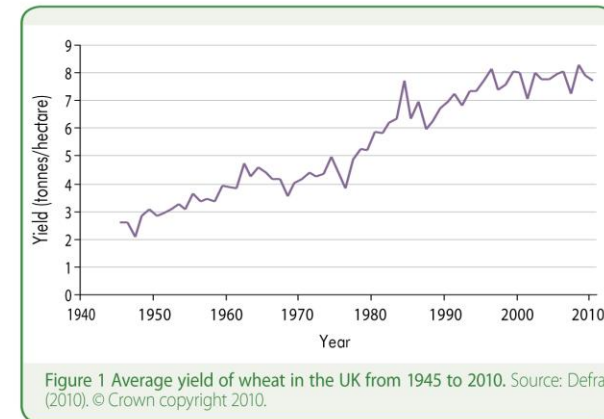
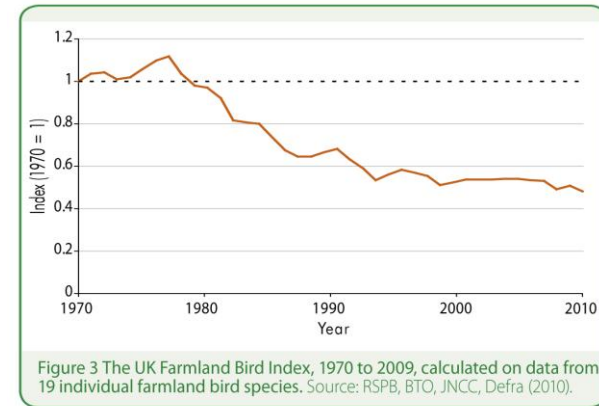
- Links ecosystems, services and people
- Connects different sectors
- Communicates complex information
- Is not primary research!

What is the role of assessment in decision-making?

- Play numerous role:
- Responding to information needs (credible & robust)
- Highlighting trade-offs between decision options
- Examine plausible futures
- Engage different stakeholders including decision-makers of different levels

What information does an assessment generate?

- Status and trends in ecosystems and services
- Understanding of drivers of change
- Valuation (economic and non-economic)
- Plausible futures
- Response options



How is this information used in decision-making?

- To assist in understanding the values that society hold in relation to ecosystems and services
- To support current policies.
- Contribute to a review of current policy and practices
- Contribute to new policies (risk analysis)
- Be used in further trade-off analysis for different services for an area

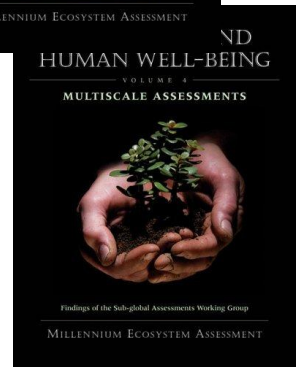
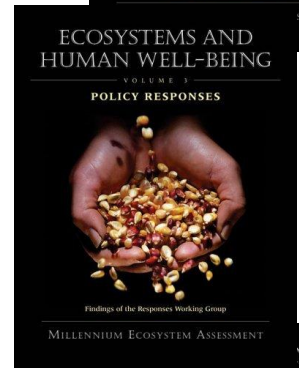
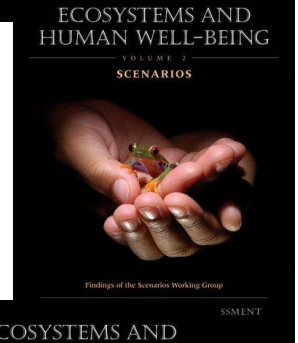
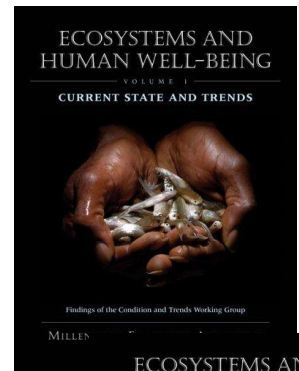
A Short History.....

2000-2005 Millennium Ecosystem Assessment

2005 – Increase use in scientific literature & decision-making

2007-2009 The Economics of Ecosystems and Biodiversity

2011 – The Intergovernmental Platform on Biodiversity and Ecosystem Services



The Economics of Ecosystems and Biodiversity (TEEB)

Provided a series of reports:

- for ecologists and economists (TEEB Do)
- for international and national policy makers (TEEB D₁)
- for local and regional policy (TEEB D₂)
- for business (TEEB D₃)
- for citizens (TEEB-D₄)

TEEB Phase III - 2011

Will focus on the following three areas:

- Policy
- Business
- Communications/outreach

The objective :

to mainstream TEEB beyond the biodiversity policy sphere while ensuring scientific credibility.

Many national studies have begun

TEEB – UNEP-WCMC's Role

- Providing a platform for sharing and the exchange of experiences.

To strengthen the **science-policy interface** for biodiversity and ecosystem services for the conservation and sustainable use of biodiversity, long-term human well-being and sustainable development.

- 2008-2010 Ad-hoc intergovernmental and multi-stakeholder meetings
- June 2010 Countries reached agreement on the establishment of IPBES
 - Busan Outcome
 - knowledge generation, assessment, policy tools & capacity building
- Establishment of IPBES supported by UN General Assembly (16/162) and UNEP Governing Council (Decision 26)
- First Plenary over two sessions to establish governance and work programme.

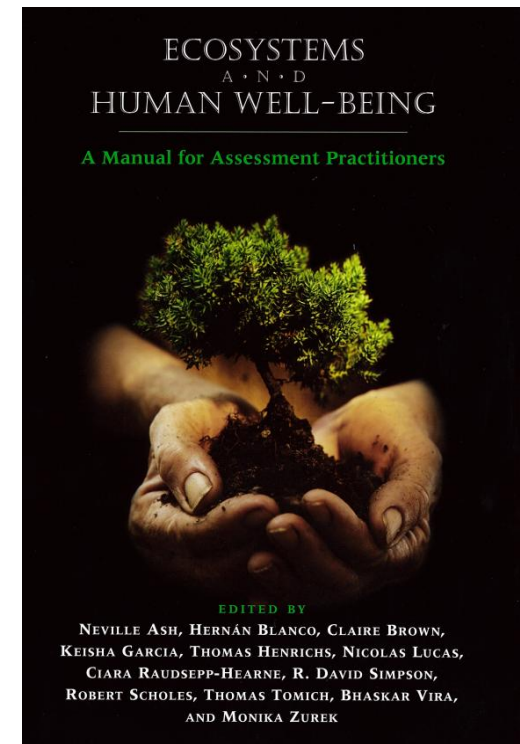
IPBES – UNEP-WCMC’s role is supporting:

- UNEP – development of information document - e.g. gap analysis & use of indicator
- UNEP - development of documents on the work programme – Capacity Building & Assessments
- Countries - development of information documents and advice - e.g. Norway and Brazilian hosted workshop



Ecosystem Assessments – UNEP WCMC's role

- Hosted the State and Trends Working Group for the MA
- Lead the development of the MA Methods Manual
- Working with countries and regions to develop capacity – e.g Israel, South Africa, West Africa and Latin America
- Coordinated the UK National Ecosystem Assessment - 2nd June 2011
- Hosting the secretariat for the SGA Network



What is the SGA Network?

A network of practitioners to share lessons and experiences

- Coordinated by a Secretariat
- Expanded network – include national TEEB studies
- Link expertises and needs
- Regional hubs
- Develop capacity
- Provide technical back stopping

What does this mean for the Private Sector?

- An opportunity for the Private Sector to engage in the debate on our natural capital
- Potential findings from assessments may impact upon the way business is conducted and regulated
- Working with UNEP-WCMC
 - Opportunity to access latest data, methods and tools
 - Briefings on what decisions will mean for the private sector