

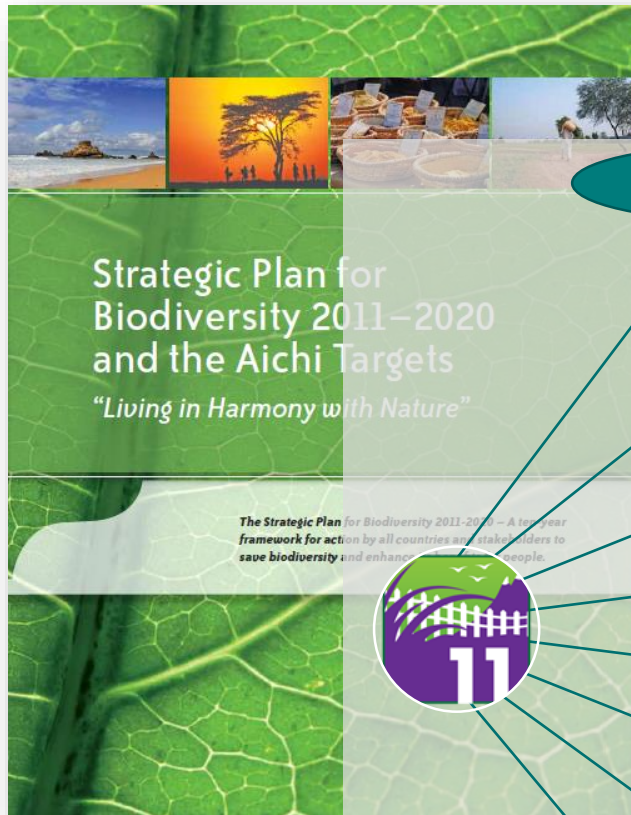


# **New ambitions for Area Based Conservation**

**Naomi Kingston, Head of Protected Areas Programme, UNEP-WCMC**

***[naomi.kingston@unep-wcmc.org](mailto:naomi.kingston@unep-wcmc.org)***

# Global goals



17% terrestrial areas

10% marine areas

Mapped

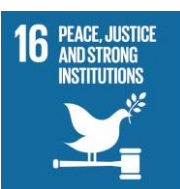
Important areas

Effective

Equitable

Representative

Connected



# New Ambitions

## Half-Earth or Whole Earth? Radical ideas for conservation, and their implications

BRAM BÜSCHER, ROBERT FLETCHER, DAN BROCKINGTON, CHRIS SANDBROOK  
WILLIAM M. ADAMS, LISA CAMPBELL, CATHERINE CORSON, WOLFRAM DRESSLER

ROSE  
ELIZABETH  
**Conservation Letters**  
A journal of the Society for Conservation Biology

Open Access

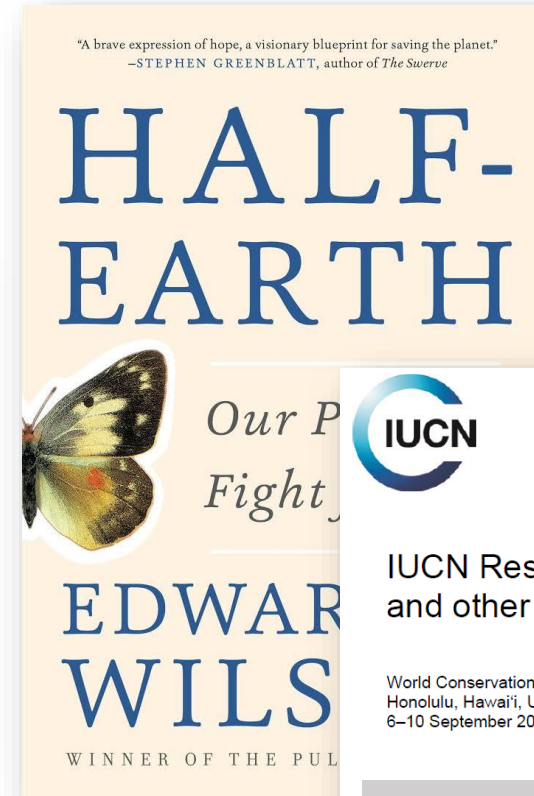
### LETTER

#### Shortfalls and Solutions for Meeting National and Global Conservation Area Targets

Stuart H.M. Butchart<sup>1</sup>, Martin Clarke<sup>1</sup>, Robert J. Smith<sup>2</sup>, Rachel E. Sykes<sup>2</sup>, Jörn P.W. Scharlemann<sup>3</sup>, Mike Harfoot<sup>4,5</sup>, Graeme M. Buchanan<sup>6</sup>, Ariadne Angulo<sup>7</sup>, Andrew Balmford<sup>8</sup>, Bastian Bertzky<sup>4,9</sup>, Thomas M. Brooks<sup>7,10,11</sup>, Kent E. Carpenter<sup>12</sup>, Mia T. Comeros-Raynal<sup>12</sup>, John Cornell<sup>1</sup>, C. Francesco Ficetola<sup>13</sup>, Lincoln D.C. Fitchner<sup>1</sup>, Richard A. Fuller<sup>14</sup>, Jonas Goldmann<sup>15</sup>, Heather Harwell<sup>12,16</sup>, Ian May<sup>1</sup>, Megan<sup>21,22</sup>,  
**PARKS 2012 Vol 18.1**

#### MEETING AICHI TARGET 11: WHAT DOES SUCCESS LOOK LIKE FOR PROTECTED AREA SYSTEMS?

Stephen Woodley<sup>1,2\*</sup>, Bastian Bertzky<sup>4</sup>, Nigel Crawhall<sup>2,5</sup>, Nigel Dudley<sup>2,5</sup>, Julia Miranda Londoño<sup>2</sup>, Kathy MacKinnon<sup>2</sup>, Kent Redford<sup>3</sup> and Trevor Sandwith<sup>1</sup>



#### IUCN Resolutions, Recommendations and other Decisions

World Conservation Congress  
Honolulu, Hawai'i, United States of America  
6-10 September 2016

Calling for 30% marine coverage

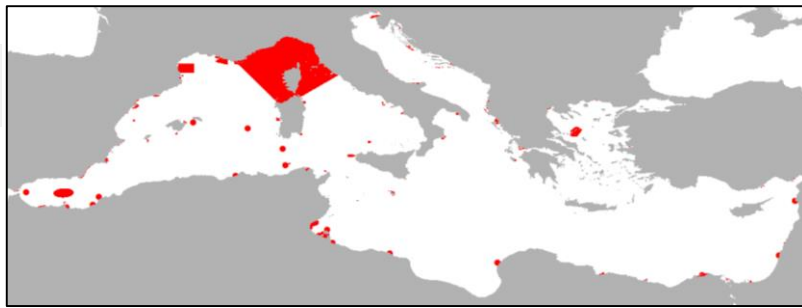




**What do we mean by area based measures and what do we include?**



World Database on Protected Areas



ACCOBAMS areas of special importance to cetaceans



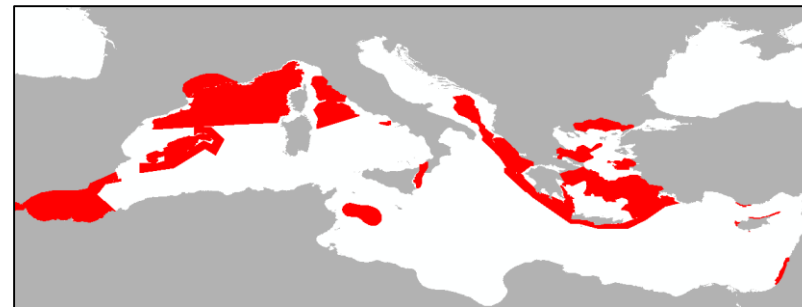
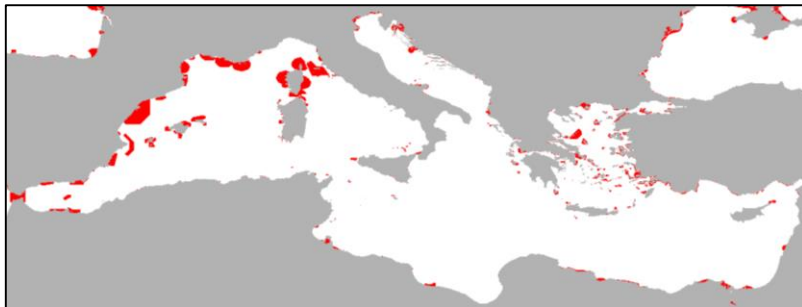
Ecologically or Biologically Sensitive marine Areas



Particularly Sensitive Sea Areas



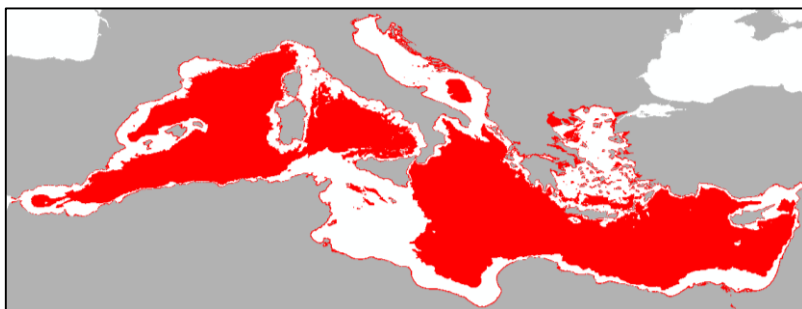
Key Biodiversity Areas



Important Marine Mammal Areas

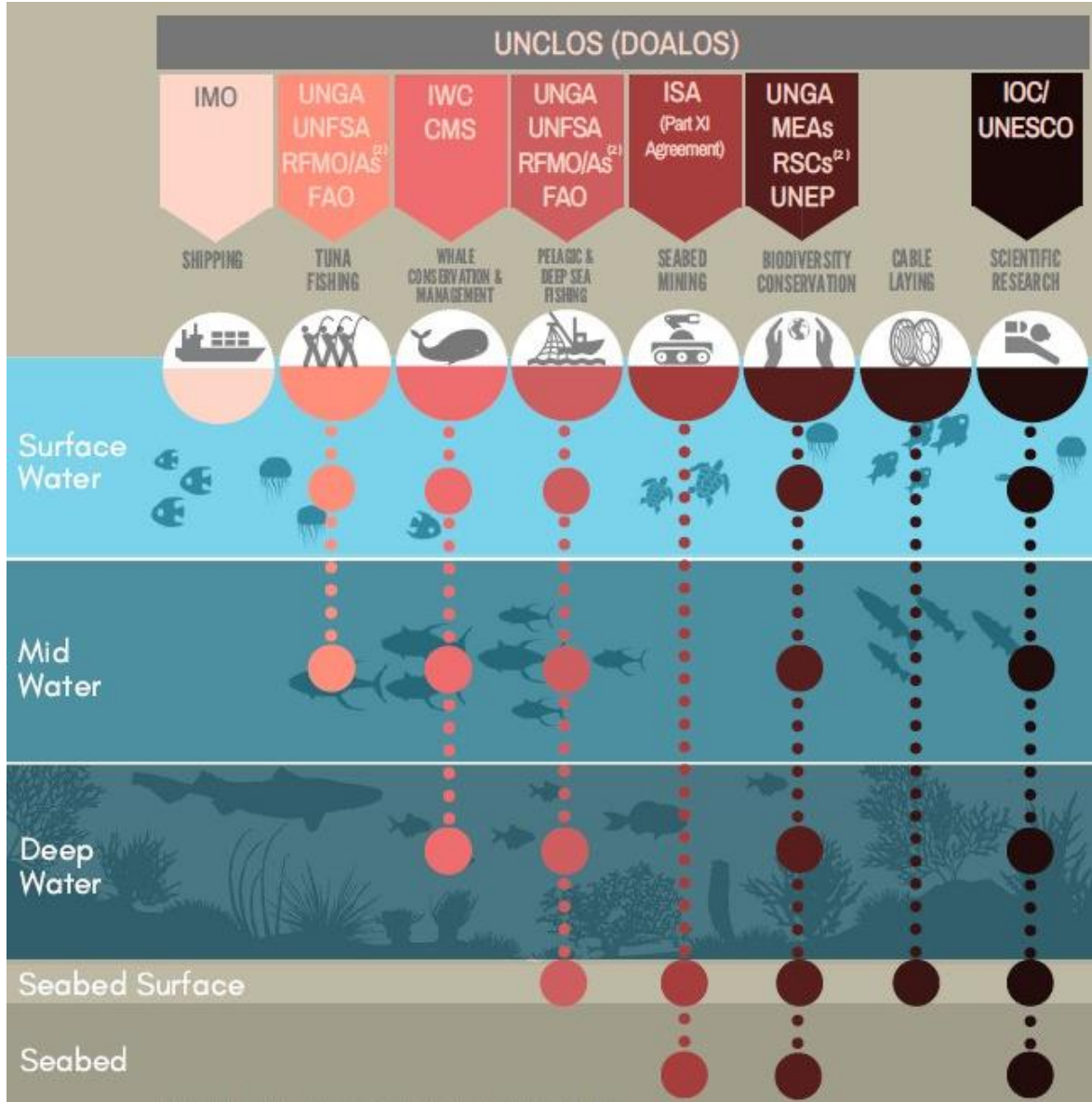


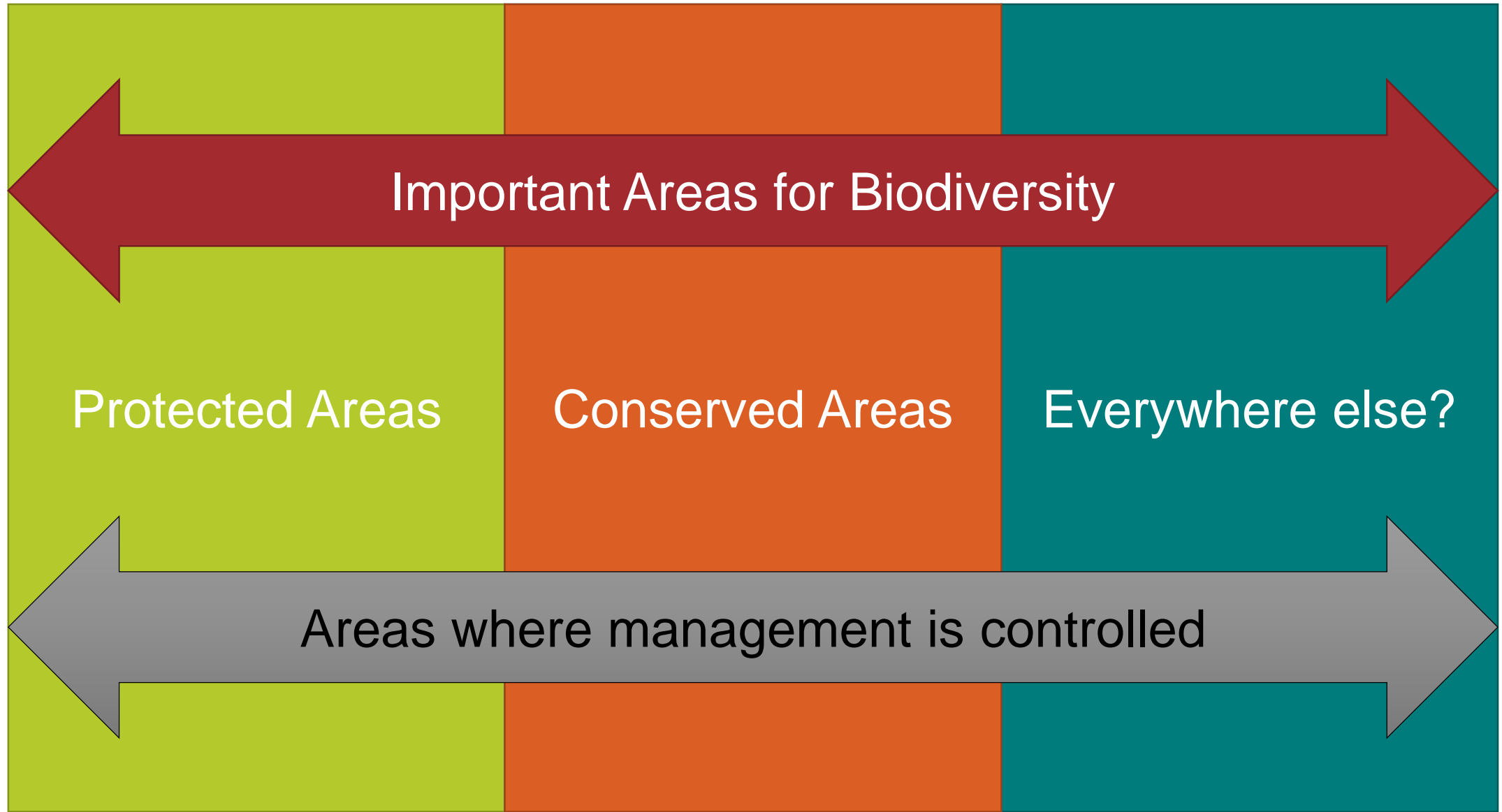
Bottom trawling prohibition for depths > 1,000 m



Fisheries restricted areas

# ABNJ RELATED OCEAN ACTIVITIES & EXAMPLES OF INSTITUTIONS <sup>(1)</sup>

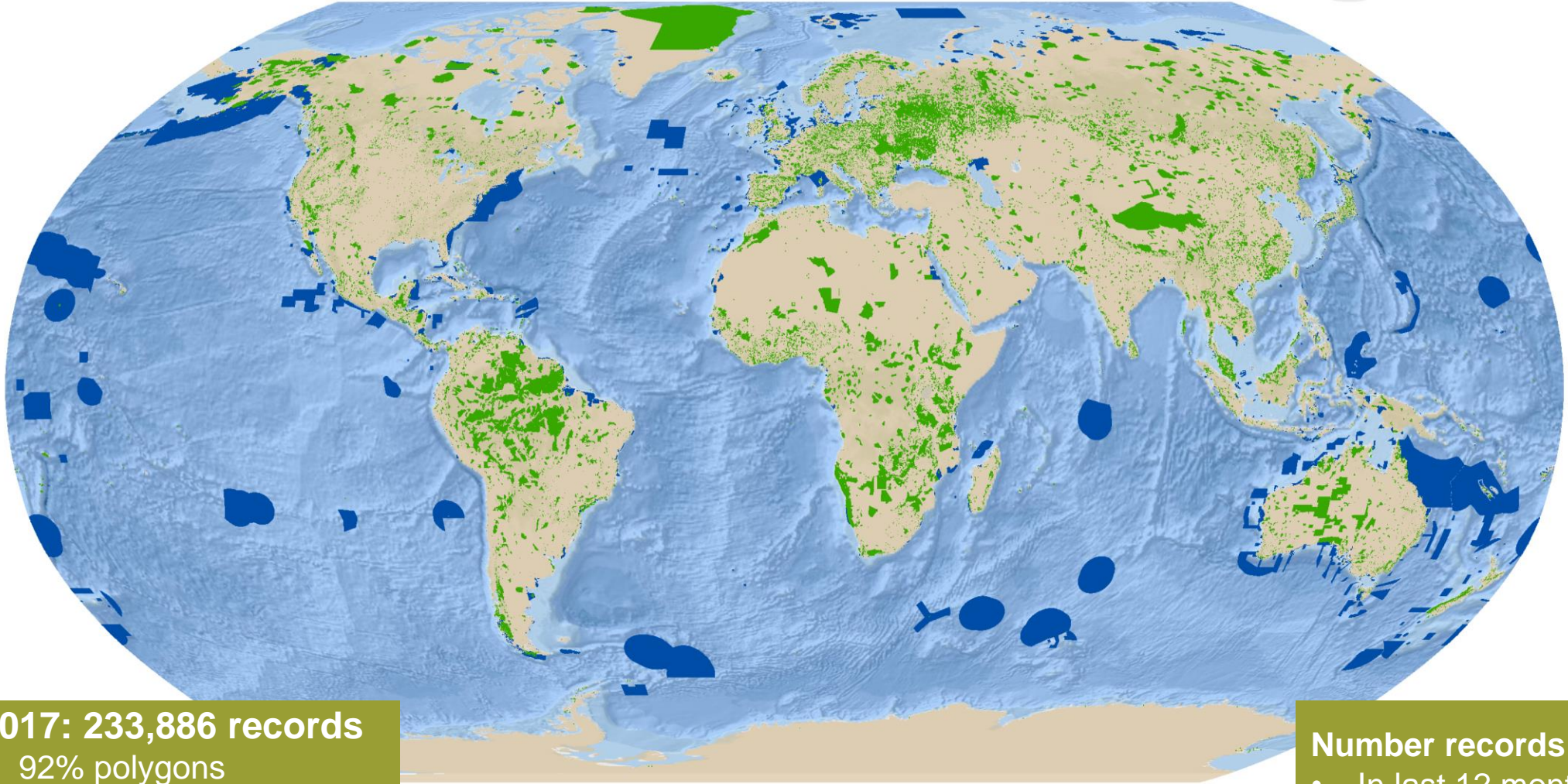




A dense tropical forest with many palm trees and thick vegetation. The scene is filled with various shades of green, from bright lime to deep forest green. Several tree trunks are visible, some with moss or lichen growing on them. The overall atmosphere is lush and vibrant.

**What do we know well?**

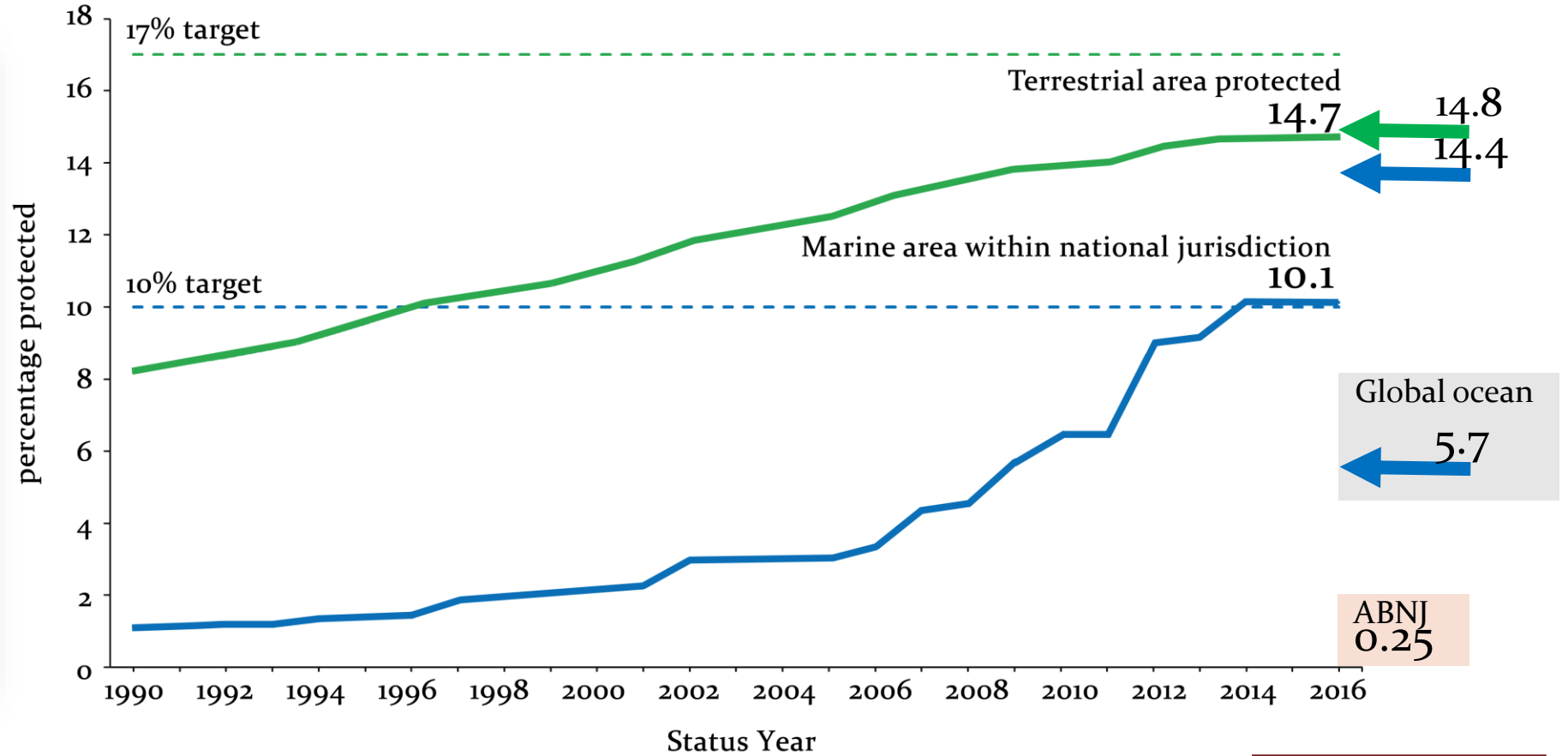
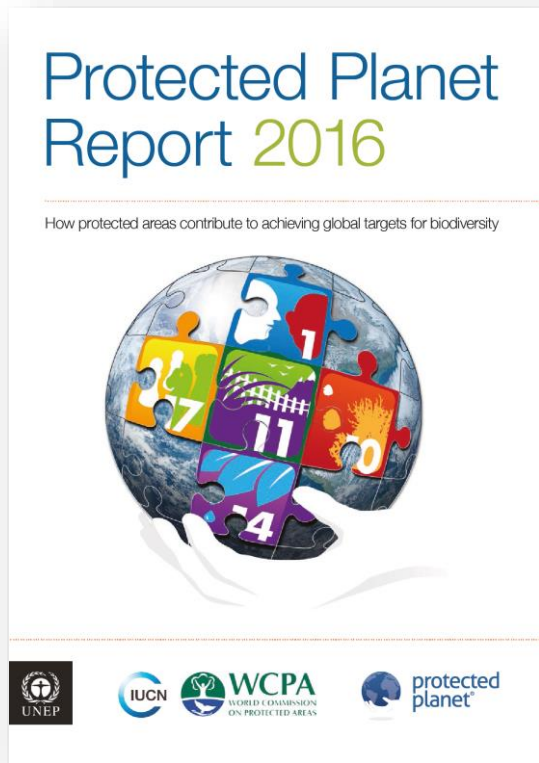
# Protected areas distribution



**June 2017: 233,886 records**  
92% polygons  
245 countries & territories

**Number records updated:**  
• In last 12 months: 86%

# Protected areas coverage



June 2017

# Areas of importance for biodiversity



A Global Standard for  
the Identification of Key  
Biodiversity Areas

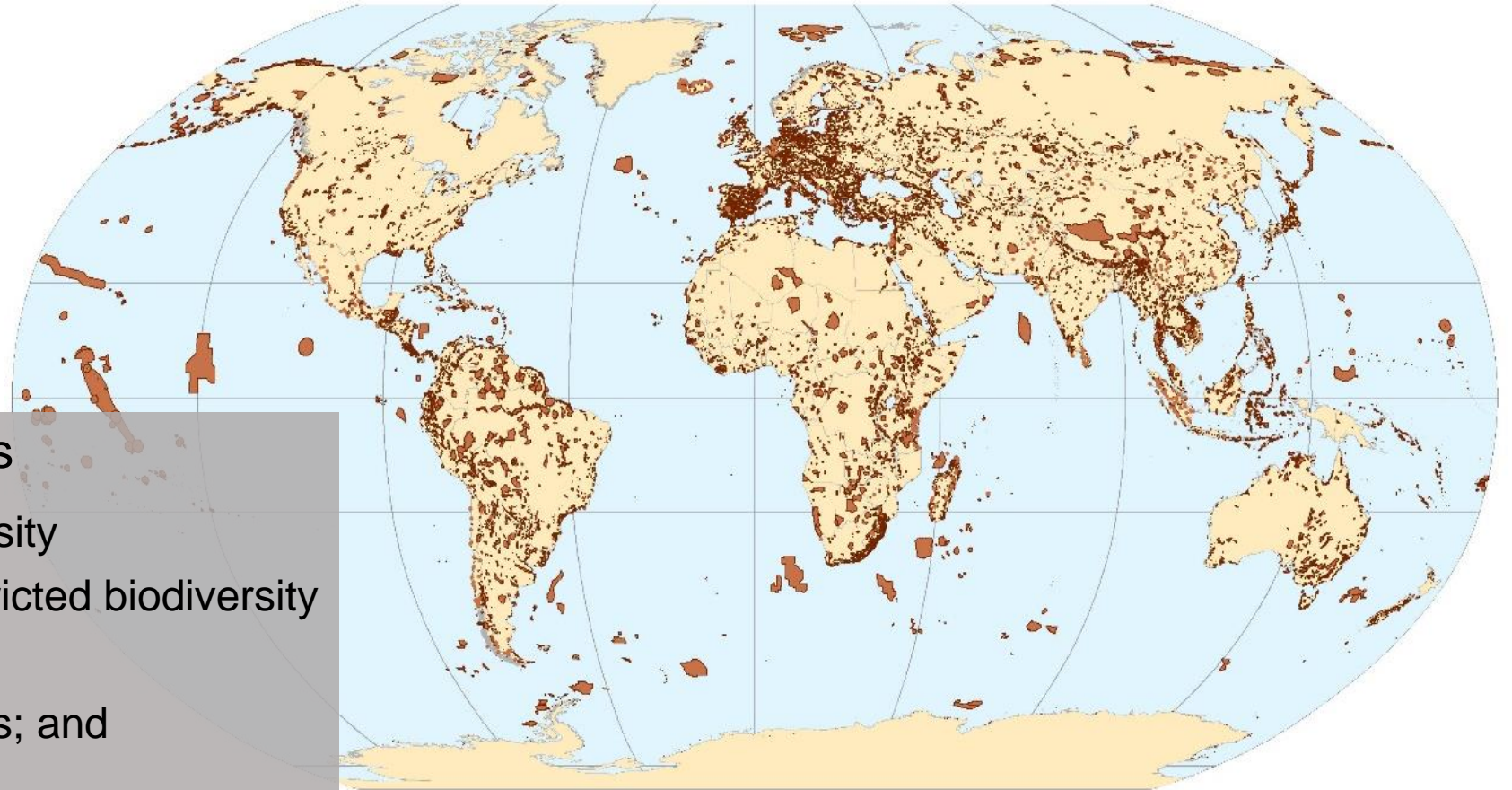
Version 1.0




## Key Biodiversity Areas

- threatened biodiversity
- geographically restricted biodiversity
- ecological integrity
- biological processes; and
- irreplaceability.

c.50% overlap with protected areas



# Areas of importance for Biodiversity


 Ecologically or Biologically Significant Marine Areas  
*Special places in the world's oceans*

Search

HOME ABOUT EBSAs MEETINGS RESOURCES COLLABORATORS

**View Areas Meeting the EBSA Criteria**

- All Regions
- Arctic
- Eastern Tropical and Temperat
- Mediterranean
- North Pacific
- North-west Atlantic
- South-Eastern Atlantic
- Southern Indian Ocean
- Western South Pacific
- Wider Caribbean and Western



Google Imagery ©2017 NASA, TerraMetrics Terms of Use

DISCLAIMER: The designations employed and the presentation of material in this map do not imply the expression of any opinion whatsoever on the part of the Secretariat concerning the legal status of any country, territory, city or area or of its authorities, or concerning the delimitation of its frontiers or boundaries.

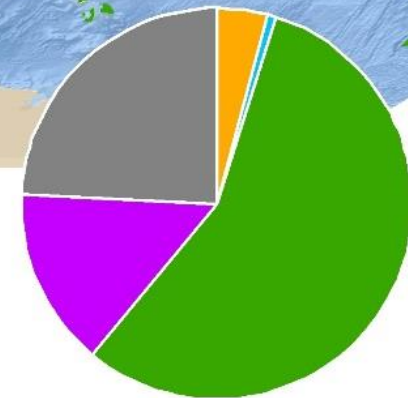
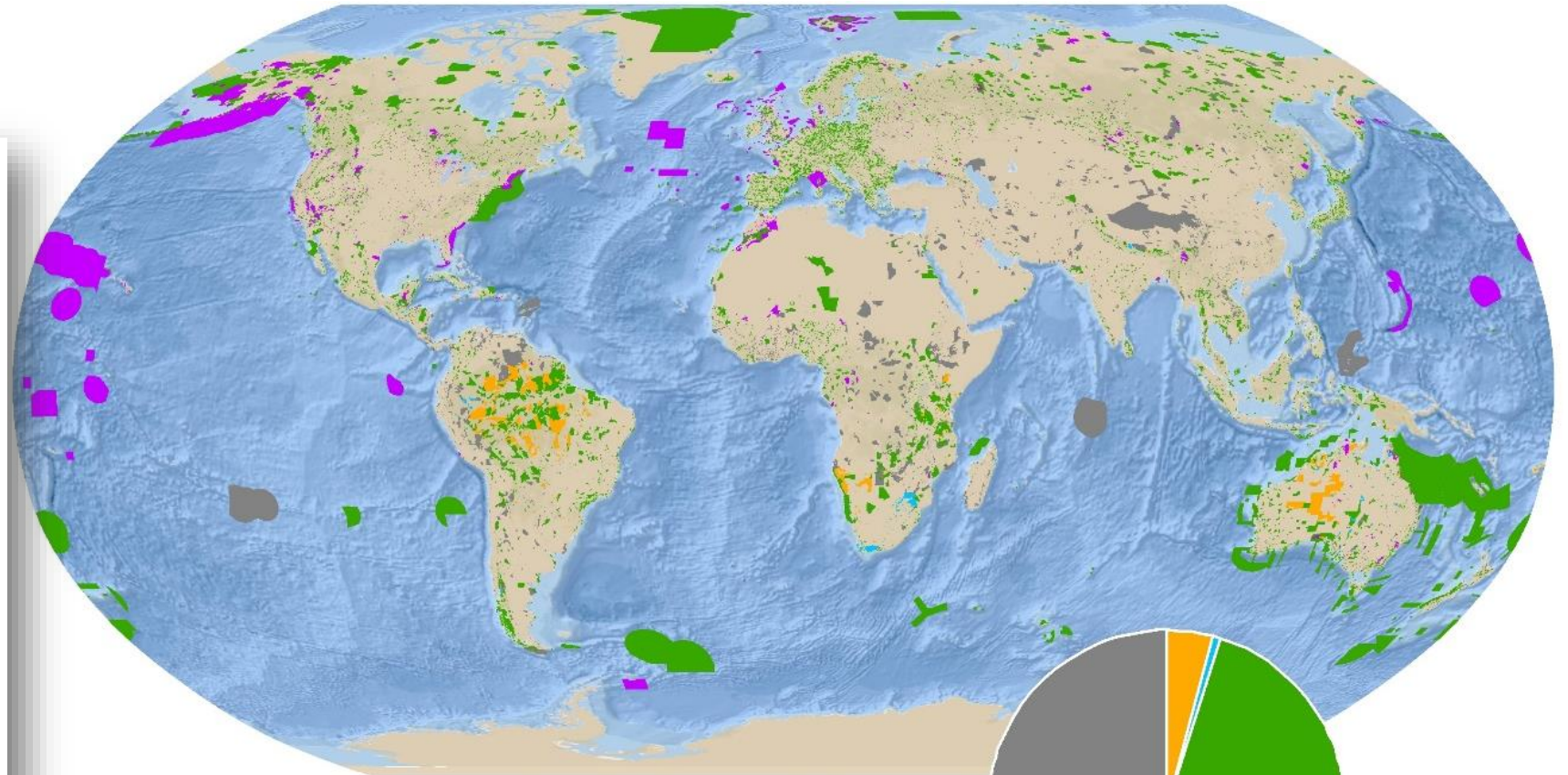
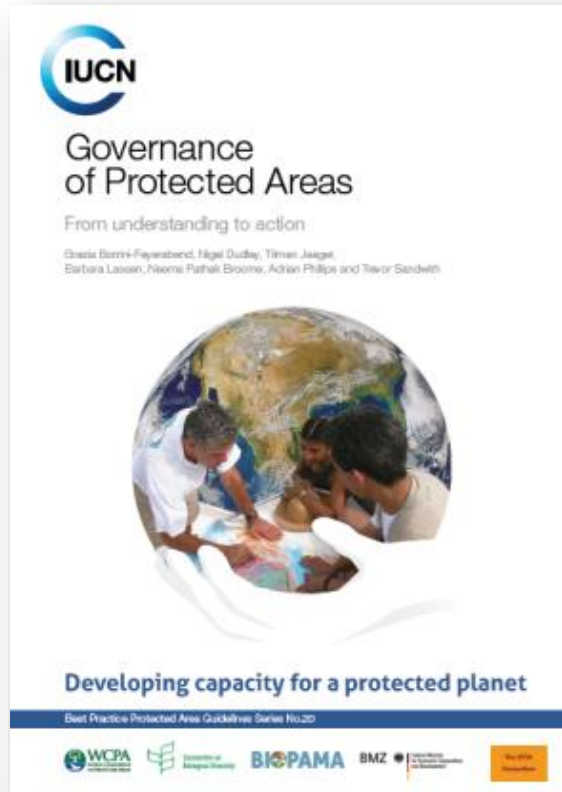
Criteria for ecologically or biologically significant areas:

- Uniqueness or Rarity
- Importance for life history stages
- Threatened, endangered or declining species and/or habitats
- Vulnerability, Fragility, Sensitivity, or Slow recovery
- Biological Productivity
- Biological Diversity
- Naturalness



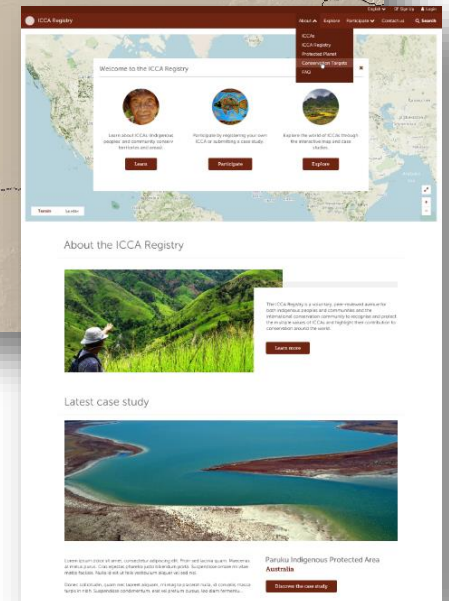
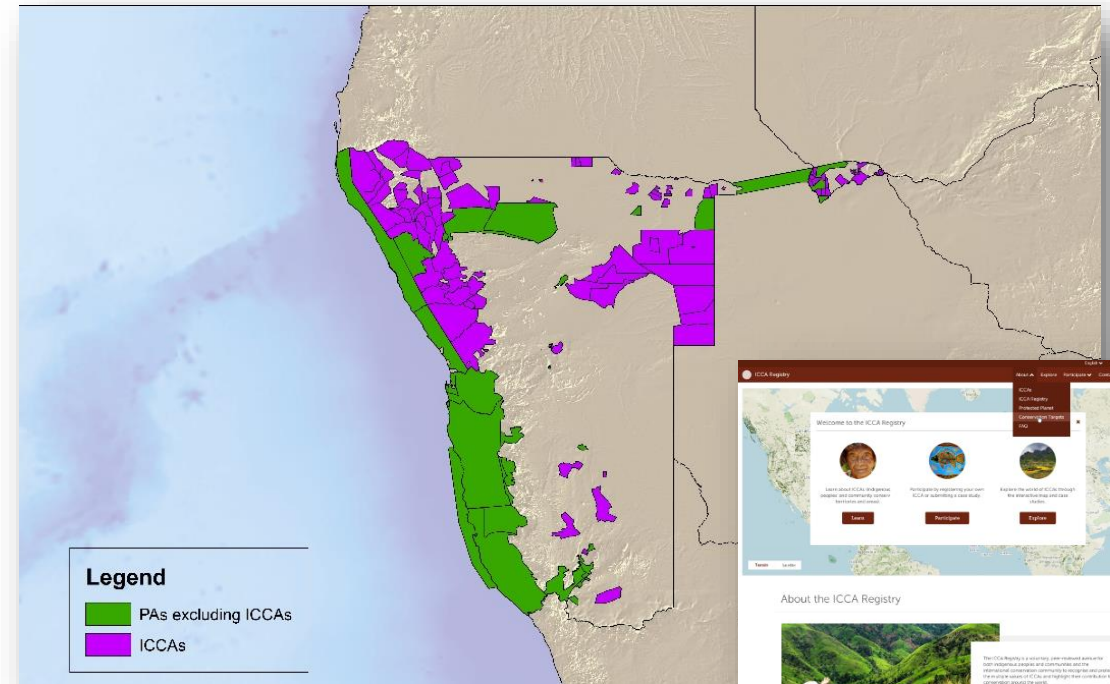
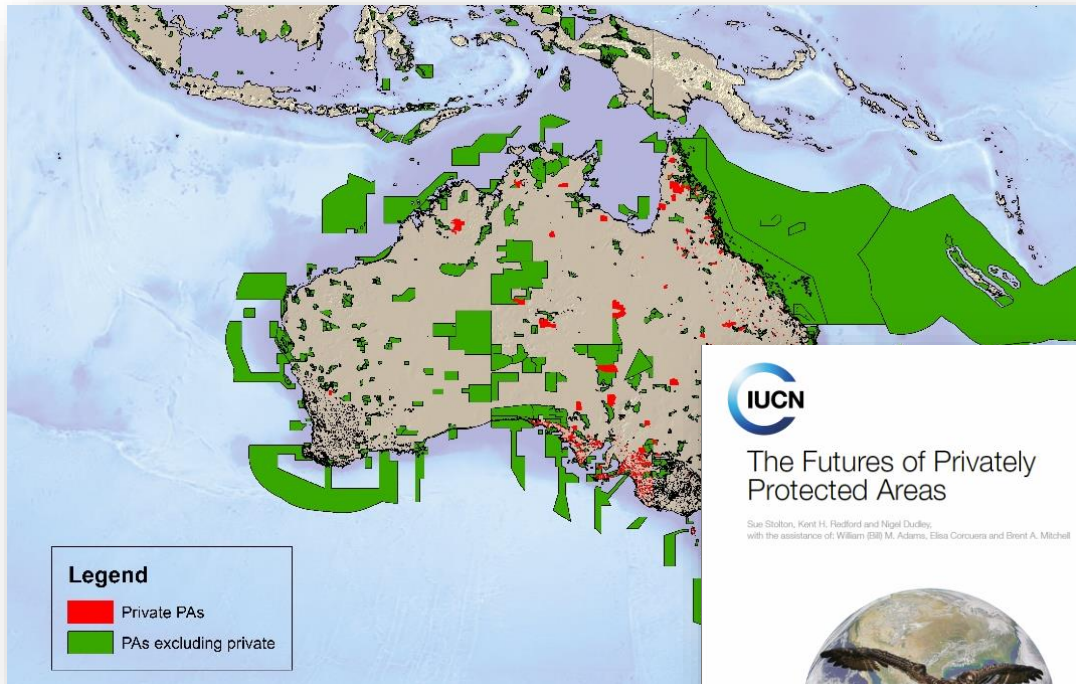
**What do we know less?**

# Complete network of Protected Areas



Ind/com Private Govt Shared Not Reported

# Complete network of Protected Areas



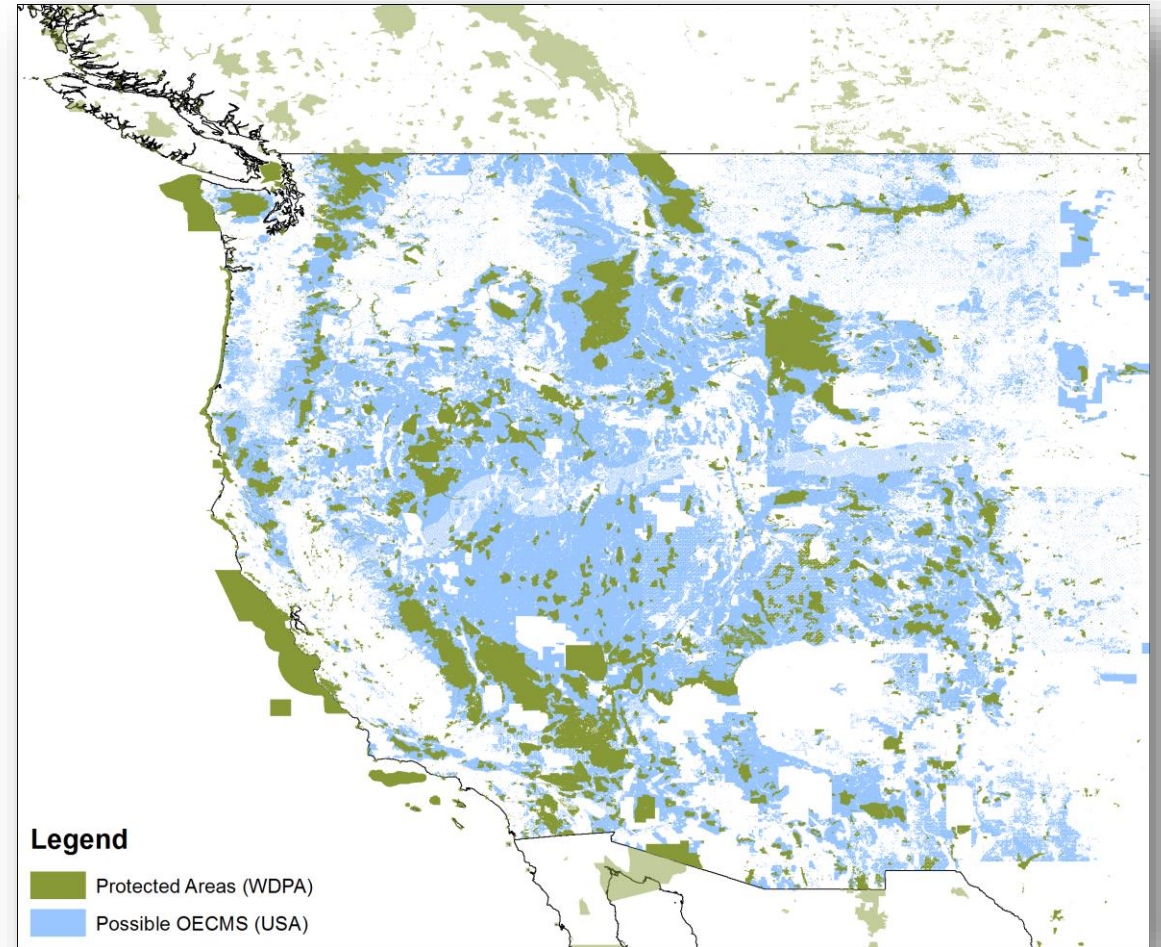
# Defining “Conserved Areas”

“other effective area based conservation measures” [OECM]

Terminology from CBD Aichi target 11

Draft definition from IUCN WCPA task force (to finalise 2018)

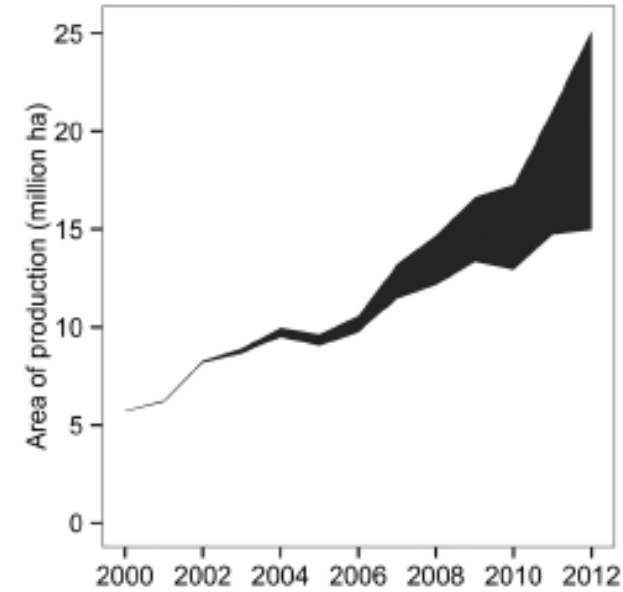
Likely to significantly change global progress calculations!



# Other areas?



Mount Candalaga, Philippines  
KBA, ICCA, Sacred Site, Candidate OECM



Total area managed under certification for cropland commodities  
*Taylor et al. (2016)*  
*Conservation Letters*

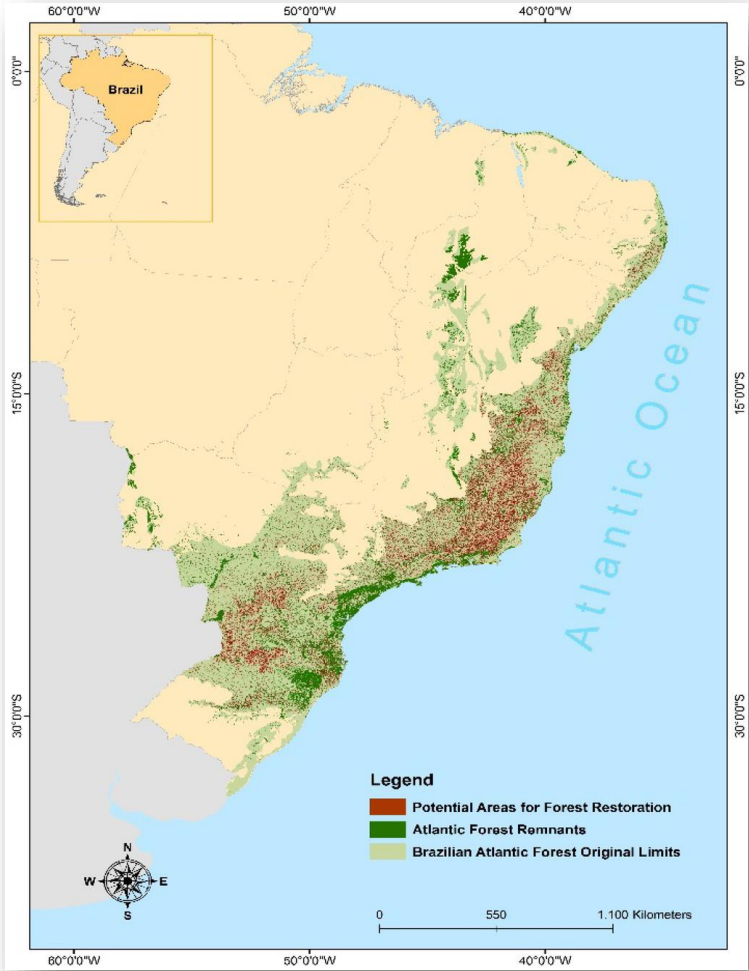


# Restoration areas



Atlantic Forest  
Reforestation Pact

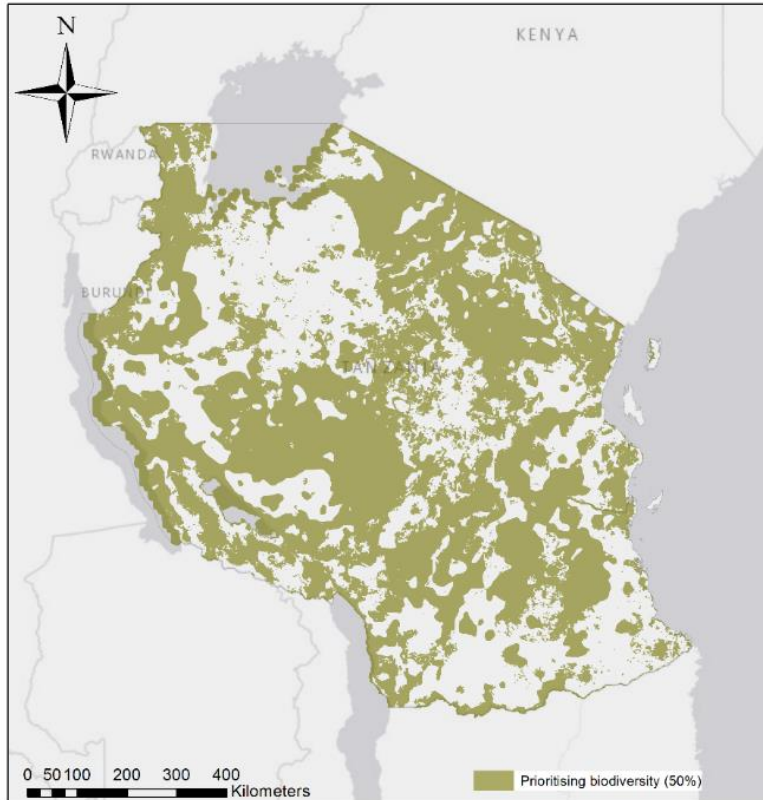
[www.pactomataatlantica.org.br](http://www.pactomataatlantica.org.br)



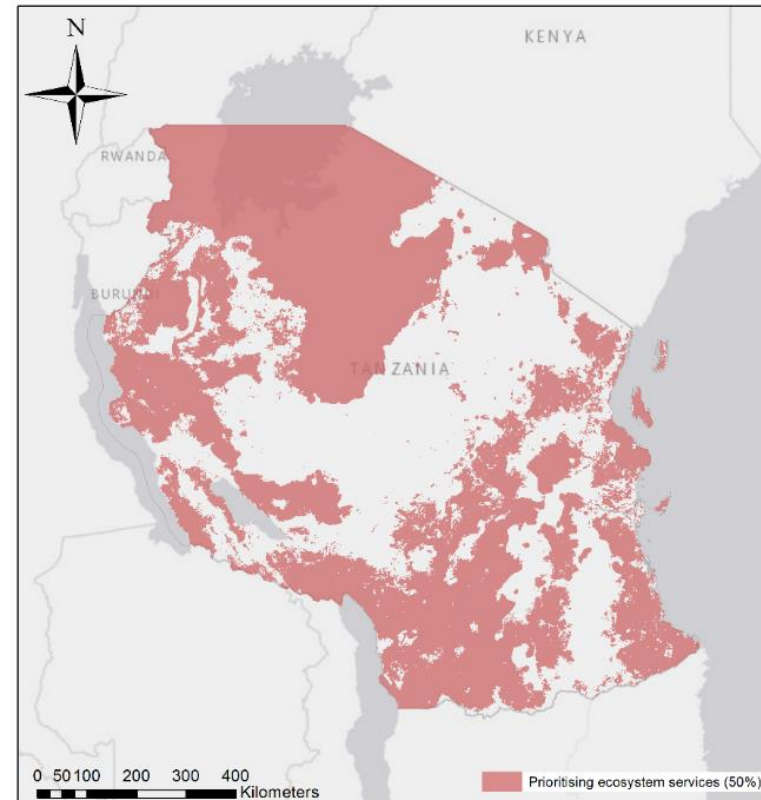


**Scaling up ambitions**

# Which biodiversity to prioritise?



50% protection based on high levels of biodiversity



50% protection based on high levels of ecosystem services



Credit: Scriberia

# **Gaps & priorities**

**Clarity on what areas are to be considered**

**Mechanisms for conserving Areas Beyond National Jurisdiction**

**Recognition & mapping of private, community and indigenous peoples' conservation areas**

**Agreement on 'conserved areas' definition & mapping**

**Key Biodiversity Areas identified & conserved**

**Measuring effectiveness & equity of areas**



# Support to business to navigate new agenda

**IBAT for Business**

You are successfully logged out.

## Global Biodiversity Decision Support Platform

IBAT is the gateway to information you can trust and tools that you need to make informed decisions about biodiversity risk and to report upon environmental performance.

- Screening Investments**  
Identify areas recognised as critical habitat (for example, following IFC's Performance Standard 6) and categorise projects accurately according to their environmental risk.
- Sustainability reporting**  
Maintain a catalogue of sites and quickly compile portfolio level information on environmental indicators to feed into sustainability reporting frameworks such as GRI.
- On-line maps and toolkits**  
Access on-line maps and toolkits tailored to business needs, offering unprecedented information on protected areas, the location and importance of priority sites for conservation (key biodiversity areas) and threatened species.

Navigation icons: Video, Question mark, Chat, Group of people, Dollar sign.

Footer: About | FAQs | Subscribers | Supporters | Contact Us | Terms of use | Privacy  
© 2008-2015 IBAT. All rights reserved. Designed by QPQ Software Ltd  
Partners: BirdLife International, Conservation International, IUCN, UNEP, WCMC

**BIODIVERSITY** a-z UN environment WCMC

Concise and authoritative information about biodiversity

Search | All themes

Browse by theme:

- ACRONYMS (Red bird icon)
- AREAS (Green ant icon)
- COUNTRIES (Yellow globe icon)
- MARINE (Blue fish icon)
- TERMS (Orange lizard icon)



[naomi.kingston@unep-wcmc.org](mailto:naomi.kingston@unep-wcmc.org)

[www.protectedplanet.net](http://www.protectedplanet.net)

