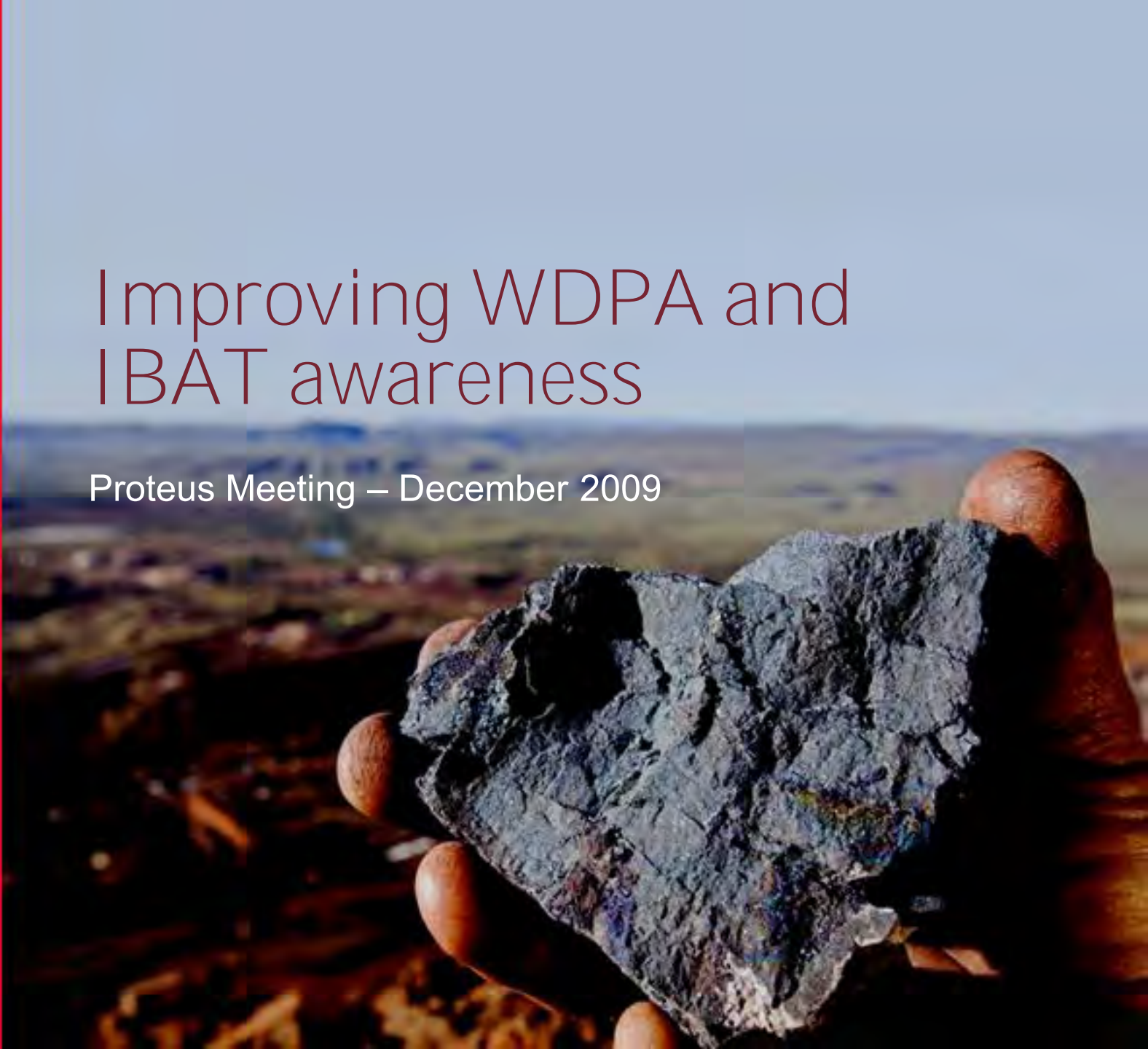


## Improving WDPA and IBAT awareness

Proteus Meeting – December 2009



# WDPA and IBAT awareness

- Rio Tinto Exploration has offices in all continents and was interested in raising internal awareness of WDPA and IBAT databases
- 3 sessions of 1 hour each was conducted considering 3 different time zones aiming at appropriate working hours for users in each region (Americas, EMEA and Australasia)
- A voice conference call together with a tool (Webex) to share a single desktop (UNEP-WCMC notebook) using a web browser for real-time presentation was used
- The WDPA and IBAT sessions was conducted by UNEP-WCMC team who also lead a Q&A at the end of the presentation
- Approximately 50 exploration people in 11 countries attended
- Feedback received revolved around accuracy of the data and our strategy going forward considering the growth pace of protected areas

# WDPA - IBAT Awareness via internal Portal

The screenshot shows a web browser window titled "Exploration Overview - Prospect - Windows Internet Explorer". The address bar shows "http://prospect.riotinto.org/irj/portal". The page header includes the Rio Tinto logo and "Prospect THE RIO TINTO GROUP PORTAL". A navigation menu contains links for Home, Business Information, Communities, Collaborative Tools, About Me, and About My Team. Below this, there are sub-links for Operations and Businesses and Location Finder. The main content area is titled "Exploration Overview" and features a "Detailed Navigation" sidebar with links to Exploration Overview, Business Information, Regional Resources, People, and Manage HSEQ. The central content area is titled "Exploration" and displays "Exploration News and announcements" with a "Show: All Newsfeeds" dropdown. Three news items are listed:

- RTX 2010 plan announcement**  
Source: Exploration Newsfeed  
See attached file for full announcement  
14 October 2009
- WDPA presentation to Rio Tinto Exploration**  
Source: Exploration Newsfeed  
The purpose and features of the service are explained  
12 October 2009
- WDPA October update**  
Source: Exploration Newsfeed  
New polygons available for South American and Central American countries  
9 October 2009

Below the news items is an "Organisational Chart" section titled "Manage Content" with a sub-link "Organisational Chart". The chart shows a hierarchy starting with "Rio Tinto Exploration Executive" at the top, branching into two boxes: "Organisation on regional basis" and "Organisation on functional basis". To the right of the news items is a "Welcome" section with a photo of a man and a "Manage Content" link. The text in this section reads: "Welcome to the Rio Tinto Exploration Portal! The mandate of Exploration is to grow the value of the company through discovery or acquisition of mineral resources that can increase our future cash flows. Our discovery objective of one Tier 1 discovery per year means that we are focused on finding only the largest and highest-quality mineral deposits that the natural world has to offer. Meeting this challenge is a global Exploration team of over 900 people operating in some 35 countries around the world. The purpose of the Exploration Portal is as follows: To inform our colleagues in Rio Tinto about the scope of the global exploration programme and to provide them with access to key geoscience information and links to our regional exploration teams, our commodity and technical specialists and our commercial general managers. To provide our Exploration staff with a 'one-stop shop' for exploration-related information, for example the HSEC management system, collaborative forums and external newsfeeds. We would welcome constructive comment on how we can improve the Exploration Portal." Below this is the name "Eric Finlayson" and a request for feedback: "Please provide us feedback on the content and useability of this community."

Announcements are posted into Exploration Portal when updates are received

# WDPA - IBAT Awareness via internal Portal

The screenshot shows the 'Exploration Overview' page of the Prospect internal portal. The page features a navigation menu on the left with categories like 'Home', 'Business Information', and 'Communities'. The main content area is divided into several sections, each with a logo and a brief description of a service or database:

- MEG (Metals Economics Group):** Access MEG through Exploration's corporate subscription.
- InfoMine (Mining Intelligence & Technology):** Access Rio Tinto's subscription to Infomine.
- MiningNews.net:** Subscribe to MiningNews.net. Send an email to: Kim.Windsor@riotinto.com with the following text in the subject line: 'Subscribe to MiningNews.net'.
- World Database on Protected Areas (WCPA):** Use your own @riotinto.com email address and the Password.
- World Database on Marine Protected Areas (WCPA):** Use your own @riotinto.com email address and the Password.
- Integrated Biodiversity Assessment Tool IBAT:** Username: 'user@riotinto.com' Password: [blank].
- PetroleumNews.net subscription:** Send an email to: Kim.Windsor@riotinto.com with the following text in the subject line: 'Subscribe to PetroleumNews.net'.
- International Longwalls News:** Send an email to: Kim.Windsor@riotinto.com with the following text in the subject line: 'Subscribe to International Longwalls News'.
- PNG Industry News Subscription:** Send an email to: Kim.Windsor@riotinto.com with the following text in the subject line: 'Subscribe to PNG Industry News'.

On the right side of the page, there are several links and sections, including 'Welcome to the new SLDP Website', 'Travel Information Links', 'Group Travel Information Wiki SOS Travel', 'HSEC Document management system (DMS)', 'Swine Flu Links', 'Global Security Prospect page', 'Managers Toolkit', 'ServU links', and 'ServU service list'.

Instructions on how to login in into databases permanently displayed on Exploration Portal

# Summary

- The Proteus partnership has allowed Rio Tinto Exploration to have easy online access to information on protected areas and biodiversity hotspots.
- In addition, the monthly database updates are made available internally, and users can integrate the protected areas data into our GIS applications to assist in the decision making process.
- Internal awareness sessions were conducted by the UNEP-WCMC team in order to further highlight the pace of growth of protected areas around the world and to demonstrate how the data could be accessed.
- This has provided us with an opportunity to reinforce Rio Tinto's commitment to manage risks effectively, considering both protected areas and biodiversity in the regions in which we operate