



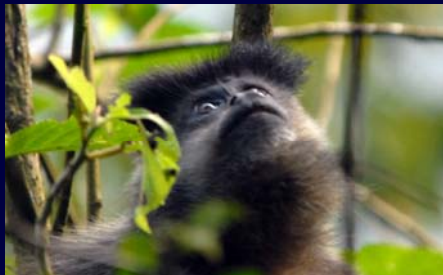
Redevelopment of the World Database on Protected Areas

Presented at Proteus Partners Meeting
December 11, 2007
Cambridge, UK

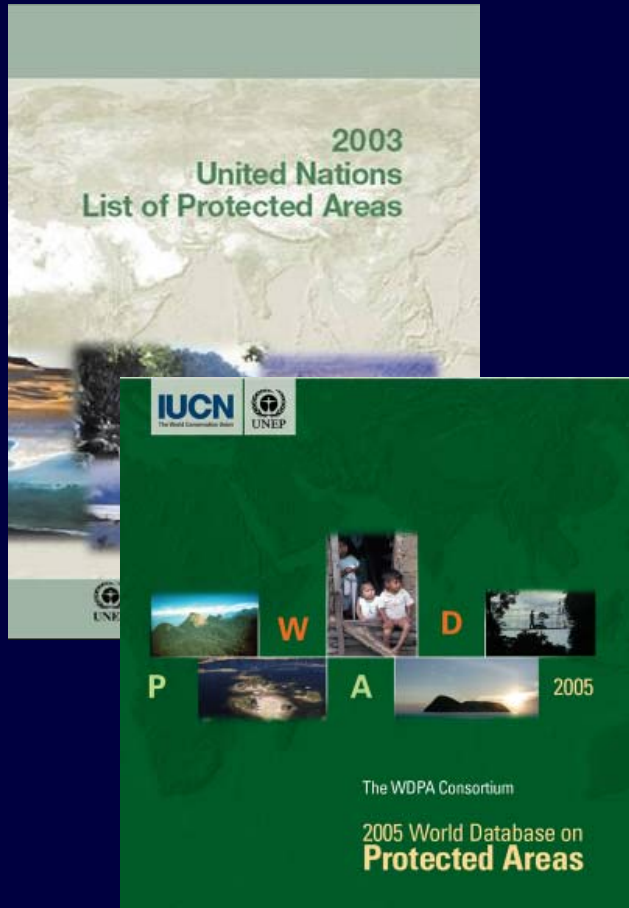
Charles Besançon
Head of Protected Areas Programme

My Presentation

- ◆ Background on the redevelopment project
- ◆ Demonstration
- ◆ Where do we go from here?



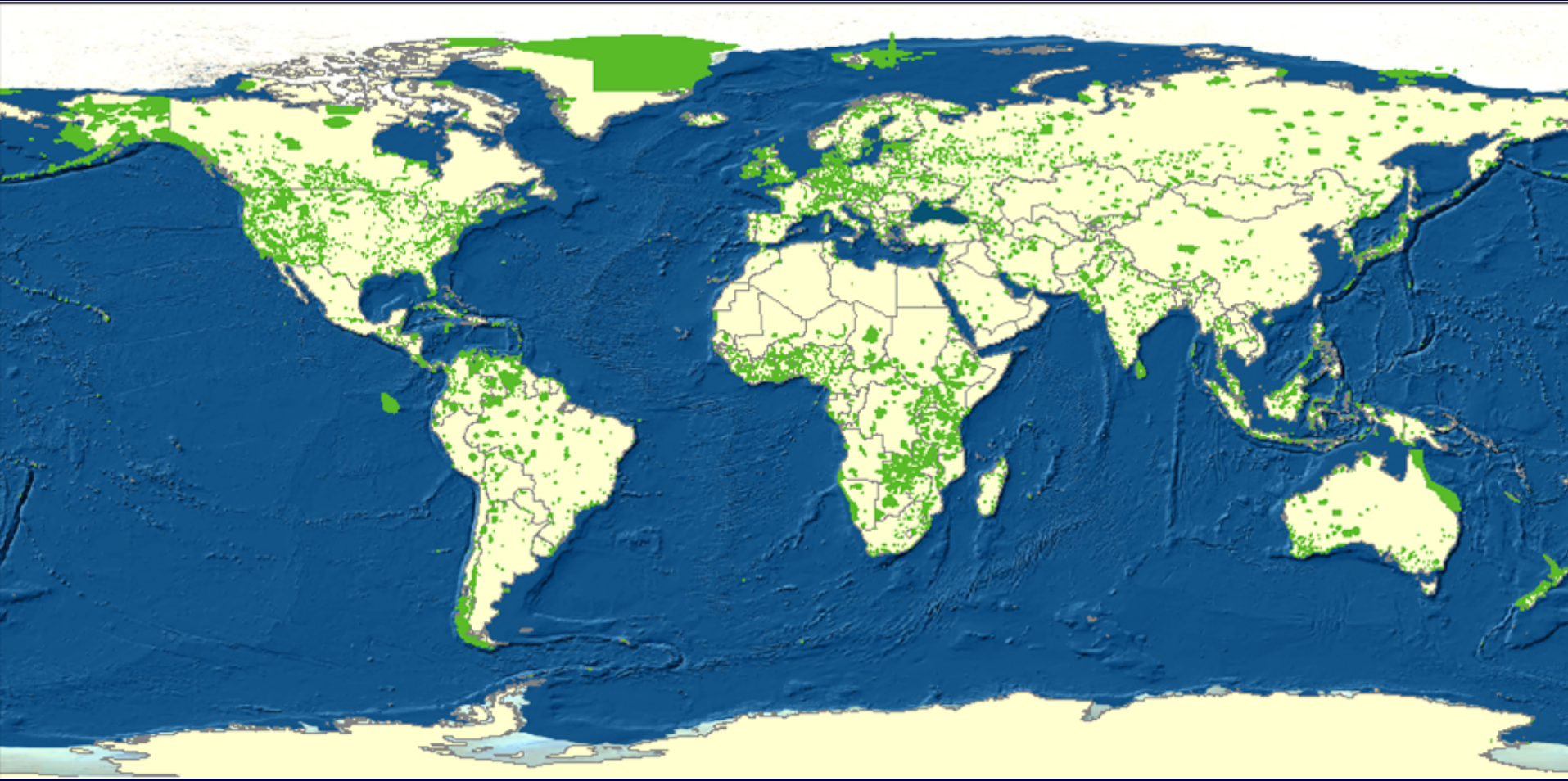
World Database on Protected Areas Origins



- ◆ The WDPA is over 20 years old, and began life as a table of basic site details
- ◆ Today the WDPA holds over 100,000 protected areas
- ◆ It contains sites established by national governments, international conventions and/or agreements
- ◆ A joint project with IUCN - WCPA & managed by UNEP - WCMC
- ◆ Only comprehensive global inventory of the world's protected areas

The World's Protected Areas

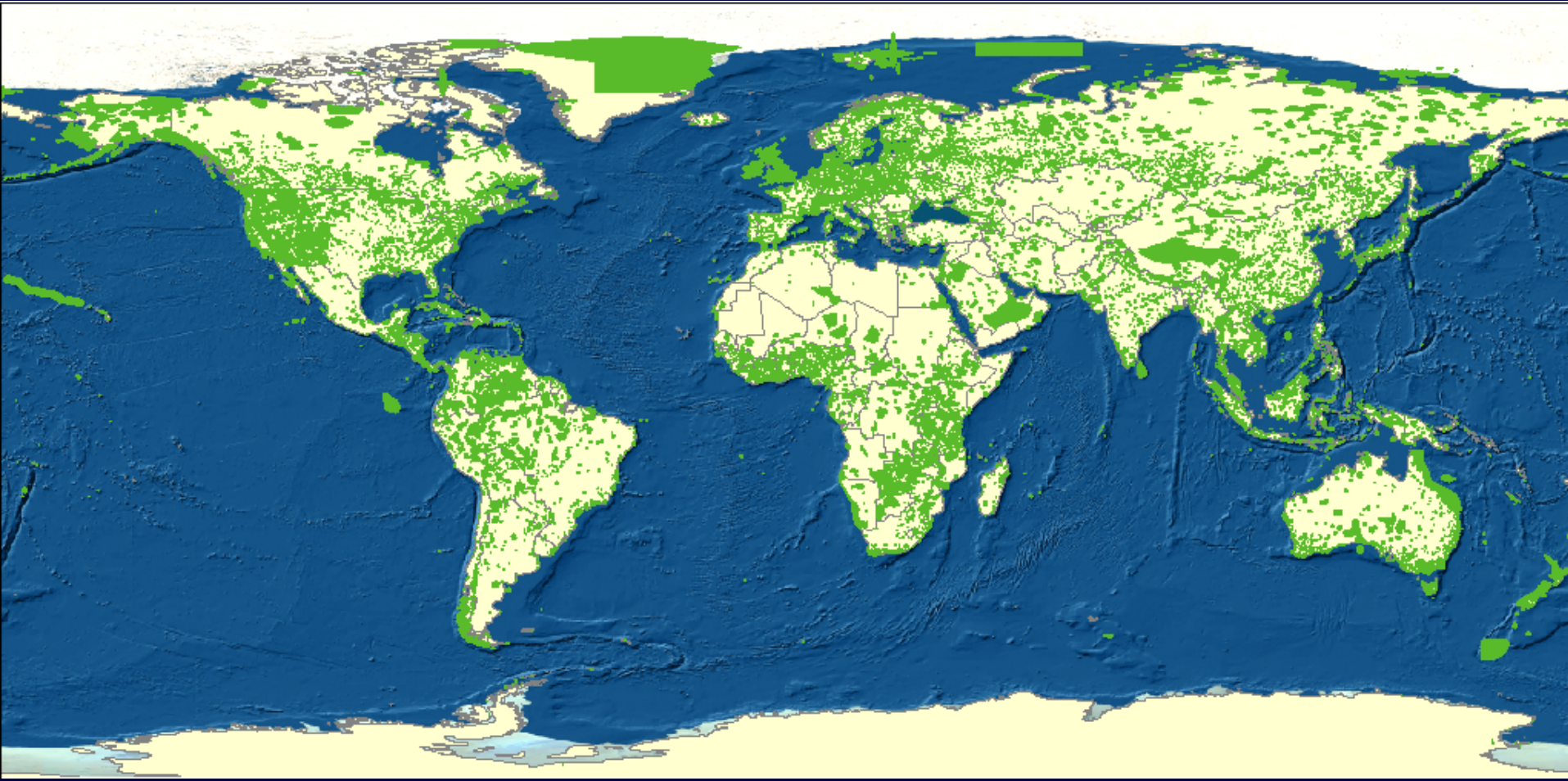
1980: 40,000 protected areas covering 7,000,000 km²



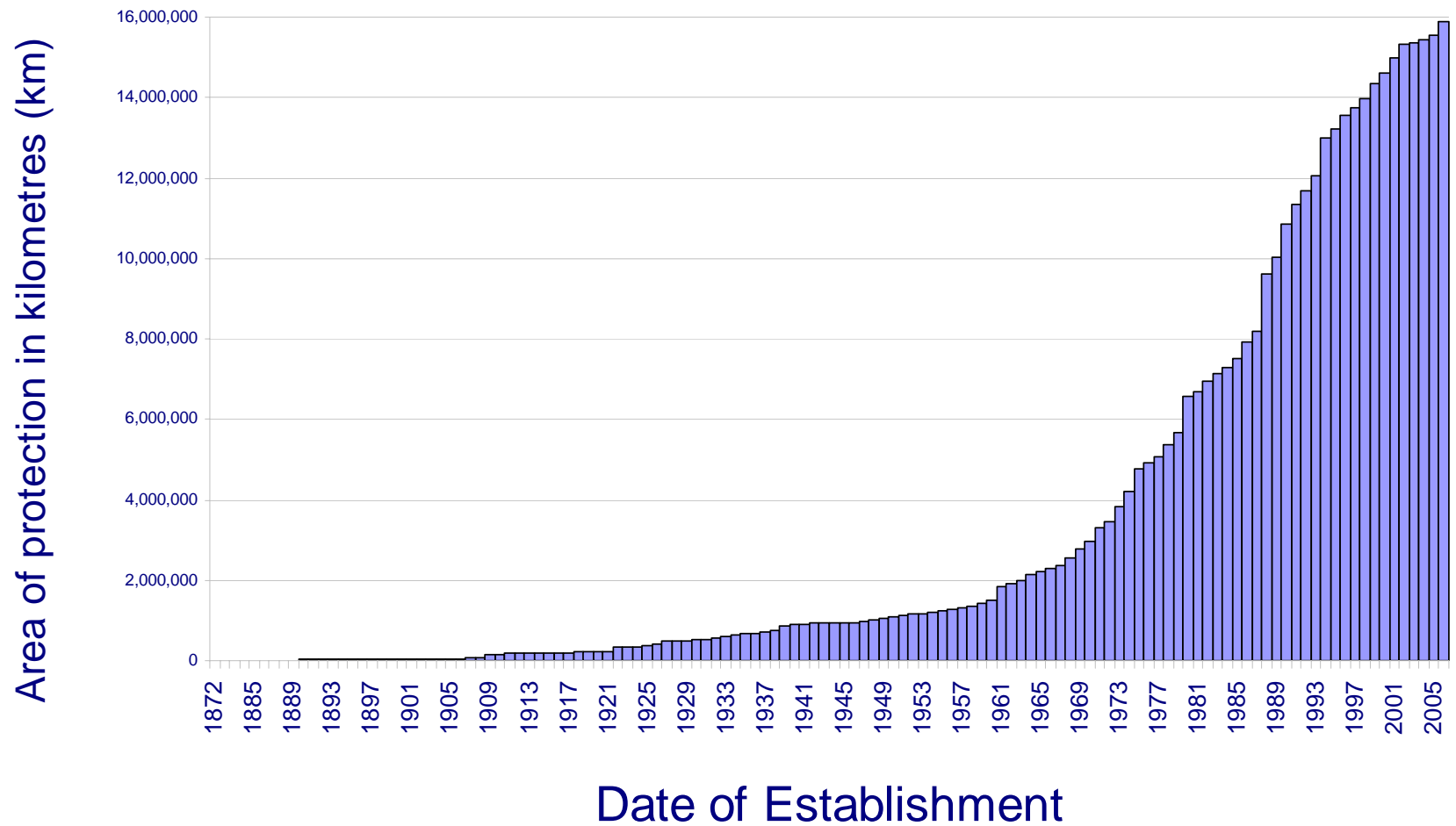
The World's Protected Areas

1980: 40,000 protected areas covering 7,000,000 km²

2007: 106,000 protected areas covering 18,000,000 km²



Protected Area coverage is growing exponentially...



WDPA - What is it used for?

- Tracking progress and reporting through intergovernmental processes
 - The UN Millennium Development Goal 7 on environmental sustainability
 - UN Commission on Sustainable Development
 - The Convention of Biological Diversity (CBD) Programme of Work on Protected Areas 2010 and 2012 Targets
- Private Sector decision making
 - Making informed decisions about present and future projects
- Conservation purposes
 - Gap analysis
 - PA coverage
 - Environmental Impact Assessment
 - Assessment of threats to biodiversity
 - Foundation layer for many analyses and for map creation

PROTECTED AREAS AND INDIGENOUS RESERVES OF BRAZIL



LARGEST COASTAL CITIES PROJECTIONS
SCALE 1:800,000
Trompsburg = 1800; Salsburg = 1700; Salsburg = 1700
Projected Area
Present Area (1980) (orange line)
Indigenous Area
Elevation in meters



Redeveloping the WDPA

◆ Why?

Decision
making



- Demands for improved quality and quantity of information
- Information revolution
 - ◆ UNEP-WCMC Conservation Commons leaders
 - ◆ Need to expose data on internet
 - ◆ Need interactive web tools
- Science demands it
 - ◆ Complex analyses demand new data structures
- Biodiversity is shrinking, people are worried!
 - ◆ Biodiversity more important than ever
 - ◆ Increased number of WDPA users
 - ◆ Increased data inputs and management demands

Results of investment

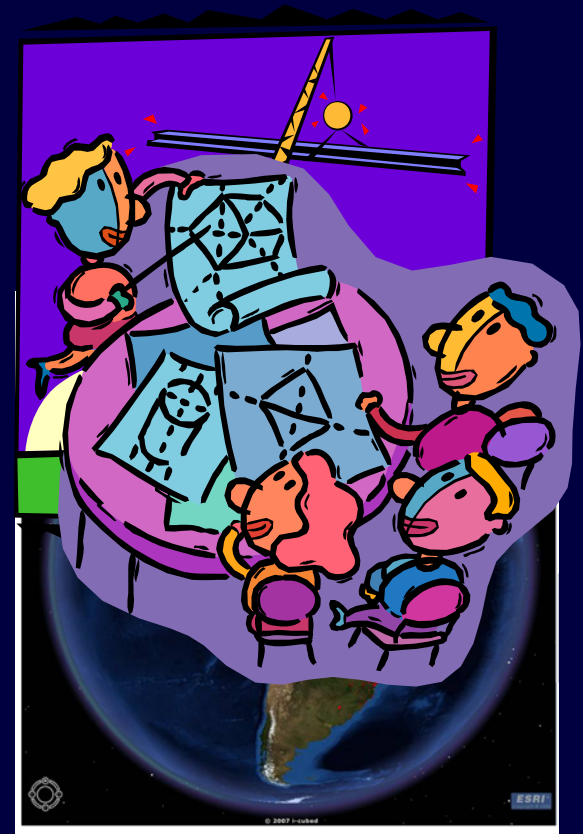


- ◆ Increased efficiency
- ◆ Effective & streamlined process
- ◆ Relevance to more users
- ◆ Interactive capabilities
- ◆ Transparent data management processes
- ◆ Better source tracking
- ◆ Increased capacity

Features of “new” WDPA

◆ Demonstration:

1. Data upload (Lucy)
2. Validation tools (Craig and Lucy)
3. Reporting and outputs (Colleen)



Demonstration

- ◆ Key message: improved data and delivery
- ◆ Turn over to Derek



Features of “New” WDPA

◆ Summary of demonstration:

1. Data upload

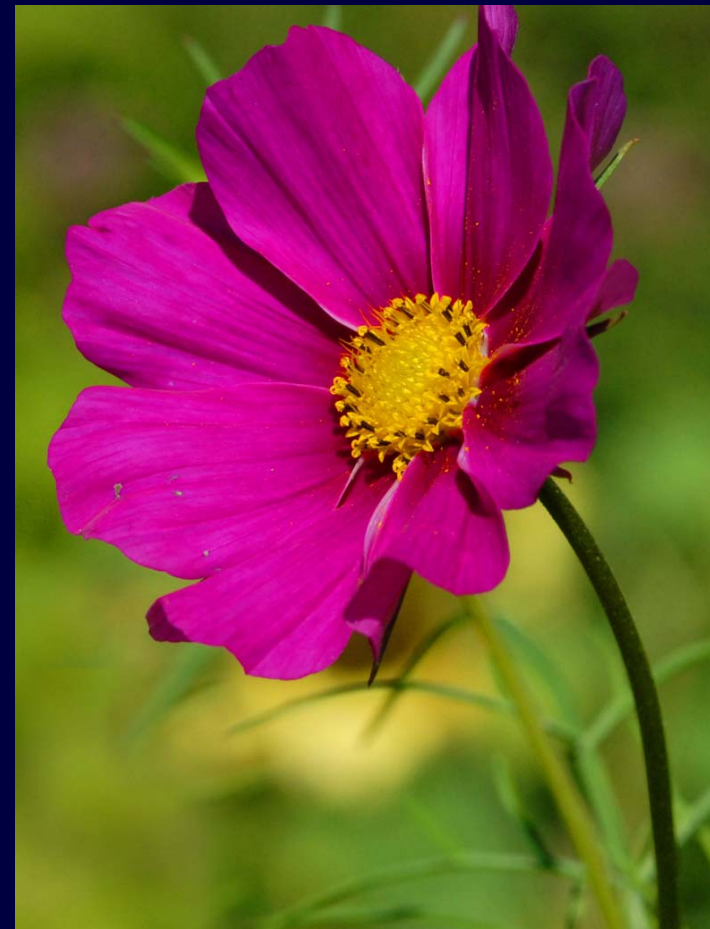
- ◆ Decentralized process
- ◆ Role of data provider

2. Validation tools

- ◆ Highly automated
- ◆ Includes expert review system

3. Reporting and outputs

- ◆ Advanced Search Engine
- ◆ ESRI Arc GIS Explorer
- ◆ Future: Google Earth, Microsoft Virtual Earth

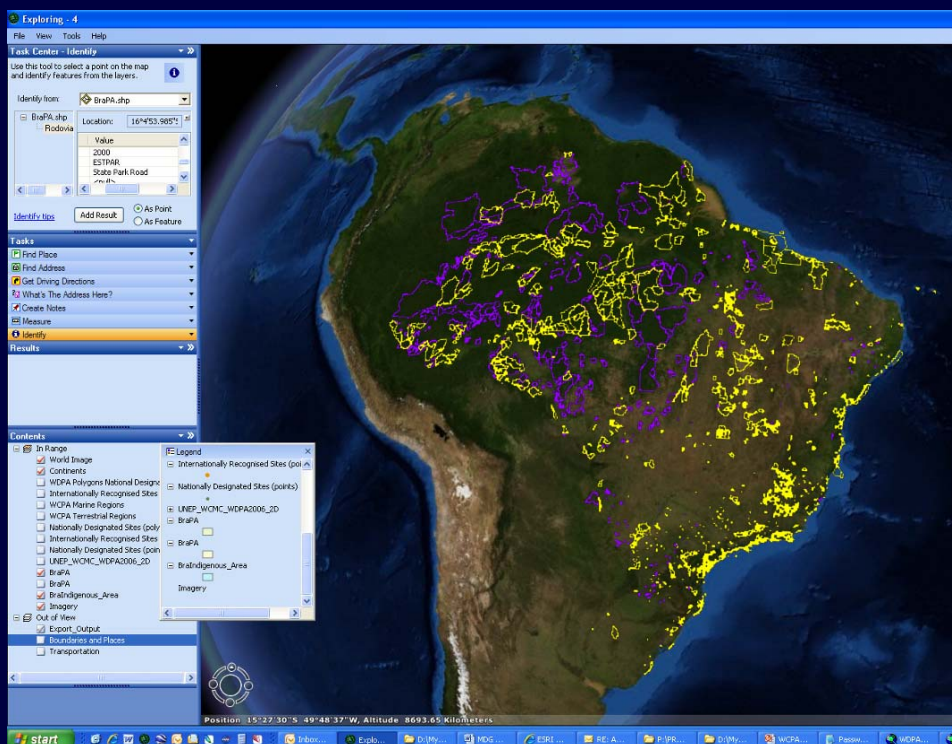


WDPA Redevelopment Benefits

1. Using innovative technology to enhance conservation decision making
2. Leverages new partnerships
3. Helps to reduce uncertainty and manage risk in private sector activity

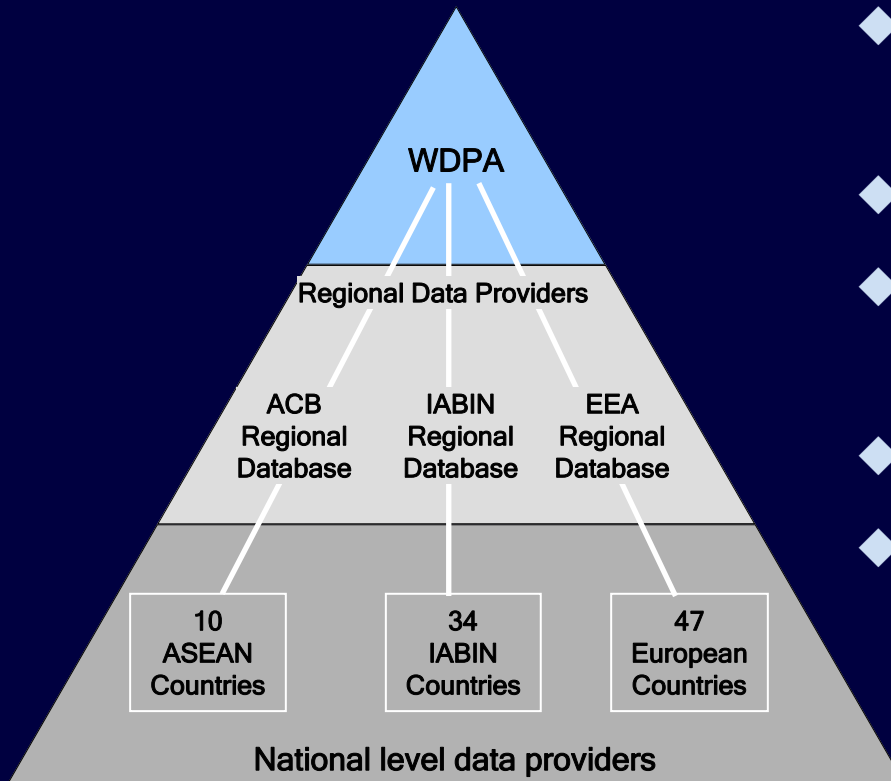


1. Innovative Technology



- ◆ Built on robust technology platform
 - ESRI, Microsoft
- ◆ Interoperable, decentralised processes, OGC compliant
- ◆ Geo-wiki (Jon H to discuss)
- ◆ Built stronger team at UNEP-WCMC for development

2. New (and renewed) Partnerships

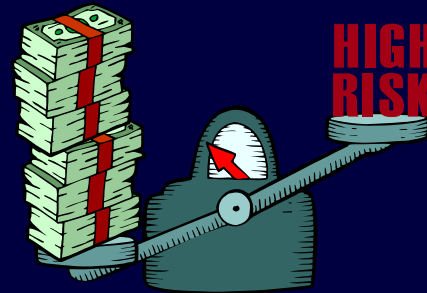


- ◆ Renewing relationship with IUCN
- ◆ Regional programmes
- ◆ Convention on Biological Diversity
- ◆ Conservation NGOs
- ◆ Engaging NGOs and national authorities
 - IUCN WCPA expert review system

3. Reduce Uncertainty and Manage Risk

Using better information allows you to better manage:

- ◆ Financial Risk
- ◆ Operational Risk
- ◆ Reputational Risk



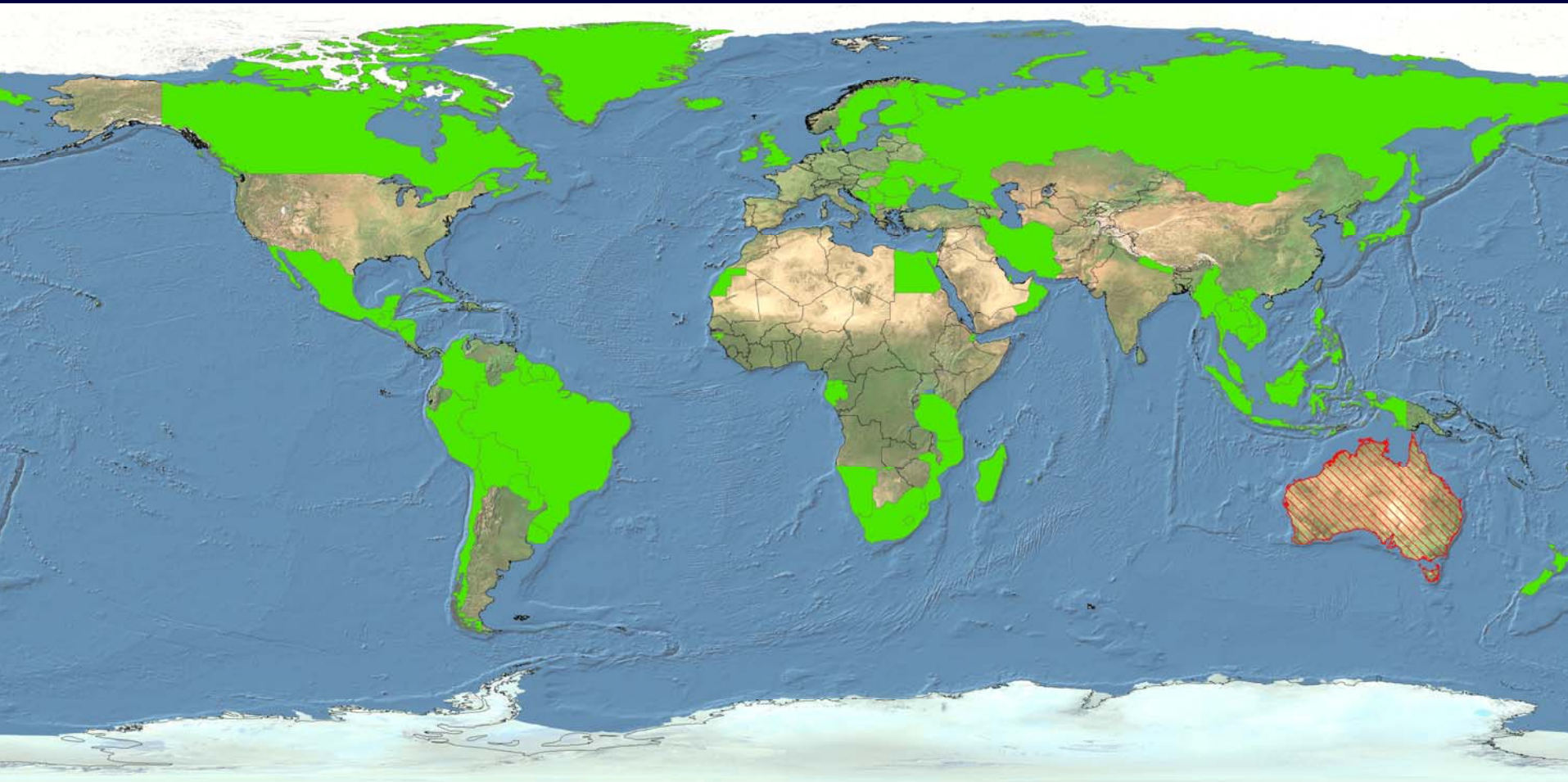
"It takes 20 years to build a reputation and five minutes to ruin it. If you think about that, you'll do things differently." - Warren Buffett

Data Improvements


- ◆ Nearly 14,000 sites improved or added
 - Updates to over 4056 national sites (80% with improved polygon boundary data)
 - Added 9777 new national sites (40% with polygon boundaries)
 - Improved 260 internationally recognized sites



Good quality data in the WDPA



 Good data

 Good data - restricted access



UNEP



WCMC

Conclusions



- ◆ A busy past 19 months
- ◆ Some hiccups
- ◆ Set to deliver in Q1 2008
- ◆ Built important relationships
- ◆ Road map to the future
 - Info from global to site level for conservation and private sector (IBAT/BID)

Thank You!