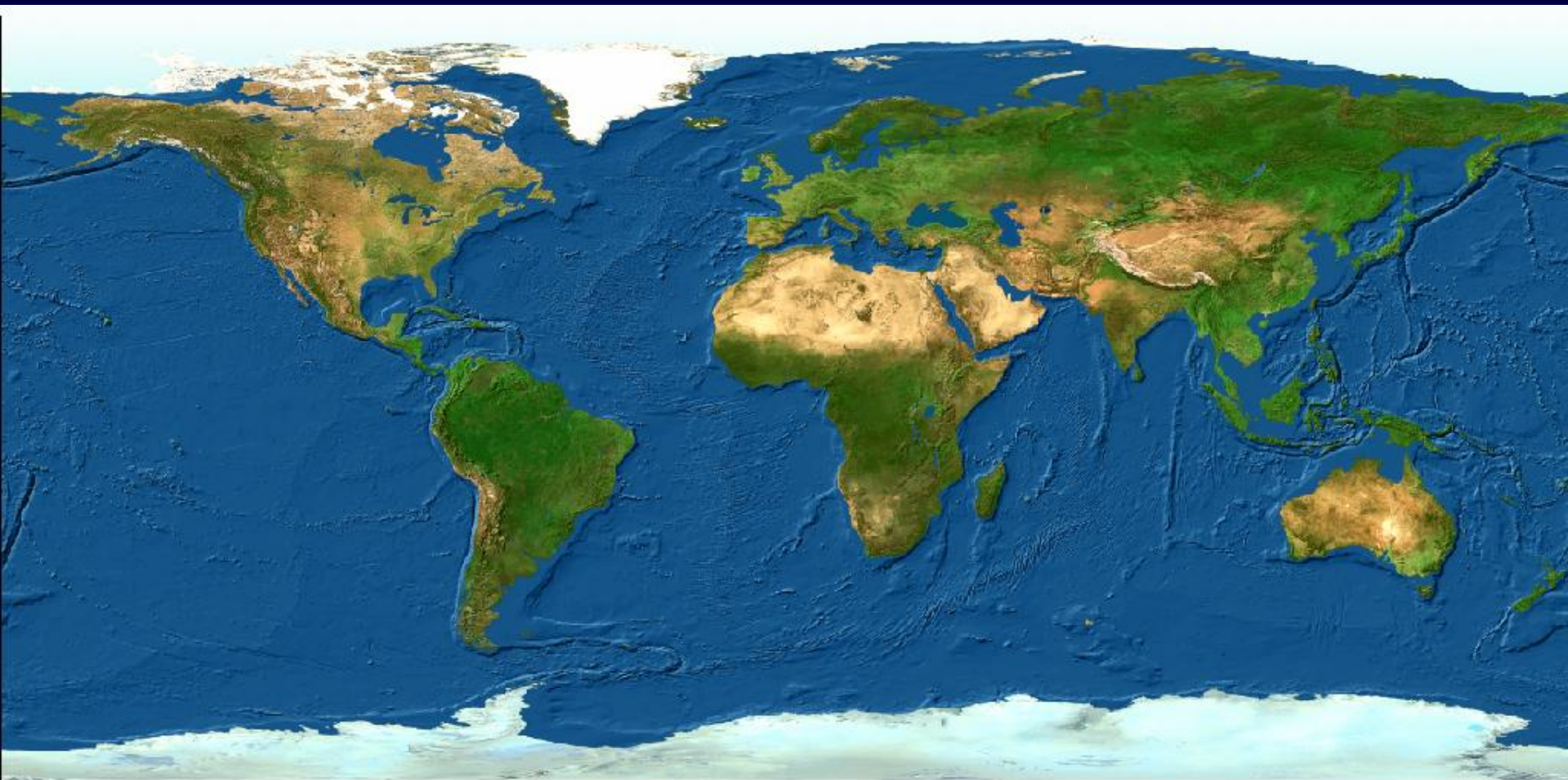


The Private Sector, Biodiversity and Proteus 2012

Presentation to Proteus Partners

March 30th 2007

Once a Green Field Site

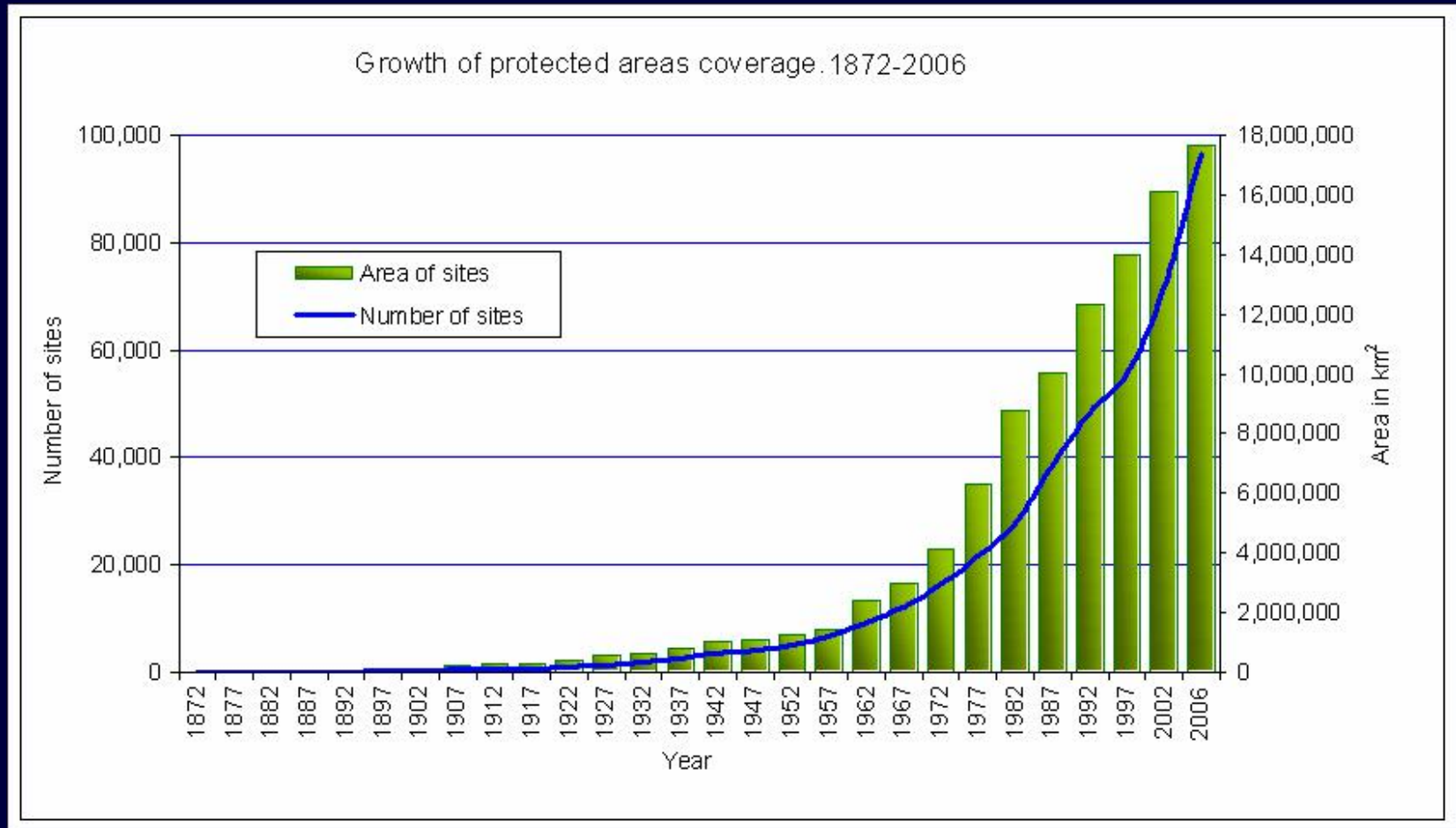


Now used by 6 billion people



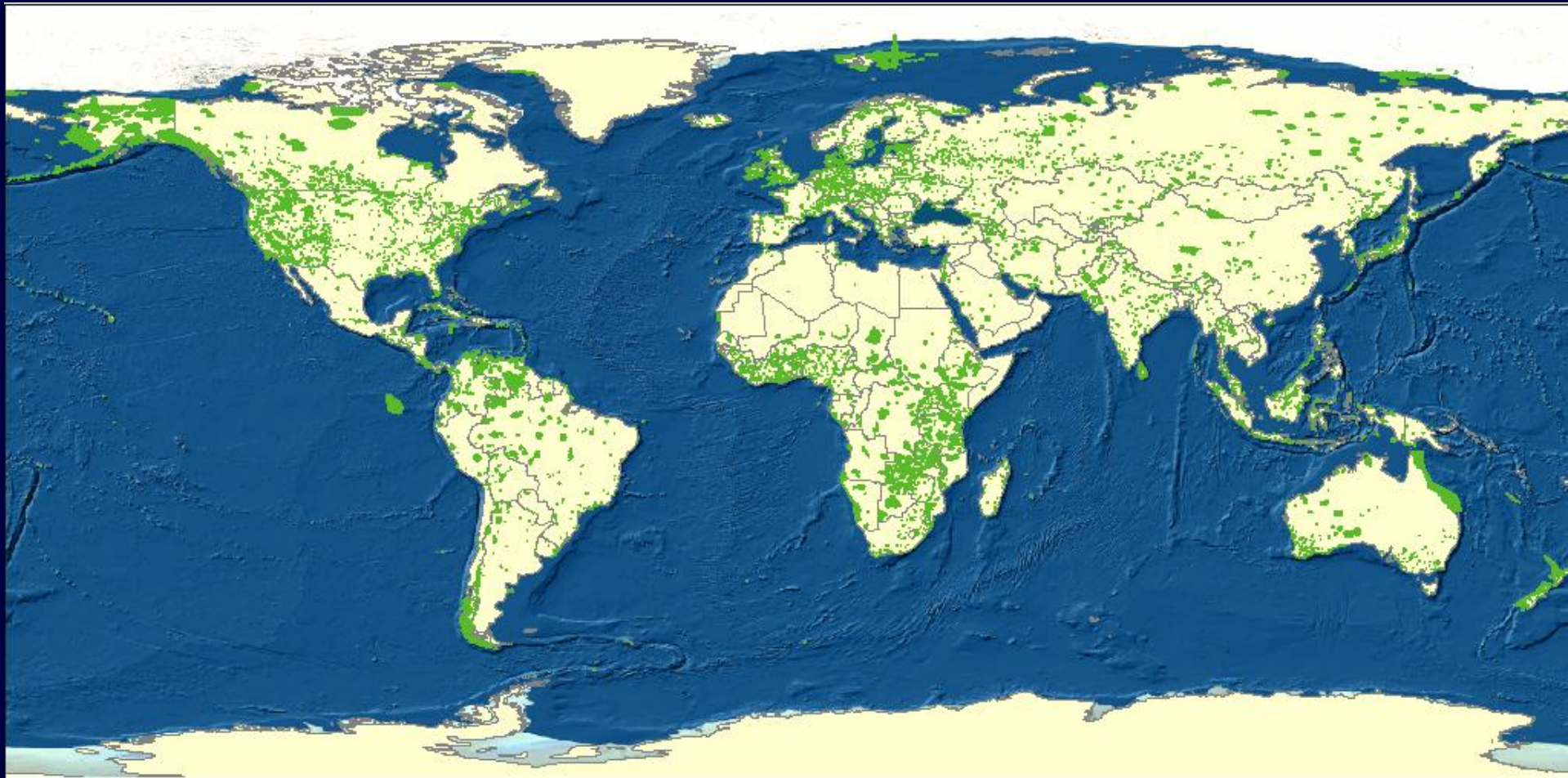
Protected Areas...

Protected Area coverage is growing exponentially...



The World's Protected Areas

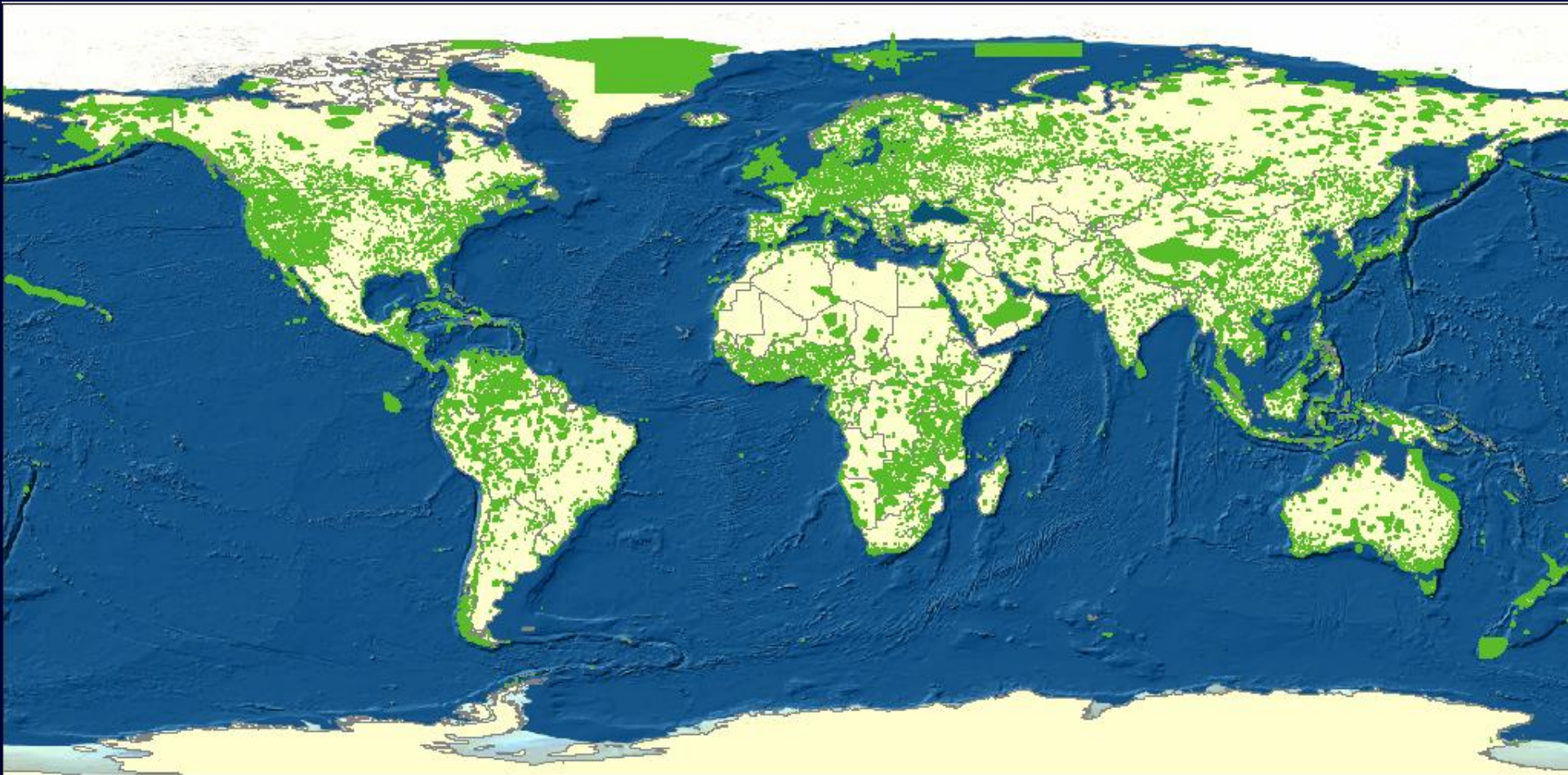
1980: 40,000 protected areas covering 7,000,000 km²



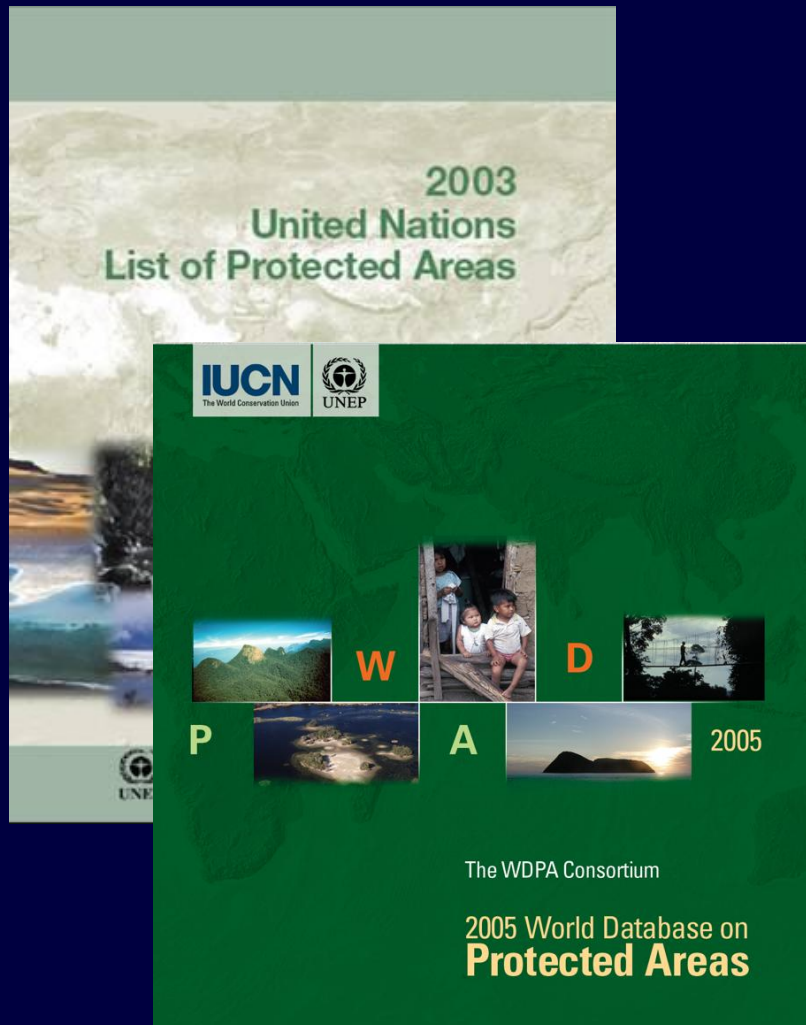
The World's Protected Areas

1980: 40,000 protected areas covering 7,000,000 km²

2006: 100,000 protected areas covering 18,000,000 km²



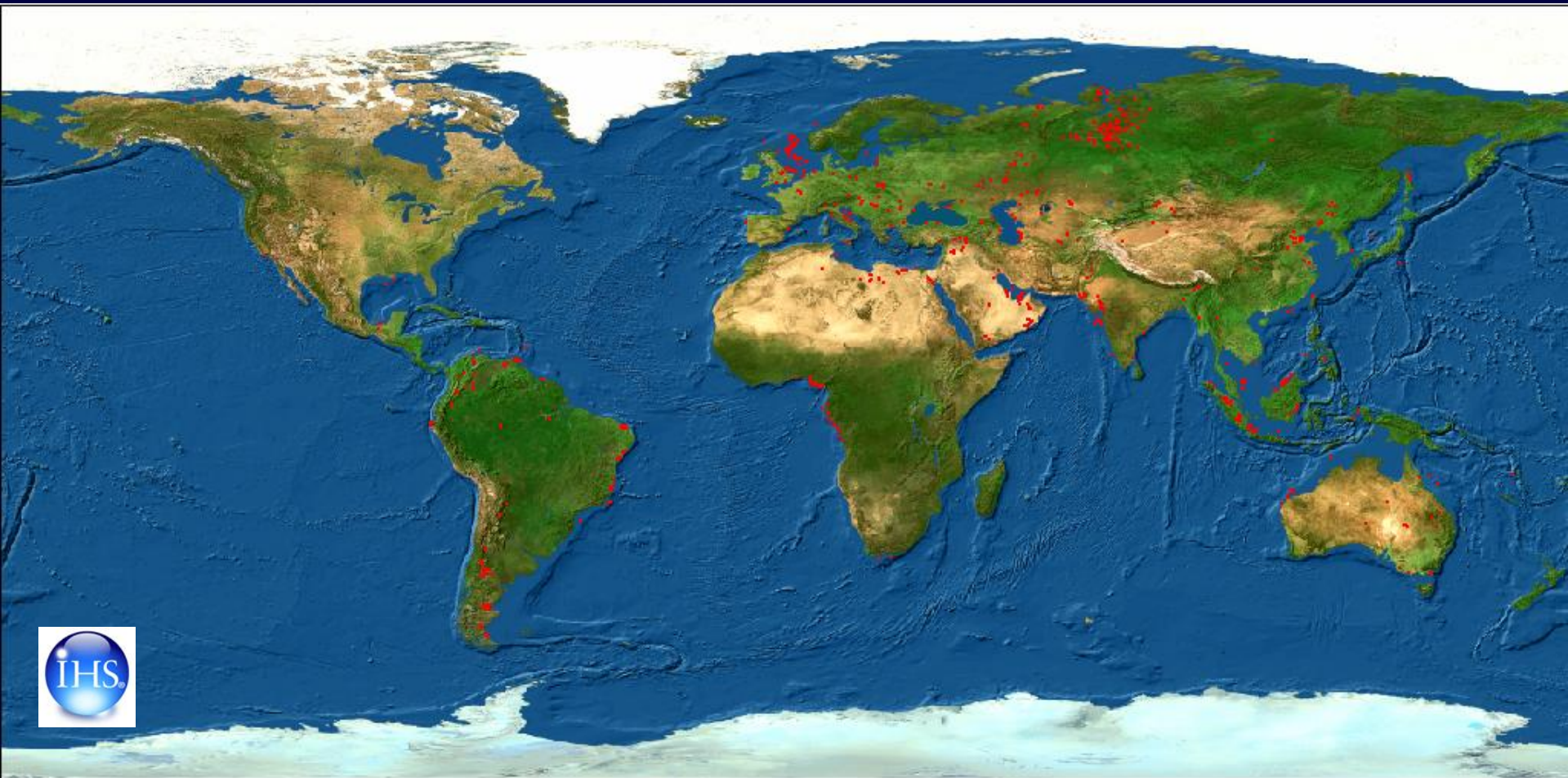
World Database on Protected Areas (WDPA)



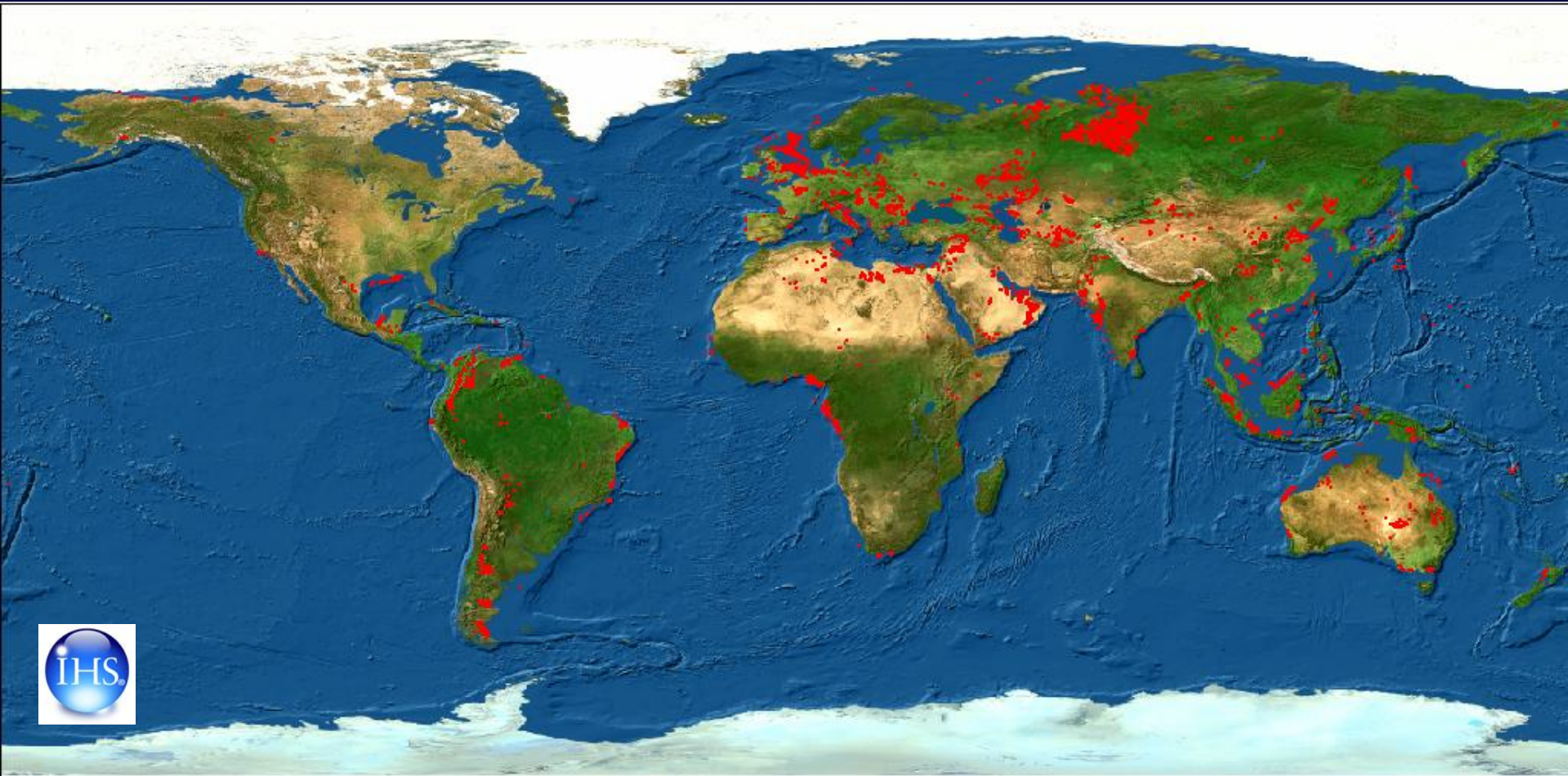
- Most comprehensive global dataset on international, national, regional and local listed areas
- Managed by UNEP-WCMC in partnership with the IUCN World Commission on Protected Areas (WCPA) and the WDPA Consortium
- Funded by the Proteus Partners

Extractive industry....

Oil and Gas Wells Drilled... ...1980

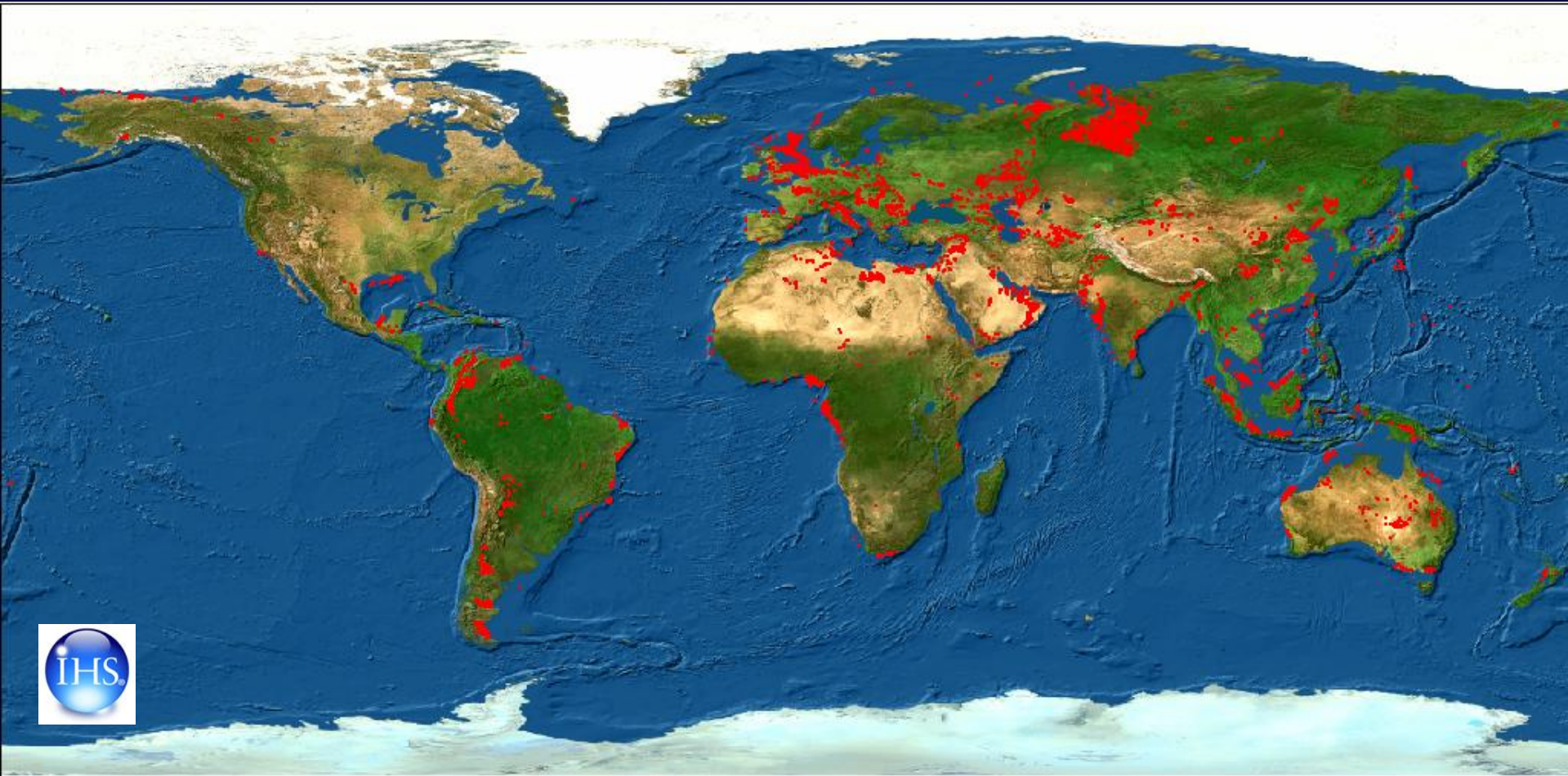


Oil and Gas Wells Drilled... ...1980, 1985



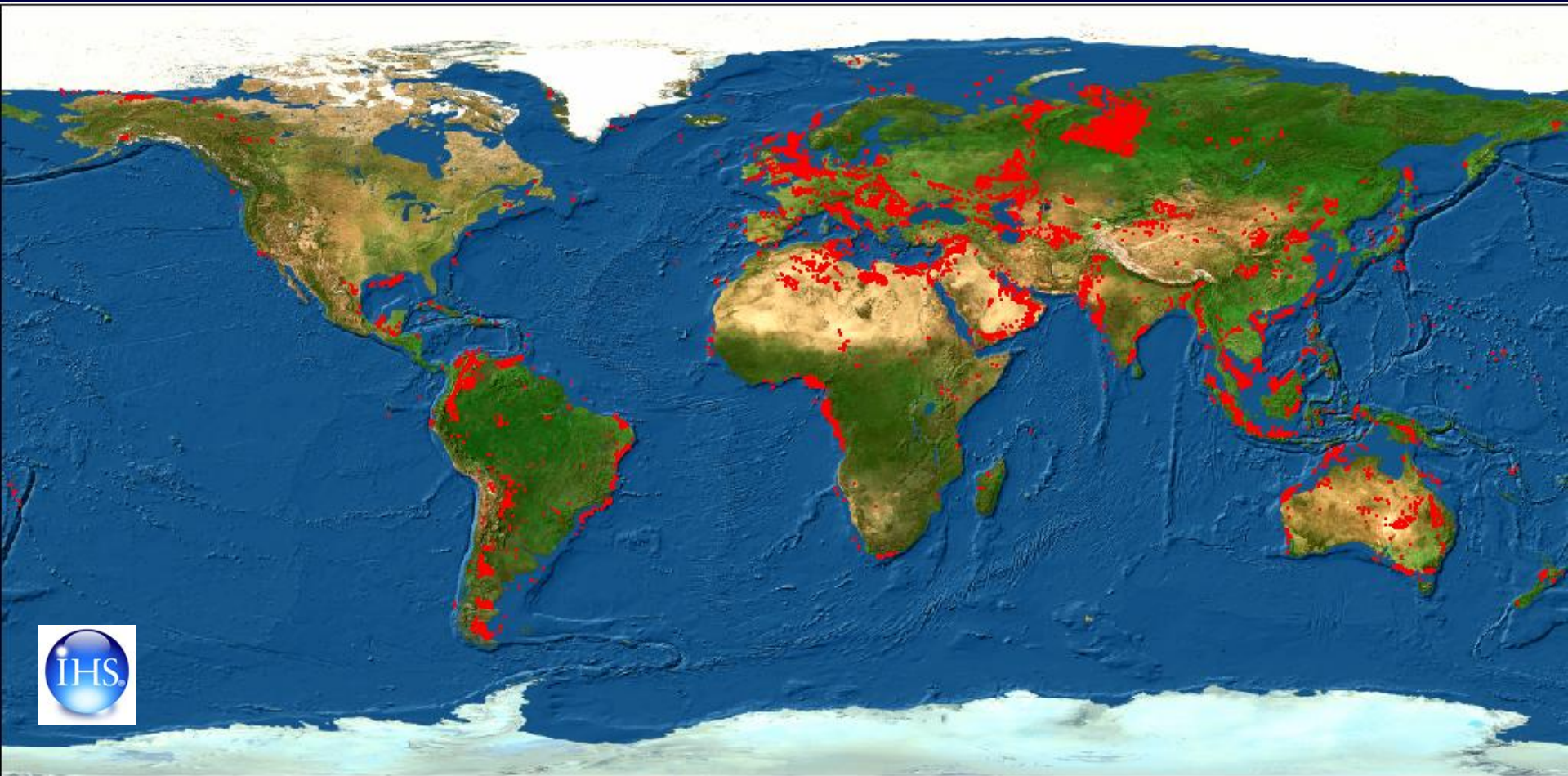
Oil and Gas Wells Drilled...

...1980, 1985, 1990



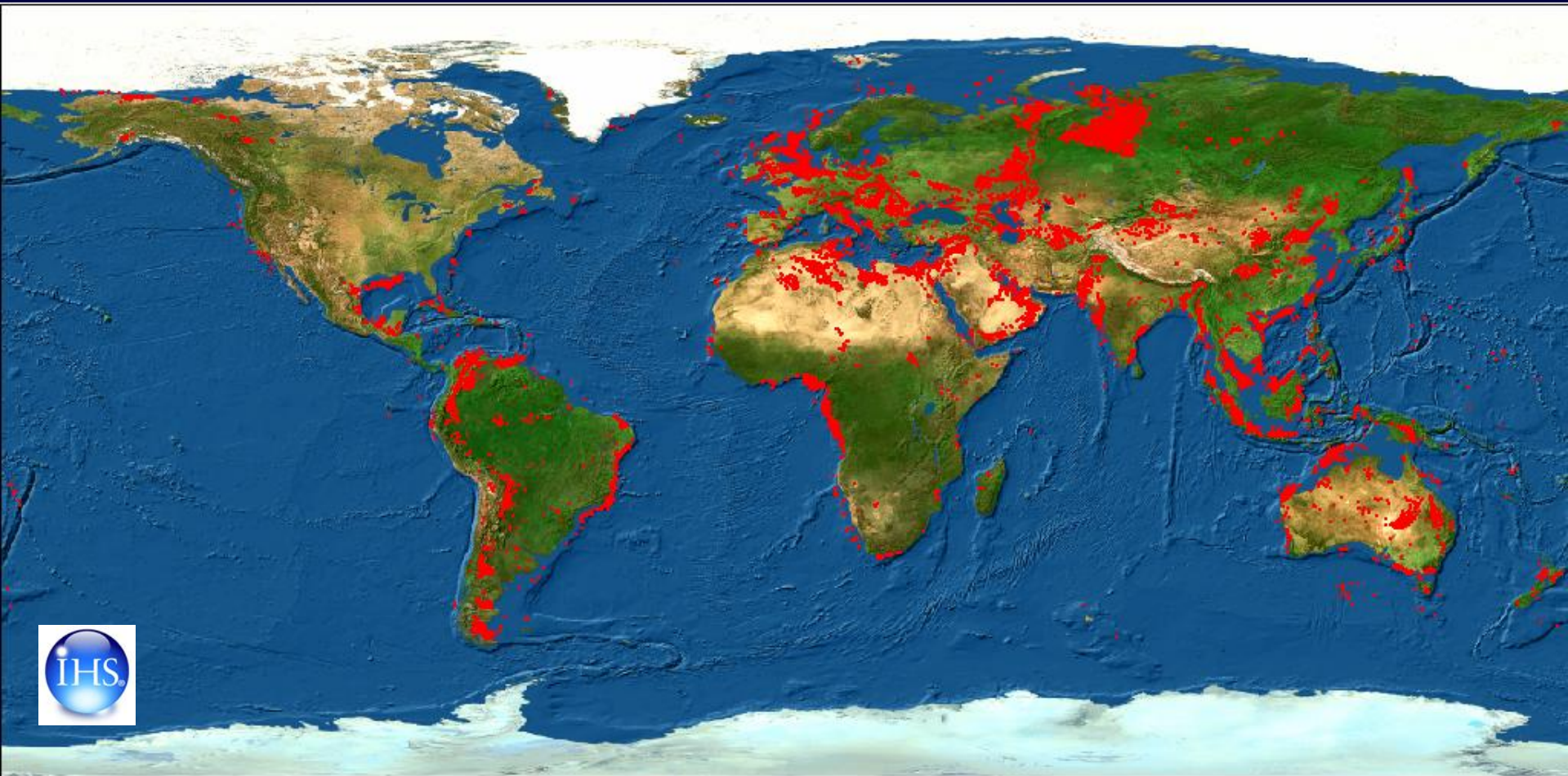
Oil and Gas Wells Drilled...

...1980, 1985, 1990, 1995



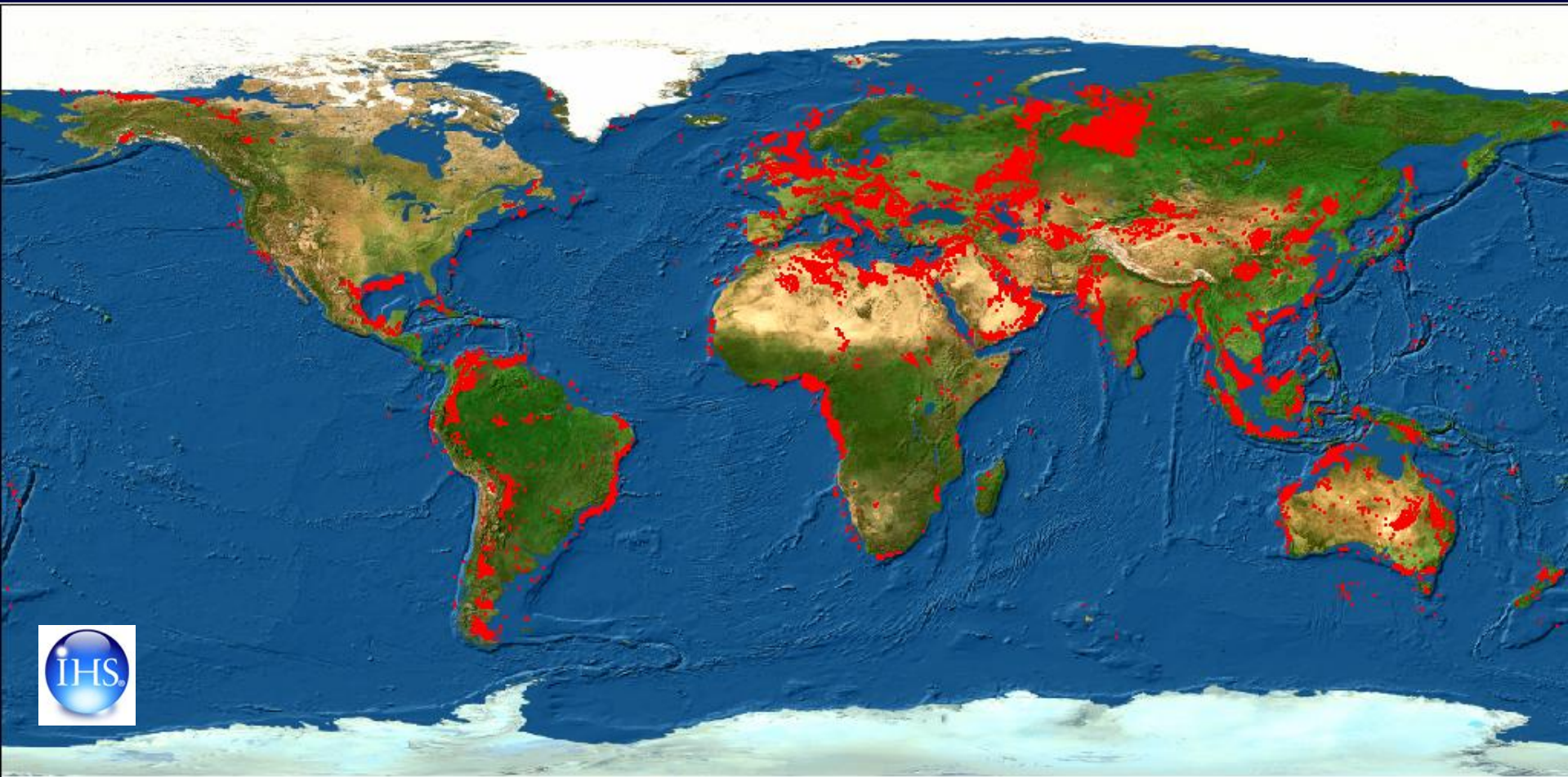
Oil and Gas Wells Drilled...

...1980, 1985, 1990, 1995, 2000

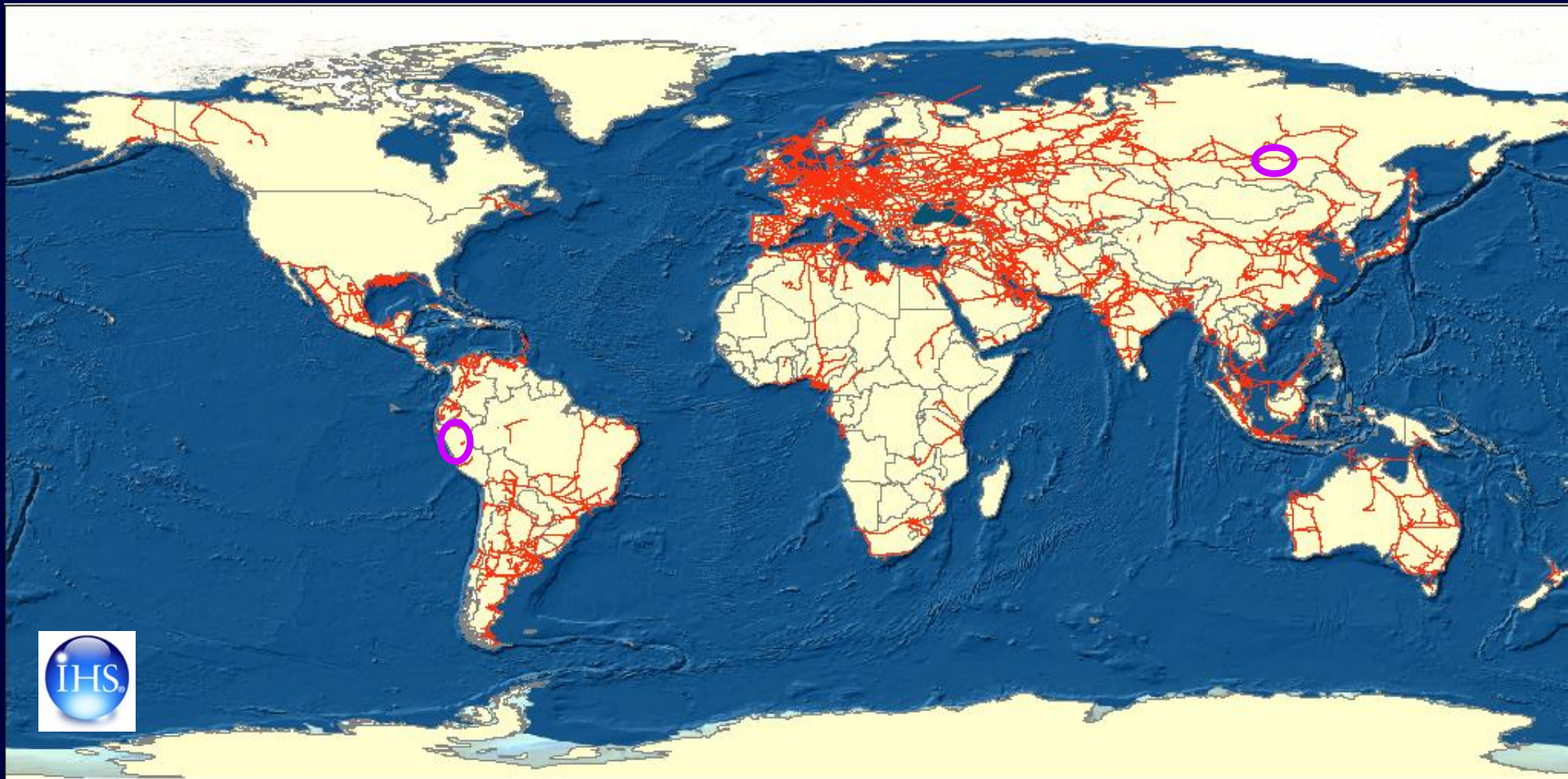


Oil and Gas Wells Drilled...

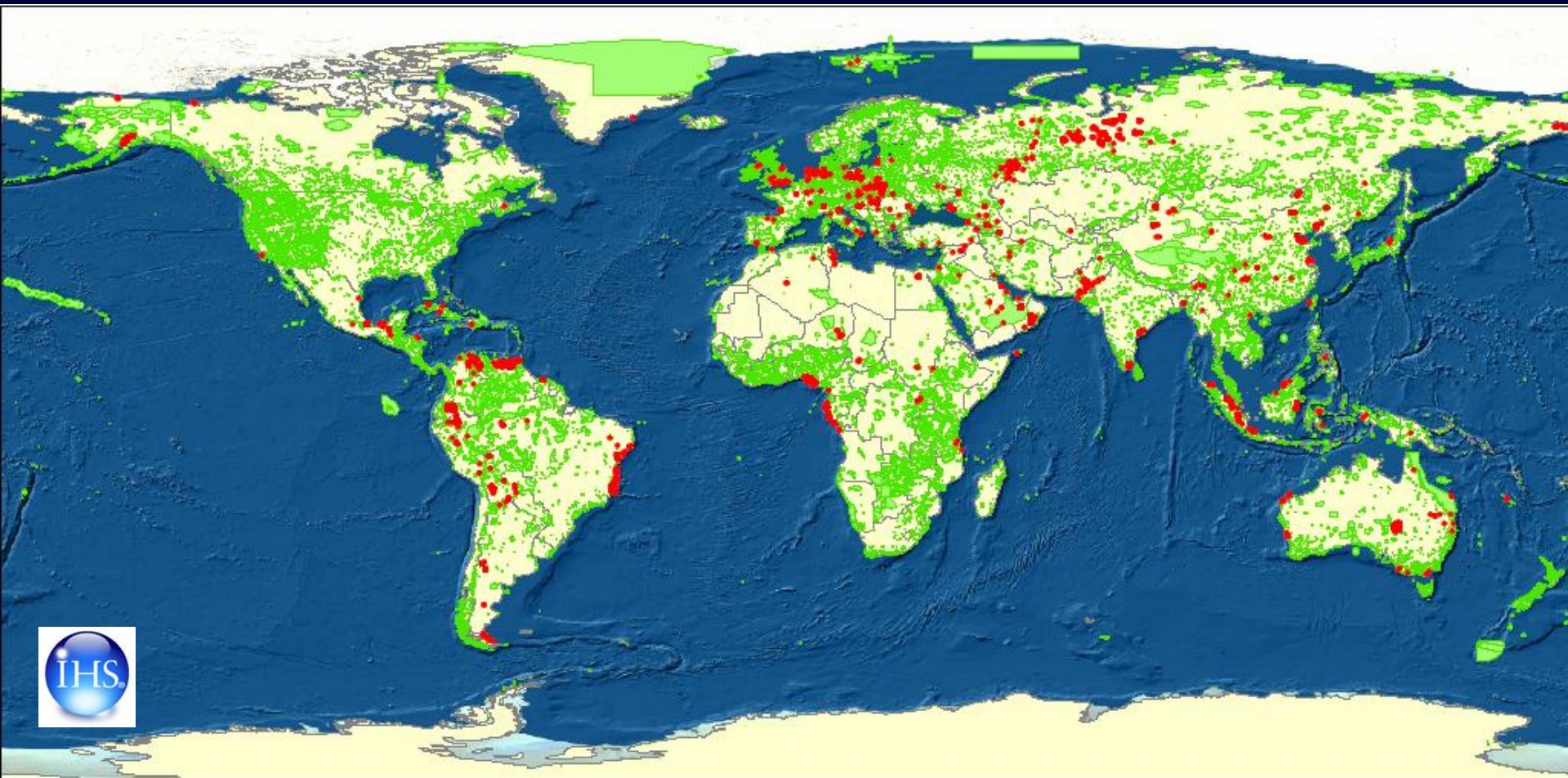
...1980, 1985, 1990, 1995, 2000, 2006



Oil and Gas pipelines in all countries, 2006

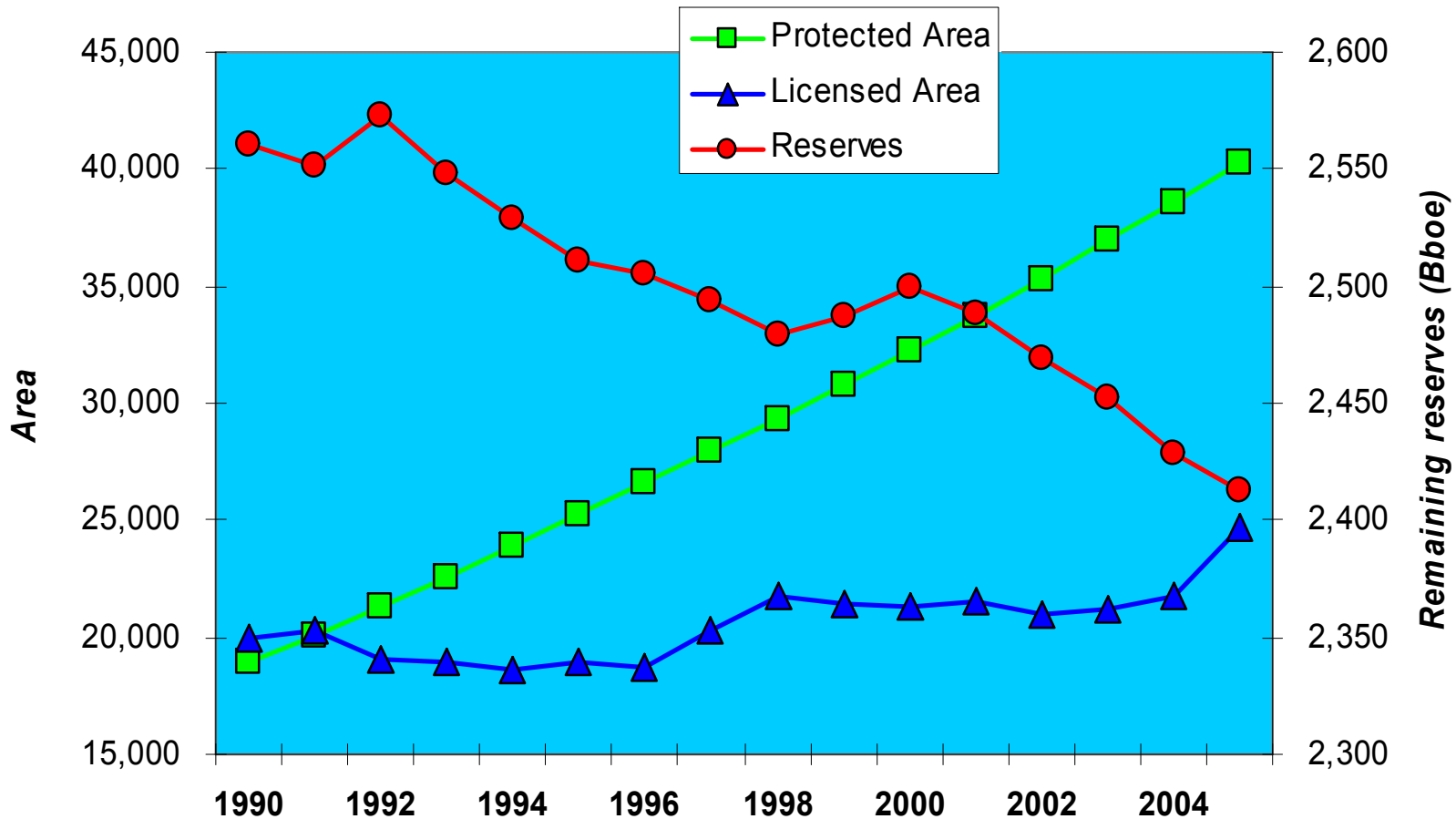


1991-2006: just 6% of wells drilled were within protected areas... that's **9,300** wells worldwide



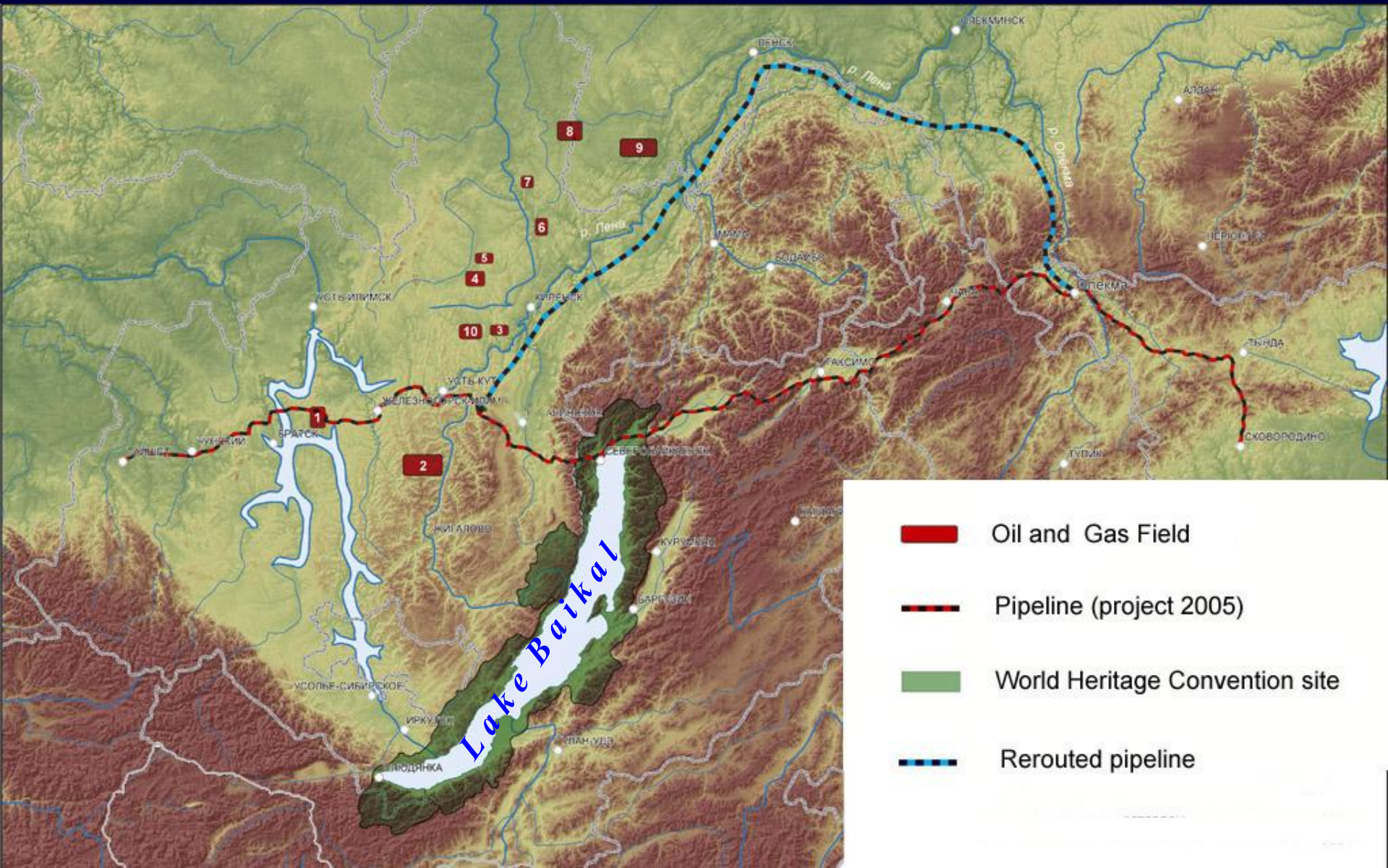
On parallel tracks....

Evolution of Protected areas and E&P activity 1996-2005

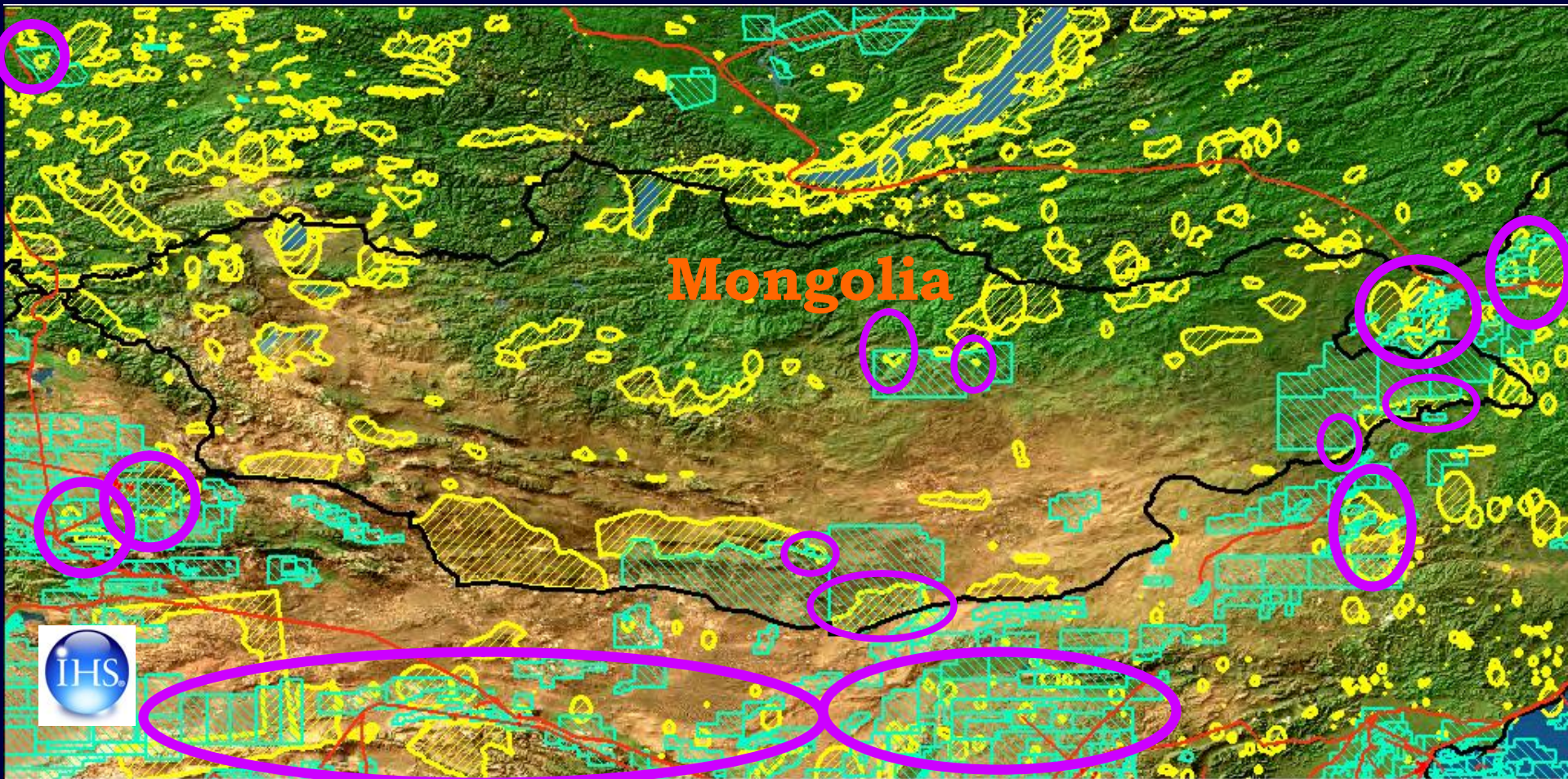


Some Examples...

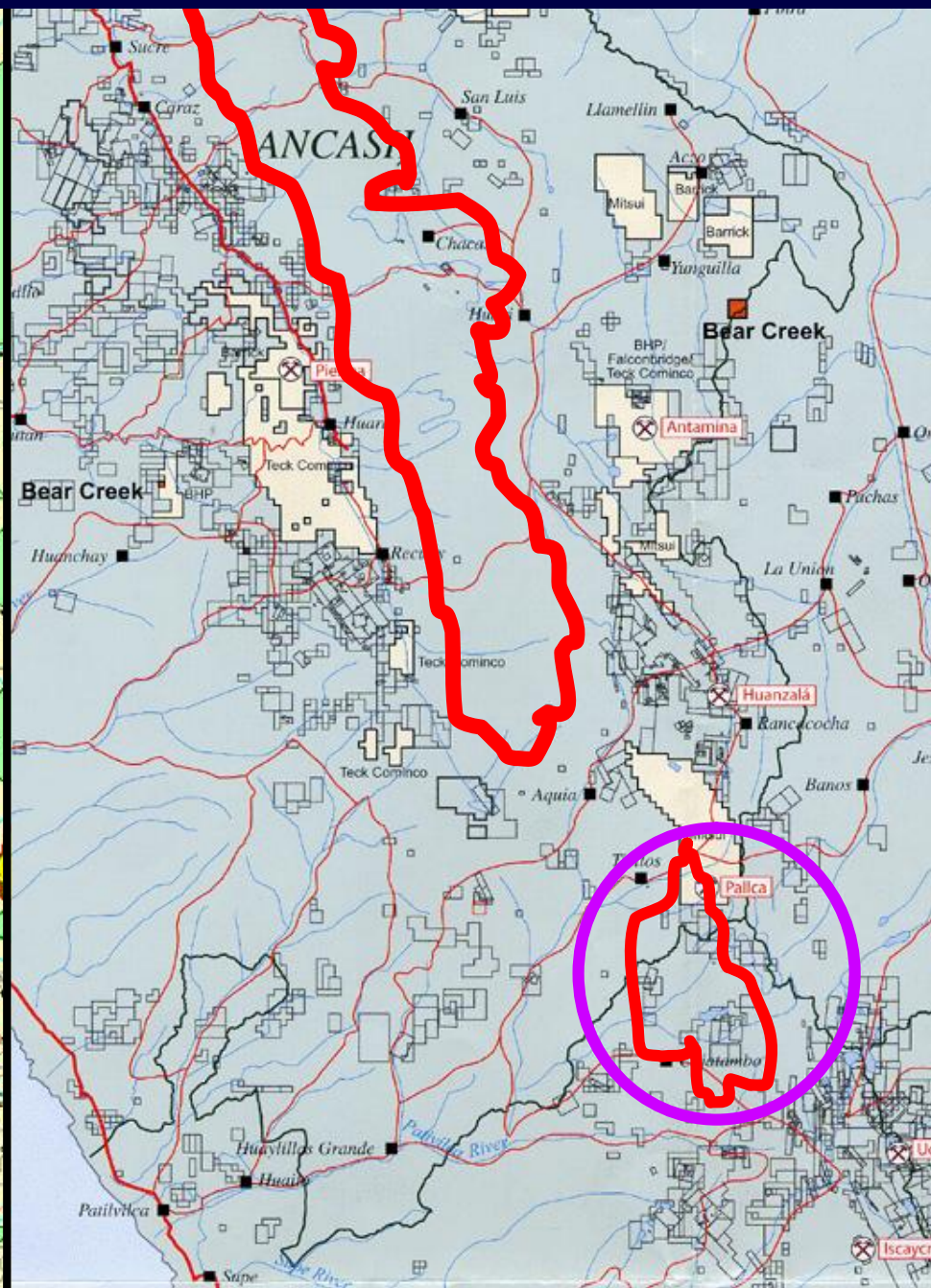
Siberia-Pacific Ocean Pipeline: Lake Baikal



Overlaying protected areas and energy concessions....



Overlaying protected areas and m&m concessions



Proteus.....

What is Proteus?

- Proteus is a 5 year partnership between UNEP-WCMC and a number of corporates.
- It aims to upgrade the Centre's technical capacity and make important biodiversity information more available.
- In 2006 all the funding contributed by Proteus Partners was invested in rebuilding the WDPA.

The priority for Proteus is.....

- A new database with open architecture to encourage collaboration
- Up-to-date, accurate and comprehensive data for all the world's protected areas
- Quality assurance on core data
- Data that is freely available to all users
- A sustainable business model for ongoing data gathering, curation and serving...

Vision for Proteus 2012

- Once we have a functioning WDPA (early 2008) the **first objective** of Proteus 2012 will be to improve the quality/quantity of data in the WDPA
- The **second objective** is to create the framework within which a wider range of biodiversity data is aggregated, analysed and distributed
- Proteus 2012 will work with NGO, national and regional partners to assess information needs and facilitate a new distributed data model
- Proteus 2012 will support partner data processes and create valuable new outputs
- Proteus 2012 will set clear targets and allocate funds allocated in a transparent manner

How Proteus 2012 will work.....

UNEP-WCMC as a convenor & facilitator

Jan
2008

for a Conservation Commons initiative

2012

Second objective: to create bring together information on other important areas for biodiversity based on threatened species

WDPA + possibles such as Natura 2000, M&B, TBAs, Corridors, WWF Ecoregions, IBAs, EZE, CI KBAs, critical ecosystems

Private Sector Partners & freeriding...

+ conservation data providers

Earth Summit

Set and meet targets - e.g.

100% polygons WDPA I&II

80% polygons Ramsar

70% M&B Reserves

80% E species mapped

40% distributed data model

Commercial data restriction lifted (?)

2009

CD
Release

2010

CD
Release

2011

CD
Release

CD

Release

Summary of Proteus 2012

Jan
2008

- A UN/Private Sector/NGO partnership to upgrade & make available biodiversity data
- A transparent association of data providers and an important user community
- Data providers to get their assets upgraded
- The Private Sector will get quality and its priorities addressed
- Open opportunities for the private sector to contribute business skills and other assets
- The international community will get important new product(s)
- No commercial restriction on key data
- Significant image-building opportunities
- Free-riding to be discouraged

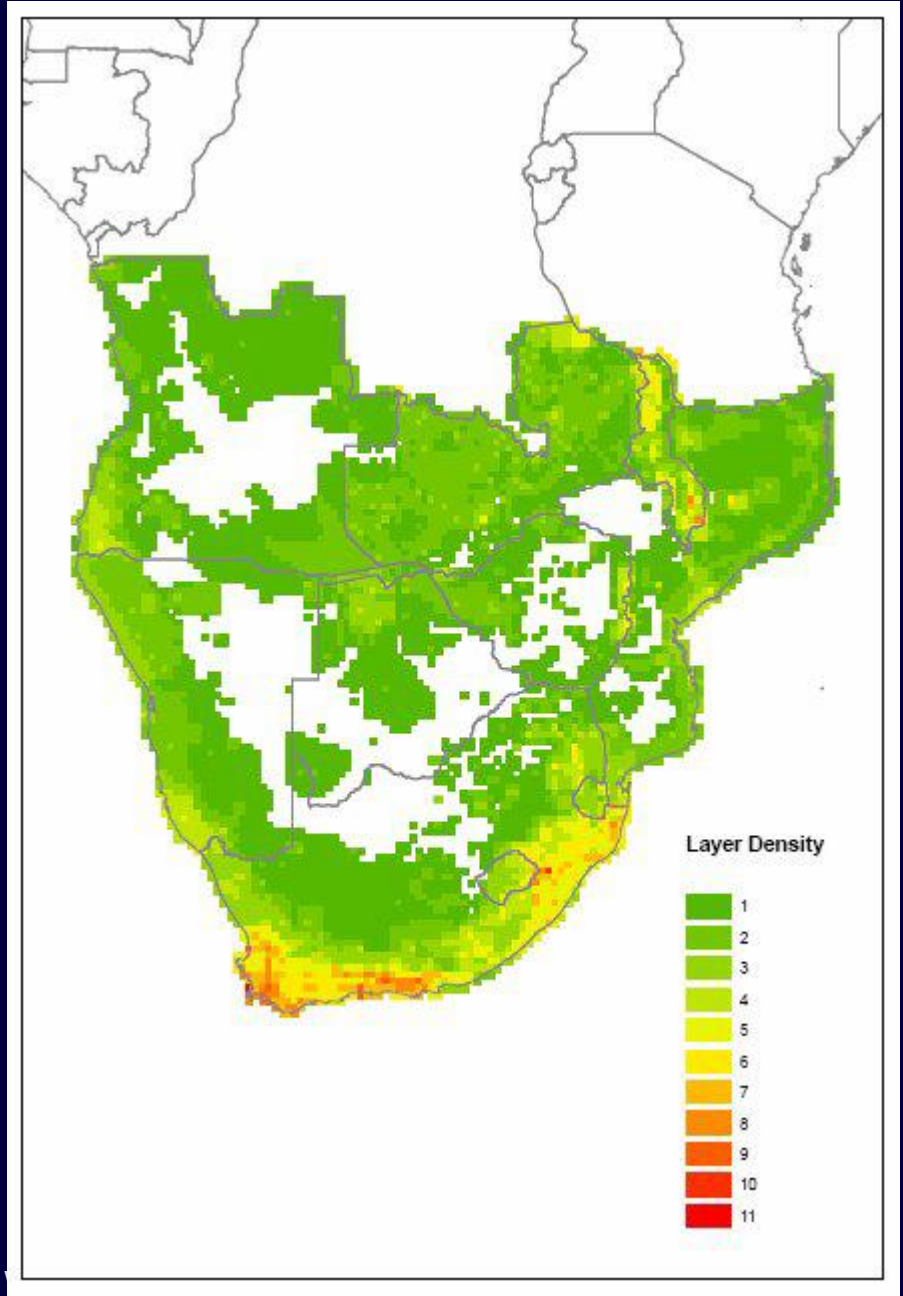
2012

→ Earth Summit

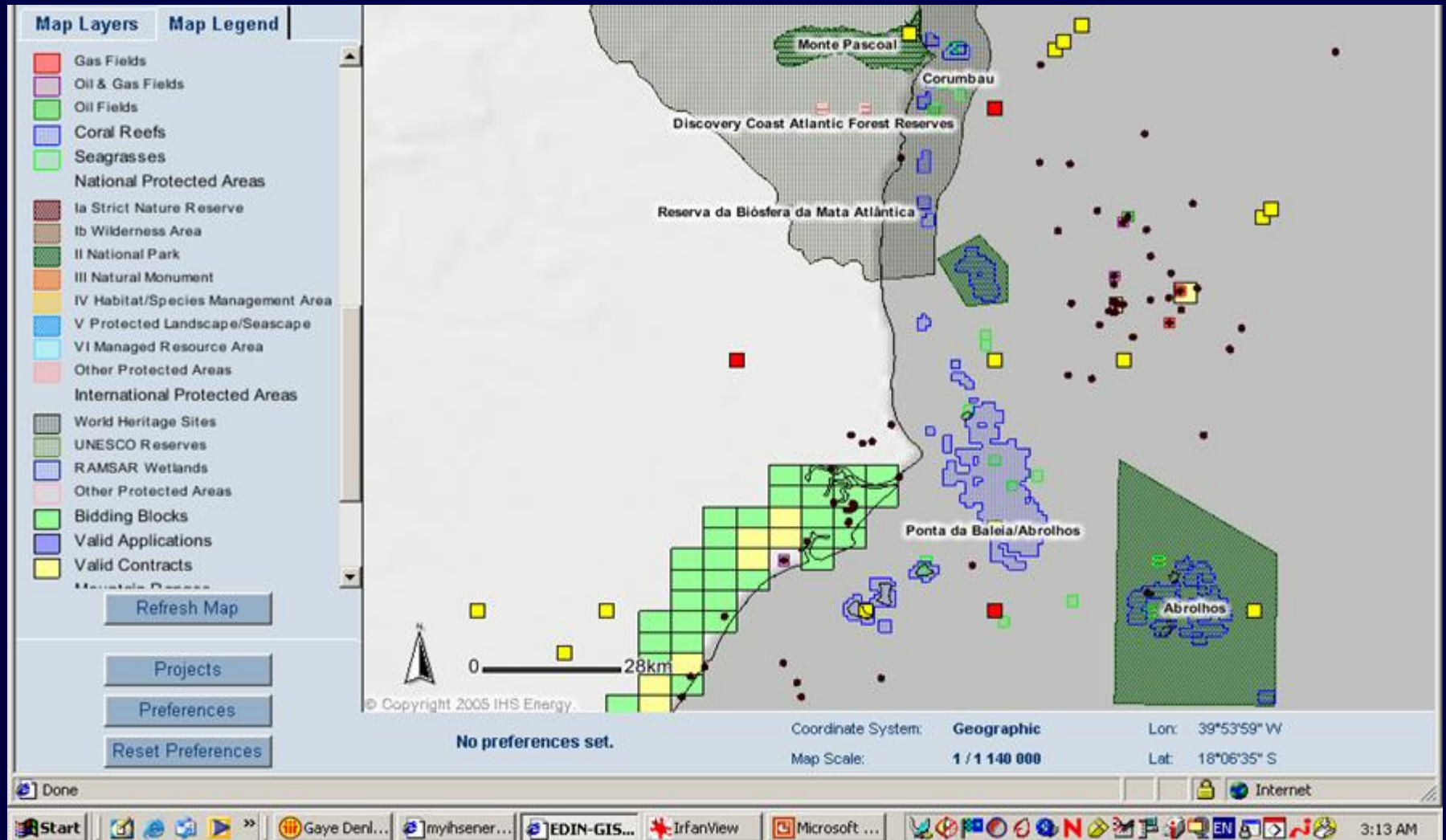
Commercial
data
restriction
lifted

Adding new biodiversity data to the mix....

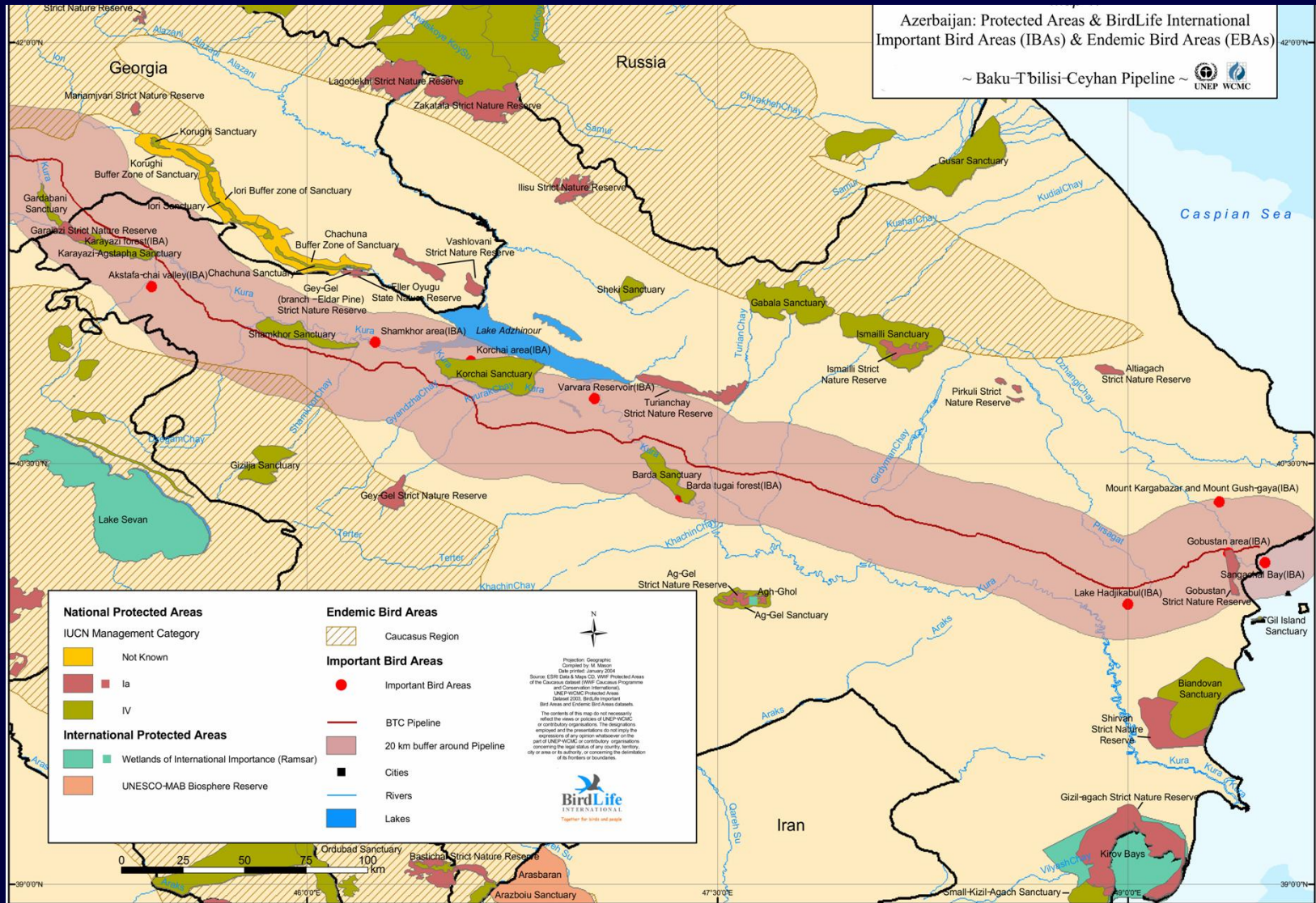
Layered Biodiversity Information to highlight areas of maximum risk



UNEP-WCMC, WWF and IHSE: Oil activity with protected areas and critical ecosystems...



Adding bird data to the WDPA for specific projects



Spatial data for species is.....

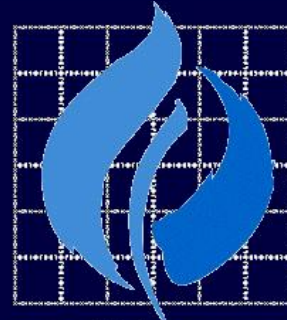
- Generally hard to find (a paradox!)
- Heavily biased towards certain vertebrates
- Possible to combine in different ways
- Interpretation: ‘in the eye of the beholder’
- In need of liberation through a strong collaborative effort!

UNEP-WCMC Objective 3: Sharing Information

- is: *To encourage and facilitate data sharing, interoperability and standards to create accessible web-based information on biodiversity and areas of special conservation significance*
- We are convinced that an alliance with the IBAT partners and IUCN-The World Conservation Union offers the opportunity for Proteus Partners quickly to progress the second of the objectives for Proteus 2012



UNEP



WCMC

A world where biodiversity counts

www.unep-wcmc.org

UNEP World Conservation Monitoring Centre 219 Huntingdon Road Cambridge CB3 0DL United Kingdom