

PROTEUS ANNUAL MEETING

13th – 14th June 2019, David Attenborough Building, Cambridge, UK



WHAT SHOULD PROTEUS LOOK LIKE POST-2020?

Jonty Knox

INTRODUCTION

Neville Ash

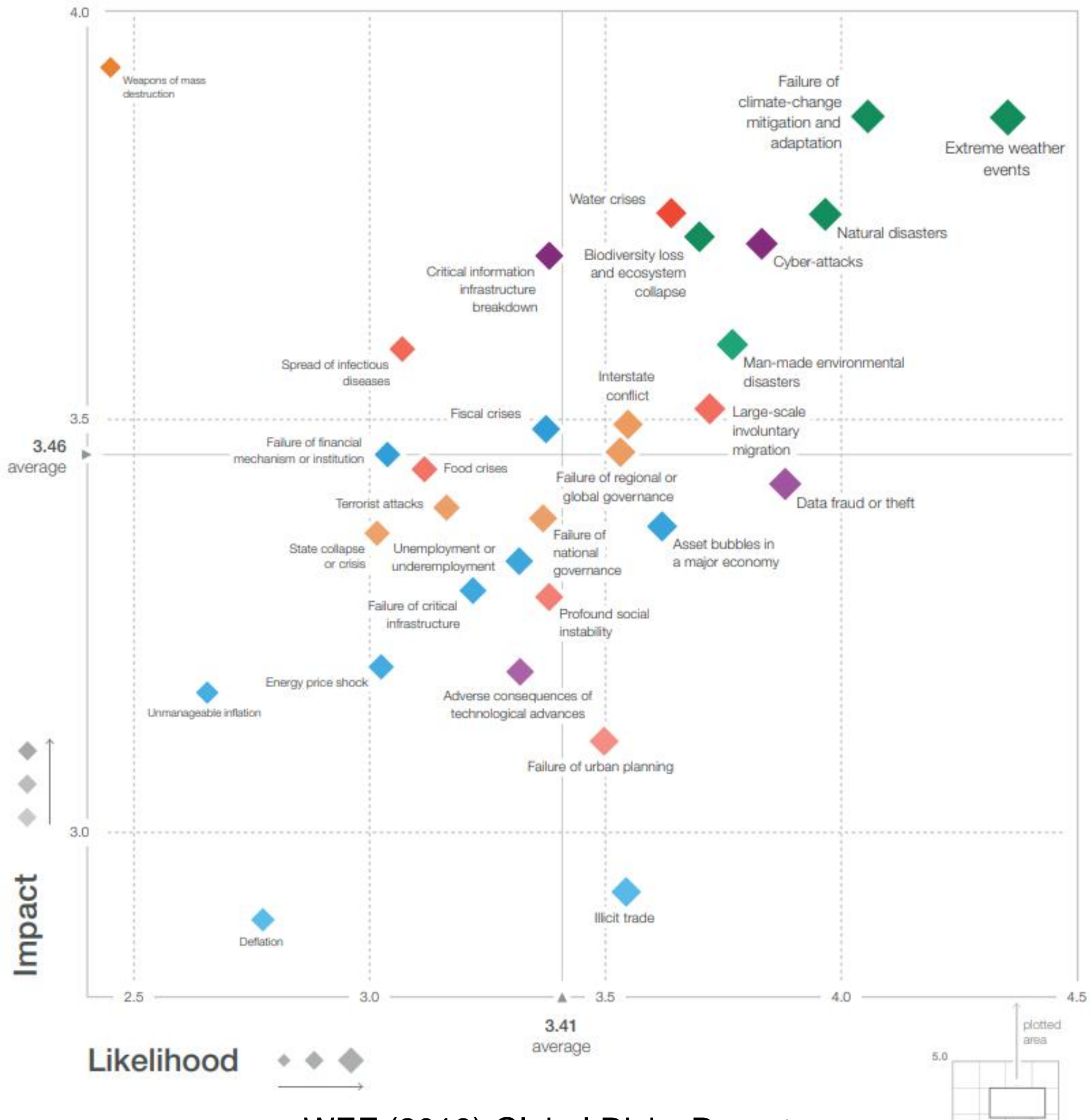
THE PROTEUS PARTNERSHIP

Structure and Workflow Post-2020

Jonty Knox

CURRENT PROTEUS STRUCTURE

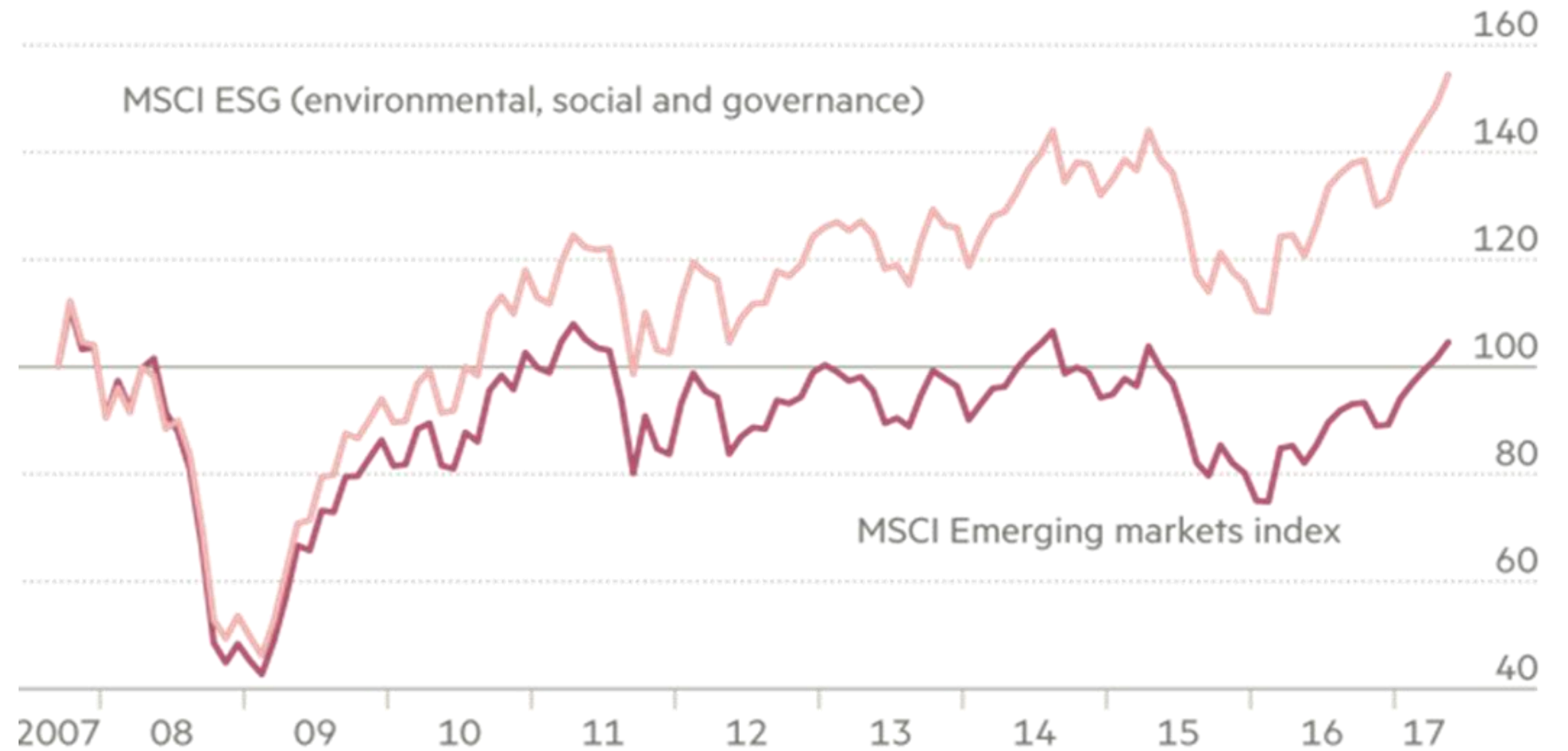
Framing the business case for why biodiversity and ecosystem services matter



WEF (2019) Global Risks Report

Business case:

- Companies adopting sustainability policies consistently outperform competitors



“What we can say now is that the impact [of ESG issues] on risk, volatility and valuation is clearly statistically significant.”

Guido Giese, Executive Director of Equity Research, MSCI

Developing Corporate Capacity

Partners

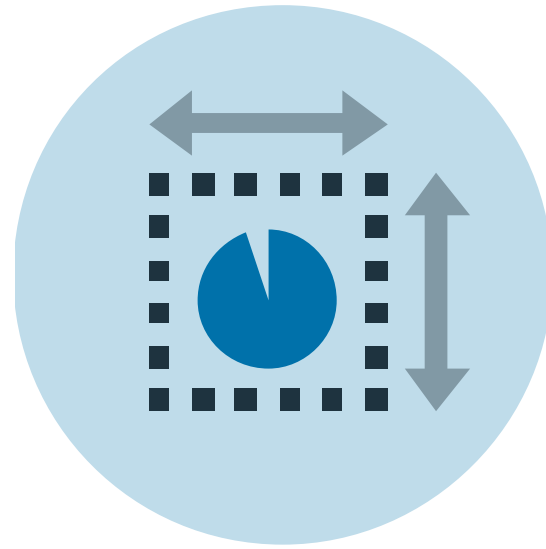


Objectives

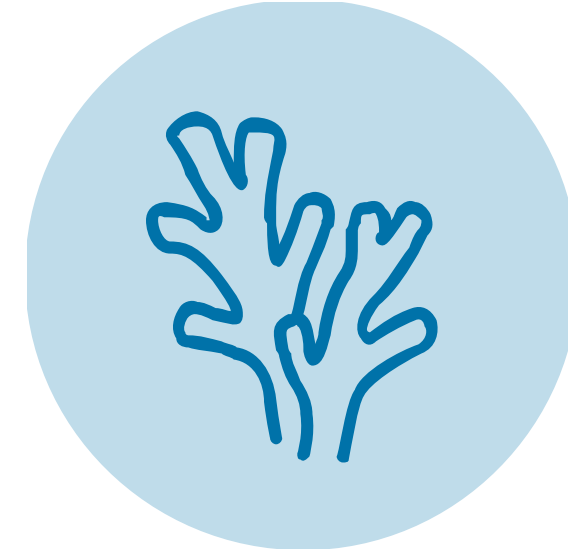
- To improve the World Database on Protected Areas
- To ensure data to support the identification biodiversity features are improved, and support the development and understanding of sites of significant biodiversity value
- To improve the availability of information on coastal and marine biodiversity
- To provide resources which help companies develop capacity to consider biodiversity in the context of the wider landscape



12 companies
from the extractive
sector



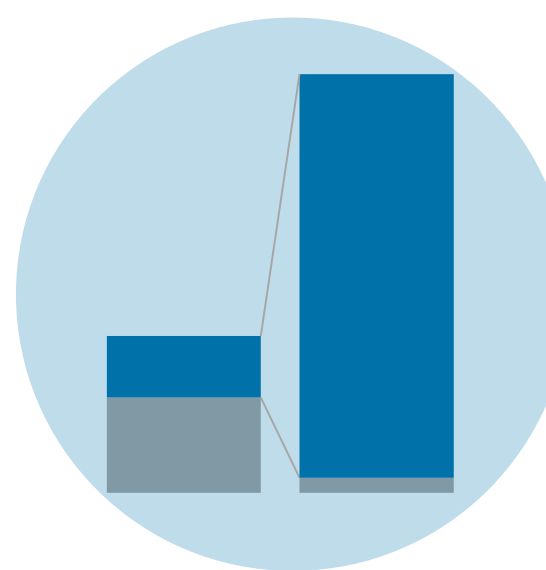
96% records
represented by
spatial boundaries



2.5 million
records of marine
and coastal habitats



**16 years of
partnership**
to improve data



**165% increase
in records**
from 2003 to 2018



>2.1 million km²
of marine and coastal
areas mapped



>£10 million
invested in data

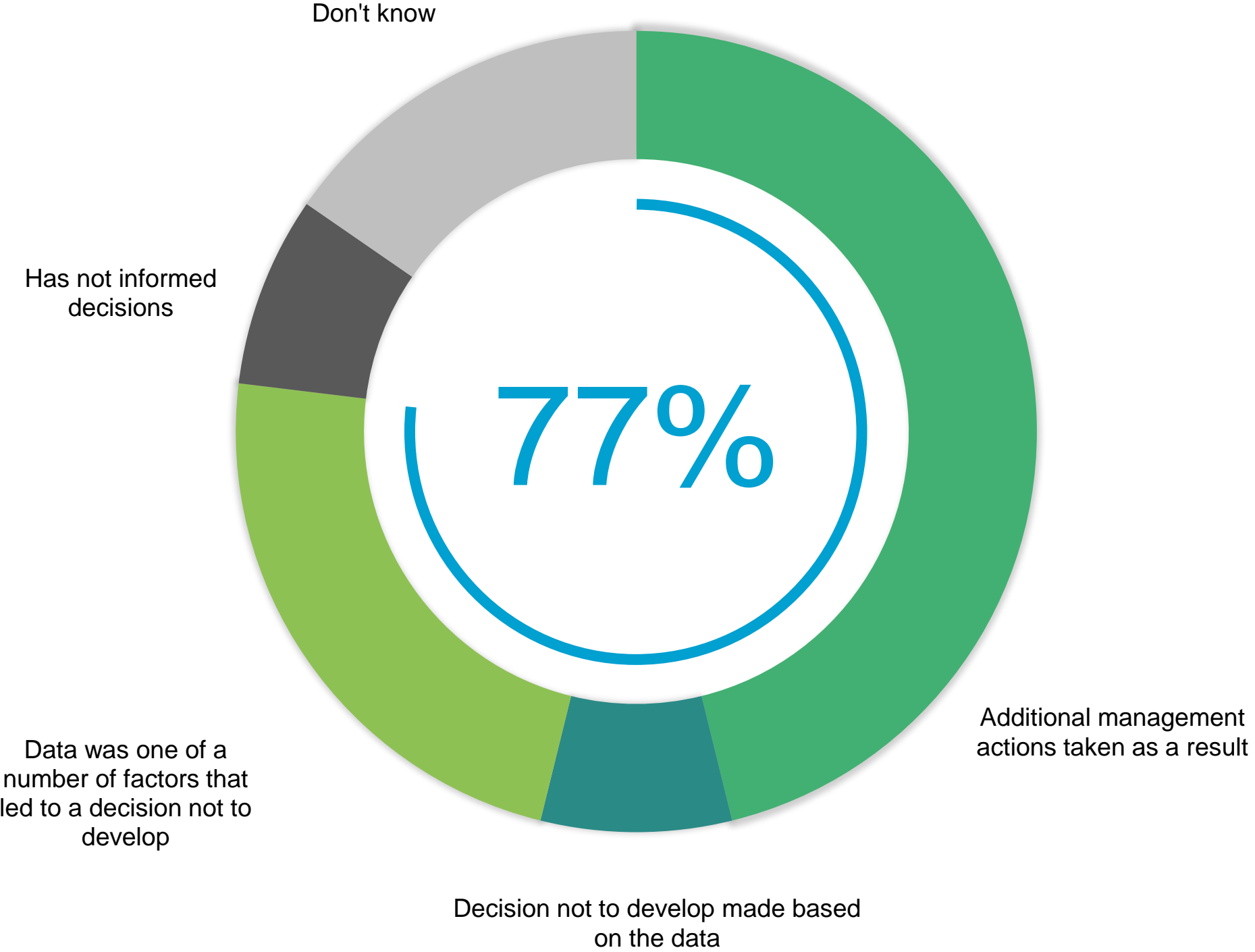
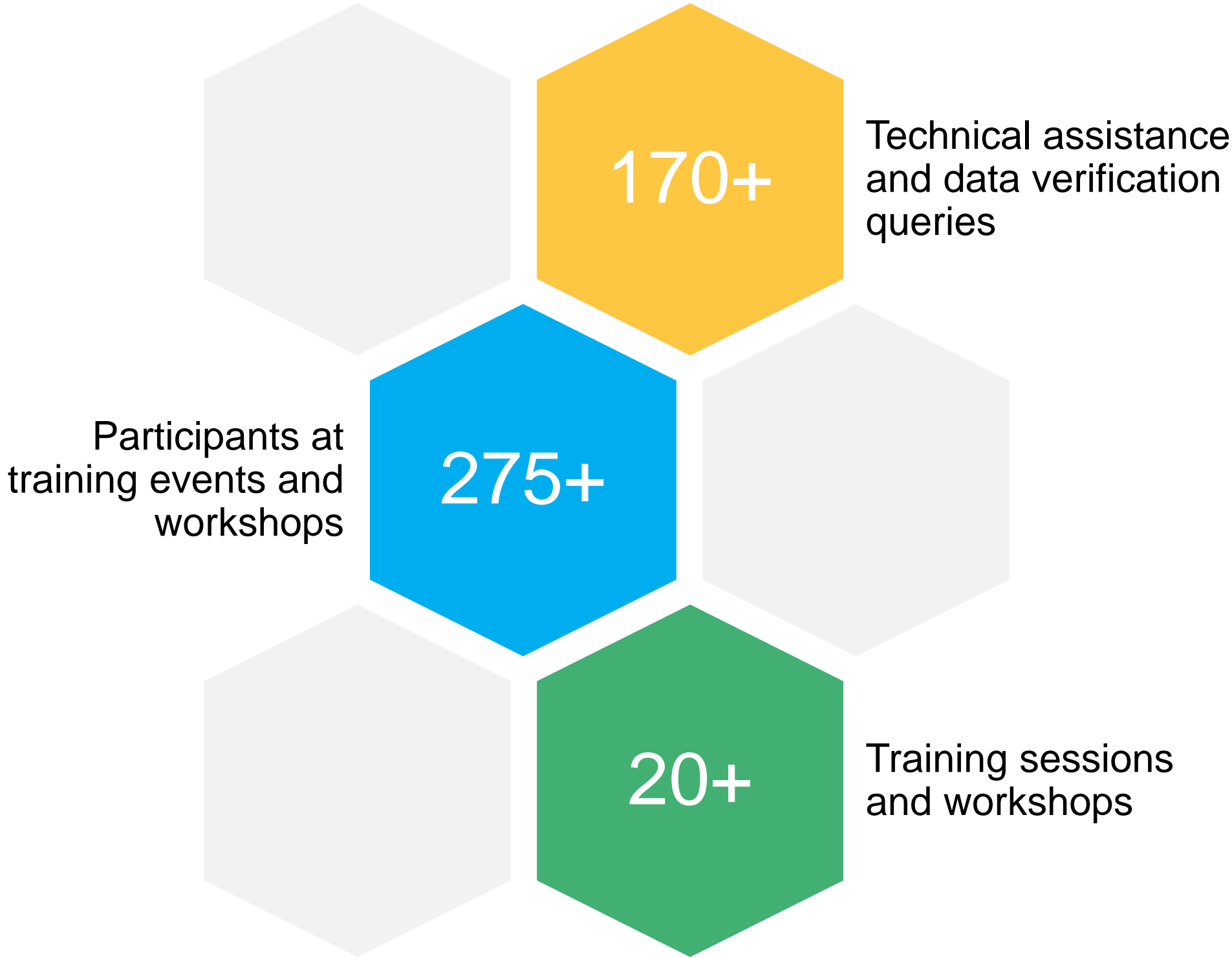


46 million km²
of protected area
coverage

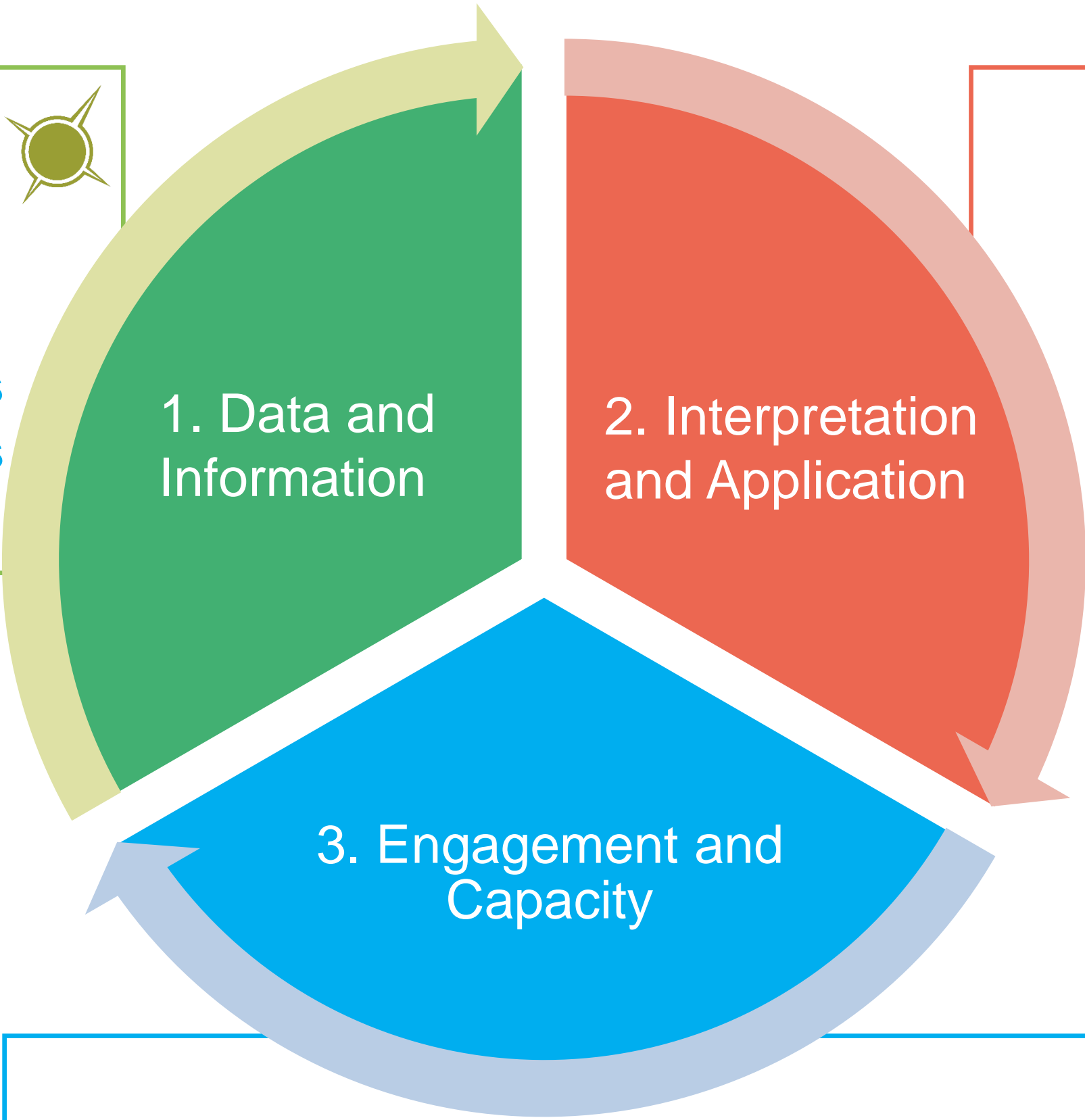


**180 marine
and coastal**
datasets in
Ocean+ data

Developing Capacity & Achieving Impact



Provision of data and information on biodiversity as well as tools to access, interpret and visualise data which meet business needs and suit company processes



Application of biodiversity data and information to the context of extractive company biodiversity impact mitigation processes

Tailored training, support and access to experts to make the best use of biodiversity information

Current Proteus Work Plan



FUTURE CONTENT

Potential Content

Sustainable
Financing for
Quality Data

Restoration
Potential

Biodiversity Data
Repository

Priority Regions

- Modelled products from collated EIA/monitoring data
- New marine and coastal data
- KBA support for designating new areas
- Migratory species data

Sustainable Financing for Quality Data

Background

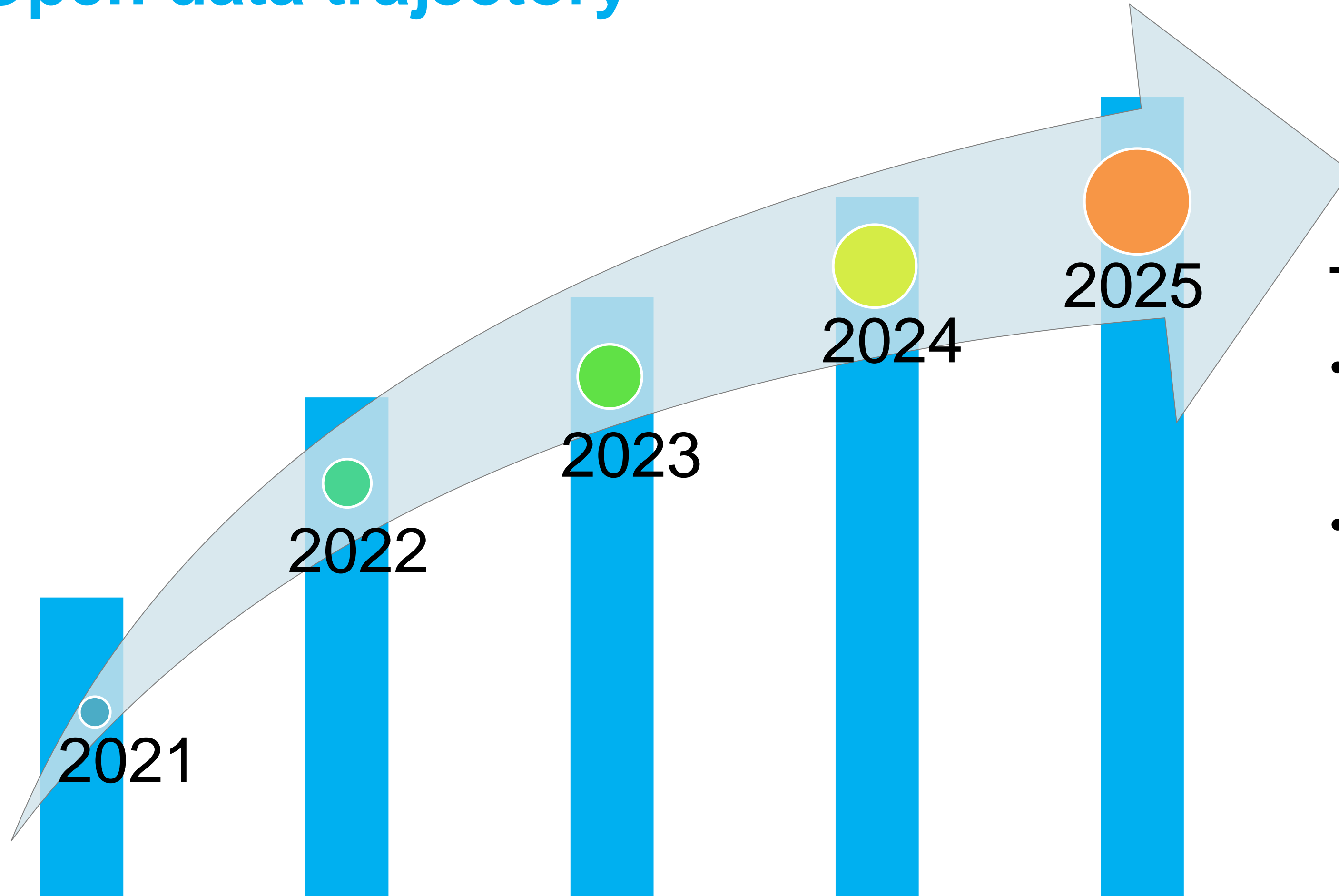
- The world is increasingly moving towards 'Open Data', enabling free access, use, modification and sharing of data for any purpose, by anybody.

Project Proposal

- We intend to make a bold commitment ensuring datasets we maintain are available under a recognised open data licence, and to build the infrastructure required to manage and organise core mandated datasets from third-parties that are required by the post-2020 agenda.



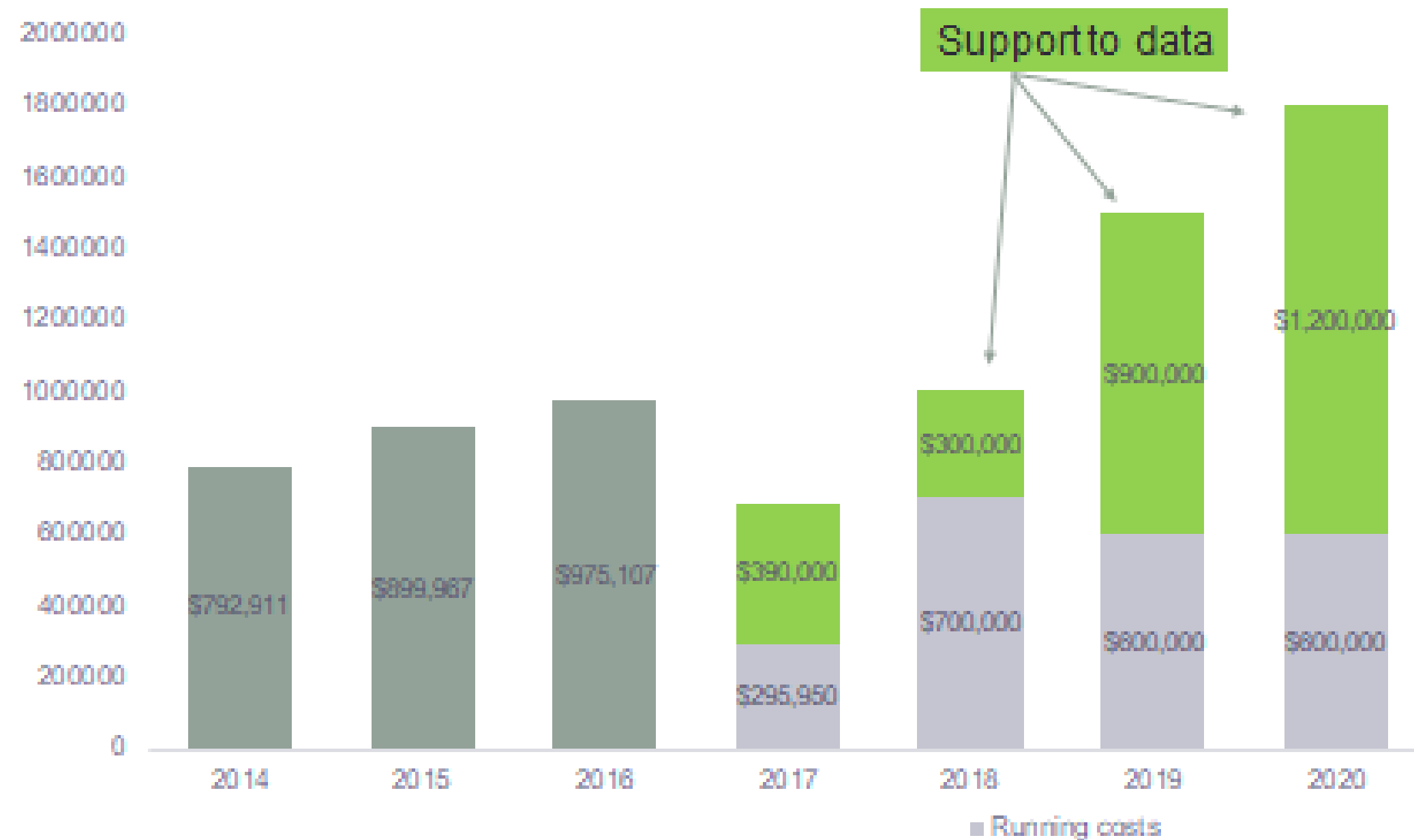
Open data trajectory



Trajectory

- The move towards open data won't be instant.
- There will be a trajectory over the next five years as the centre gradually transitions towards fully open

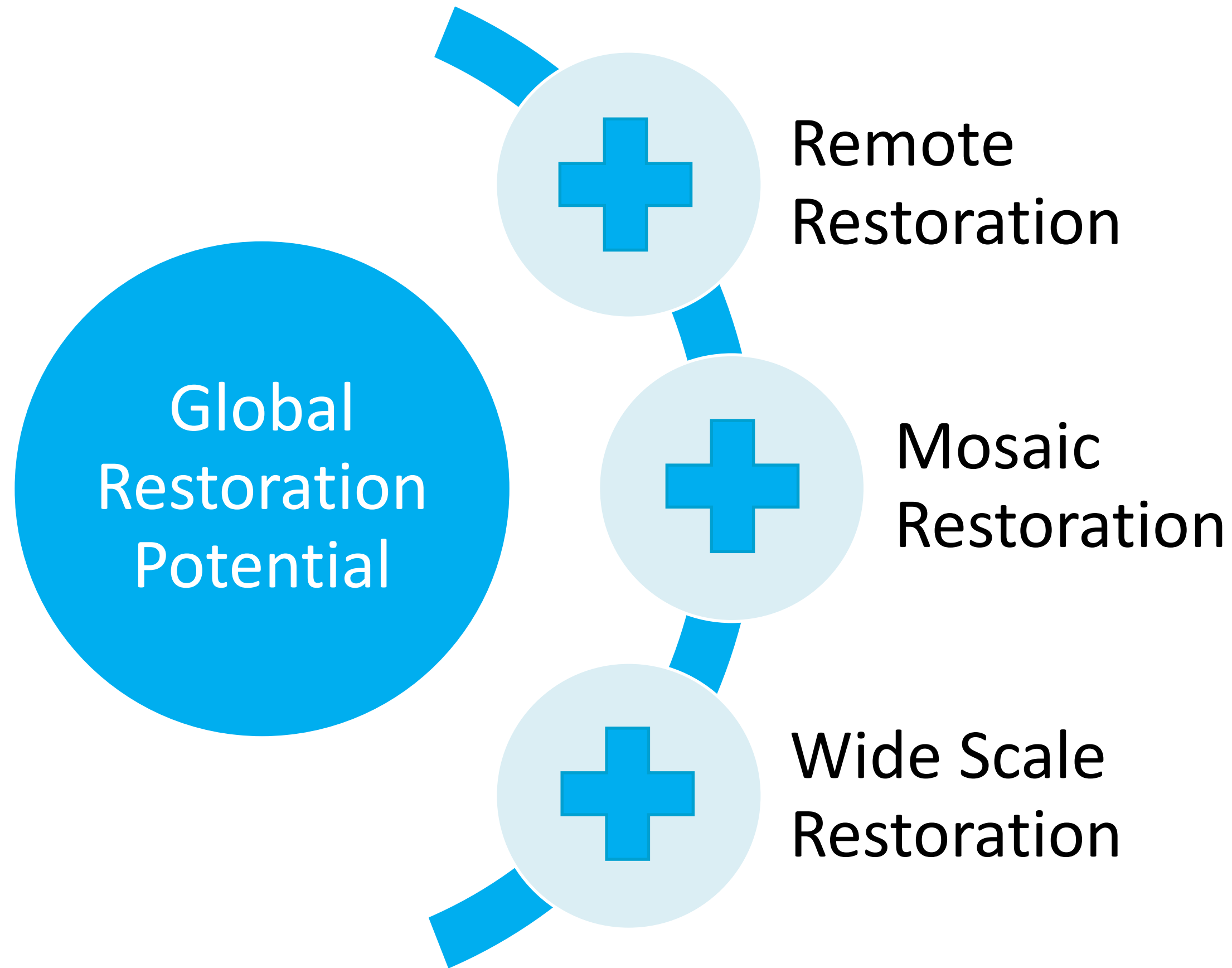
Data quality & funding



Sustainable Financing for Quality Data

- We will open access to new revenue streams (such as foundations and other funding bodies that require open data outputs)
- Seek large-scale project funding, such as for the Planet+ concept to make large revenue injections for development and enhancement of quality.
- Ensuring contribution from value added services to the underlying data

Restoration Potential Dataset



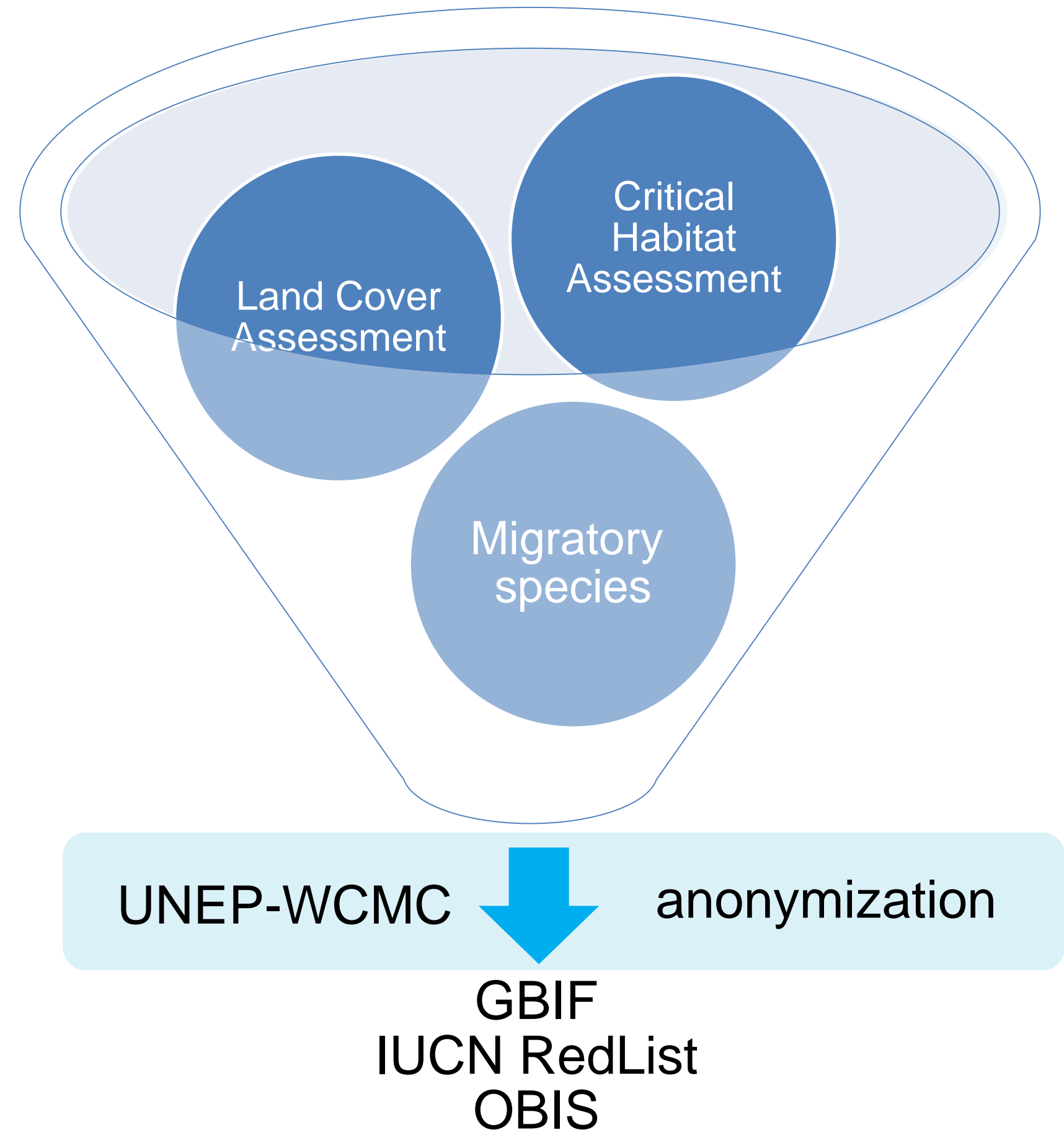
Background

- The United Nations General Assembly declared 2021–2030 the UN Decade on Ecosystem Restoration
- The UN Framework Convention on Climate Change has adopted a decision that sets a goal for all countries to slow, halt, and reverse forest cover and carbon loss.

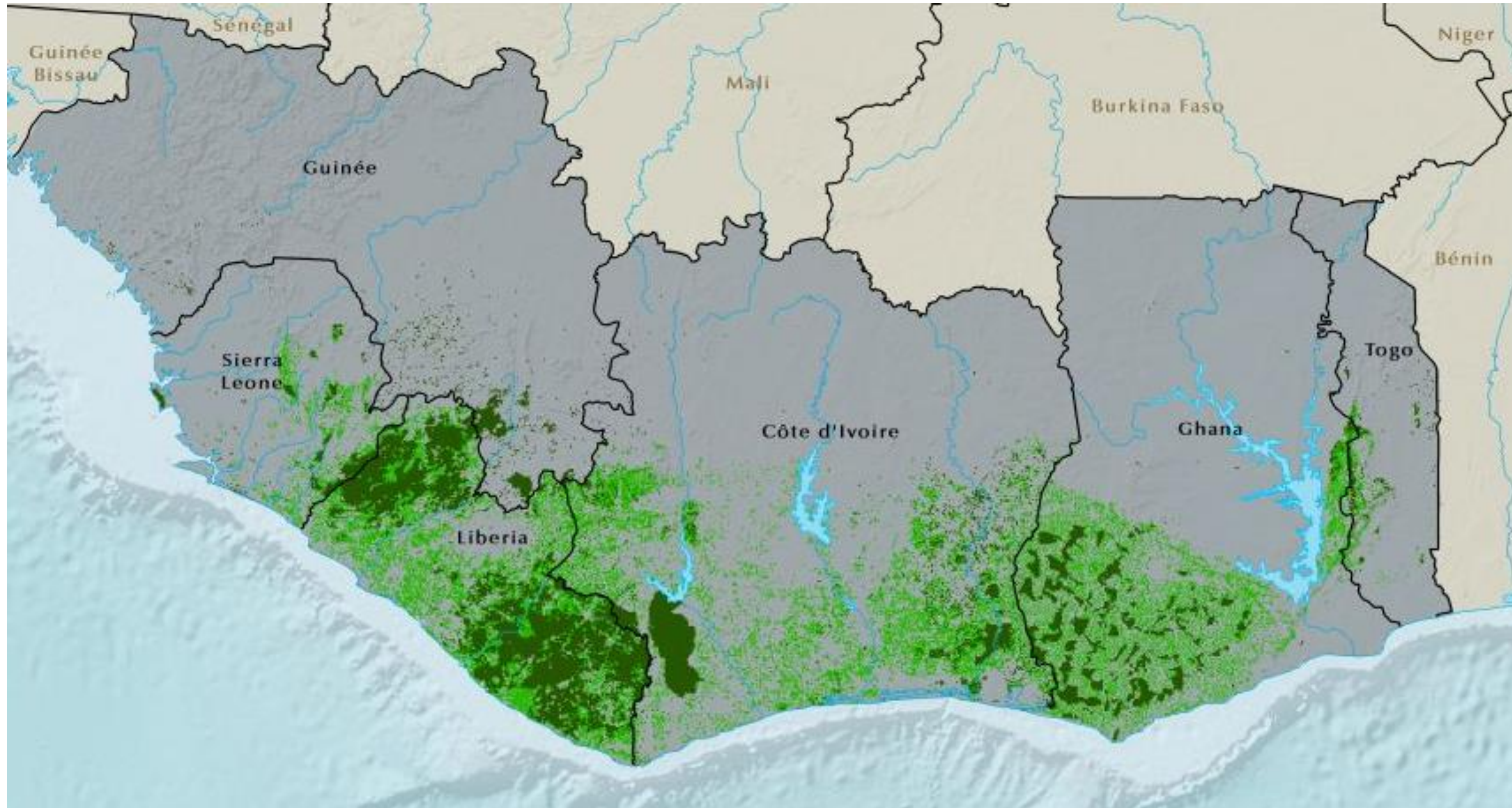
Biodiversity Data Repository

EIA data for the common good:

- EIA data could be fed through to UNEP-WCMC who would act as an EIA data repository.
- This data could be anonymized by UNEP-WCMC as an independent intermediary.
- It would enable UNEP-WCMC to then filter this information into global repositories such as CAFF and GBIF.



Priority regions



WHAT COULD PROTEUS LOOK LIKE?

PROTEUS

MINING

ENERGY

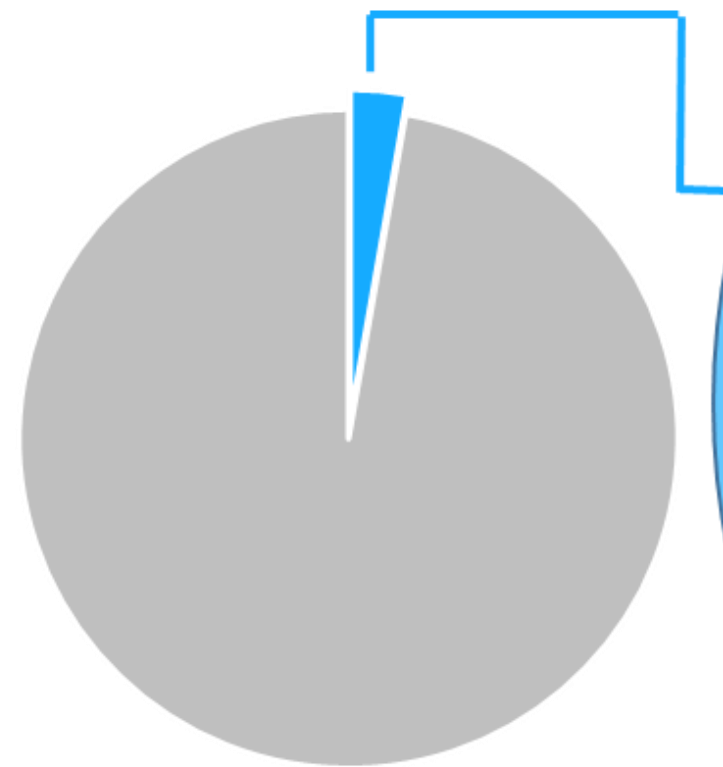
INFRASTRUCTURE

**METALS
MINERALS**

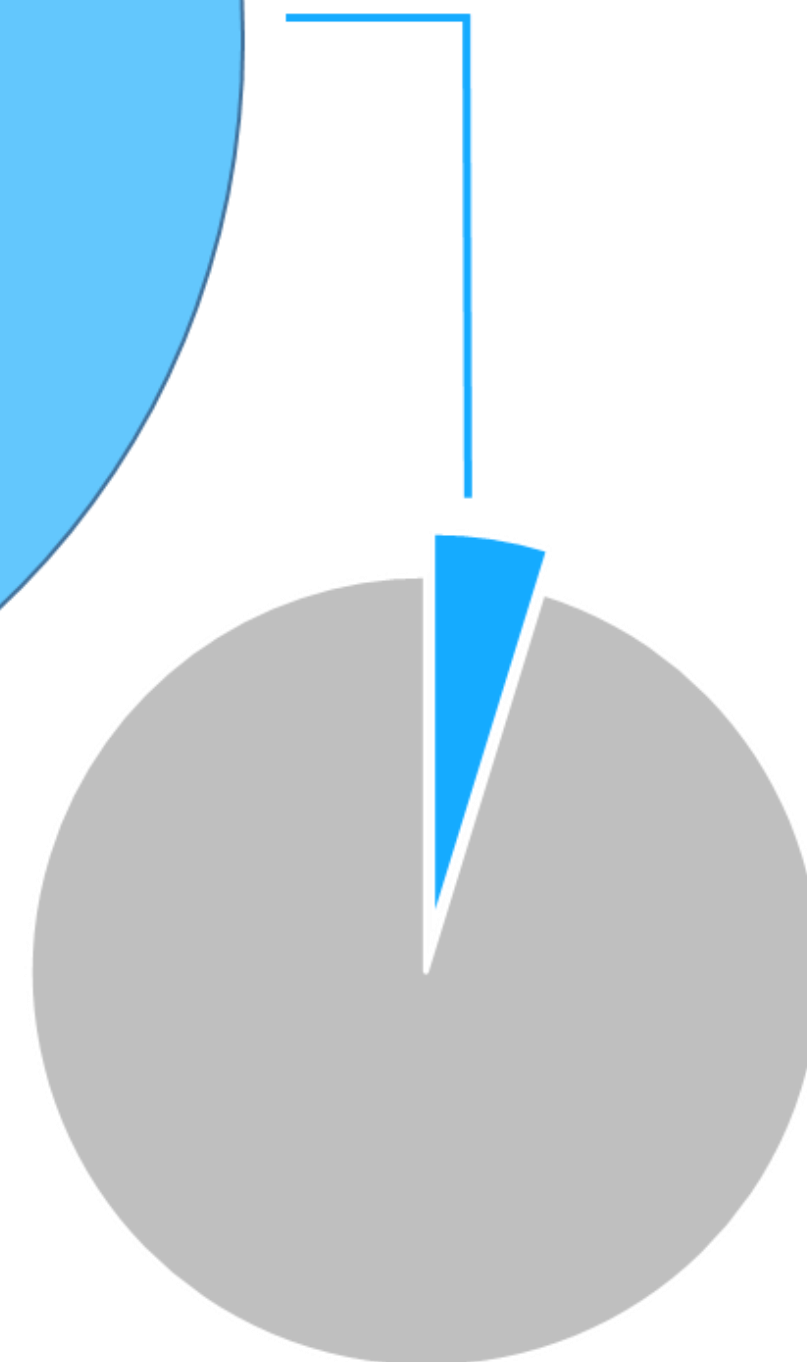
**OIL & GAS
RENEWABLES
ELECTRICITY UTILITIES**

**MINING
OIL & GAS
MEGAPROJECTS
RENEWABLES
ROADS
ELECTRICITY**

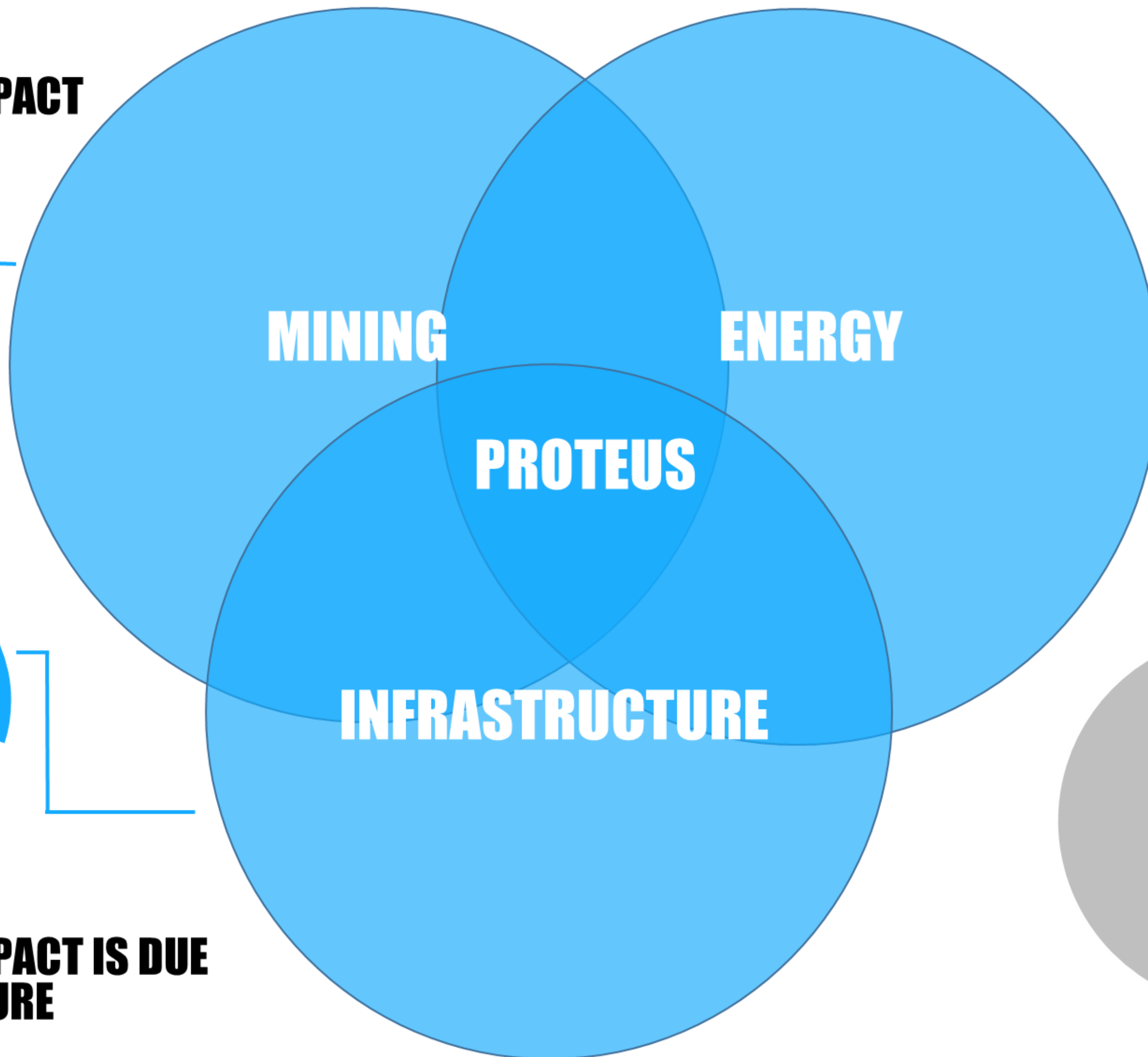
**2% OF GLOBAL
BIODIVERSITY IMPACT
IS DUE TO MINING**



**5% OF GLOBAL
BIODIVERSITY
IMPACT IS DUE
TO FOSSIL FUELS**



**~30% OF GLOBAL
BIODIVERSITY IMPACT IS DUE
TO INFRASTRUCTURE**



PROTEUS

MINING

MAJORS

US\$3B INVESTED IN EXPLORATION

JOINT VENTURES COMMON

JUNIORS

US\$4.8B INVESTED IN EXPLORATION



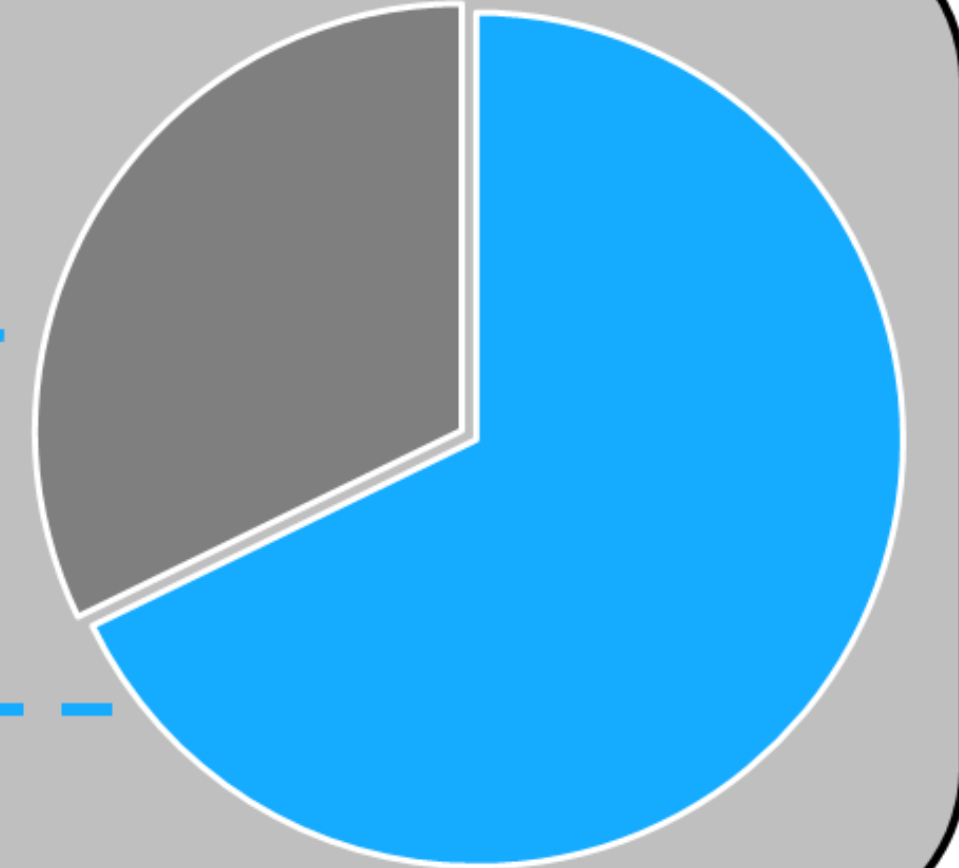
NON-JOINT VENTURES

US\$0.75T INVESTED

JOINT VENTURES

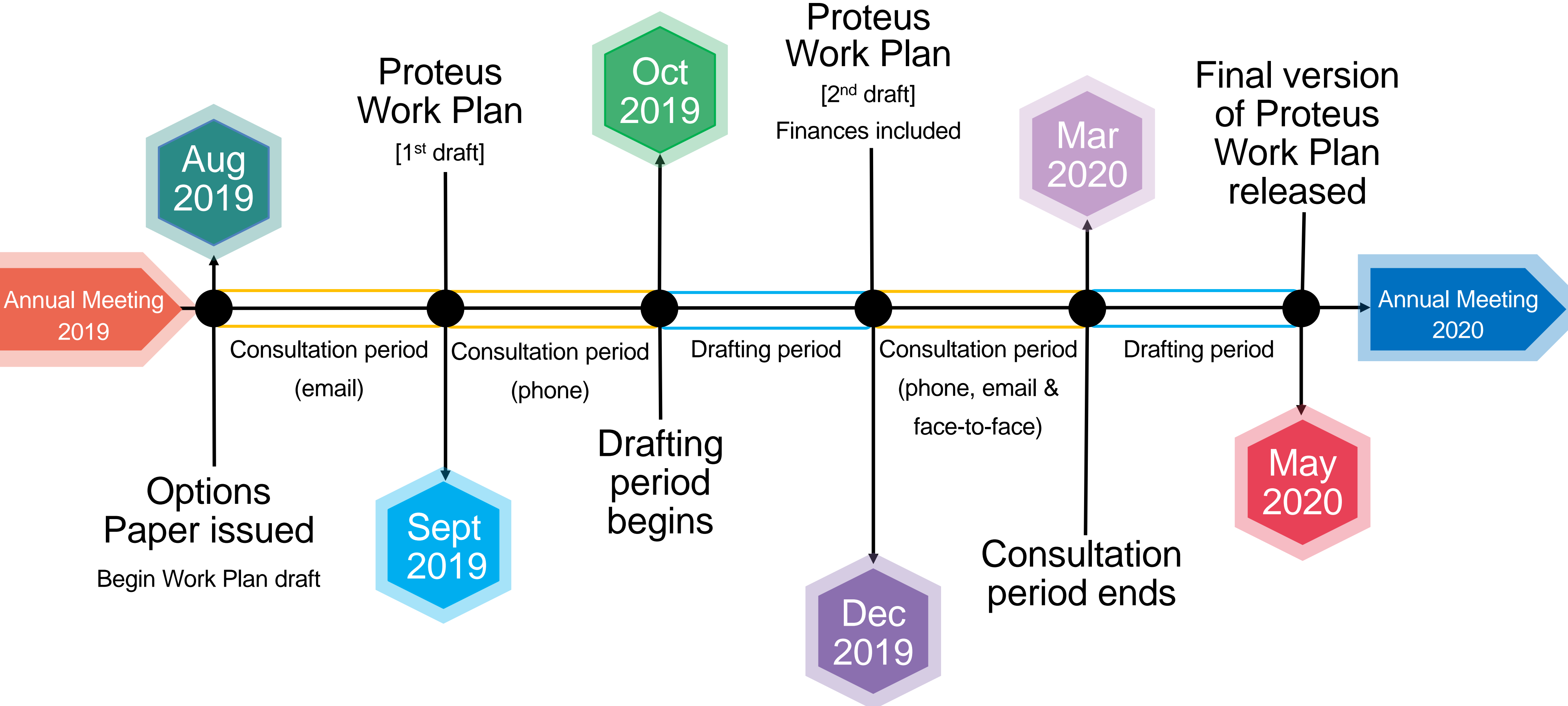
ENERGY

US\$1.58T INVESTED



PROTEUS RENEWAL PROCESS

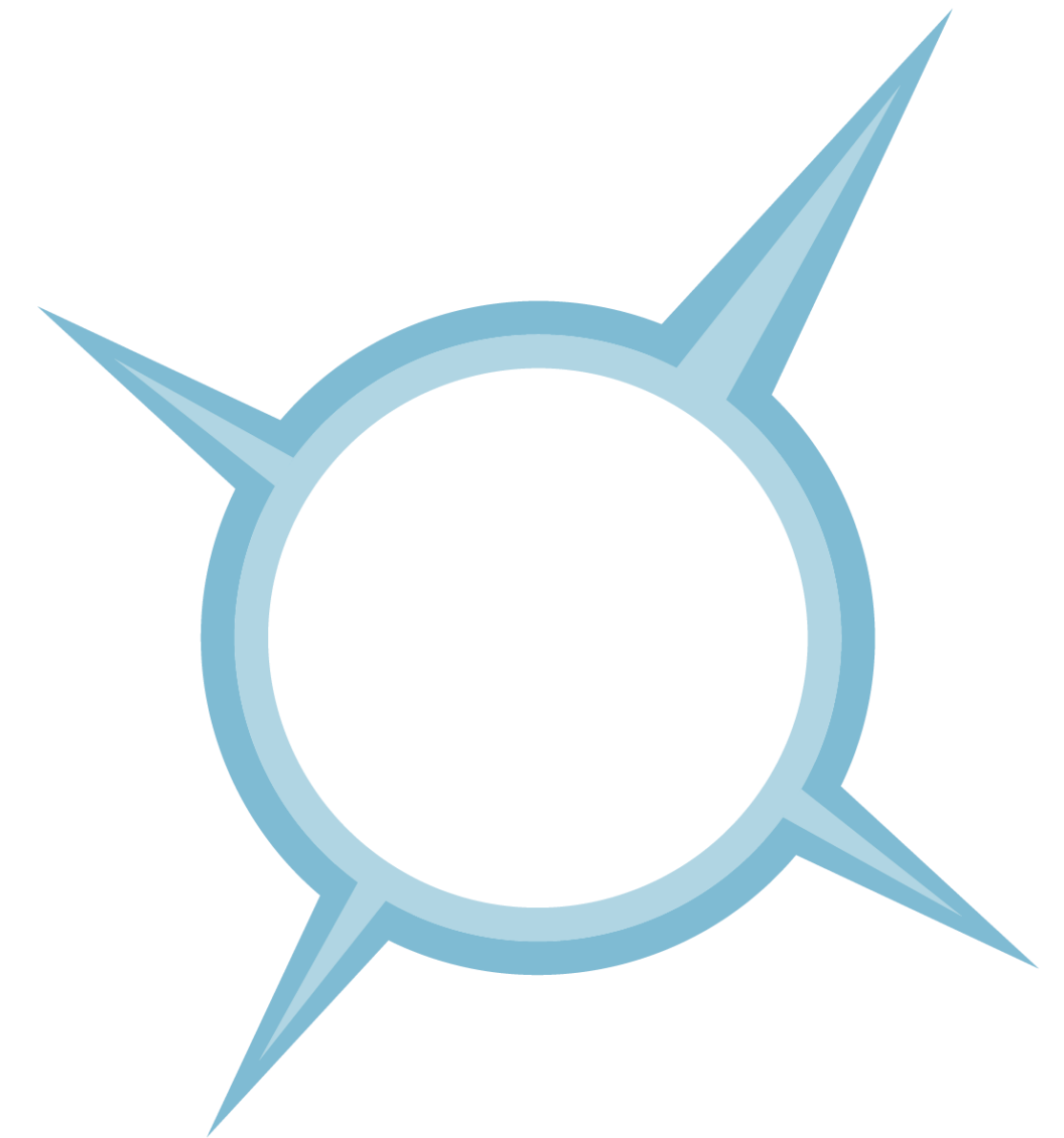
What to expect between now and the next annual meeting



QUESTIONS AND DISCUSSION

Neville Ash

The Business Case for Proteus in an Open Data World



REPORT BACK

Jonty Knox

BREAK

14:30 to 15:00

Menti Quiz

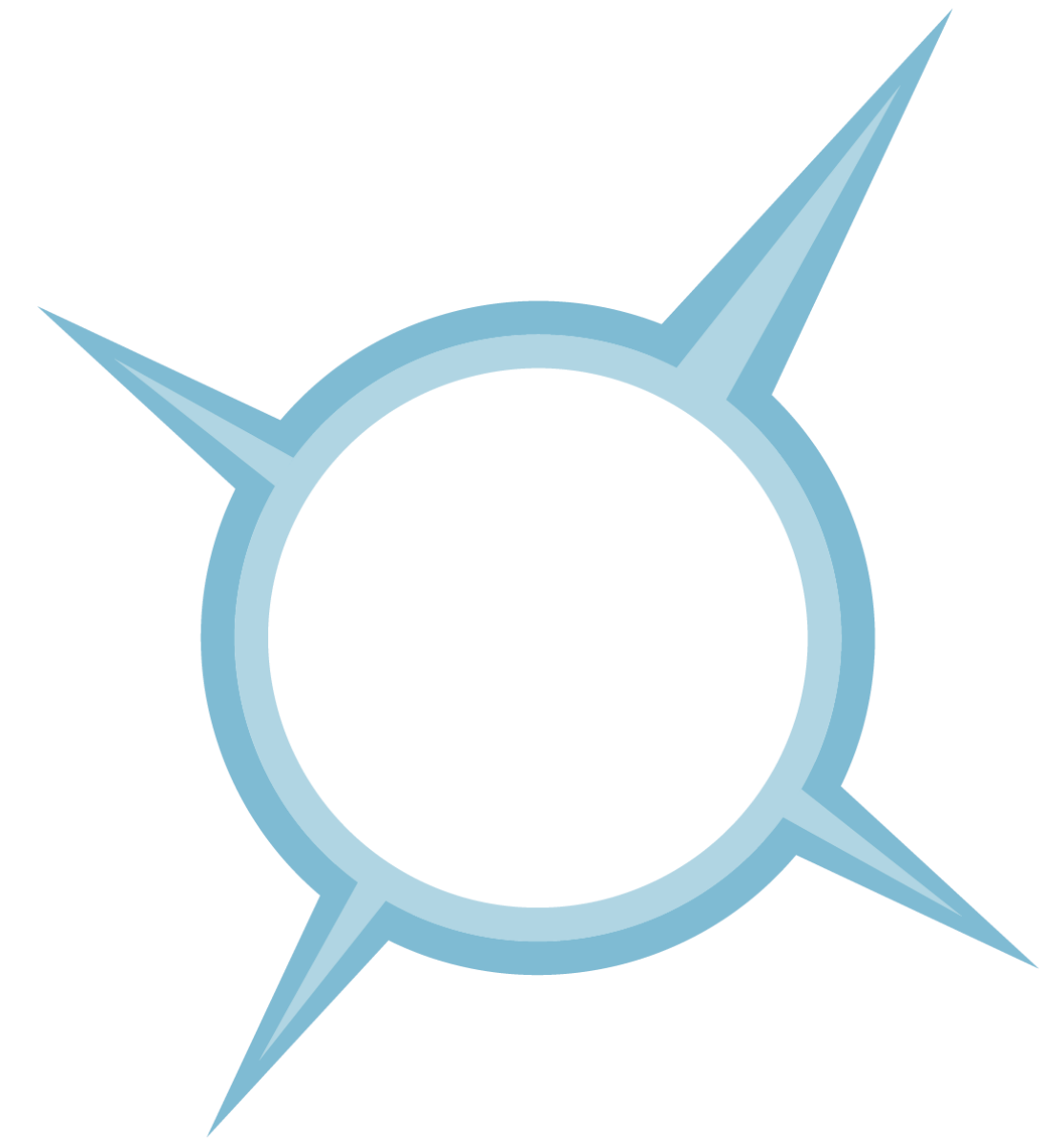
www.menti.com



INTRODUCTION

Jonty Knox

What Should Proteus Look Like Post-2020?



Menti

www.menti.com



DISCUSSION AND SUMMARY

Matt Jones

CLOSE

Neville Ash

THANK YOU!



Proteus Annual Meeting Drinks Reception

Friday 14th June 2019
17:30 to 19:30

Roof Terraces, David Attenborough Building,
Pembroke Street, Cambridge, CB2 3QZ

Please email katie.dawkins@unep-wcmc.org
by Friday 7th June if you can join us

proteus



WCMC
40 years

#WeCanMakeChange