

PROTEUS ANNUAL MEETING

13th – 14th June 2019, David Attenborough Building, Cambridge, UK



PROTEUS UPDATE

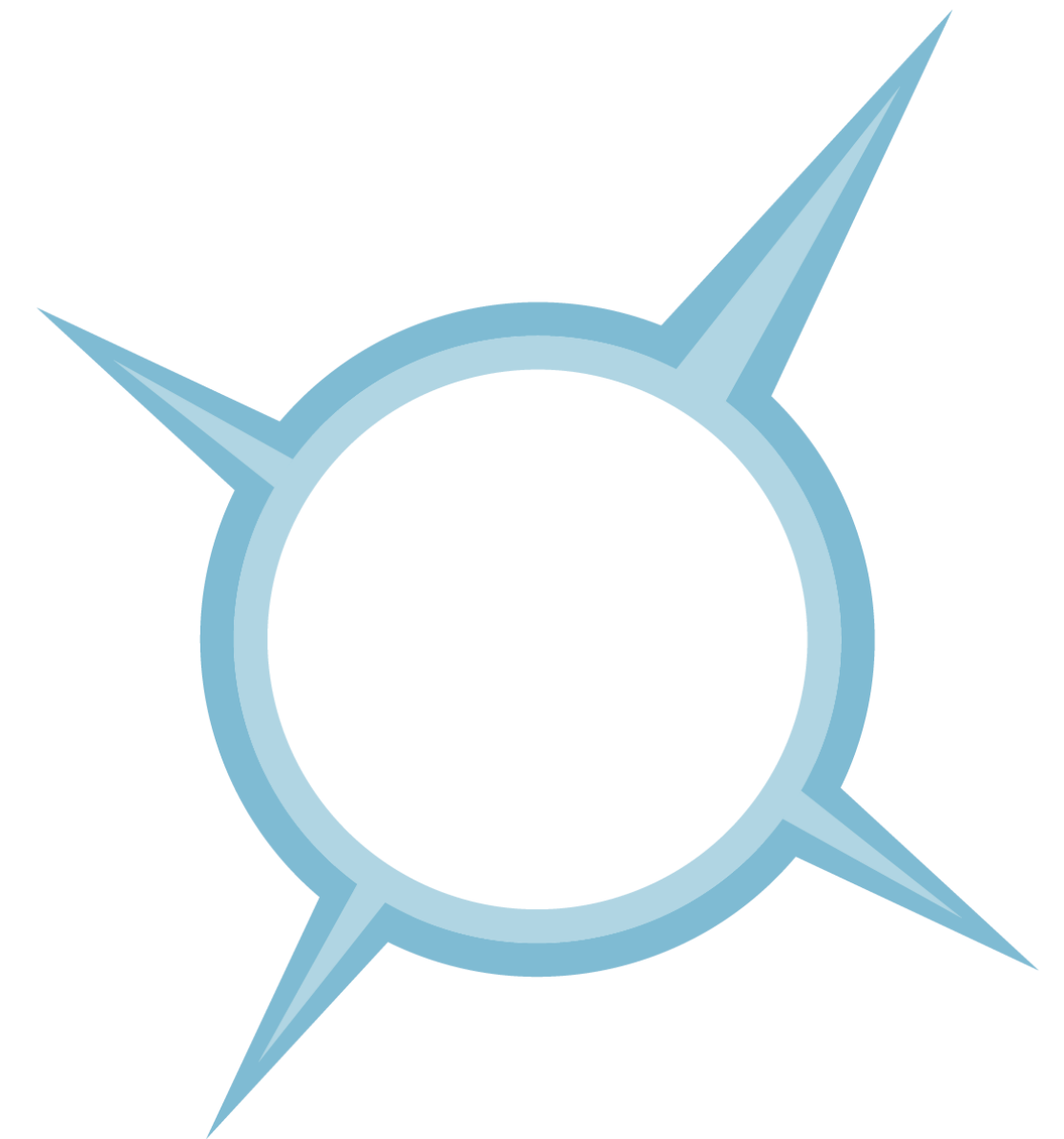
2018 Highlights, Impact Survey Results and Financial Report

Sebastian Bekker and Jonty Knox

2018 is the third year of the fourth phase of Proteus

In this presentation we will cover:

- 2018 Financial Report and 2019 Work Plan
- 2018 Highlights
Including Proteus Impact Survey results



2018 financial report and 2019 work plan



2018 Income and Expenditure: Overview

Total income **GBP 817,817**

- Plus in-kind contributions
- Plus leveraged funds

Total expenditure **GBP 801,526**



2018 Income and Expenditure: Activities

Income for 2018 work plan	Budget Income	Actual Income	
Proteus Partner Income	£796,953	£817,817	
Expenditure for 2018 work plan	Budget	Expenditure	Leverage
Data and Information	£543,953	£548,746	£503,417
<i>Improve the World Database on Protected Areas</i>		£210,279	
<i>Deliver the Integrated Biodiversity Assessment Tool</i>		£201,950	
<i>Improve and deliver marine and coastal data</i>		£121,369	
<i>Additional data and information</i>		£15,148	
Interpretation and Application	£108,000	£73,474	£131,189
Engagement and Capacity	£145,000	£179,306	£274,751
Contingency	£0	£0	
Total	£796,953	£801,526	£909,357
Balance		£16,291	

Leverage funds and in-kind contributions

Income for 2018 work plan

Proteus Partner Income

Budget Income

£796,953

Actual Income

£817,817

Expenditure

Data and In

Interpretati

Engagemer

**In-kind
Contributions**

£468,451



*World Database on Protected Areas
Integrated Biodiversity Assessment
river marine and coastal data
and information*

**Leverage ratio
of**

£1 : £1.1

**For total
partner
contributions**

Budget

£543,953

£108,000

£145,000

£0

£796,953

Leverage

**Leverage ratio
of**

£1 : £24

**For individual
partner
contributions**

£503,417

£131,189

£274,751

Total

£801,520

£909,357

Balance

£16,291

2019 Work Plan and Budget

Expected Partner Income for 2019 work plan	Income
<i>Proteus Partner Income</i>	£893,773
<i>Carry forward from 2018</i>	£16,291
Total expected income	£910,064

Budget for 2019 work plan	Budget
Data and Information	£515,161
<i>Improve the World Database on Protected Areas</i>	£166,350
<i>Deliver the Integrated Biodiversity Assessment Tool</i>	£188,811
<i>Improve and deliver marine and coastal data</i>	£160,000
Interpretation and Application	£130,219
Engagement and Capacity	£153,393
Contingency	£111,291
Total	£910,064

2019 activities...



Planned activities in 2019

Data and information

- Data improvements (WDPA, marine and coastal data)
- Delivering IBAT
- Capacity development for WDPA

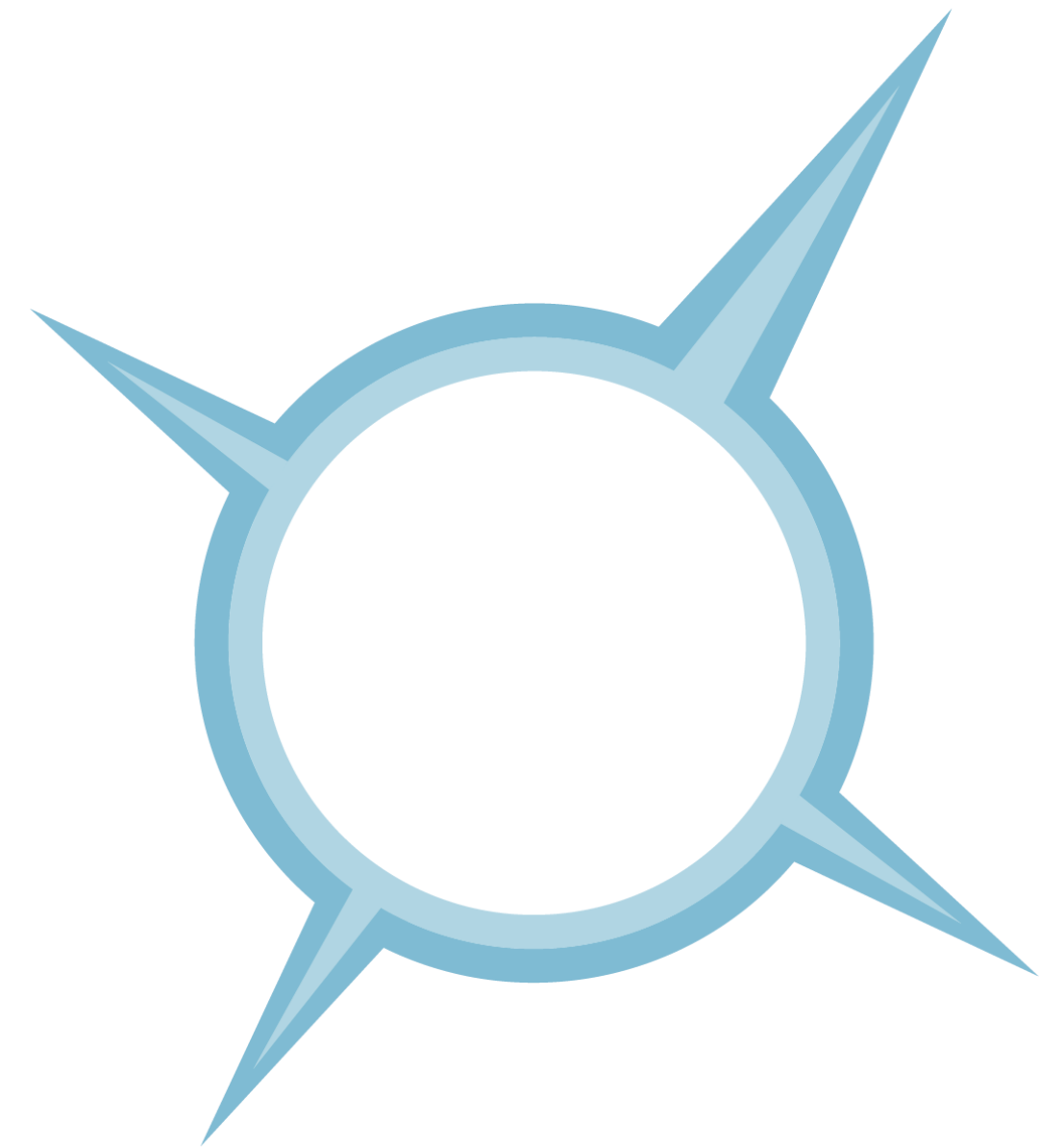
Interpretation and Application

- Indicator pilots
- Webinars (e.g. Key Biodiversity Areas)
- Briefing notes (e.g. threat mapping, IFC GN6)

Engagement and Capacity

- Post-2020 engagement
- Developing new Proteus training materials
- Technical Community of Practice (e.g. WDPA data update process)

Questions?



2018 Highlights



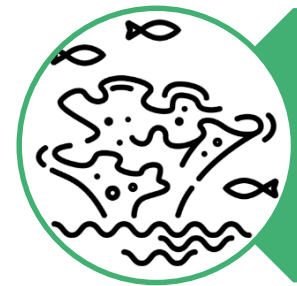
Highlights of activities in 2018



Improved protected areas data



Biodiversity indicators



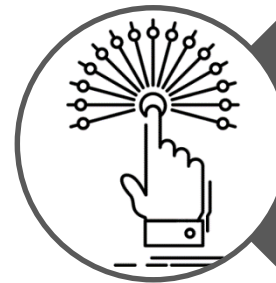
Marine and coastal data



New briefing notes and resources



Launch of IBAT 3.0



The Proteus Partnership's impact



Advancing Environmental Risk Management

Highlight 1: Improved protected areas data

100 countries and territories updated

64% updated or validated

Net increase in 3,895 records

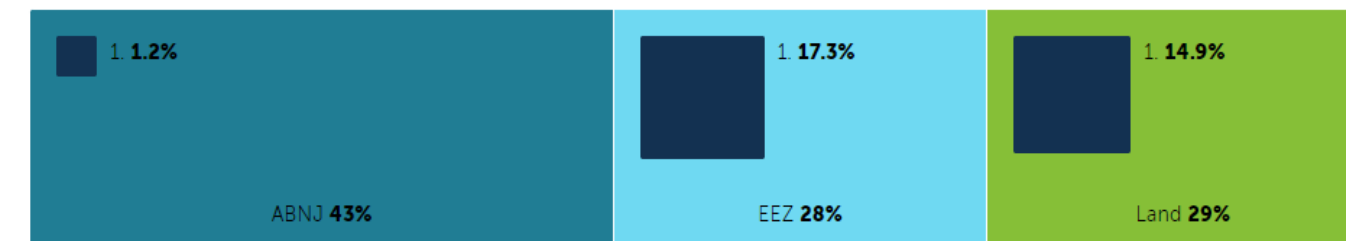
Protected Planet Report 2018

Proportional coverage of protected areas in the land and ocean.



■ Proportion of cover by protected areas

Proportional coverage of protected areas in the land and ocean (including in EEZ versus ABNJ).



■ Proportion of cover by protected areas

EEZ: Exclusive Economic Zone; ABNJ: Areas Beyond National Jurisdiction. Source UNEP-WCMC and IUCN. 2019. Protected Planet: The World Database on Protected Areas (WDPA), April 2019 version. Cambridge, UK: UNEP-WCMC and IUCN.

Protected Planet Report 2018

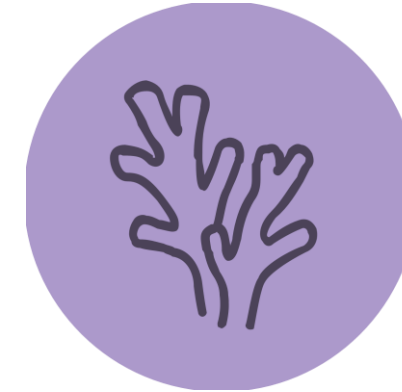
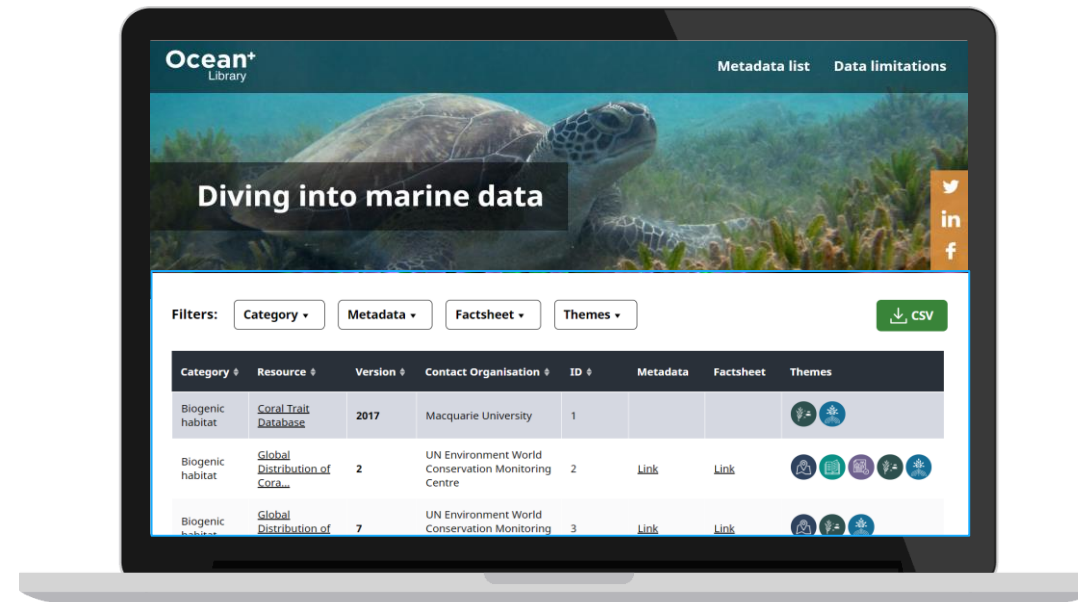
Tracking progress towards global targets for protected areas



Live report available at:
<https://livereport.protectedplanet.net/>

Highlight 2: Marine and coastal data

Ocean⁺ Library



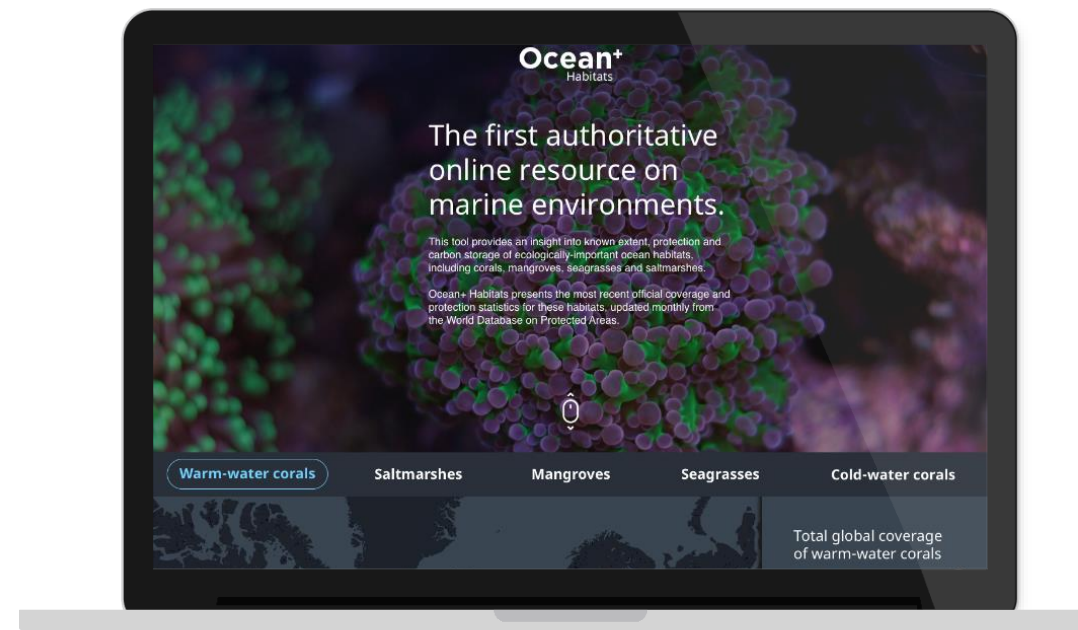
943 new records in the *Global Distribution of Coral Reefs*

Two new state-of-the-art datasets on mangroves and tidal flats available to Proteus Partners



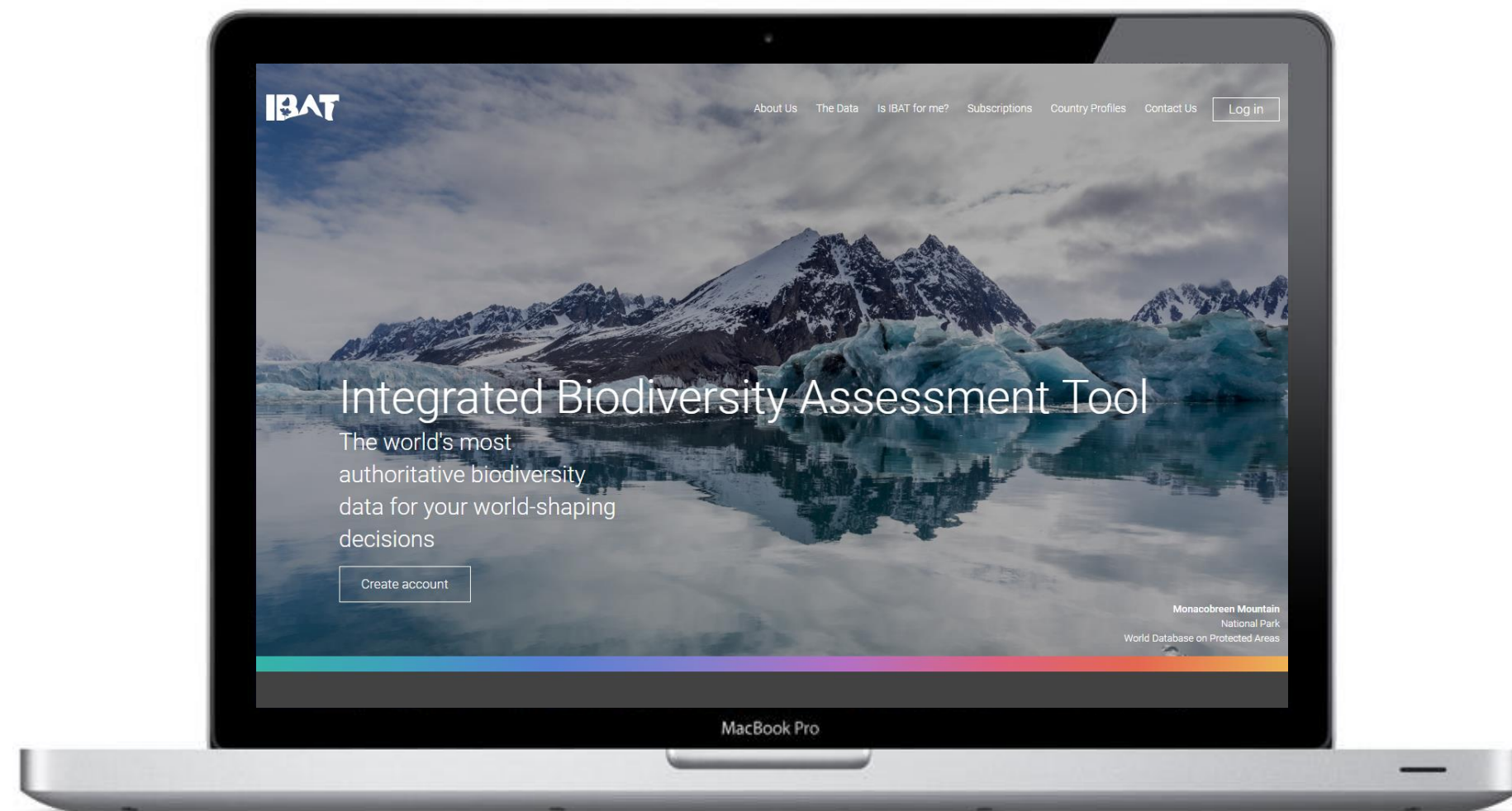
>30 new metadata sheets describing available data online (wcmc.io/MarineDataManual).

Ocean⁺ Habitats



Highlight 3: Launch of IBAT 3.0

**IBAT 3.0 launched
in October 2018**



Recent updates to core datasets



Protected Areas **231,566 records** **January 2019**



Key Biodiversity Areas **15,714 records** **June 2018**



Red List Species **>65,000 species layers** **December 2018
Version 2018-2**

How we got here

Industry and Biodiversity Analysis Tool

Map Tool Resources Glossary Home Logout

Tools

Zoom to Country

Select a country →

Jump to Country Details

Select a country →

Layers

Regional-level Priorities for Conservation

KBAs/IBAs/AZEs

Protected Areas

Enter Coordinates

Latitude

degree minute second dec. deg.

Longitude

degree minute second dec. deg.

Industry and Biodiversity Analysis Tool

Map Tool Resources Glossary Home Logout

Area of interest: Philippines

With more than 20,000 endemic species, the Philippines is one of 17 "megadiversity" countries, which collectively claim two-thirds of the earth's biological diversity.

Species overview: 491 species recorded as globally threatened on the 2004 IUCN Red List of Threatened Species. [MORE...](#)

KBA overview: 128 KBAs identified for 209 globally threatened species and 419 endemic species of mammals, birds reptiles, amphibians and freshwater fishes. The KBAs cover a total of 6,008,813 ha (approx 20% of total land area). [MORE...](#)

Protection overview: currently, 45 of the in the Philippines, having been formally es framework of the National Integrated Prote remaining 83 KBAs lack formal governmen

Threat overview: the primary threats to f loss caused by destructive resource use, c pressure. Specific threats include mining, l agricultural and urban development. [MOR](#)

Click for interactive map

Industry and Biodiversity Analysis Tool

Map Tool Resources Glossary Home Logout

Site name: Quirino Protected Landscape (13)

Justification: Curabitur porttitor nulla id ligula. Vestibulum mattis adipiscing lorem. Maecenas in nunc. Pellentesque habitant morbi tristique senectus et netus et malesuada fames ac turpis egestas. Praesent euismod, neque vitae scelerisque mollis, nisi magna tincidunt ante, vitae iaculis eros diam in turpis. Nullam pharetra eros. Vivamus faucibus diam quis tellus porttitor.

Criteria: Vulnerability, Irreplaceability

Area: 164,364 ha

Threats: Logging

Last Assessment Date: 30 November 2006

[DETAILS](#) [SPECIES](#) [TRENDS](#) [RESOURCES](#)

Species Detail

Class	Species	IUCN Threat Category
AMPHIBIA	<i>Ptychocheilus pumilus</i>	VU
	<i>Ptychocheilus sierramensis</i>	VU
	<i>Rana bozani</i>	VU
	<i>Rhacochorus bimaculatus</i>	VU
	<i>Coryz melanurus</i>	VU

Home Map Country IBAT & Your Business Data Behind IBAT Reports Downloads

Add Load Save Clear Show buffers Buffers distances: 1 km, 5 km and 50 km Print preview

Home Map Country/Territory IBAT and Your Business Data Behind IBAT Downloads

Latitude Longitude Go Show buffer (1km, 5km, 10km) Print preview

Base Layers Google Standard Map

ibat FOR BUSINESS
Integrated Biodiversity Assessment Tool

Home Map Country/Territory **ibat** FOR BUSINESS Integrated Biodiversity Assessment Tool

Denmark designates new Ramsar sites

Denmark has designated its 39th its 12th in the territory of Greenland. The new sites are the three wide valleys with extensive and extensive marshes, in an otherwise alpine area on the eastern coast of Greenland, some 110km north of the town of Sisimiut (60° 45'). Read the [full article](#). Source: [Ramsar Convention](#)

Posted by Martin Sneyers on 2012-02-22 22:32:27

Tunisia names 15 new Ramsar sites

Tunisia's Direction générale des Sites et Patrimoine Culturels is implementing authority in that new Wetlands of International Importance. The new sites include four permanent or intermittent saline lakes, two

Logged in as: **unep-wcmc**
Subscription expires: 2012-09-26

Home Map Country/Territory IBAT and Your Business Data Behind IBAT Downloads

Country/territory download

Below is an alphabetical list of countries/territories. Simply click on the download icon in either the "shp" or "kml" column to download the required file. If you hover the mouse over the icon, the tool-tip will indicate the file size.

If you require global sets of any of the data layers, please contact the IBAT Programme Manager.

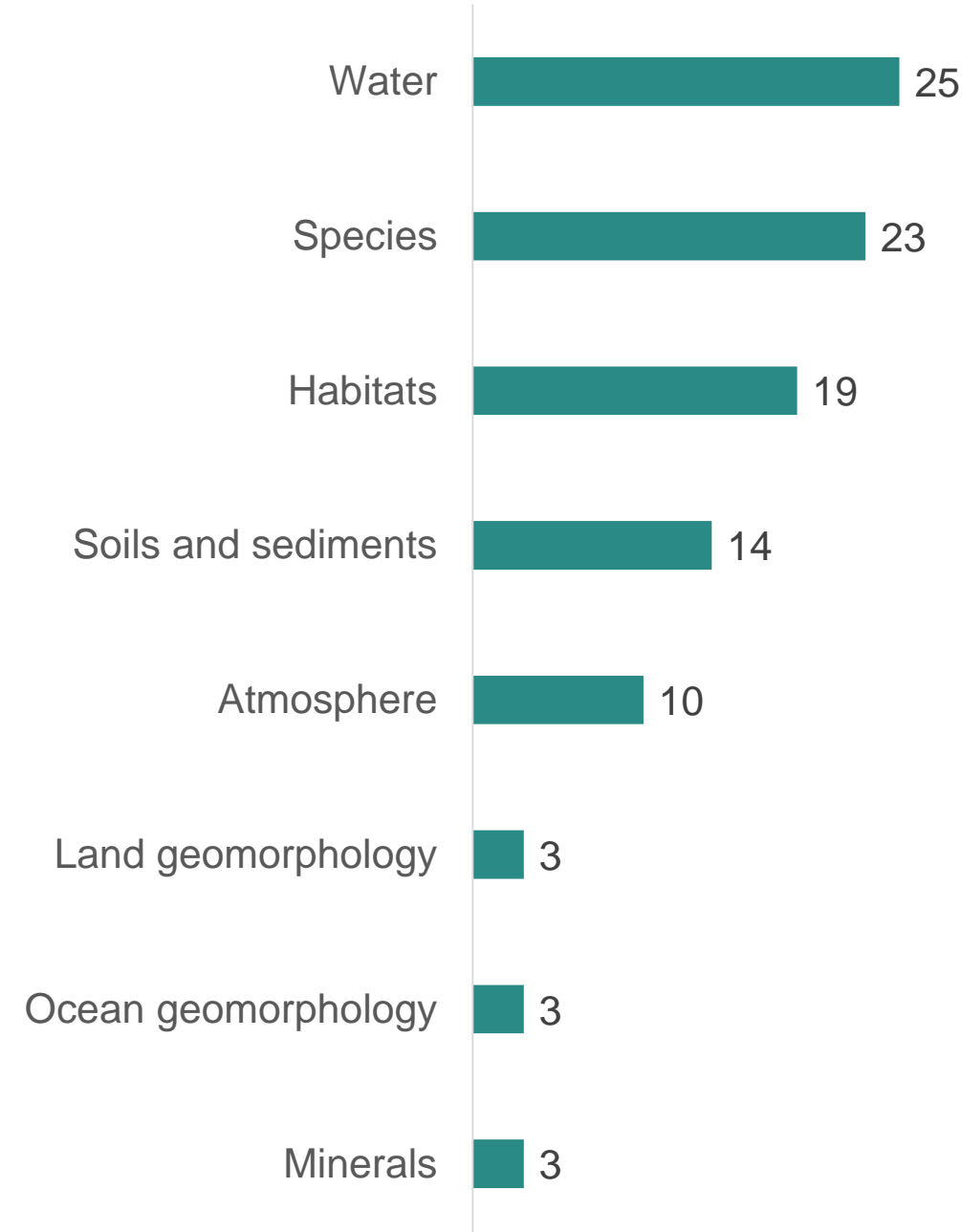
Country	shp	kml	Country	shp	kml	Country	shp	kml
Afghanistan			Germany			Oman		
Aland Islands			Ghana			Pakistan		
Albania			Gibraltar			Palau		
Algeria			Greece			Palestinian Territory, Occupied		
American Samoa			Greenland			Panama		
Andorra			Grenada			Papua New Guinea		
Angola			Guadeloupe			Paraguay		
Anguilla			Guam			Peru		

Highlight 4: Advancing Environmental Risk Management

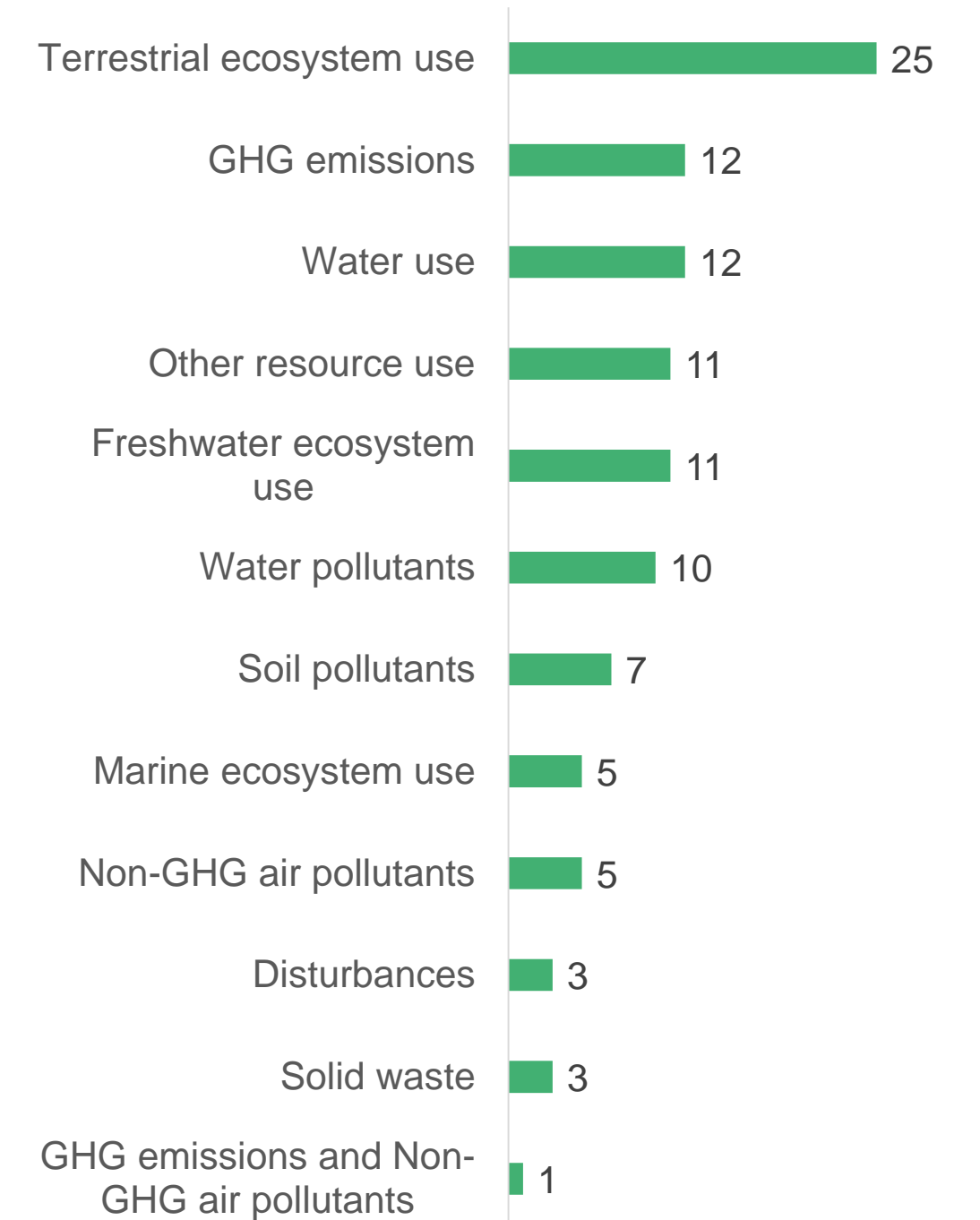
Launch of ENCORE (Exploring Natural Capital Opportunities, Risks and Exposure)

- Supports management of risks arising from loss of natural capital
- Allows companies to understand their dependence on natural capital using spatial and non-spatial data

Data sources for each natural capital asset



Data sources for each impact driver



Highlight 5: Biodiversity indicators

UNEP-WCMC is collaborating with Conservation International, Fauna & Flora International, supported by IPIECA and Proteus

- Based on the needs identified in Phase 1 of the project, a draft methodology for site-level indicators has been developed
- It will be piloted throughout 2019 by seven extractives companies
- By end 2019, a refined methodology will be published for broader industry uptake

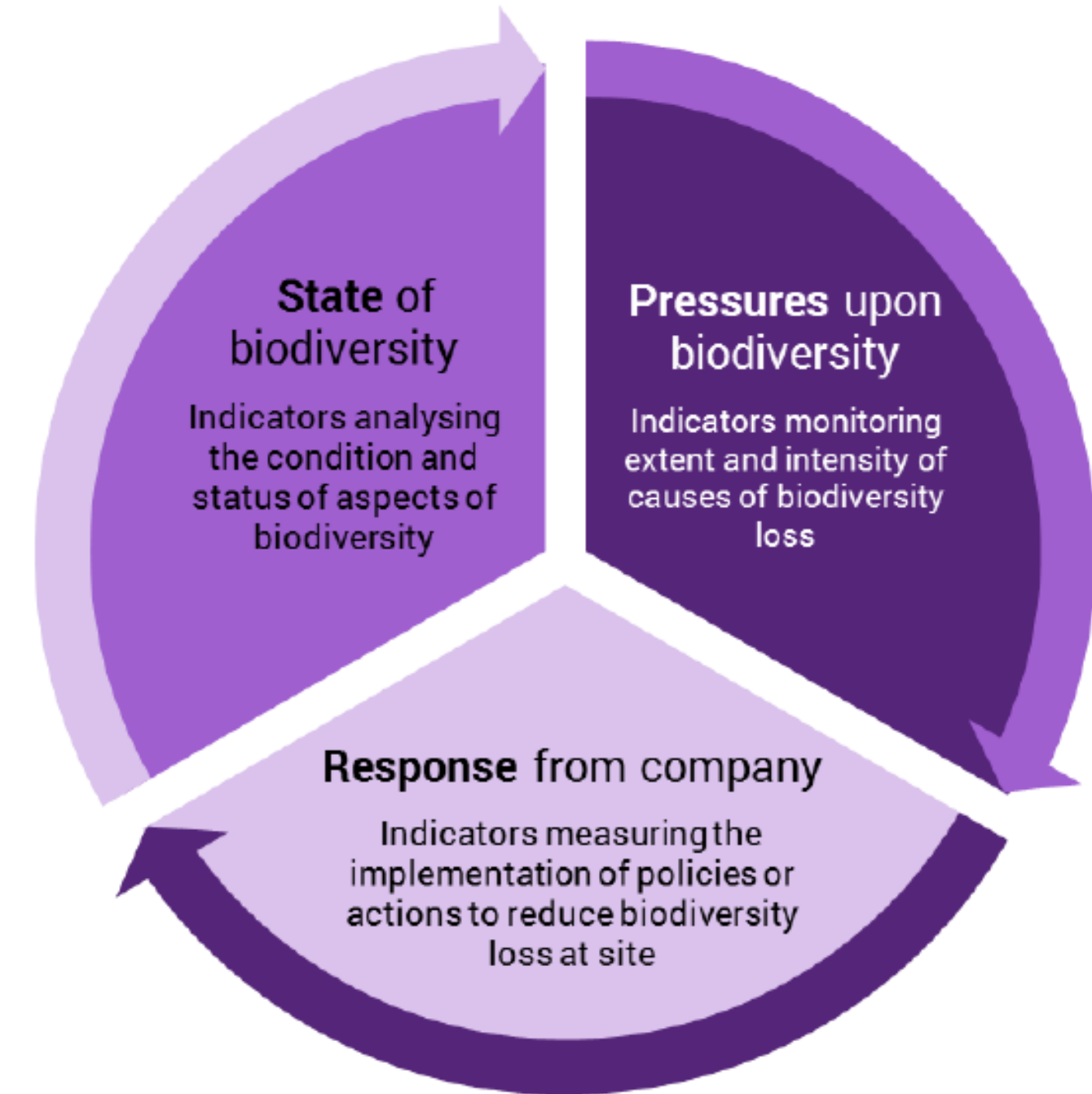


Figure: State-Pressure-Response framework used in Stage 2 of the methodology

Highlight 6: New briefing notes and biodiversity resources

Technical Community of Practice



- | | |
|-----------------|--|
| Mar 2018 | The Integrated Biodiversity Assessment Tool (IBAT) redevelopment |
| Jun 2018 | Web services and Application Programming Interface |
| Oct 2018 | Launch of Ocean+ |
| Nov 2018 | Launch of IBAT 3.0 |

Technical briefing notes



- Green and blue carbon
- UN Biodiversity Conference: Implications for Extractives
- Marine migratory species

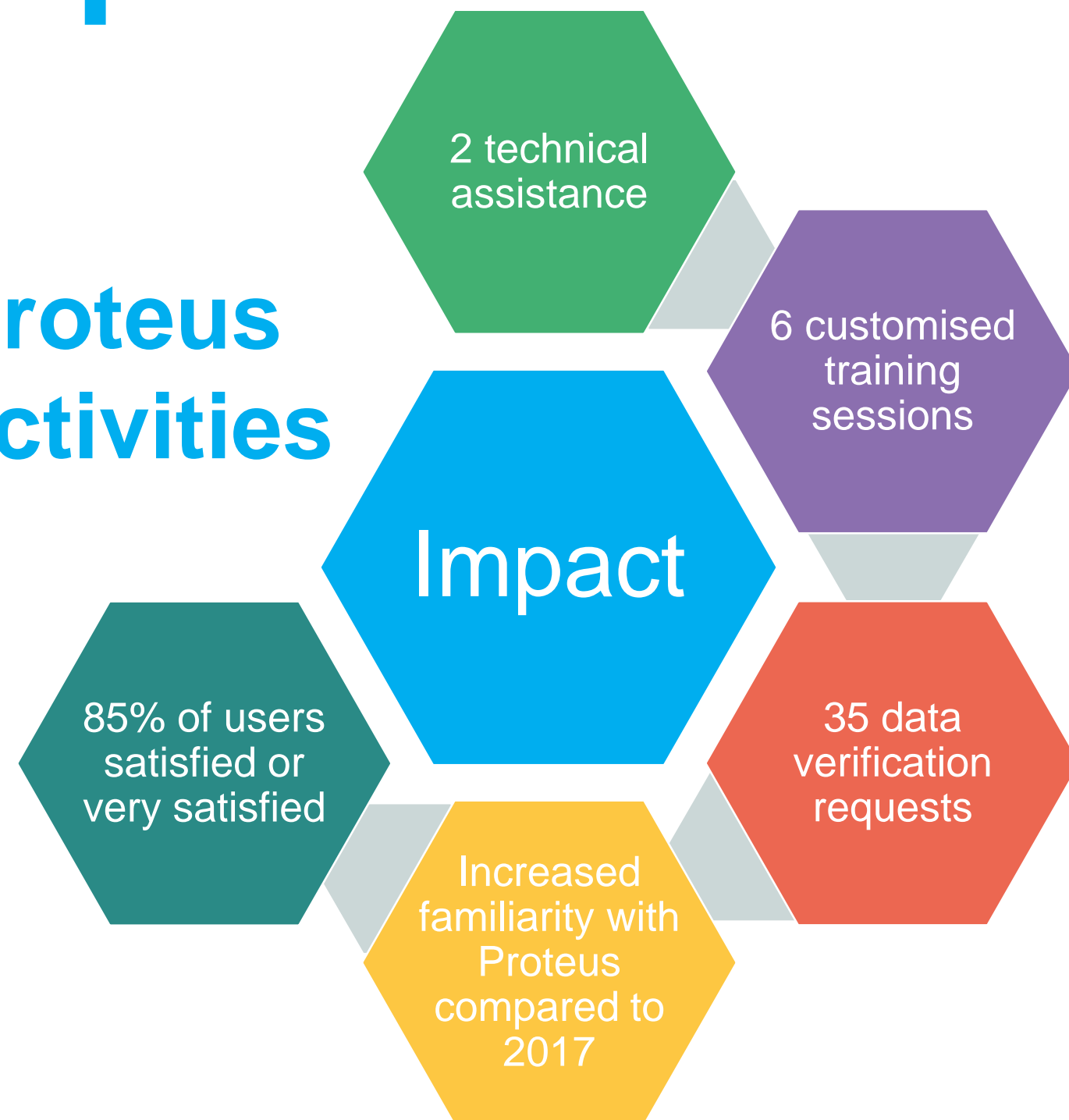
Global Biodiversity Agenda



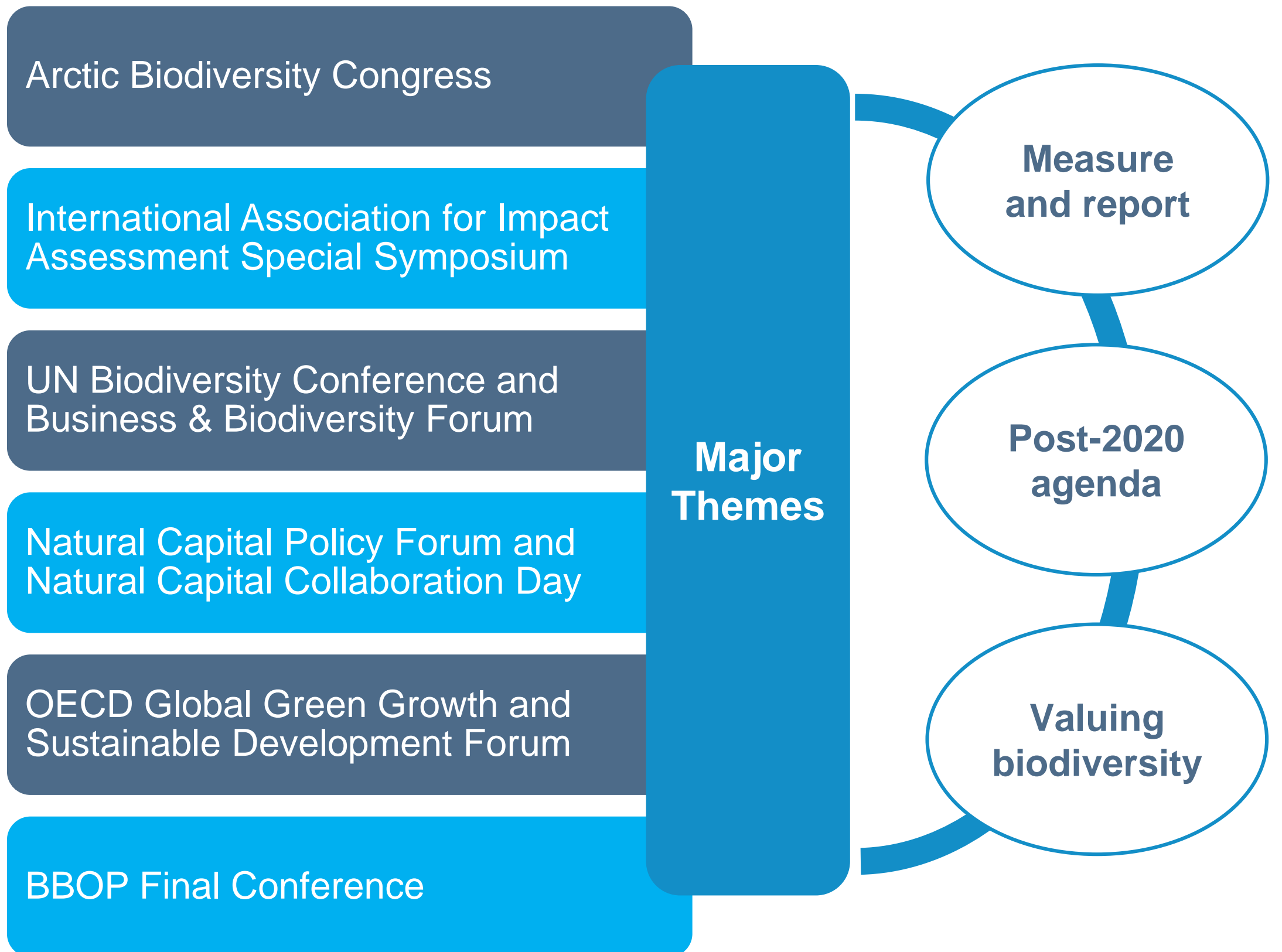
- | | |
|-----------------|--|
| Apr 2018 | Global review of EIA/SEA legislation |
| Nov 2018 | Climate change and biodiversity: Beyond direct impacts |
| Dec 2018 | Convention on Biological Diversity |

Highlight 7: The Proteus Partnership's impact

Proteus activities



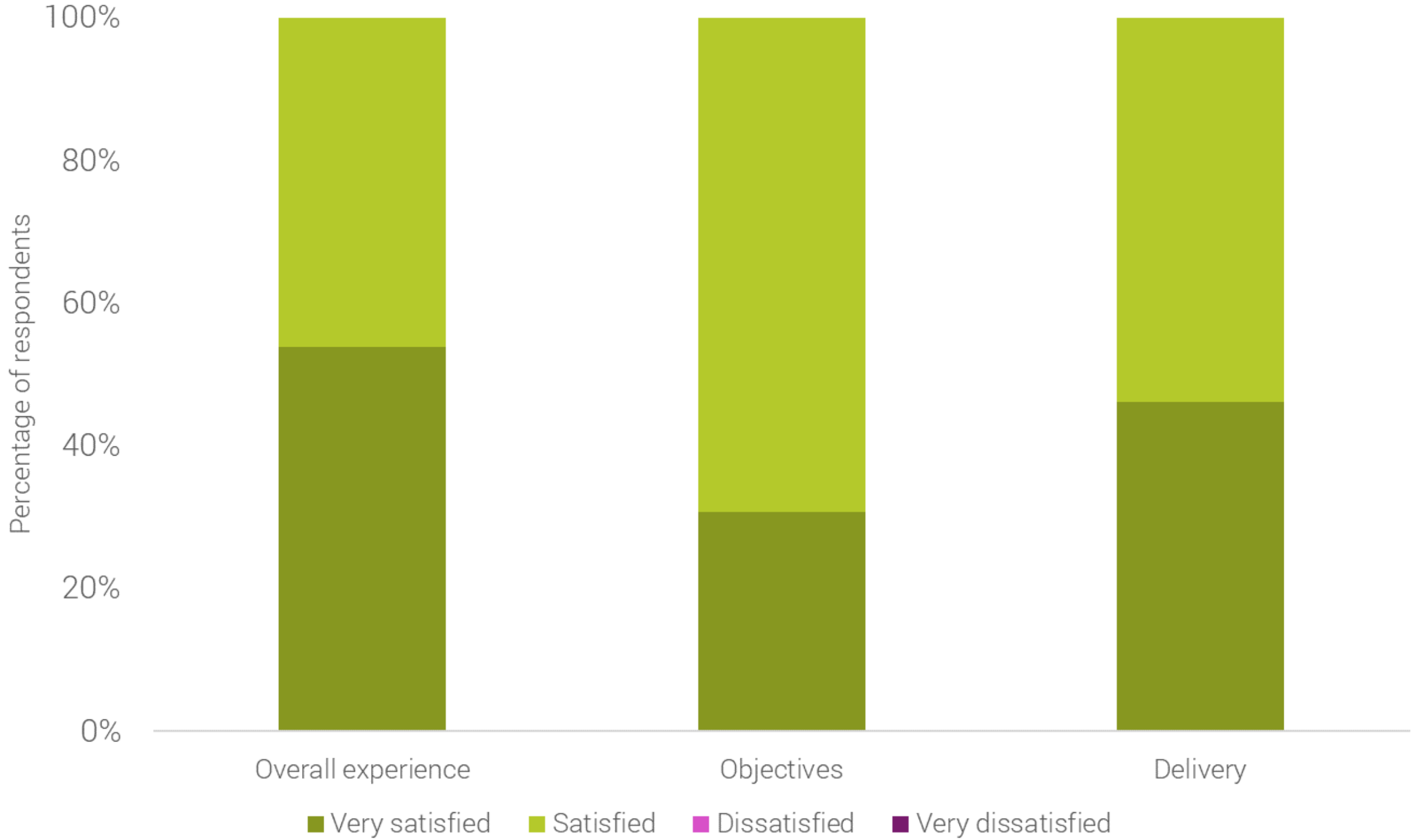
Engagement in business and biodiversity



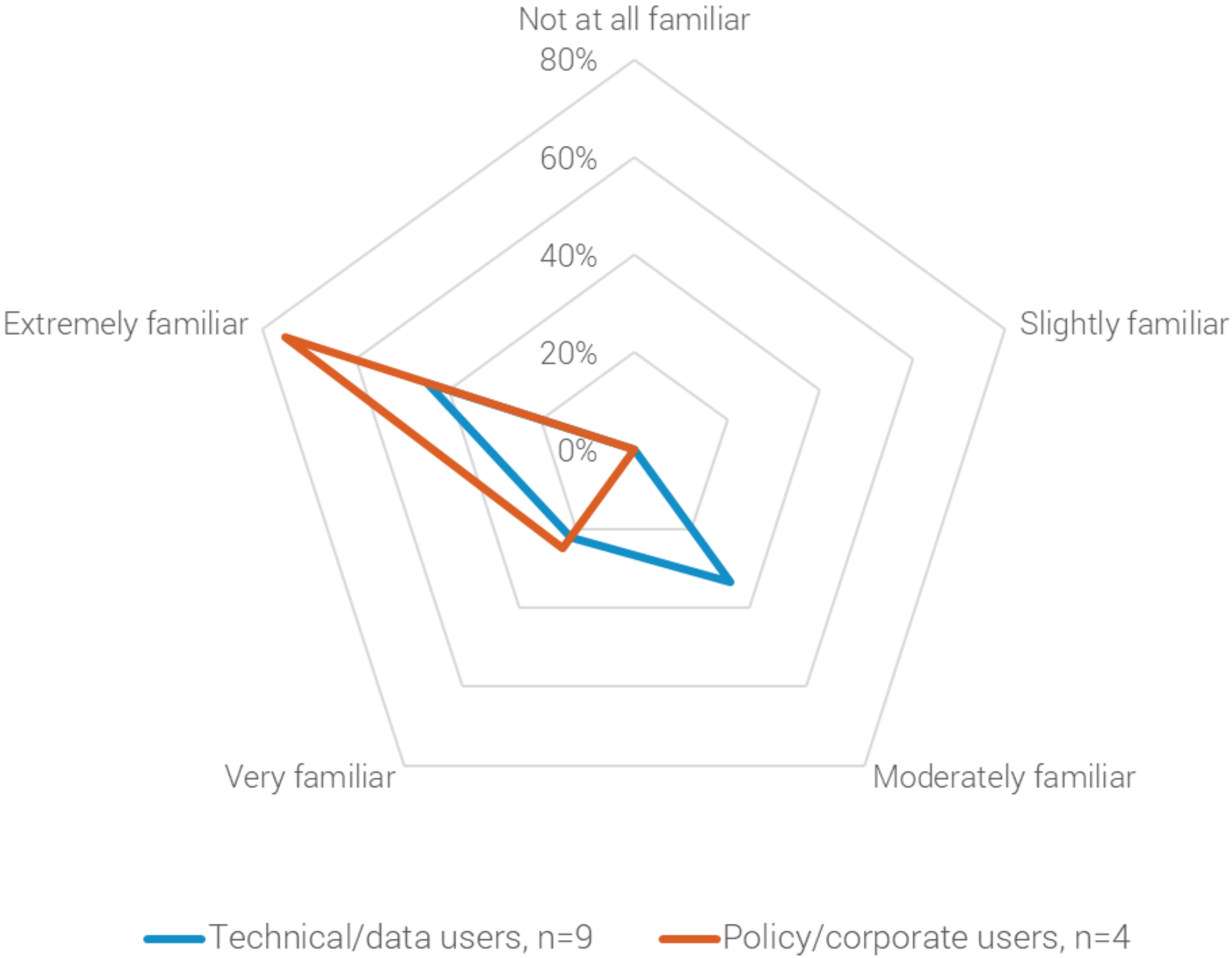
Impact survey results



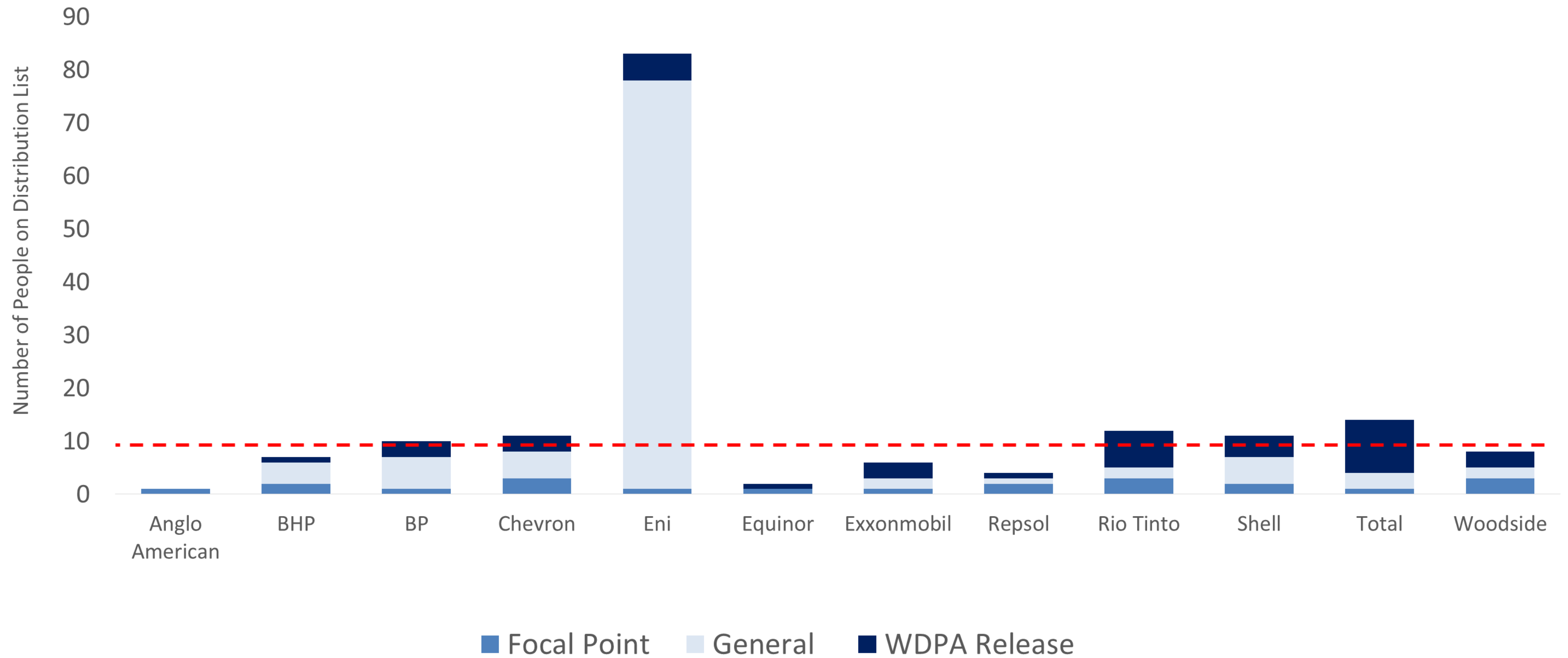
Satisfaction with the Proteus Partnership



Familiarity with the Proteus Partnership



Reach and Communication



Menti

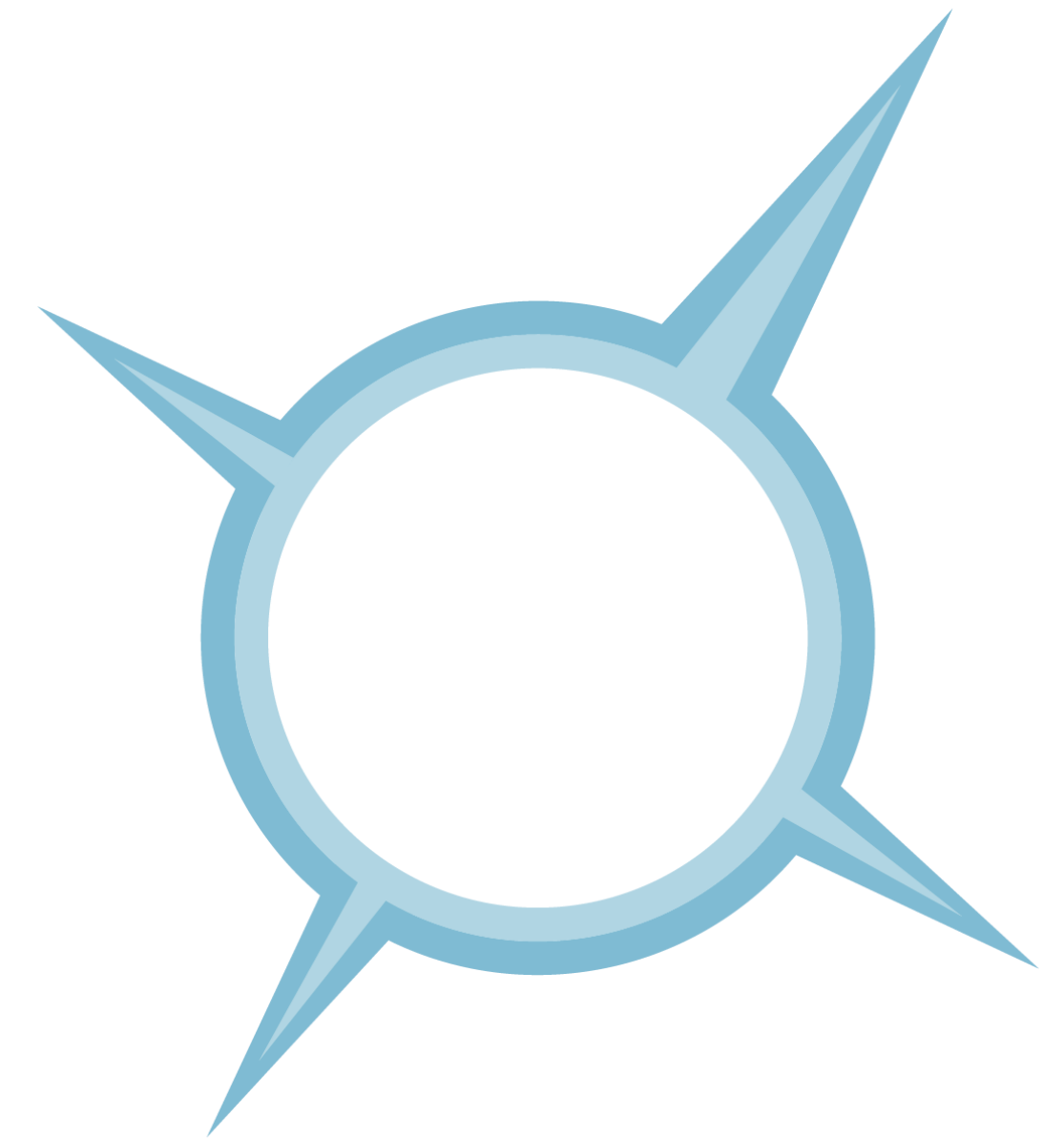
www.menti.com



Questions?

Proteus 2018/2019 Member Feedback

- What has worked well?
- What could be improved?



#WeCanMakeChange