

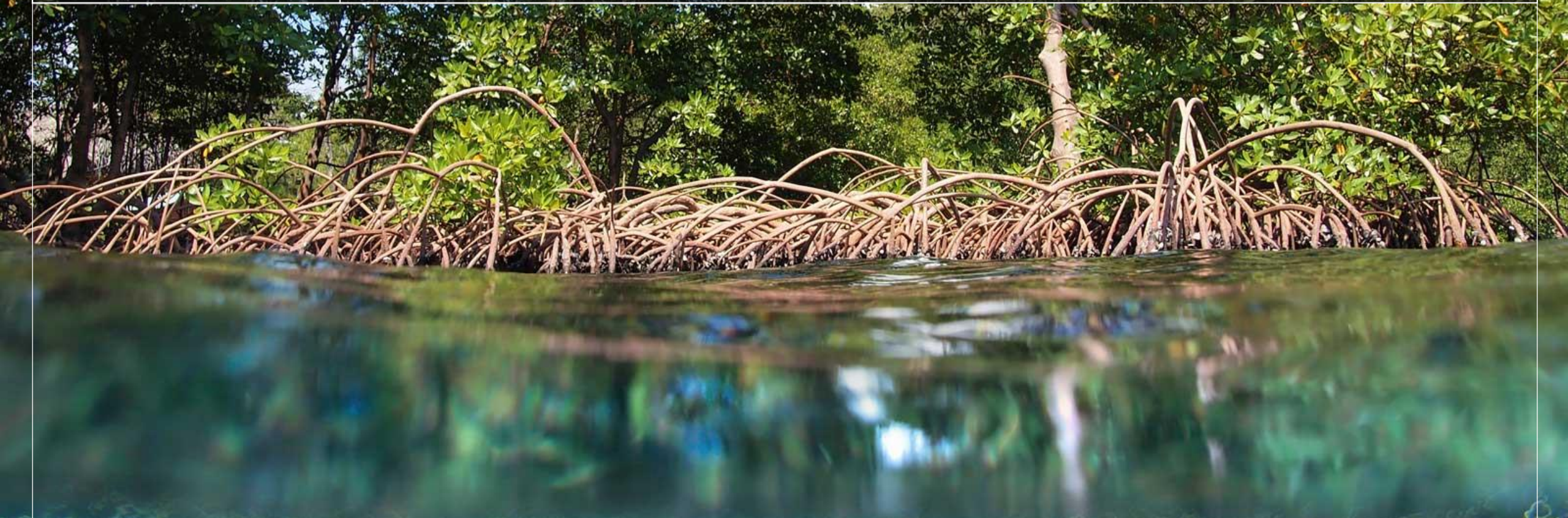


United Nations Environment
World Conservation Monitoring Centre

PROTEUS ANNUAL MEETING

20th – 22nd June 2018, David Attenborough Building, Cambridge, UK





EXPLORING DIFFERENT MODELS OF INDICATOR DEVELOPMENT

TOWARDS A BIODIVERSITY FRAMEWORK

Proteus Annual Member's Meeting | June 20-22, 2018 | Cambridge, UK

Leonardo Viana

Director, Responsible Mining + Energy

Anne Dekker

Vice President, Environment

CONSERVATION
INTERNATIONAL



BHP

AGENDA

- Context
- Project
- Six-Step Framework
- Pressure-State-Response
- Desktop pilot results
- Learnings
- Next Steps
- Questions



BHP



WORKING TOGETHER TO DELIVER BHP PUBLIC TARGETS

- BHP announced new public Health, Safety, environment and Community Targets for the FY2017-FY2022 period, including the following target for biodiversity:

Improve marine and terrestrial biodiversity outcomes by developing a framework to evaluate and verify the benefits of our actions*, in collaboration with others

- BHP is progressing this target with CI, via the BHP-CI Alliance - a seven-year partnership to deliver enduring benefits for biodiversity, ecosystems and other environmental resources

* To apply to both company activities and social investments



BHP

FRAMEWORK PROJECT: PHASED APPROACH

Phase 1

- Assess CI tools OHI, LAF, FHI
- Review Proteus scoping survey
- Identify indicator groups

Phase 2

- Propose a biodiversity framework
- Desktop evaluation of 4 pilot site via data

Phase 3

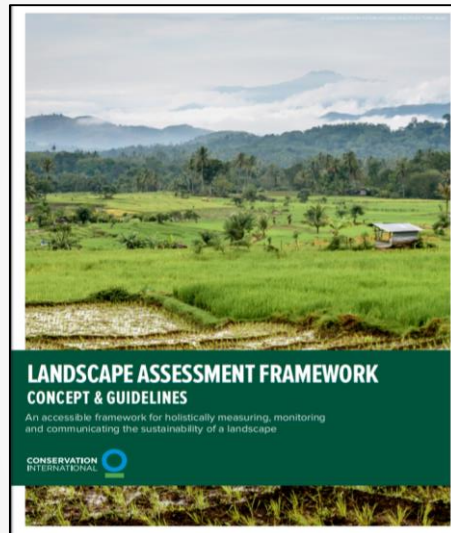
- **STEP 4:** Implement indicator
- **STEP 5:** Assess effectiveness over time/Report
- **STEP 6:** Adaptive management



BHP

FRAMEWORK PROJECT: PHASE 1

TOOLS



INDICATOR GROUPS



FRAMEWORK PROJECT: PHASE 2

Phase 2

- Framework
- Pilot

- Six-Step Framework approach
 - ✓ **STEP 1:** Global-level screening & scoping
 - ✓ **STEP 2:** Site-level assessments
 - ✓ **STEP 3:** Indicator selection

STEP 4

STEP 5

STEP 6



Next phase of work

- Pressure-State-Response model



BHP

APPROACH

STEP 1: Screening/ Scoping

*Implemented by:
Corporate-level
environmental staff*

*Outcome: All sites
grouped into either
Tier 1 or Tier 2*

Global level datasets assessment
of Species + Habitats via global data tools (IBAT)

TIER 1 (Selection criteria)

(1) Species - IUCN Red List; (2) Habitats - (IUCN Category I-IV and IFC CH; (3) Environment and Climate Change GLD

TIER 2

STEP 2: Site assessment

*Implemented by:
Site-level environmental
managers*

*Outcome: Refinement of
STEP 1 findings based on
local data*

TIER 1

Conduct additional site-level assessments to confirm STEP 1 findings (e.g. localized assessments using local regulatory/ permitting requirements, local datasets, and stakeholder engagement)

TIER 2

Conduct additional site-level assessments to confirm STEP 1 findings (e.g. localized assessments using local regulatory/ permitting requirements, local datasets, and stakeholder engagement)

STEP 3: Select indicators

*Implemented by:
Site-level managers*

TIER 1

Apply P/S/R/ indicators to identified sites and biodiversity

TIER 2

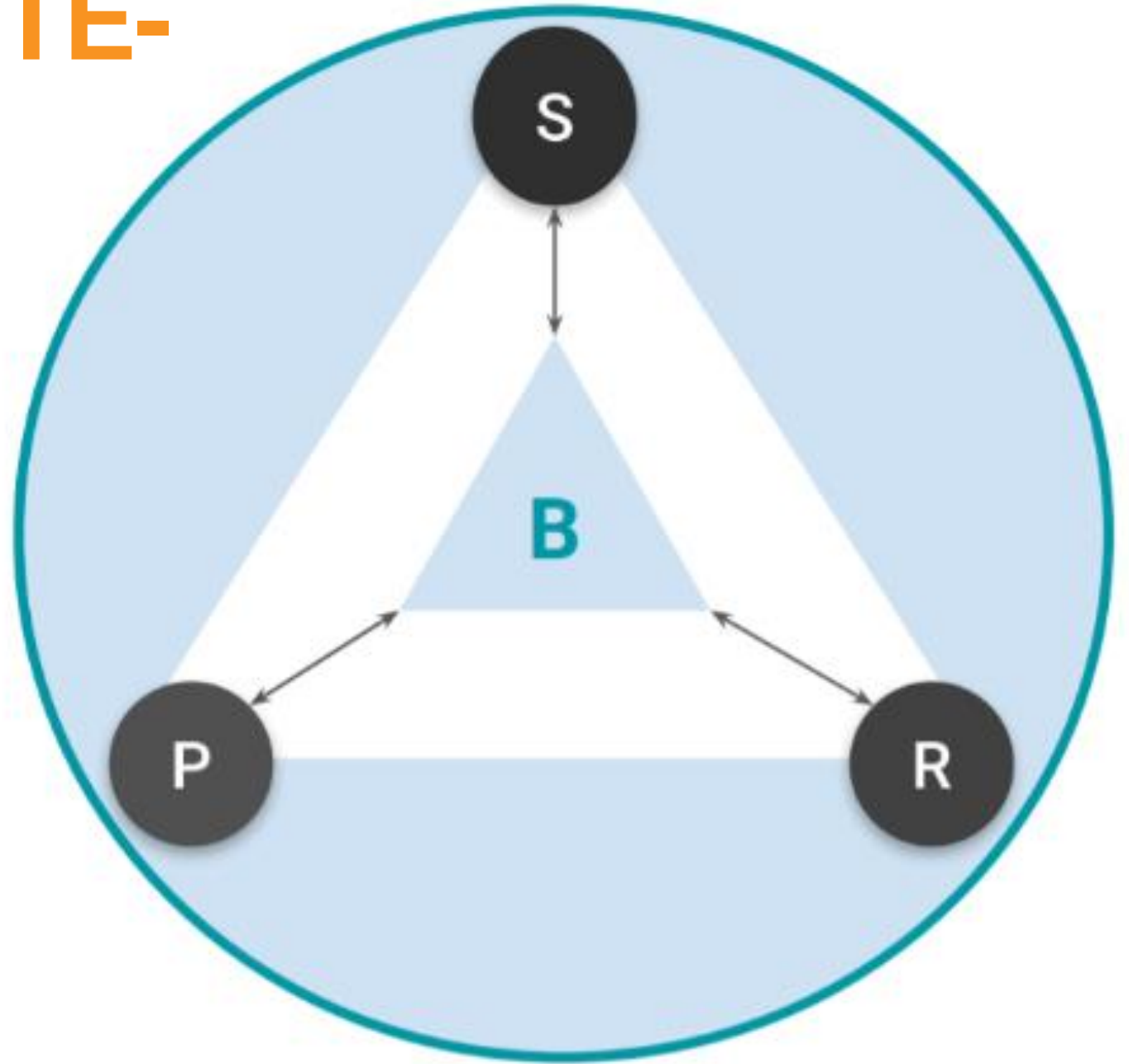
Apply R indicators to identified sites as per regulatory requirements (e.g. baseline assessments, EMP±, BAP±, GLD 9)



BHP

PRESSURE-STATE-RESPONSE MODEL

- As reflected in March workshop - importance of looking at indicators other than just 'state'



PILOT RESULTS - SITE A

STEPS

- | | | |
|---|---|---|
| <u>1</u> | <u>2</u> | <u>3</u> |
| <ul style="list-style-type: none"> • 2 PA's • 4 Species | <ul style="list-style-type: none"> • +2 KBAs • -2 Species | <ul style="list-style-type: none"> • 1 Species • P, S, R indicators |

OUTCOMES

- | | | |
|--|--|--|
| <ul style="list-style-type: none"> • Tier 1 | <ul style="list-style-type: none"> • Tier 1 | <ul style="list-style-type: none"> • Species "A1" • P = Track impact to habitat in the region • S = Monitor A1 population status • R = Is a management plan in place for A1? |
|--|--|--|

Results table

	PA	KBA	Species		
			CR	EN	VU
STEP 1	2	--	--	2	2
STEP 2	--	2*	--	--	--
Total IBC	2	2	--	2	2



BHP

PILOT RESULTS - SITE D: SOCIAL

INVESTMENT STEPS

- | <u>1</u> | <u>2</u> | <u>3</u> |
|--|--|--|
| <ul style="list-style-type: none">• 7 CHs• 50 Species | <ul style="list-style-type: none">• None | <ul style="list-style-type: none">• 4 R indicators |

OUTCOMES

- Tier 1
- Tier 1

R =

- Funds leveraged,
- # of Red List Species protected,
- Hectares conserved,
- Long-term financing established

Results table

	PA	KBA	Species		
			CR	EN	VU
STEP 1	5	2	8	9	33
STEP 2	--	--	--	--	--
Total IBC	5	2	8	9	33



BHP

LEARNINGS

IFC PS 6 CH

Area of
Influence

Adjacency

Buffers

Climate
change

Stakeholder
engagement

Framework
assessment
periodicity



BHP

QUESTIONS?



BHP

A large, silhouetted tree stands in the foreground of a savanna landscape. The sun is setting on the horizon, creating a warm, orange glow. The sky transitions from a deep blue at the top to a lighter orange near the horizon. The ground is a flat, grassy plain with some distant trees.

THANK YOU

For any questions, please contact
Leonardo Viana
Lviana@conservation.org

APPENDIX



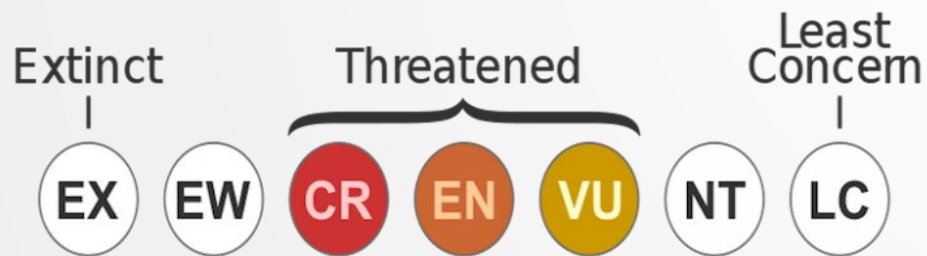
BHP

METHODOLOGY:

Important Biodiversity Components:

Any identified biodiversity related feature (i.e. a species, habitat or ecosystem service, etc.) deemed worthy of management and conservation due to regulatory, baseline assessment or inherent (i.e. threatened, endemic, migratory or similar status) or identified (e.g. through stakeholder consultation) uniqueness.

IUCN Red List of Species



IUCN Category I-VI Protected Areas

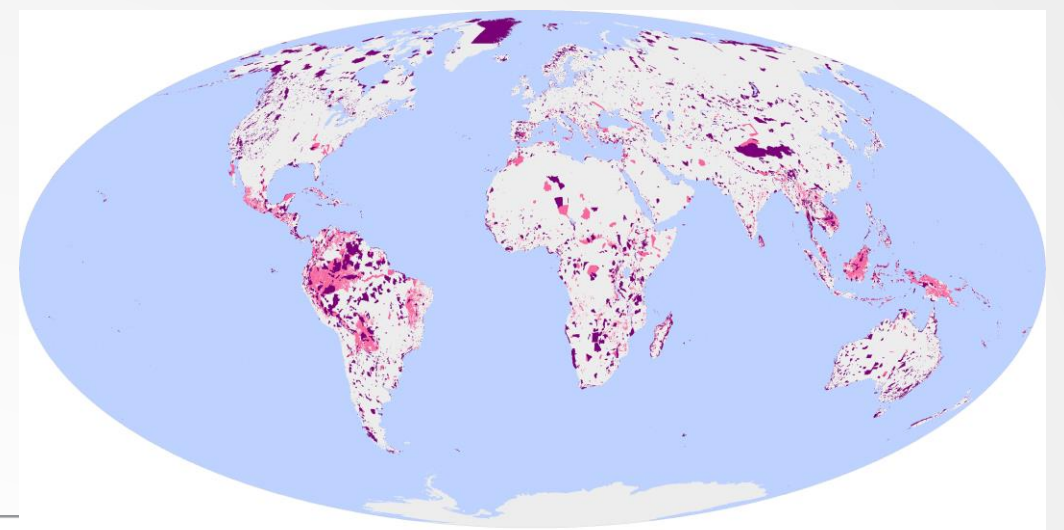
- I. Strict Nature Reserve or Wilderness Area
- II. National Park
- III. Natural Monument or Feature
- IV. Habitat/Species Management Area
- V. Protected Landscape/ Seascape
- VI. Protected area with sustainable use of natural resources



BHP

METHODOLOGY:

IFC Critical Habitat



Legend: ■ Likely ■ Potential Unknown

Criteria and scenarios	Description of biodiversity values
Criterion 1	Habitat of significant importance to Critically Endangered and/or Endangered species
Criterion 2	Habitat of significant importance to endemic and/or restricted-range species
Criterion 3	Habitat supporting globally significant concentrations of migratory species and/or congregatory species
Criterion 4	Highly threatened and/or unique ecosystems
Criterion 5	Areas associated with key evolutionary processes
Scenario A	Other recognized high biodiversity values that might also support a Critical Habitat designation
Scenario B	Internationally and/or nationally recognized areas of high biodiversity value that in general will likely qualify as Critical Habitat

Brauneder KM, Montes C, Blyth S, Bennun L, Butchart SHM, Hoffmann M, et al. (2018) Global screening for Critical Habitat in the terrestrial realm. PLoS ONE 13(3): e0193102. <https://doi.org/10.1371/journal.pone.0193102>



BHP

PILOT RESULTS - SITE B

STEPS

1

- 2 KBA's
- 4 Species

2

- +4 Species

3

- 2 Species
- P, S, R indicators

OUTCOMES

- Tier 1

- Tier 1

- Species "B1" & "B2"
- P (B1+B2): Identify pressures
- R (B1+B2): Establish monitoring plan
- S (B1): Capture rate of translocated individuals
- S (B2): Monitor over time

Results table

	PA	KBA	Species		
			CR	EN	VU
STEP 1	--	2	--	3	1
STEP 2	--	--	2	2	--
Total IBC	--	2	2	5	1



BHP

PILOT RESULTS - SITE C

STEPS

1

- 3 Species

2

- None

3

- 2 Species
- P, S, R indicators

OUTCOMES

- Tier 1

- Tier 1

- Species “C1” & “C2”
- P (C1+C2): Identify pressures
- R (C1+C2): Establish monitoring plan
- S (C1): Capture rate of translocated individuals
- S (C2): Monitor over time

Results table

	PA	KBA	Species		
			CR	EN	VU
STEP 1	--	--	--	2	1
STEP 2	--	--	--	--	--
Total IBC	--	--	--	2	1



BHP



United Nations Environment
World Conservation Monitoring Centre

PROTEUS ANNUAL MEETING

20th – 22nd June 2018, David Attenborough Building, Cambridge, UK

