



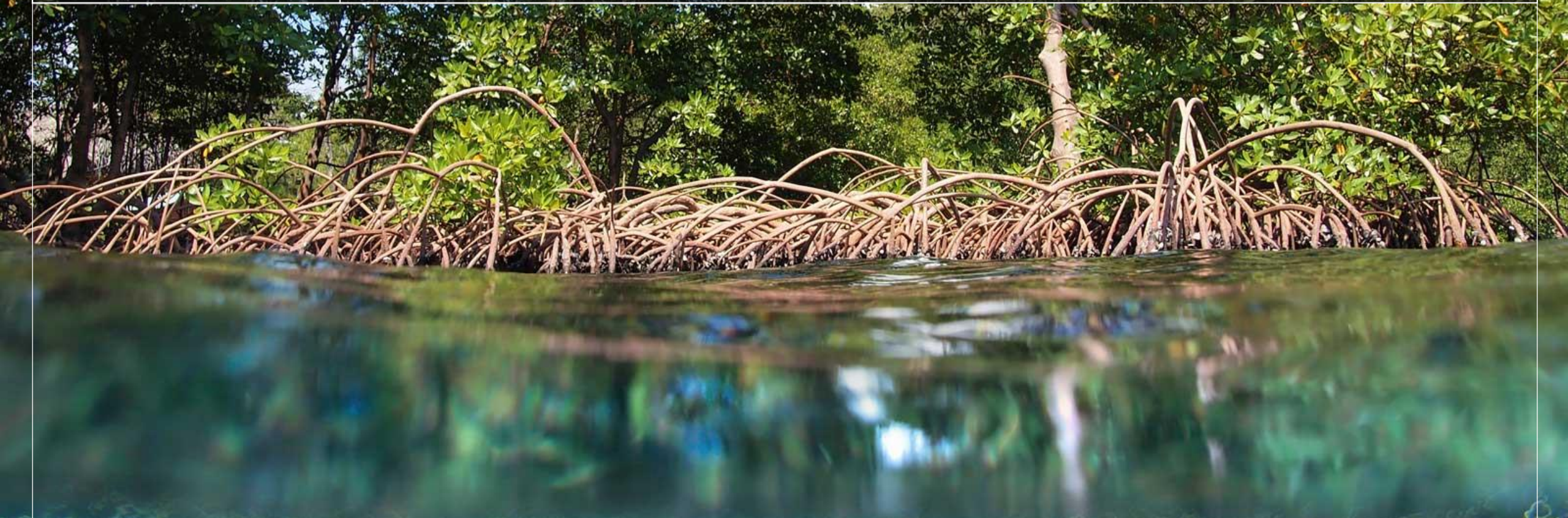
United Nations Environment
World Conservation Monitoring Centre



PROTEUS ANNUAL MEETING

20th – 22nd June 2018, David Attenborough Building, Cambridge, UK





EXPLORING DIFFERENT MODELS OF INDICATOR DEVELOPMENT

Convergence of methodologies for assessing the biodiversity footprint of financial institutions and businesses

Cambridge, Proteus Annual Meeting 2018

Joshua Berger,
GBS Project manager





- Contacts through the EU B@B
- March 2018: launch of the informal working group
- Objective: establish a **solid basis (common ground) for a biodiversity footprinting methodology** for financials in 2018
- Relevant for non-financial institutions (and CDC Biodiversité works with about 20 non-FI through the B4B+ Club, with an adapted approach)



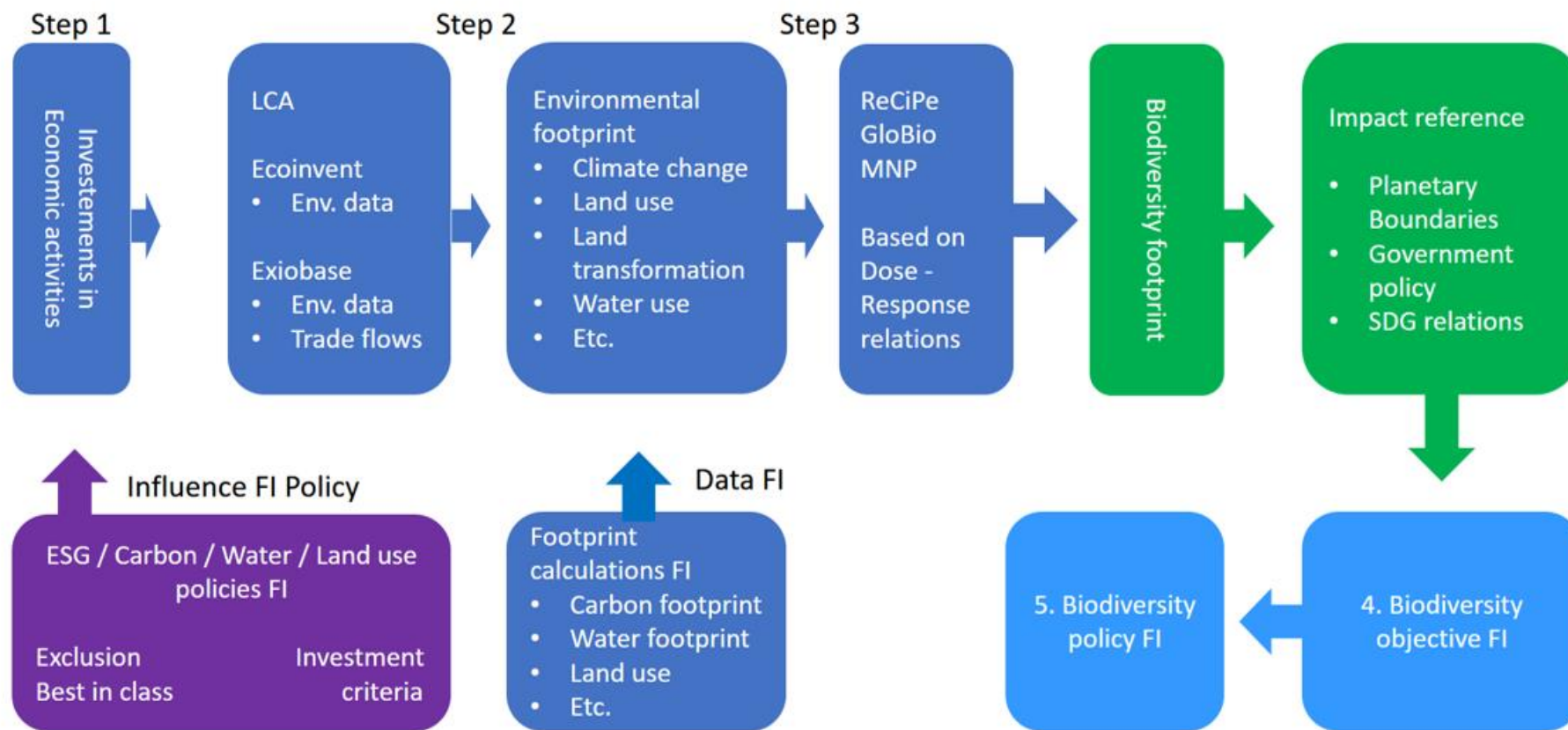
1. CBD targets or national assessment
 2. **Portfolio / corporate** assessment
 3. **Supply** comparison
 4. **Product** assessment
-
5. **Project** assessment



- ❑ Global and for all economic activities
- ❑ One metric for all types of biodiversity, focused on biodiversity itself & all species are equal
- ❑ Transparent & consensual
- ❑ Understandable
- ❑ Quantitative link between pressures and impacts
- ❑ Reactive to changes
- ❑ Complementary of and compatible with local indicators

- In line with the Greenhouse Gas Protocol's approach
- The attribution of the impacts must be consistent with the accounting choices of the entity assessed in terms of **what it controls**:
 - Financial control (> 50%)
 - Operational control
 - Share of the assets owned (*pro rata*)

Our approach – methodological steps



- ❑ To **avoid, reduce** and **offset** impacts:
 - ❑ Additional measures and safeguards are needed
 - ❑ Complementary indicators can provide guidance

- ❑ For instance, for location-specific characteristics like *“Proximity of HCVA’s/protected areas”* or *“Presence of endangered or threatened species”*:
 - ❑ Company has a **Biodiversity Management Plan** in place (e.g. area registered as a VCA)
 - ❑ Indicators: **field ecological monitoring, Red List-based indicator**



Picture: David Behrens

- ❑ End of 2018: publication of a short **paper on our common approach**
- ❑ 27-29 November 2018: BBOP and EU B@B annual meetings, **building roadmaps to achieve net positive impact**
- ❑ November 2018: side-events at CBD COP14
- ❑ Use of biodiversity footprints in strategic business decisions and investments
- ❑ Enabling environments for biodiversity footprints to facilitate a biodiversity net gain future

Contact:

Joshua Berger
GBS Project Manager

Mail:
joshua.berger@cdc-biodiversite.fr

Tél. : +33 (0)1 80 40 15 41

Antoine Cadi
Research and Innovation Director

Mail:
antoine.cadi@cdc-biodiversite.fr

Tél. : +33 (0)1 80 40 15 16
Mobile. : +33 (0) 6 21 63 18 00



Thank you for your attention !



United Nations Environment
World Conservation Monitoring Centre

PROTEUS ANNUAL MEETING

20th – 22nd June 2018, David Attenborough Building, Cambridge, UK

