

Proteus Quarterly Update

January to March 2021

UN  WCMC
environment
programme

proteus

Foreword

As we open up the new year with the new Phase of the Proteus Partnership, I am pleased to present the first Proteus Quarterly of 2021, which details the accomplishments and ground-breaking work of the United Nations Environment Programme World Conservation Monitoring Centre (UNEP-WCMC) from January to March.

We have hit the ground running within the Centre: developing a new restoration resilience data layer, developing a Global Islands Dataset, creating a Technical Brief on the Migratory Connectivity in the Ocean, and sharing two new layers within the much-anticipated launch of NatureMap. All of this in addition to providing key updates to the World Database on Protected Areas and IBAT.

Building capacity within Proteus Partner organisations is a fundamental priority for UNEP-WCMC and I am delighted to share we have created two new training modules for Investor Relation groups and Senior Management. These aim to increase the understanding of biodiversity within respective teams and business functions.

During this Quarter, we also launched the Align project, which will aim to support businesses and other stakeholders in developing standardised natural capital accounting practices, including a standardised approach to biodiversity measurement. As a paramount topic for businesses, we look forward to sharing updates with you on this project in the months to come.

Additionally, due to the extensive expertise within the Centre we have contributed to leading publications such as the Dasgupta Review, published scientific papers on indicators for site-based conservation and mainstreaming the post-2020 global biodiversity framework. We have also developed a working paper on the impact of agricultural supply chains on biodiversity.

As this report highlights, UNEP-WCMC commits to deliver high-quality biodiversity data, exploring and maintaining leading roles in fundamental topics such as biodiversity measurement, and continue to assist Proteus Partners in embedding biodiversity within their decision making.



Jonty Knox, Senior Programme Officer, UNEP-WCMC

Contents

1. Highlights
2. Protected Areas
3. IBAT
4. Marine
5. Resources
6. Publications
7. Calendar

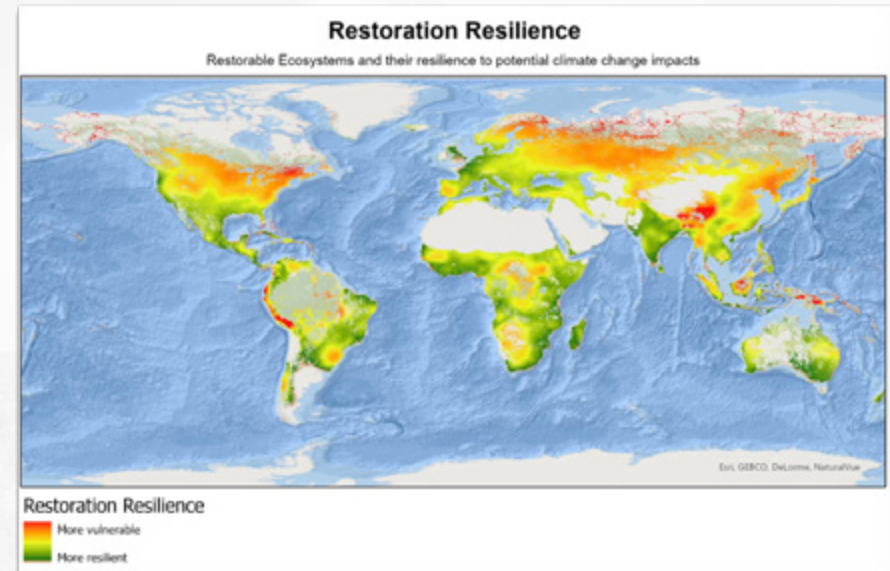


1.1 Highlights

Release of a new restoration data layer

UNEP-WCMC has developed a restoration resilience layer and user guide to help the private sector identify restoration opportunities that are resilient to climate change

- The spatial layer identifies where climate change considerations are most critical for effective ecosystem restoration, accounting for factors such as the severity of, and sensitivity to, climate change impacts.
- The layer could help indicate how effective a restoration action would be in the long term.



 [Access Resource](#)



Point of Contact
Hazel Thornton



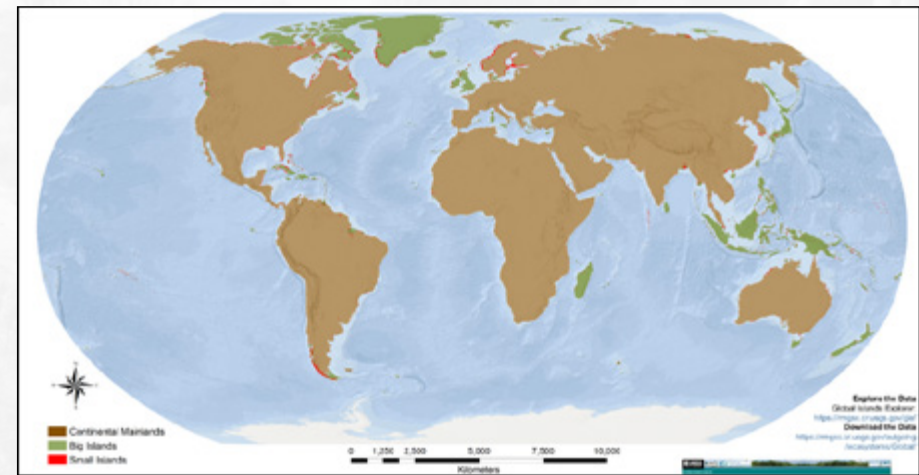
Point of Contact
Sara Pruckner

1.2 Highlights

Release of a state-of-the-art Global Islands Dataset

UNEP-WCMC partnered with USGS, ESRI, Island Conservation and The Nature Conservancy to create a 30m-resolution dataset of global islands

- The dataset includes 340,691 islands, with information on its name (when available), size, size class, length of coastline, and the tectonic plate to which it is attached. This was also complemented by a book chapter (see Publications).



Access Dataset



Global Islands Explorer

proteus



Point of Contact
Osgur McDermott
-Long

1.3 Highlights

New Phase of Proteus 2021-2025

This year is an important one for the Partnership, as we launch the new phase and work together towards a green recovery

- A range of exciting new tools, documents and training sessions have already been delivered to help accelerate and scale decision support tools and capacity building.
- Several global meetings on climate and biodiversity are planned towards the end of 2021, providing an opportunity for Proteus to strengthen and increase business exposure to the global policy agenda on nature.



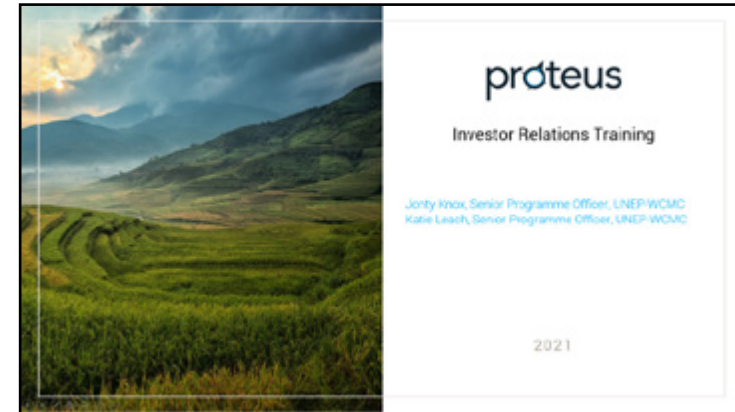
Point of Contact
Jonty Knox

1.4 Highlights

New trainings developed to build the business case for biodiversity

UNEP-WCMC has created new training materials aimed at increasing the understanding and resonance of biodiversity within key teams and functions.

- The Investor Relations training package includes new content on ESG, investor perceptions and the increasing pressures on businesses to respond.
- The Senior Management training outlines the business case for biodiversity, opportunities for companies to respond and provides an horizon scan of key developments and priorities.
- In Q1 these trainings have already been delivered to over 120 participants.



1.5 Highlights

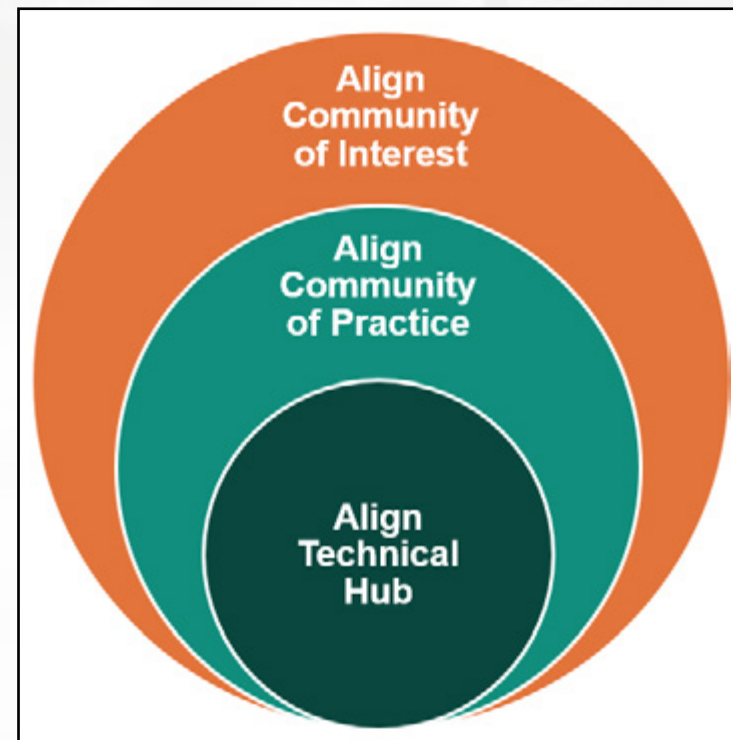
UNEP-WCMC launches EU funded Align project

Align will assist the European Commission's efforts to support businesses and other stakeholders in developing biodiversity inclusive standardised natural capital accounting practices.

Key outputs from the Project:

- Best practice exchange on natural capital management accounting
- Guidance for site-based/supply chain companies and financial institutions
- Standardised approach for corporate biodiversity measurement
- Modules linking to Priority Initiatives to facilitate uptake
- Establishing education, research and innovation needs

Align is a business-driven project. Businesses and other stakeholders can choose their level of engagement and aid in the delivery of fit-for-purpose materials.



Point of Contact
Julie Dimitrijevic

2.1 Protected Areas

World Database on Protected Areas (WDPA) and World Database on OECMs

Several data updates have been made to the WDPA (no updates to the WD-OECM in this period), including:

- **Philippines:** A complete update for the protected areas of the Philippines for the first time since 2012 and includes the addition of 47 sites.
- **ASEAN Heritage Parks:** 9 new ASEAN Heritage Parks were added to the WDPA, including Agusan Marsh Wildlife Sanctuary which was designated in 2018.
- **OSPAR:** working with the OSPAR secretariat, UNEP-WCMC have included a [proposed marine protected area](#) in the Area Beyond National Jurisdiction (ABNJ) – the first in several years. This proposed MPA is over 500,000 km² and will represent one of the largest MPAs in the North Atlantic.
- **Republic of Korea:** a complete update of national designations. Two new Wetland Protected Areas ('Cheorwon Yongyangbo Wetland Protected Area' and 'Gwangju Jangrok Wetland Protected Area') have been added, and Special Measure Area ('Daecheong lake special measure areas for water quality conservation, class 1 district, 2 district') has increased in size, now covering 703 km².

| | |
|---|--------|
| Number of countries updated | 36 |
| Net increase in records | 11,143 |
| Percent of records updated or validated | 2% |



Point of Contact
Jessica Stewart

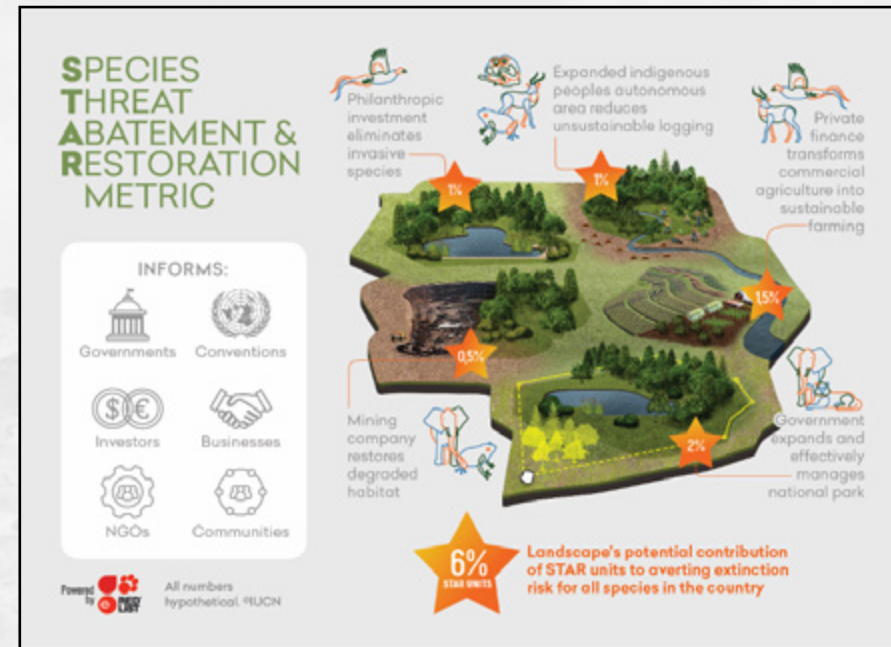
3.1 IBAT



IBAT 3.0

New functionality

- The recently published [Species Threat Abatement & Restoration Metric \(STAR\)](#) is currently being developed as a new Report in IBAT and will be available mid 2021.
- The IUCN have developed a [briefing note](#) to provide additional information about the STAR Metric.
- Companies that would like to trial STAR and provide feedback can confirm their interest by emailing star@ibat-alliance.org



Point of Contact
Jonty Knox

3.2 IBAT



IBAT 3.0

User updates and enhancements

- IBAT account managers can now download summary statistics about their organisation's usage of IBAT Projects, Reports and GIS Downloads in their 'Account Settings'.
- IBAT has launched a new [briefing note](#) on biodiversity screening for wind and solar energy investments.



 [Access Resource](#)



Point of Contact
Jonty Knox

3.3 IBAT



IBAT 3.0

Technical updates and enhancements

Improvements have been made to:

1. IBAT Server
2. Text explaining IBAT Report methodology,
3. KBA hyperlinks on the data map now link to KBA website,
4. Additional IBAT tutorials have been added
5. IBAT Report map coloration, and
6. User feedback has allowed IBAT to add clarity to the spatial file upload functionality.



 [Access Resource](#)



Point of Contact
Jonty Knox

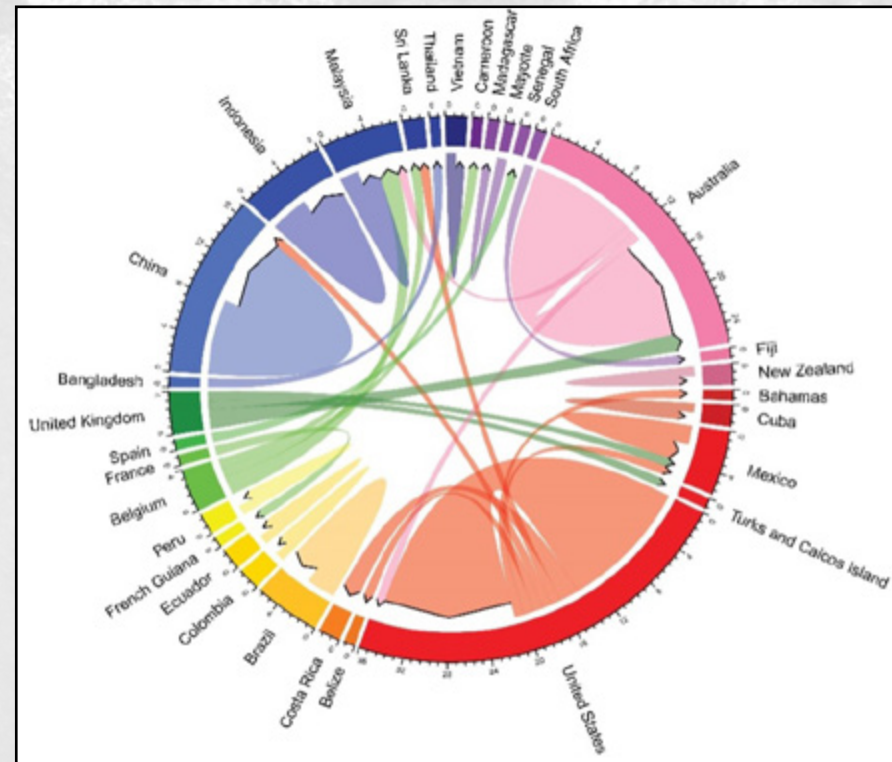
4.1 Marine

New Resources

New paper published on “Challenges and recommendations for equitable use of aerial tools for mangrove research “

- Unmanned aerial vehicles (UAVs) can advance mangrove monitoring-this study looks at who uses UAVs, and where.
- UAV mangrove research is disproportionately carried out by high-income countries and there is only limited cooperation between countries of different income levels.
- Strategic partnerships & technology transfer between countries with high capacity and those with high mangrove coverage could improve research globally.

“Countries leading on studies using aerial tools for mangrove research and where the respective studies are conducted”



Point of Contact
Sara Pruckner

4.2 Marine

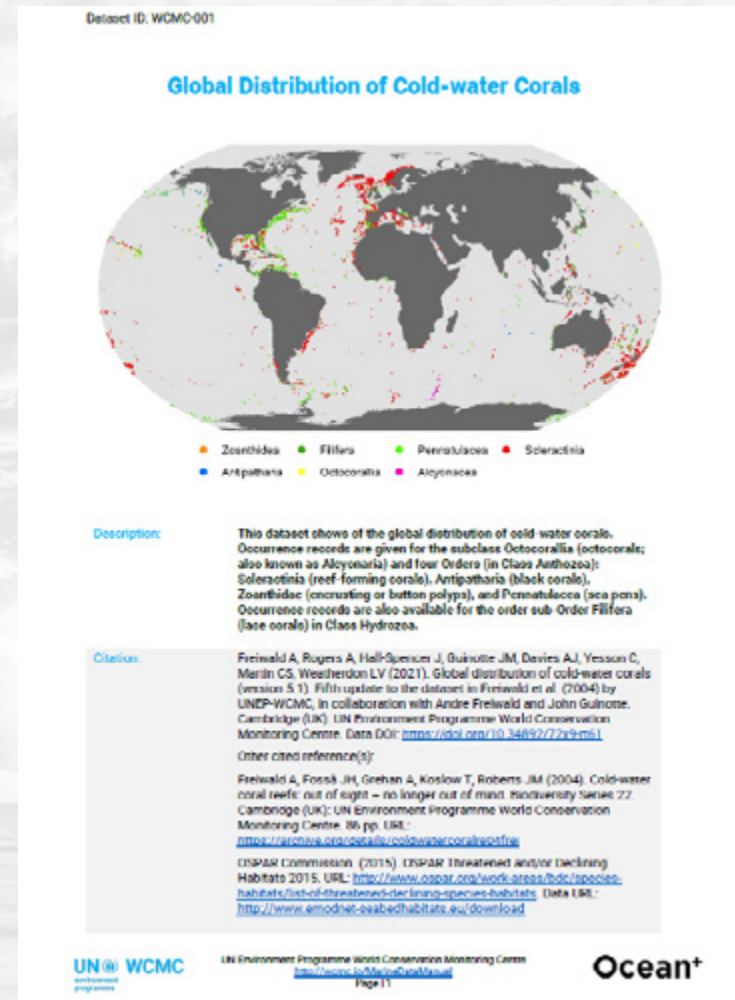
Data and metadata improvements

Metadata updated across ODV datasets

- DOIs were added to all UNEP-WCMC datasets on the Ocean Data Viewer, which will improve tracking of datasets & updated versions long-term.

Removed outdated values in ocean habitat datasets

- Protection status & ISO3 codes were removed from ocean habitat datasets on the Ocean Data Viewer. This will prevent the spreading of inaccurate or outdated information.



 Access Resource



Point of Contact
Sara Pruckner

4.3 Marine

Data and metadata improvements

Coordinated Global Research Assessment Of Seagrass Systems (C-GRASS) is advancing a global synthesis of seagrass data

- Ocean+ and MarineGEO are coordinating a group of >45 researchers to bring together a new global synthesis of seagrass data.
- Since the launch of the project in 2020, progress has been made in the following areas:
 - More datasets have been gathered,
 - The seagrass Essential Ocean Variable spec sheet has been finalized,
 - and a common data schema, in line with DarwinCore, has been proposed



Point of Contact
Sara Pruckner

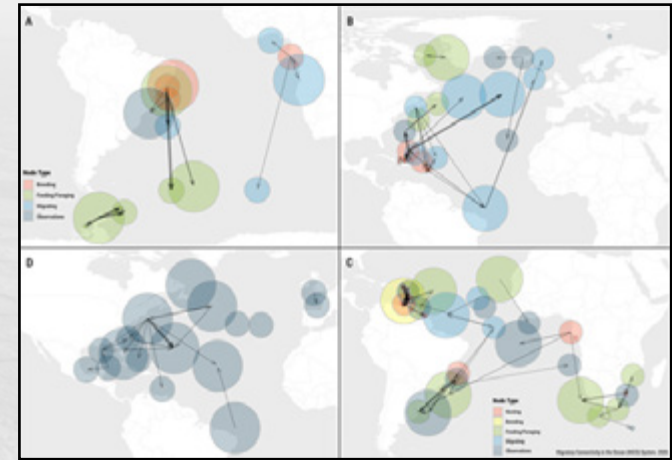
5.1 Resources

Technical Brief: Advancing understanding of Migratory Connectivity in the Ocean (MiCO)

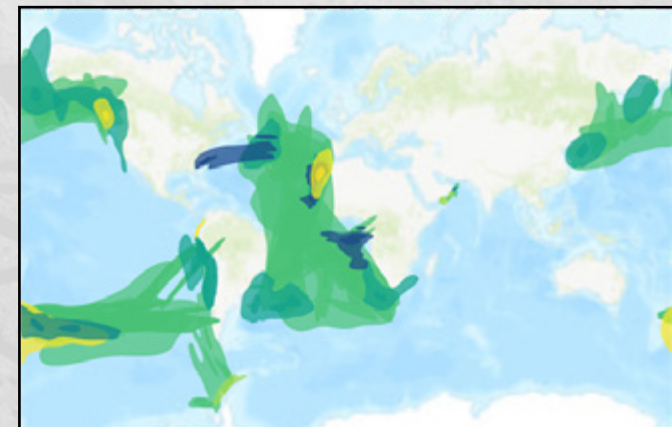
MiCO is a state-of-the-art product that generates actionable data on how marine migratory species connect the ocean

- This technical brief outlines advances made in the MiCO system (mico.eco). These advances are an important step toward producing the network and area-use data required to support high-level screening for areas of importance to threatened migratory and congregatory species (e.g. identifying critical habitat under the International Finance Corporation's Performance Standard 6).


Network models of the migrations of humpback whales (A & B), shortfin mako sharks (C) and leatherback sea turtles (D), connecting the coast of Brazil to activities and impact throughout the North and South Atlantic and the polar seas.



Area use models of important breeding, foraging and migrating areas for a selection of migratory species of turtles, seabirds and whales.



 [Access Technical Brief](#)

 [Download Sample Data](#)



Point of Contact
Lauren Weatherdon

5.2 Resources

Nature Map: Final global layers released!

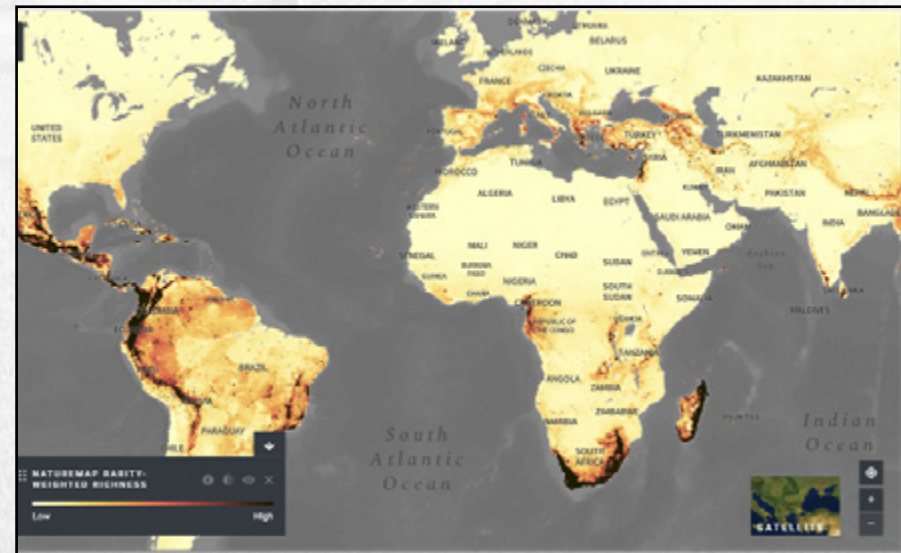
New globally consistent maps of terrestrial biodiversity, carbon stocks, water supply and other topics can now be explored via UN Biodiversity Lab

Layers which are currently available for Partners use include:

- Potential clean water provision*
[Portal Page](#) | [Web Service](#)
- Realized clean water provision*
[Portal Page](#) | [Web Service](#)
- Human pressures*
[Portal Page](#) | [Web Service](#)

Additional layers will be made available under Nature Map in the coming months, which will be shared with Partners once confirmed.

* Speak to the Proteus team about specific data restrictions regarding use by Proteus Partners (<https://www.proteuspartners.org/>).




 [Access Resource](#)



Point of Contact
Alex Ross

6. Publications

-  **Essential indicators for measuring site-based conservation effectiveness in the post-2020 global biodiversity framework**
Conservation Letters. Geldmann J...Deguignet M, Burgess N, Kingston N, Klimmek H, Vincent C, et al., (2020)– Available here
-  **Compendium of Earth Observation contributions to the SDG Targets and Indicators**
O'Connor...de Lamo X, Simonson W, Allison H, et al., (2021)– Available here
-  **Integrating a gender perspective in the post-2020 global biodiversity framework**
UNEP-WCMC and UN Woman. Despot-Belmonte K and Collantes-Labale (2020)– Available here
-  **Four steps for the Earth: mainstreaming the post-2020 global biodiversity framework**
One Earth. Milner-Gulland...Juffe-Bignoli D, et al., (2021)– Available here
-  **Measuring the impact of agricultural supply chains on biodiversity**
UNEP-WCMC and EU Business @ Biodiversity Platform. Brooks A, Dimitrijevic J, Dunn K, Sehra K et al., (2021) - Available here
-  **Dasgupta Review, Chapter 15, Trade and the Biosphere**
Contributions from Vause.J (2021)– Available here
-  **Challenges and recommendations for equitable use of aerial tools for mangrove research**
Frontiers in Marine Science. Hsu A, Pruckner S, Satterthwaite E, Weatherdon L, Hadley K and Nguyen E (2021)– Available here
-  **The new METT-4 was launched on Protected Planet**
Available here

7. Events Calendar

Proteus Partner Events

- May** Technical Briefing Note – Brownfield sites
- May** Horizon Scanning Webinar – Engagement with the UN Decade on Restoration
- June** Horizon Scanning Webinar – International Maritime Organisation (IMO) designations
- June** Technical Briefing Note – Green recovery
- Aug** Technical Briefing Note – Area of influence
- Sept** Horizon Scanning Webinar – Biodiversity beyond national Jurisdiction
- Sept** Technical Briefing Note – Energy transition
- Oct** Horizon Scanning Webinar – Biodiversity measurement

External Events

- April - Dec** Geneva Nature Based Solutions Dialogues
[Event Details](#)
- May** Launch of the [ENCORE](#) Biodiversity Module
- June** Launch of the new Ocean+ Habitats website
- June** Launch of the UN Decade on Ecosystem Restoration
[Event Details](#)
- June** IPBES-8 Plenary
[Event Details](#)
- Oct** Fifteenth meeting of the Conference of the Parties (COP) to the Convention on Biological Diversity
[Event Details](#)