

## WDPA Data Status Report

---

# Honduras

March 2020

### About this Report and the World Database on Protected Areas (WDPA)

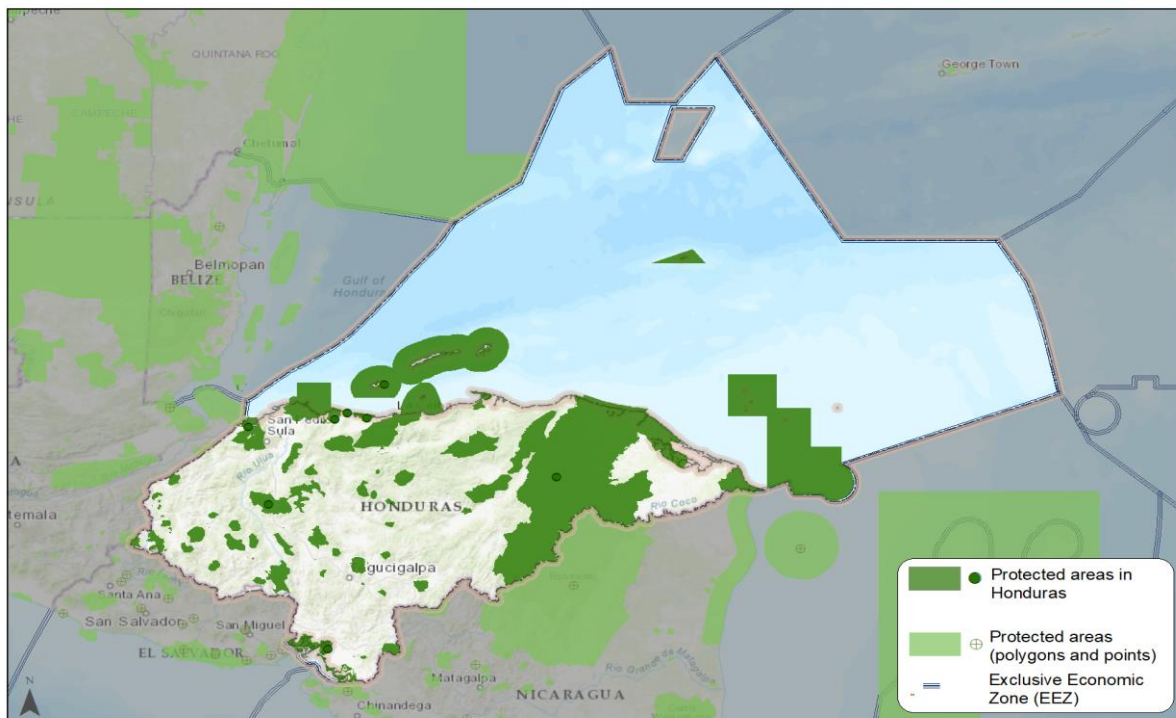
---

The WDPA is the most comprehensive global dataset on terrestrial and marine protected areas, incorporating the official UN List of Protected Areas. The WDPA dataset is not necessarily a complete representation of all the protected areas which have been designated in country. The quality of the WDPA depends on the accessibility of accurate, comprehensive, up-to-date protected areas information from data holders.

This report describes the current status of data in the WDPA for all sites included in the March 2020 monthly release for Honduras. The WDPA is updated each month, and the information in this factsheet may have been superseded by a more recent update.

### Map showing protected areas in the WDPA

---



The boundaries and names shown and the designations used on maps do not imply official endorsement or acceptance by the UN Environment Programme or contributory organisations. Boundaries for Exclusive Economic Zones (EEZs) may be partially displayed where protected area records are not present throughout the whole EEZ. EEZs are not displayed where countries are landlocked.

## Protected areas data in the WDPA for Honduras

There are 119 protected area records stored in the WDPA for Honduras, 104 are national-level protected areas with 15 designated under international and regional agreements or conventions.

93% of the data have boundaries in polygon format, with the remaining 7% depicted in point format (i.e. a single latitude and longitude point for the protected area). See Figure 1.

Of the 119 protected areas, 6 (5%) include a marine component. These protected areas may be either partially or completely within the marine environment.

### ***Data for protected areas designated under international and regional conventions and agreements***

There are 15 protected areas in the WDPA designated under international or regional conventions or agreements.

1 is a World Heritage Site (WHS); 11 are Ramsar Wetlands of International Importance; 3 are UNESCO Man and the Biosphere Reserves (MAB). See Figure 2.

Figure 1: Ratio of points to polygons

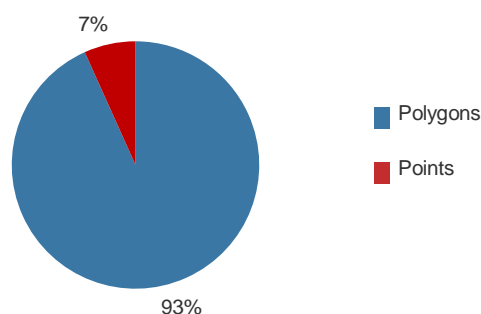
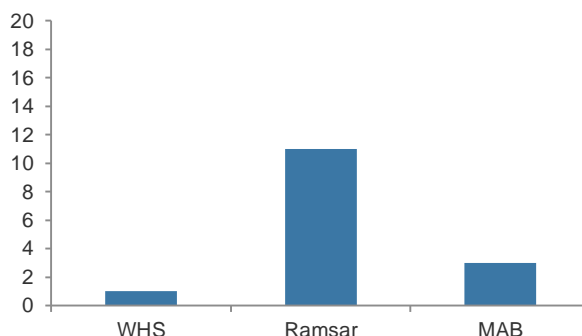


Figure 2: Number of WHS, Ramsar and MAB sites

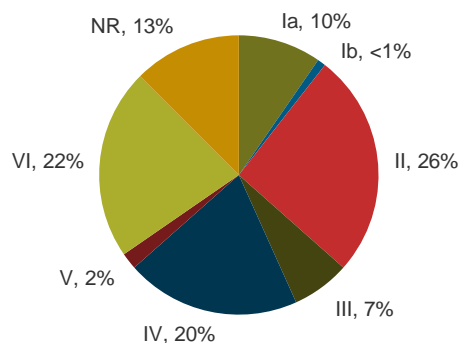


### ***Data for national-level protected areas***

There are 104 national-level protected area records in the WDPA. IUCN Management Categories have been reported for 103 of these records. The remaining 1 features are recorded as Not Reported.

Figure 3 shows the allocation of IUCN Management Categories across national-level protected area records in the WDPA (numbers of sites in each category are shown in Table 2 at the end of this report).

Figure 3: National-level protected areas by IUCN Management Category



## Completeness of WDPA Data Attributes for Honduras

The WDPA requires that a minimum set of information is provided with each protected area record. These data attributes are defined in the WDPA User Manual.

Table 1 shows the extent to which key attributes have been reported by data providers for all protected area records in the WDPA for Honduras.

Table 1: Completeness of selected attributes

Attribute	Completeness
IUCN Category	80%
Status (designated or proposed)	100%
Status Year	100%
Governance Type	89%
Management Authority	89%
Link to Management Plan	67%

The WDPA User Manual 1.6 can be viewed at [http://wcmc.io/WDPA\\_Manual](http://wcmc.io/WDPA_Manual).

## Data sources in the WDPA for Honduras

All data in the WDPA have been obtained or validated from a single source for Honduras.

Figure 4 shows the breakdown of when protected area records in the WDPA were last updated or validated.

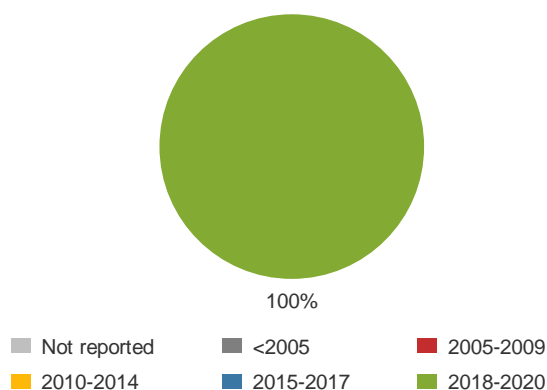
Data for protected areas designated under international agreements and conventions have been sourced from the relevant convention secretariat. This includes: UNESCO World Heritage Centre, Ramsar Convention Secretariat and UNESCO Man and The Biosphere Programme.

Data for national-level protected areas in the WDPA have been sourced from national authorities wherever possible. Information may also be supplemented by data from other agencies or organisations working in each country. As part of the update process for national data, national authorities are given the opportunity to review, validate and, where necessary, edit all existing WDPA records for their country. All updates to the WDPA by national authorities take priority over other sources and are considered to be the authoritative version.

All records in the WDPA have a reported source for Honduras.

National-level data in Honduras are provided by one source: Departamento de Áreas Protegidas / Instituto de Conservación Forestal.

Figure 4: Percentage of records updated or validated by year



**Table 2: WDPA Data for Honduras (as of March 2020)**

For more information on the categories below please refer to the Biodiversity A-Z, [www.biodiversitya-z.org](http://www.biodiversitya-z.org)

	Polygons	Points	Total
<b>Realm: terrestrial or marine</b>			
Terrestrial	90	7	97
Coastal	16	0	16
Marine	5	1	6
<b>Status: designated or proposed</b>			
Designated	93	8	101
Established	0	0	0
Proposed	17	0	17
Status not reported	0	0	0
<b>Areas designated under international conventions and agreements</b>			
UNESCO World Heritage Sites (natural / mixed)	1	0	1
Wetlands of International Importance (Ramsar sites)	3	8	11
UNESCO Man and Biosphere Reserves	3	0	3
<b>Areas designated under regional conventions and agreements</b>			
Baltic Sea Protected Area (HELCOM)	0	0	0
Marine Protected Area (CCAMLR)	0	0	0
Marine Protected Area (OSPAR)	0	0	0
Site of Community Importance (Habitats Directive)	0	0	0
Special Protection Area (Birds Directive)	0	0	0
Specially Protected Area (Cartagena Convention)	0	0	0
Specially Protected Area of Mediterranean Importance (Barcelona Conv.)	0	0	0
<b>National-level Protected Areas: IUCN Management Category</b>			
Ia: Strict Nature Reserve	10	0	10
Ib: Wilderness Area	1	0	1
II: National Park	27	0	27
III: National Monument or Feature	7	0	7
IV: Habitat/ Species Management Area	21	0	21
V: Protected Landscape / Seascape	2	0	2
VI: Protected Area with Sustainable Use of Natural Resources	23	0	23
Not Assigned	0	0	0
Not Reported	13	0	13
<b>Total number of records in the WDPA for Honduras</b>			
	111	8	119

## WDPA Quality Indicators for Honduras

### **The percentage of records with boundaries in polygon format**

The WDPA stores all records with spatial (location) data. These data can be polygons which represent the boundaries of the protected area, or a single latitude/longitude point which shows the general location of the protected area. This indicator shows the percentage of records with boundaries - the preferred spatial data.



### **The percentage of data attributes which have been reported by the data provider**

Each record in the WDPA has 25 fields for which data attributes are requested. This indicator shows the weighted percentage of data fields which have been reported, based on the minimum, core and complete attributes. *Due to a change in the calculation of this quality indicator, values pre-2015 and post-2015 are not directly comparable.*



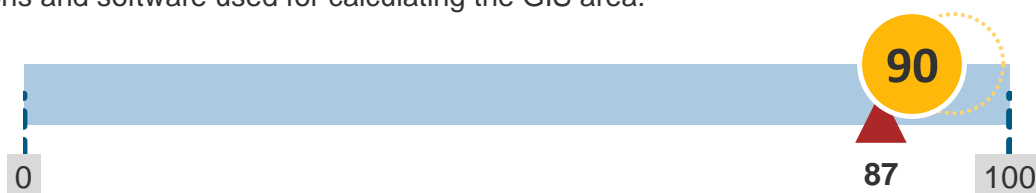
### **The percentage of records updated or validated by the data provider in the last 5 years**

UNEP-WCMC sets a target to update each record in the WDPA at least every five years. This indicator shows the percentage of records updated in the last 5 years (since January 2015).



### **The percentage of records where the area of the polygon is within 5% of the area reported**

The area (km<sup>2</sup>) reported for a protected area may sometimes differ from the calculated GIS area of the boundary polygon provided, possibly indicating a discrepancy within the information submitted. This indicator shows the percentage of records where the area of the polygon is within a threshold of 5% of the area reported. The threshold allows for differences due to projections and software used for calculating the GIS area.



The range of scores for individual countries in the WDPA

Country score for Honduras in March 2020 (solid circle) and July 2019 (dotted circle)

Overall score for the WDPA