

# The Science Based Targets Network and SBTs for Nature

**Dr Katie Leach**

**Senior Programme Officer, Business & Biodiversity Programme  
UNEP-WCMC**

# Global Biodiversity Agenda

---

A series of webinars for Proteus Partners sharing information and insights into the latest trends and developments in biodiversity and ecosystem services policy, initiatives, data and tools.

---



# Logistics

---

- **Scheduling:** AM & PM sessions
  - **Rules:** Chatham House rule for discussion, but presentation is recorded
  - **Topics:** Your suggestions are welcome
- 



# UNEP-WCMC

---

UNEP-WCMC is a global Centre of excellence on biodiversity. The Centre operates as a collaboration between the UN Environment Programme and the UK-registered charity WCMC. Together we are confronting the global crisis facing nature.

---



proteus

---

A collaboration to make available  
global information on biodiversity

Partnership with 13 extractive  
industry members

[www.proteuspartners.org](http://www.proteuspartners.org)

---



**BHP**



**ExxonMobil**

**Newmont**<sup>™</sup>



**RioTinto**



# The Science Based Targets Network and SBTs for Nature

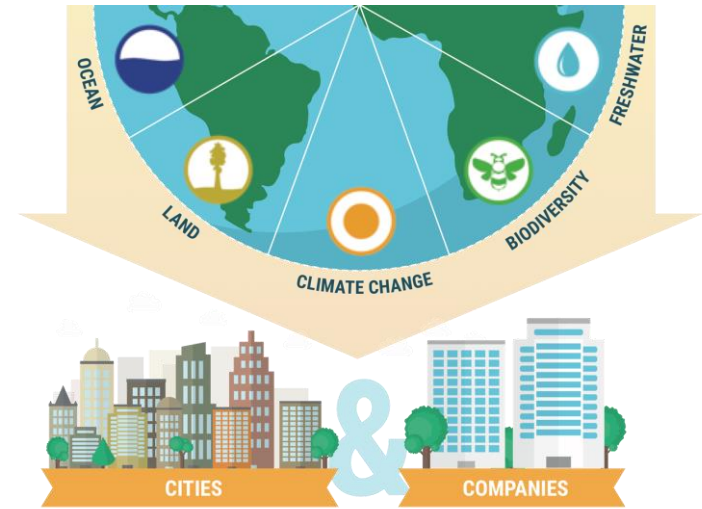
- What is the Science Based Targets Network?
- What is the current thinking around Science Based Targets for Nature?
- Updates on progress with the Interim Guidance for companies and cities
- Getting involved and next steps



# What is the Science Based Targets Network?

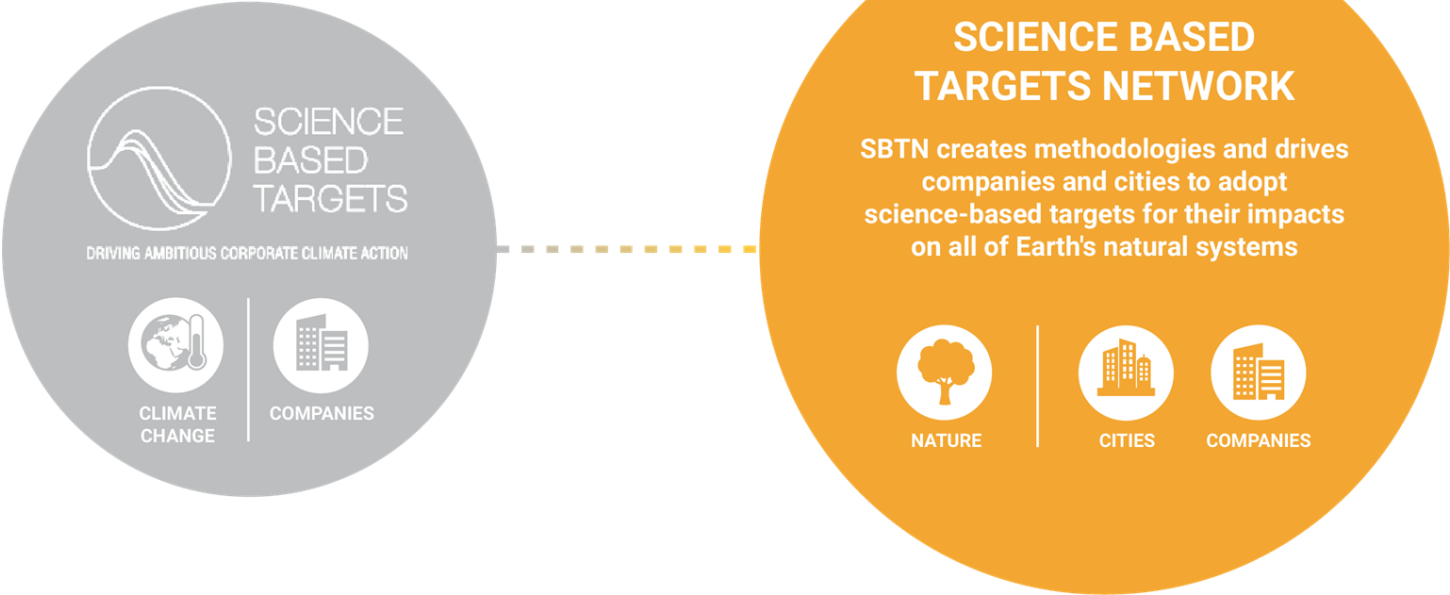
# What is the Science Based Targets Network?

- Aims to transform the use of natural resources while decarbonising the economy
- Recognises the role of cities and companies to achieve this
- Creates methodologies and drives adoption for city and company level targets
- Part of the Global Commons Alliance



Within Earth's limits

# The Science Based Targets Initiative and the Science Based Targets Network



SCIENCE  
BASED  
TARGETS

DRIVING AMBITIOUS CORPORATE CLIMATE ACTION



CLIMATE  
CHANGE



COMPANIES

## SCIENCE BASED TARGETS NETWORK

SBTN creates methodologies and drives companies and cities to adopt science-based targets for their impacts on all of Earth's natural systems



NATURE



CITIES



COMPANIES

# Partner Organisations



# Earth Commission

---

Provides a synthesis of the latest science to underpin the setting of science-based targets for a stable and resilient planet to support thriving societies

---



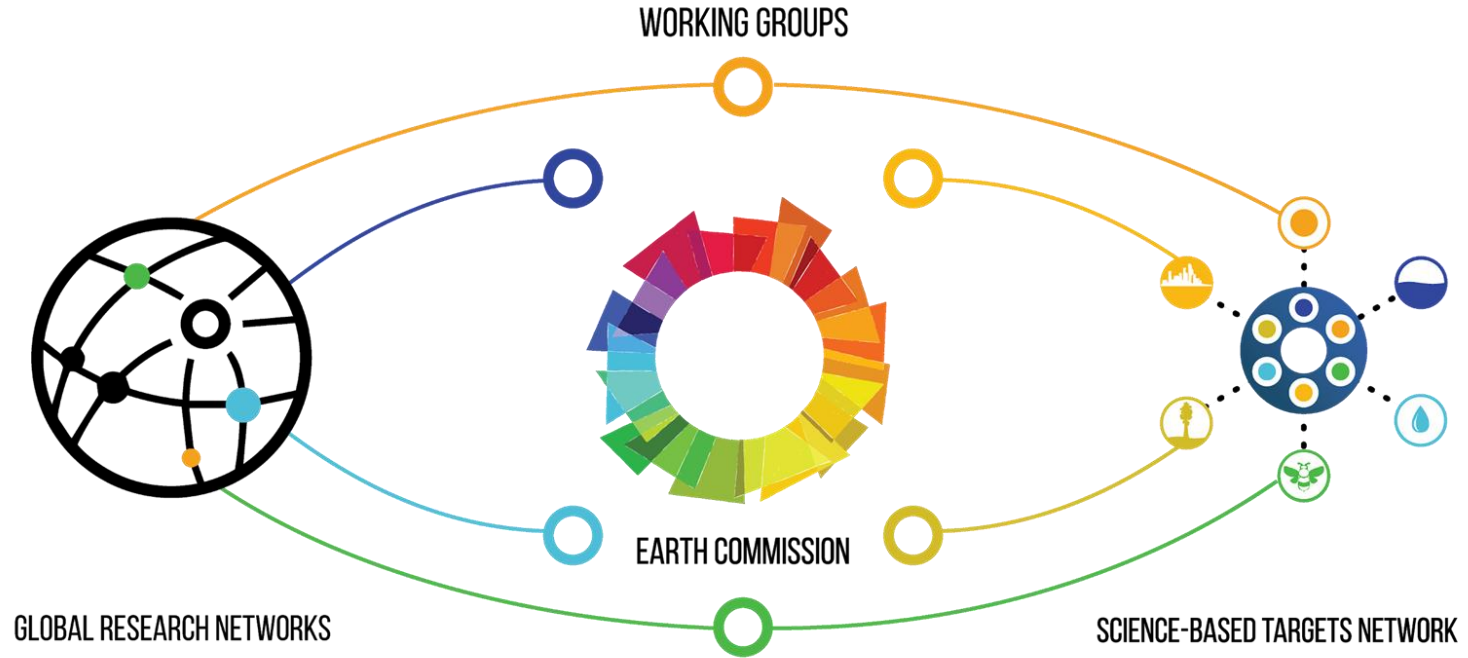
# Earth Commission



## 3 Year Outcomes

- An integrated framework for people and planet
- Major peer-reviewed scientific assessment report to underpin the setting of science-based targets in policy, cities and businesses
- Series of scientific publications from working groups will be complemented by articles and editorials in the broader media
- Growing recognition and use of the scientific concept of a safe and just corridor for humanity to underpin science-based targets for the global commons

# Earth Commission and the Science Based Targets Network



# What are Science Based Targets? (DRAFT)

## SCIENCE-BASED TARGET:

Voluntary, measurable, and actionable targets aligned with biophysical limits (*safe*) and societal sustainability goals (*just*)

### SCIENCE

*Biophysical limits and 'Societal sustainability goals'* -- a set of higher level sustainability goals / targets defined by a combination of environmental science and societal risk tolerance, at the relevant level of governance

### BASED

*'Aligned with'* -- the ambition of the target at actor level is aligned with the ambition of the underlying societal goal/target

### TARGETS

*'Voluntary, measurable, and actionable targets'*-- actors must be able to measure a baseline, take action, and track progress with a reasonable level of effort



# Why set Science Based Targets?

---

- Reduce impacts to stay within planetary boundaries
  - Drive innovation
  - Meet current and future stakeholder expectations
  - Improve profitability, efficiencies and competitiveness
- 



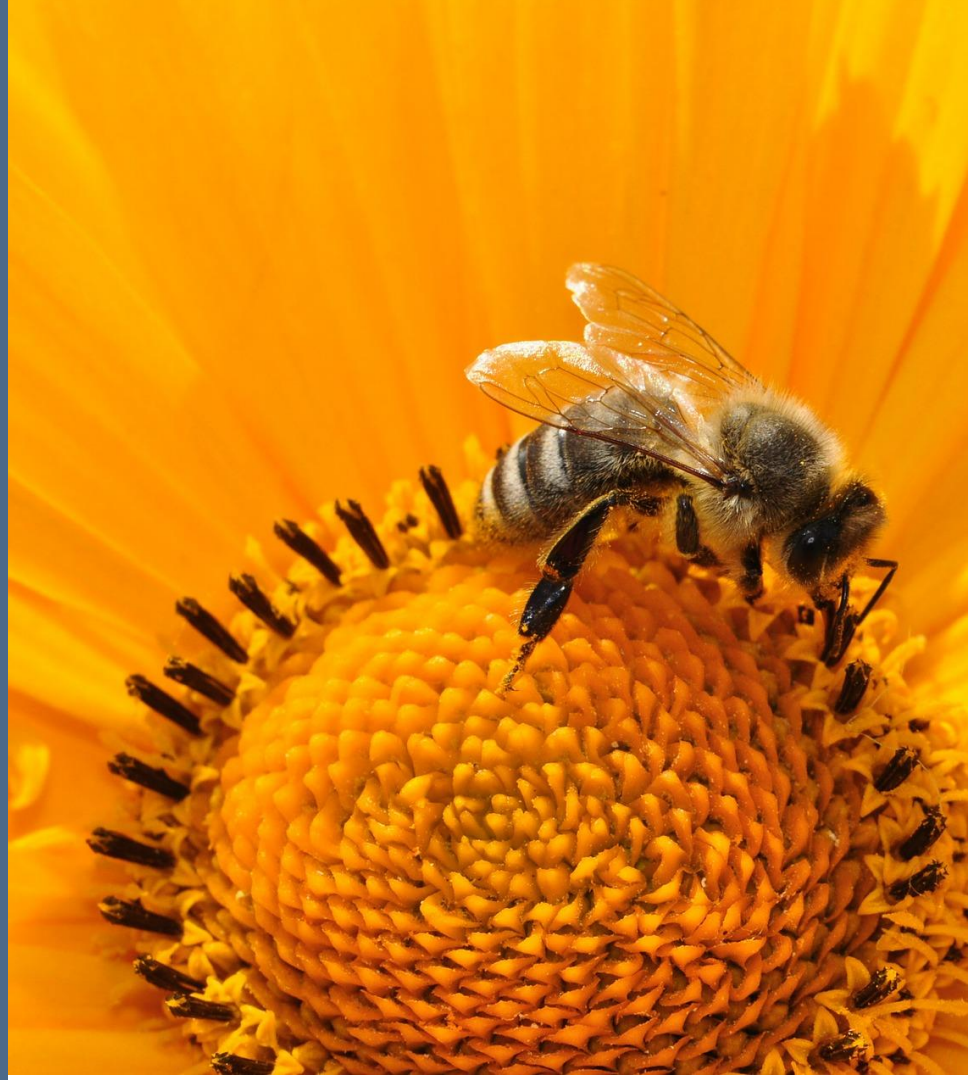
**What is the current  
thinking around Science  
Based Targets for Nature?**

# A Science Based Target for Nature

---

What is the equivalent of 1.5°C for nature?

---



# What could SBTs for Nature look like?

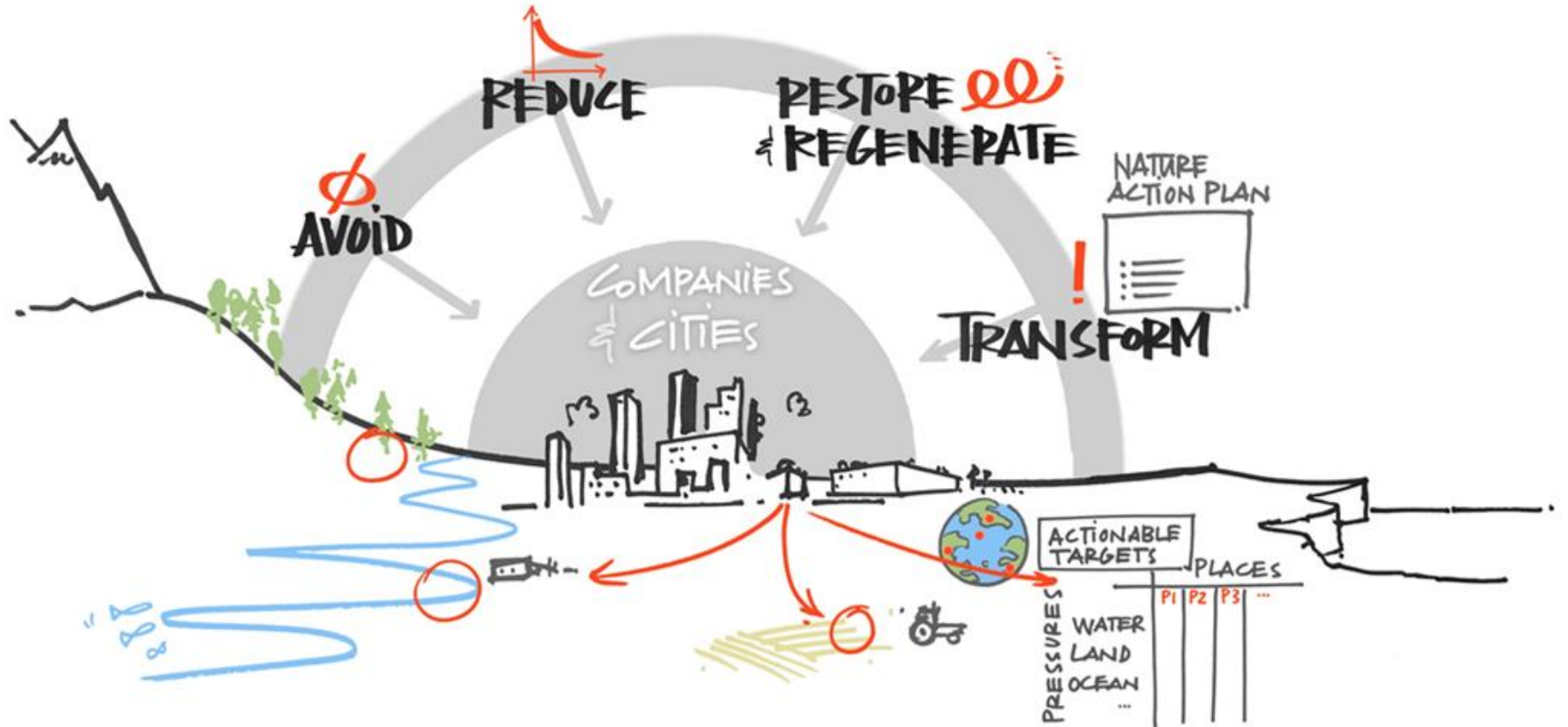
---

Draft goals:

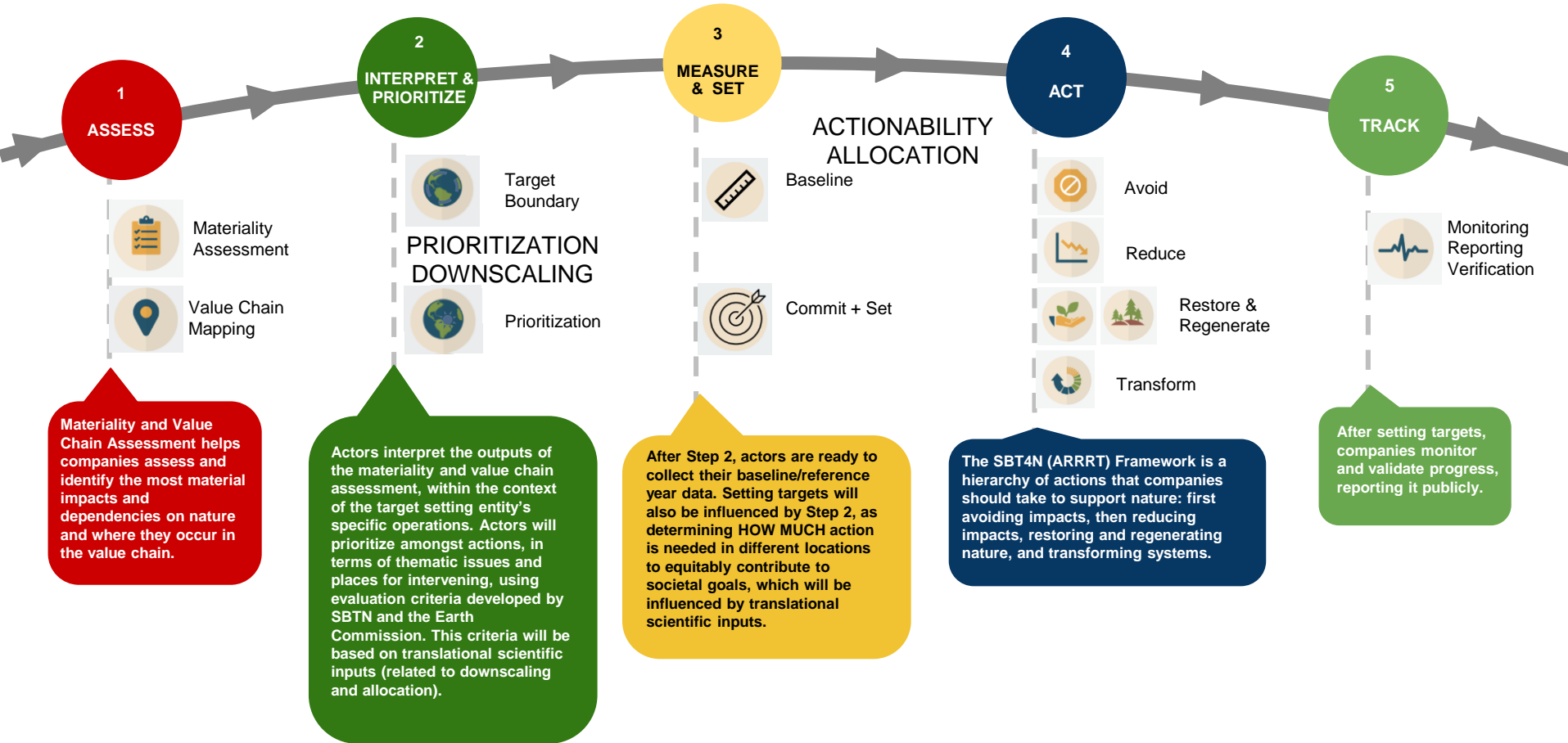
- Net zero loss of nature from 2020
  - Net positive by 2030
  - Full recovery by 2050
- 



# High level framework for setting SBT for Nature



# Steps to setting and achieving SBTs for Nature



# What is 'aligned with (science-based)'?

---

**Translation** (in the context of setting SBTs):

*'the process of aligning actors such as companies and cities with societal goals'*

---



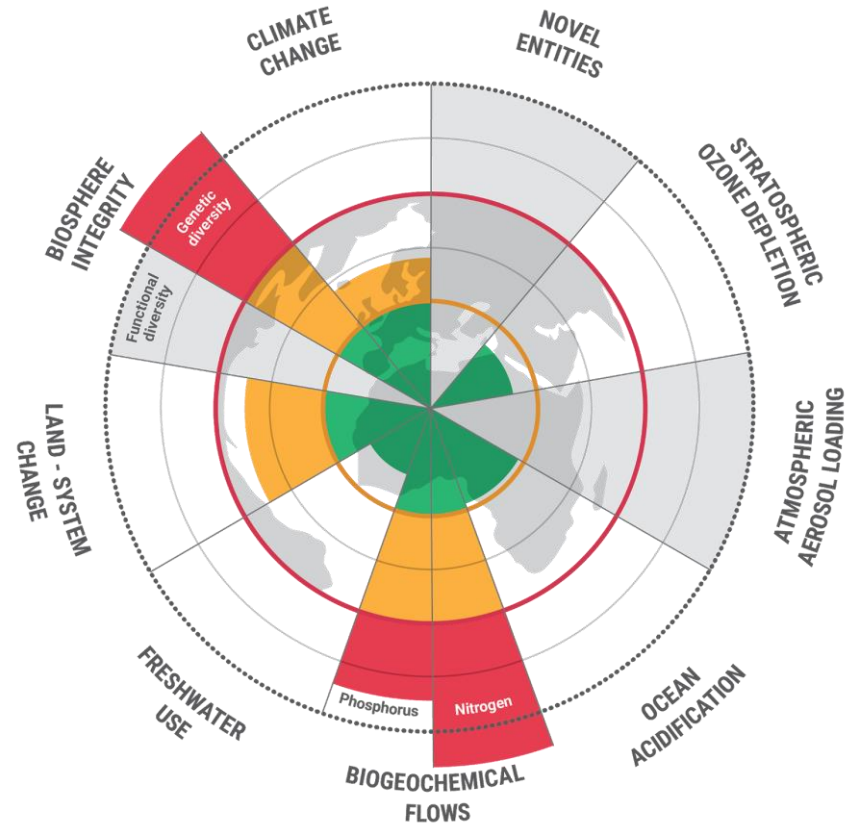
# Key elements of translation

---

## Downscaling:

A scientific process of approximating the [ecoregional] equivalents of planetary boundaries

---



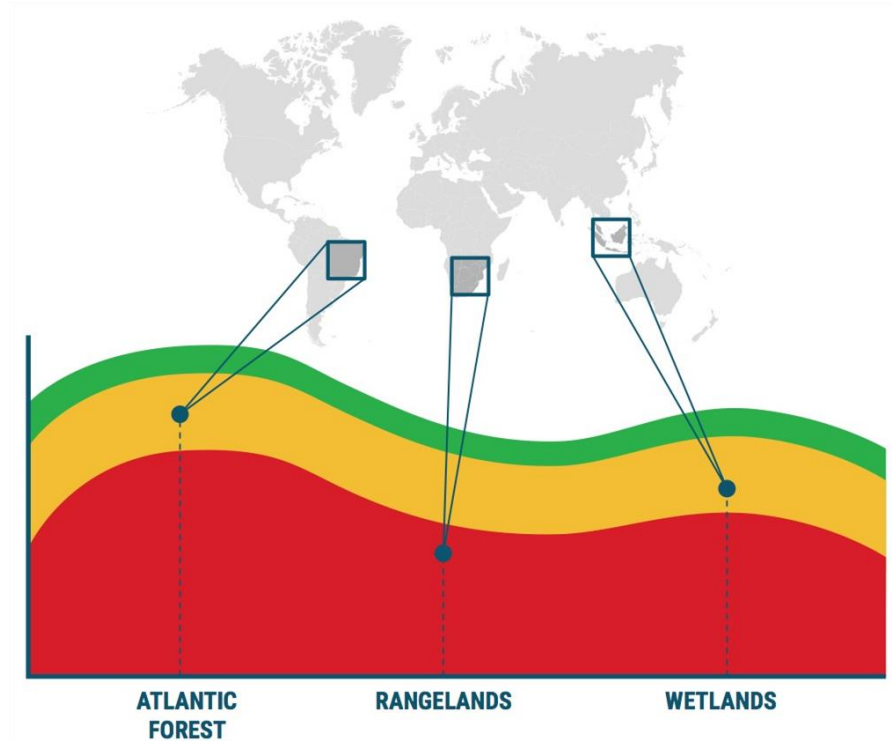
# Key elements of translation

---

## Prioritization:

Where areas of critical importance to biodiversity (in terms of species, integrity, function) are identified across the globe

---



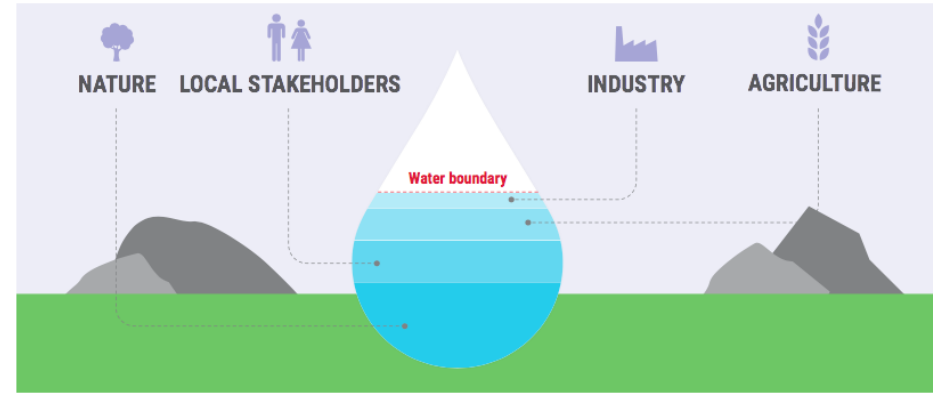
# Key elements of translation

---

## Allocation:

Whereby the appropriate level of ambition/actor-specific contribution is determined

---



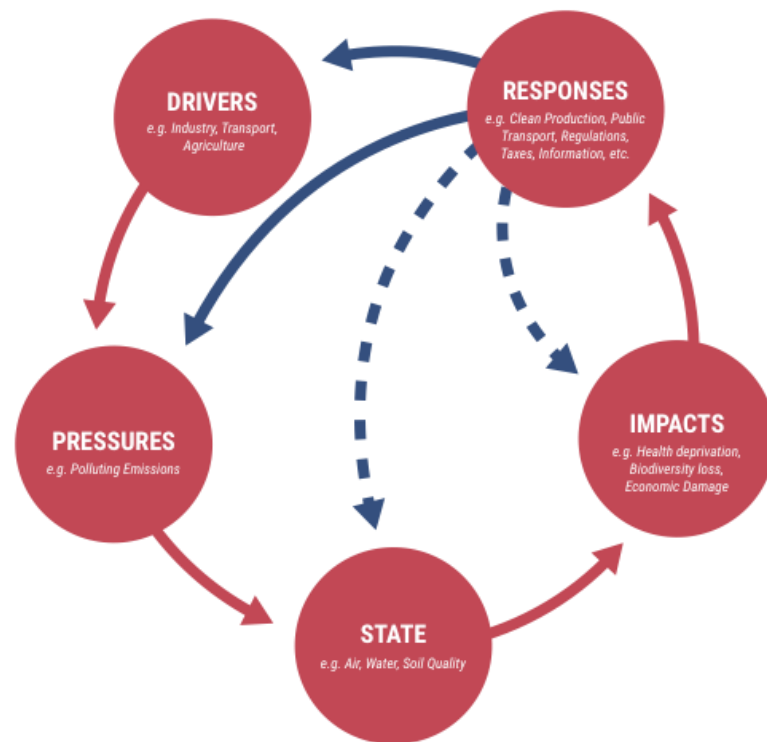
# Key elements of translation

---

## Actionability:

Where boundaries/goals are converted to indicators and targets that are practical to measure/implement

---



# Updates on progress with the Interim Guidance for companies and cities

# Purpose

---

To enable companies and cities to set SBTs for Nature, to operationalize global nature goal(s) and do their part to stop the loss of nature.

---



# Interim guidance at a glance

## **WHY** SBTs for nature?

- Global goals for climate and nature, role of companies and cities
- State of nature and its contributions to people
- What's at stake for business

## **WHAT** are SBTs for nature?

- Overview of key concepts and principles of SBTs
- How companies can begin to take action

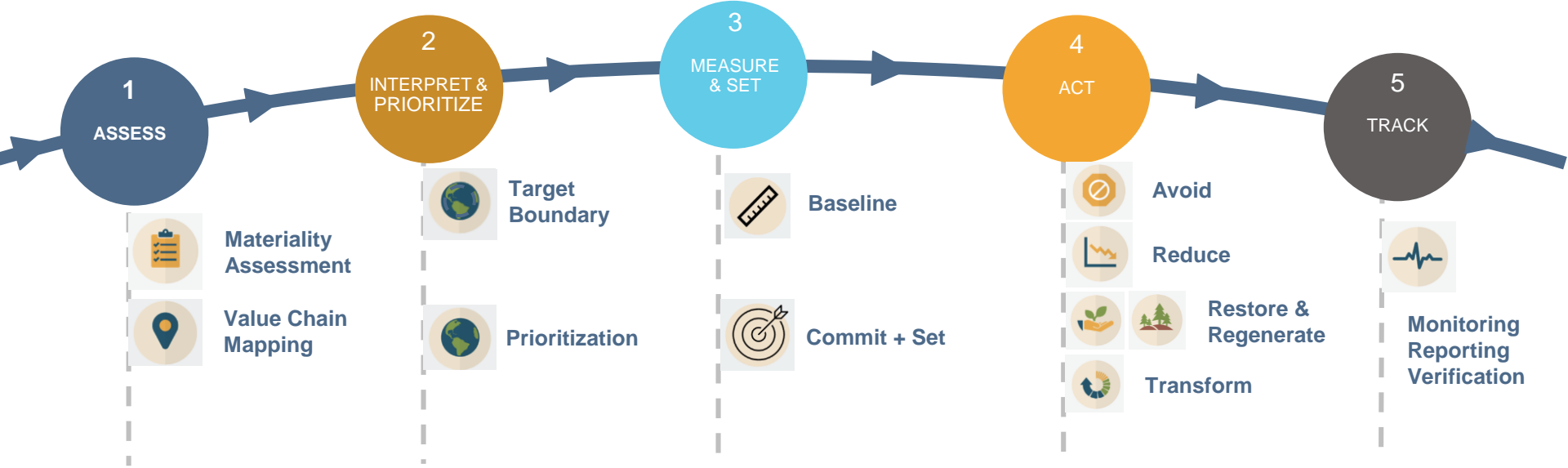
## **HOW** to set SBTs and act for nature: A (interim) step-by-step guide

- 5-step guide
- Illustrative example

## **WHEN** will I be able to set SBTs for nature?

- What can I do today, and tomorrow?

# Five steps to setting SBTs for Nature



# After reading SBTN's 2020 guidance, how ready can a company expect to be?

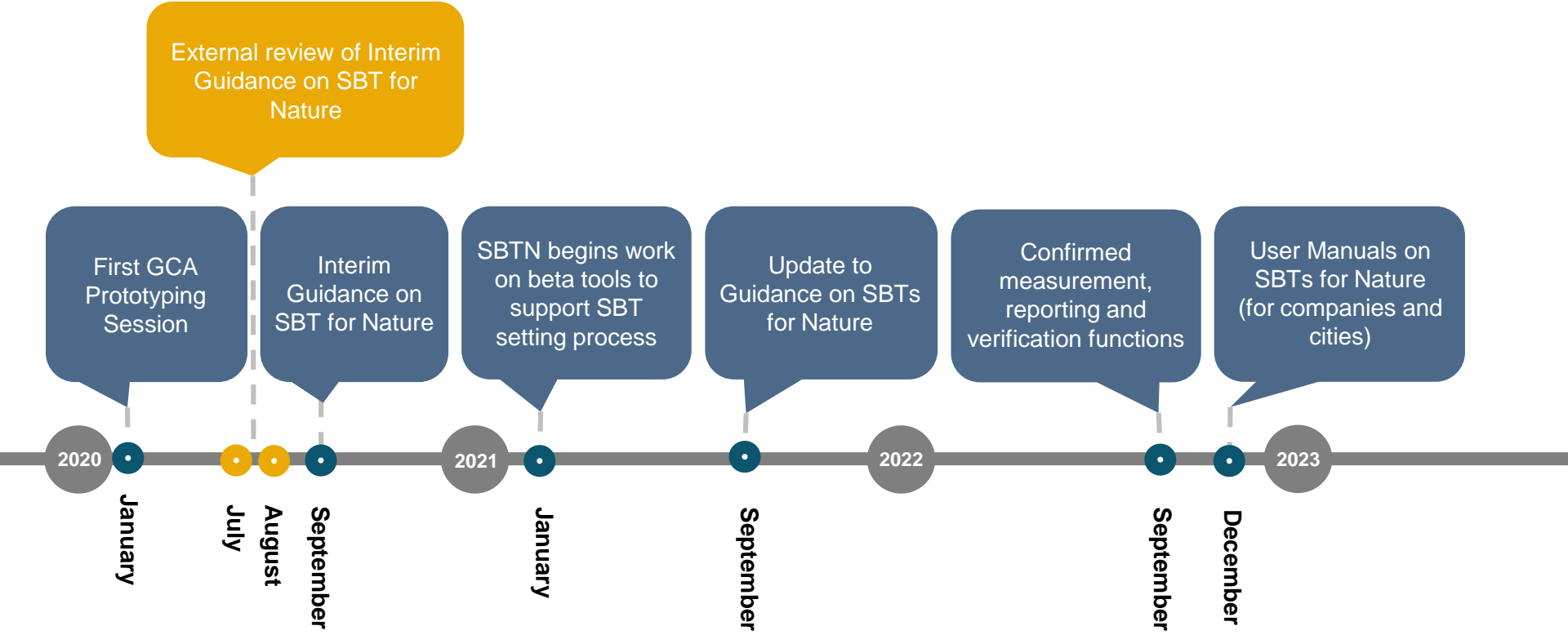
Step	What SBTN is providing	What companies will be able to do
<b>1. Assess</b>	<ul style="list-style-type: none"><li>• Preliminary decision tree and tools for completing materiality and value chain mapping</li></ul>	<ul style="list-style-type: none"><li>• Conduct hotspot assessment of value chain</li><li>• Gather spatial data for high impact features of your operations (facilities or inputs)</li></ul>
<b>2. Interpret &amp; Prioritise</b>	<ul style="list-style-type: none"><li>• Preliminary guidance and criteria for prioritization</li></ul>	<ul style="list-style-type: none"><li>• Begin prioritizing locations for action and value chain partners for collaboration</li><li>• Begin mapping stakeholders in key areas</li></ul>
<b>3. Measure Baseline &amp; Set Targets</b>	<ul style="list-style-type: none"><li>• Initial proposed impact areas and indicator framework</li></ul>	<ul style="list-style-type: none"><li>• Measure baselines for well-established indicators</li><li>• Pilot emerging indicators and measurement techniques</li><li>• Set SBTs for climate</li></ul>

# After reading SBTN's 2020 guidance, how ready can a company expect to be?

Step	What SBTN is providing	What companies will be able to do
<b>4. Take Action</b>	<ul style="list-style-type: none"><li>• SBT for Nature action framework (AR<sup>3</sup>T)</li><li>• Guidance on types of action that can be taken according to the framework (AR<sup>3</sup>T)</li></ul>	<ul style="list-style-type: none"><li>• Commit to high level corporate vision</li><li>• Begin action planning</li><li>• Take 'no regrets' actions</li><li>• Take action in line with your SBTs for climate</li></ul>
<b>5. Track Progress</b>	<ul style="list-style-type: none"><li>• Initial guidance on types of monitoring and potential reporting options</li></ul>	<ul style="list-style-type: none"><li>• Disclose results of materiality and value chain assessment through your own reporting</li><li>• Disclose baseline data for targets through your own reporting</li><li>• Begin trialing monitoring methods</li></ul>

# Getting involved and next steps

# Timeline and next steps



# What companies can do now

---

- Engage with SBTN to develop and finalise methods
  - Begin gathering data
  - Where available, measure and set targets
  - Take 'no regrets actions' for nature
- 



# Discussion

# Thank you

[unep-wcmc.org](http://unep-wcmc.org)

Facebook: @unepwcmc  
Twitter: @unepwcmc  
Linkedin: UNEP-WCMC  
Youtube: UNEP-WCMC Communications

# Credits and Selected Links

---

Moorhen © UNEP-WCMC Stephanie Foote

Bee orchid © UNEP-WCMC Stephanie Foote

UNEP-WCMC Office in Cambridge © UNEP-WCMC

---

Business for Nature

<https://www.businessfornature.org/>

Earth Commission

<https://earthcommission.org/>

Global Commons Alliance

<http://globalcommonsalliance.org/>

Science Based Targets Network

<http://sciencebasedtargetsnetwork.org/>

Science Based Targets initiative

<https://sciencebasedtargets.org/>

**UN**   
**environment  
programme**

**WCMC**