

WDPA Data Status Report

Switzerland

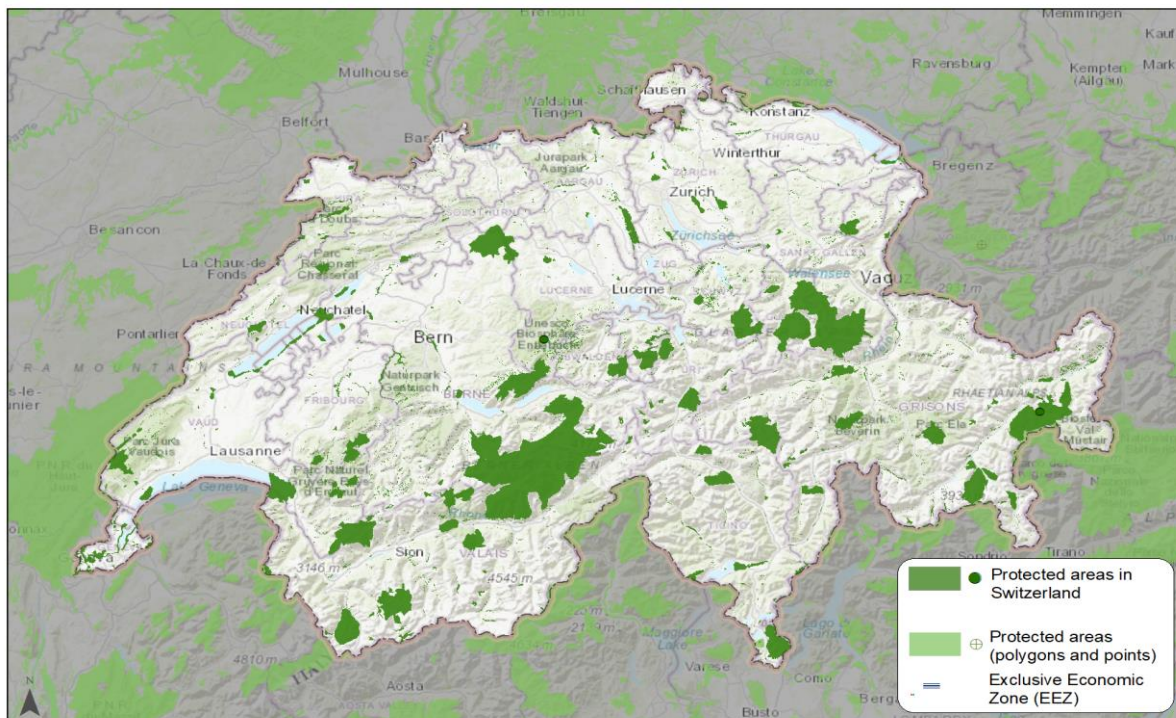
March 2020

About this Report and the World Database on Protected Areas (WDPA)

The WDPA is the most comprehensive global dataset on terrestrial and marine protected areas, incorporating the official UN List of Protected Areas. The WDPA dataset is not necessarily a complete representation of all the protected areas which have been designated in country. The quality of the WDPA depends on the accessibility of accurate, comprehensive, up-to-date protected areas information from data holders.

This report describes the current status of data in the WDPA for all sites included in the March 2020 monthly release for Switzerland. The WDPA is updated each month, and the information in this factsheet may have been superseded by a more recent update.

Map showing protected areas in the WDPA



The boundaries and names shown and the designations used on maps do not imply official endorsement or acceptance by the UN Environment Programme or contributory organisations. Boundaries for Exclusive Economic Zones (EEZs) may be partially displayed where protected area records are not present throughout the whole EEZ. EEZs are not displayed where countries are landlocked.

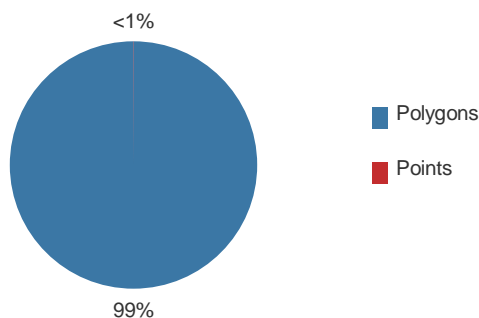
Protected areas data in the WDPA for Switzerland

There are 6,847 protected area records stored in the WDPA for Switzerland, 6,832 are national-level protected areas with 15 designated under international and regional agreements or conventions.

>99% of the data have boundaries in polygon format, <1% of the records are depicted in point format (i.e. a single latitude and longitude point for the protected area). See Figure 1.

Of the 6,847 protected areas, none contain a marine a component.

Figure 1: Ratio of points to polygons

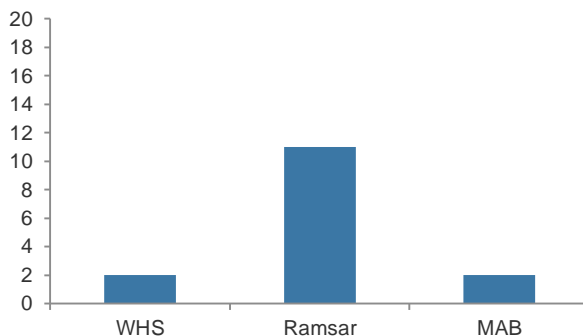


Data for protected areas designated under international and regional conventions and agreements

There are 15 protected areas in the WDPA designated under international or regional conventions or agreements.

2 are World Heritage Sites (WHS); 11 are Ramsar Wetlands of International Importance; 2 are UNESCO Man and the Biosphere Reserves (MAB). See Figure 2.

Figure 2: Number of WHS, Ramsar and MAB sites

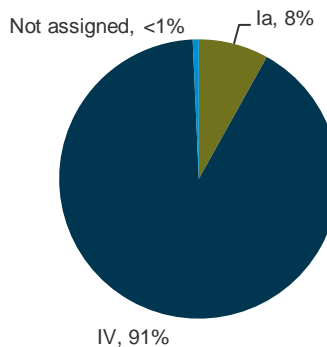


Data for national-level protected areas

There are 6,832 national-level protected area records in the WDPA. IUCN Management Categories have been reported for 6,784 of these records. The remaining 48 features are recorded as Not Assigned.

Figure 3 shows the allocation of IUCN Management Categories across national-level protected area records in the WDPA (numbers of sites in each category are shown in Table 2 at the end of this report).

Figure 3: National-level protected areas by IUCN Management Category



Completeness of WDPA Data Attributes for Switzerland

The WDPA requires that a minimum set of information is provided with each protected area record. These data attributes are defined in the WDPA User Manual.

Table 1 shows the extent to which key attributes have been reported by data providers for all protected area records in the WDPA for Switzerland.

Table 1: Completeness of selected attributes

Attribute	Completeness
IUCN Category	100%
Status (designated or proposed)	100%
Status Year	100%
Governance Type	100%
Management Authority	100%
Link to Management Plan	0%

The WDPA User Manual 1.6 can be viewed at http://wcmc.io/WDPA_Manual.

Data sources in the WDPA for Switzerland

All data in the WDPA have been obtained or validated from a single source for Switzerland.

Figure 4 shows the breakdown of when protected area records in the WDPA were last updated or validated.

Data for protected areas designated under international agreements and conventions have been sourced from the relevant convention secretariat. This includes: UNESCO World Heritage Centre, Ramsar Convention Secretariat and UNESCO Man and The Biosphere Programme.

Data for national-level protected areas in the WDPA have been sourced from national authorities wherever possible. Information may also be supplemented by data from other agencies or organisations working in each country. As part of the update process for national data, national authorities are given the opportunity to review, validate and, where necessary, edit all existing WDPA records for their country. All updates to the WDPA by national authorities take priority over other sources and are considered to be the authoritative version.

All records in the WDPA have a reported source for Switzerland.

National-level data in Switzerland are provided by one source: European Environment Agency (EEA).

Figure 4: Percentage of records updated or validated by year

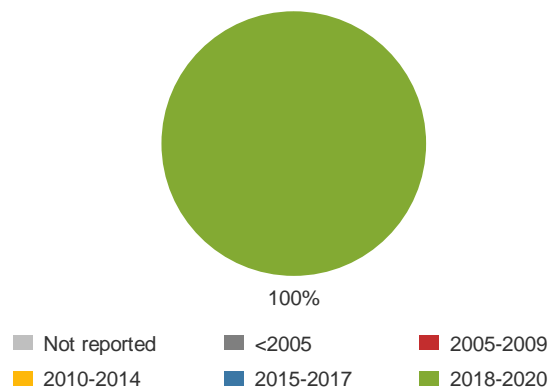


Table 2: WDPA Data for Switzerland (as of March 2020)

For more information on the categories below please refer to the Biodiversity A-Z, www.biodiversitya-z.org

	Polygons	Points	Total
Realm: terrestrial or marine			
Terrestrial	6,845	2	6,847
Coastal	0	0	0
Marine	0	0	0
Status: designated or proposed			
Designated	6,843	2	6,845
Established	0	0	0
Proposed	0	0	0
Status not reported	0	0	0
Areas designated under international conventions and agreements			
	13	2	15
UNESCO World Heritage Sites (natural / mixed)	2	0	2
Wetlands of International Importance (Ramsar sites)	11	0	11
UNESCO Man and Biosphere Reserves	0	2	2
Areas designated under regional conventions and agreements			
	0	0	0
Baltic Sea Protected Area (HELCOM)	0	0	0
Marine Protected Area (CCAMLR)	0	0	0
Marine Protected Area (OSPAR)	0	0	0
Site of Community Importance (Habitats Directive)	0	0	0
Special Protection Area (Birds Directive)	0	0	0
Specially Protected Area (Cartagena Convention)	0	0	0
Specially Protected Area of Mediterranean Importance (Barcelona Conv.)	0	0	0
National-level Protected Areas: IUCN Management Category			
	6,832	0	6,832
Ia: Strict Nature Reserve	553	0	553
Ib: Wilderness Area	0	0	0
II: National Park	0	0	0
III: National Monument or Feature	0	0	0
IV: Habitat/ Species Management Area	6,231	0	6,231
V: Protected Landscape / Seascape	0	0	0
VI: Protected Area with Sustainable Use of Natural Resources	0	0	0
Not Assigned	48	0	48
Not Reported	0	0	0
Total number of records in the WDPA for Switzerland			
	6,845	2	6,847

WDPA Quality Indicators for Switzerland

The percentage of records with boundaries in polygon format

The WDPA stores all records with spatial (location) data. These data can be polygons which represent the boundaries of the protected area, or a single latitude/longitude point which shows the general location of the protected area. This indicator shows the percentage of records with boundaries - the preferred spatial data.



The percentage of data attributes which have been reported by the data provider

Each record in the WDPA has 25 fields for which data attributes are requested. This indicator shows the weighted percentage of data fields which have been reported, based on the minimum, core and complete attributes. *Due to a change in the calculation of this quality indicator, values pre-2015 and post-2015 are not directly comparable.*



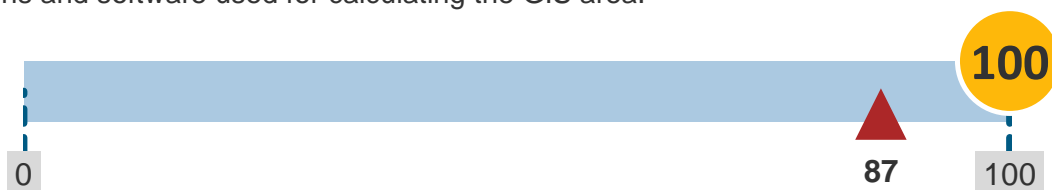
The percentage of records updated or validated by the data provider in the last 5 years

UNEP-WCMC sets a target to update each record in the WDPA at least every five years. This indicator shows the percentage of records updated in the last 5 years (since January 2015).



The percentage of records where the area of the polygon is within 5% of the area reported

The area (km²) reported for a protected area may sometimes differ from the calculated GIS area of the boundary polygon provided, possibly indicating a discrepancy within the information submitted. This indicator shows the percentage of records where the area of the polygon is within a threshold of 5% of the area reported. The threshold allows for differences due to projections and software used for calculating the GIS area.



0 100 The range of scores for individual countries in the WDPA



Country score for Switzerland in March 2020 (solid circle) and July 2019 (dotted circle)



Overall score for the WDPA