

# Proteus 2017: Highlights

## Annual report

Major achievements of the year,  
and links to key resources.

New data  
resources

New  
knowledge  
resources

Partnership  
impact

Business and  
Biodiversity  
engagement

Further  
information



# New biodiversity data resources



## World Database on Protected Areas (WDPA)

106 countries and territories updated

86% of records updated or validated

Net increase of 4,030 records

Version 1.5 of the WDPA User Manual available in Russian

Access User Manual [here](#).

## Ocean+

## Marine and coastal data

Ocean+ is the new initiative for marine and coastal data

New marine and coastal habitat data catalogue: Ocean+ Data

Standardized attributes within five core habitat datasets

New data layer: Global distribution of spatial planning in the marine environment

Access Ocean+ Data [here](#).  
Access Data Pack [here](#).



## Integrated Biodiversity Assessment Tool (IBAT)

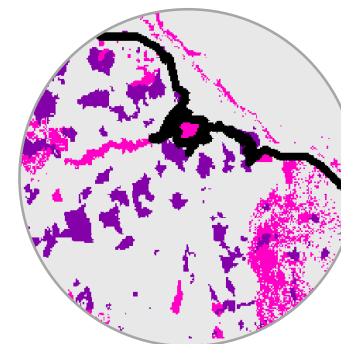
Two core datasets updated:

Protected areas (January 2018 release)

IUCN Red List (Version 2017-3)

Implementation of new workflow, enabling monthly updates of the WDPA

Access IBAT for Business [here](#).



## IFC PS6 Critical Habitat

Release of new Global Critical Habitat Screening Layer

Accompanied by information on trigger features, detailed metadata, and Briefing Note

New justification documents aligning [EBSA](#) and [VME](#) criteria with Critical Habitat

Access Data Pack [here](#)  
(includes justification documents)  
Access Technical Briefing Note [here](#)



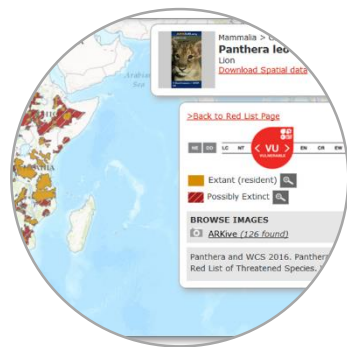
# New biodiversity knowledge resources



## Technical Briefing Notes

- Satellite remote sensing data for biodiversity management
- Species' responses to climate change
- Biodiversity Beyond National Jurisdiction: Emerging legally binding international tool
- Ecosystem-based Adaptation: Resilience to climate change

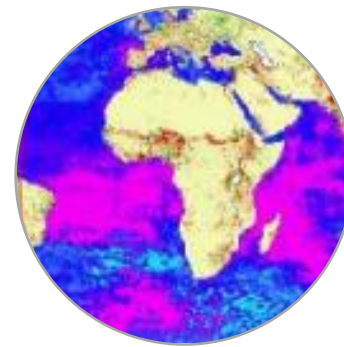
Access Technical Briefing Notes [here](#).



## Technical Community of Practice

- New virtual meeting group, to discuss practical aspects of working with Proteus data:
- Accessing data available through Proteus
  - Working with the IUCN Red List of Threatened Species
  - Working with the Global Critical Habitat Screening Layer

Access slides and recording [here](#).



## Global Biodiversity Agenda webinar series

- Mapping threats to biodiversity – putting industrial activities into perspective
- The IUCN Green List – global standard for protected and conserved areas
- Ongoing developments around natural capital

Access slides and recording [here](#).



## Biodiversity Indicators

- New report summarizing the needs and current practices for biodiversity indicators in extractive companies and scoping potential new frameworks.
- Includes review of existing sectoral, global, regional and national approaches, frameworks and indicators.

Access report [here](#).



# The Partnership's impact

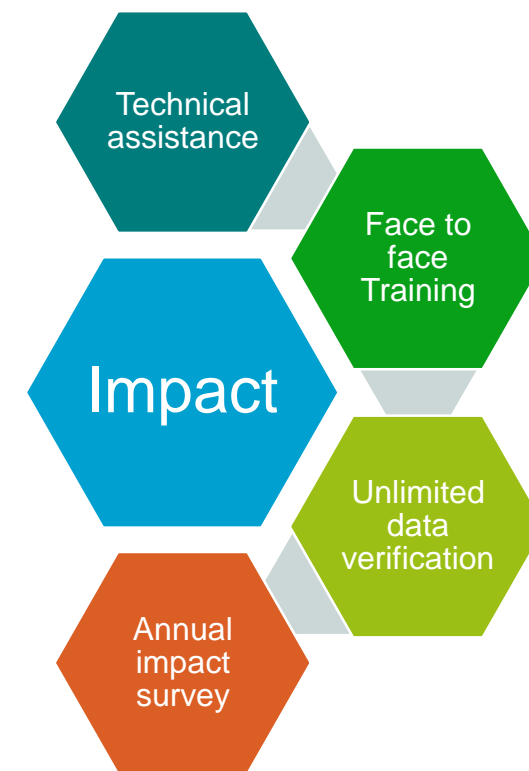
## Training and technical support

- Delivery of four customized training sessions, reaching over 53 attendees. These resulted in the development of new training materials on drivers for biodiversity conservation, and limitations of use for individual datasets.
- Completion of four technical assistance projects, including proximity analyses, assessment of country-level biodiversity data availability and support on Partner policy development.
- Partners have access to unlimited support for key datasets. The Proteus team resolved over 35 queries throughout the year, of which the majority related to the World Database on Protected Areas.

## Impact survey

- Technical users showed an increased familiarity with the Proteus Partnership in 2017 compared to 2016. Data provided through the Proteus Partnership has a substantial impact on project development decisions. Climate change and natural capital were increasing priorities for Partners in 2017.

Access impact survey report [here](#).



# The Partnership's engagement on Business & Biodiversity

## Intergovernmental Forum on Mining Annual Meeting

16-20 Oct 2017

- Hosted session on Achieving good governance for biodiversity in the mining sector

## BBOP Advisory Group Meeting

29-30 Nov 2017

- Exploring the integration of net gain approaches into natural capital accounts

## International Association for Impact Assessment Special Symposium

14-15 Nov 2017

- Identifying opportunities and needs for enhanced data sharing and capacity-building

## World Forum on Natural Capital

27-28 Nov 2017

- Discussing the integration of natural capital within finance sector risk models, and biodiversity within natural capital assessments

## UN Environment Assembly

4-6 Dec 2017

- UN Environment side event exploring linkages between pollution and climate change on biodiversity loss

## Subsidiary Body on Scientific, Technical and Technological Advice meeting

11-14 Dec 2017

- Mainstreaming biodiversity into the energy and mining sectors: Co-ordinating stakeholder input for the 14th Meeting of the Conference of the Parties (COP-14) to the Convention on Biological Diversity

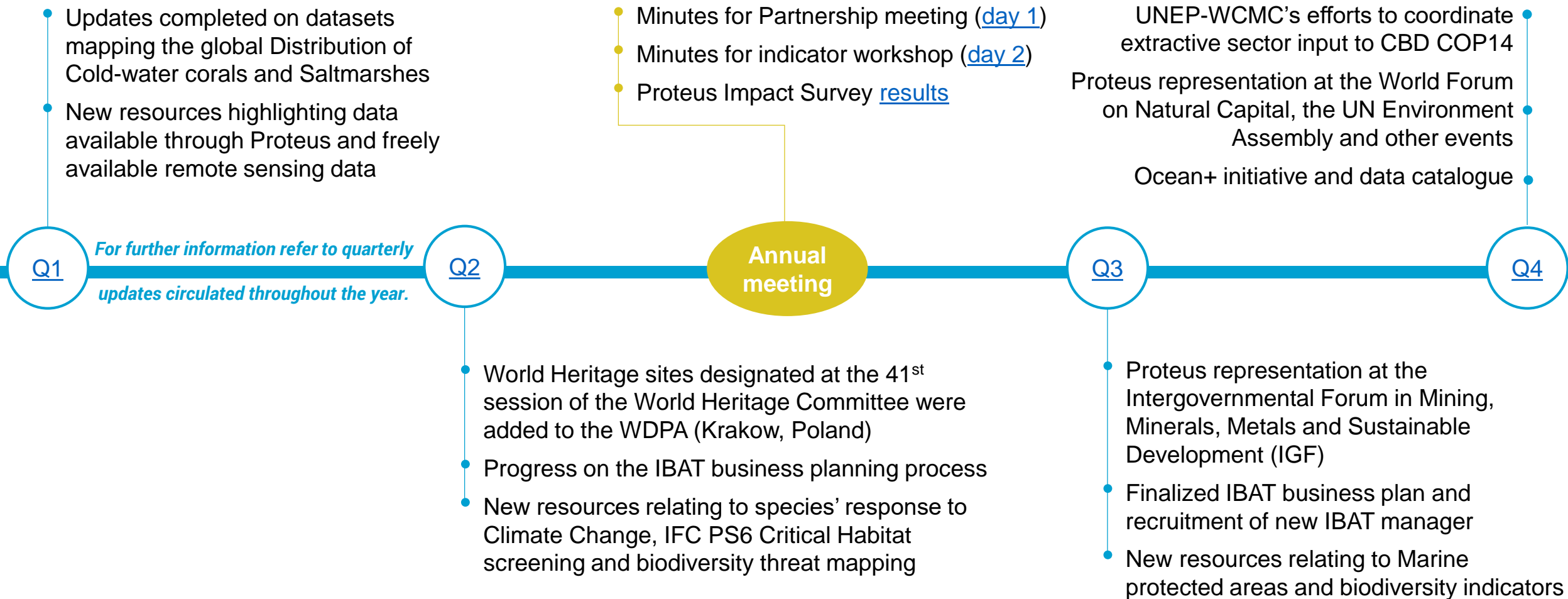
Common Themes

Mainstreaming biodiversity

Indicator development

Integrated assessments





# proteus

[www.proteuspartners.org](http://www.proteuspartners.org)

