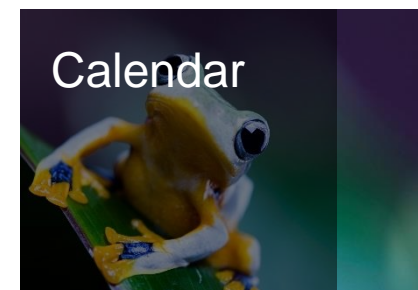
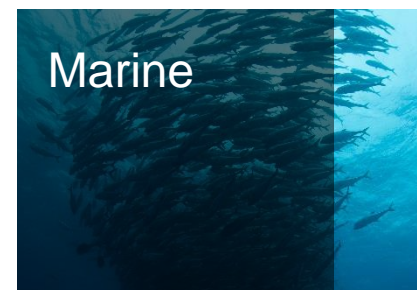
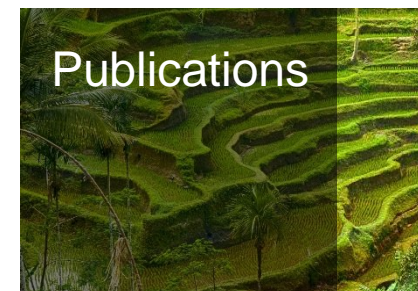
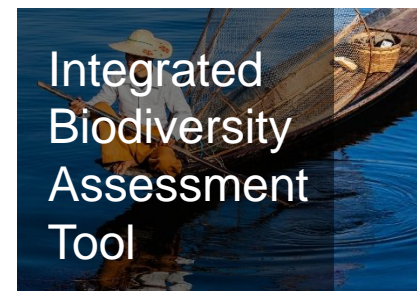
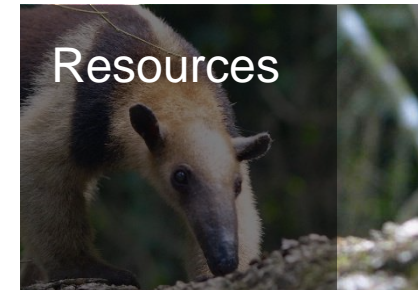
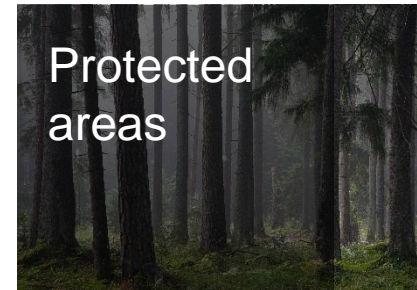


# Proteus Quarterly Update





# Highlights

Apr to Jun 2017

## 2017 Proteus Impact Survey results

### All 11 Proteus Partners completed this year's survey

- Overall, Partners were satisfied with the Partnership
- Technical/data users were more familiar with the Partnership in 2017 compared to 2016
- Data provided through the Proteus Partnership continues to have a substantial impact on project development decisions
- IBAT data and WDPA data factsheets were the most valuable Proteus resources
- Climate change and natural capital are increasing priorities for Partners in 2017

Access the survey results [here](#).

Contact: [Katie Leach](#)

Impact of data provided through the Proteus Partnership on decision-making



# Highlights

Apr to Jun 2017

## Biodiversity Indicators review

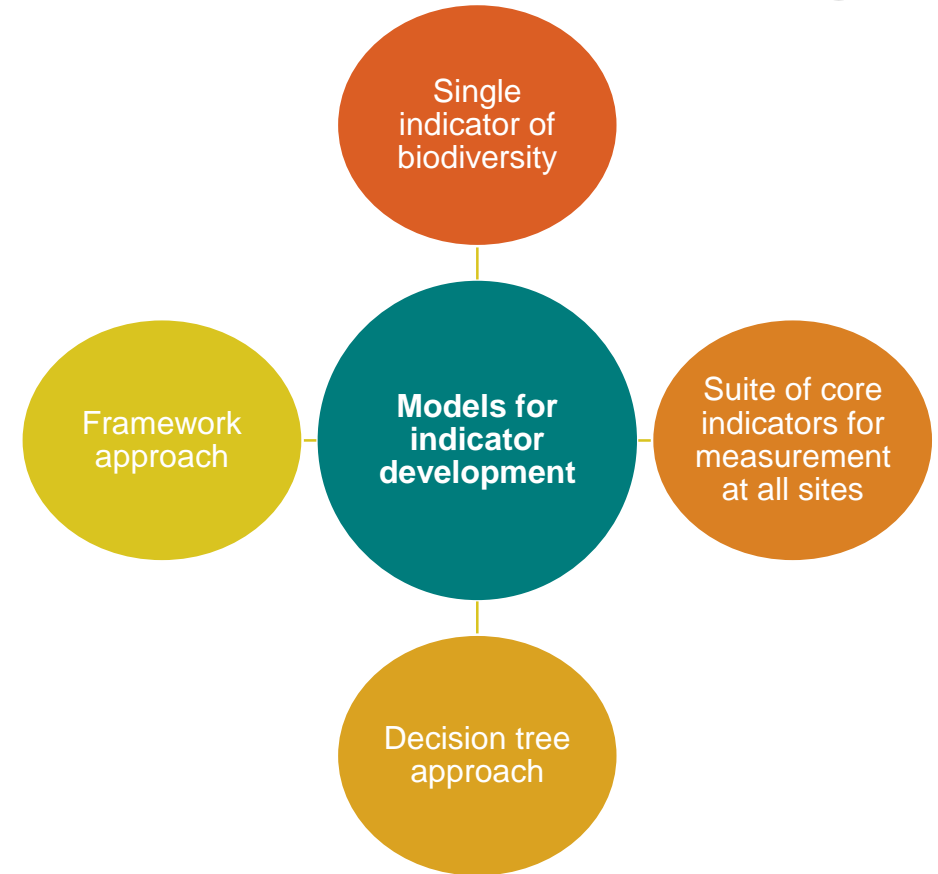
### Preliminary results available

UNEP-WCMC conducted a short scoping study, exploring the drivers, needs and current practice in relation to biodiversity indicators within the extractive sector. This work resulted in the identification of four possible 'models' for corporate-level indicator development.

A summary of the work completed to date was circulated as pre-read to the annual meeting and is being refined to be shared as a public document on the basis of discussions held during the annual meeting.

UNEP-WCMC is advancing this area of work and will continue to engage with Partners.

Access the pre-read [here](#).  
Contact: [Sarah Ivory](#)



# Protected areas

Apr to  
Jun  
2017

## New World Heritage sites

### 41<sup>st</sup> session of the World Heritage Committee July 2<sup>nd</sup>-12<sup>th</sup>, Krakow (Poland)

In its annual meetings, the Committee considers requests for the inscription of new sites on UNESCO's World Heritage List, and examines the state of conservation of sites already inscribed on the List.

A total of 21 new sites were inscribed, including 18 cultural sites and three natural sites. Additionally, extensions were approved for two natural sites.

For more information on new sites: <http://whc.unesco.org/en/newproperties/>

Spatial data on newly inscribed World Heritage sites will be integrated in the WDPA as soon as made available by the World Heritage Committee.

Contact: [Sebastian Bekker](#)



Image credits: Wikimedia Commons



# Protected areas

Apr to Jun 2017

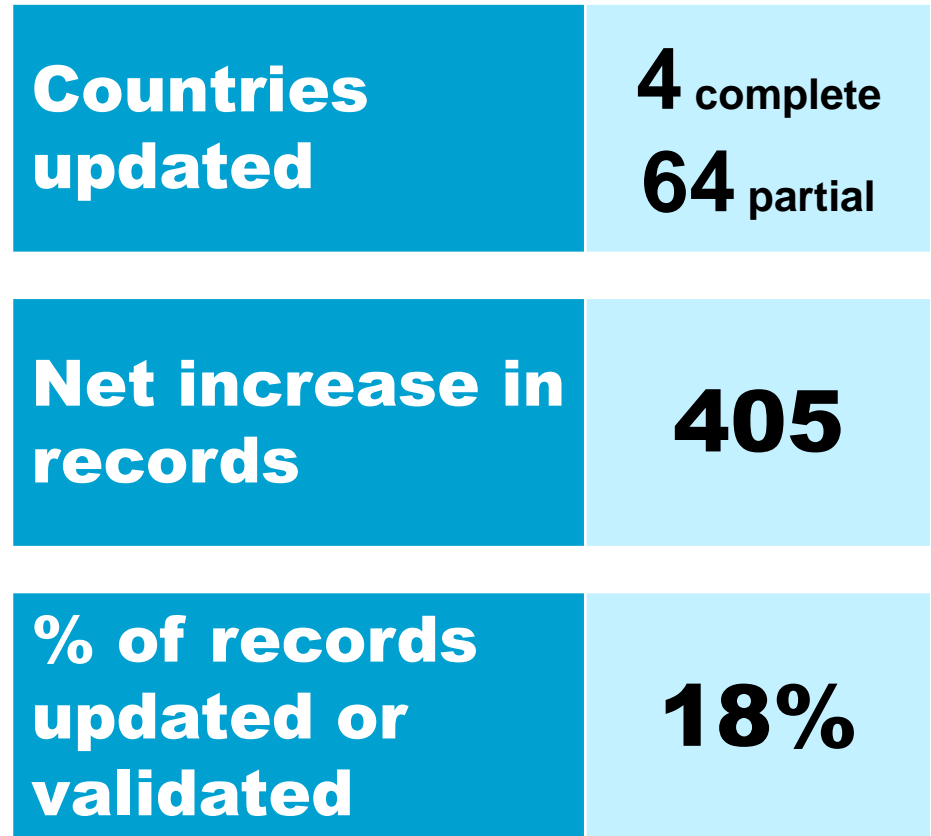
## WDPA data updates

**A total of 61% of records have been updated in the WDPA since the beginning of the year.**

Highlights this quarter:

- Complete update of the Natura 2000 Network across 28 countries
- Inclusion of the comprehensive list of 'Specially Protected Areas' designated under the Cartagena Convention
- Enhanced data flows between UNEP-WCMC, the Ramsar Secretariat and member states have resulted in partial updates of Ramsar sites across 24 countries

Contact: [Sebastian Bekker](#)



# Integrated Biodiversity Assessment Tool

Apr to  
Jun  
2017

## IBAT Business Plan Report

### An external report will inform IBAT's Business Plan from 2018-2022

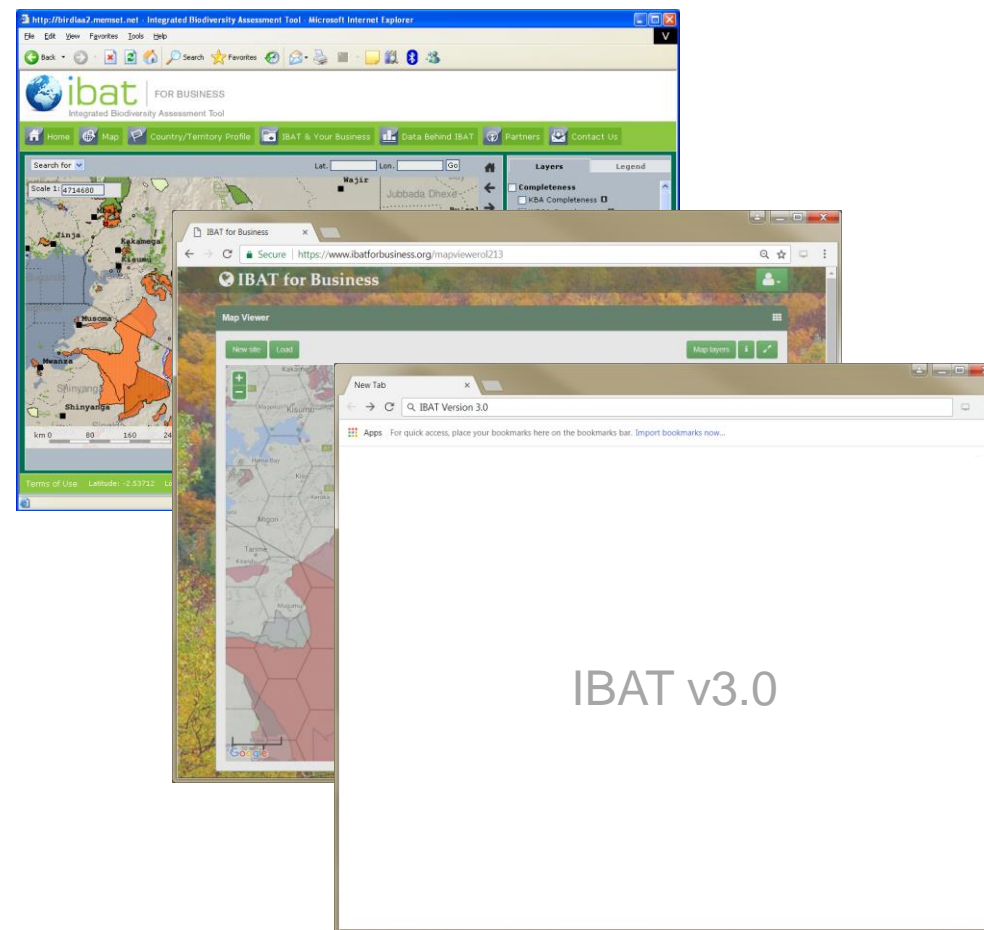
A review of IBAT is nearly complete which will see some of the most significant changes to the tool since its inception in 2008.

The new IBAT Business Plan will aim to improve the financial sustainability of the tool and its underpinning data.

IBAT will be rebuilt for version 3.0 providing a new set of tools for users.

This will be supported by a new account structure to widen the user base and increased resourcing.

Contact: [Matt Jones](#)



# Marine

Apr to Jun 2017

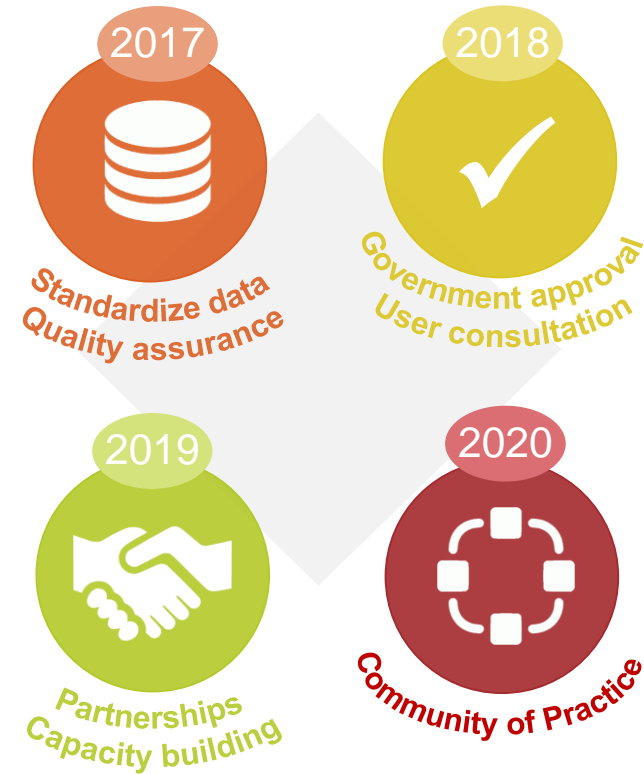
## Proteus Annual meeting Pre-meeting workshop

### Advancing UNEP-WCMC's marine data strategy

Partners contributed to the Centre's strategy to enhance the availability and quality of marine and coastal data resources by 2020, which will be achieved by implementing standardised data and quality protocols and mobilising data through partnerships with global networks and national focal points.

Partners are encouraged to nominate GIS focal points to participate in a focus group to help develop this vision in the coming years.

Access the workshop minutes [here](#).  
Contact: [Lauren Weatherdon](#)



# Resources

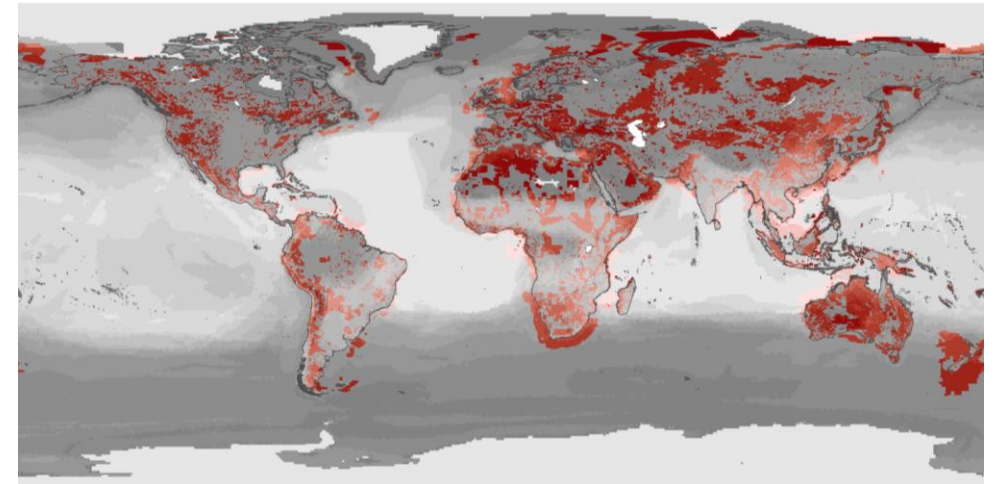
Apr to  
Jun  
2017

## Species' responses to climate change

**New technical briefing note providing an overview of species' responses to climate change which require consideration in biodiversity management strategies.**

Changes in species distributions and behaviour create a need for ongoing biodiversity monitoring and adaptive management. The document lists considerations for a resilient mitigation hierarchy, and provides a summary of data challenges and gaps.

Access the technical briefing note [here](#).  
Contact: [Katie Leach](#)



# Resources

Apr to  
Jun  
2017

## Screening for Critical Habitat

### We are pleased to release the Global Critical Habitat screening layer (version 1.0)

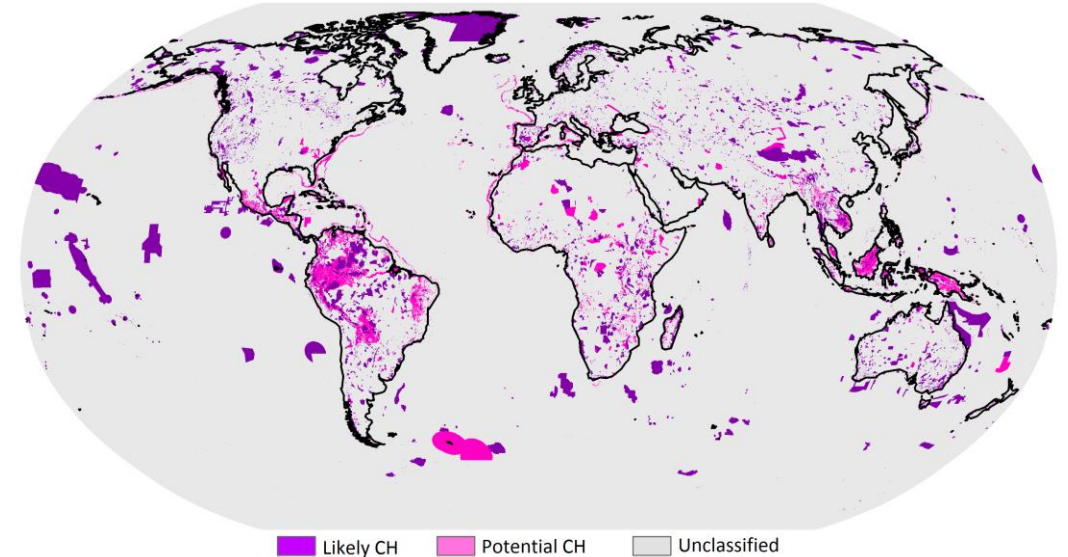
The layer identifies areas of *likely* or *potential* Critical Habitat, as defined by the International Finance Corporation Performance Standard 6 (IFC PS6).

*Unclassified* areas indicate lack of data for assessing the likelihood of Critical Habitat presence.

*The screening layer is distributed as a 1 x 1 km<sup>2</sup> raster dataset, available to Proteus Partners for testing. Information on underlying trigger features is recorded within the layer attribute table.*

Download the Data Pack: <http://wcmc.io/GlobalCriticalHabitat-DataPack>

Contact: [Kerstin Brauner](#)



# Resources

Apr to Jun 2017

## Screening for Critical Habitat

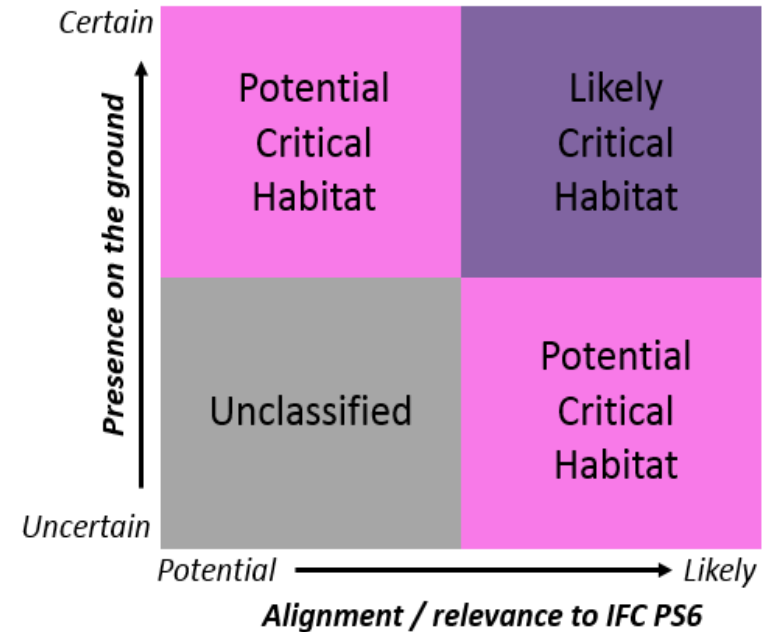
**New technical briefing note supporting the use of the Global Critical Habitat screening layer.**

The global screening layer draws on 20 global-scale spatial datasets. The document outlines underlying datasets and explains the classification approach for determining *likely* or *potential* Critical Habitat.

A series of Frequently Asked Questions are answered to support accurate use and interpretation of the screening layer.

Access the technical briefing note [here](#).

Contact: [Kerstin Brauner](#)



## Screening for Critical Habitat

### New justification documents examining alignment of EBSAs and VMEs with PS6 'Critical Habitat'

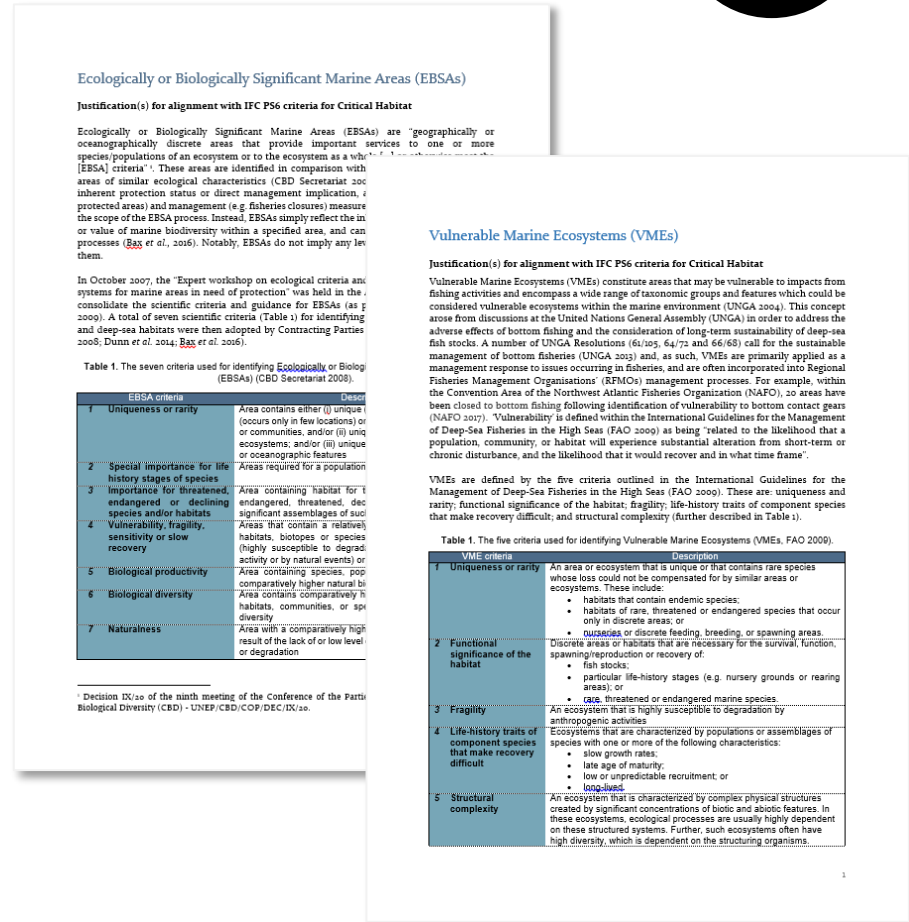
These documents outline the alignment of criteria used to identify Ecologically or Biologically Significant Marine Areas (EBSAs) and Vulnerable Marine Ecosystems (VMEs) with the International Finance Corporation's Performance Standard 6 criteria for Critical Habitat.

Detailed annexes classify the individual features as *likely* or *potential* Critical Habitat, based on alignment.

Access VME justification: [http://wcmc.io/VME-CriticalHabitat\\_Justification](http://wcmc.io/VME-CriticalHabitat_Justification)  
Access EBSA justification: [http://wcmc.io/EBSA-CriticalHabitat\\_Justification](http://wcmc.io/EBSA-CriticalHabitat_Justification)

Use of spatial data for EBSAs and VMEs by Proteus Partners for screening purposes is under negotiation.

Contacts: [Lauren Weatherdon](#) or [Hazel Thornton](#).



# Resources

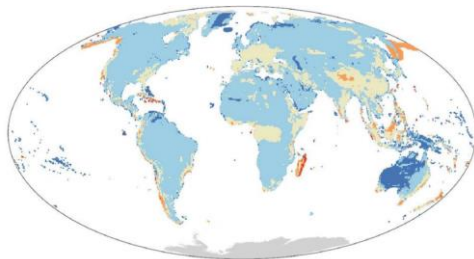
Apr to  
Jun  
2017

## Webinar: Mapping threats to biodiversity

**Prof. Dr. Neil Burgess (Head of Science, UNEP-WCMC) explored how the conservation community measures and maps threats to biodiversity.**

Neil further presented approaches used to assess potential threats to biodiversity posed by extractives.

Access the presentation, or view the webinar recording [here](#).



## Community of Practice: IUCN Red List

**The second gathering of the Proteus Technical Community of Practice discussed the IUCN Red List of Threatened species.**


Caroline Pollock from the IUCN Red List Unit provided insight into the development, approval and representativeness of Red List data.

Access supporting materials [here](#).



# Publications

Apr to  
Jun  
2017

-  **Global goals mapping: The Environment-human landscape**  
University of Sussex and UNEP-WCMC, Scharlemann et al, July 2017. For more information, contact [Neil Burgess](#) (UNEP-WCMC co-author)
-  **Towards an indicator system to assess equitable management in protected areas**  
Biological Conservation, Zafra-Calvo et al, July 2017. For more information, contact [Neil Burgess](#) (UNEP-WCMC co-author).
-  **Large conservation gains possible for global biodiversity facets**  
Nature, Pollock et al, June 2017
-  **An Ecoregion-Based Approach to Protecting Half the Terrestrial Realm**  
Bioscience, Dinerstein et al, April 2017 For more information, contact [Neil Burgess](#) (UNEP-WCMC co-author).
-  **Priorities for big biodiversity data**  
Frontiers in Ecology and the Environment, Stephenson et al, April 2017 For more information, contact [Naomi Kingston](#) (UNEP-WCMC co-author)
-  **Mapping Ecosystem Services**  
Advanced Books, Burkhard & Maes, March 2017 Comprehensive collection of theories, methods and practical applications of ecosystem services mapping.
-  **Privately protected areas: Advances and challenges in guidance, policy and documentation**  
PARKS, Bingham et al, March 2017 For more information, contact [Heather Bingham](#) (UNEP-WCMC co-author)
-  **The Value of the IUCN Red List for Business Decision-Making**  
Conservation Letters, Bennun et al, March 2017



# Calendar

Apr to  
Jun  
2017

## Proteus member events...

### 24 August Technical Community of Practice – Critical Habitat

Register here: <https://attendee.gotowebinar.com/rt/7060263613060674563>

### 3 October Global Biodiversity Agenda series: The IUCN Green List for Protected Areas

Register here: <https://attendee.gotowebinar.com/rt/3139341376736760579>

### 14 November Technical Community of Practice – Enhancing marine and coastal biodiversity screening

Register here: <https://attendee.gotowebinar.com/rt/4417010172394047491>

### 12 December Global Biodiversity Agenda series – Natural Capital

Register here: <https://attendee.gotowebinar.com/rt/3425767454605053955>

## Also coming up soon...

### 19 September Biodiversity in Natural Capital Assessments (Brussels)

Meeting of the European Business & Biodiversity platform

[http://ec.europa.eu/environment/biodiversity/business/news-and-events/news/news-25\\_en.htm](http://ec.europa.eu/environment/biodiversity/business/news-and-events/news/news-25_en.htm)

### 14-15 November IAIA Special Biodiversity Symposium (Washington D.C.)

Mainstreaming the mitigation hierarchy in impact assessment. <http://conferences.iaia.org/wdc2017/>

### 20-21 November Birdlife International Business and Nature Forum (Singapore)

### 27-28 November Natural Capital Forum (Edinburgh)

For more information: <https://naturalcapitalforum.com/>

### 4-6 December UN Environment Assembly (Nairobi)

Towards a pollution-free planet. [www.unep.org/environmentassembly](http://www.unep.org/environmentassembly)

### 11-14 December CBD SBSTTA-21 (Montreal)

Meeting of the Subsidiary Body on Scientific, Technical and Technological Advice (SBSTTA) of the Convention on Biological Diversity (CBD) <https://www.cbd.int/doc/?meeting=SBSTTA-21>

