

Proteus 2010 Highlights

Protected Planet

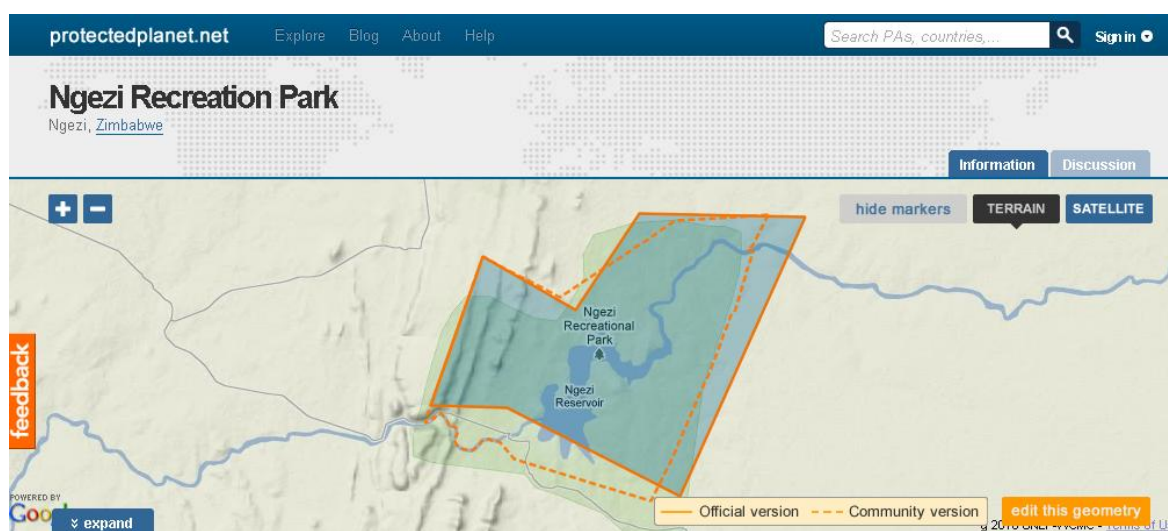
Improved dissemination and functionality of WDPA data through Protectedplanet.net

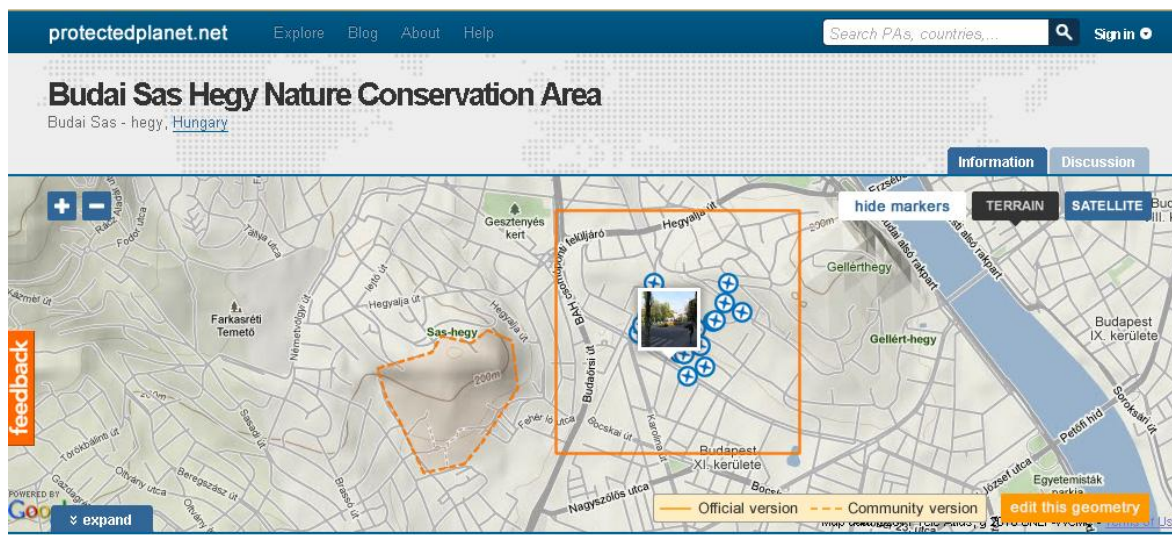
Protected Planet was launched in the last quarter of 2010, in Japan at the CBD COP 10 meeting. The launch events and press conference were well attended. In the week after the launch, the website was visited by 40,000 visitors from 200 countries in the world. It was covered by the national press, featuring on the BBC homepage, and in many blogs and social networking sites reaching many millions of people. In the last 3 months, the user community have updated 500 protected areas, ranked 30,000 images and added over 1000 wikipedia articles.

New features include:

- Fast download
- Country analytics (carbon/freshwater/forests/Protected Area coverage)
- Displaying activity of users submitting data to the WDPA
- Full integration with Wikipedia, Flickr and Google
- Citizen-science interface with increased functionality to upload and update protected areas data
- New facility for UN list data submissions for national data uploads
- An external interface to WDPA where other portals can interact with the data
- Online protected area data quality indicators

Two examples of the citizen-science interface, with community versions of protected area boundaries are shown below:





Ocean Data Viewer

Marine data visualisation and geo-wiki functionality - In order to improve accessibility of existing datasets, UNEP-WCMC developed and launched an ‘Ocean Data Viewer’ (<http://data.unep-wcmc.org>). This is in response to a Convention on Biological Diversity mandate to make data more readily available, as well as to user requests for greater ease of access to data. This viewer provides the following functionality:

- View the relevance and applicability of the dataset to a range of uses, including implementation of various international conventions, marine spatial planning, and private sector uses
- View metadata, methodological data, and citations for the datasets;
- Download the datasets directly where possible (or link to the original data source) and subject to the Terms and Conditions of Use
- Mashup the data in www.ArcGIS.com with other datasets that may be of interest to the user (e.g. privately held datasets; datasets publicly available online)

The Ocean Data Viewer was launched at the Conference of the Parties to the Convention on Biological Diversity in October 2010. A screenshot of the site is provided below:



IBAT

The Integrated Biodiversity Assessment Tool - for business (IBAT) has now been launched as a subscription-based service alongside the IBAT Partners (IUCN, Conservation International, BirdLife International) – www.ibatforbusiness.org

A threatened species distribution grid has now been prepared to be integrated to IBAT and will be available to Proteus partners soon. This will allow partners to visualise and query distribution of threatened species that have been mapped by IUCN and BirdLife International globally.

A free version for the Not-for-profit sector has also been made available. IBAT for research and conservation planning is a version of the IBAT tool designed to facilitate access by national partners to biodiversity information that can support their research and conservation planning needs. The tool can be accessed through <https://www.ibat-alliance.org/ibat-conservation/>

Support to Proteus partners and new tool

Support for Proteus Partners - Ongoing support has been provided to Proteus Partners with their data and analytical needs. This has included support in the areas of:

- Data quality, verification and acquisition
- Communications and training (WebEx and face-to-face)
- Technical assistance
- Analysis and implications of protected area and other areas of biodiversity on exploration and operations (Country/site-level risk assessment)

MyPolygon/Proteus tenement analysis tool – in response to the Proteus partners survey, UNEP-WCMC has developed a new tool based on Protected Planet that allow Proteus partners to overlay tenements/concessions against other layers such as: protected areas and carbon. The beta version of this tool is now available online and we welcome feedback from partners. To access the tool please visit: <http://proteus2.tinypla.net/>. You will need to upload zipped file to test it out which will be sent with this report.

In terms of future development, please let us know:

- a. What other features / functionalities are needed?
- b. What would you like the report to look like and what format (excel, pdf, etc.)?
- c. Does it need to be password protected?
- d. What other data would be useful?
- e. Others?

Improvements to Data

Protected Areas Content

- A new WDPA Data Standard has now been implemented, limiting the number of attributes stored in the WDPA from 44 to 19 to simplify and remove non-globally applicable protected area criteria. The new standard includes a minimum, core and enhanced set of attributes which all protected area data submissions to the WDPA must have. The data standard is available at <http://www.wdpa.org/PDF/WDPA%20Data%20Standard.pdf>

Updates to country data

Location	Status	Comments
Afghanistan	Updated	Replaced old boundary data with new polygon for the provisional Band-e-Amir National Park. Afghanistan is in the process of approving a National Protected Area System Plan.
Australia	Ongoing negotiations	The National Reserve System of Australia and the Environmental Resources Information System send the Collaborative Australia Protected Area Database (CAPAD) bi-annually. An update was expected in May 2010 including >1000 new sites (not currently in the WDPA) and completely free of restrictions. Currently private protected areas are restricted. We explored an MOU process in 2010 and will revisit this in 2011.
Bangladesh	Ongoing negotiations	Ongoing communication for updating Bangladesh protected areas, in collaboration with IUCN's Bangladesh Office. Through the IUCN Bangladesh Country Office we have made new contacts in the Forest Department with regard to updated GIS data. We have thus far received a list of the sites and availability of shapefiles. We are in the process of liaising with the Deputy Conservator of Forests on obtaining the full set and the processes for reconciling the data with the WDPA.
Bolivia	Updated	Updated all polygons received through the IABIN network and Servicio Nacional de Areas Protegidas (SERNAP).
Brazil	Updated and more data being uploaded	We have updated 197 new polygons, 387 updated and 33 new points from the Ministry of Environment; this included both Federal and State Protected Areas. We have received the signed Data Contributor Agreement we were waiting on to update the new dataset from Fundacao Nacional do Indio (FUNAI-National Indian Foundation) and the data will be integrated. The National Private Protected Areas Database (approx. 1,000 sites) is undergoing formatting and will be integrated into the WDPA.
Cambodia	Updated	We have now updated 27 polygons and added 10 new polygons to the WDPA.
Canada	Data received – upload imminent	Canadian Protected Areas were provided through the Conservation Areas Reporting and Tracking System (CARTS). This data was received through a new MoU with the Canadian Council on Ecological Areas excluding Quebec. We are working hand in hand with Canadian Council on Ecological Areas to ensure successful update of their CARTS database which continues in January 2011. Quebec Provincial Protected Areas Data was received and reviewed. Formatting on behalf is underway to prepare the data for integration into WDPA.
Chile	Data received – upload imminent	Through IABIN, the Chilean data is under its second review and has been formatted to the WDPA Data Standard for integration into the WDPA.
China	Updated	We have updated 22 existing and 3 new boundaries for the Jiangxi Provincial Protected Areas received from the Chinese Research Academy of Environmental Sciences. We are working with the Kunming Institute of Zoology to bring together Protected Areas professionals (NGOs, Provincial and Federal Authorities, Academic authorities and UNEP) in China to discuss the status of data on protected areas. We have also received data for the Yunnan province and are updating this now.
Columbia	Updated	We have updated 55 existing and added 6 new boundaries from Parques Nacionales Naturales - Unidad Administrativa Especiales del Sistema de Parques Nacionales Naturales.
Egypt	Updated	Received data for 23 protected areas by the Egyptian Environmental Affairs Agency.
Guyana	Updated	Substituted one point with one polygon for the Iwokrama Forest.

Location	Status	Comments
Indonesia	Ongoing Reconciliation Process	We have received a comprehensive dataset on marine protected areas in addition to a reviewed an updated dataset on terrestrial PA's from the Indonesian Ministry of the Environment (PHKA & DKP). The updated of this data was facilitated by WCMC's involvement in a review of protected area data for South Asia led by the Asian Centre for Biodiversity. Protected areas data for Sumatra was received from the Tiger Conservation Networks Project including only areas where Tigers are found.
Iraq	Updated	We have updated one National park and one Ramsar site (including our first and only polygon for Iraq).
Jordan	Updated	We received an update from the Jordanian Royal Society for Conservation of Nature. A representative came to Cambridge and helped to format in reconcile a new dataset which included an update of 31 new polygons (23 replaced existing points) and 1 new point.
Lao PDR	Updated	We have received protected areas data from the Tiger Conservation Networks Project & have integrated this into the WDPA. We are chasing further data through contacts such as the PA Coordinator within IUCN Lao, a technical contact within the Lao government and another within the Ministry of Agriculture and Forestry.
Liberia	Updated	Updated with support from the Forestry Development Authority of Liberia. 16 polygons were updated, including 11 new polygons, 5 of which replaced points. 12 points were removed. The overall number of records for Liberia has decreased as the WDPA had included National Forest concessions, which due to the permit of extractive activities are not IUCN defined protected areas. Please note that only 2 sites have been legally gazetted at present and a further 3 are going through the legal processes, while the rest are all proposed sites.
Morocco	Updated	A complete update from Morocco was received.
Philippines	Upload imminent	Data received through Philippine Association For Intercultural Development (PAFID) and being formatted.
Russia	Partial Update Complete Update imminent	UNEP-WCMC and the Ministry of Natural Resources and Ecology of the Russian Federation, are negotiating a collaboration focused on WDPA and UN List reporting, as well as enquiring about official nomination of national institution/s as lead agency/ies for contacts on PA data exchange. We have received data from WWF-Russia (Amur Branch) and accompanying data license and will be working to format and finally integrate this data which will be available to Proteus. We have also restored the national dataset to its original condition in 2003 as requested by the Ministry except for 10 sites that failed validation and are under review. Unfortunately until licensing terms can be negotiated further, between the various Ministry Departments, contributing Russian organizations and UNEP-WCMC, most of the restored data is now under restriction and cannot be made available.
South Korea	Data received- Upload imminent	Through our negotiations with IUCN National Focal Point on behalf of the Ministry in South Korea, and our involvement with a review of protected areas data led by the Asian Center for Biodiversity, we have received an updated dataset with 248 sites in South Korea represented. After the review process was completed a final dataset was submitted which is in the pipeline to update. We also recently received additional data (6 polygons) complimentary to the previous data submission from the Korean Forestry Department and have finished integrating this to the WDPA.
Tanzania	Updated	We have updated all Tanzanian protected areas, there are now 612 polygons.

Location	Status	Comments
United Kingdom	Updated	We have received an updated dataset through the European Environment Agency on behalf of the Joint Nature Conservation Committee for inclusion to the WDPA. This dataset is now available to Proteus and we are working to integrate it to the WDPA.
United States of America	Updated – but ongoing review and editing continue	<p>We have updated 46 points and 23161 polygons as part of the new PADUS v1.1 dataset. However, 7,003 sites were removed from the previous US dataset in the WDPA due to the sites not meeting the IUCN definition of a protected area or had unknown names or designations which are minimum required attributes for inclusion in the WDPA. 3,789 sites that would have been new to the WDPA were not updated because they had unknown names and designations. All of these sites are being considered by the PADUS team who are attempting to reconcile the minimum attribute gaps and provide reasons for the sites that did not meet the IUCN criteria. We will distribute this information with the data for the sites as soon as we can. In the mean time, we are happy to make these sites available to as a separate dataset to the WDPA but in the WDPA schema.</p> <p>In October 2010, an error was identified and reported to the PAD US Team which covered 80% of the removed sites. The Yampa River Protected Area was represented by an erroneous polygon in the PADUS dataset which had inadvertently merged over 5,000 sites into one single record thus, losing the individual sites. These sites will be restored from a previous version of the WDPA prior to the next PAD US update.</p>
Arctic	Ongoing reconciliation	We are working to reconcile the CAFF data with the WDPA, the first step of which is matching sites to existing WDPA sites to determine which sites are being updated and which will be new additions to the WDPA. All new additions will go in first, followed by a thorough reconciliation of existing sites to be updated. If a country has submitted an official update for the same site, the countries update will take precedence over the CAFF dataset. With Protectedplanet.net, the CAFF data can be integrated as a whole in the public dataset so both the official data and CAFF data will be visible.
Europe (35 countries)	Partial Update including all polygons; imminent update on points	<p>We continue to work with the European Topic Centre on Biodiversity Data who does all data handling for the European Environment Agency to format and integrate The Annual Common Database on Designated Areas (CDDA) dataset. We have had two technical working group meetings with EEA and ETC/BD representatives and are planning at least one more to focus solely on data integration. We have catalyzed a more active role with ETC/BD that is already starting to facilitate the process of integrating this significant dataset to the WDPA. We have also received Natura 2000 sites and will begin formatting these alongside the CDDA.</p> <p>Most recently WCMC and EEA have been working in collaboration with National Authorities in Iceland and the Republic of Kosovo, disputed territory.</p>

Location	Status	Comments
Caribbean, Pacific and Mediterranean	Ongoing negotiations	WCMC is a strategic partner in the newly formed Mediterranean Protected Areas Network (MedPAN) Strategic Committee. The MedPAN Committee is advising on the development of a new database for Mediterranean Protected Areas. MedPAN will reinforce existing data flows in the region and strengthen key partnerships at national, regional and international scales as they will serve to coordinate national focal points with EEA and WCMC. The UNEP Regional Activity Centre for Specially Protected Areas of UNEP reported four new Specially Protected Areas of Mediterranean Importance (SPAMIs) in 2010 included in the Barcelona Convention and an update on all existing 25 sites. Through working with the Barcelona convention, we will receive this data for integration into the WDPA.

Build African regional Network for protected areas data collection - We have been working to implement a Network of people from government bodies and NGOs from 10 West African Countries on PAs data, including Togo, Mali, Liberia, Chad, Gambia, Ivory Coast, Sierra Leone, Guinea, Nigeria and Ghana. Useful datasets were obtained from some of them as well as important information on the accuracy of PAs data in their respective countries.

Charles Besancon, Head of Protected Areas Programme, attended the MedPAN partners meeting in Tunisia to represent UNEP-WCMC as a strategic partner in the development of the MedPAN database and the development of relationships in the Mediterranean with regard to PAs. This partnership is expected to improve relationships, build capacity and thereby revive data flows from North African Protected Areas to the WDPA.

Coastal and Marine data

Identified opportunities and needs with respect to coastal and marine data

UNEP-WCMC undertook a review and prioritisation exercise to better understand marine and coastal data needs by a broad user community, including the private sector, governments, and intergovernmental organisations. Global interest in the availability and quality of critical marine and coastal ecosystem datasets has increased rapidly in the past year, summarised in the table below.

Influencing Factor	Rationale
Industry needs	Oil spill response planning: the need for high quality datasets by the private sector, particularly, but not limited to, the oil & gas sector, is of high interest to enable improved sensitivity mapping, and a reduction in uncertainty of oil spill response planning;
Climate change mitigation	Coastal ecosystems, particularly wetlands such as saltmarshes, mangroves, kelp forests, and seagrasses, are considered to have considerable Carbon sequestration and storage potential. Protecting them more effectively may thus be a key climate change mitigation strategy. However, developing accurate estimates of actual Carbon sequestration rates requires better datasets than are currently available for these critical ecosystems, and improving them is a priority for effective climate mitigation planning.
National Policy	There is a continuing growth in interest from national governments to undertake more coordinated Marine Spatial Planning (MSP). Data underpin the appropriateness of spatial plans developed, including much of the data collected by industry. Simultaneously, there is a need and opportunity for the private sector to engage directly as key stakeholders in MSP to ensure their needs are explicitly considered and incorporated into spatial plans for national waters. By engaging with the MSP process, through data provision and stakeholder engagement, industrial sectors have an opportunity to contribute to improved policy, knowledge, and cost-effectiveness of

	their activities.
International Policy	<p>In September 2010, the adoption of a 'Regular Process for global reporting and assessment of the state of the marine environment, including socio-economic aspects' was discussed by a dedicated Working Group that provides recommendations to the UNGA. Prior global and regional assessments have repeatedly concluded that there are substantive data gaps which impose considerable uncertainty on the conclusions drawn there from. The purpose of the 'Regular Process' would be to strengthen the science-policy interface for sustainable use, management and conservation of the oceans and seas. The intention is for the 'Regular Process' to be a transparent assessment process that promotes participation of all relevant stakeholders (including the private sector). As yet the concept of the Regular Process has not been adopted but it is still on the agenda and if adopted may provide a platform for data and knowledge sharing.</p> <p>The need for improved availability, quality, and interoperability of data on critical marine ecosystems, to support implementation of the Convention on Biological Diversity is also recognised. The Decision adopted in October 2010 was an invitation to the CBD to work with a range of States and organisations, including UNEP-WCMC, to facilitate availability and interoperability of the best available marine and coastal biodiversity datasets and information across global, regional, and national scales. Since most countries of the world are Party to the Convention, this need cycles back to the MSP data requirements at the national policy planning level.</p>

There is a convergence of need, from multiple sectors, and multiple scales of operation, for the better availability of spatial and temporal resolution data. This need is particularly strong for marine and coastal ecosystems which are considered to be critical for biodiversity, and which provide key ecosystem services such as carbon sequestration, fisheries provisioning, waste processing etc. Priority datasets include:

Dataset	Activity to date
Warm water coral reefs	UNEP-WCMC has recently amalgamated new, higher resolution (30m LANDSAT imagery) data made available through partners, this new layer was published in 2010
Mangrove forests	UNEP-WCMC has just published a new Mangrove Atlas, in collaboration with many partners. This new atlas provides a much improved global baseline of mangrove extent
Saltmarshes	UNEP-WCMC houses the only existing global dataset on saltmarshes and is in the process of updating it
Seagrasses	UNEP-WCMC houses the only existing global dataset on seagrasses and is in the process of updating it
Other critical ecosystems	Various other critical ecosystems, including kelp forests, seamounts, cold water corals, and deltas are also of high priority for improvement