

# PROTEUS ANNUAL MEETING

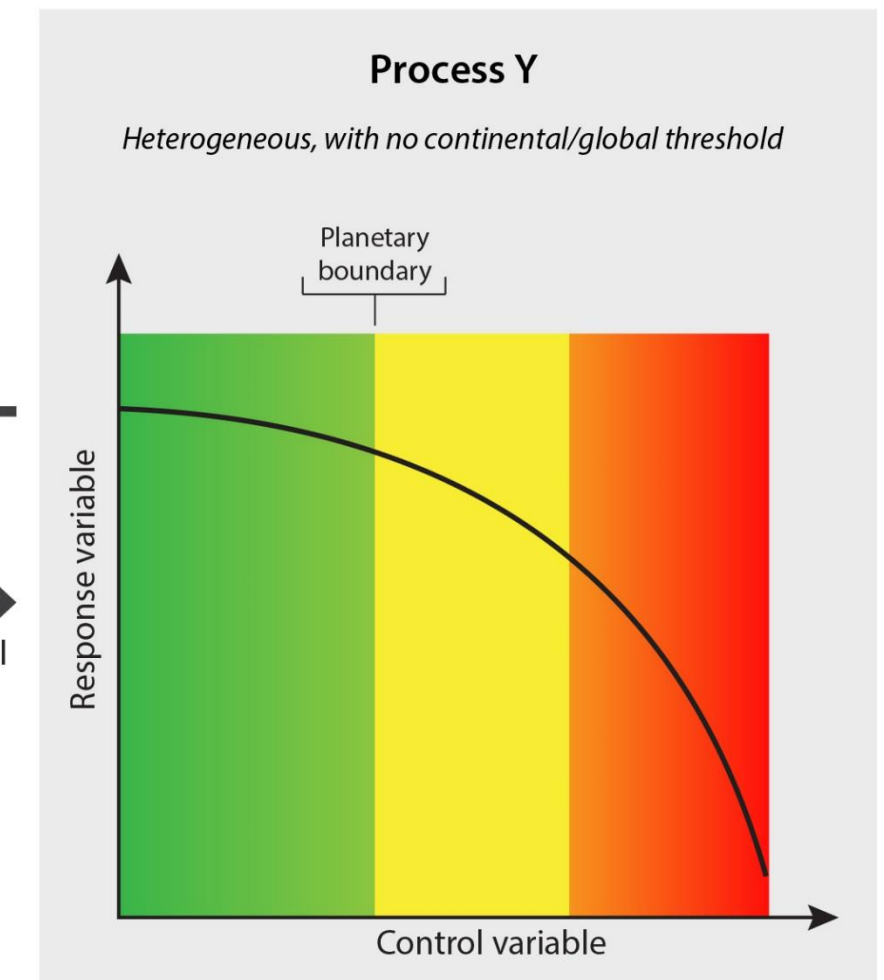
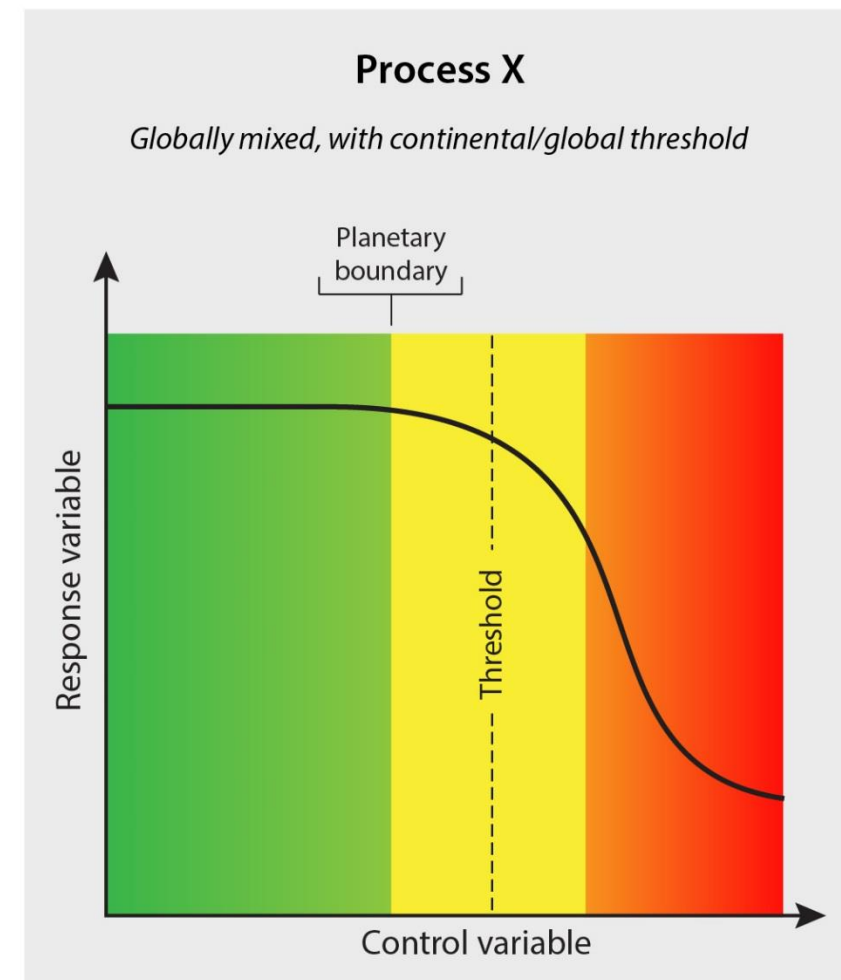
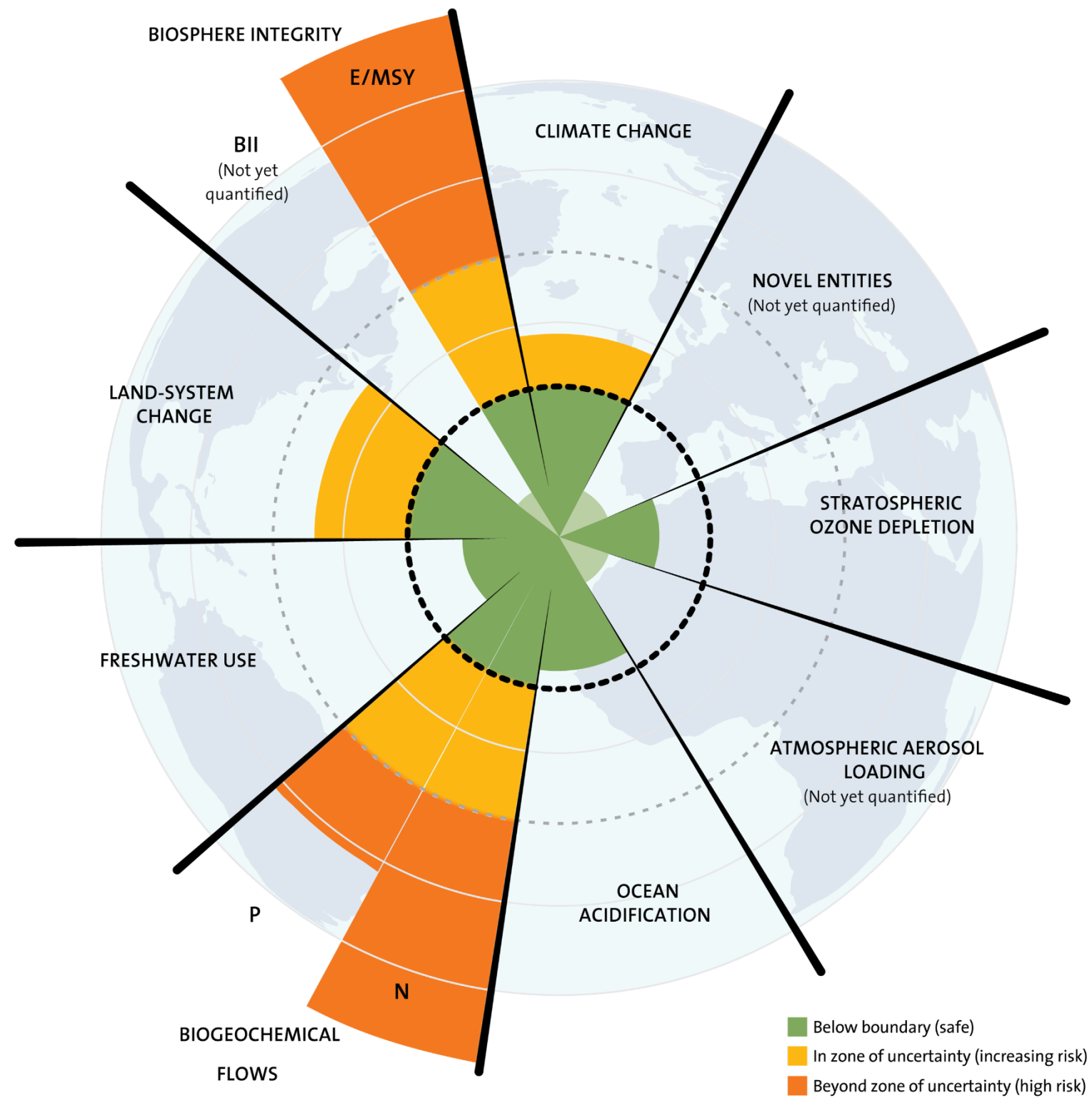
13<sup>th</sup> – 14<sup>th</sup> June 2019, David Attenborough Building, Cambridge, UK



# SCIENCE BASED TARGETS

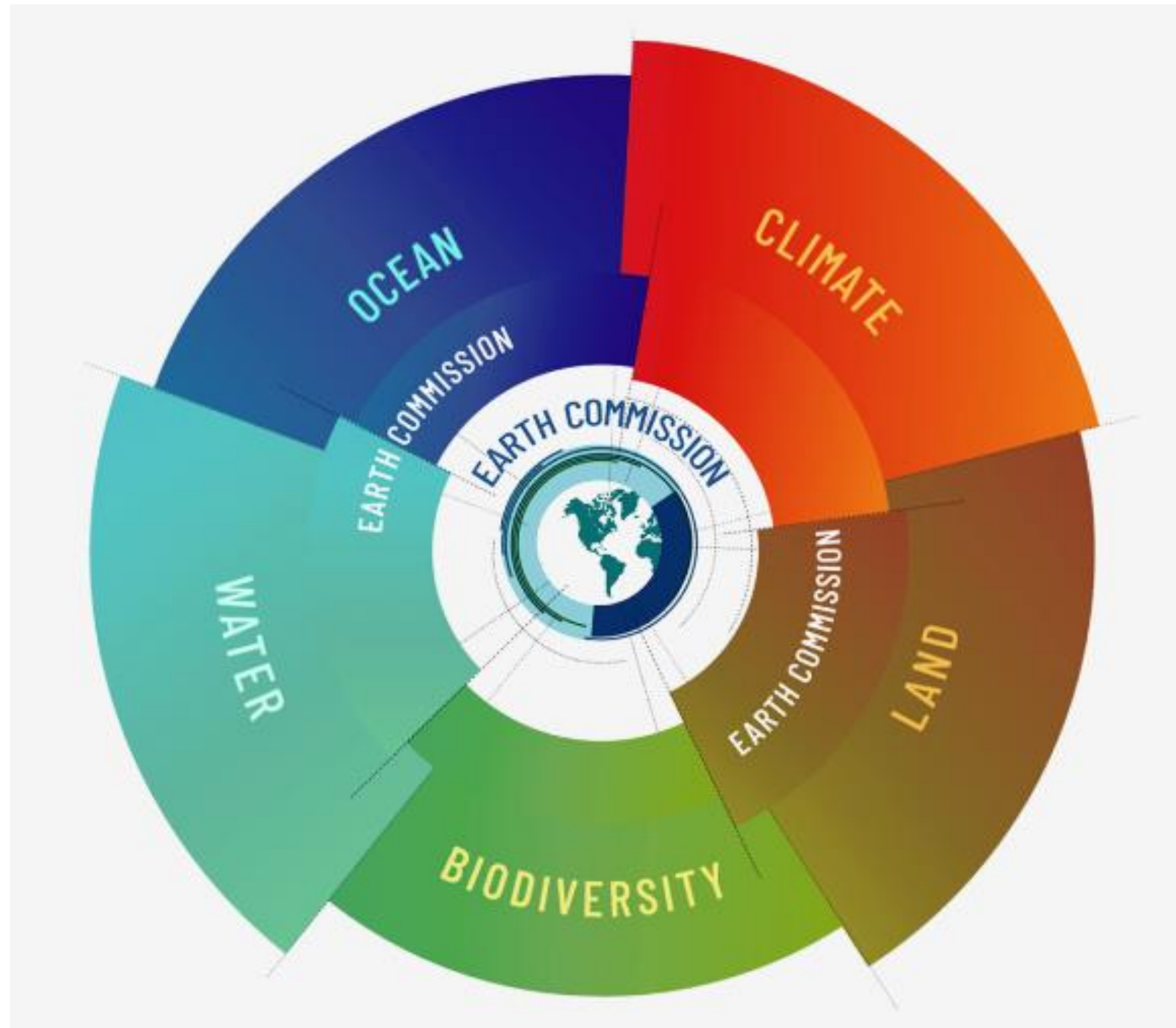
Samantha Hill

# Planetary boundaries



■ Safe operating space    
 ■ Zone of uncertainty: Increasing risk of impacts    
 ■ Dangerous level: High risk of serious impacts

# Science based targets network

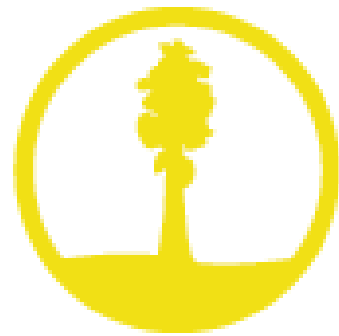
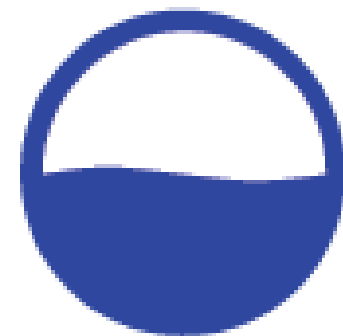


## **Vision:**

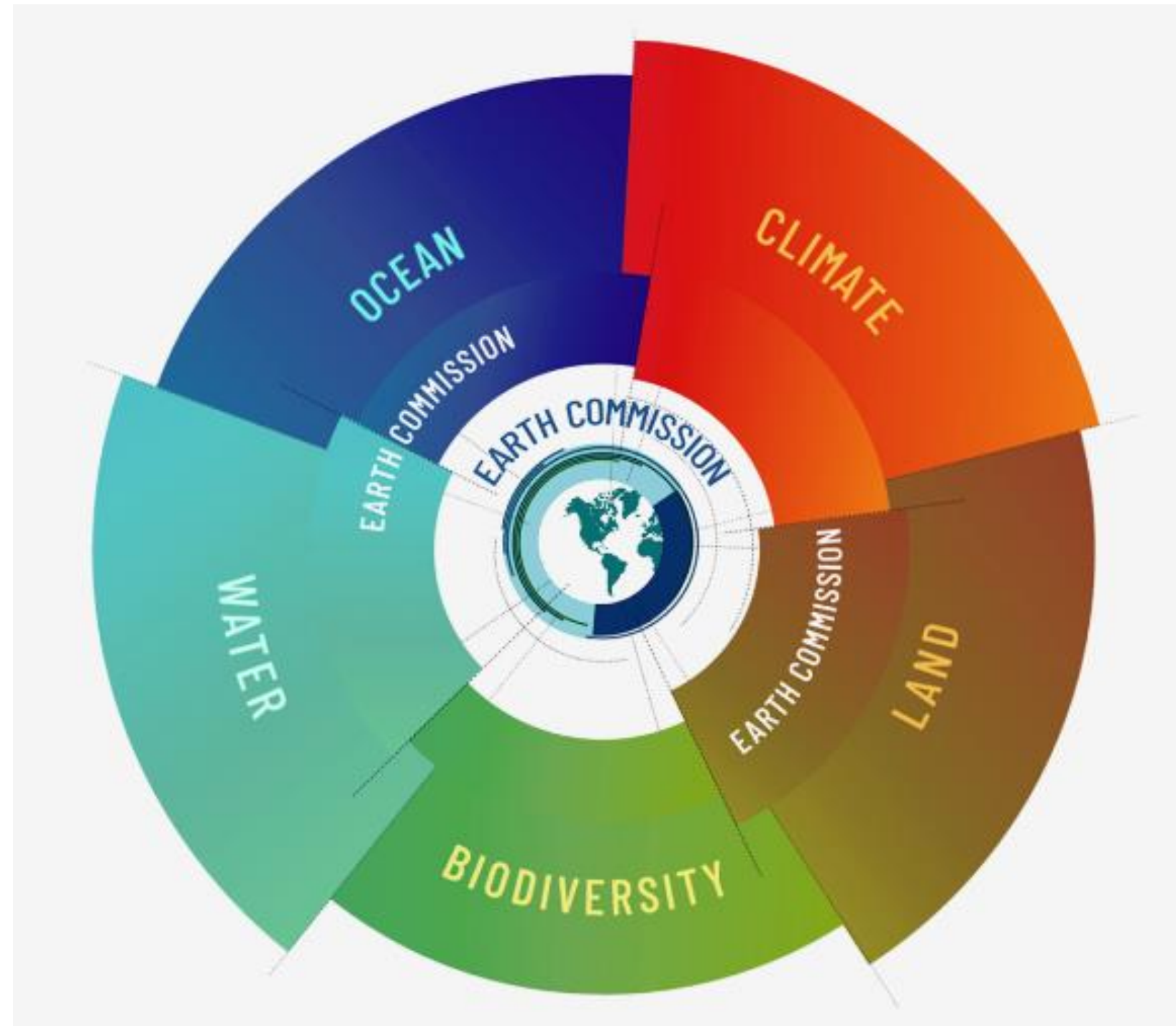
The global economy internalizes environmental externalities and operates on a socially equitable basis within environmental boundaries.

## **Mission:**

Develop methodologies for major global companies (and their supply chains) to set SBTs for each relevant boundary. By 2025 achieve widespread adoption with impact as a leading factor  
Make significant progress in line with key 2020 global policy milestones.

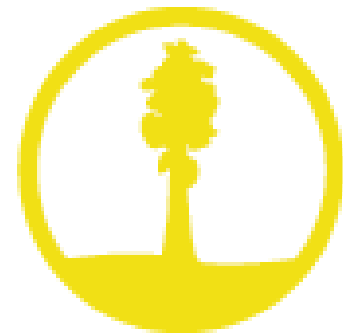
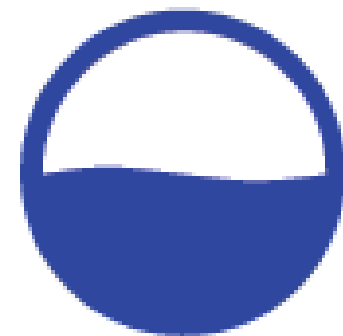


# Science based targets network



## 40 organisations involved including:

CDP  
Ceres  
Circle of Blue  
Conservation International  
EAT  
Future Earth  
IUCN  
Natural Capital Coalition  
Ocean Unite  
Potsdam Institute for Climate Impact Research  
The Nature Conservancy  
UNEP-WCMC  
United Nations Global Compact  
We Mean Business  
World Benchmarking Alliance  
World Economic Forum  
World Resources Institute  
WWF



# Biodiversity Hub



## Members:

- UNEP-WCMC
- IUCN
- The Biodiversity Consultancy
- Potsdam Institute for Climate Impact Research
- WWF
- Conservation International
- Natural Capital Coalition
- Stockholm Resilience Centre

Remit includes state of biodiversity, not drivers

State of species, ecosystems

Gaps in knowledge - genes



# Biodiversity Hub - Species



## Species Threat Abatement and Restoration (STAR)

- Assesses importance of a defined area in terms of species extinction risk
- For species present, identifies pressures that influence risk of extinction
- Links pressures to actions of specific actors to achieve abatement of risk or restoration of species
- Metric can be summed across a portfolio of sites or businesses



# Biodiversity Hub - Ecosystems



Global Biodiversity Score Metric (CDC)

Ecological Integrity Metric (WCS)

Healthy Ecosystem Metric (TBC/CISL)

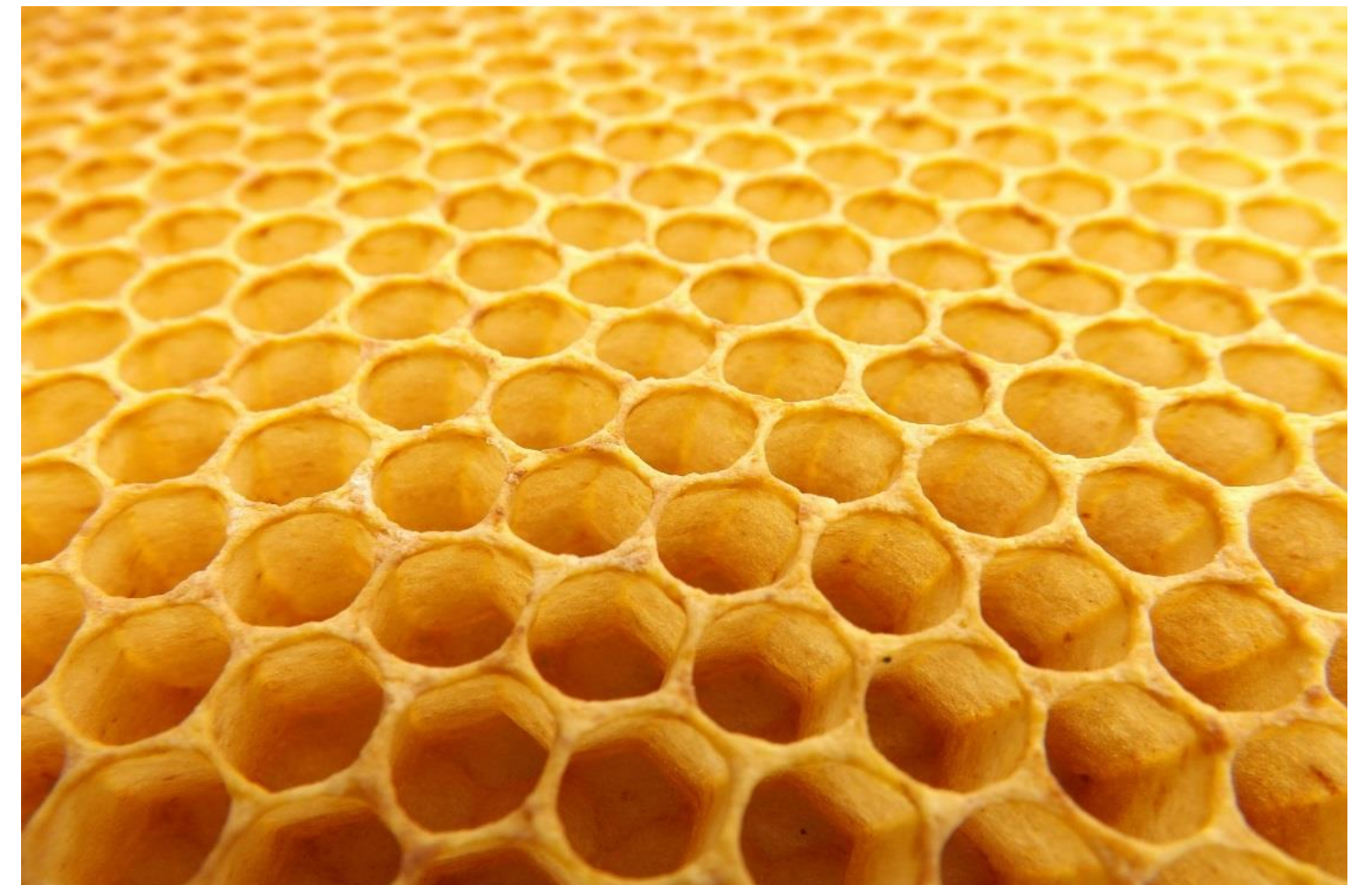
Biodiversity Intactness Index (UNEP-  
WCMC/NHM)

Biodiversity Footprinting (ASN)

Biodiversity Footprint Calculator (PLANSUP)

Agrobiodiversity Index (Bioversity)

LIFE Impact Index (LIFE Institute)





**PLANETARY STEWARDSHIP**  
Mobilize 100 million planetary stewards around the Earth dashboard

**EARTH COMMISSION**  
Identify metrics, assess risks and define targets  
Global Task Force on High Quality Metrics, Targets, Indicators  
**SCIENCE**  
2024-2025

**GLOBAL POLICY PROCESSES**  
Assess, operationalize, & coordinate policies  
Global Policy Process  
2024-2025

**BIODIVERSITY**

**OCEAN**

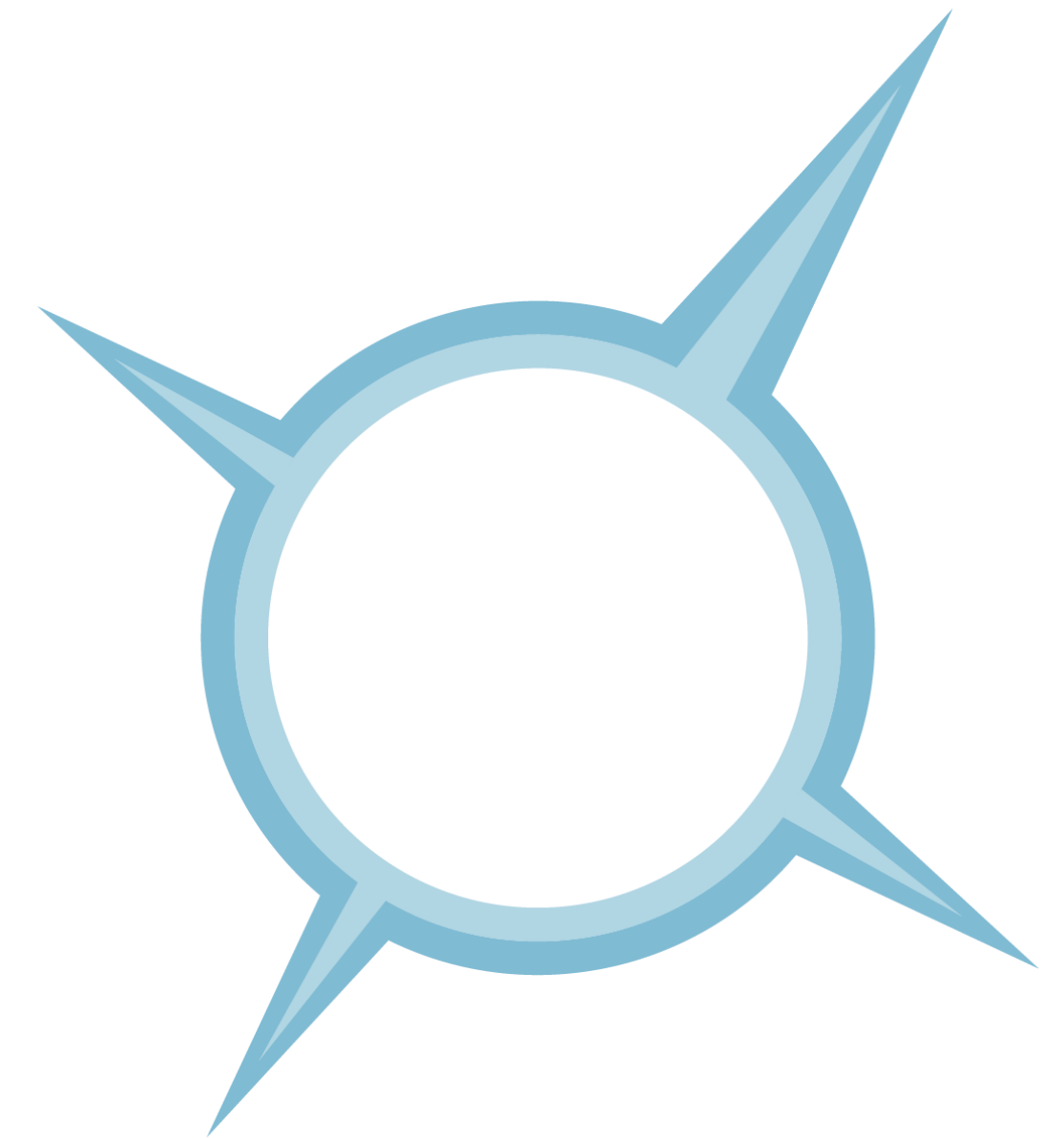
**SCIENCE BASED TARGETS NETWORK**  
Target, Develop, Track, Monitor, Report, Improve

**EXIT**

# Breakout Discussions – 15 mins

1. What is the role of business in the development of science-based targets for biodiversity?
2. How could science-based targets be used by businesses?
3. What are the key barriers to use of science-based targets for biodiversity for business?

ALL: What are the lessons learned from the climate agenda?



# REPORT BACK AND SUMMARY

Annelisa Grigg

# Menti

[www.menti.com](http://www.menti.com)



**#WeCanMakeChange**