

PROTEUS ANNUAL MEETING

13th – 14th June 2019, David Attenborough Building, Cambridge, UK



SCIENCE BASED TARGETS FOR BIODIVERSITY

Annelisa Grigg @annelisag

Multiple lines of exploration



A Global Mitigation Hierarchy for Nature Conservation

WILLIAM N. S. ARLIDGE, JOSEPH W. BULL, PRUE F. E. ADDISON, MICHAEL J. BURGASS, DIMAS GIANUCA, TAYLOR M. GORHAM, CÉLINE JACOB, NICOLE SHUMWAY, SAMUEL P. SINCLAIR, JAMES E. M. WATSON, CHRIS WILCOX, AND E. J. MILNER-GULLAND

Efforts to conserve biodiversity comprise a patchwork of international goals, national-level plans, and local interventions that, overall, are failing. We discuss the potential utility of applying the mitigation hierarchy, widely used during economic development activities, to all negative human impacts on biodiversity. Evaluating all biodiversity losses and gains through the mitigation hierarchy could help prioritize consideration of conservation goals and drive the empirical evaluation of conservation investments through the explicit consideration of counterfactual trends and ecosystem dynamics across scales. We explore the challenges in using this framework to achieve global conservation goals, including operationalization and monitoring and compliance, and we discuss solutions and research priorities. The mitigation hierarchy's conceptual power and ability to clarify thinking could provide the step change needed to integrate the multiple elements of conservation goals and interventions in order to achieve successful biodiversity outcomes.

Keywords: adequacy, biodiversity, development, no net loss, sustainability



Menti

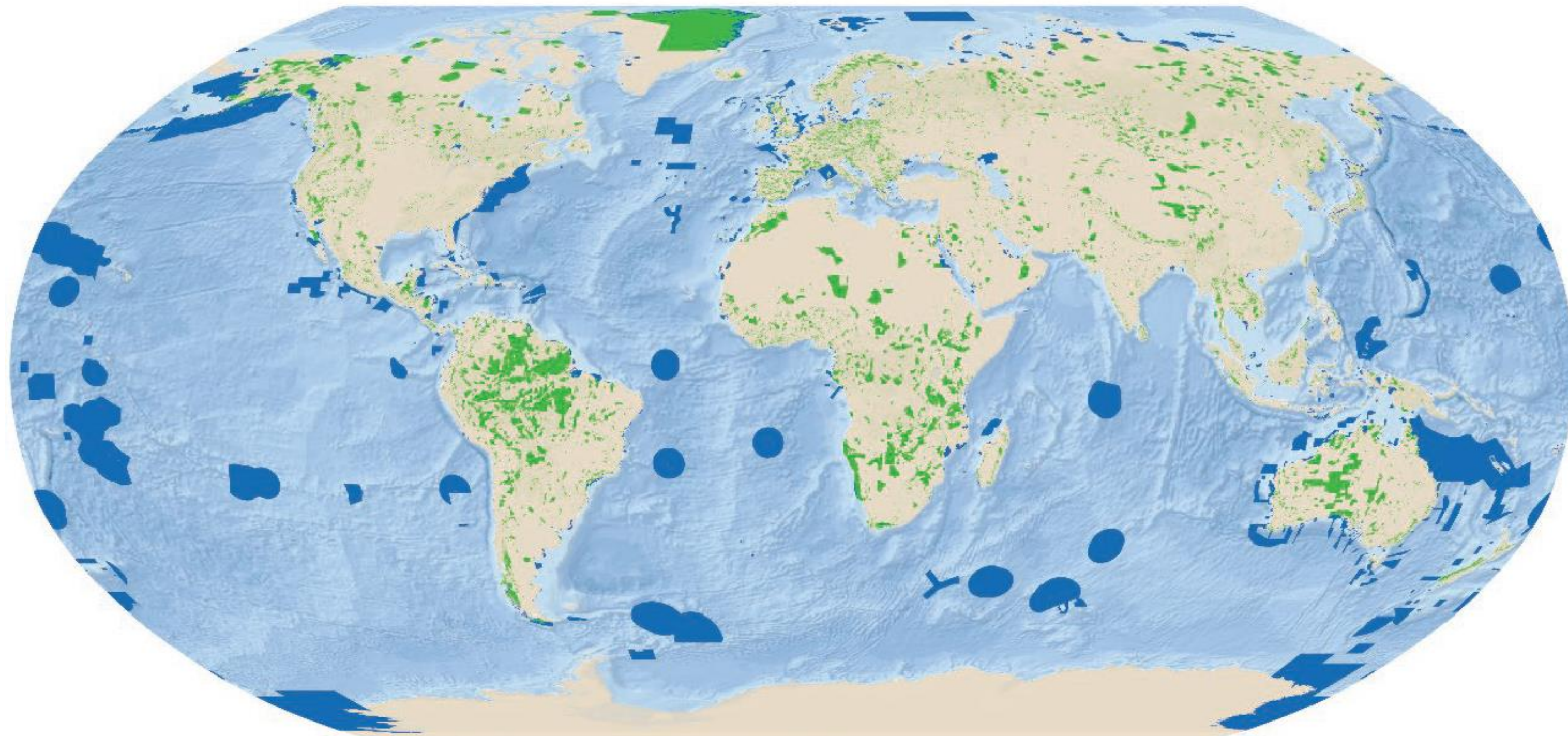
www.menti.com



THE PATHWAY TO A GLOBAL DEAL FOR NATURE

Neil Burgess



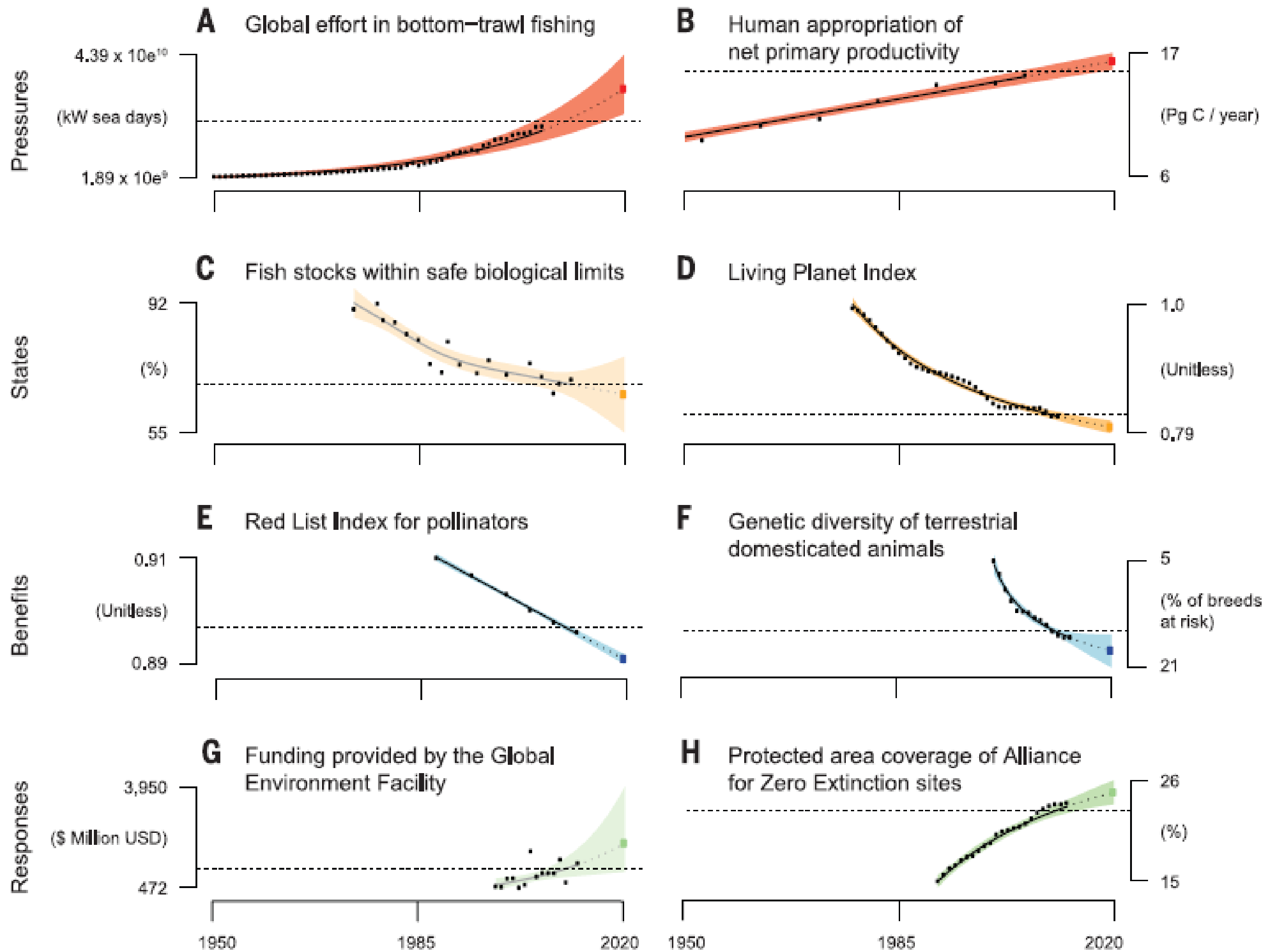


■ Terrestrial protected areas
 ■ Marine and coastal protected areas

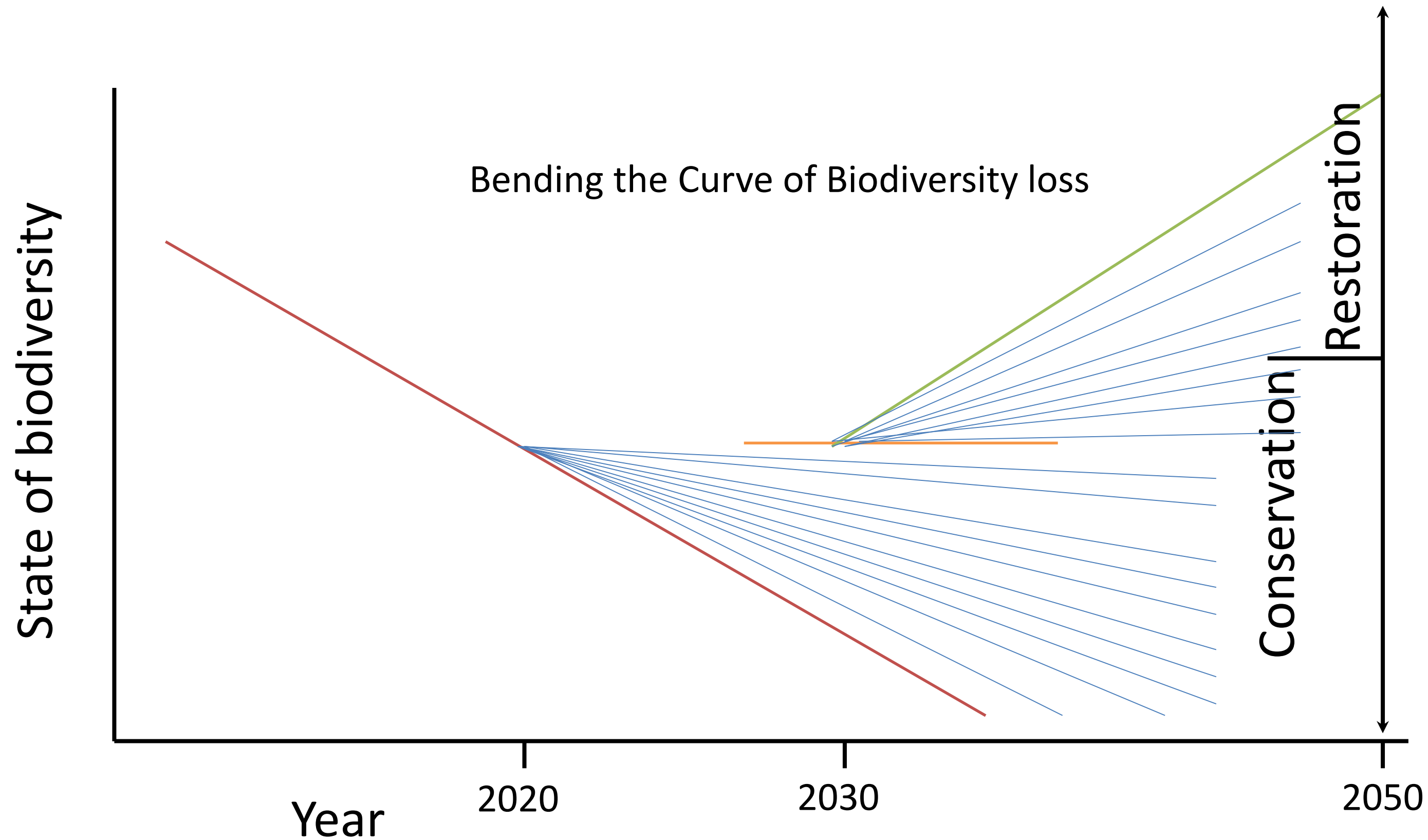


■ Proportion of land covered by protected areas

■ Proportion of ocean covered by protected areas



How might conservation and restoration actions bend the curve?



Actions by

- Regional bodies (EU, AU, ASEAN)
- National Governments
- Local Government
- Cities
- Companies
- Banks
- Individuals

Bending the curve towards what?

- Policy needs an overall target against which to monitor progress.
- But biodiversity is complex with multiple dimensions
- The climate community addressed this by implementing a single (largely political) indicator and target (**2°C**)
- Benefits from being communicable to a non-science audience and so, supports understanding of ambition

Could extinction risk be a similar communicable policy target for biodiversity?

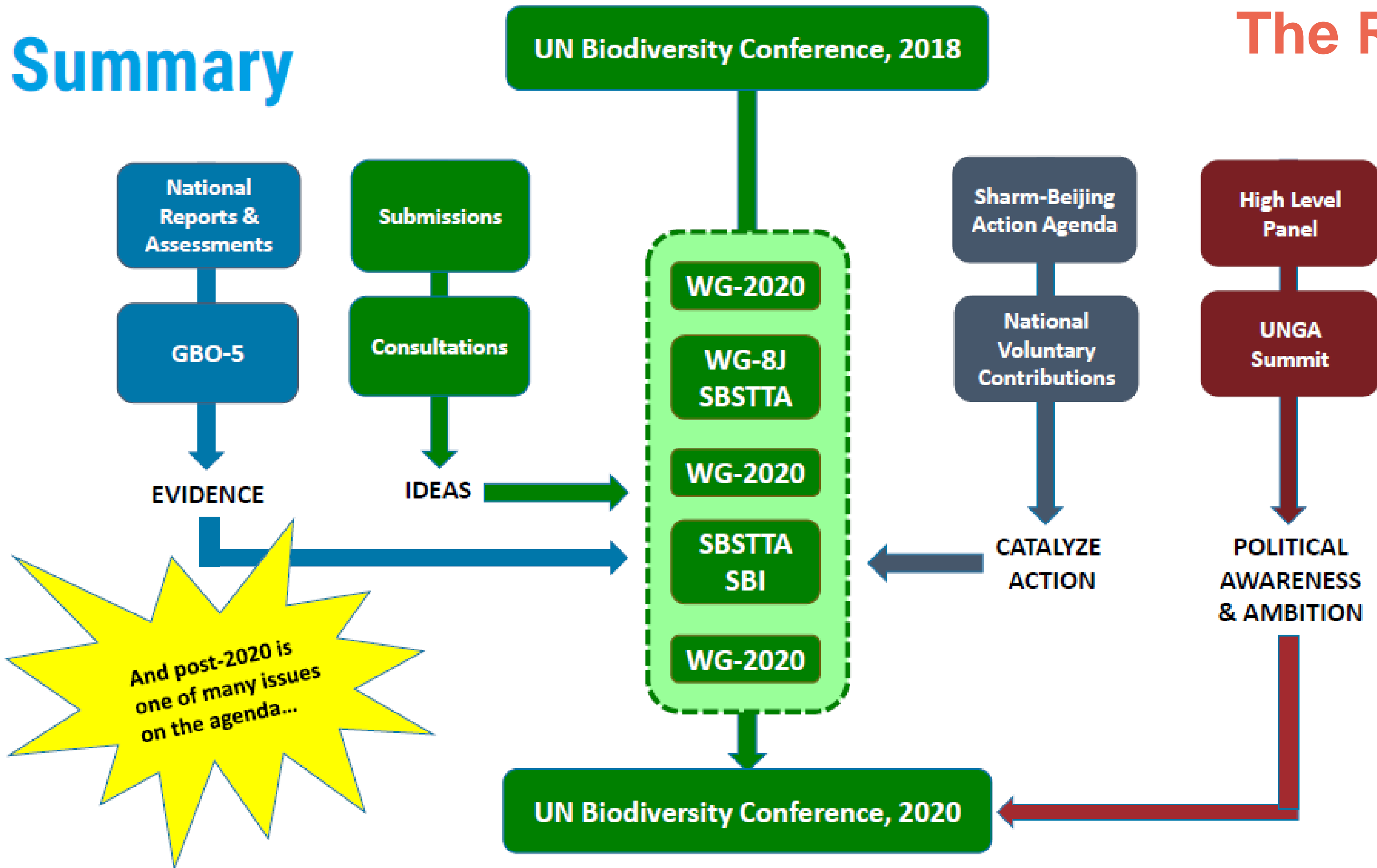
1. fundamental aspect of biodiversity loss
2. widely understood and media popular

The screenshot shows a TIME magazine article titled "The U.N. Reports That 1 Million Species Could Go Extinct. It Shows How Hard It Will Be to Heal the Planet". The article is categorized under "SCIENCE • ENVIRONMENT". The main image is a herd of zebras in a savanna. Below the image, there is a quote: "According to a U.N. report, loss is accelerating to a rate hundreds of times faster than natural". The article is by Jeffrey Kluger and was updated on May 7, 2019. The article text continues: "There's an awful lot of awful in the just-released summary of on biodiversity and ecosystem. There's the tenfold increase in". Below the article, there is a section titled "Extinction" with the sub-headline "A new report confirms that life on Earth is in trouble". A sub-headline below that reads "A million species may be at risk". There is an image of a sea turtle swimming in the ocean. At the bottom, there is a date "May 9th 2019" and a list of social media sharing icons (Twitter, Facebook, LinkedIn, Email, Print).

The Road to Kunming 2020

- 18 months to negotiate a transformational international agreement
- Government, private sector, NGO, general public all have key roles
- Addressing drivers of biodiversity loss critical
- Climate and Biodiversity agendas can come together
- This would be the 'global deal for nature'
- Multiple actors making proposals for elements of this global deal

Summary



The Reality

And post-2020 is one of many issues on the agenda...

Where can the Proteus Partnership add value?

- Keep up the pressure to agree transformational changes in Kunming
- Communicate why this is one of the most important events of our lives
- Consider how business contributions to ‘bending the curve’ can be measured and demonstrated (can we learn lessons from the climate agenda and the climate ‘Science Based Targets’?)
- Help the world change the current economic development pathway to reduce, halt and reverse biodiversity loss.

#WeCanMakeChange