



UNEP



WCMC

**United Nations Environment Programme
World Conservation Monitoring Centre**



**protected
planet**

A photograph of a mangrove forest with prominent prop roots in the foreground and dense green foliage in the background. The water in the foreground is calm, reflecting the trees and sky.

Protected Areas - what we need to know and emerging issues

Naomi Kingston, Head of Protected Areas Programme, UNEP-WCMC

naomi.kingston@unep-wcmc.org



Focal areas

What is a protected area, where are they found and how are they classified?

How might protected areas change in the future?

What other area based conservation measures do we need to be aware of?





**What is a Protected Area,
and where are they?**

What is a Protected Area?

IUCN (Dudley, 2008; 2013)

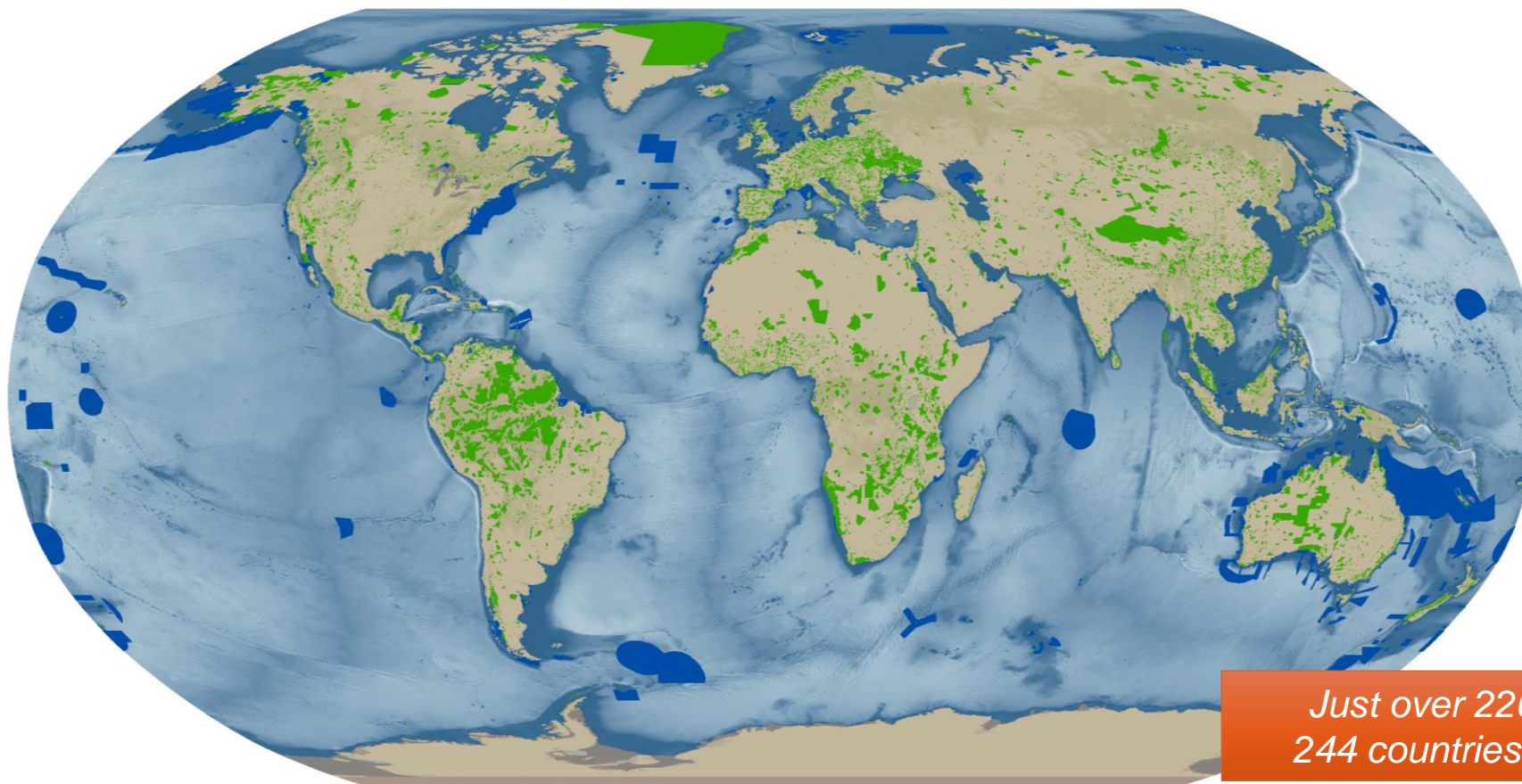
“A clearly defined geographical space, recognised, dedicated and managed, through legal or other effective means, to achieve the long-term conservation of nature with associated ecosystem services and cultural values”

CBD definition (CBD/Article 2)

“geographically defined area which is designated or regulated and managed to achieve specific conservation objectives”.

There is agreement that the two definitions are equivalent.

World Database on Protected Areas



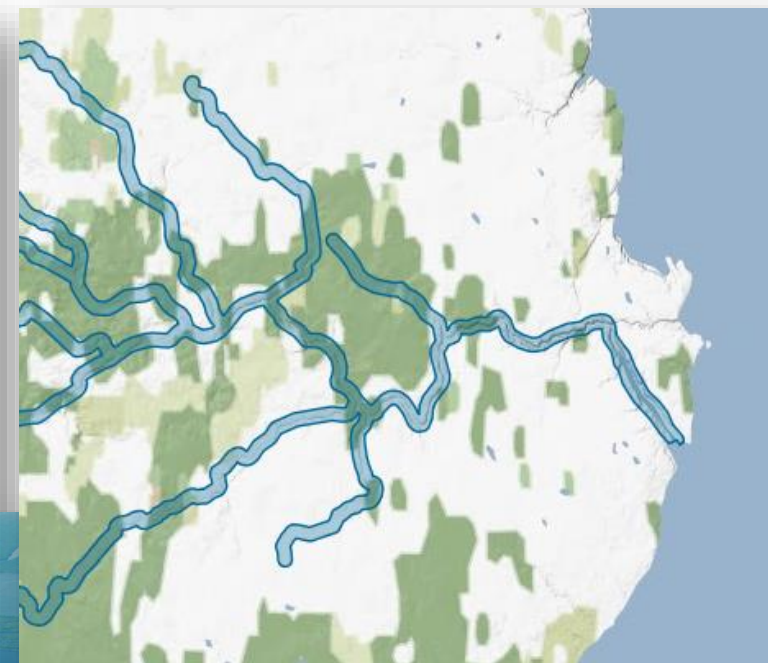
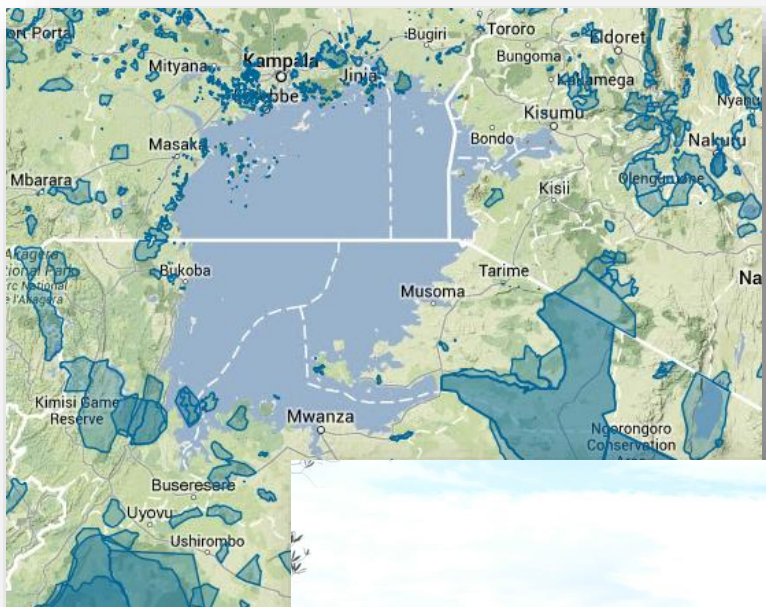
*Just over 220,000 records
244 countries and territories*

 Terrestrial protected areas  Marine and coastal protected areas

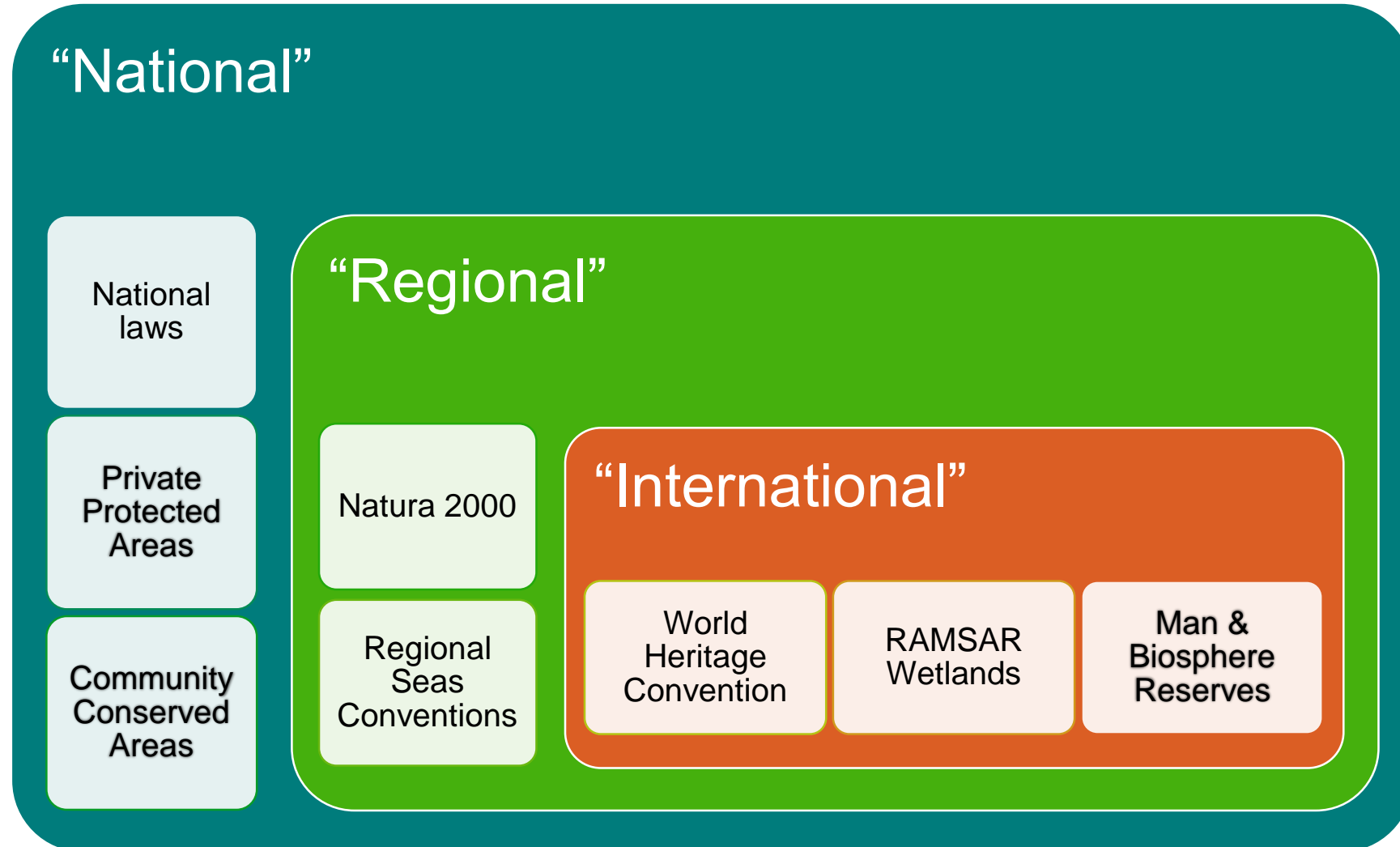


Are they all the same?

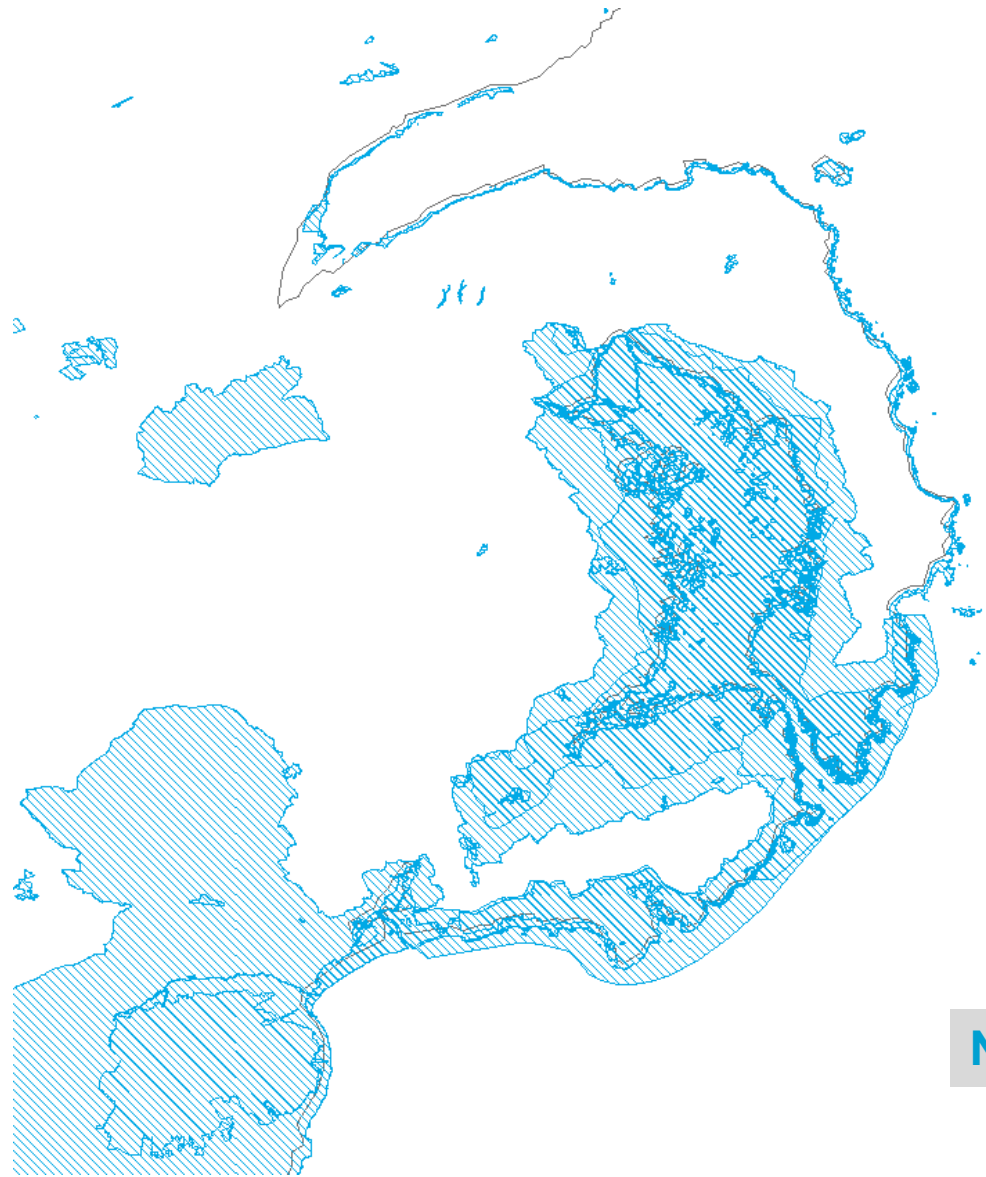
They come in all shapes and sizes!



There are different types of designation







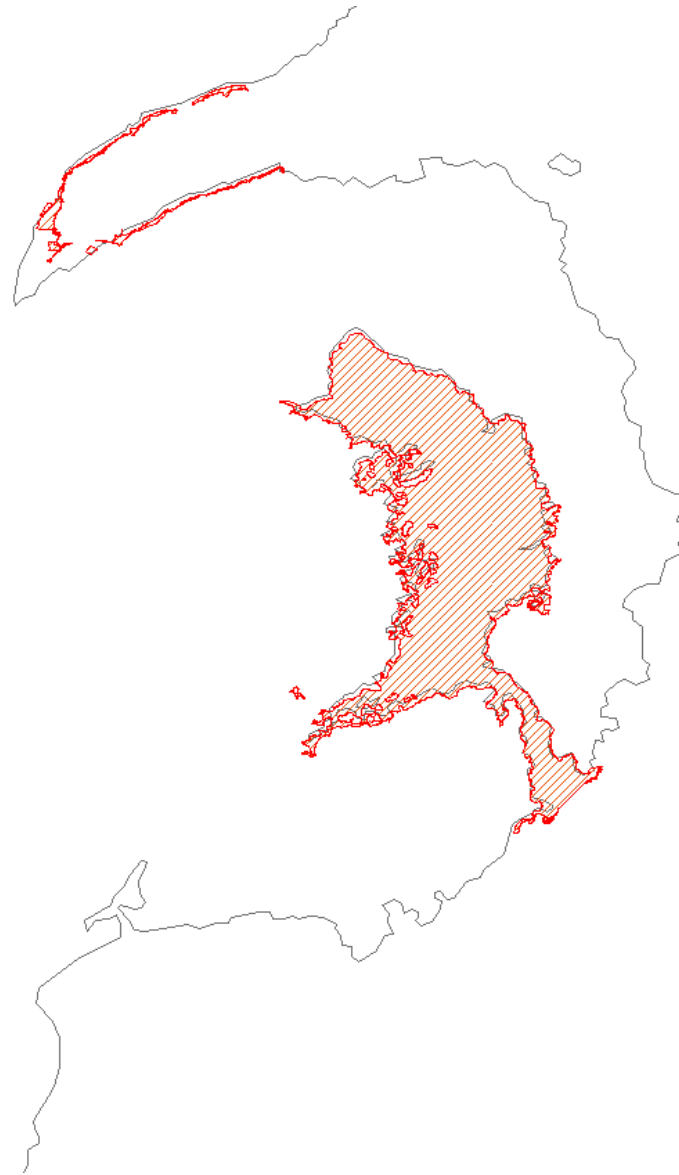
National

Blue



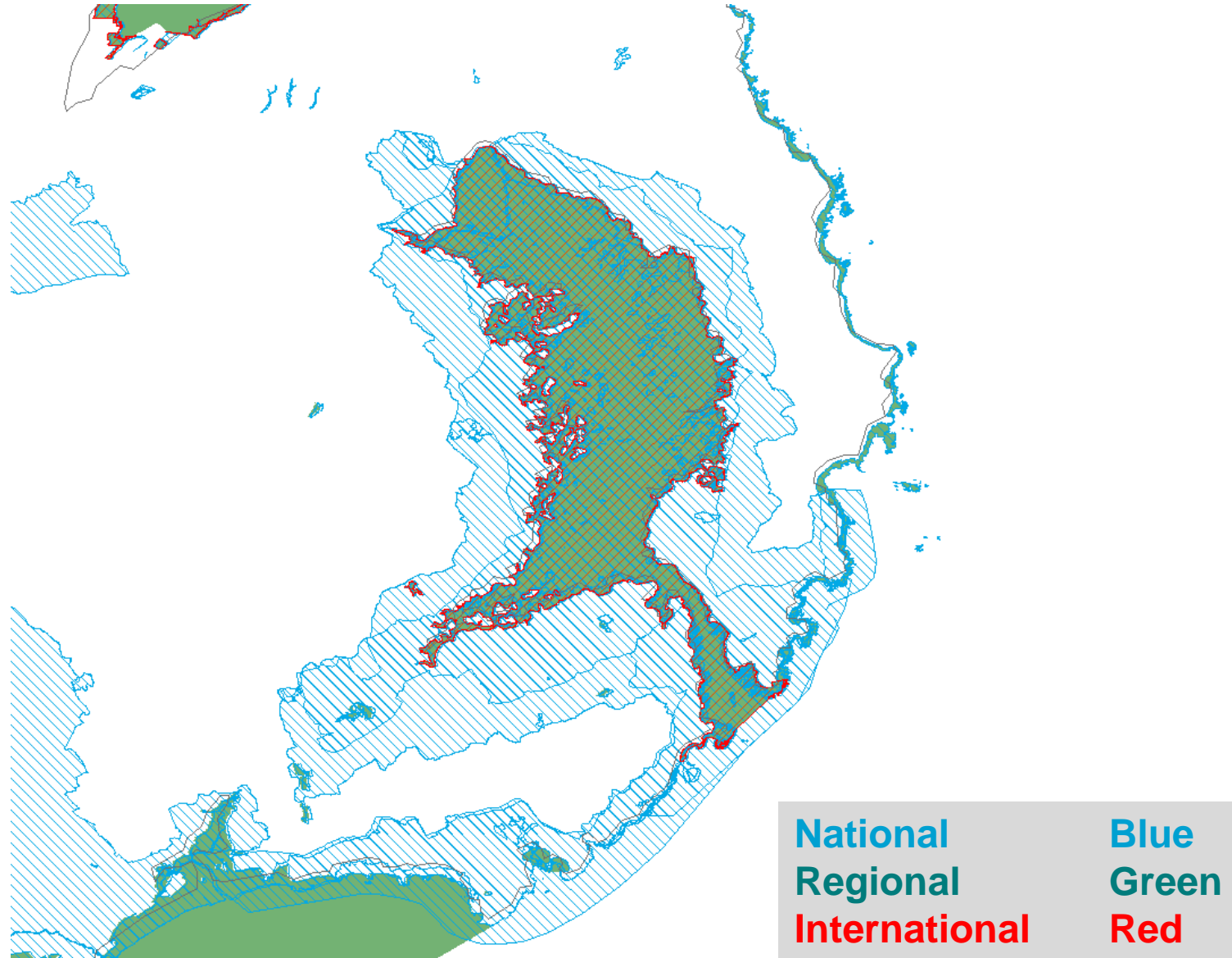
Regional

Green



International **Red**

WATER RESOURCES



Importance of different designations

Sites can be important nationally and internationally, but still not be designated an international protected area

Capacity, funding, and time all affect a country's ability to designate sites, esp. at an international level

A national site may have equal or higher biodiversity value and legal protection than an international site

IUCN Management Categories

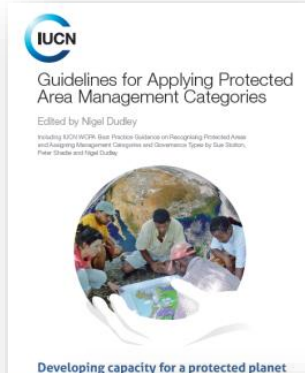
A method for the classification management objective of a protected area

Published in 1994, Revised in 2008, 2013, Marine sup. in 2012

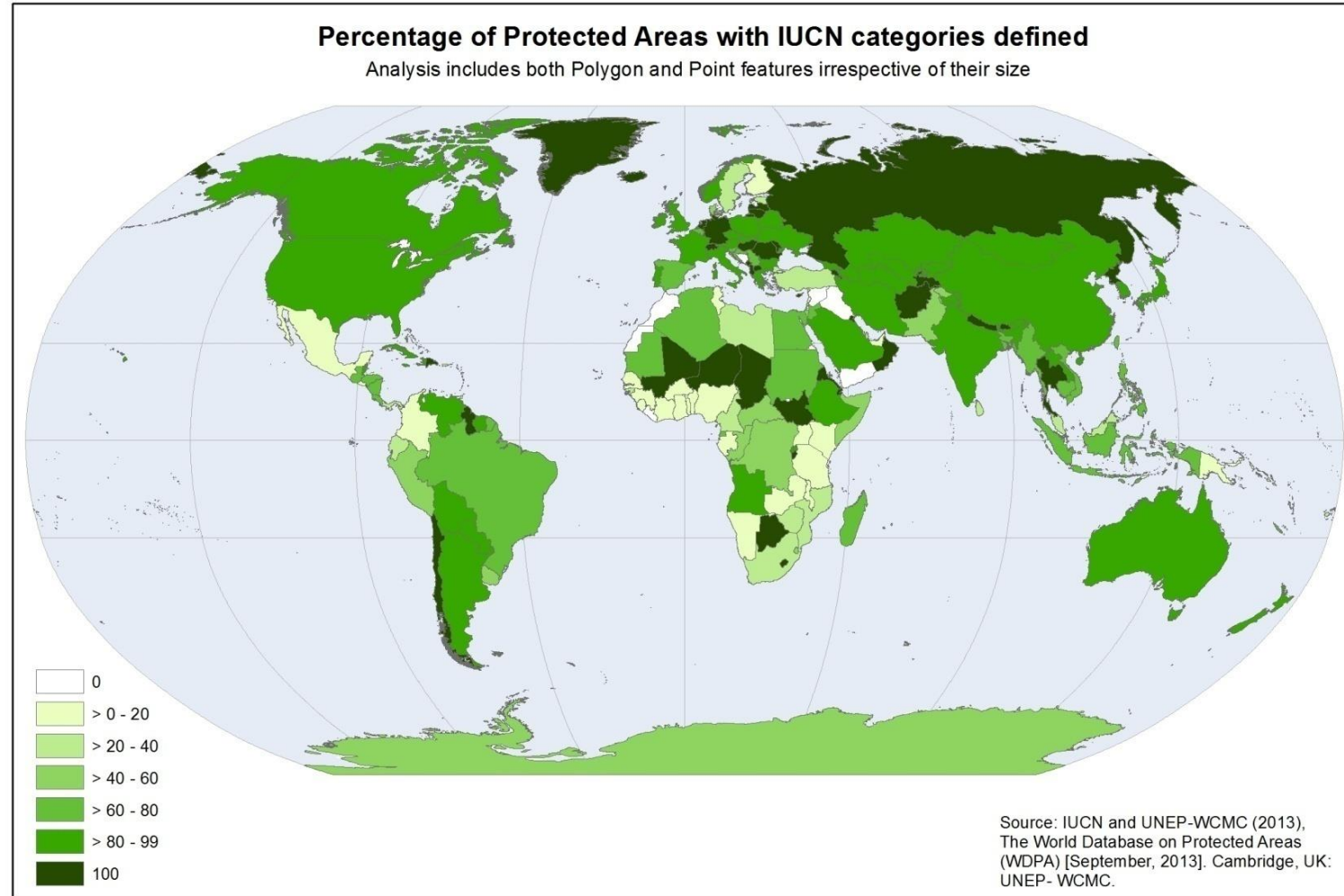
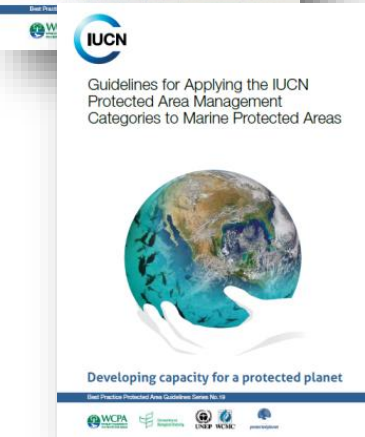
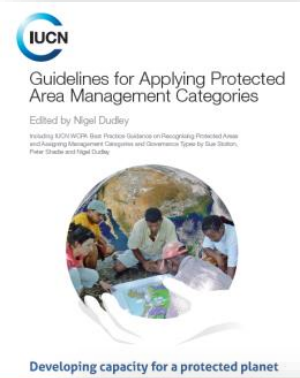
Voluntary system so many protected areas do not have an assigned category

Not a prioritisation system, and not hierarchical

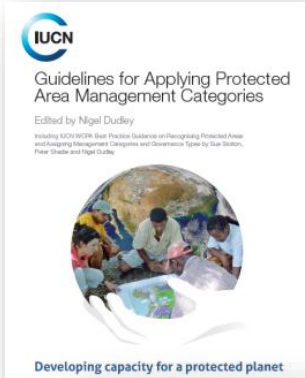
Protected areas without management categories are still protected areas!











IUCN Management Categories



IUCN Management Categories



IUCN Management Category	Description	Proportion of sites
Ia	Strict nature reserve	
Ib	Wilderness area	
II	National park	
III	Natural monument	
IV	Habitat/species management area	
V	Protected landscape/seascape	
VI	Protected area with sustainable use of natural resources	
	Not recorded	

Swiss National Park



The Burren National Park



Everglades National Park



Białowieża National Park



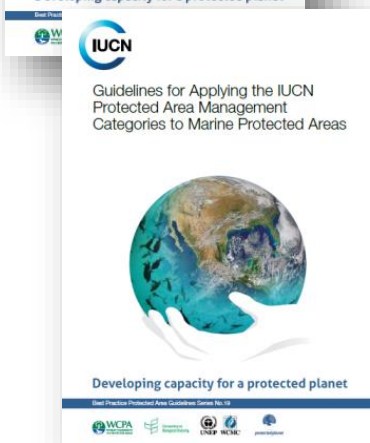
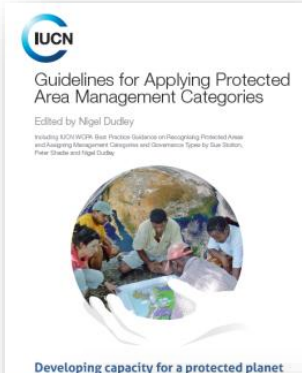
Victoria Falls National Park



Yorkshire Dales National Park



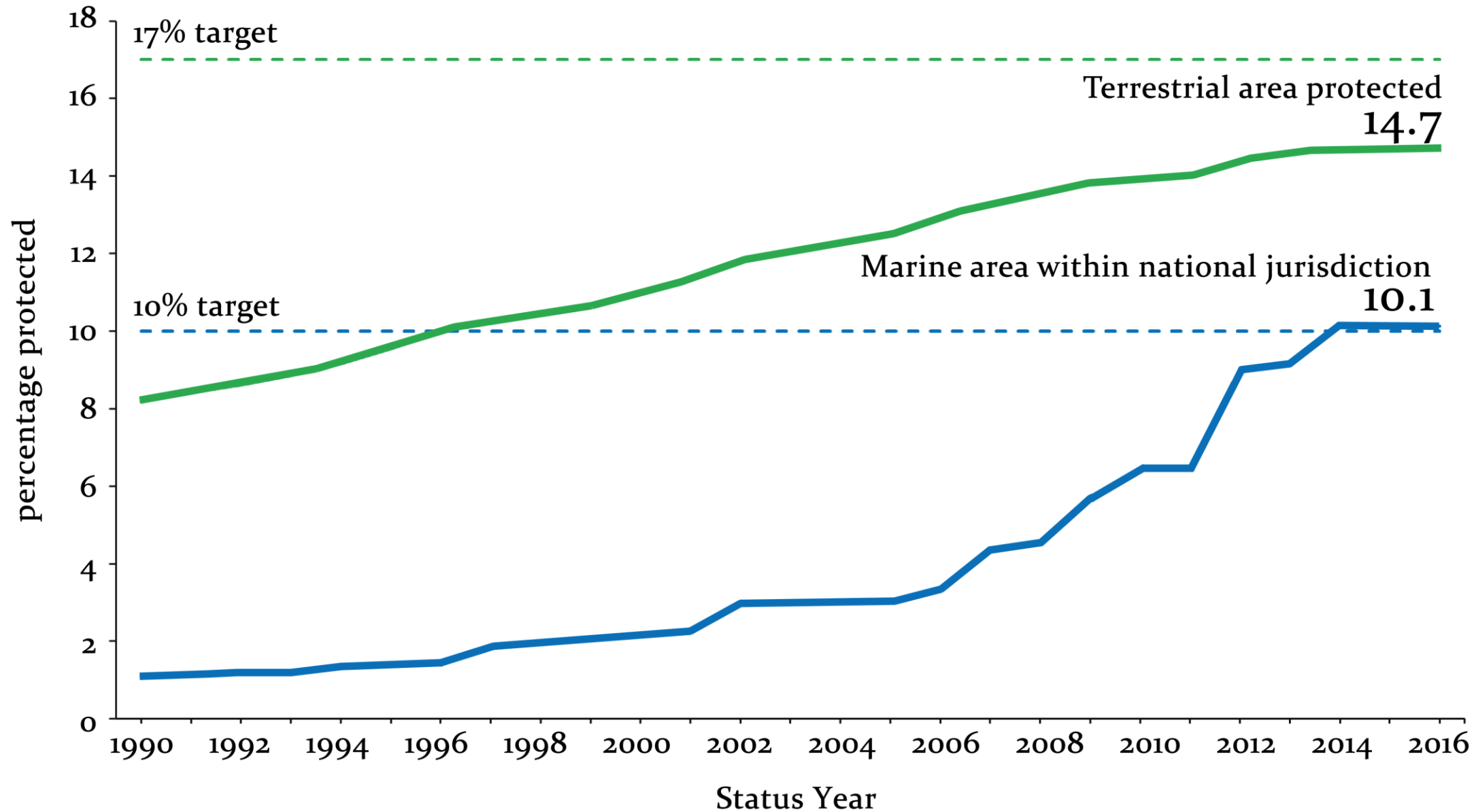
IUCN Management Categories: National Parks



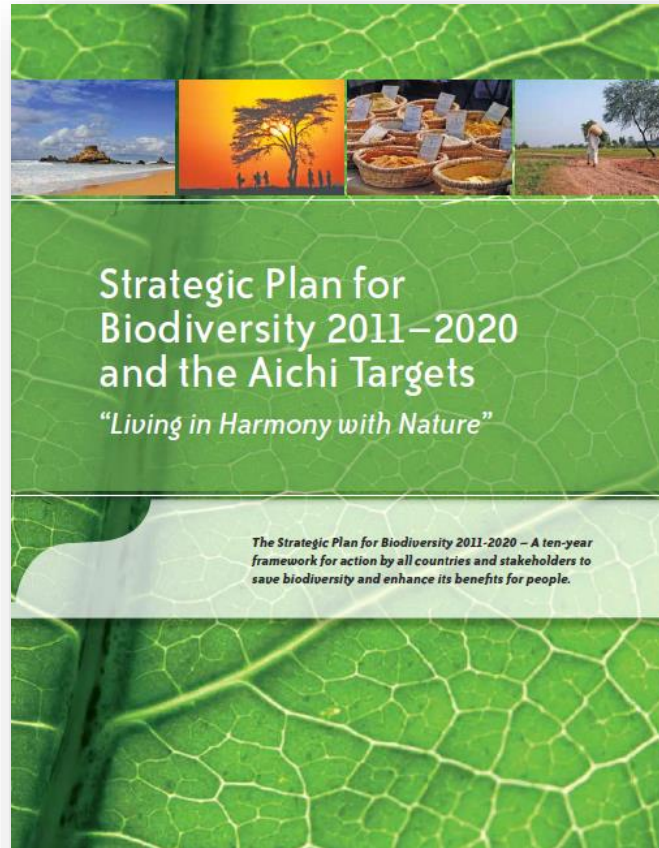
IUCN Management Category	Protected Area	Country
Ia	Swiss National Park	Switzerland
Ib	Everglades National Park	USA
II	Białowieża National Park	Poland
III	Victoria Falls National Park	Zimbabwe
IV	Vitosha National Park	Bulgaria
V	Yorkshire Dales National Park	UK
VI	Etniko Ygrotopiko Parko	Greece
Not recorded	Burren National Park	Ireland



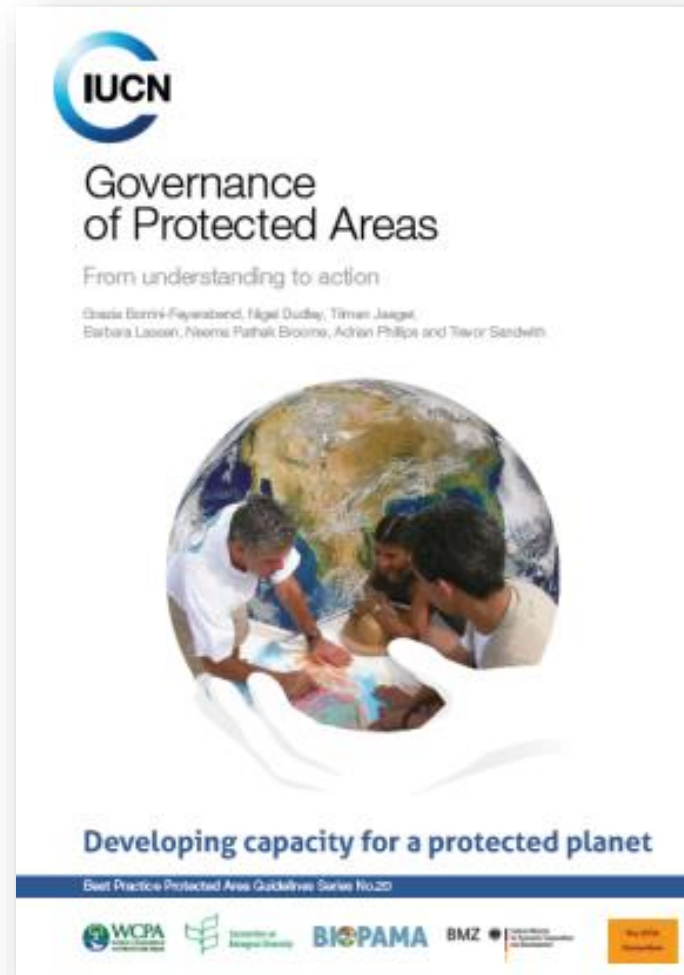
How might protected areas change in the future?



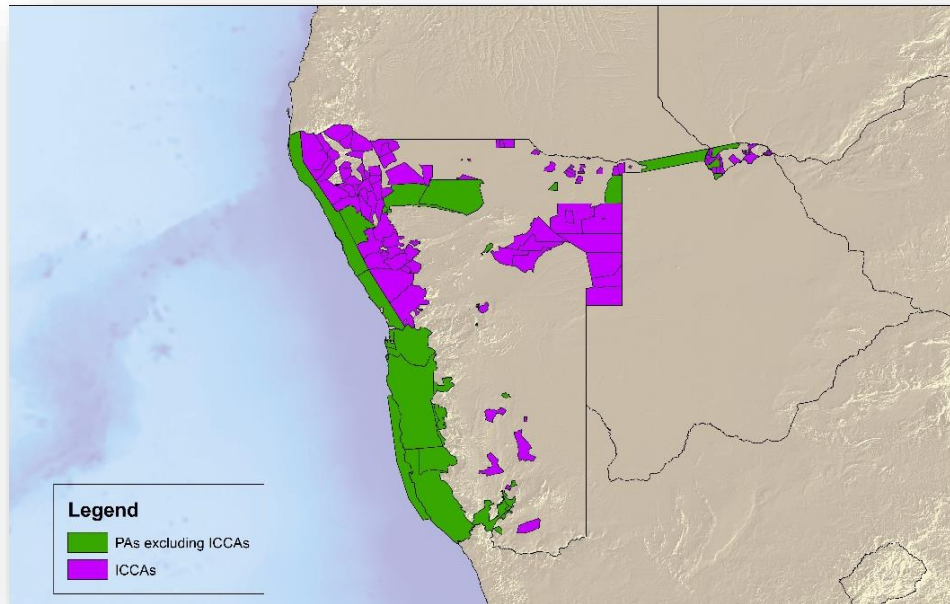
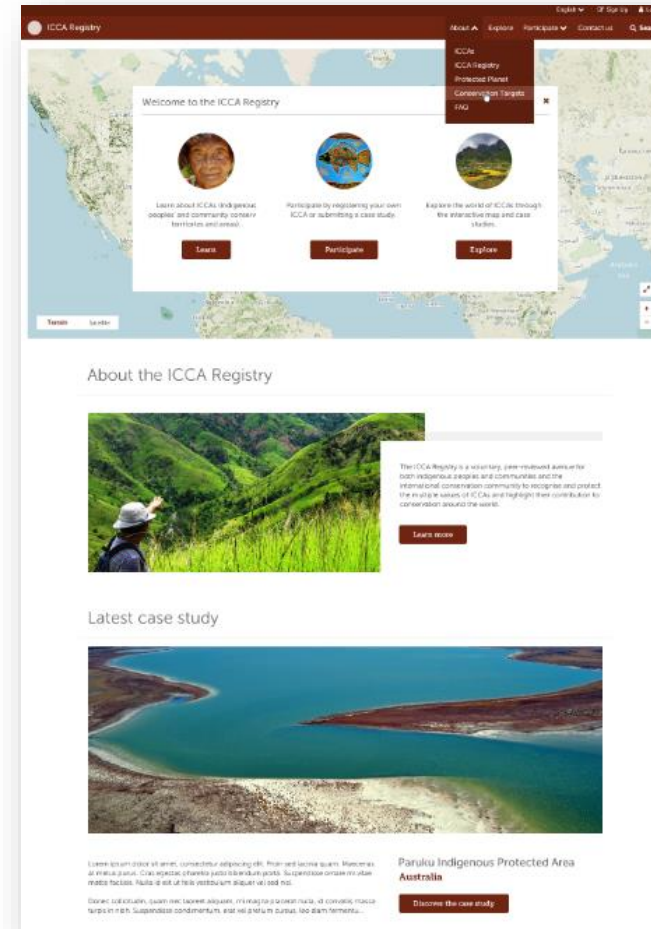
Progress on global goals



Complete network of Protected Areas



Community Conserved Areas

ICCA Registry

Welcome to the ICCA Registry

- Learn about ICCAs, their people, and community conservation territories and areas. [Learn](#)
- Participate by registering your own ICCA or submitting a case study. [Participate](#)
- Explore the world of ICCAs through the interactive map and case studies. [Explore](#)

About the ICCA Registry

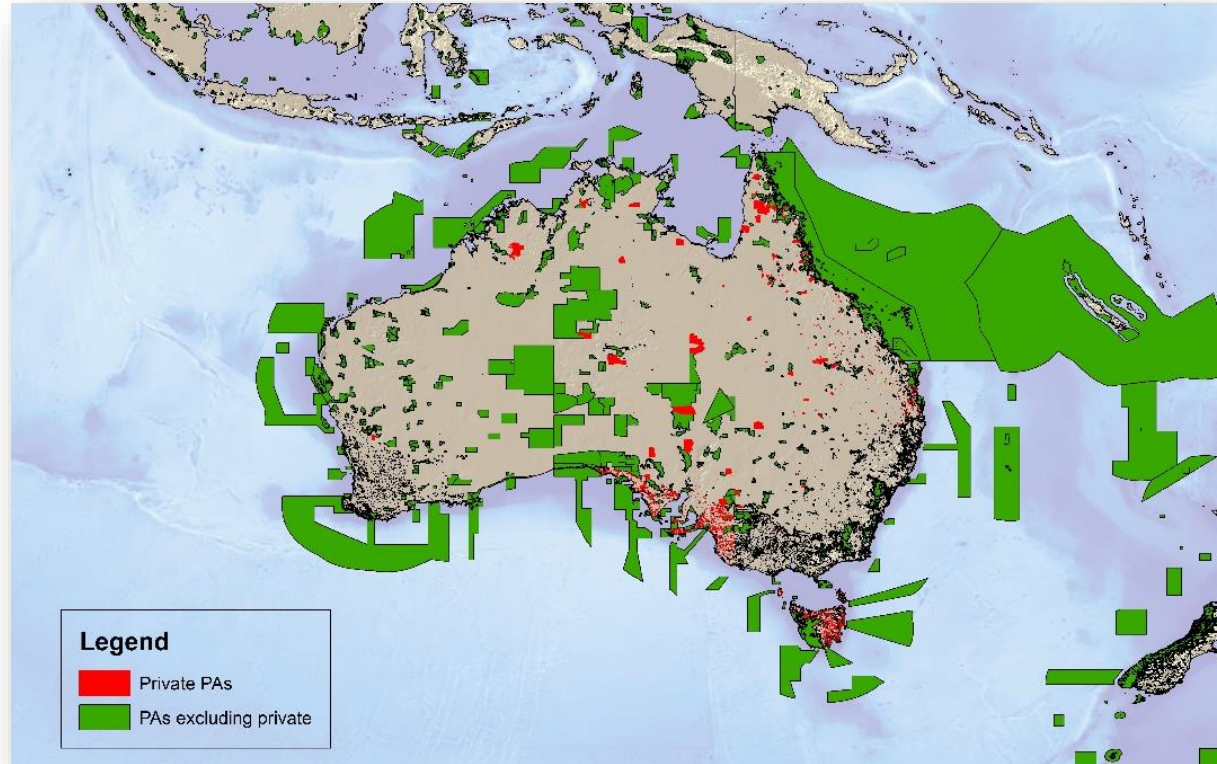
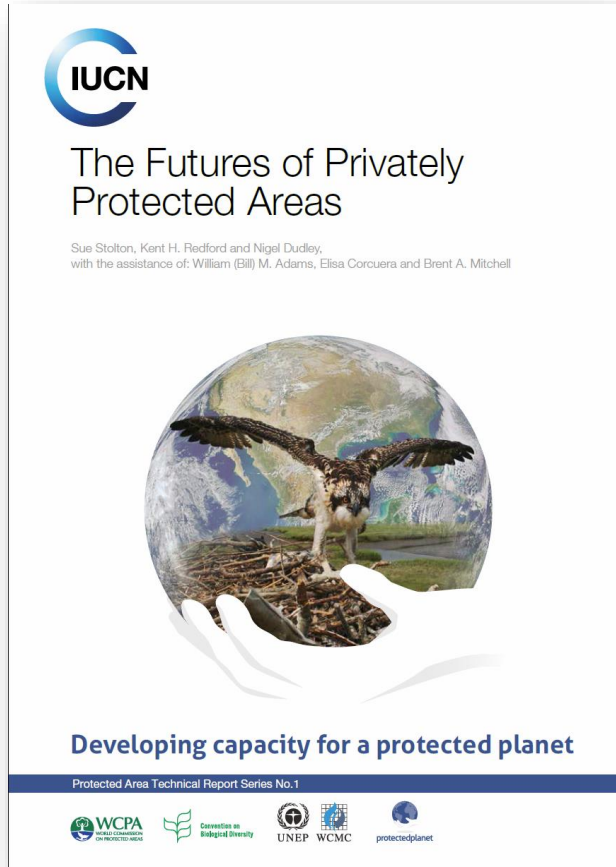
The ICCA Registry is a voluntary, peer-reviewed avenue for both indigenous peoples and communities and the international conservation community to register and protect the multiple values of ICCAs and highlight their contribution to conservation around the world. [Learn more](#)

Latest case study

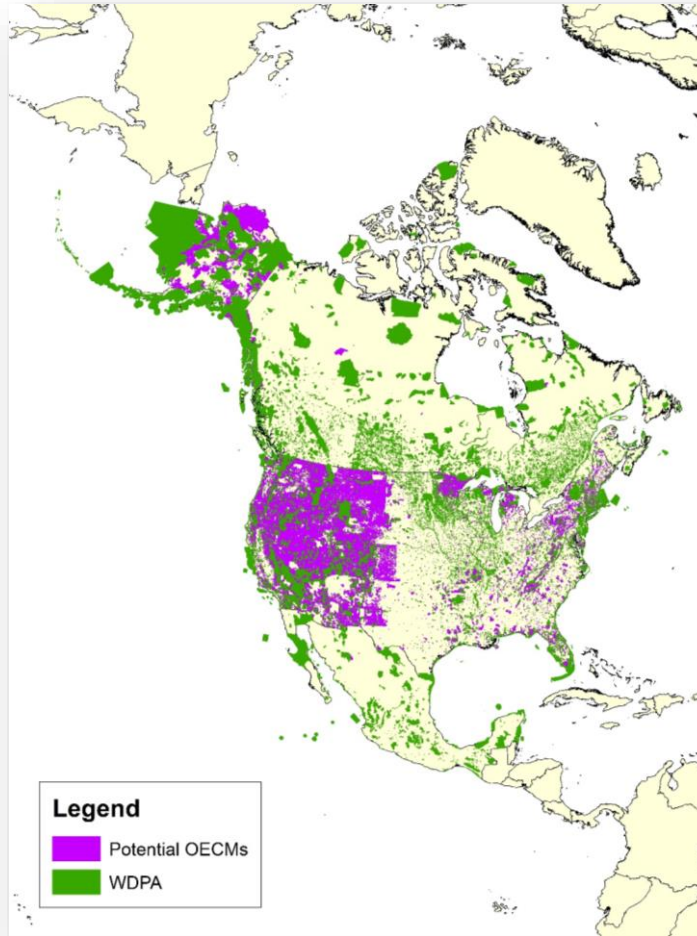
Paruku Indigenous Protected Area
Australia

[Discover the case study](#)

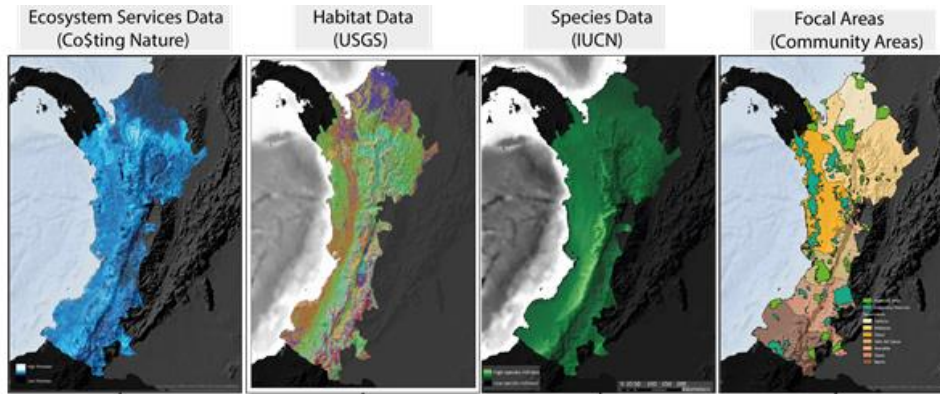
Privately Protected Areas



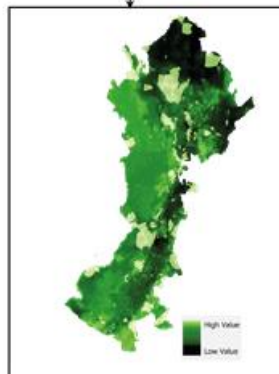
“other effective area based conservation measures” [OECM]



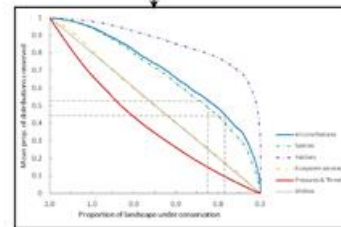
Landscape planning and connectivity



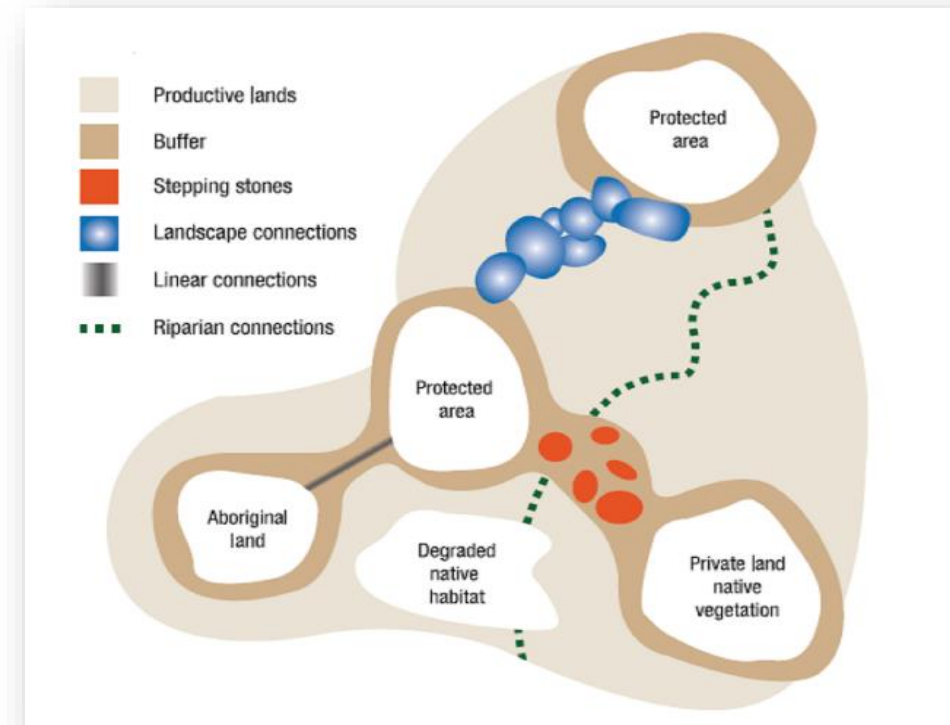
ZONATION MODEL



Output 1: Complementarity-based ranking of landscape balancing all input data.



Output 2: Quantitative evaluation of input data's retention.



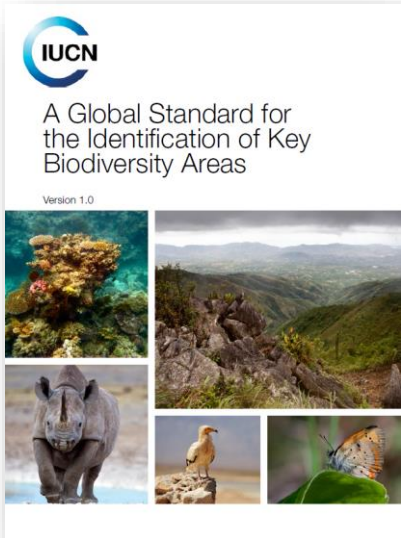
Key Biodiversity Areas

Sites that contribute to the global persistence of biodiversity

Meet one or more of 11 criteria, clustered into five categories:

- threatened biodiversity
- geographically restricted biodiversity
- ecological integrity
- biological processes; and
- irreplaceability.

<20% overlap with protected areas, but coverage likely to expand



IUCN Green List of Protected & Conserved Areas

THE IUCN GREEN LIST GLOBAL STANDARD *Pillars and Principles*



Delivering Conservation Impact

Natural Values

Social Values

1. Designed
to Deliver

2. Equitably
Governed

3. Effectively
Managed

Protected Areas and “no-go”

Motion 26 at the IUCN World Conservation Congress (Sept 2016):



IUCN
World
Conservation
Congress
Hawai'i 2016

THE WCC CALLS ON GOVERNMENTS

- *To prohibit and regulate environmentally damaging activities in all IUCN PA categories*
- *To avoid environmentally damaging activities in ICCAs*
- *Not to de-gazette, downgrade, alter the boundaries of all IUCN PA categories to facilitate industrial activities*
- *To adopt and implement policies restricting damaging activities as part of regional development planning*

THE WCC CALLS ON THE BUSINESS COMMUNITY

- *To respect all IUCN PA categories as No Go Areas*

THE WCC URGES COMPANIES, PUBLIC SECTOR BODIES, FINANCIAL INSTITUTIONS, CERTIFICATION BODIES

- *Not to conduct, invest in or fund activities that negatively impact protected areas and areas of particular importance for biodiversity and ecosystem services*

Response of governments will be clearer after the Convention on Biological Diversity Convention of Parties (CBD CoP) discussions

Summary

Protected Areas area varied in how they are managed and governed, but they remain the cornerstone of all countries and territories conservation activity

Policy landscape for areas based conservation measures is changing:

- move to look at how much area is needed to deliver global goals for biodiversity and people
- protected and conserved areas, including connectivity areas

The effectiveness and equity of area based conservation activities are under increased scrutiny

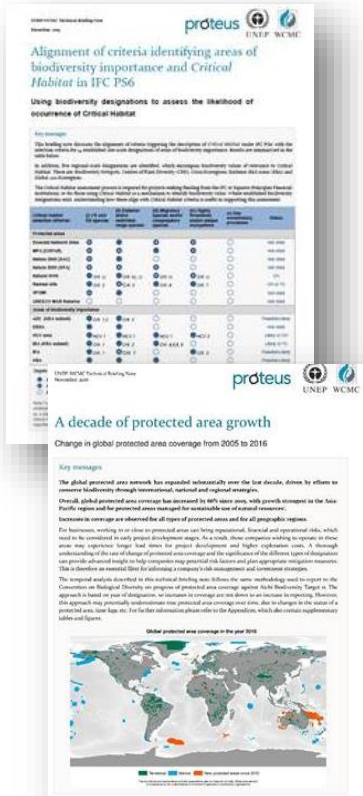
Further information

Proteus Global Biodiversity Agenda factsheet on '[Protected Areas Mythbusting](#)'

Proteus Technical Briefing Notes

- '[Change in global protected area coverage from 2005 to 2016](#)'
- '[Protected areas in IFC PS6](#)'

Webinar recordings and slides will be uploaded to the Proteus website: <http://www.proteuspartners.org/>





naomi.kingston@unep-wcmc.org

kerstin.brauneder@unep-wcmc.org

www.protectedplanet.net



protected
planet®

