

PROTEUS ANNUAL MEETING

13th – 14th June 2019, David Attenborough Building, Cambridge, UK



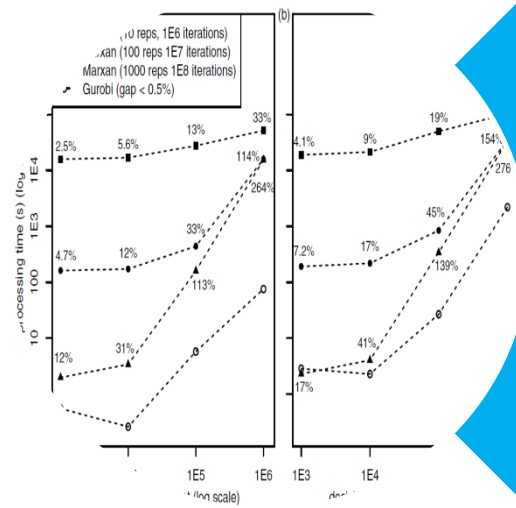
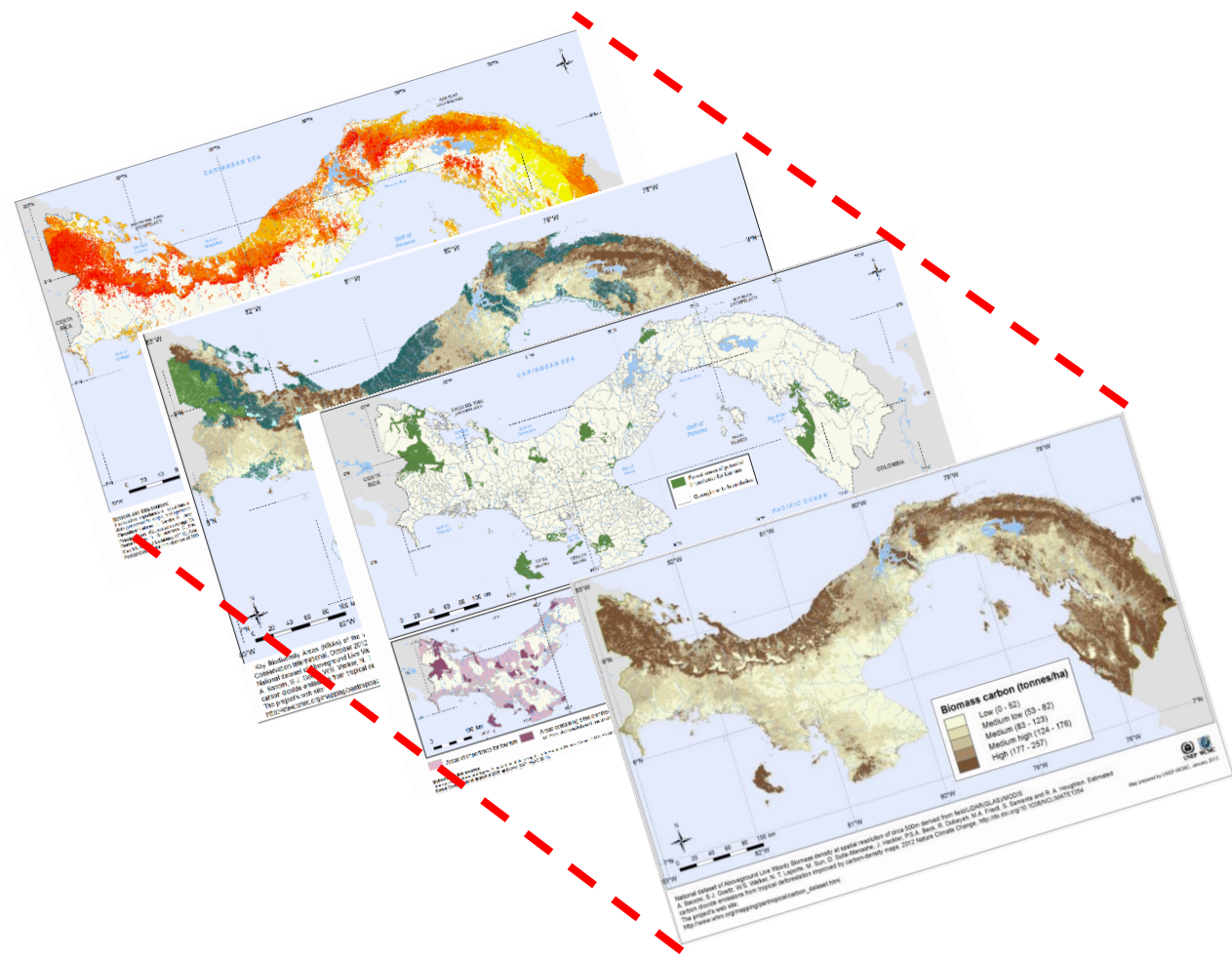
PLANNING FOR PLACES

Supporting area-based planning and integrated decision-making

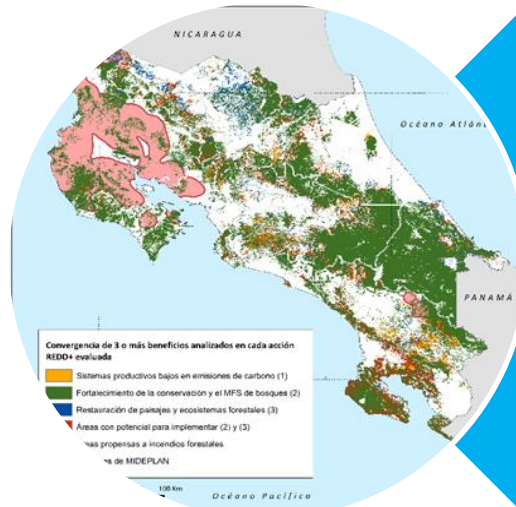
Lera Miles @lera_miles

Planning for Places

- For conservation
- Mainstreaming into wider planning



New methods and analysis



Applied tools, data & knowledge products



Build capacity to use the results

Landscape selection tool for investment decisions

- “Conflict” wildlife with economic potential
- Natural landscape
- Threatened with conversion
- Governance OK
- Moderate climate risk
- Transboundary preferred



© Roshan Shetty CC-BY-NC



© fabkiwi CC-BY-NC

Experimental Map Tool Version 0.1

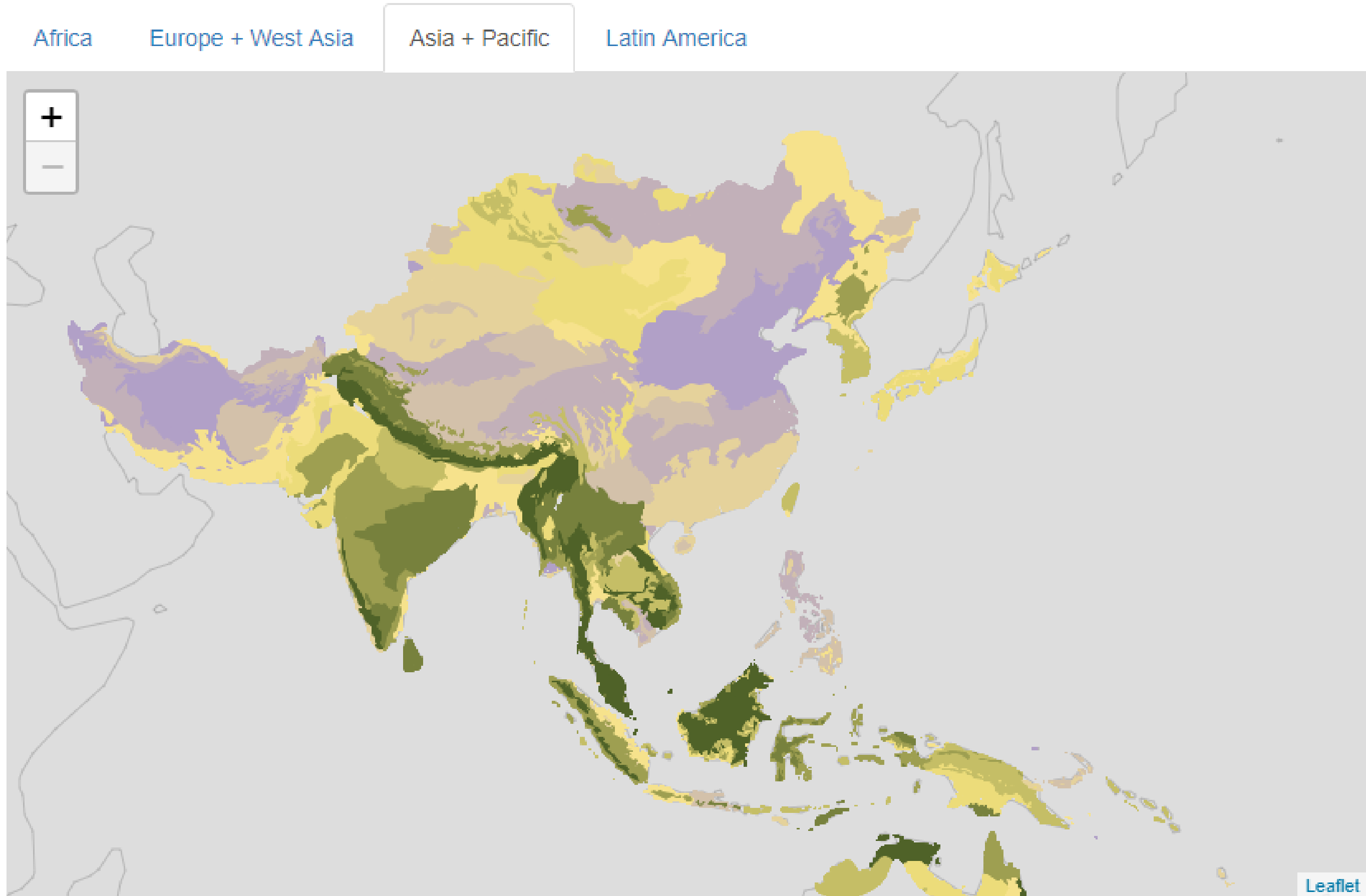
Species score weighting:
0.01 0.21 0.41 0.61 0.81 1
0.84

Naturalness weighting:
0.01 0.21 0.41 0.61 0.81 1
0.5

Threat weighting:
0.01 0.21 0.41 0.61 0.81 1
0.86

Governance risk weighting:
0.01 0.21 0.41 0.61 0.81 1
0.5

Climate risk weighting:
0.01 0.21 0.41 0.61 0.81 1
0.5



The boundaries and names shown and the designations used on maps do not imply official endorsement or acceptance by UN Environment or contributory organisations.

#WeCanMakeChange