

KEY BIODIVERSITY AREAS

Leo Murphy, Programme Officer, UN Environment World Conservation Monitoring Centre

Katie Leach, Senior Programme Officer, UN Environment World Conservation Monitoring Centre

The proteus partnership

- Launched in 2003 with five founding extractives industry members
- 2019: 12 extractives industry members
- Current phase: 2016–2020
- Three previous phases: 2003–2007, 2008–2012, 2013-2015



Goal

To improve biodiversity data and information

Objectives

- 1) Improve accuracy and completeness of the WDPA
- 2) Ensure data on biodiversity features are improved
- 3) Improve availability of coastal and marine data
- 4) Provide expertise and resources

Proteus tools at a glance



Biodiversity A-Z

- **Online glossary of terms**

www.biodiversitya-z.org



The Integrated Biodiversity Assessment Tool (IBAT)

- **Access to site- and landscape-scale datasets**

www.ibatforbusiness.org



Protected Planet

- **The online interface with the World Database on Protected Areas**

www.protectedplanet.net

OCEAN DATA VIEWER

Ocean Data Viewer and Ocean+ Data

- **Access to over 30 marine and coastal datasets**

<http://data.unep-wcmc.org>; data.oceanplus.org



Proteus website

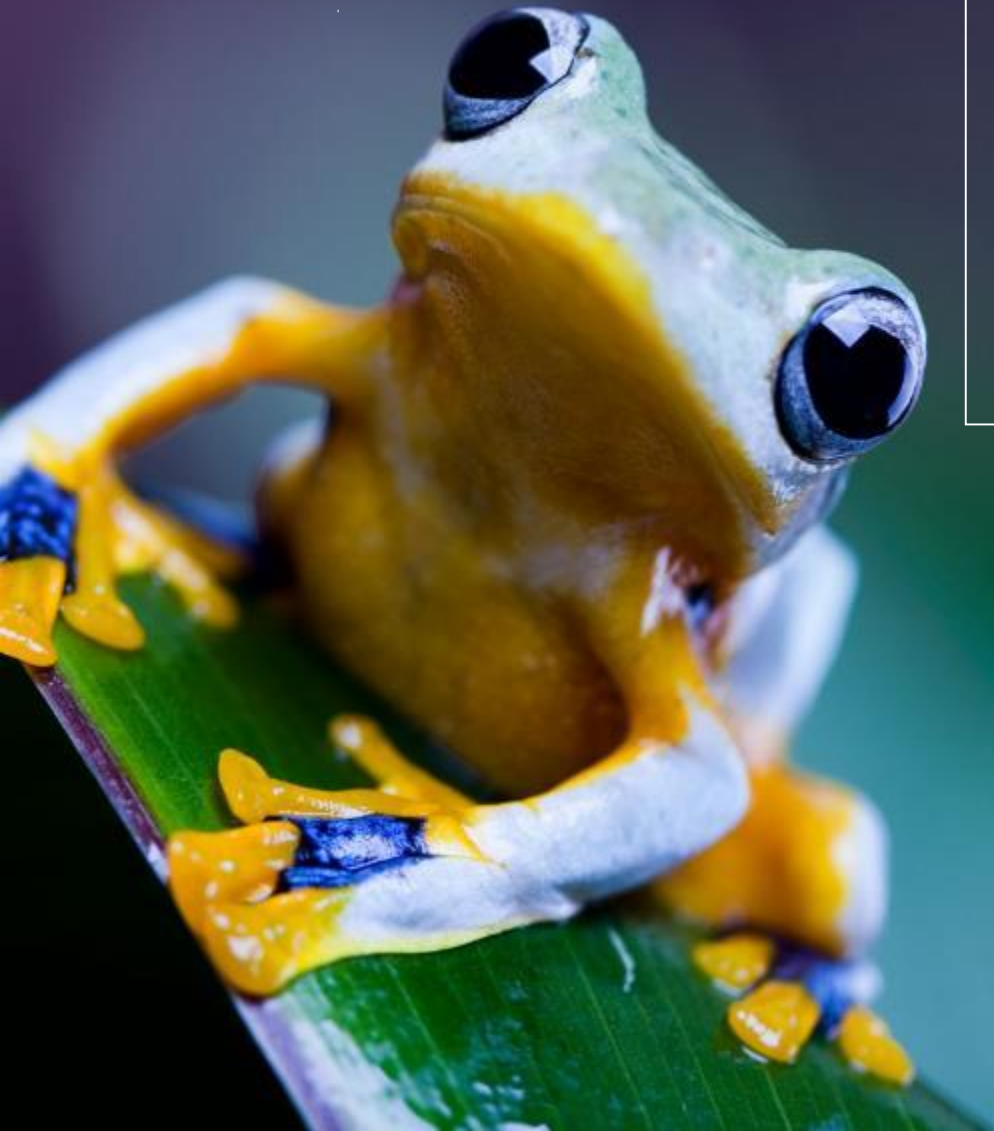
- **Access all information resources offered through Proteus**

www.proteuspartners.org

Overview

- Introduction
- The Key Biodiversity Areas Global Standard
- Guidelines for Business and Implications for Biodiversity Management
- Engaging with the Key Biodiversity Area Partnership
- Questions and Discussion





INTRODUCTION

Introduction

Key Biodiversity Areas

- 'Sites that contribute significantly to the global persistence of biodiversity'



Image on Pixabay by (clockwise from top left):12019; designerpoint; dimitrivetsikas1969; designerpoint; Garyuk31; falco

Introduction

Key Biodiversity Areas Partnership



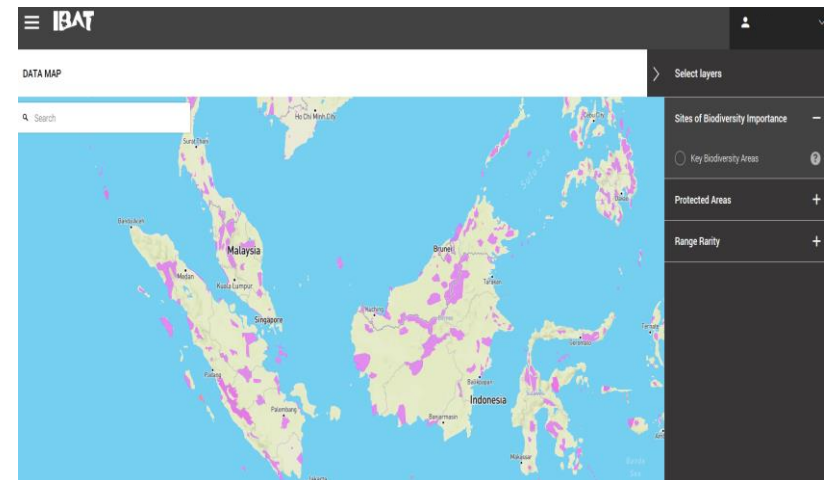
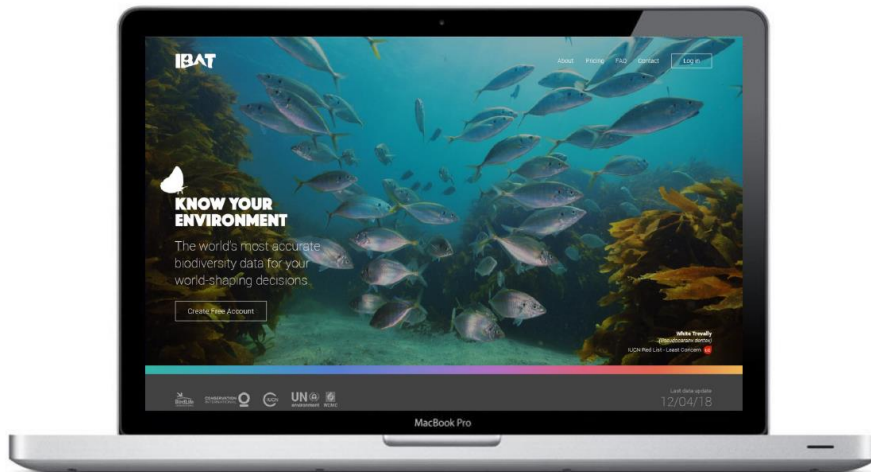
RAINFOREST
TRUST®



Introduction

Accessing data on Key Biodiversity Areas

- World Database on Key Biodiversity Areas
- Integrated Biodiversity Assessment Tool (IBAT)
- Data quality and data gaps for Key Biodiversity Areas
- Contributing data



Introduction

Key Biodiversity Areas in Numbers

- >16,000 Key Biodiversity Areas globally
- ~18% of Key Biodiversity Areas are marine
- ~20% are covered by Protected Areas and a further 45% have partial coverage.
- ~4% are Alliance for Zero Extinction sites
- ~84% are Important Bird and Biodiversity sites

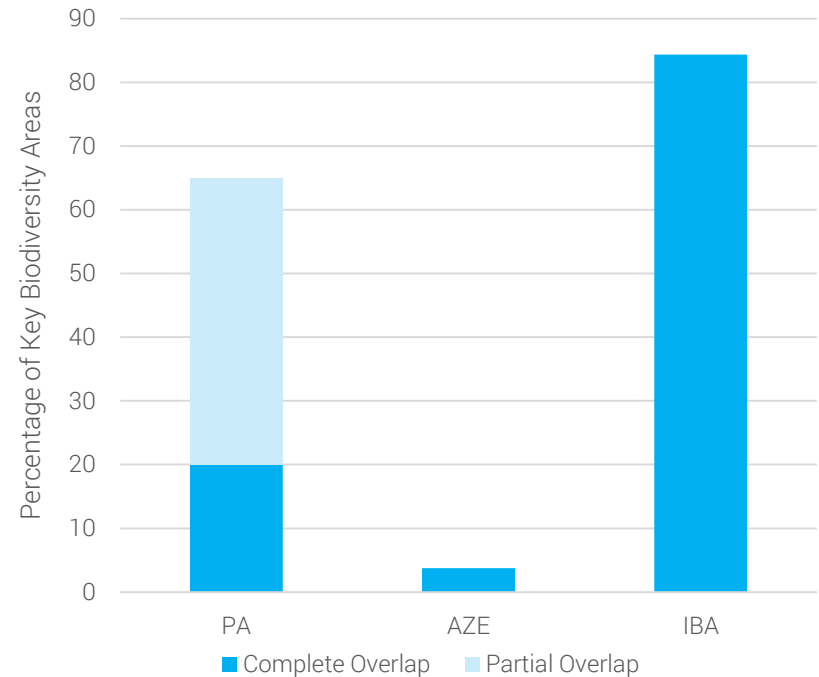


Figure 1: Percentage of Key Biodiversity Areas Overlapping with Protected Areas (PA), Alliance for Zero Extinction (AZE) and Important Bird and Biodiversity Areas (IBA)



THE GLOBAL STANDARD

The Global Standard

Introduction

IUCN conducted a “consultative process to agree a methodology to enable countries to identify Key Biodiversity Areas”

Aim

- To harmonise and support the identification of Key Biodiversity Areas globally

Objectives

- Builds on previous work (e.g. Important Bird and Biodiversity Areas)
- Consultative and science-based approach
- Freshwater, marine and terrestrial ecosystems



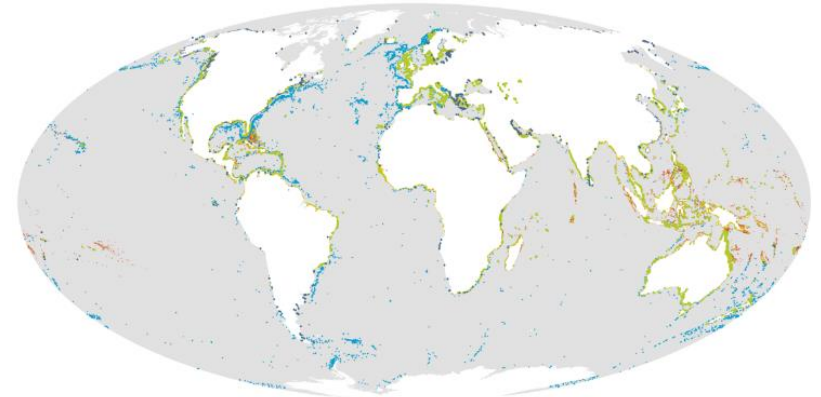
The Global Standard

Category	Criteria
A. Threatened Biodiversity	A1. Threatened species
	A2. Threatened ecosystem types
B. Geographically Restricted Biodiversity	B1. Individual geographically restricted species
	B2. Co-occurring geographically restricted species
	B3. Geographically restricted assemblages
	B4. Geographically restricted ecosystem types
C. Ecological Integrity	
D. Biological Processes	D1. Demographic aggregations
	D2. Ecological refugia
	D3. Recruitment sources
E. Irreplaceability through quantitative analysis	

The Global Standard

A1. Threatened Species

Threatened Status	% of population size	Reproductive units
CR & EN	$\geq 0.5\%$	≥ 5
VU	$\geq 1\%$	≥ 10
CR & EN (population size reduction)	$\geq 0.1\%$	≥ 5
VU (population size reduction)	$\geq 0.2\%$	≥ 10



A2. Threatened Ecosystem Types

Site holds one or more of the following:

- $\geq 5\%$ of the global extent of a globally critically endangered or endangered ecosystem
- $\geq 10\%$ of the global extent of a globally vulnerable ecosystem

E.g. Gnarled mossy cloud forest, Lord Howe Island, Australia

The Global Standard

B1. Individual geographically restricted species

Site holds:

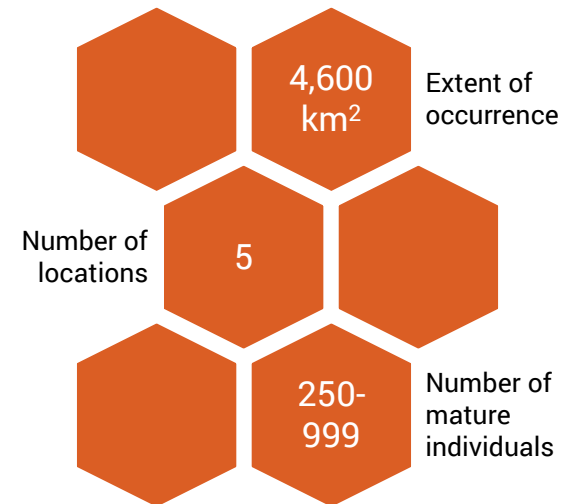
- a) $\geq 10\%$ of the global population size AND ≥ 10 reproductive units of a species



Yellow-throated Seedeater *Crithagra flavigula*

IUCN Red List Category: Endangered

BirdLife International 2016. *Crithagra flavigula*. The IUCN Red List of Threatened Species 2016: e.T22720127A94658707. Downloaded on 29 November 2018.



The Global Standard

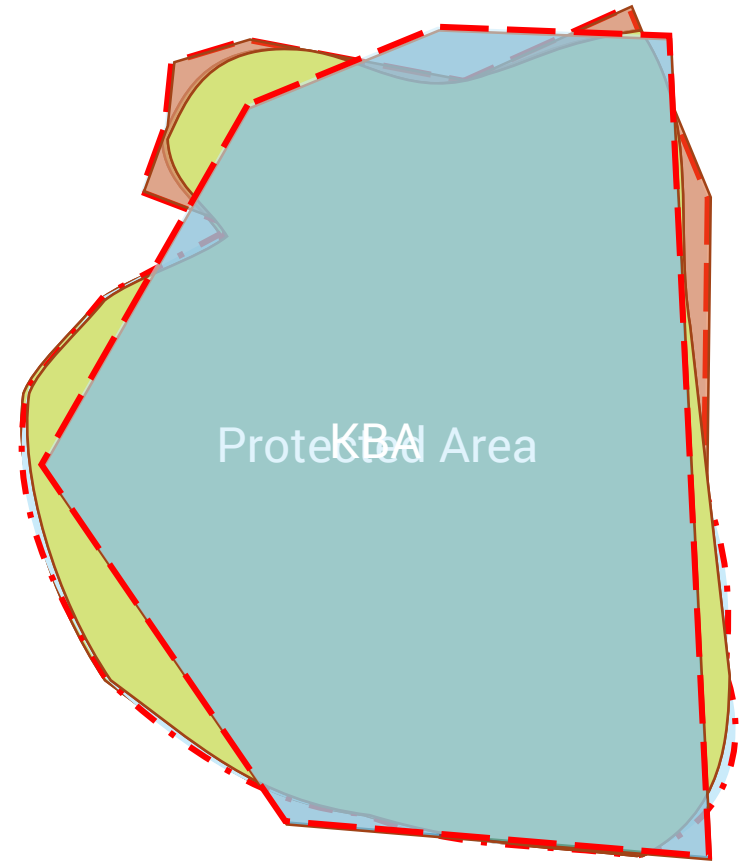
Delineation

Key Biodiversity Areas should be identified based on ecological data.

The boundaries should then be refined by:

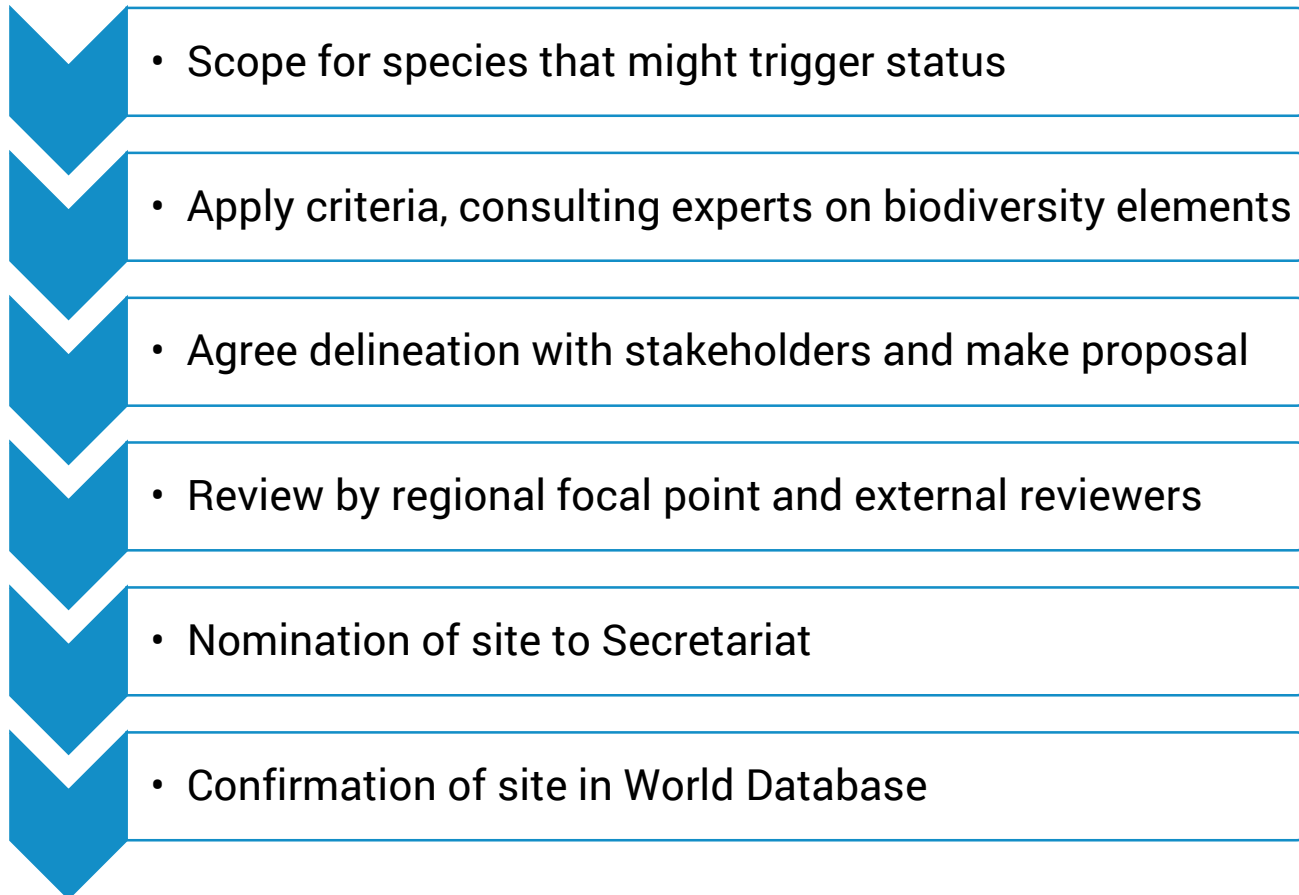
- Existing sites of importance to biodiversity
- Protected areas
- Land Management data

Aim is to delineate a site that meets ecological criteria while remaining practically manageable.



The Global Standard

Identifying Key Biodiversity Areas

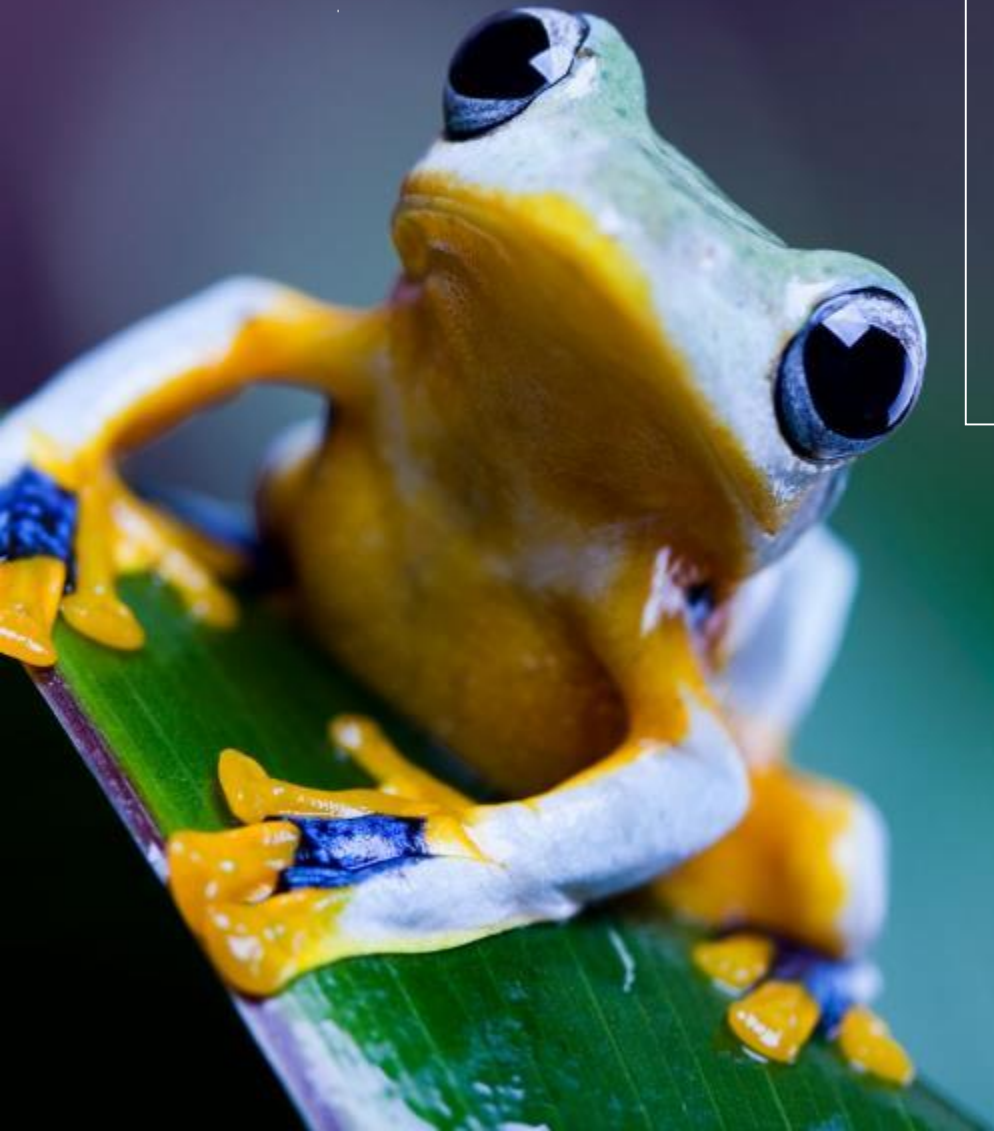


Consultation

Data

**Scientific
Review**

Documents

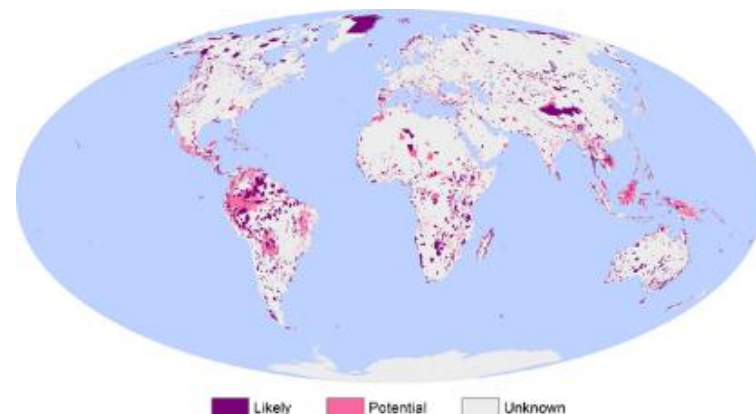


IMPLICATIONS FOR BIODIVERSITY MANAGEMENT

Implications for Biodiversity Management

Critical Habitat and IFC Performance Standard 6

- Alignment between Global Standard categories and IFC PS6 **'Critical Habitat'**
- Key Biodiversity Areas likely to qualify as **'Critical Habitat'** according to the revised Guidance Note 6 (November 2018)
- Included in **'internationally recognised areas of high biodiversity value'**



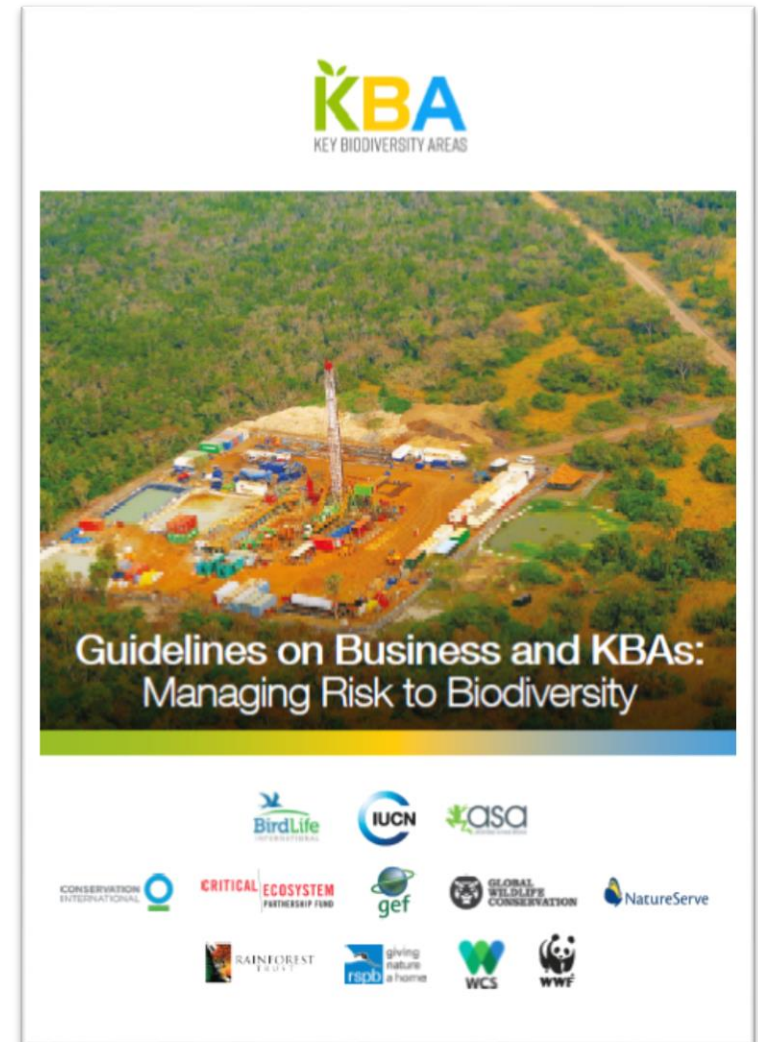
Brauneder KM et al. (2018). Global screening for Critical Habitat in the terrestrial realm: <http://journals.plos.org/plosone/article?id=10.1371/journal.pone.0193102>

Global Standard Category	Performance Standard 6 Critical Habitat Criteria
A. Threatened Biodiversity	1. Critically Endangered/Endangered Species AND 4. Highly Threatened and/or Unique Ecosystems
B. Geographically Restricted Biodiversity	2. Endemic/Restricted Range Species AND 4. Highly Threatened and/or Unique Ecosystems
D. Biological Processes	3. Migratory/Congregatory Species

Implications for Biodiversity Management

Guidelines on Business and Key Biodiversity Areas

- Developed by IUCN with the Key Biodiversity Areas Partnership in April 2018
- Applicable to all businesses impacting on Key Biodiversity Areas
- Used in a businesses area of influence across the whole life cycle of operations
- 15 guidelines
- Available from:
<https://portals.iucn.org/library/sites/library/files/documents/2018-005-En.pdf>



Implications for Biodiversity Management

Project Level Guidelines

- 10 guidelines
- Designed to support the mitigation hierarchy
- Specifically target trigger of Key Biodiversity Area
- Prioritize early action on minimisation
- Limit restoration and offsets
- Encourage effective monitoring
- Secure long-term future of mitigation

Avoid

- Identify and prevent impacts

Minimise

- Reduce duration and severity of impacts

Restore

- Restore damaged or degraded areas

Offset

- Compensate for impacts in areas outside of the impacted area in order to achieve no net loss

Implications for Biodiversity Management

Corporate Level Guidelines

- Five guidelines
- Report on Key Biodiversity Areas
- Target additional action including offsets for impacts elsewhere and corporate social responsibility
- Data sharing with Key Biodiversity Area Partnership
- Assess compliance with relevant schemes and policies



Implications for Biodiversity Management

Additional Resources

Key Biodiversity Areas website provides further resources on:

- Position of Key Biodiversity Areas in other contexts
- Potential mitigation measures for each criteria
- Case studies
- Guidance on the application of the Global Standard

Case Studies

Habitat restoration in limestone quarries



Quarry in Lengfurt, Germany © Hartwig Brönnner

Identifying mining sites close to KBAs



© Charlie Butt

Reptile conservation in the Caribbean



CEMEX tree nursery, Dominican Republic © Charlie Butt

Oil prospecting in Uganda



Murchison Falls, Nile River, Uganda © Rod Waddington

Screenshot taken from Key Biodiversity Areas website available at: <http://www.keybiodiversityareas.org/business-guidelines/case-studies>



ENGAGING WITH THE KEY BIODIVERSITY AREA PARTNERSHIP

Engaging with the Key Biodiversity Areas Partnership

Key Biodiversity Areas Consultative Forum

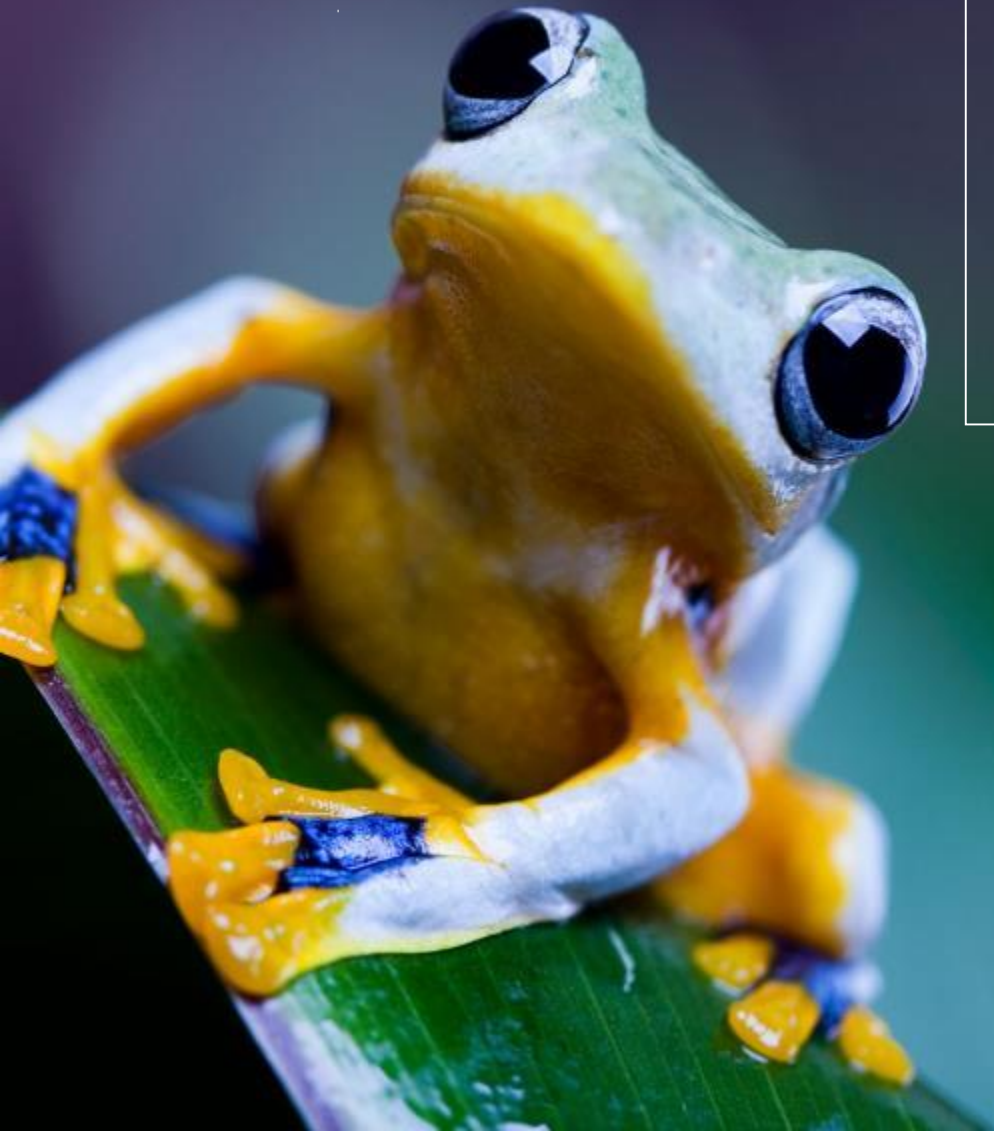
- Includes private sector and governmental end-users
- Keep informed about progress and plans in the implementation of the Global Standard
- Provide input and advice on the needs and challenges in the use and application of Key Biodiversity Areas data

For further information, please contact:

chair.consultative.forum@keybiodiversityareas.org

Provide Data and Propose Sites

- Monitoring data from sites in or near Key Biodiversity Areas can be used to assess trigger status, validate or establish new Key Biodiversity Areas



QUESTIONS AND DISCUSSION

Suggested discussion topics

- Do you currently consider Key Biodiversity Areas in relation to your operations?
- If so, do you collect data on Key Biodiversity Areas and their triggers?
- Have there been any the implications of the new Global Standard for Key Biodiversity Areas for your business?
- How will the new Guidelines on Business and Key Biodiversity Areas affect how you operate in or near Key Biodiversity Areas?



**UN Environment
World Conservation Monitoring Centre**

www.unep-wcmc.org
[@unepwcmc](https://twitter.com/unepwcmc)

Leo Murphy
Programme Officer
Leo.murphy@unep-wcmc.org