

# One Ocean Outputs







# critical marine ecosystem data portal



# coral disease database

# One Ocean Programme

Online dataset repository

The image shows a screenshot of an interactive world map. The map displays green and brown patches representing marine datasets. On the left, there are navigation controls including a compass and a vertical zoom slider. At the top right, there are buttons for 'Map', 'Satellite', 'Hybrid', and 'Terrain'. At the bottom left, there are checkboxes for 'Coral', 'Mangrove', and 'Seagrass', all of which are checked. The map includes labels for various countries and oceans. In the bottom right corner of the map area, it says 'Map data ©2009 Europa Technologies - Terms of Use'. The Google logo is visible in the bottom left corner of the map area.

## Our Marine Datasets

### WDPA-Marine

The World Database on Protected Areas–Marine (WDPA–Marine) is dedicated to pr... [more..](#)

Downloads available

### Seagrass Atlas

This dataset underpins the World Atlas of Seagrasses, a collaboration of more... [more..](#)

Downloads available

### About this site

[One Ocean Programme](#) at [UNEP-WCMC](#) seeks to synthesise, analyse and disseminate marine and coastal biodiversity knowledge.



We currently offer 4 datasets for viewing and download, and last updated our



POWERED BY Google  
 Coral  Mangrove  Seagrass

## Our Marine Datasets

### WDPA-Marine

The World Database on Protected Areas–Marine (WDPA–Marine) is dedicated to pr... [more..](#)

Downloads available  
[Shapefile](#) [WMS](#)

### Seagrass Atlas

This dataset underpins the World Atlas of Seagrasses, a collaboration of more... [more..](#)

Downloads available  
[Shapefile](#)

### Coral Disease Dataset

The Global Coral Disease Database is a collaborative project between UNEP–WCM... [more..](#)

Downloads available  
[Shapefile](#) [WMS](#) [WFS](#) [Metadata](#)

### Mangrove

the most up to date data for the distribution of mangroves [more..](#)

Downloads available  
[Shapefile](#)

### About this site

[One Ocean Programme](#) at [UNEP–WCMC](#) seeks to synthesise, analyse and disseminate marine and coastal biodiversity knowledge.



We currently offer 4 datasets for viewing and download, and last updated our holdings on December 2nd, 2009 09:43.

2 people have used this site to download our marine datasets.

For more information on the One Oceans team, [click here](#).

Welcome to the

## Global Coral Disease Database

The GCDD aims to provide the most up to date information on coral disease across the world. We also strive to encourage best practice in the area of coral disease monitoring.

Powered by:



UNEP



WCMC



NOAA

### Investigate Diseases

Navigate and learn more from our realtime interactive coral disease data.



### Country information

Explore the country level statistics the coral reef disease database can provide.



### Field Guides

Our field guides allow easy identification of a wide range of coral diseases.



### Contribute

Identified a disease? Find out how you can contribute to the disease database.



### Coral Disease



Coral disease has a major impact on Caribbean reefs, where 80% of coral has been lost to disease in the last 20 years. On the Great Barrier Reef, the Long-term Monitoring Program (run by the Australian Institute of Marine Science and supported by CRC Reef) has found an increase in coral disease on surveyed reefs over the last five years. However, only about seven diseases have been recorded from corals on the Great Barrier Reef and disease is not considered a major threat to the Reef.

Global Disease Records

3,600



### Global disease records

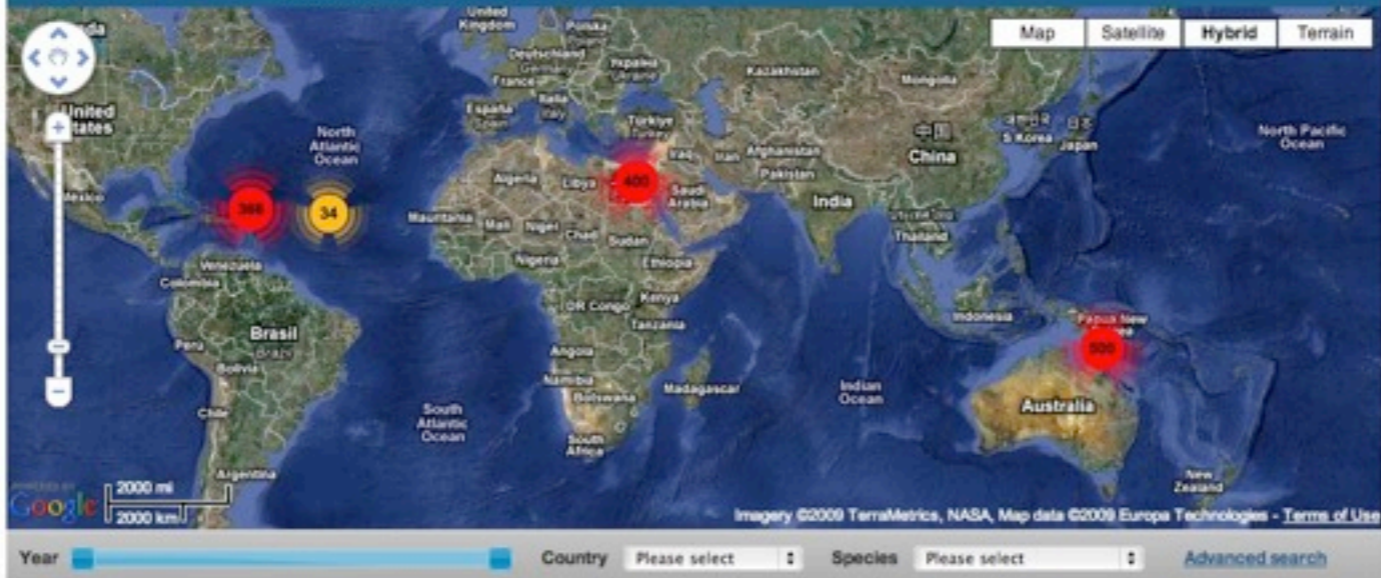
# 65759

• from 1300 transects

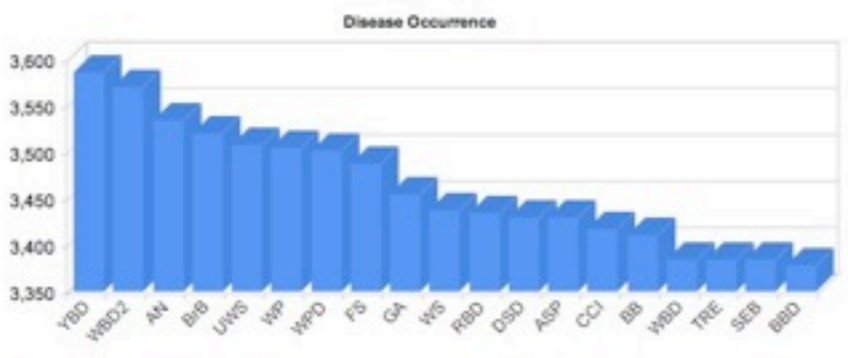
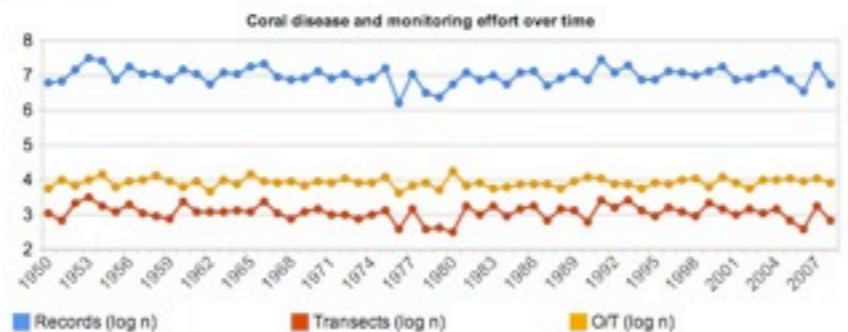
Global Prevalence

Species affected

Report to the community



### Statistics



### Transect detail

Name	Colonies Sampled	Sampling Date	Country
<a href="#">Port Thelmaburgh</a>	30	2005	Jamaica

### Total disease records

65759

from 1300 transects

### Prevalence

83.5%

what's this?

### Species affected

22

what's this?

### Download Report



### Request Data

Enter your email:

We will contact the data providers on your behalf.

look at trends

**GCDD** Global Coral Disease Database

Explore Field guide Contribute

Map Satellite Hybrid Terrain

Imagery ©2009 TerraMetrics, Map data ©2009 Europa Technologies - Terms of Use

< back to search

---

**Diseases recorded in South Melliefurt on January 30, 1996**

**Disease Records**

Disease	Records
WPD	2
ASP	2
YBD	1
UWS	1
SEB	1

**Distribution of disease across affected species**

Species	WPD	ASP	YBD	UWS	SEB
Acropor...	1	1	0	0	0
Acropor...	0	0	1	0	0
Oculini...	0	0	1	0	0
Dendrop...	0	0	0	1	1
Caryoph...	0	0	0	0	1

---

**Transect detail**

Transect type	Belt transect
Expert transect	no
Secchi disk reading	2.8
Depth	3m
Temperature at depth	4.1C
Notes	Hic rerum aut magnam corrupti qui qui ducimus rem ipsam dolorum. Qui ut ut uellit uoluntatem uero uoluntatem uero uoluntatem uero uero

---

**Total diseases at South Melliefurt**

**7**

**Prevalence**  
**116.7%**  
[what's this?](#)

**Species affected**  
**5**  
[what's this?](#)

---

**Download Report**

PDF 1,2,3  
CSV 1,2,3

---

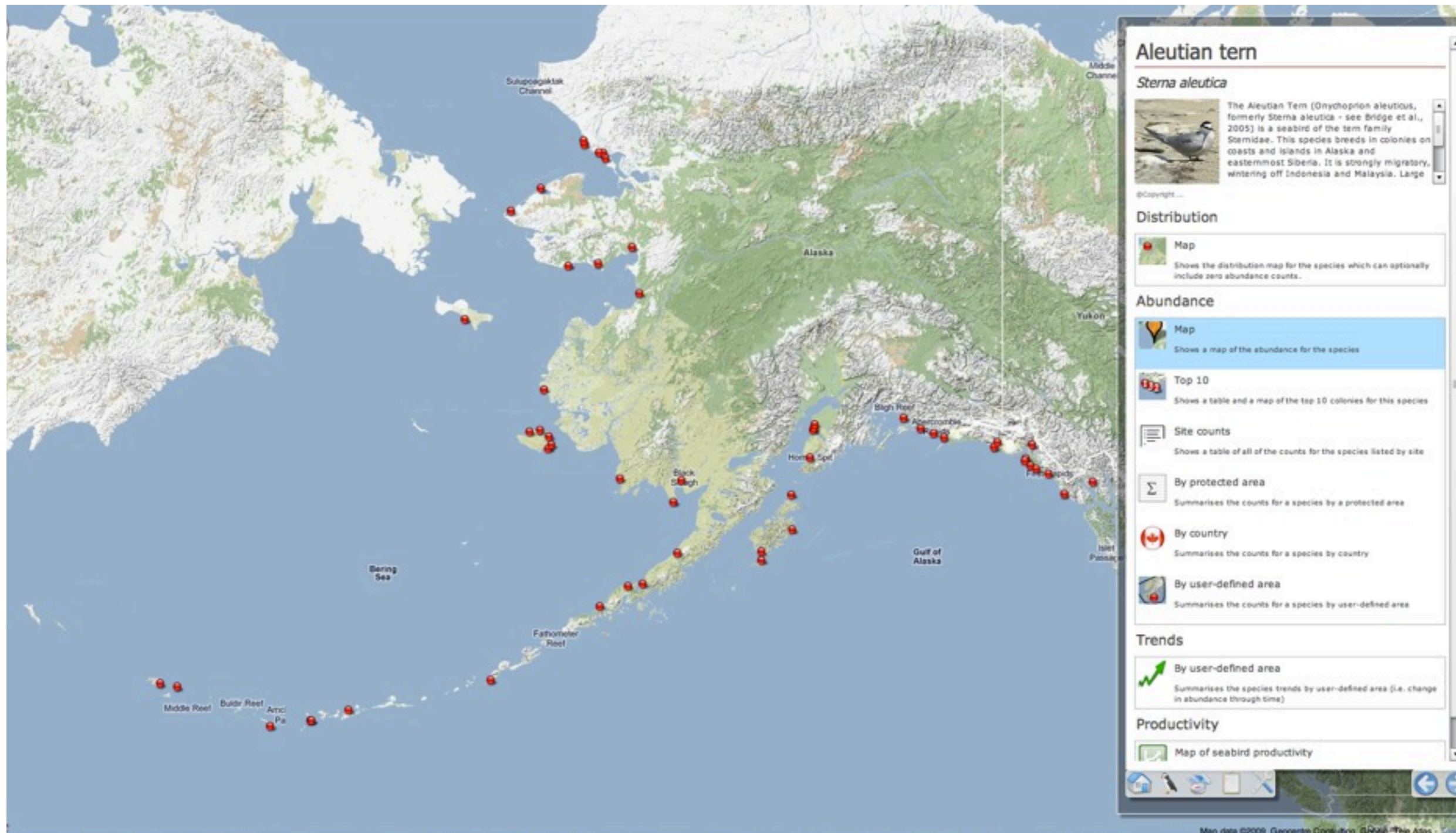
**Request Data**

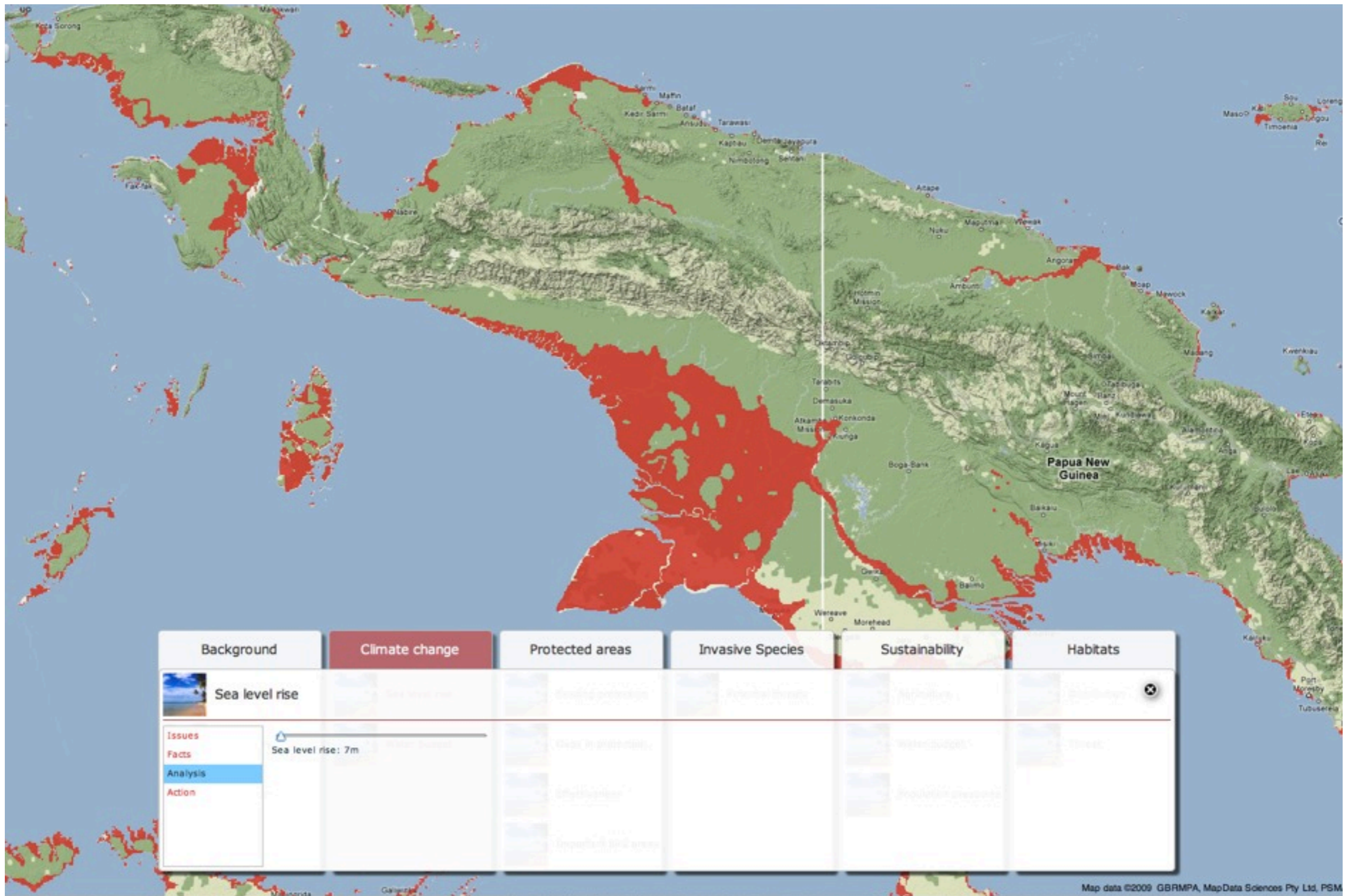
Enter your email:

[We will contact the data providers on your behalf. Click here for more information.](#)

Tools for the community

global islands database





# Linking data to models

[wdpa-marine.org](http://wdpa-marine.org)

zoom terrain | satellite | map

search filter about help fullscreen

WORLD [Select a country to explore it](#)

## Explore the World Database on Marine Protected Areas

The WDPA-Marine is dedicated to providing the most comprehensive set of marine protected areas (MPAs) data available. With less than one percent of the oceans under legal protection, it is essential to maintain a dataset that focuses on MPAs and representation of the diverse species and habitats found in the marine environment.

### WHERE TO START?



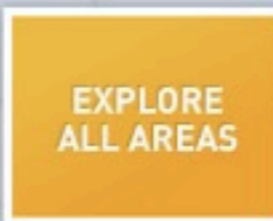
BACALAR CHICO MARINE RESERVE



PEMBA CHANNEL CONSERVATION AREA



GALAPAGOS ISLANDS



Did you know that...  
**only 0.7% of oceans are protected**

**0.7%**

### Legend

MARINE AREAS

NATIONAL

INTERNATIONAL

Powered by



beta version  
feedback

POWERED BY DEVELOPED BY

Map data ©2009 Europa Technologies - [Terms of Use](#) close

### WHAT'S NEW

#### NEW WDPA-MARINE WEBSITE LAUNCHED

At the International Marine Conservation Congress (19-24th May 2009) and on World Oceans Day (8th of June).  
*View the press release below:*  
[\[English\]](#) | [\[Français\]](#) | [\[Español\]](#)

#### FREQUENTLY ASKED QUESTIONS

Find answers to protected areas questions [here](#).

#### WATCH THIS SPACE

For new developments such as an expanded tools library and new data.

### TOOLS

#### MARINE PROTECTED AREA PLANNING RESOURCES

Relevant publications, Toolkits, Applied planning tools and Web resources.

[VIEW NOW](#)

zoom terrain | satellite | map search filter about help fullscreen

WORLD Select a country to explore it

**WORLD STATS**

TOTAL MARINE PROTECTED AREAS  
**>5000**  
90% NATIONAL | 10% INTERNATIONAL

NAVIGATE  
Countries Areas

**0.7%**

by country coverage  
 by number of areas

Map data ©2009 Europa Technologies - Terms of Use

## WHAT'S NEW

### NEW WDPA-MARINE WEBSITE LAUNCHED

At the International Marine Conservation Congress(19-24th May 2009) and on World Oceans Day (8th of June).

View the press release below:  
[\[English\]](#) | [\[Français\]](#) | [\[Español\]](#)

### FREQUENTLY ASKED QUESTIONS

Find answers to protected areas questions [here](#).

### WATCH THIS SPACE

For new developments such as an expanded tools library and new data.

## TOOLS

### MARINE PROTECTED AREA PLANNING RESOURCES

Relevant publications, Toolkits, Applied planning tools and Web resources.

[VIEW NOW](#)

zoom terrain | satellite | map

search filter about help fullscreen

WORLD MEXICO Click on an area to see details

**MEXICO**

COUNTRY PROTECTED AREAS

# 118

TERRITORIAL SEAS COVERED BY PA

## 13.99%

WDPA-MARINE LAYERS

- Coral (1,780.00 km<sup>2</sup>)
- Mangroves (9,246.71 km<sup>2</sup>)
- SeaGrass
- Saltmarsh

Map data ©2009 LeadDog Consulting, Google, INEGI, Europa Technologies, TomTom

**WHAT'S NEW**

**NEW WDPA-MARINE WEBSITE LAUNCHED**

At the International Marine Conservation Congress(19-24th May 2009) and on World Oceans Day (8th of June).  
View the press release below:  
[\[English\]](#) | [\[Français\]](#) | [\[Español\]](#)

**FREQUENTLY ASKED QUESTIONS**

Find answers to protected areas questions [here](#).

**WATCH THIS SPACE**

For new developments such as an expanded tools library and new data.

**TOOLS**

**MARINE PROTECTED AREA PLANNING RESOURCES**

Relevant publications, Toolkits, Applied planning tools and Web resources.

[VIEW NOW >](#)

zoom terrain | satellite | map

area details about help fullscreen

WORLD > MEXICO > ISLA GUADELOUPE



### ISLA GUADELOUPE, MEXICO [MX]

#### WDPA LAYERS

- Coral
- Mangroves
- SeaGrass
- Saltmarsh

#### FROM THE WEB

- Wikipedia Articles
- Photos
- Videos

beta version  
feedback

POWERED BY DEVELOPED BY

Map data ©2009 INEGI - [Terms of Use](#)

## WHAT'S NEW

### NEW WDPA-MARINE WEBSITE LAUNCHED

At the International Marine Conservation Congress(19-24th May 2009) and on World Oceans Day (8th of June).  
*View the press release below:*  
[\[English\]](#) | [\[Français\]](#) | [\[Español\]](#)

### FREQUENTLY ASKED QUESTIONS

Find answers to protected areas questions [here](#).

### WATCH THIS SPACE

For new developments such as an expanded tools library and new data.

## TOOLS

### MARINE PROTECTED AREA PLANNING RESOURCES

Relevant publications, Toolkits, Applied planning tools and Web resources.

[VIEW NOW >](#)