

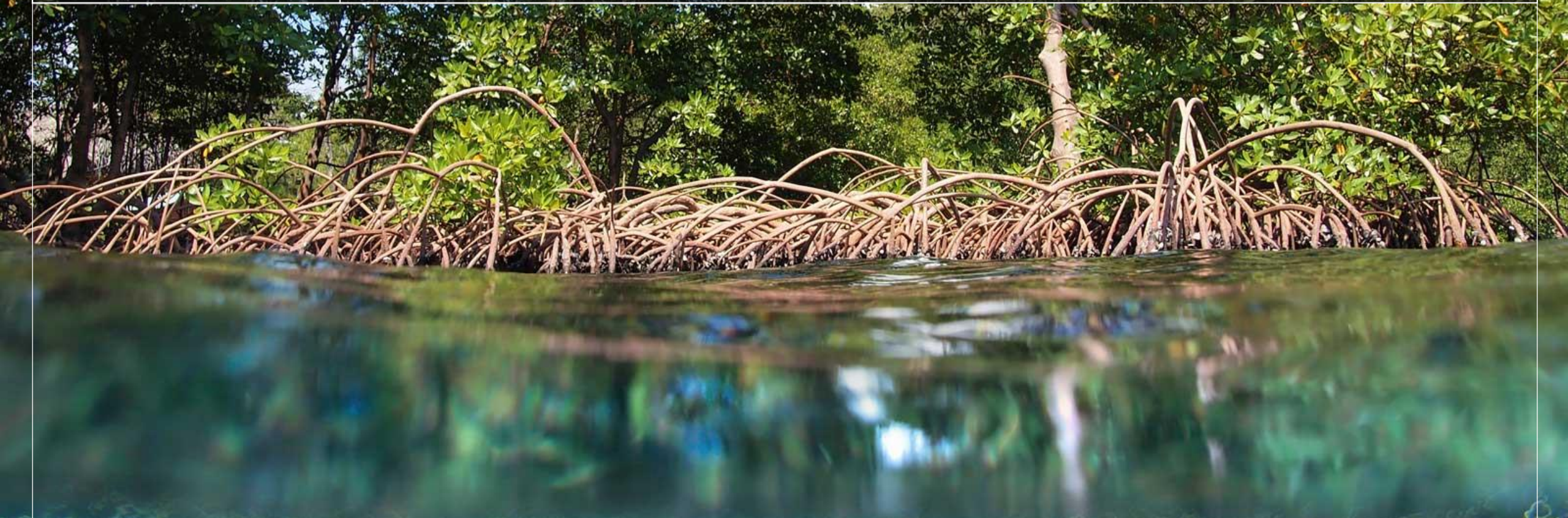


United Nations Environment
World Conservation Monitoring Centre

PROTEUS ANNUAL MEETING

20th – 22nd June 2018, David Attenborough Building, Cambridge, UK





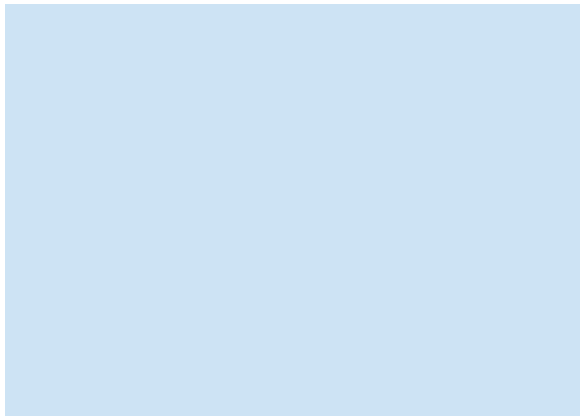
BIODIVERSITY MANAGEMENT POST 2020

IPIECA



CBD COP14 2018

Why engage, and how?



THE GLOBAL OIL AND GAS
INDUSTRY ASSOCIATION
FOR ENVIRONMENTAL
AND SOCIAL ISSUES

www.ipieca.org

Why engage with CBD now?

We are on the agenda in 2018:

- Mainstreaming Biodiversity in Energy, Mining, Manufacturing, Infrastructure and Health

The new 2030 targets may well be relevant for our industry

- In 2020 the “Aichi” targets will be evaluated and updated

Mainstreaming biodiversity in energy, mining, infrastructure...

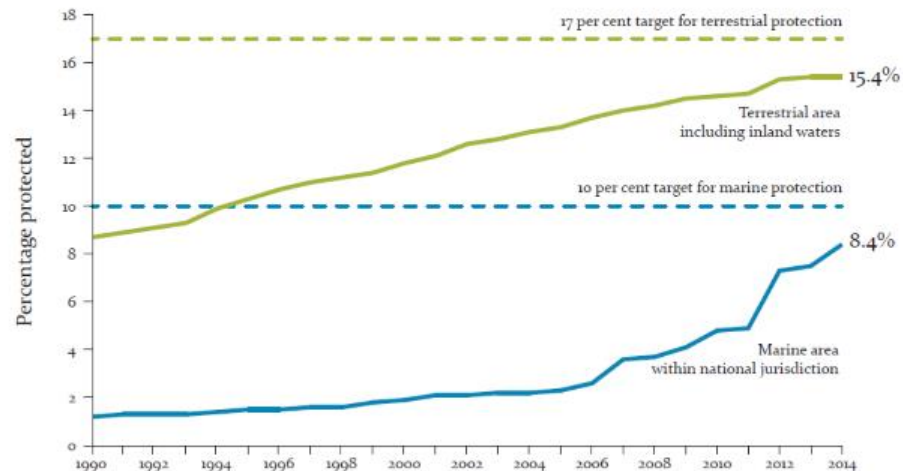
- Extensively debated topic at SBSTTA in December 2017
- Governments are seeking good practices to mainstream biodiversity.
- Key challenge is to achieve transformational change.
- Some key concerns mentioned by government parties:
 - What is preventing mainstreaming, i.e. why are companies not taking biodiversity into account?
 - How to improve Impact Assessment, Strategic Environmental Assessment, Land-use Planning?
 - Ask for capacity building in developing countries
 - Ask for better data and information to inform decisions
 - How to take into account the needs of Indigenous Peoples and Local Communities?
 - How to balance Biodiversity concerns with Economic Development and Climate Change considerations?
- NGO's expressed that they feel the discussions are not demanding enough and will not drive transformation

2020 versus 2030, e.g. Protected Areas

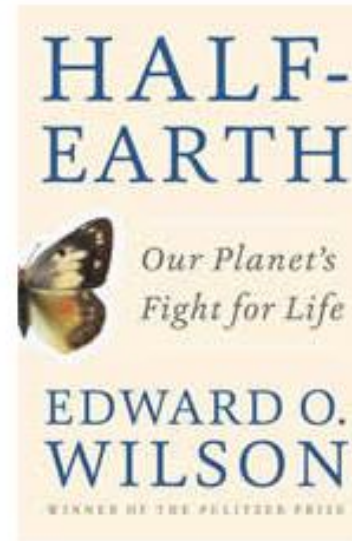
Aichi-targets 2020:
17% terrestrial, 10% coastal

2030 targets:
to be set in 2020

Percentage of all terrestrial and marine areas covered by protected areas (1990-2014)



Source: Protected Planet Report 2014



"If we conserve half the land and sea, 85% of species will be protected from extinction."

IPIECA engagement activities

- **October:** WCMC workshop on mainstreaming (input for SBSTTA)
- **December:** SBSTTA meeting (observer/ panel in side event with WCMC)
- **June:** Expert meeting in Egypt – participate/present **NOW**
- **July :** SBI meeting (observer/ potential side-event via CSBI)
- **Fall:** Develop key messages, brochure, presentations for COP
- **November:**
 - High-level segment of CBD
 - Business and biodiversity forum
 - COP (with potential side-event)
- **Lead-up to 2020:** keep engaged with the CBD process?
- 2020 next CBD COP on new 2030 targets

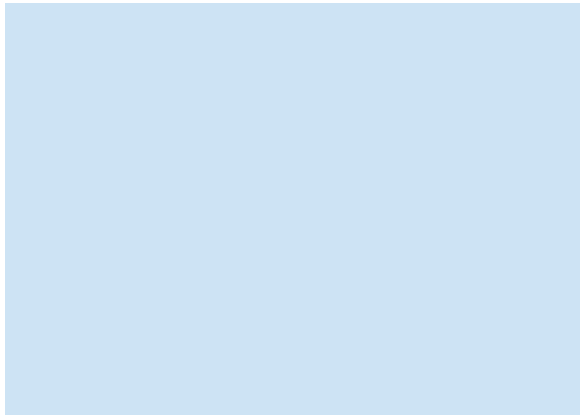
Key messages

1. The O&G industry takes a risk-based approach to managing biodiversity and ecosystem services.
2. The Mitigation Hierarchy (avoid, minimise, restore, offset) is used as a framework for management.
3. There are a number of key examples demonstrating this approach.
4. The O&G industry can play a role in achieving global conservation goals working with governments.

IPIECA



Background



THE GLOBAL OIL AND GAS
INDUSTRY ASSOCIATION
FOR ENVIRONMENTAL
AND SOCIAL ISSUES

www.ipieca.org

What is the Convention on Biological Diversity

- UN Convention – 1 of 3 Rio conventions (Climate Change, Desertification)
- 196 countries (not USA, North-Korea, Vatican City)
- Vision 2050: Living in harmony with nature
- Strategic Plan 2011 – 2020 (Aichi Targets, e.g. protected areas)
- Key workstreams:
 - Global Biodiversity Outlook
 - Clearing-house for biodiversity information and best practices
 - Genetically Modified Organisms (Cartagena Protocol)
 - Access to genetic resources (Nagoya Protocol)
 - National Biodiversity Strategic Action Plans (NBSAPs) and Reports (NR)
 - Role of Indigenous Peoples and Local Communities in preserving nature
 - Mainstreaming Biodiversity in various sectors of the economy
- Some basic practices:
 - Consensus based decision making
 - Countries maintain their sovereign powers
 - Proposing regulations is not top of mind
 - Environment is as important to governments as it is to oil & gas companies

Developing BESWG messaging

We have many existing sources of information... 1/4

BES Fundamentals:

- Shell's global approach to BES management (Prac. #1)
- ExxonMobil – piloting improved marine communication on Alaska's North Slope (Prac. #2)
- Early and cross-company stakeholder engagement – Repsol's experience (Prac. #2)
- Total EP Libya – biodiversity baseline in a desert milieu: Libya's Murzuq basin, North Africa (Prac. #3)
- Repsol – ecosystem services review in the Amazonian rainforest (Prac. #4)
- Over mountain and desert – the PERU LNG approach to simplifying BES management across complex geographies (Prac. #5)
- Oil and gas activities in and around protected areas: BP's approach to BES management in the San Juan basin, Colorado (Prac. #5)
- Additional conservation action – supporting local community ice cellar construction on Alaska's North Slope (ExxonMobil, Prac. #5)
- Agip Oil Ecuador – effectiveness of integrated monitoring as part of a BES action plan: implementing good BES management practices in the sensitive environment of the Ecuadorian Amazon (Prac. #6)
- Yemen LNG (TOTAL Opco): the Balhalf Marine Biodiversity Monitoring Programme, Yemen, Indian Ocean (Prac. #6).

Developing BESWG messaging

We have many existing sources of information...2/4

CSBI Mitigation Hierarchy:

- Avoidance:

- Avoiding high biodiversity values in LNG site selection, Tanzania (BG Group and Statoil)
- Identifying and preserving high-quality habitat during oil and natural gas development in Colorado (BP)
- Avoiding disruption to caribou migration in Canada (mining)
- Gas pipeline design changed to avoid mammal migration route in Central Asia
- Micro-routing mine across roads in Chile to avoid sensitive habitats (mining).
- Avoiding impacts at a World Heritage Site in the Democratic Republic of Congo (Total)
- Infrastructure design for unconventional oil and gas avoids biodiversity impacts in North American grassland
- Innovative jetty design and construction avoids biodiversity impacts for LNG project (ExxonMobil)
- Scheduling to avoid impacts at a closed mine in France
- Research investments inform early avoidance of impacts on fauna in Peru (Repsol)
- Risk screening inform pipeline redesign in Azerbaijan (BP)
- Avoiding impacts on provisioning services through adaptive mine-path planning in Madagascar (mining)
- Avoiding coral reef encroachment during LNG development, Yemen (Total)
- Pipeline rerouting to avoid impacts on an endemic lichen in Namibia (mining)
- Using NNL forecasting to optimise investment in avoidance and calculate offset liability (mining)
- Managing indirect impacts by linking together social and environmental management plans (mining)

Developing BESWG messaging

We have many existing sources of information...3/4

CSBI Mitigation Hierarchy:

- Minimisation:
 - Minimizing impacts on coral reefs during LNG development, Yemen (Total)
 - Micro-routing the shore approach for an LNG pipeline in Papua New Guinea (ExxonMobil)
 - Early planning informs minimization measures for offshore Indonesia (BP)
 - Minimizing the impacts of gold mining at two special areas of conservation in Sweden (mining)
- Restoration:
 - Creating and managing wildflower meadows at a potash mine in the UK
 - Restoration of forest and upland grassland – the Agri River Valley, Italy (eni)
 - Seed storage facilitates restoration of native and endemic flora and fauna in Greece (mining)
 - Geomorphic reclamation lays the foundation for restoration in New Mexico (BHP Billiton)
- Offsets:
 - A marine offset for a coal terminal in Australia (BHP Billiton mining)

Developing BESWG messaging

We have many existing sources of information...4/4

Other case studies:

- Mini case studies from the World Parks Congress 2014 Protected Planet Pavilion Event (BP, Saudi Aramco, Shell, eni, Total, Chevron and Woodside)
- Environmentally sound extraction of natural oil resources in the German Wadden Sea (RWE Dea AG and Wintershall)
- Collaborating to improve reforestation and reclamation of boreal forests: OSLI case study
- Reducing risks to western gray whales: Sakhalin Energy case study
- Protecting marine turtles, cetaceans, and West African manatees as part of a Biodiversity Action Plan (Angola LNG, Chevron)
- Developing a Biodiversity Action Plan through an integrated and phased approach PERU LNG, Hunt Oil)
- Quarantine management for the Barrow Island gas processing plant and oilfield (Chevron)
- Uncharted wilderness: a detailed program for protecting biodiversity while developing LNG infrastructure (ExxonMobil)
- Tracking the winter range of the critically endangered western gray whale (ExxonMobil)
- Designing a Biodiversity Action Plan: Peru LNG case study
- Promoting the conservation of marine ecology by monitoring whale sharks and biodiversity in the Arabian Gulf (Maersk Oil Qatar)
- Ecosystem mapping: Repsol case study
- Demonstrating no net loss by integrating biodiversity management into operational practices based on sound science (eni)



United Nations Environment
World Conservation Monitoring Centre

PROTEUS ANNUAL MEETING

20th – 22nd June 2018, David Attenborough Building, Cambridge, UK

