

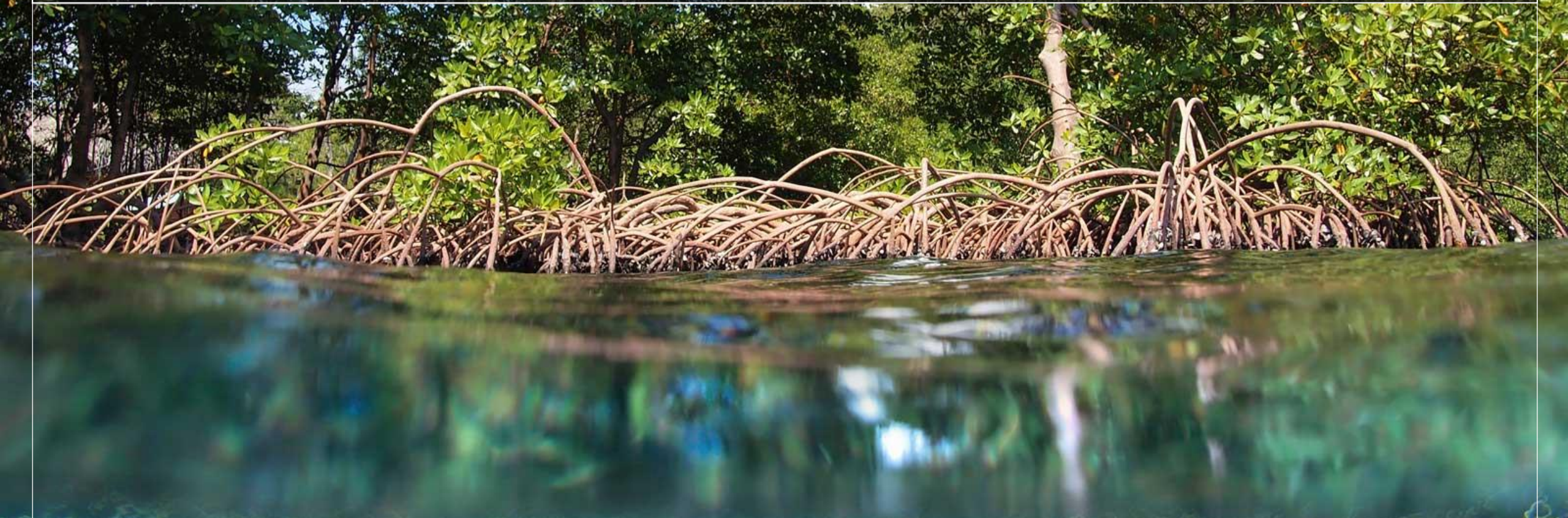


United Nations Environment  
World Conservation Monitoring Centre

# PROTEUS ANNUAL MEETING

20<sup>th</sup> – 22<sup>nd</sup> June 2018, David Attenborough Building, Cambridge, UK





## THE INTEGRATED BIODIVERSITY ASSESSMENT TOOL: RECAP ON EXISTING FUNCTIONALITY

Katie Leach



# INTRODUCTION



4 leading  
conservation  
organisations



CONSERVATION  
INTERNATIONAL



reports from over  
295,000 records in a  
single portal



data for every  
country/political  
territory



direct links to  
authority sources

# What data is in IBAT?



**Protected Areas**

225,538 records

March 2018



**Key Biodiversity Areas**

15,485 records

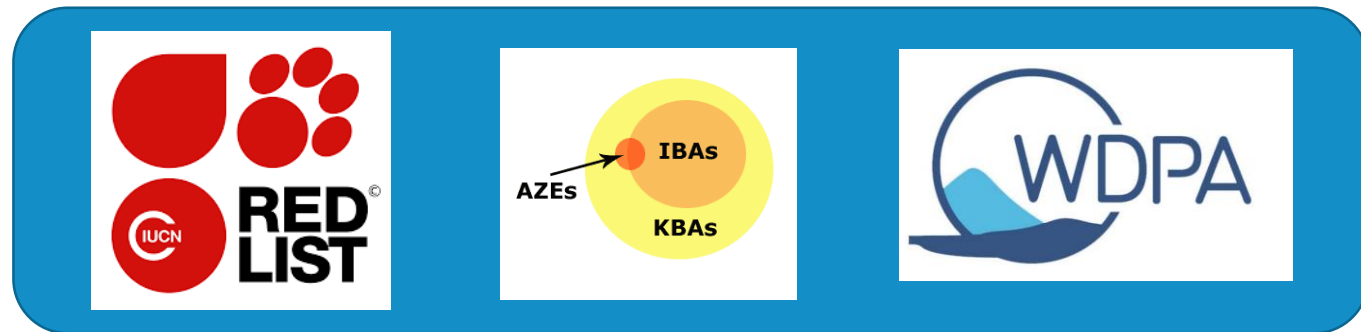
March 2017



**Red List Species**

89,692 species

December 2017  
Version 2017-3



# IBAT

IBAT Portal



IBAT data in user's portal



# Visualise, analyse, and access many different types of data in one portal...

The image displays three screenshots of the IBAT for Business web portal, illustrating its capabilities for visualizing and analyzing data.

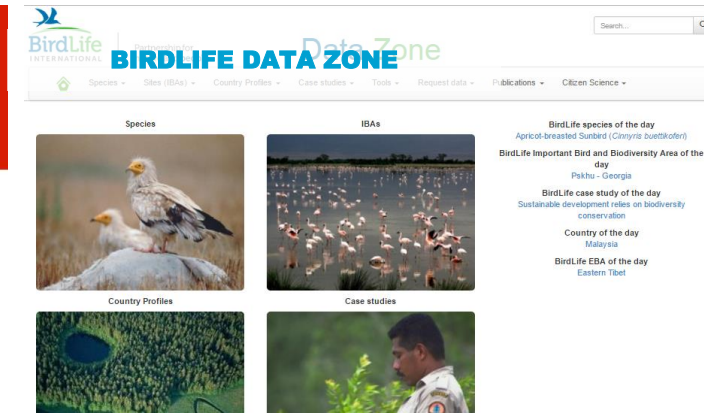
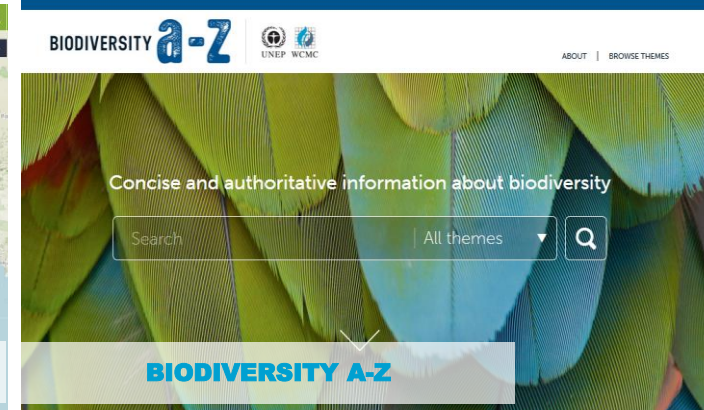
**Top Left Screenshot:** Shows the 'Map Viewer' interface. The map displays the geographical distribution of species across Southeast Asia, with various regions highlighted in red and green. The interface includes a 'New site' button, a 'Load' button, and a 'Map layers' button.

**Top Right Screenshot:** Shows the 'Map Viewer' interface with a 'Species Grid' overlay. The grid displays the number of species in each cell. A tooltip for the 'Species Grid' shows the 'Number of species' as 995.

**Bottom Center Screenshot:** Shows a 'Species List' table. The table lists species with their taxonomic group, species name, common name, IUCN Red List Category, and a 'Factsheet' link.

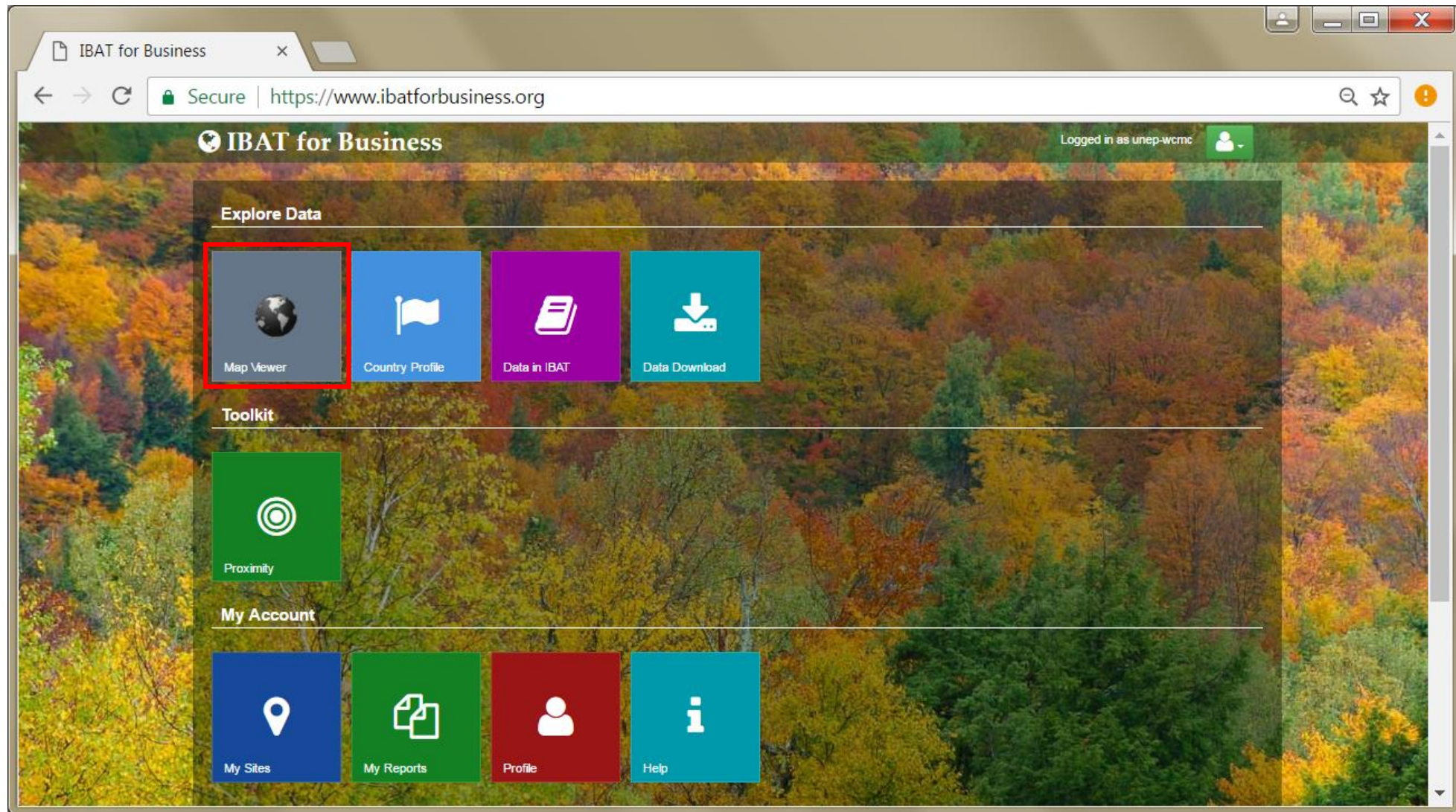
Taxonomic group	Species	Common name	IUCN Red List Category	Factsheet
Amphibians	<i>Ameletus nicobarensis</i>	Nicobar Island Frog	LC	<a href="#">Factsheet</a>
Amphibians	<i>Chalcidophis lampeni</i>		LC	<a href="#">Factsheet</a>
Amphibians	<i>Duttaphrynus melanostictus</i>	Black-speckled Toad	LC	<a href="#">Factsheet</a>
Amphibians	<i>Fijayarya carolinara</i>	Asian Brickish Frog	LC	<a href="#">Factsheet</a>
Amphibians	<i>Fijayarya limochana</i>	Asian Grass Frog	LC	<a href="#">Factsheet</a>
Amphibians	<i>Glyptothorax volz</i>		DD	<a href="#">Factsheet</a>
Amphibians	<i>Hyla sumatrana</i>	Sumatran Tarent Frog	LC	<a href="#">Factsheet</a>
Amphibians	<i>Hylarana erythraea</i>	Common Green Frog	LC	<a href="#">Factsheet</a>
Amphibians	<i>Ichthyophis paucicollis</i>	Yellow-banded Caecilian	DD	<a href="#">Factsheet</a>
Amphibians	<i>Kalophrynus pleurostigma</i>		LC	<a href="#">Factsheet</a>
Amphibians	<i>Kaloula baleata</i>	Smooth-fingered Narrow-mouthed Frog	LC	<a href="#">Factsheet</a>
Amphibians	<i>Kaloula pulchra</i>	Malaysian Narrowmouth Toad	LC	<a href="#">Factsheet</a>
Amphibians	<i>Leptobrachium hawesii</i>	Java Spadefoot Toad	LC	<a href="#">Factsheet</a>
Amphibians	<i>Leptophryne borbonica</i>	Hourglass Toad	LC	<a href="#">Factsheet</a>
Amphibians	<i>Limnonectes blythii</i>	Giant Asian River Frog	NT	<a href="#">Factsheet</a>
Amphibians	<i>Limnonectes kuhlii</i>	Large-headed Frog	LC	<a href="#">Factsheet</a>
Amphibians	<i>Limnonectes malaysicus</i>	Malaysia River Frog	NT	<a href="#">Factsheet</a>
Amphibians	<i>Limnonectes paramacodon</i>	Lesser Swamp Frog	NT	<a href="#">Factsheet</a>
Amphibians	<i>Limnonectes shompenorum</i>	Shompen Frog	LC	<a href="#">Factsheet</a>
Amphibians	<i>Megophrys aceras</i>		LC	<a href="#">Factsheet</a>
Amphibians	<i>Megophrys maui</i>	Malayan Horned Frog	LC	<a href="#">Factsheet</a>
Amphibians	<i>Metaphrynella pollicana</i>	Malaysian Treefrog	LC	<a href="#">Factsheet</a>
Amphibians	<i>Micrhylla bedfordi</i>	Bedford's Narrow-mouthed Frog	LC	<a href="#">Factsheet</a>
Amphibians	<i>Micrhylla heymonsi</i>	Acute-spotted Pigmy Frog	LC	<a href="#">Factsheet</a>
Amphibians	<i>Micrhylla palipes</i>	Palmed Chorus Frog	LC	<a href="#">Factsheet</a>
Amphibians	<i>Oocodygma lima</i>	Pointed-tongued Floating Frog	LC	<a href="#">Factsheet</a>
Amphibians	<i>Oocodygma sumatrana</i>	Sumatran Puddle Frog	LC	<a href="#">Factsheet</a>
Amphibians	<i>Orobana hosi</i>	Hose's Frog	LC	<a href="#">Factsheet</a>

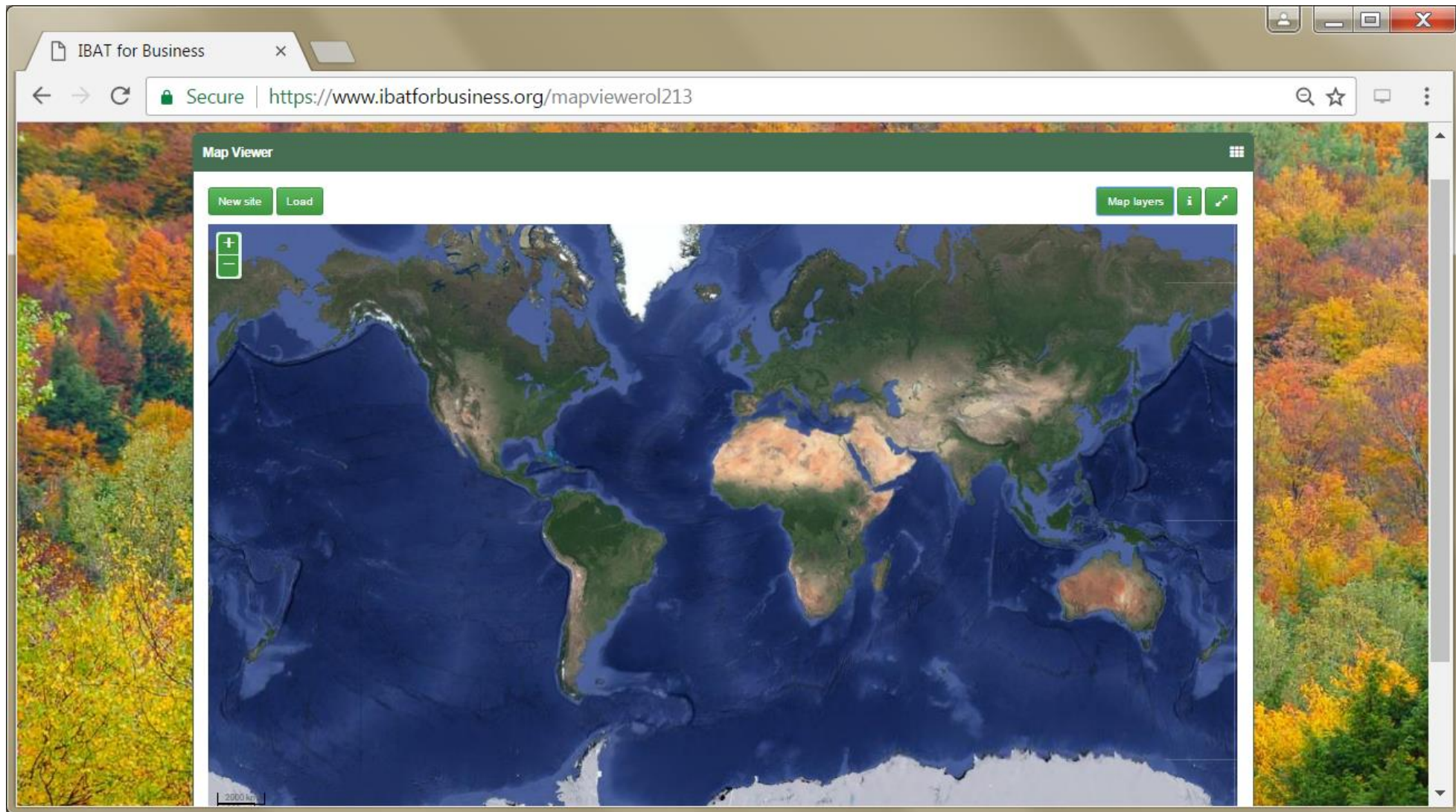
# ...and go through to the authority source of the data





# EXISTING FUNCTIONALITY





IBAT for Business

Secure | <https://www.ibatforbusiness.org/mapviewerol213>

Map Viewer

New site Load Map layers i ↗

+

-

**Map Layers**

Base layer

**Protected areas: national-level**

- IUCN management categories Ia, Ib, II
- IUCN management categories III, IV
- IUCN management categories V, VI
- IUCN management categories not reported/not assigned

**Protected areas: regional**

- Natura 2000
- Regional Seas

**Protected areas: international**

- Natural/Mixed World Heritage sites
- Ramsar sites
- UNESCO Man and the Biosphere Reserves

**Priority sites for biodiversity**

- Key Biodiversity Areas
- Important Bird & Biodiversity Areas
- Alliance for Zero Extinction Sites

**Species**

- Species Grid
- Freshwater Biodiversity

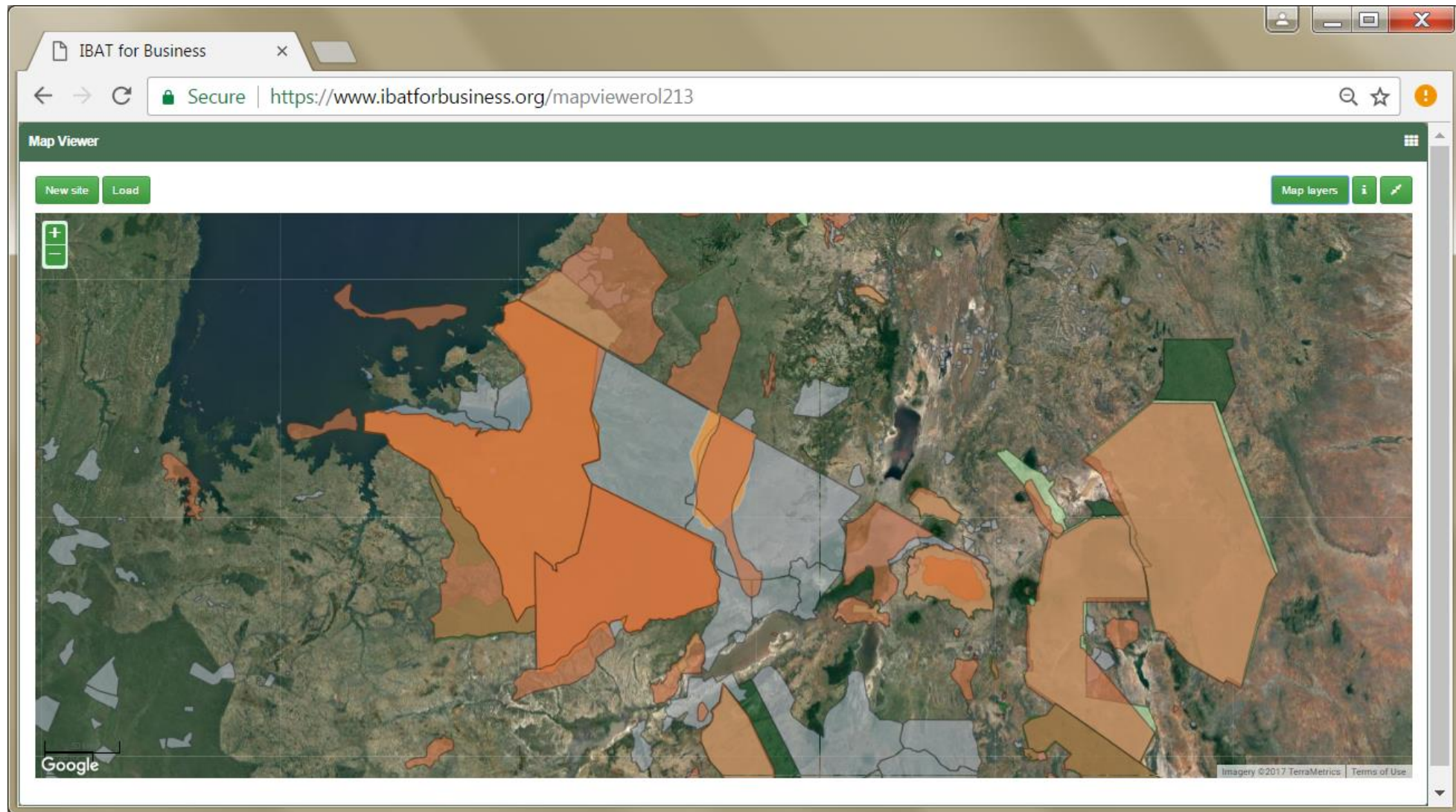
**Regions of conservation importance**

- Endemic Bird Areas
- Biodiversity Hotspots
- High Biodiversity Wilderness Areas

**Completeness**

- KBA Completeness

2000 km



IBAT for Business

Secure | <https://www.ibatforbusiness.org/mapviewerol213>

Map Viewer

New site Load Map layers

Priority Sites for Biodiversity

Key Biodiversity Area	Lake Natron and Engaruka basin Triggers: migratory birds/congregations, other
<b>Protected areas: international</b>	
Ramsar site	Lake Natron Basin
<b>Protected areas: national-level</b>	
IUCN category not reported/not assigned	Lake Natron GCA

Google Imagery ©2017 TerraMetrics Terms of Use

IBAT for Business | Lake Natron Basin | Prote

Secure | https://www.protectedplanet.net/lake-natron-basin-ramsar-site-wetland-of-international-importance

protected planet® About Updates & News Resources Terms & Conditions Thematic Areas Search


## Official Record for Lake Natron Basin United Republic of Tanzania

WDPA ID	900623
Reported Area KM <sup>2</sup>	2247.81
English Designation	Ramsar Site, Wetland of International Importance
IUCN Category	Not Reported

**Data Provider**

Ramsar Secretariat, on behalf of Ramsar Contracting Parties

Status	Type of Designation
Designated	International
Status Year	Sublocation
2001	TZ-01
Governance Type	
Not Reported	



Waiting for carbon-tool.carto.com...

IUCN UNEP WCMC Send Feedback

IBAT for Business

Secure | <https://www.ibatforbusiness.org/mapviewerol213>

Map Viewer

New site Load Map layers i

Priority Sites for Biodiversity

Key Biodiversity Area	Lake Natron and Engaruka basin Triggers: migratory birds/congregations, other
<b>Protected areas: international</b>	
Ramsar site	Lake Natron Basin
<b>Protected areas: national-level</b>	
IUCN category not reported/not assigned	Lake Natron GCA

Google Imagery ©2017 TerraMetrics Terms of Use

IBAT for Business

Secure | <https://www.ibatforbusiness.org/kbafactsheet/m6994>

## IBAT for Business

### KBA Factsheet

**International Name** Lake Natron and Engaruka basin  
**Country/Territory** Tanzania  
**Area** 154000 ha

This site has been identified as an Important Bird and Biodiversity Area based on the presence of:


- Significant congregations of one or more bird species at certain times in their lifecycle or seasonal migration
- Significant populations of species known only to be found in a particular biome and/or significant regional/sub-regional populations of trigger species

A more detailed IBA factsheet is available from [BirdLife International's Data Zone](#).

Taxonomic group	Species	Common name	IUCN Red List Category	Factsheet
Birds	<i>Agapomis fischeri</i>	Fischer's Lovebird	NT	
Birds	<i>Anthreptes orientalis</i>	Eastern Violet-backed Sunbird	LC	
Birds	<i>Argya aylmeri</i>	Scaly Chatterer	LC	
Birds	<i>Argya rubiginosa</i>	Rufous Chatterer	LC	
Birds	<i>Bradornis microhynchus</i>	African Grey Flycatcher	LC	
Birds	<i>Calamonastes simplex</i>	Grey Wren-warbler	LC	
Birds	<i>Caprimulgus donaldsoni</i>	Donaldson-Smith's Nightjar	LC	
Birds	<i>Caprimulgus fraenatus</i>	Sombre Nightjar	LC	
Birds	<i>Cisticola cinereolus</i>	Ashy Cisticola	LC	
Birds	<i>Criniferoides leucogaster</i>	White-bellied Go-away-bird	LC	
Birds	<i>Crithagra dorsostriata</i>	White-bellied Canary	LC	
Birds	<i>Estrilda chamosyna</i>	Black-cheeked Waxbill	LC	
Birds	<i>Granatina ianthinogaster</i>	Purple Grenadier	LC	

IBAT for Business x IBAT for Business x BirdLife Data Zone x

datazone.birdlife.org/site/factsheet/6994




# Data Zone

Search...

Species ▾ Sites (IBAs) ▾ Country Profiles ▾ Case studies ▾ Tools ▾ Request data ▾ Publications ▾

Citizen Science ▾

**Lake Natron and Engaruka basin** **This is an IBA in danger!**  TZ031

Summary **Text account** Data table and detailed info Map Reference and further resources

**Country/territory:** [Tanzania](#)

**IBA Criteria met:** A1, A3, A4i, A4iii (2001)  
For more information about IBA criteria please click [here](#)

**Area:** 154,000 ha

IBAT for Business x IBAT for Business x BirdLife Data Zone x

datazone.birdlife.org/site/factsheet/lake-natron-and-engaruka-basin-iba-tanzania/details

For more information about the IBA assessment process and criteria please click [here](#)

### IBA Monitoring

Most recent IBA monitoring assessment			
Year of assessment	Threat score (pressure)	Condition score (state)	Action score (response)
2013	high	not assessed	low
Was the whole site covered?	Yes	State assessed by	unset
Accuracy of information	unknown		

Threats to the site (pressure)					
Threat Level 1	Threat Level 2	Timing	Scope	Severity	Result
Agricultural expansion and intensification	livestock farming and ranching (includes forest grazing) - small-holder grazing, ranching or farming	happening now	small area/few individuals (<10%)	moderate to rapid deterioration	low
Climate change and severe weather	drought	likely in long term (beyond 4 years)	whole area/population (>90%)	moderate to rapid deterioration	high
		likely in short term (within 4 years)	majority/most of population (50%)	slow but significant	medium

Waiting for birdlaa5.memset.net...

IBAT for Business x IBAT for Business x

Secure | <https://www.ibatforbusiness.org/mapviewerol213>

### Map Viewer

New site Load Map layers i

Species Grid

Number of species	54
-------------------	----

Google Imagery ©2017 TerraMetrics Terms of Use

IBAT for Business

Secure | <https://www.ibatforbusiness.org/gridfactsheet/57502>

## IBAT for Business

### Species Grid Factsheet

#### Species list for grid cell 57502

Total number of Globally Threatened (CR, EN, VU), Near Threatened (NT) and Data Deficient (DD) species 53.

**Please note the following important statement regarding interpretation.**

The threatened species grid layer found in IBAT for Business is derived directly from the species distribution maps produced as part of each individual Red List assessment. The species distribution maps, commonly referred to as "limits of distribution" or "field guide" maps, aim to provide the current known distribution of the species within its native range. The limits of distribution are determined by using known occurrences of the species, along with knowledge of habitat preferences, remaining suitable habitat, elevation limits, and other expert knowledge of the species and its range. A polygon displaying the limits of a species distribution is essentially meant to communicate that the species likely only occurs within this polygon, but it does not mean that it is distributed equally within that polygon or occurs everywhere within that polygon.

The Red List deals with species of widely varying range sizes - from restricted range species limited to a single 1 km<sup>2</sup> site to species whose ranges exceed many hundreds of thousands of square kilometers, despite possibly being quite rare within that vast range. Therefore, one must be conscious of these factors when using the Globally Threatened Species Grid within IBAT. When one clicks on a grid cell within IBAT and reveals the species underlying that grid cell, they are revealing species whose "limits of distribution" intersect with that grid cell. This should not be confused with actual occurrence; rather, this should be interpreted as *possible* occurrence.

Should a user wish to explore a specific species' distribution map, the species list contains a link that will display the limits of distribution map (Range map) for that single species.


Taxonomic group	Species	Common name	IUCN Red List Category	Factsheet
Amphibians	<i>Mertensophryne nairobiensis</i>		DD	
Birds	<i>Aquila heliaca</i>	Eastern Imperial Eagle	VU	
Birds	<i>Ardeola idae</i>	Madagascar Pond-heron	EN	
Birds	<i>Ardeotis kori</i>	Kori Bustard	NT	
Birds	<i>Balearica regulorum</i>	Grey Crowned-crane	EN	
Birds	<i>Bucorvus leadbeateri</i>	Southern Ground-hornbill	VU	
Birds	<i>Buteo oreophilus</i>	Mountain Buzzard	NT	
Birds	<i>Charadrius pallidus</i>	Chestnut-banded Plover	NT	
Birds	<i>Circus macrourus</i>	Pallid Harrier	NT	

IBAT for Business x IBAT for Business x Acinonyx jubatus (Cheetah) x


www.iucnredlist.org/details/219/0

**The IUCN Red List of Threatened Species™** 2016-3 [Login](#) | [FAQ](#) | [Contact](#) | [Terms of use](#) | [IUCN.org](#)

[::About](#) [::Initiatives](#) [::News](#) [::Photos](#) [::Partners](#) [::Sponsors](#) [::Resources](#) [::Take Action](#)

Enter Red List search term(s)   [Discover more](#) 

[Home](#) » [Acinonyx jubatus \(Cheetah, Hunting Leopard\)](#)



© Jean-Christophe Vié

## Acinonyx jubatus

<http://dx.doi.org/10.2305/IUCN.UK.2015-4.RLTS.T219A50649567.en>

Scope: Global  
Language: English  
[Download assessment](#)

NOT EVALUATED	DATA DEFICIENT	LEAST CONCERN	NEAR THREATENED	<b>&lt; VULNERABLE &gt;</b>	ENDANGERED	CRITICALLY ENDANGERED	EXTINCT IN THE WILD	EXTINCT
NE	DD	LC	NT	VU	EN	CR	EW	EX

[Summary](#) | [Classification Schemes](#) | [Images & External Links](#) | [Bibliography](#) | [Full Account](#)

**Taxonomy [top]**

Kingdom	Phylum	Class	Order	Family
---------	--------	-------	-------	--------

[Taxonomy](#)  
[Assessment Information](#)  
[Geographic Range](#)  
[Population](#)  
[Habitat and Ecology](#)

IBAT for Business

Secure | <https://www.ibatforbusiness.org/mapviewerol213>

Map Viewer

New site Load Map layers

### New Site

Site name

**By degrees, minutes and seconds**

Latitude Degrees  Minutes  Seconds  North ▾

Longitude Degrees  Minutes  Seconds  East ▾

**By decimal degrees**

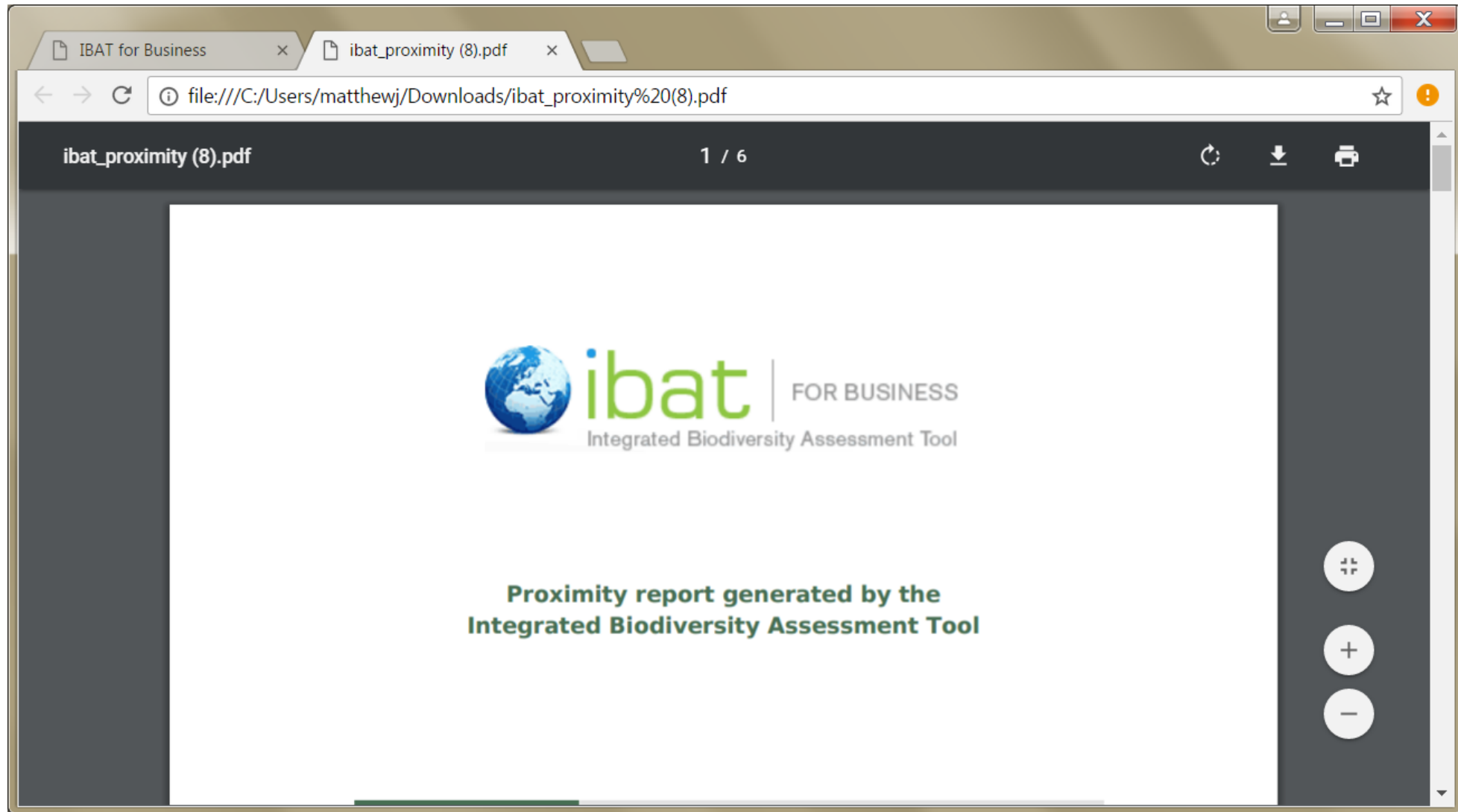
Latitude

Longitude

**Manual placement**

Ok Cancel

Google Imagery ©2017 TerraMetrics Terms of Use



### About this report

This report presents the results of a proximity analysis to identify the biodiversity features and species which are located within 1 km, 10 km and 50 km.

### Data used to generate this report

IUCN and UNEP-WCMC, 2015. *The World Database on Protected Areas (WDPA) [On-line]*, March 2015.

BirdLife International and Conservation International, 2015. *Key Biodiversity Areas: December 2014 version*.

IUCN, 2014. *The IUCN Red List of Threatened Species grid analysis of range maps for threatened, near threatened and data deficient species. Version 2014.3*.

### Limitations

This report provides an indication of the potential biodiversity-related features - protected areas, key biodiversity areas and species - close to the specified location. It provides an early indication of potential biodiversity concerns, and can provide valuable guidance in making decisions. For example, this information can be helpful when assessing the potential environmental risk and impact of a site, categorising investments/projects, preparing the terms of reference for an impact assessment, focusing attention on key species of conservation concern and sites of known conservation value, and reviewing the results of an impact assessment.

The report does not provide details of potential indirect, downstream or cumulative impacts. Furthermore, the report should be regarded as a "first-step", providing a set of conservation values sourced from global data sets, and is not a substitute for further investigation and due diligence, especially concerning national and/or local conservation priorities.

For ultimate accuracy, distance calculations are performed by reprojecting the spatial data (as shown through the map viewer) to an equal distance projection, and so may not match precisely the results shown on the map.

## Protected Areas and Key Biodiversity Areas

The following sites are found within the selected buffer distances:

### Features within 1 km

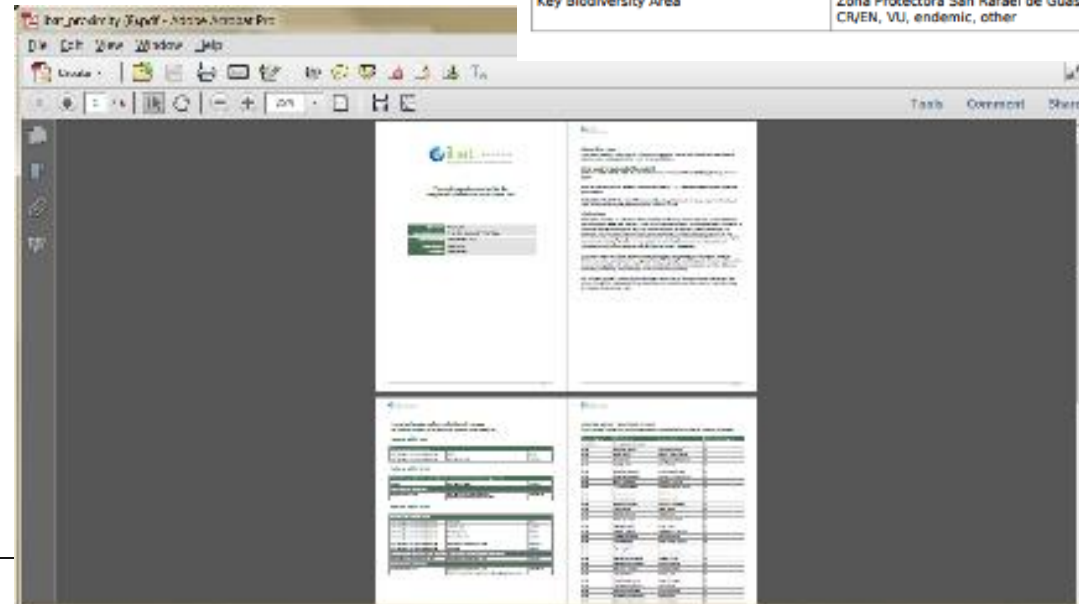
There are no features within 1 km.

### Features within 10 km

National-level protected areas		
IUCN Category not reported/assigned	Ubicada En Los Montes De Oca	8,521 ha

### Features within 50 km

National-level protected areas		
IUCN Category V-VI	San Rafael de Guasare	304,994 ha
IUCN Category not reported/assigned	Alta y Media Guajira	935,087 ha
IUCN Category not reported/assigned	Carraipia	5,456 ha
IUCN Category not reported/assigned	Manantial De Caañaverales	1,005 ha
IUCN Category not reported/assigned	San Martin	13 ha
IUCN Category not reported/assigned	Serrania De Perija	23,964 ha
Priority Sites for Biodiversity		
Key Biodiversity Area	Zona Protectora San Rafael de Guasare CR/EN, VU, endemic, other	302,000 ha



IBAT for Business

Secure | <https://www.ibatforbusiness.org/datadownload>

Logged in as unep-wcmc

## Data Download

As an annual subscriber, you can download complete global spatial data sets in shape file format (for use with, for example, ESRI's suite of GIS applications):

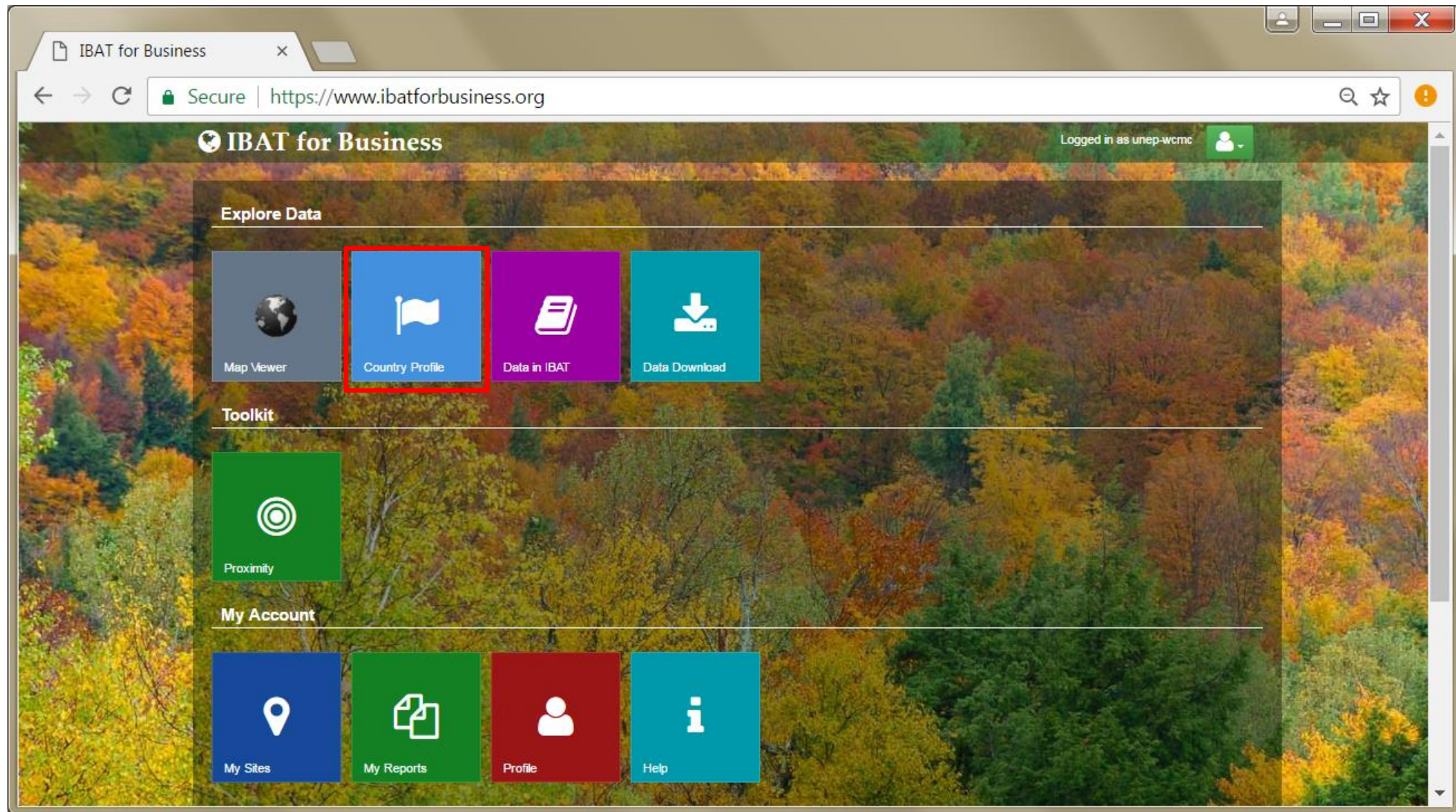
- Protected areas**, including national-level protected areas (including IUCN management categories I-VI), protected areas designated under regional conventions and agreements (including Natura 2000 and Regional Seas) and protected areas designated under international conventions and agreements (including World Heritage sites, Ramsar and UNESCO Man and Biosphere) - [download shape files](#) or [download geodatabase](#).  
  
Citation: IUCN and UNEP-WCMC, 2017. *The World Database on Protected Areas (WDPA) [On-line], January 2017*. Downloaded under licence from the Integrated Biodiversity Assessment Tool. <http://www.ibatforbusiness.org>
- Key Biodiversity Areas** (including Alliance for Zero Extinction Sites and BirdLife's Important Bird and Biodiversity Areas) - [download shape files](#).  
  
Citation: BirdLife International (on behalf of the KBA Partnership), 2016. *Key Biodiversity Areas: December 2016 version*. Downloaded under licence from the Integrated Biodiversity Assessment Tool. <http://www.ibatforbusiness.org>.
- Species range maps**: the species distribution maps, commonly referred to as 'limits of distribution' or 'field guide' maps, aim to provide the current known distribution of the species within its native range. The limits of distribution are determined by using known occurrences of the species, along with knowledge of habitat preferences, remaining suitable habitat, elevation limits, and other expert knowledge of the species and its range. A polygon displaying the limits of a species distribution is essentially meant to communicate that the species likely only occurs within this polygon, but it does not mean that it is distributed equally within that polygon or occurs everywhere within that polygon. The range data are from Version 2016.1 of the IUCN Red List of Threatened Species. See the [factsheet](#) for additional details on the species data - [download geodatabase](#).  
  
Citation: For individual species maps, credit information is provided in the Citation field of the attribute data which accompanies each shapefile. This information should be used in conjunction with the credit information for the spatial data set as a whole using the following format:

### Key web resources

- [Protected Planet](#)
- [BirdLife's Data Zone](#)
- [The IUCN Red List of Threatened Species](#)

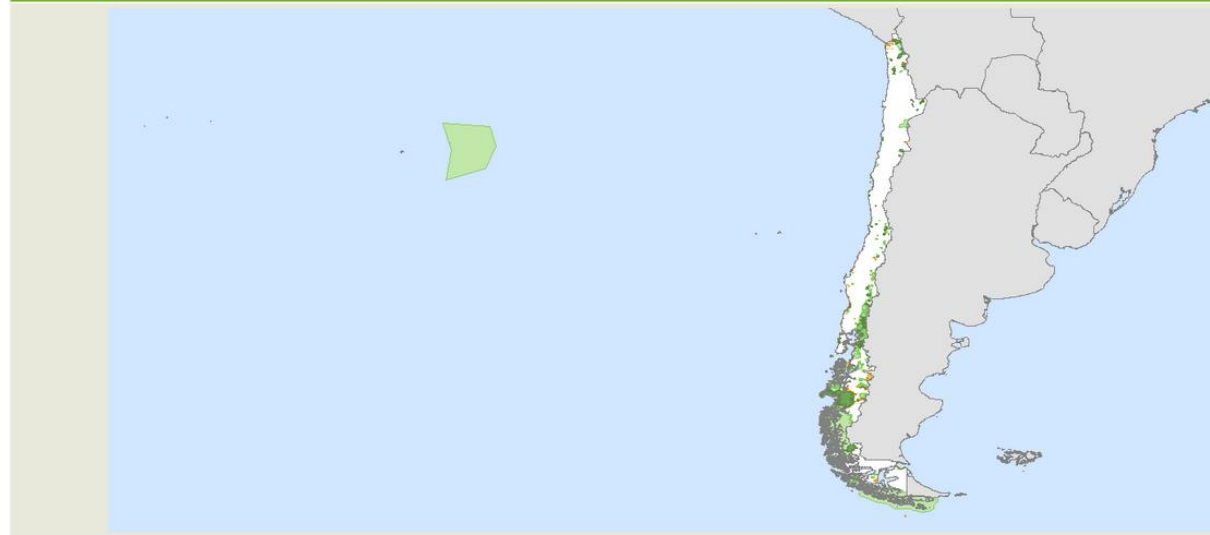
### Key documents

- [Guide to Spatial data](#)
- [Fact sheet on latest Species \(Red List\) data](#)



The screenshot shows a web browser window with the URL <https://www.ibatforbusiness.org/countryprofile>. The page features a dark green header with the IBAT for Business logo and a user profile icon labeled "Logged in as Training". Below the header is a white content area with a dark green title bar that reads "Country/Territory - Overview". The main heading is "Country/Territory overview". A sub-heading states: "To view a country/territory profile, please select an entry from the drop-down list below." Below this is a dropdown menu with "Chile" selected. The text continues: "These country/territory profiles have been created to allow users to view summaries of information at the national/territorial level. The profiles provide access to pre-packaged data and statistics developed from the core datasets available in IBAT. Currently the profiles focus on the protected areas and key biodiversity areas within a country/territory, presenting the overall level of protection and the extent to which sites important for biodiversity are protected. Links to further information are provided on the Resources tab." The background of the page is a vibrant autumn forest. At the bottom, there is a footer with navigation links: "News | About | FAQs | Subscribers | Supporters | Contact Us | Terms of use | Privacy" and a copyright notice: "© 2008-2018 IBAT. All rights reserved. Designed by QPQ Software Ltd".

## Chile



■ Protected Areas
 ■ Protected KBAs/AZEs
 ■ Unprotected AZE Sites
 ■ Unprotected Other KBAs

This map has been created based on the data analysed for the Key Biodiversity Area (KBA) statistics presented below. To view the latest data please visit the [Map Viewer](#).

## Protected Areas

Total area (km<sup>2</sup>) and percentage of country/territory protected

Total	153,339 km <sup>2</sup> (15.0%)	Terrestrial/inland water	140,989 km <sup>2</sup> (18.6%)	Coastal/Marine	12,350 km <sup>2</sup> (4.8%)
-------	---------------------------------	--------------------------	---------------------------------	----------------	-------------------------------

**Source:** The national protected area statistics presented here have been drawn from an analysis undertaken in 2013 by UNEP-WCMC of the data held in the World Database of Protected Areas (WDPA). These statistics are used to report progress to the UN Millennium Development Goals, and to the Aichi Biodiversity Targets of the Convention on

Level of protected area coverage	All KBAs	Terrestrial/inland water KBAs	Coastal/Marine KBAs
Number of KBAs	9	7	2
% KBAs with complete (>98%) coverage	11.1%	14.3%	0.0%
% KBAs with partial coverage	44.4%	42.9%	50.0%
% KBAs with no (<2%) coverage	44.4%	42.9%	50.0%
Mean % area of each KBA covered	35.5%	38.0%	26.9%

**Source:** For further information on AZEs please visit the [AZE website](#).

the BirdLife Important Bird and Biodiversity Area (IBA) criteria. Sites  
 set of KBAs that are of particular importance because they represent  
 or Endangered species. KBAs based on other taxa are yet to be

Land and water KBAs	Coastal/Marine KBAs
	67
	22.4%
	13.4%
	64.2%
	27.5%

ity Areas (IBAs), Alliance for Zero Extinction sites (AZEs) and data from  
 release of the WDPA (with supplementary data for Estonia and Australia),  
 dge where available). KBAs identified as part of the [CEPF](#) hotspot



UN Environment  
World Conservation Monitoring Centre

[www.unep-wcmc.org](http://www.unep-wcmc.org)  
[@unepwcmc](https://twitter.com/unepwcmc)

**Katie Leach**

Programme Officer, Business and Biodiversity

[katie.leach@unep-wcmc.org](mailto:katie.leach@unep-wcmc.org)



United Nations Environment  
World Conservation Monitoring Centre

# PROTEUS ANNUAL MEETING

20<sup>th</sup> – 22<sup>nd</sup> June 2018, David Attenborough Building, Cambridge, UK

