

# Proteus Strategy 2021-2025



Supporting company decision making to be nature positive



# From 2021–2030 businesses can take leadership in delivering sustainable development and halting biodiversity loss.

Biodiversity is in decline. Over half the world's GDP is potentially at risk due to dependence of business on biodiversity and ecosystem services. However, nature can be conserved, restored and used sustainably if we take urgent and concerted action. This requires transformative change of major socio-economic systems: food, land and ocean use; infrastructure and the built environment; and extractives and energy. If key transitions can be achieved within these systems, we will respond to these threats, and create significant business and societal value.

Systemic change can only succeed if we work together. Since 2003, the Proteus Partnership has been a vehicle through which leading companies have taken steps to address their relationship with biodiversity. Through it, companies have contributed to the goals and objectives of UNEP, and biodiversity conservation globally. Proteus has evolved throughout its history and will evolve again to meet the challenges posed by the next 5 years and beyond.

This strategy describes how the Proteus Partnership will expand, supporting major companies to lead by example, and incorporate biodiversity into their site- and corporate-level decision making.

# Contents

Renewal of Proteus	5
Proteus 2021 – 2025	7
Goal 1: Help companies recognize their responsibilities for nature and communicate the business case for its management	9
Goal 2: Accelerate and scale decision support tools and capacity building to help improve corporate performance	11
Goal 3: Strengthen and increase business exposure to the global policy agenda on nature	14
Goal 4: Sustain a viable mutually beneficial Partnership through cross-sectoral collaboration	16
Governance and Participation in Proteus	19
The Proteus Partnership: Achievements	20
About UNEP-WCMC	21



*“From 2003 to 2020  
Proteus has helped  
19 major companies  
base decisions  
on evidence and  
invested over  
£11 million in  
conservation data  
and approaches”*

# Renewal of Proteus

## 2021-2030 is the decade for action on the Sustainable Development Goals and to accelerate implementation of the Global Biodiversity Framework.

Biodiversity is in decline. The 2019 IPBES Global Assessment on biodiversity and ecosystem services identified land/sea use change, direct exploitation of biodiversity, climate change, pollution and invasive alien species as the largest drivers of change<sup>1</sup>. In 2020, analysis by the World Economic Forum (WEF) showed that over half of global GDP is potentially at risk due to dependence of business on biodiversity and ecosystem services. CEOs are aware of the scale of the challenge. The WEF Global Risks Report 2020<sup>2</sup> identified biodiversity loss as one of the greatest risks by likelihood and impact.

However, it is still possible to conserve, restore and use biodiversity sustainably. We can achieve this while meeting other societal goals. But we must take urgent and concerted action. This will require transformative change.<sup>3</sup>

A second report by the WEF on the Future of Nature and Business<sup>4</sup> identified three socio-economic systems which are driving the largest threats: food, land and ocean use; infrastructure and the built environment; and extractives and energy. Business in these sectors are priorities for action. Making transitions within these systems will respond to these threats and create business value.

## More than ever, we need partnerships to address biodiversity challenges.

Since 2003 Proteus has been a vehicle for leading companies to address their relationship with biodiversity. It has helped support better biodiversity data, helped companies access this data in the context of their own operations, convened companies to engage with others and supported their capacity for change. From 2003 to 2020 Proteus has helped 19 major companies base decisions on evidence, and invested over £11 million in conservation data and approaches.

Proteus has evolved over this period, and will continue to evolve to meet changing needs of the partners and

wider society. Proteus was created in response to a need for better data to inform better decisions. Over time, the scope of the Partnership has grown to place that data in the context of business decisions, and to place those decisions in the context of global momentum to address the biodiversity crisis. The imperative to address biodiversity, climate and societal goals in cohesion shapes the future of work to be carried out through Proteus.

Building on the success of previous phases, and with the buy-in and support of existing partners, the Proteus Partnership will be renewed for another 5 years, from 2021 to 2025.

## The next phase of Proteus contributes to two pillars of UNEP's private sector strategy.

**Transformative changes of industries and sectors.** Proteus brings together leading companies with UNEP's global Centre of excellence on biodiversity to help business adopt best practice approaches to biodiversity management. Proteus helps companies to measure and understand the value of biodiversity.

**Resources and income to scale up and accelerate the momentum towards a sustainable future.** Proteus leverages funding from the private sector, alongside financial and in-kind contributions from other donors to deliver benefits which reach far beyond the Proteus partners. For example, in the 2021-2025 phase, Proteus will contribute to a shift towards open data, significantly scaling the impact these data have on decisions.

By working together with a group of companies, Proteus aims for replication and scale of good practice on biodiversity across multiple sectors and land/seascapes.

## Companies engaging in the next phase of Proteus have a shared vision and mission.

Our shared vision is a planet where business contributes to a clean, healthy, resilient environment for all. This vision is part of the bigger picture, it won't be achieved through Proteus alone, but it's what we're aiming to contribute to.

The mission of Proteus is to support company decision making to be nature positive. This mission will be delivered by achieving clear goals, underpinned by a mutually agreed workplan and deliverables.

<sup>1</sup> Intergovernmental Panel on Biodiversity and Ecosystem Services Global Assessment (2019) <https://ipbes.net/global-assessment>

<sup>2</sup> WEF Global risk Report (2020) <https://www.weforum.org/reports/the-global-risks-report-2020>

<sup>3</sup> IPBES *ibid*.

<sup>4</sup> WEF The Future of Nature and Business (2020) [http://www3.weforum.org/docs/WEF\\_The\\_Future\\_Of\\_Nature\\_And\\_Business\\_2020.pdf](http://www3.weforum.org/docs/WEF_The_Future_Of_Nature_And_Business_2020.pdf)

## The Goals of Proteus



**1. Help companies recognize their responsibilities for nature and communicate the business case for its management.**



**2. Accelerate and scale decision support tools and capacity building to help improve corporate performance.**



**3. Strengthen and increase business engagement in the global policy agenda on nature**



**4. Sustain a viable mutually beneficial partnership through cross-sectoral collaboration.**

The goals of Proteus 2021-2025 are designed to align with the expected post-2020 Global Biodiversity Framework, support delivery of the Sustainable Development Goals and help companies contribute to the UN Decade on Ecosystem Restoration.

## Proteus is governed transparently.

Partner companies make a financial contribution to the annual workplan of Proteus. This contribution will be leveraged one-to-one against other sources of funding to secure even greater value and impact from the investment made by the private sector.

Why join Proteus? Being part of Proteus will help companies as they transform their relationship with biodiversity. It will also contribute to global efforts to safeguard biodiversity and tackle environmental challenges.

Proteus has achieved a great deal since its inception in 2003 and now is the time to build on that success. This strategy explains how we will do that together.

# Proteus 2021 – 2025

## Vision

**A planet where business contributes to a clean, healthy, resilient environment for all.**

This vision will not be achieved through Proteus alone. We recognise that Proteus is one part of a global push for transformative change. This vision represents the future to which Proteus aspires to contribute.

## Mission

**Support company decision making to be nature positive.**

The mission of Proteus will be achieved through clear goals, underpinned by annual work plans and deliverables. These goals recognise the imperative for sustainable development pathways and will be achieved not only through direct benefits to partners but through the wider outcomes of the Partnership. The results and impact of investment in Proteus are also delivered to governments and civil society in tackling the challenge of biodiversity loss.

## Goals



**1. Help companies recognize their responsibilities for nature and communicate the business case for its management.**

Proteus will secure buy-in and commitment within partner companies to change the way they manage their relationship with biodiversity.



**2. Accelerate and scale decision support tools and capacity building to help improve corporate performance.**

Proteus will help companies address biodiversity-related risks, and to understand and manage their impacts and dependencies on biodiversity.



**3. Strengthen and increase business engagement in the global policy agenda on nature.**

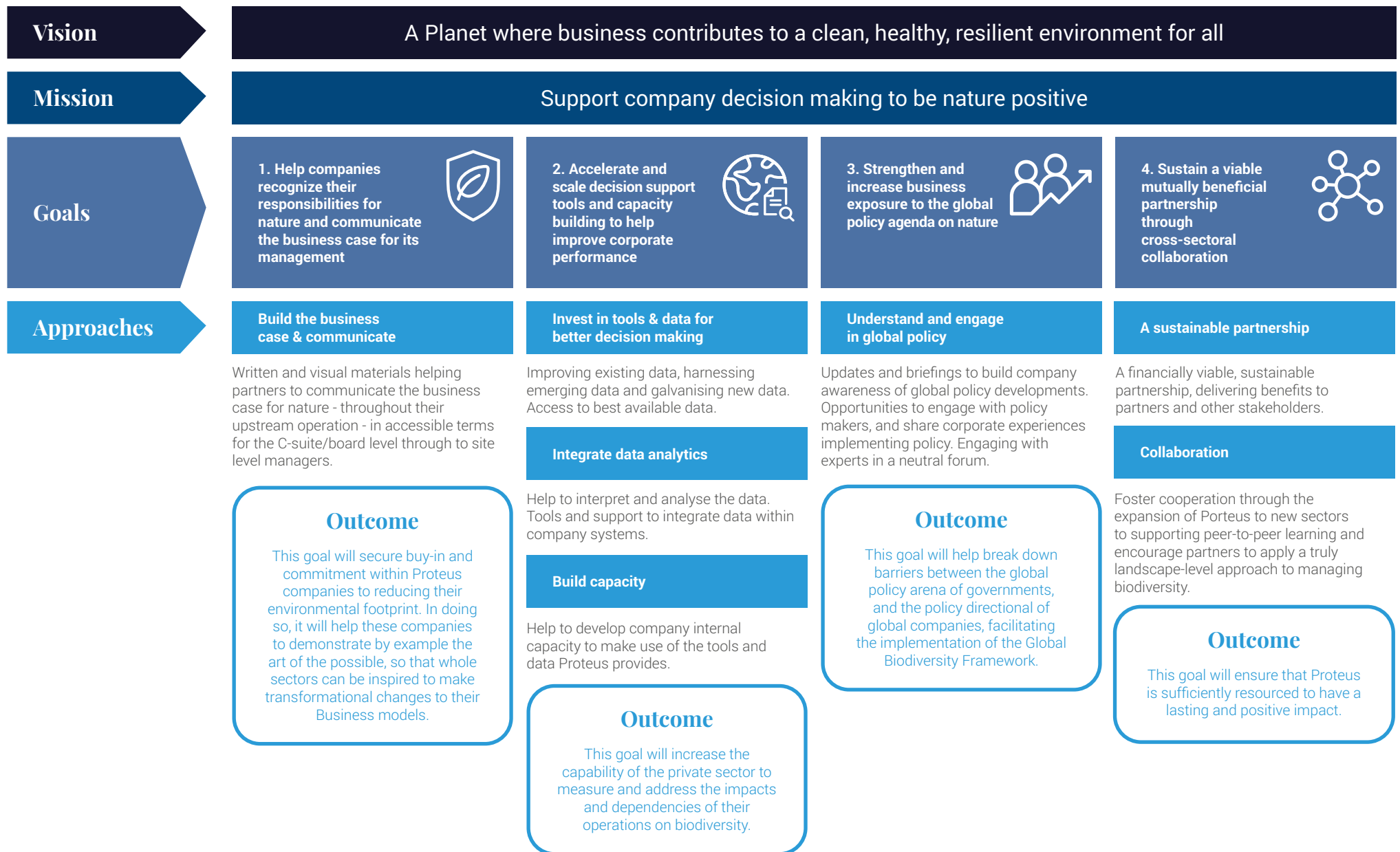
Proteus will help build shared understanding and alignment of objectives between global biodiversity policy at government and at private sector level. It will help facilitate implementation of the Global Biodiversity Framework.



**4. Sustain a viable mutually beneficial partnership through cross-sectoral collaboration.**

Proteus will expand to new sectors to deliver sufficient resources for a lasting, sustainable and overwhelmingly positive impact for biodiversity conservation and corporate decision making.

Figure 1: Vision, Mission, Strategies, Approaches & Outcomes of the Proteus strategy





# Goal 1



# Goal 1

## Help companies recognize their responsibilities for nature and communicate the business case for its management

The business case for biodiversity is often not strong enough.

Helping companies to make and communicate the business case is a small but very important part of what Proteus will continue to do. Pressure to act on biodiversity comes from a multitude of stakeholders such as regulators, customers, employees, governments, and investors. But even so decisions are still made without full account of their potential biodiversity impact. If the business case was stronger, very different decisions might be taken.

The current business case is weakened by a lack of knowledge and understanding of the impacts and dependencies a business has on biodiversity. Biodiversity concepts are often misunderstood and miscommunicated within businesses.

Yet there are positive signals that this is changing. At the most senior level, there has been an increasing awareness of the likelihood and impact of risks to countries and industries arising from biodiversity loss over the past four years as evidenced by the World Economic Forum Global Risks Reports<sup>5</sup>. There is no reason to believe this trajectory will change. With this rising awareness comes a rising attention, particularly at the most senior levels. There has been an increasing demand for authoritative, credible information on the case for biodiversity management which is appropriate to the different audiences within a business.

Helping non-experts in businesses to understand biodiversity can have a huge impact on overall performance. A well-presented business case is central to biodiversity - and biodiversity loss - being recognised and managed as a material issue.

*“At the most senior level, there has been an increasing awareness of the likelihood and impact of risks to countries and industries arising from biodiversity loss over the last 4 years”*

Under this goal the Proteus work programme will deliver

- Written and visual materials helping partners to communicate the business case for nature - throughout their upstream and downstream operations - in accessible terms for the C-suite/board level through to site level managers.

**This goal will** secure buy-in and commitment within Proteus companies to reducing their environmental footprint. In doing so, it will help these companies to demonstrate by example the art of the possible, so that whole sectors can be inspired to make transformational changes to their business models.

<sup>5</sup> <https://www.weforum.org/global-risks/archive>



# Goal 2

## Goal 2

# Accelerate and scale decision support tools and capacity building to help improve corporate performance

Through Proteus we will invest in tools and data which companies need to take better decisions.

Making data and tools fit for purpose has always been central to the aims of Proteus. This goal is where much of funding will continue to be directed. Without financial support from Proteus the update and maintenance of these datasets would not happen at its current level. Data quality would soon deteriorate.

**Improving existing data.** Proteus will continue to support the World Database on Protected Areas and coastal and marine data through Ocean+. Investment in these datasets will focus on expanding geographic coverage, data quality and validation, and refining data verification. In the context of the WDPA this will support inclusion of non-government data, with better representation of protected areas under the governance of Indigenous Peoples, local communities and private actors. Through Proteus, partners will have access to the Integrated Biodiversity Assessment Tool – the only tool built specifically to bring together the best available global biodiversity data to support consistent project screening, performance tracking, and reporting. This tool will continue to innovate and expand with new functions, analytics and reports. With the growing momentum of the UN Decade of Ocean Science, the Ocean+ initiative will continue to connect Proteus Partners with emerging authoritative ocean biodiversity data, partnering with experts from around the world to develop and deliver both leading and timely information and analyses on ocean ecosystem health and restoration.

**Harnessing emerging data.** Proteus will increase support for data which has been identified as an emerging priority by the private sector and conservation experts. This includes data on other effective area-based conservation measures. These sites recognise effective long-term conservation that is taking place outside currently designated protected areas.

**Galvanising new data.** New datasets responding to global needs, including those identified as priorities in

consultation with the partners, will also be developed with funding from Proteus. These global needs will be aligned with the Sustainable Development Goals, the Global biodiversity Framework, and the UN Decade on Ecosystem Restoration. These data are expected to address topics such as migratory species, ecosystem restoration and natural capital assets. This will allow Proteus to reflect interconnected issues across the biodiversity/climate/water nexus through interconnected data.

This phase of Proteus will explore mechanisms to enable data sharing. This will allow observation data collected by the private sector to feed into global datasets which then become much more useful as a result. Partners will be supporting biodiversity science and will benefit from the resulting improvements to biodiversity data.

**This phase of Proteus will lay the groundwork for as much data as possible to be made freely available.**

UNEP-WCMC is committed to adopting an Open Data policy and over the period 2021-2025 we will transition all data possible, respecting third party data provider or intellectual property restrictions. Proteus has always improved data for other users as well as the partners. This transition is a logical next step for a partnership that has supported data access for over 15 years.

This approach will continue the track record of Proteus contributing to making tools and data available to other important stakeholders, particularly governments and conservation organisations. Doing so will ensure that the same data are available across different actors, with the aim to increase the consistency and coherence of policy and business decisions and the interoperability across data platforms. We will expand this aim in the next phase so that other businesses, especially those in supply chains, are also able to improve their decision making around environmental issues. Goal 4 explores this expansion in further detail.

Creating truly open data will require us to invest heavily in our data infrastructure, our data provider capacity and relationships and our procedures. Over this phase of Proteus, we will invest in these areas to ensure we deliver a long-term and viable shift in data availability.

We also recognise that access to data is a key driver of membership within Proteus. However, investing in open data is vital to improving the quality for current partners. Doing so will also allow us to leverage significant additional financing for data quality from funding sources requiring that data be open as a condition of funding. The post-2020 Global Biodiversity Framework - which is expected to emphasise the role of non-state actors - is reliant on open data. Partners who support Proteus during 2021-2025 will make a significant contribution towards the implementation of that Framework. Proteus will continue to be the only avenue through which access to data is accompanied by the full range of benefits and support for the private sector seeking to work with UNEP-WCMC.

## To deliver this goal, Proteus Partners will get help to interpret the data.

Companies in Proteus face shared challenges. The unique nature of Proteus means that the impact of helping one company address a question can be maximised, by sharing that experience with other partners. As the global authorities on the biodiversity data provided through Proteus, UNEP-WCMC is best placed to help companies understand both how to use, and how to interpret the data. Through Proteus, we can help companies to integrate data analytics into their systems, policies and processes. This will support companies responding to calls for greater transparency for example through the Global Reporting Initiative, under the mainstreaming agenda of the Convention on Biological Diversity.

## We'll also help partners to develop their internal capacity to make use of the tools and data Proteus will provide.

Giving people information isn't even half the challenge. Biodiversity data can be complex and raise questions which require expert advice. Companies often face challenges through loss or attrition of knowledge associated with staff-turnover. Thus, they need regular training just to maintain a baseline of expertise. Proteus allows UNEP-WCMC to provide direct training and access to training materials for partners. As attention on biodiversity loss intensifies, so too does the level of scientific research. Through Proteus companies can access the most up to date knowledge at the science/policy and business/biodiversity interface.

### Under this goal, the Proteus work programme will deliver in three areas:

#### Data and tools

- Monthly direct access to the most up to date biodiversity data for protected areas and Other Effective area-based Conservation Measures.
- Access to marine and coastal data via Ocean+
- Access to new data developed to respond to needs identified with partners.
- Access to and influence over development of a data sharing mechanism for baseline and observation data.
- Access to the Integrated Biodiversity Assessment Tool and the ability to provide feedback on new and improved functionality in the tool
- Ability to nominate priority countries for data update (across all UNEP-WCMC hosted datasets)

#### Data analytics

- Technical Briefings on challenges and questions raised by partners
- Annual data audit, providing support for partners to integrate data into their systems

- Web services delivering data directly into partner systems
- Data verification support (fair use restriction applied)

#### Capacity and support

- 20 hours of technical assistance from UNEP-WCMC's expert team per year
- Ability to commission UNEP-WCMC's expertise to provide additional support
- Online and in person training and access to training resources
- Access to a specialist cross-partnership data forum supporting peer-to-peer learning with other technical experts
- Access to and influence over development of the Biodiversity A-Z
- Option to explore secondments.

These benefits are delivered directly to partners, as well as through the Annual Proteus Partners' Meeting which brings partners together with other leading experts to support peer-to-peer learning

**This goal will** increase the capability of the private sector to measure and address the impacts and dependencies of their operations on biodiversity.



# Goal 3

# Goal 3

## Strengthen and increase business exposure to the global policy agenda on nature

Involvement in Proteus will help companies to understand and engage in global biodiversity policy.

We have seen global momentum build to engage business in policy processes over recent years. Yet there is still a disconnect between how intergovernmental negotiations work and how international businesses can be involved. Much of this is inherent in the rules and procedures adopted by Parties or Member States which aim to facilitate negotiation between governments, but there are an increasing number of opportunities for the private sector to engage. Engaging companies will facilitate implementation.

Despite the opportunities, business often cannot justify attending all the meetings, and need help to track what is going on. This a role which UNEP-WCMC has been asked to play through Proteus during the 2016-2020 phase. Proteus will continue to support and facilitate this, with updates and implications from negotiations and decisions fed back to partners. This will take the form of report backs during events themselves, as well as follow-up briefings and summaries of the key implications for the private sector.

Through Proteus, we will help partners make a business case for attending key events. Even for major occasions

such as the Conference of the Parties to the Convention on Biological Diversity there needs to be a solid rationale for participation. Proteus can help individual businesses to make the case to attend by convening meetings and side events. When in attendance, UNEP-WCMC's delegation can help companies navigate the procedures and agendas, so that they get the greatest benefit from engaging in the process.

Under this goal, the Proteus work programme will deliver

- Regular updates from our team participating in the global policy arena (including the Convention on Biological Diversity Conferences of the Parties and subsidiary meetings, UN Environment Assembly, IUCN World Conservation Congress and related events)
- Horizon scanning webinars and briefings which help companies to track progress, upcoming events and potential business implications
- Opportunities to engage with policy makers and other stakeholders through side events, pavilions and meetings in the margins.
- Ability to engage with leading experts in a neutral forum, through the Annual Proteus Partners' Meeting.

**This goal will** help break down barriers between the global policy arena of governments, and the policy direction of global companies, facilitating the implementation of the Global Biodiversity Framework.



# Goal 4

# Goal 4

## Sustain a viable mutually beneficial partnership through cross-sectoral collaboration

### Proteus mobilises resources to create momentum for change.

From the private sector these resources are financial, with contributions made on an equal basis to fund a jointly agreed workplan. From UNEP-WCMC and the conservation community more broadly, these resources stem from our expertise, knowledge, tools and data.

Cross-sectoral collaboration through Proteus shares knowledge within the private sector, and between private sector and other actors. For 17 years Proteus has been aimed exclusively at extractive industries. This has kept the Partnership focussed. Deliverables from Proteus have been tailored to specific needs of the industries in which partners operate.

However, now is the right time to carefully expand the remit of Proteus to be open to other sectors. Extractive industries do not operate in a vacuum, and we've increasingly seen and heard that current partners' businesses are changing. Extractive industries also have a great deal in common with other sectors, and can learn from the experience of others in addressing common challenges and harnessing common opportunities. Current partners operate within landscapes and seascapes shared with others. Addressing cumulative impacts within these land and seascapes are an increasing concern for current partners. Proteus can and should help partners to apply a truly landscape-level approach to managing biodiversity.

### From 2021, Proteus will expand its impact across other sectors.

Existing partners are expected to help make introductions to potential new partners, who can in principle be from any sector. New partners must support the vision, mission and goals of Proteus. Any prospective partners should be leading companies, sharing common goals with existing partners. To maintain the neutrality of Proteus, membership is not open to consultancies.

As such, we will focus careful recruitment of new

partners in sectors where there are already strong links to the current partners of the partnership. Recruitment will also seek to address high-impact sectors and systems where there is the greatest potential for change. This will be guided by the drivers of biodiversity loss identified by the IPBES Global Assessment and priority sectors and systems identified by the World Economic Forum. The current Proteus membership is across the extractives and energy system, recruitment will build on this history and then prioritise new partners from the food, land and ocean use; and infrastructure and the built environment systems.

Expanding the reach and membership of Proteus will also expand the financial resources available to deliver the outputs and outcomes of the annual work plan. The unique structure of Proteus means that when leveraged funding is considered, for every £1 contributed by an individual partner, an additional £30-40 is contributed by others. By growing the membership of Proteus, we aim to increase this individual leverage, amplifying value and impact.

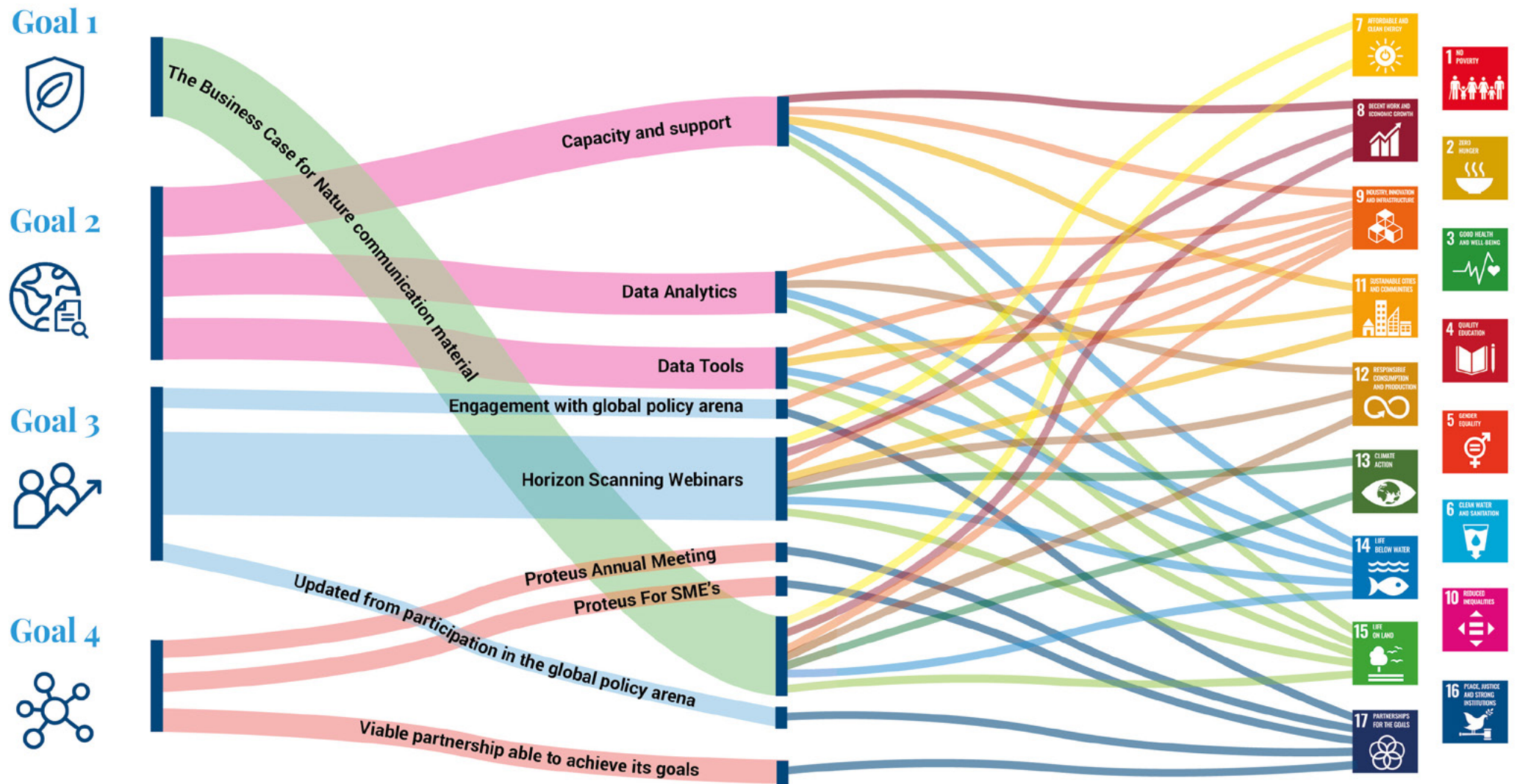
In addition to expanding to other large companies, the impact of Proteus will be multiplied by creating ways for smaller companies to participate. We will do this by facilitating access to some of the benefits of Proteus membership to small and medium enterprises at a correspondingly lower rate of financial contribution.

### Under this goal the Proteus work programme will deliver

- A financially viable partnership, with sufficient resources to achieve its goals, so that the benefits to the partners are sustained both during and beyond this phase of work.
- An annual workplan which helps multiple sectors to contribute to global sustainability frameworks.
- Partner input to the annual workplans including through the Annual Proteus Partners' Meeting, ensuring the Partnership remains committed to and focussed on achieving its purpose.

**This goal will** ensure that Proteus is sufficiently resourced to have a lasting and positive impact.

Figure 2: Proteus deliverables mapped against the ways they help partners contribute to the Sustainable Development Goals



# Governance and Participation in Proteus

## Proteus is governed in a transparent manner

Proteus is a voluntary collaboration between businesses and UNEP-WCMC underpinned by the UNEP principles for private sector engagement. The Partnership is administered through a Memorandum of Understanding (MoU) between WCMC<sup>6</sup> and each company.

	Payable per year under annual MoUs	Payable per year under a five-year MoU
2021	GBP 80,000	GBP 70,000
2022	GBP 82,500	GBP 72,500
2023	GBP 85,000	GBP 75,000
2024	GBP 87,500	GBP 77,500
2025	GBP 90,000	GBP 80,000

Companies will be asked to make a financial contribution to the annual workplan of Proteus. To participate in Proteus for the 2021-2025 phase and access the full range of benefits, each company will be asked to contribute financially as follows:

Partners choosing to engage based on signing annual MoUs will be able to contribute through payment of the full annual contribution<sup>7</sup>. The financial contribution for 2021 has been maintained at the same level as 2020, despite a considerable increase in the benefits which will be delivered to partners. Companies engaging in Proteus under a five-year MoU will be eligible for a £10,000 discount per year, combined with 50% more training time, and 50% more technical assistance hours. Companies may also opt to access downloads of the IUCN Red List of Threatened Species Range data.<sup>8</sup>

## The Proteus Partners' Annual Meeting

The Annual Meetings provide a focused opportunity for partner companies to review the strategic aims of the collaboration and monitor progress within the

work programme and the deployment of funds. UNEP-WCMC commits to reporting on progress within the work programme both through annual meetings and via annual written reports made available to partner companies. In addition to reporting on progress, the Annual Meetings are one of the ways for partners to access some of the direct benefits or Proteus described under each Goal.

## The Proteus Partners' Annual Meeting

By engaging in Proteus, companies buy in to the vision, mission and goals of the partnership. The annual workplan to deliver the goals is determined by UNEP-WCMC, in consultation with partner companies. The workplan is responsive to the needs of partners and the challenges they face.

Existing partners are encouraged to recommend Proteus to potential new partners to support the core objectives and increase investment in the work programme. All partners must pass UNEP-WCMC's private sector due diligence process and adhere to the highest standards of corporate behaviour. Partners are encouraged to demonstrate this in their day to day activities, and through commitment to the principles of the UN Global Compact.



<sup>6</sup> WCMC is the UK Charity which collaborates with UNEP in the operations of UNEP-WCMC

<sup>7</sup> Contributions under one year MoUs may be subject to change and are not guaranteed

<sup>8</sup> The download allows users to access the full spatial dataset that underpins the species information through IBAT. Access is available to Proteus companies for an additional contribution.

# The Proteus Partnership: Achievements

## Our Strengths



**14 partner companies**  
in the extractives industry



**Combined knowledge**  
via a unique sharing network



**17 years of experience**  
working with the extractives sector,  
with four phases of work



**>£11 million invested**  
by Proteus Partners in UNEP-WCMC's  
conservation work and data 2003-2020

## Investment in flagship products

### Protected Planet



**~232,000 records -**  
twice as many records as in 2003



**96% of records**  
now represented by spatial  
boundaries - up from 20% in 2003



**>46 million km<sup>2</sup> of coverage**  
of protected areas globally



**The global standard**  
for protected areas data

## Integrated Biodiversity Assessment Tool



**~17 million km<sup>2</sup>**  
of Key Biodiversity Areas



**Connecting authority sources,**  
Including Protected Planet and the IUCN  
Red List



**>65,000 Red List species**  
with information and spatial  
distributions



**>300,000 biodiversity records**  
in one portal

## OCEAN+



**2.5 million records**  
of marine and coastal habitats



**37 datasets**  
available to Proteus Partners



**More than 2.1 million km<sup>2</sup>**  
of marine and coastal habitat mapped



**>190 resources identified**  
in *Ocean+ Library*

# About UNEP-WCMC

The UN Environment Programme World Conservation Monitoring Centre (UNEP-WCMC) is UNEP's specialist Centre on biodiversity.

The UN Environment Programme World Conservation Monitoring Centre (UNEP-WCMC) is a global Centre of excellence on biodiversity. The Centre operates as a collaboration between UN Environment Programme and the UK registered charity WCMC. Together, we are confronting the global crisis facing nature. We do this through our unique position ensuring science, knowledge and insights shape global and national policy, and by collaborating with partners around the world to build capacity and create innovative solutions to environmental challenges. We use our position as respected custodians of powerful and trusted environmental data to create positive impact for people and nature.

## Our vision

**The UN Environment Programme World Conservation Monitoring Centre strives for a sustainable world for biodiversity and people.**

The Centre works towards this vision by providing strategic leadership, technical expertise, and project support to increase capacity and inspire decision makers to manage biodiversity and ecosystem services for people and the planet. The Centre has close relationships with the UN system and other partners in the public and private sector, which combines with the Centre's extensive understanding of science and policy to produce knowledge on biodiversity and ecosystem services that makes a world of difference.

## Our Strategic Objectives

**Disseminating knowledge on biodiversity and ecosystem services**

**Developing capacity to make use of knowledge on biodiversity and ecosystem services**

**Generating impact for sustainable development from the use of knowledge on biodiversity and ecosystem services**



More information on Proteus  
can be found on the website  
**[www.proteuspartners.org](http://www.proteuspartners.org)**  
or sought from the Business  
and Biodiversity Programme  
at UNEP-WCMC, using the  
following contact details:  
**[proteus@unep-wcmc.org](mailto:proteus@unep-wcmc.org)**  
**(+44)1223 277314**